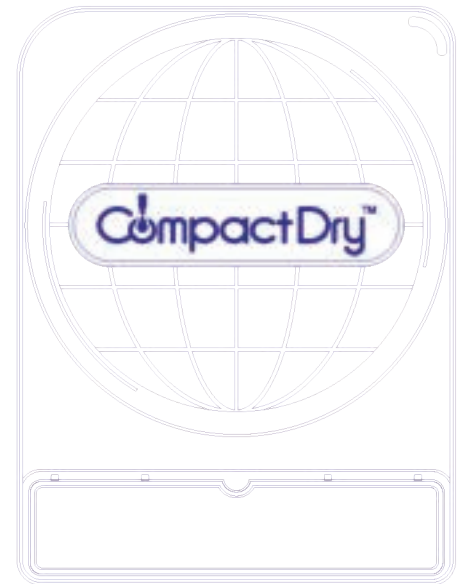


CompactDry™

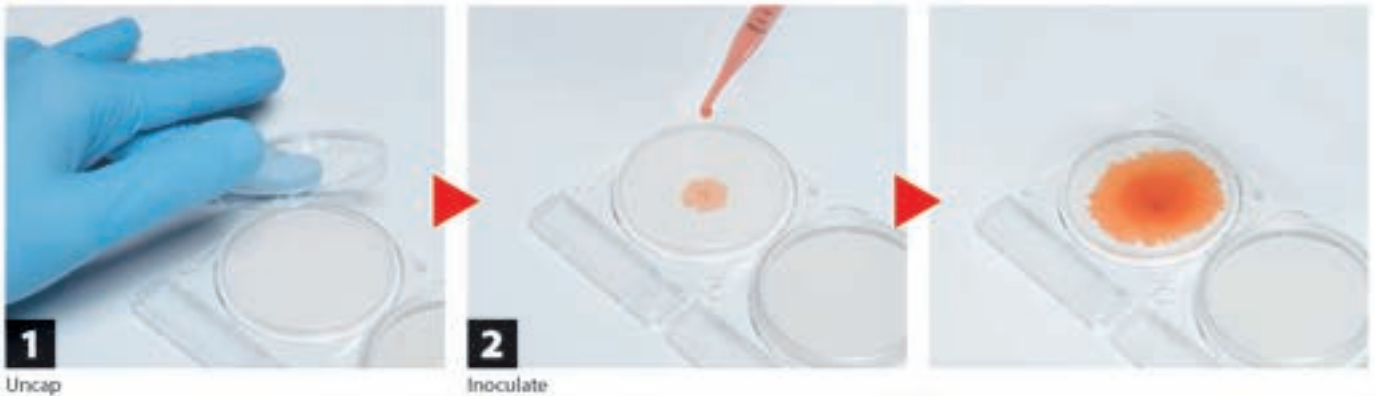
Simple and Easy Dry Media for Microbial Count and Detection



- Total Viable Count ■
- Escherichia coli* and Coliform ■
- Coliform ■
- Yeast and Mold ■
- Staphylococcus aureus* ■
- Vibrio parahaemolyticus* ■
- Bacillus cereus* ■
- Listeria* species ■
- Pseudomonas aeruginosa* ■
- Enterobacteriaceae ■
- Enterococcus species ■
- Salmonella* species ■
- Water Heterotroph bacteria ■

Why CompactDry™?

How to Use



Major Applications



Food



Drinking Water



Environment

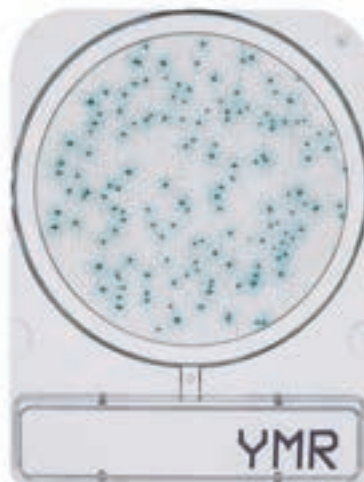
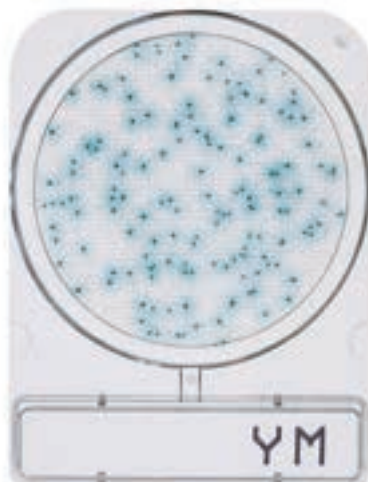


Self Diffusion

Yeast and Mold

CompactDry “Nissui” YM / CompactDry “Nissui” YMR

AOAC / MicroVal / NordVal



Rapid type: Faster results in 48 hours

Incubation Temperature

$25 \pm 2^{\circ}\text{C}$

Incubation Time

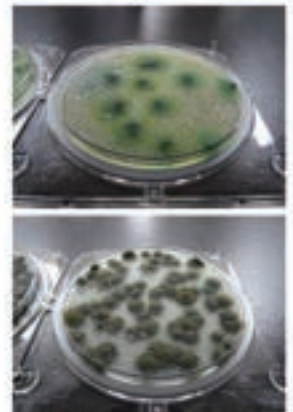
YM: 3-7 days
YMR: 48-72 hours

Interpretation

Yeast : Blue or white to cream colonies
Mold : Cottony colonies with mold colors



3D Growth of Molds



Photos Courtesy of NPO Center for Fungal Consultation Japan



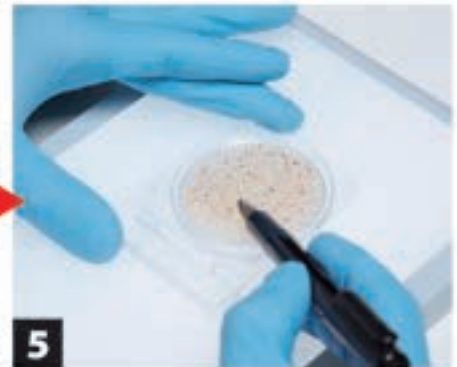
3

Recap



4

Incubate

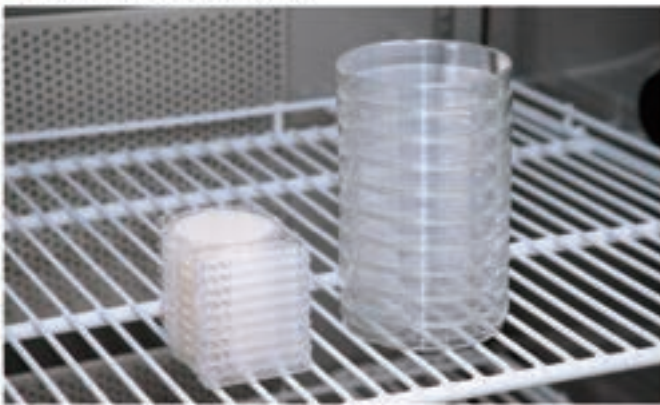


5

Count

Compact

- Unlimited Stackable



Dry



Storage Everywhere



Storage Up to 30°C



Long Shelf Life

Reliable Quality

Made in Japan

Total Viable Count

CompactDry "Nissui" TC

AOAC / MicroVal / NordVal



TC

Incubation Temperature

$35 \pm 2^\circ\text{C}$

Incubation Time

48 ± 3 hours

Interpretation

All colonies



Escherichia coli and Coliform

CompactDry "Nissui" EC

AOAC / MicroVal / NordVal



EC

Incubation Temperature

$35 \pm 2^\circ\text{C}$

Incubation Time

24 ± 2 hours

Interpretation

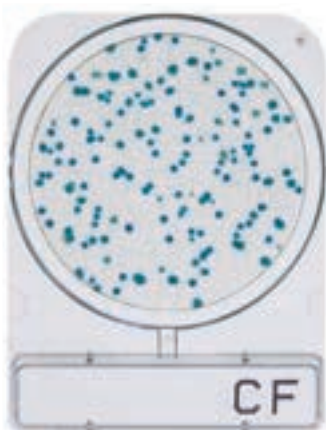
E. coli : Blue / Blue purple colonies
Coliform : Total number of both red and blue colonies





Coliform

AOAC / MicroVal / NordVal

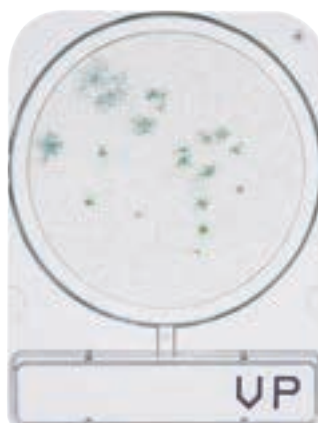
CompactDry "Nissui" CF





Incubation Temperature	35 ± 2°C
Incubation Time	24 ± 2 hours
Interpretation	Blue / Blue green colonies
	 / 

Vibrio parahaemolyticus

CompactDry "Nissui" VP





Incubation Temperature	35 ± 2°C
Incubation Time	18-20 hours
Interpretation	Blue / Blue green colonies
	 / 

Staphylococcus aureus

AOAC / MicroVal / NordVal

CompactDry "Nissui" X-SA

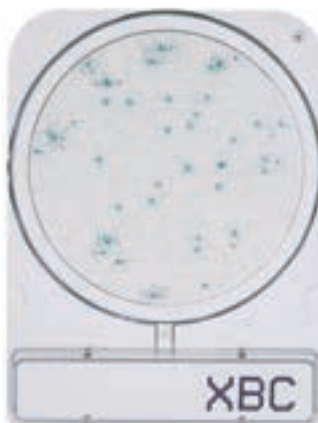




Incubation Temperature	35 ± 2°C
Incubation Time	24 ± 2 hours
Interpretation	Light blue / Blue colonies
	 / 

Bacillus cereus

MicroVal / NordVal

CompactDry "Nissui" X-BC





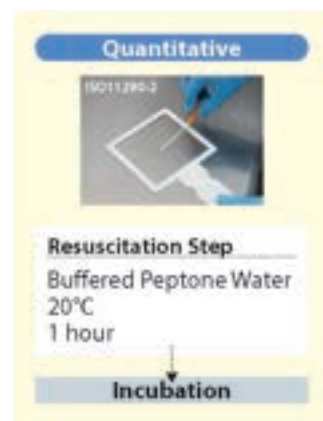
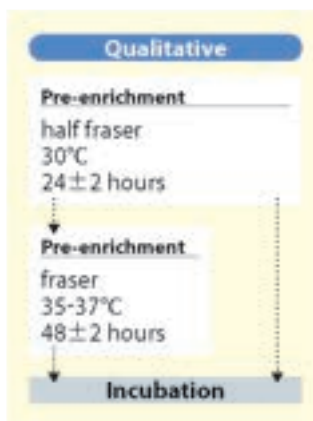
Incubation Temperature	35 ± 2°C
Incubation Time	24 ± 2 hours
Interpretation	Green / Blue colonies
	 / 

Listeria species

CompactDry "Nissui" LS



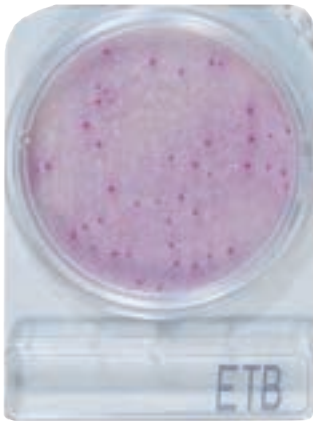
Incubation Temperature	35 / 37 ± 2°C
Incubation Time	24 ± 2-48 ± 3 hours
Interpretation	Light blue / Blue colonies
	 / 



Enterobacteriaceae

MicroVal / NordVal

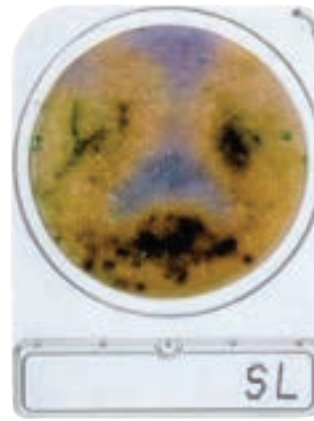
CompactDry "Nissui" ETB



Incubation Temperature	35±2°C
Incubation Time	24±2 hours
Interpretation	Red / Red-Purple
	● / ●

Salmonella species

CompactDry "Nissui" SL

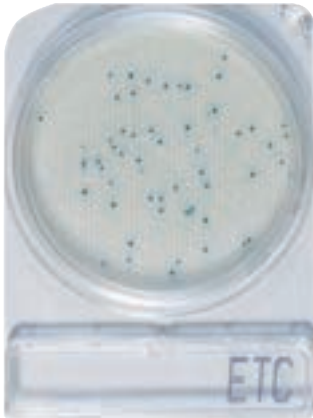


pre-enrichment w/ BPW	35-37°C @20-24 hours
Incubation Time	41-43°C @20-24 hours
Interpretation	Yellow : motility of Salmonella Black : hydrogen sulfide producing Salmonella Green : chromogenic substrate with specific enzyme on Salmonella
	● / ● / ●

Enterococcus species

MicroVal / NordVal

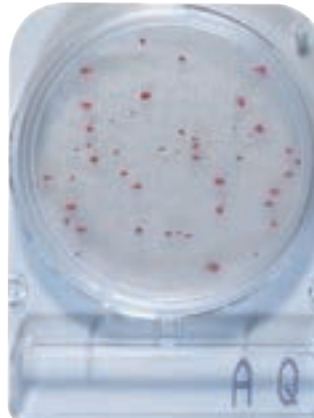
CompactDry "Nissui" ETC



Incubation Temperature	36±1°C
Incubation Time	24±2 hours
Interpretation	Light blue / Blue colonies
	● / ●

Water Heterotroph bacteria

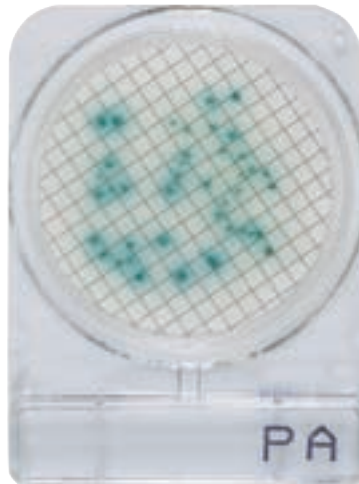
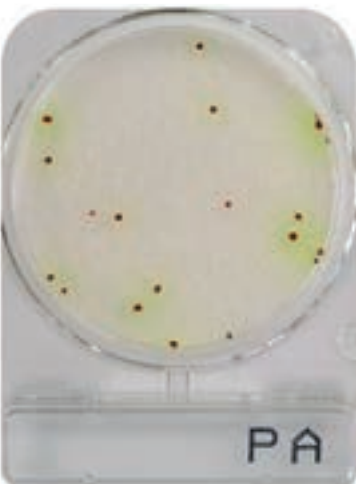
CompactDry "Nissui" AQ



Incubation Temperature	44±4 hours @36±2°C 68±4 hours @22±2°C ISO6222:1999
Water quality-Enumeration of culturable micro-organisms	
Interpretation	Red
	●

Pseudomonas aeruginosa

CompactDry "Nissui" PA



Membrane Filter Method

Incubation Temperature	35-37°C
Incubation Time	24-48 hours
Interpretation	Red colonies surrounded by a greenish-yellow halo
	● + ●

Interpretation	Membrane Filter Method
	Light green / Green blue colonies
	● / ●

CompactDry Product Line

Available for	Name of Product	Storage	Shelf Life
Total Viable Count	CompactDry TC	Up to 30 °C	18 months after manufacturing
<i>Escherichia coli</i> and Coliform	CompactDry EC		
Coliform	CompactDry CF		
Yeast and Mold	CompactDry YM / YMR		
<i>Staphylococcus aureus</i>	CompactDry X-SA		
<i>Vibrio parahaemolyticus</i>	CompactDry VP		
<i>Bacillus cereus</i>	CompactDry X-BC		
<i>Salmonella</i>	CompactDry SL		

Available for	Name of Product	Storage	Shelf Life
Enterobacteriaceae	CompactDry ETB	Up to 30 °C	16 months after manufacturing
<i>Listeria</i> species	CompactDry LS		18 months after manufacturing
<i>Salmonella</i> species	CompactDry SL		
<i>Enterococcus</i> species	CompactDry ETC		19 months after manufacturing
<i>Pseudomonas aeruginosa</i>	CompactDry PA		24 months after manufacturing
Water Heterotroph bacteria	CompactDry AQ		2 years after manufacturing
Sample collection	Easy Wiping Kit		

For more information or to order, please contact us on (02) 9882 3666 or at orders@amsl.com.au

amsl.com.au

PR-100-346 December 2019

