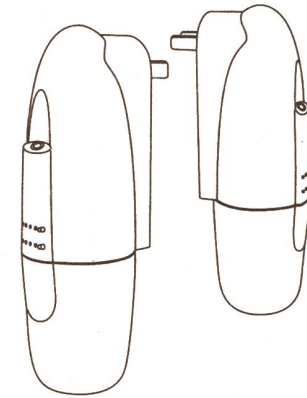


PRODUCT MANUAL

SCENT MARKETING



☐ 103 ☐ 103-APP

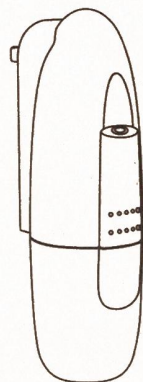
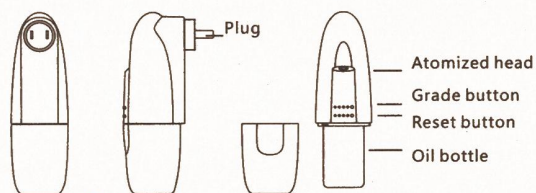
Troubleshooting

Before having the machine repaired, please try to diagnose the problem first with the bellow instructions

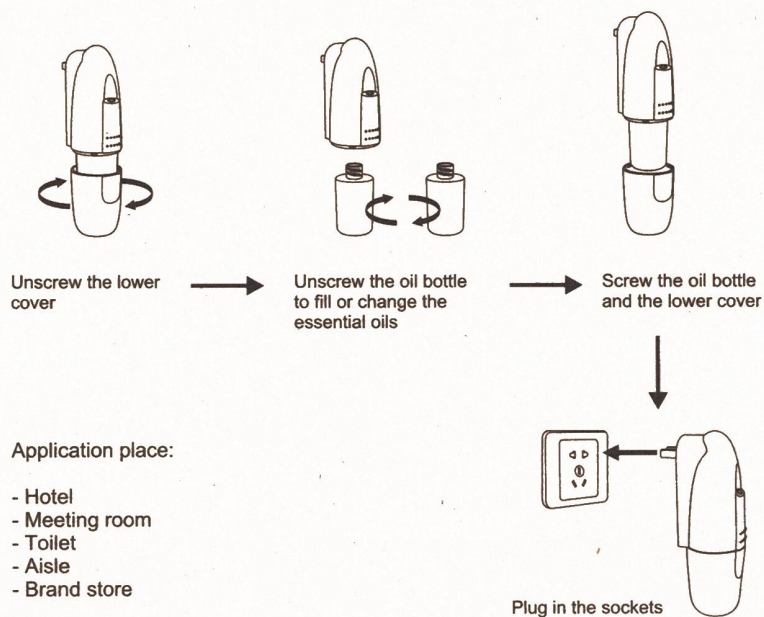
Symptom	Remedy
Does not diffuse	<ul style="list-style-type: none">- Whether the machine is in "not working period" . If yes, it won't spray.- Check whether the air pump is damaged. If yes, replace it with a new one.
Spray little	<ul style="list-style-type: none">- Check whether the gasket is damaged or loose. Please adjust it or replace it with a new one.- Check whether the atomized core is plugged; clear it with alcohol or replace it with a new one
Oil spill	<ul style="list-style-type: none">- Check whether the atomized head is damaged
Oil overflow	<ul style="list-style-type: none">- Check whether the oil bottle is loose, please install it correctly- Check whether the gasket of the atomized head is damaged; if yes, please replace it with another one.- Please keep the machine vertical; Tilt or lie flatly will cause the oil overflow

Specification

【 Product 】	: AE103
【 Size 】	: 122*65*214mm
【 Volume 】	: 100ml
【 Weight 】	: 300g
【 Coverage 】	: 100m ²
【 Power 】	: AC100V-240V 60/60HZ

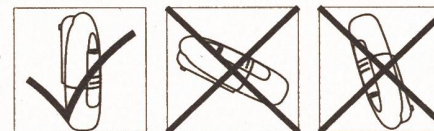


Installation method



Warning

1. Please keep the machine vertical. Tilt or lie flatly may cause the oil overflow. The efficiency of the machine may be affected.
2. Shall not modify, disassemble or repair the machine. If any failure happens to the machine, please contact our technical personnel.



Equipment cleaning

The machine need to be cleaned when below situation happens:

1. You're about to change another kind of essential oils
2. The atomization volume goes weak

Cleaning steps:

1. Unscrew the lower cover and take out the oil bottle
2. Find a larger container and fill the industrial alcohol up. Then soak the bottle for 5-10 minutes.
3. Airing the bottle.

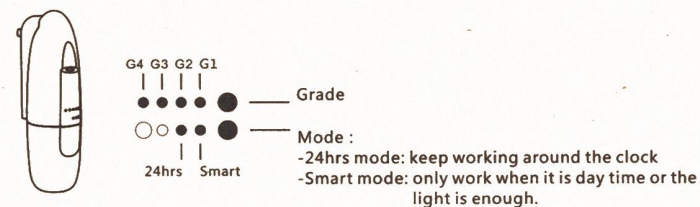
Concentration and consumption

Grade	G1	G2	G3	G4
Pausing time(s)	285s	135s	85s	60s
Consumption(ml/hr)	0.07	0.15	0.23	0.30

Notes: 1.The working time above of each grade is 15s.
2.Different grade and oil may be with different consumption.

Operating instructions

Button control version: easy to handle and light sensor mode



APP version: Controlled by APP, more convenient and intelligent

