



# Q 1250

## GRILL OWNER'S GUIDE

Thank you for purchasing a WEBER grill. Take a few minutes and protect it by registering your product online at [www.weber.com](http://www.weber.com).

### ⚠ DANGER

If you smell gas:

- Shut off gas to the appliance.
- Extinguish any open flames.
- Open lid.
- If odour continues, keep away from the appliance and immediately call your gas supplier or your fire department.

Leaking gas may cause a fire or explosion which can cause serious bodily injury, death, or damage to property.

### ⚠ DANGER

- Never operate this appliance unattended.
- Do not use grill within 610 mm (2 ft) of any combustible material. Combustible materials include, but are not limited to wood or treated wood decks, patios or porches.
- Never operate this appliance within 7.5 m (25 ft) of any flammable liquid.
- If a fire should occur, keep away from the appliance and immediately call your fire department. Do not attempt to extinguish an oil or grease fire with water.

Failure to follow these instructions could result in fire, explosion or burn hazard, which could cause property damage, personal injury or death.

⚠ **WARNING:** Carefully follow all leak-check procedures in this Owner's Guide prior to grill operation. Do this even if the grill was dealer-assembled.

⚠ **WARNING:** Do not ignite this appliance without first reading the BURNER IGNITION sections of this Owner's Guide.

**THIS GAS APPLIANCE IS DESIGNED FOR OUTDOOR USE ONLY.**

This Owner's Guide contains important information necessary for the proper assembly and safe use of the appliance.

Read and follow all warnings and instructions before assembling and using the appliance.



**59252**

# WARNINGS

## ⚠ DANGER

Failure to follow the DANGERS, WARNINGS and CAUTIONS contained in this Owner's Guide may result in serious bodily injury or death, or may result in a fire or an explosion causing damage to property.

### WARNINGS:

- ⚠ Keep this Owner's Guide for future reference.
- ⚠ Follow all warnings and instructions when using the appliance.
- ⚠ Improper assembly of grill may be dangerous. Please follow the assembly instructions carefully.
- ⚠ Do not use this grill unless all parts are in place. The grill must be properly assembled according to the assembly instructions.
- ⚠ Your gas grill should never be used by children. Accessible parts of the grill may be very hot. Keep young children, elderly and pets away while grill is in use.
- ⚠ This gas grill is not intended for commercial use.
- ⚠ This gas grill is not intended for and should never be used as a heater.
- ⚠ Exercise caution when using your gas grill. It will be hot during cooking or cleaning, and should never be left unattended, or moved while in operation.
- ⚠ Do not use charcoal, briquettes or lava rock in your gas grill.
- ⚠ While igniting the grill or cooking, never lean over open grill.
- ⚠ Never place hands or fingers on the front edge of the cookbox when the grill is hot or the lid is open.
- ⚠ Do not attempt to disconnect the gas regulator or any gas fitting while your grill is in operation.
- ⚠ Use heat-resistant barbecue mitts or oven gloves when operating grill.
- ⚠ Use the regulator that is supplied with your gas grill.
- ⚠ Follow regulator connection instructions for your type of gas grill.
- ⚠ Should the burner go out while grill is in operation, turn the gas valve off. Open the lid and wait five minutes before attempting to relight grill, using the igniting instructions.
- ⚠ Do not place grill on glass or a combustible surface.
- ⚠ Do not build this model of grill in any built-in or slide-in construction. Ignoring this WARNING could cause a fire or an explosion that can damage property and cause serious bodily injury or death.
- ⚠ Do not store an extra (spare) or disconnected gas supply cartridge/cylinder under or near this grill.
- ⚠ After a period of storage and/or non-use, the gas grill should be checked for gas leaks and burner obstructions before use. See instructions in this Owner's Guide for correct procedures.
- ⚠ Do not operate the gas grill if there is a gas leak present.
- ⚠ Do not use a flame to check for gas leaks.
- ⚠ Do not put a grill cover or anything flammable on the grill while grill is in operation or is hot.
- ⚠ Butane/propane gas is not natural gas. The conversion or attempted use of natural gas in a butane/propane gas unit is dangerous and will void your warranty.
- ⚠ Keep electrical mains lead and the fuel supply hose away from heated surfaces.
- ⚠ Do not enlarge valve orifice or burner ports when cleaning the valve or burner.
- ⚠ The gas grill should be thoroughly cleaned on a regular basis.
- ⚠ A dented or rusty gas supply cartridge/cylinder may be hazardous and should be checked by your gas supplier. Do not use a gas supply cartridge/cylinder with a damaged valve.
- ⚠ Although your gas supply cartridge/cylinder may appear to be empty, gas may still be present, and the cartridge/cylinder should be transported and stored accordingly.
- ⚠ Make sure you are outdoors and away from any source of ignition when changing or connecting cartridge or cylinder.
- ⚠ Should a grease fire occur, turn off the burner and leave lid closed until fire is out.
- ⚠ Should an uncontrolled flare-up occur, move food away from the flames until flaring subsides.
- ⚠ The use of alcohol, prescription drugs, non-prescription drugs, or illegal drugs may impair the consumer's ability to properly and safely assemble, move, store or operate the appliance.

### ADDITIONAL WARNINGS FOR Q 1250:

- ⚠ Use butane/propane disposable cartridges with a capacity of 470g. The cartridge must have an EN417 valve as illustrated in this Owner's Guide.
- ⚠ Do not use any part (adaptor, etc.) of which method of coupling to the canister is different.

# WARRANTY

Thank you for purchasing a WEBER product. Weber-Stephen Products LLC, 1415 S. Roselle Road, Palatine, Illinois 60067 ("WEBER") prides itself on delivering a safe, durable, and reliable product.

This is WEBER's Voluntary Warranty provided to you at no extra charge. It contains the information you will need to have your WEBER product repaired in the unlikely event of a failure or defect.

**Pursuant to applicable PRC laws, the customer has several rights in case the product is defective. Those rights may include repair, replacement, or refund of the defective product, as appropriate depending on the actual circumstance. Those rights include supplementary performance or replacement, abatement of the purchasing price, and compensation. In the European Union, for example, this would be a two-year statutory warranty starting on the date of the handover of the product. These and other statutory rights remain unaffected by this warranty provision. In fact, this warranty grants additional rights to the Owner that are independent from statutory warranty provisions.**

## WEBER'S VOLUNTARY WARRANTY

WEBER warrants, to the purchaser of the WEBER product (or in the case of a gift or promotional situation, the person for whom it was purchased as a gift or promotional item), that the WEBER product is free from defects in material and workmanship for the period(s) of time specified below when assembled and operated in accordance with the accompanying Owner's Manual. (Note: If you lose or misplace your WEBER Owner's Manual, a replacement is available online at [www.weber.com](http://www.weber.com), or such country-specific website to which Owner may be redirected.) Under normal, private single family home or apartment use and maintenance, WEBER agrees within the framework of this warranty to repair or replace defective parts within the applicable time periods, limitations, and exclusions listed below. TO THE EXTENT ALLOWABLE BY APPLICABLE LAW, THIS WARRANTY IS EXTENDED ONLY TO THE ORIGINAL PURCHASER WHO HAS PURCHASED WEBER PRODUCT FROM WEBER'S AUTHORIZED DEALERS AND RETAILERS AND IS NOT TRANSFERABLE TO SUBSEQUENT OWNERS, EXCEPT IN THE CASE OF GIFTS AND PROMOTIONAL ITEMS AS NOTED ABOVE.

## OWNER'S RESPONSIBILITIES UNDER THIS WARRANTY

To ensure trouble-free warranty coverage, it is important (but it is not required) that you register your WEBER product online at [www.weber.com](http://www.weber.com), or such country-specific website to which Owner may be redirected. Please also retain your original sales receipt and/or invoice. Registering your WEBER product confirms your warranty coverage and provides a direct link between you and WEBER in case we need to contact you.

The above warranty only applies if the Owner takes reasonable care of the WEBER product by following all assembly instructions, usage instructions, and preventative maintenance as outlined in the accompanying Owner's Manual, unless the Owner can prove that the defect or failure is independent of non-compliance with the above mentioned obligations. If you live in a coastal area, or have your product located near a pool, maintenance includes regular washing and rinsing of the exterior surfaces as outlined in the accompanying Owner's Manual.

## WARRANTY HANDLING / EXCLUSION OF WARRANTY

If you believe that you have a part which is covered by this Warranty, please contact WEBER Customer Service using the contact information on our website ([www.weber.com](http://www.weber.com), or such country-specific website to which Owner may be redirected). WEBER will, upon investigation, repair or replace (at its option) a defective part that is covered by this Warranty. In the event that repair or replacement are not possible, WEBER may choose (at its option) to replace the grill in question with a new grill of equal or greater value. WEBER may ask you to return parts for inspection, shipping charges to be pre-paid.

This WARRANTY lapses if there are damages, deteriorations, discolorations, and/or rust for which WEBER is not responsible caused by:

- Abuse, misuse, alteration, modification, misapplication, vandalism, neglect, improper assembly or installation, and failure to properly perform normal and routine maintenance;
- Insects (such as spiders) and rodents (such as squirrels), including but not limited to damage to burner tubes and/or gas hoses;
- Exposure to salt air and/or chlorine sources such as swimming pools and hot tubs/spas;
- Severe weather conditions such as hail, hurricanes, earthquakes, tsunamis or surges, tornadoes or severe storms.

The use and/or installation of parts on your WEBER product that are not genuine WEBER parts will void this Warranty, and any damages that result hereby are not covered by this Warranty. Any conversion of a gas grill not authorized by WEBER and performed by a WEBER authorized service technician will void this Warranty.

The grills illustrated in this Owner's Guide may vary slightly from the model purchased.

## PRODUCT WARRANTY PERIODS

### Cookbox:

5 years, no rust through/burn through  
(2 years paint excluding fading or discoloration)

### Lid assembly:

5 years, no rust through/burn through  
(2 years paint excluding fading or discoloration)

### Stainless steel burner tubes:

5 years, no rust through/burn through

### Porcelain-enamelled cast iron cooking grates:

5 years, no rust through/burn through

### Plastic components:

5 years, excluding fading or discoloration

### All remaining parts:

2 years

Warranty period commences from the date of sales receipt or invoice. You will be required to present the original sales receipt or invoice in claiming the warranty.

## DISCLAIMERS

**APART FROM THE WARRANTY AND DISCLAIMERS AS DESCRIBED IN THIS WARRANTY STATEMENT, THERE ARE EXPLICITLY NO FURTHER WARRANTY OR VOLUNTARY DECLARATIONS OF LIABILITY GIVEN HERE WHICH GO BEYOND THE STATUTORY LIABILITY APPLYING TO WEBER. THE PRESENT WARRANTY STATEMENT ALSO DOES NOT LIMIT OR EXCLUDE SITUATIONS OR CLAIMS WHERE WEBER HAS MANDATORY LIABILITY AS PRESCRIBED BY STATUTE.**

**NO WARRANTIES SHALL APPLY AFTER THE APPLICABLE PERIODS OF THIS WARRANTY. NO OTHER WARRANTIES GIVEN BY ANY PERSON, INCLUDING A DEALER OR RETAILER, WITH RESPECT TO ANY PRODUCT (SUCH AS ANY "EXTENDED WARRANTIES"), SHALL BIND WEBER. THE EXCLUSIVE REMEDY OF THIS WARRANTY IS REPAIR OR REPLACEMENT OF THE PART OR PRODUCT, UNLESS OTHERWISE MANDATORILY REQUIRED BY APPLICABLE LAW.**

**IN NO EVENT UNDER THIS VOLUNTARY WARRANTY SHALL RECOVERY OF ANY KIND BE GREATER THAN THE AMOUNT OF THE PURCHASE PRICE OF THE WEBER PRODUCT SOLD.**

**YOU ASSUME THE RISK AND LIABILITY FOR LOSS, DAMAGE, OR INJURY TO YOU AND YOUR PROPERTY AND/OR TO OTHERS AND THEIR PROPERTY ARISING OUT OF THE MISUSE OR ABUSE OF THE PRODUCT OR FAILURE TO FOLLOW INSTRUCTIONS PROVIDED BY WEBER IN THE ACCOMPANYING OWNER'S MANUAL.**

**PARTS AND ACCESSORIES REPLACED UNDER THIS WARRANTY ARE WARRANTED ONLY FOR THE BALANCE OF THE ABOVE MENTIONED ORIGINAL WARRANTY PERIOD(S).**

**THIS WARRANTY APPLIES TO PRIVATE SINGLE FAMILY HOME OR APARTMENT USE ONLY AND DOES NOT APPLY TO WEBER GRILLS USED IN COMMERCIAL, COMMUNAL OR MULTI-UNIT SETTINGS SUCH AS RESTAURANTS, HOTELS, RESORTS, OR RENTAL PROPERTIES.**

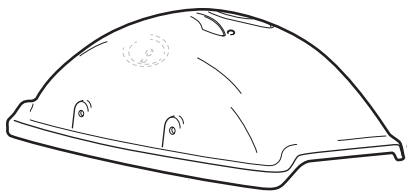



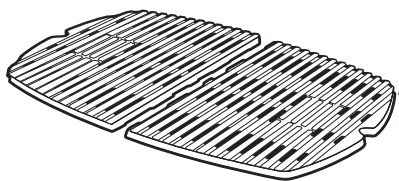
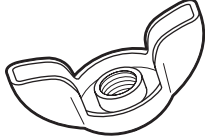
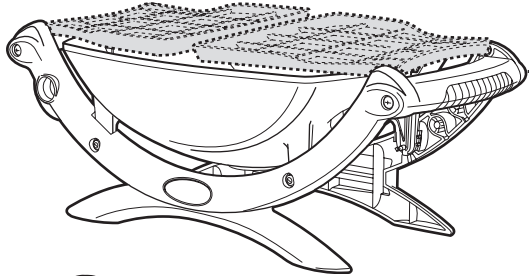

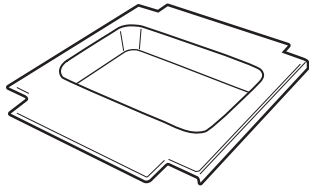
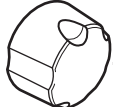
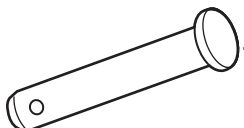

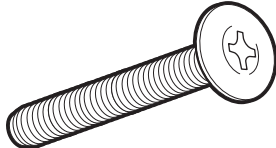
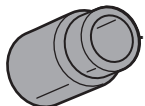
**WEBER MAY FROM TIME TO TIME CHANGE THE DESIGN OF ITS PRODUCTS. NOTHING CONTAINED IN THIS WARRANTY SHALL BE CONSTRUED AS OBLIGATING WEBER TO INCORPORATE SUCH DESIGN CHANGES INTO PREVIOUSLY MANUFACTURED PRODUCTS, NOR SHALL SUCH CHANGES BE CONSTRUED AS AN ADMISSION THAT PREVIOUS DESIGNS WERE DEFECTIVE.**

Refer to International Business Units list at the end of this Owner's Manual for additional contact information.

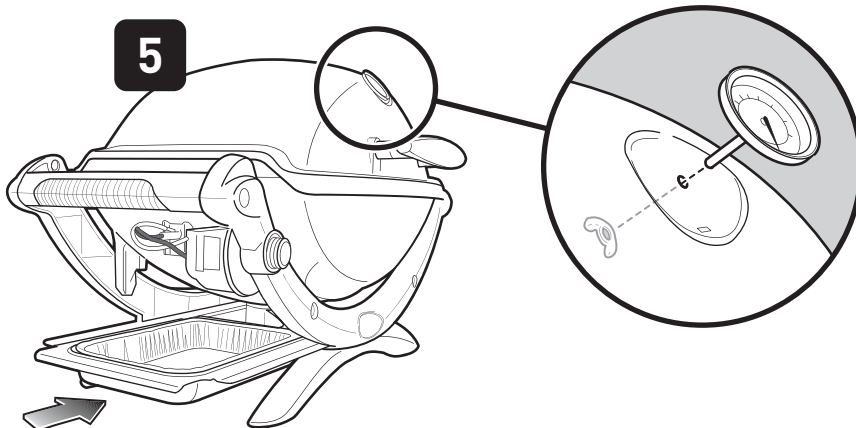
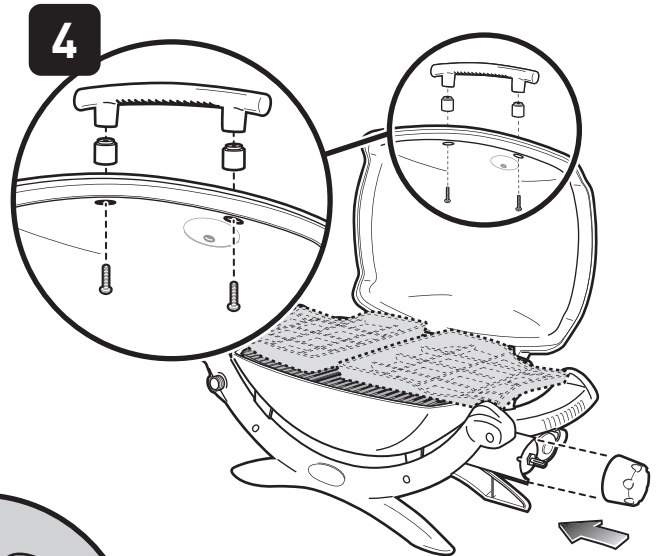
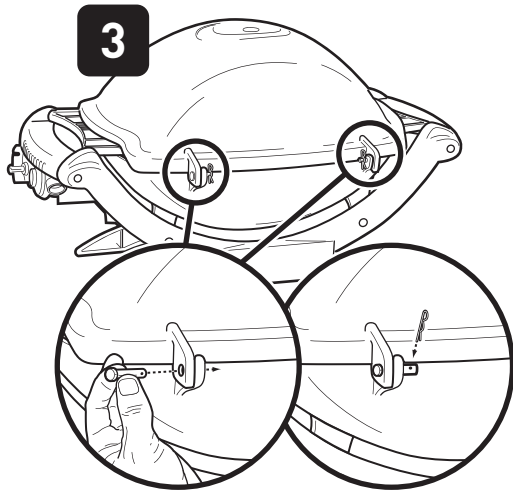
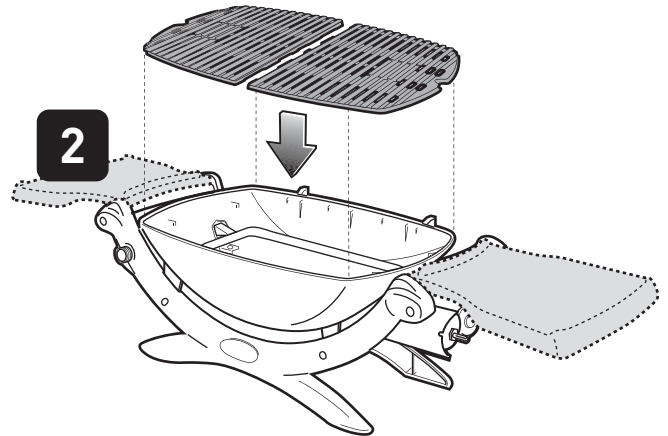
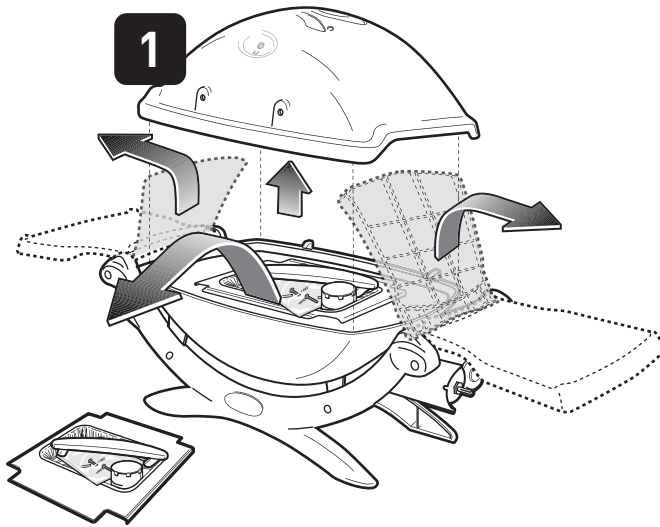
# TABLE OF CONTENTS

WARNINGS .....	2
WARRANTY .....	3
TABLE OF CONTENTS .....	3
PARTS LIST .....	4
ASSEMBLY .....	5
WEBER Q 1250 EXPLODED VIEW .....	6
IMPORTANT INFORMATION ABOUT LP GAS & LP GAS CONNECTIONS .....	8
WHAT IS LP GAS? .....	8
SAFE HANDLING TIPS FOR GAS CARTRIDGES .....	8
STORAGE AND NON-USE GUIDELINES .....	8
REGULATOR CONNECTIONS & REQUIREMENTS .....	8
CONNECTING THE GAS CARTRIDGE TO THE REGULATOR .....	8
PREPARING TO USE YOUR GRILL .....	9
WHAT IS A LEAK CHECK? .....	9
CHECKING FOR GAS LEAKS .....	9
DISCONNECTING THE REGULATOR FROM THE CARTRIDGE .....	9
SAFETY CHECKS BEFORE USING YOUR GRILL .....	10
SAFETY FIRST .....	10
REMOVABLE CATCH PAN AND DISPOSABLE DRIP PAN .....	10
BURNER IGNITION & USAGE .....	11
METHODS OF BURNER IGNITION .....	11
BURNER IGNITION .....	11
TO EXTINGUISH BURNER .....	11
LIGHTING WITH A MATCH .....	12
TO EXTINGUISH BURNER .....	12
BARBECUING TIPS & HELPFUL HINTS .....	13
TIPS & HINTS .....	13
PREHEATING .....	13
COVERED COOKING .....	13
GREASE COLLECTION SYSTEM .....	13
TROUBLESHOOTING .....	14
ANNUAL MAINTENANCE .....	15
KEEPING YOUR WEBER GAS GRILL IN TIP-TOP SHAPE .....	15
BURNER FLAME PATTERN .....	15
WEBER SPIDER/INSECT SCREEN(S) .....	15
BURNER TUBE PORTS .....	15
BURNER TUBE CLEANING OR REPLACEMENT .....	16
ROUTINE MAINTENANCE .....	17
BEAUTIFUL—INSIDE AND OUT .....	17
CLEANING THE OUTSIDE OF THE GRILL .....	17
CLEANING THE INSIDE OF THE GRILL .....	17
IGNITION SYSTEM OPERATIONS .....	18
MAINTAINING THE ELECTRONIC IGNITION SYSTEM .....	18

# PARTS LIST

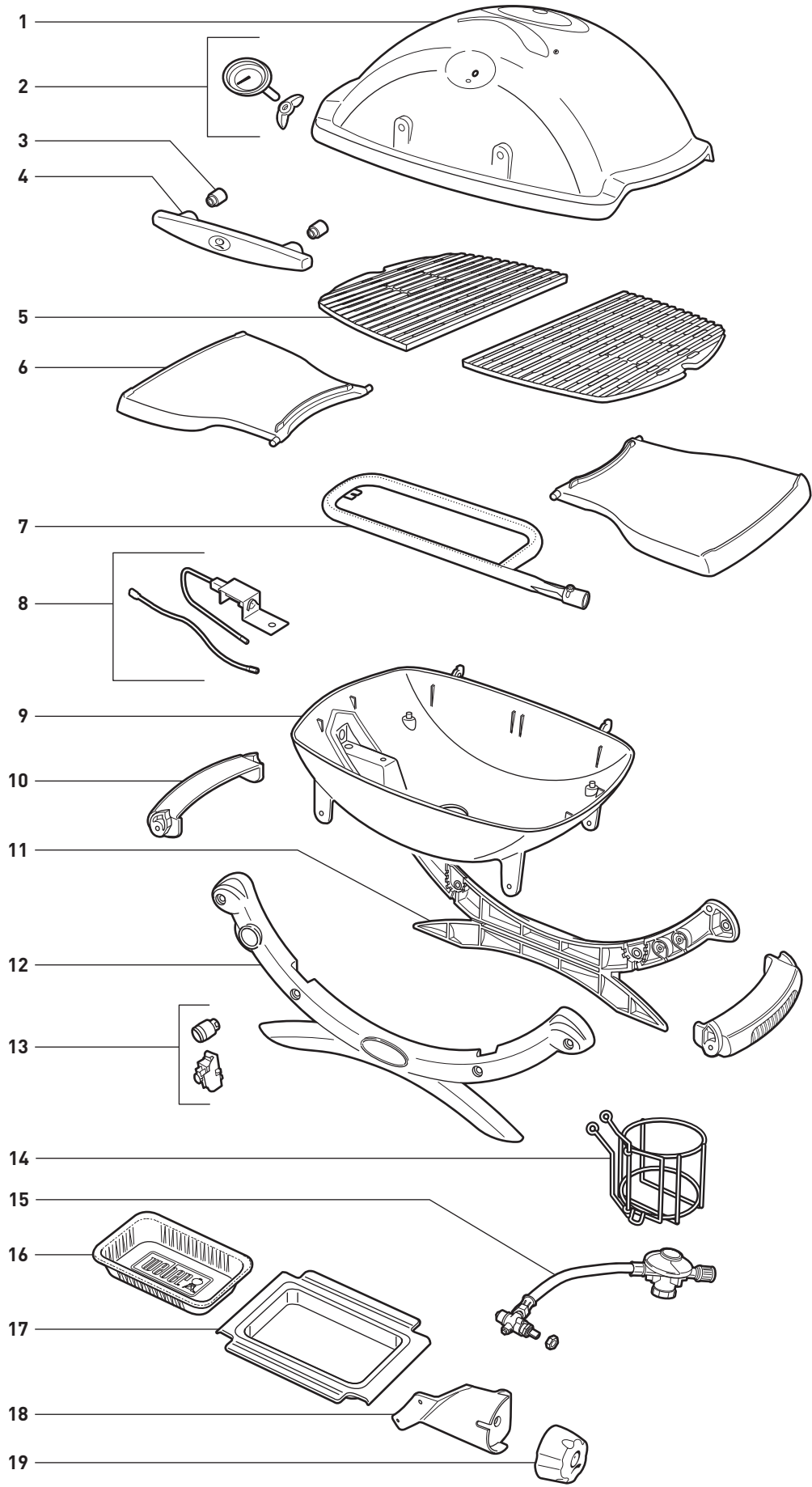
	1		1
	1		1
	1		1
	1		
	1		
	1		
	1		
	2		
	2		
	2		
	2		

# ASSEMBLY



# WEBER Q 1250 EXPLODED VIEW

Q 1250\_ASIA\_LPG\_040218



# WEBER Q 1250 EXPLODED VIEW

1. Lid
2. Thermometer
3. Handle Spacer
4. Handle
5. Cooking Grate
6. Side Table
7. Burner Tube
8. Igniter Electrode Assembly
9. Cookbox
10. Carrying Handle
11. Rear Cradle
12. Front Cradle
13. Electronic Igniter Button & Module
14. Gas Cartridge Support Basket
15. Gas Cartridge Valve, Hose and Regulator Assembly
16. Disposable Drip Pan
17. Removable Catch Pan
18. Control Bracket
19. Burner Control Knob

# IMPORTANT INFORMATION ABOUT LP GAS & LP GAS CONNECTIONS

## WHAT IS LP GAS?

Liquefied petroleum gas, also called LPG, LP gas, liquid propane, or simply propane or butane, is the flammable, petroleum-based product used to fuel your grill. It is a gas at moderate temperatures and pressure when it is not contained. But at moderate pressure inside a container, such as a cartridge, LPG is a liquid. As pressure is released from the cartridge, the liquid readily vaporizes and becomes LP gas.

- LPG has an odor similar to natural gas. You should be aware of this odor.
- LPG is heavier than air. Leaking LP gas may collect in low areas and resist dispersion.

### **⚠ DANGER**

**Do not store an extra (spare) or disconnected gas supply cartridge under or near this grill.**

## SAFE HANDLING TIPS FOR GAS CARTRIDGES

There are various guidelines and safety factors that you need to keep in mind when using liquefied petroleum gas (LPG). Carefully follow these instructions before using your Weber grill.

### Tips for Cartridges

- Do not use a damaged cartridge. A dented or rusty cartridge may be hazardous and should be replaced with a new cartridge immediately.
- Handle "empty" cartridges with the same care as you handle full cartridges. Even when a cartridge is empty of liquid, there may still be gas pressure inside the cartridge.
- Cartridges should not be dropped or handled roughly.
- Never store or transport the cartridge where temperatures can reach 51° C (the cartridge will become too hot to hold by hand). For example: do not leave the cartridge in a car on a hot day.
- Leak-test the joint where the regulator connects to the cartridge each time a reconnection occurs. For example: test each time the cartridge is reinstalled.
- Cartridges must be kept out of reach of children.
- Do not connect to natural gas supply (city gas). The valves and orifices are designed exclusively for liquefied petroleum gas.
- The areas around the cartridge must be free and clear from debris.
- The cartridge should not be changed in the proximity of an ignition source.

## STORAGE AND NON-USE GUIDELINES

For grills that have been stored for a while, it is important to follow these guidelines:

- Do not store a disconnected cartridge in a building, garage, or any other enclosed area.
- Check that the areas under the cookbox are free from debris that might obstruct the flow of combustion or ventilation air.
- The Weber gas grill should be checked for gas leaks and any obstructions in the burner tubes before it is used. (Refer to "PREPARING TO USE YOUR GRILL.")
- The spider/insect screens should also be checked for any obstructions. (Refer to "ANNUAL MAINTENANCE.")
- Disconnect the cartridge if: 1) it is empty; 2) the grill is being stored in a garage or other enclosed area; 3) the grill is being transported.

## REGULATOR CONNECTIONS & REQUIREMENTS

### Requirements for Cartridges

- Any parts sealed by the manufacturer must not be altered by the user.
- Any modification of the appliance may be dangerous.

## CONNECTING THE GAS CARTRIDGE TO THE REGULATOR

Most Weber gas grills are equipped with a pressure regulator, which is a device to control and maintain uniform gas pressure as gas is released from the cartridge.

Use butane/propane disposable cartridges with a capacity of 470g. The cartridge must have an EN417 valve as illustrated (1). Use only Weber branded disposable cartridge model number 17700.

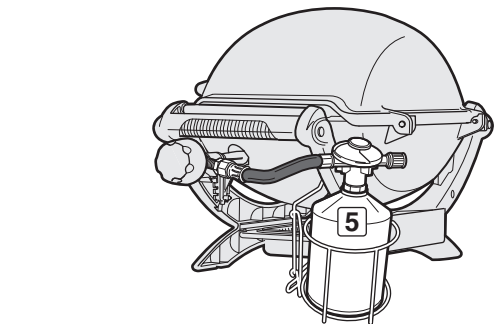
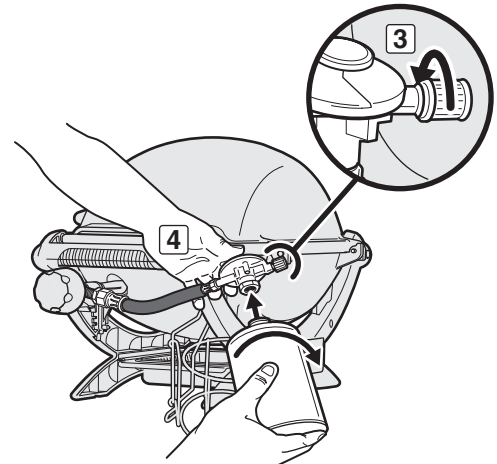
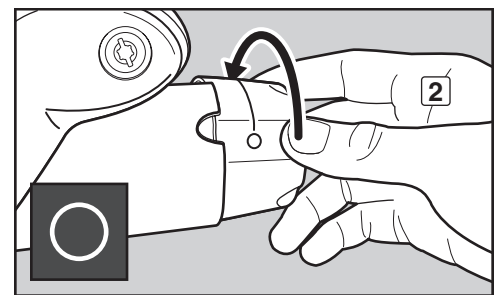
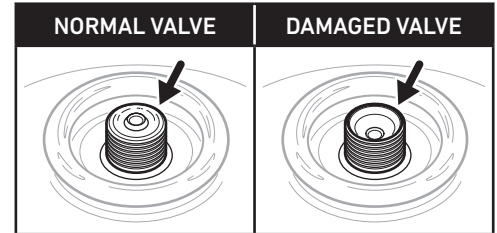
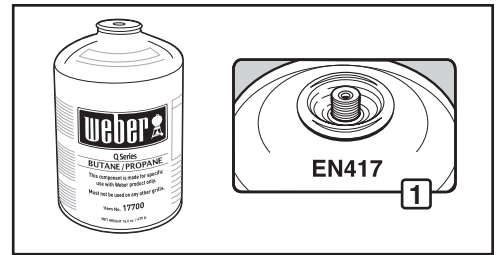
### **⚠ CAUTION: Only use cartridges that are marked "BUTANE-PROPANE MIX."**

- A) Make sure the burner control knob is turned off by pushing it in and turning it clockwise to the off (O) position (2).
- B) Make sure the regulator gas control valve is turned off by turning clockwise until tight (3).
- C) Push the disposable cartridge into regulator and turn clockwise until tight (4).

### **⚠ WARNING: Hand tighten only. Using excessive force could damage the regulator coupling and cartridge valve. This could cause a leak or prevent gas flow.**

- D) Set the disposable cartridge into the gas cartridge support basket (5).

### **⚠ WARNING: The disposable cartridge must fit within the support basket.**





# PREPARING TO USE YOUR GRILL

## WHAT IS A LEAK CHECK?

The fuel system in your grill features connections and fittings. A leak check is a reliable way to make sure that no gas is escaping from any of the connections or fittings.

Although all factory-made connections have been thoroughly checked for gas leaks, it's important to perform a leak check before using your grill for the first time, as well as anytime you disconnect and reconnect a fitting and each time you perform routine maintenance.

### ⚠ DANGER

Do not use an open flame to check for gas leaks. Be sure there are no sparks or open flames in the area while you check for leaks. Sparks or open flames will result in a fire or explosion, which can cause serious bodily injury or death and damage to property.

- ⚠ **WARNING:** The gas connections of your gas grill have been factory tested. We do, however, recommend that you leak check all gas connections before operating your gas grill.
- ⚠ **WARNING:** Perform these leak checks even if your grill was dealer or store assembled.
- ⚠ **WARNING:** You should check for gas leaks every time you disconnect and reconnect a gas fitting.

*NOTE: All factory-made connections have been thoroughly checked for gas leaks and the burner has been flame-tested. As a safety precaution, however, you should check all fittings for leaks before using your Weber gas grill. Shipping and handling may loosen or damage a gas fitting.*

## CHECKING FOR GAS LEAKS

You will need: A spray bottle or brush or rag and a soap and water solution. (You can make your own soap and water solution by mixing 20% liquid soap with 80% water; or, you can purchase leak check solution in the plumbing section of any hardware store.)

- A) Make sure regulator control knob is turned off by pushing it in and turning it counterclockwise to the off position.
- B) Make sure burner control knob is turned off by pushing it in and turning it clockwise to the off (O) position (1).
- C) Turn gas supply on by turning the regulator gas control valve anti-clockwise (2).

⚠ **WARNING:** Do not ignite burner when leak checking.

- D) To check for leaks, wet fittings with the soap and water solution, using a spray bottle, brush or rag. If bubbles form, or if a bubble grows, there is a leak. Apply the soap and water solution to the following connections:

- a) Regulator-to-cartridge connection (3).

⚠ **WARNING:** If there is a leak at connection (3), remove cartridge. DO NOT OPERATE THE GRILL. Install a different cartridge and recheck for leaks with soap and water solution. If a leak persists after installing a different cartridge, turn off the gas. DO NOT OPERATE THE GRILL. Contact the Customer Service Representative in your area using the contact information on our web site. Log onto [www.weber.com](http://www.weber.com).

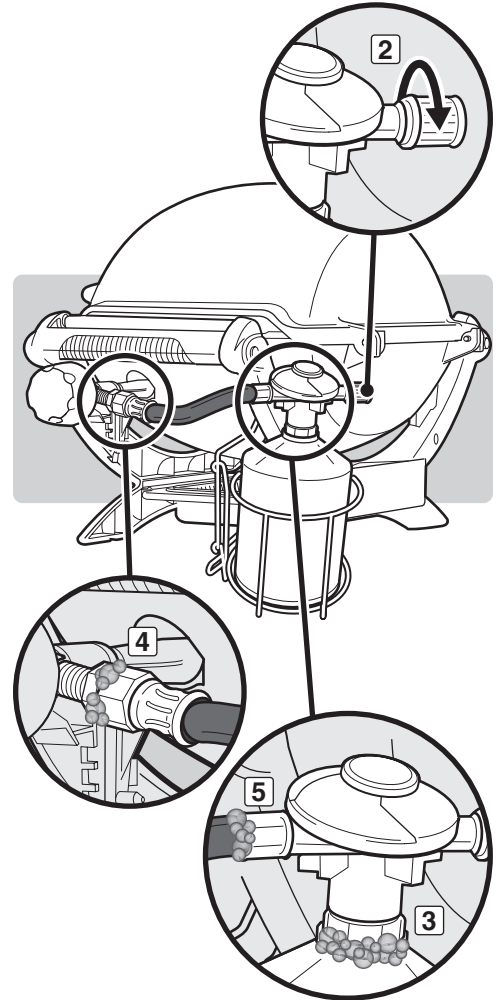
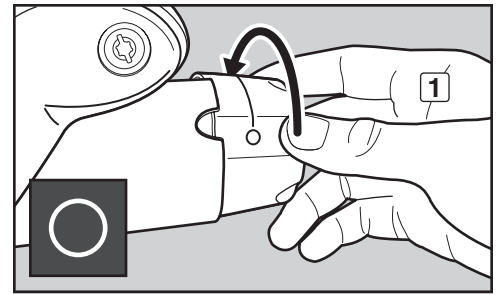
- b) Valve-to-regulator hose connection (4).
- c) Regulator hose-to-regulator connection (5).

⚠ **WARNING:** If there is a leak at connection (4 or 5), remove cartridge. DO NOT OPERATE THE GRILL. Contact the Customer Service Representative in your area using the contact information on our web site. Log onto [www.weber.com](http://www.weber.com).

- E) When leak checking is complete, rinse connections with water.

*NOTE: Since some leak test solutions, including soap and water, may be slightly corrosive, all connections should be rinsed with water after checking for leaks.*

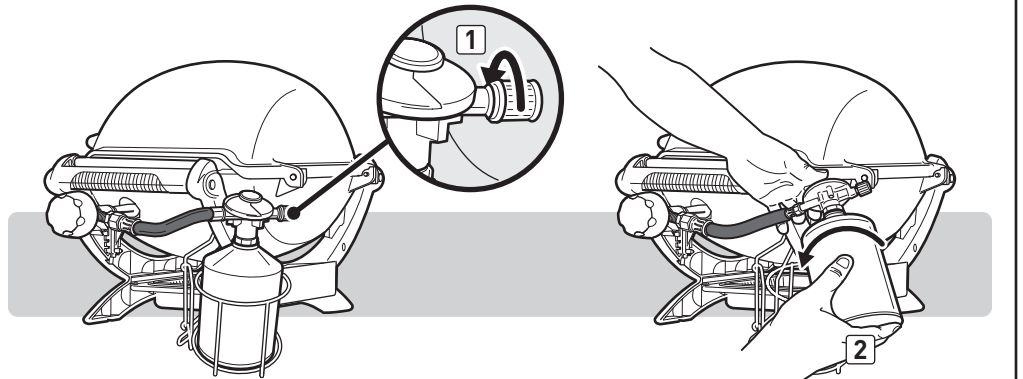
Now you are ready to use your grill.



## DISCONNECTING THE REGULATOR FROM THE CARTRIDGE

When your cartridge needs to be replaced, follow these instructions to remove it.

- A) Make sure the burner control knob is turned off by pushing it in and turning it clockwise to the off (O) position.
- B) Make sure the regulator gas control valve is turned off by turning it clockwise until tight (1).
- C) Unscrew disposable cartridge from regulator by turning it anti-clockwise (2).



# SAFETY CHECKS BEFORE USING YOUR GRILL

## SAFETY FIRST

It's a good idea to get in the habit of performing a few safety checks before grilling.

**Safety must be considered when you are deciding where to place and operate your grill. Be sure to read the following warnings before installing or using your grill.**

### WARNINGS:

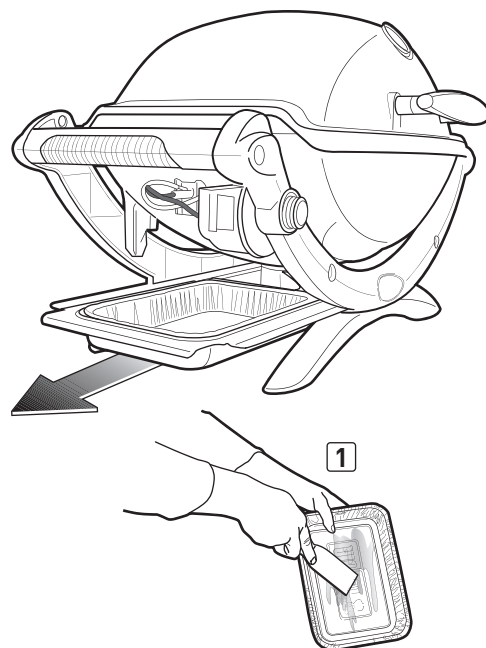
- ⚠ Only use this grill outdoors in a well-ventilated area. Do not use in a garage, building, breezeway, shed, hut or any other enclosed area.
- ⚠ Your gas grill must never be used under an unprotected combustible roof or overhang.
- ⚠ Your gas grill is not intended to be installed in or on caravans and/or boats.
- ⚠ Do not use the gas grill in the boot of any vehicle, or inside an estate car, people carrier, minibus or caravan.
- ⚠ Keep the cooking area clear of flammable vapours and liquids such as petrol, alcohol, etc., and combustible materials.
- ⚠ The entire cookbox gets hot when in use. Do not touch.
- ⚠ Do not move the gas grill when operating or while grill is alight.
- ⚠ When cooking, the appliance must be on a level, stable surface in an area clear of combustible material.
- ⚠ Use heat-resistant barbecue mitts or gloves when operating barbecue.

## REMOVABLE CATCH PAN AND DISPOSABLE DRIP PAN

Your grill was built with a grease collection system, which funnels grease away from food and into a removable catch pan. For your convenience, you can also line the removable catch pan with a WEBER disposable drip pan, which will help keep the removable catch pan cleaner longer.

Cleaning the removable catch pan is just as important as cleaning the cookbox. Check the removable catch pan for grease build-up each time you use your grill. Remove excess grease with a plastic scraper (1). Wash the removable catch pan with warm, soapy water and rinse with water.

- ⚠ **WARNING:** Check the removable catch pan or disposable drip pan for grease build-up before each use. Remove excess grease to avoid a grease fire. A grease fire can cause serious bodily injury or damage to property.
- ⚠ **CAUTION:** Do not line the cookbox, removable catch pan or disposable drip pan with aluminum foil.



## METHODS OF BURNER IGNITION

There are two ways to ignite the burner. The first is by using the ignition system built into your grill. The second is with a match.

Next are the steps for igniting your grill using the ignition system. On the following page are steps for igniting your grill with a match.

### BURNER IGNITION

A) Open the grill lid (1).

#### ⚠ DANGER

**Failure to open the lid before igniting the grill's burner, or not waiting five minutes to allow the gas to clear if the grill does not light, may result in an explosive flare-up which can cause serious bodily injury or death.**

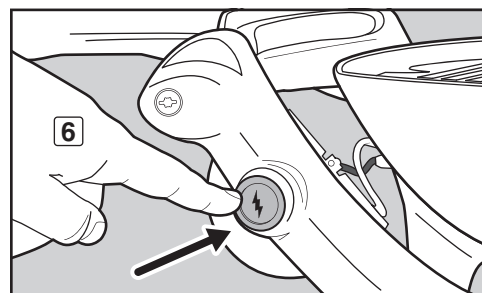
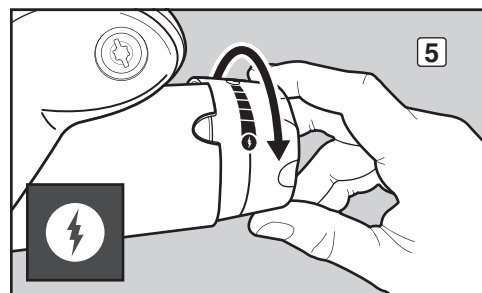
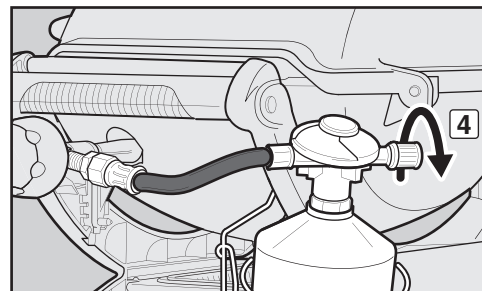
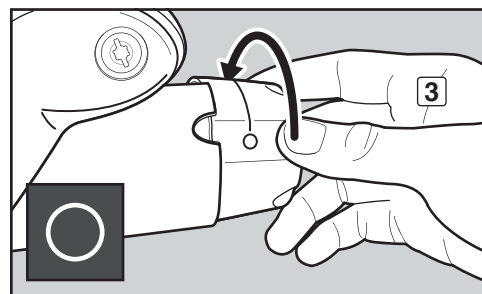
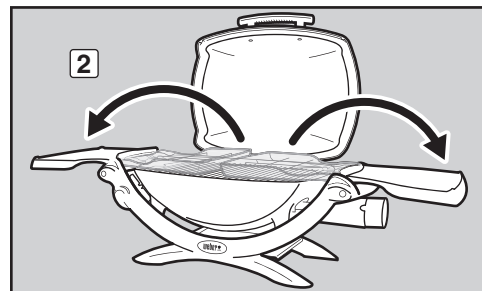
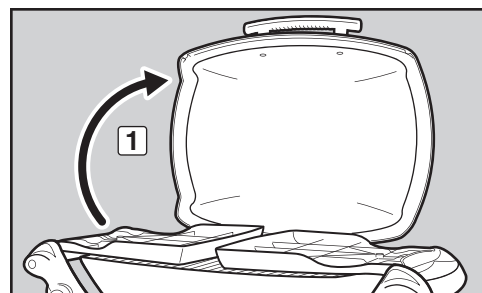
- B) Unfold the side tables (2).
- C) Make sure the burner control knob is turned to the off (O) position (3). Check by pushing burner control knob in and turning it clockwise until it stops.
- D) Confirm that the LPG cartridge is properly installed.
- E) Turn gas supply on by turning the regulator gas control valve anti-clockwise (4).
- F) Push burner control knob in and turn it anti-clockwise to start/high (flame) position (5).
- G) Push and hold in the electronic igniter button (6). You will hear the igniter clicking.
- H) Check that the burner is lit by looking through the cooking grates. You should see a flame.

**⚠ WARNING: Do not lean over the open grill while igniting.**

**⚠ WARNING: If burner fails to ignite within five seconds, stop, turn the burner control knob to off and wait five minutes to allow the gas to clear before you try again or light with a match.**

### TO EXTINGUISH BURNER

Push burner control knob in and turn it clockwise to the off (O) position.



**Some batteries have a plastic protective wrap around them. This plastic must be removed before you attempt to ignite your grill. Do not confuse this plastic with the battery label.**

# BURNER IGNITION & USAGE

## LIGHTING WITH A MATCH

A) Open the grill lid (1).

### ⚠ DANGER

**Failure to open the lid before igniting the grill's burner, or not waiting five minutes to allow the gas to clear if the grill does not light, may result in an explosive flare-up which can cause serious bodily injury or death.**

B) Unfold the side tables (2).

C) Make sure the burner control knob is turned to the off (O) position (3). Check by pushing burner control knob in and turning it clockwise until it stops.

D) Confirm that the LPG cartridge is properly installed.

E) Turn gas supply on by turning the regulator gas control valve anti-clockwise (4).

F) Strike a match and put the flame under the matchlight hole (5). While holding lit match, push burner control knob in and turn it anti-clockwise to start/high (⚡) position (6).

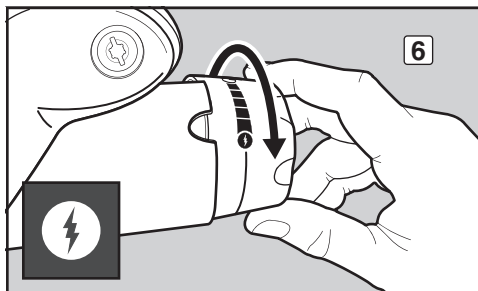
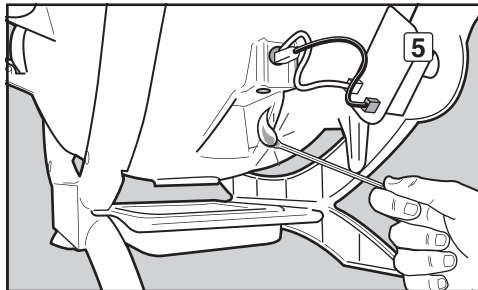
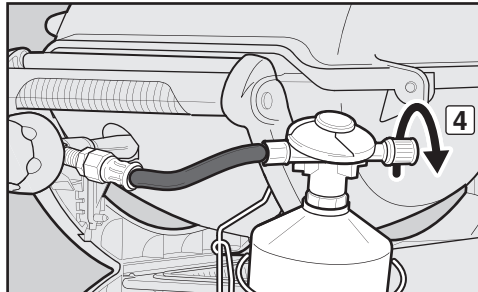
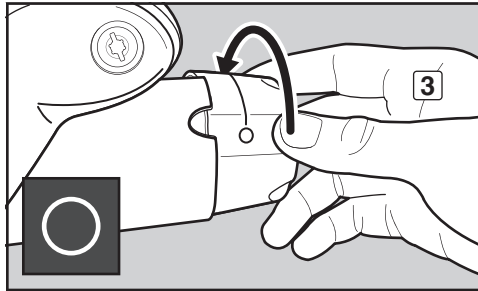
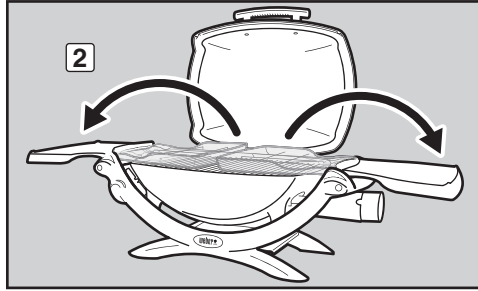
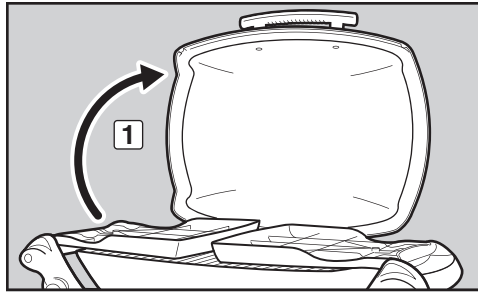
G) Check that the burner is lit by looking through the cooking grates. You should see a flame.

⚠ **WARNING: Do not lean over the open grill while igniting. Keep your face and body at least 30 cm (12 in) away from the matchlight hole when lighting the grill.**

⚠ **WARNING: If the burner fails to ignite within five seconds, stop, turn the burner control knob to off and wait five minutes to allow the gas to clear before you try again.**

## TO EXTINGUISH BURNER

Push burner control knob in and turn it clockwise to the off (O) position.



## TIPS & HINTS

- Always preheat the grill before cooking. Set burner(s) on high heat and close lid; preheat for 10 to 15 minutes.
- The temperature of your gas grill may run hotter than normal for the first few uses.
- Recipe barbecuing times are based on outside temperatures of 70°F (21°C) and little or no wind. Allow for more cooking time on cold or windy days, or at higher altitudes. Allow for less cooking time in extremely hot weather.
- Barbecuing conditions may require adjustment of the burner control knobs to attain the correct cooking temperatures.
- Sear meats and cook with the lid down for perfectly grilled food every time.
- Crowding food onto a cooking grate means more time will be required to cook the food.
- Trim excess fat from steaks, chops, and roasts, leaving no more than a scant ¼ inch (6.4 mm) of fat. Less fat makes clean-up easier, and is a virtual guarantee against unwanted flare-ups.
- In general, large pieces of meat will require more cooking time per pound (kilo) than small pieces of meat.
- Some foods, such as a casserole or thin fish fillets, will require a container for barbecuing. Disposable foil pans are very convenient, but any metal pan with ovenproof handles can also be used.
- Foods in containers, such as baked beans, will require more time if grilled in a deep casserole than in a shallow baking pan.
- Use tongs rather than a fork for turning and handling meats to avoid losing natural juices. Use two spatulas for handling large whole fish.
- Always be sure the cookbox and removable catch pan are clean and free from debris.
- Do not line the cookbox with foil. This could prevent the grease from flowing into the removable catch pan.
- If an unwanted flare-up should occur, turn burner(s) off and move food to another area of the cooking grate. Any flames will quickly subside. After flames subside, relight the grill. **NEVER USE WATER TO EXTINGUISH FLAMES ON A GAS GRILL.**
- Using a timer will help to alert you when “well done” is about to become “overdone.”
- A light coating of oil will help brown your food evenly and keep it from sticking to the cooking grate. Always brush or spray oil onto your food, not directly onto the cooking grate.
- When using a marinade, sauce or glaze with a high sugar content or other ingredients that burn easily, only brush it onto the food during the last 5 to 10 minutes of barbecuing.

## PREHEATING

Preheating the grill before barbecuing is important. To preheat: Light your grill according to the instructions in this Owner's Guide; then turn burner(s) to start/high (H) position, close the lid, and preheat grill. This will take 10 to 15 minutes depending on conditions such as air temperature and wind. After preheating, you can adjust the burner(s) as desired.

**⚠ WARNING: Should the burner(s) go out while grill is in operation, turn burner control knob(s) to off position. Open the lid and wait five minutes before attempting to relight grill, using the igniting instructions.**

## COVERED COOKING

All barbecuing is done with the lid down to provide uniform, evenly circulated heat. With the lid closed, the gas grill cooks much like a convection oven. The thermometer in the lid, a feature on some of our grills, indicates the cooking temperature inside the grill. All preheating and barbecuing is done with the lid down. No peeking — heat is lost every time you lift the lid.

## GREASE COLLECTION SYSTEM

Unique cooking grate design features angled, cast-iron rails that deflect drippings away from the burner tube(s), preventing flare-ups that can char food. The remaining drippings flow into a removable catch pan that slides out for easy cleaning.

For more barbecuing tips and recipes, visit [www.weber.com](http://www.weber.com).

# TROUBLESHOOTING

PROBLEMS	SOLUTIONS
<p>▶ <b>Burner does not ignite when you push the igniter button.</b></p>	<p>▶ Be sure that there is gas flow to the burner by attempting to match light your burner. Refer to "BURNER IGNITION—Lighting with a Match." If match lighting is successful, the problem lies in the ignition system. Refer to "MAINTAINING THE ELECTRONIC IGNITION SYSTEM."</p> <p>▶ Be sure that wires are correctly inserted into terminals on igniter electrode assembly. Check that the wires are connected to terminals on the push button igniter or the electronic igniter module. Refer to "MAINTAINING THE ELECTRONIC IGNITION SYSTEM."</p> <p>▶ If a new battery is installed, confirm that battery's plastic wrapping has been removed. Verify that the battery is in good condition and has been installed correctly. Refer to "MAINTAINING THE ELECTRONIC IGNITION SYSTEM."</p>
<p>▶ <b>Burner does not ignite, or flame is low when burner control knob is on high (H) position.</b></p>	<p>▶ Fuel could be low or empty. Replace cartridge.</p>
<p>▶ <b>Burner flame pattern is erratic.</b></p> <p>▶ <b>Flame is low when burner control knob is on high (H) position.</b></p> <p>▶ <b>Flames do not run the whole length of the burner tube.</b></p>	<p>▶ Clean burner ports that run down the entire length of burner tube. Refer to "ANNUAL MAINTENANCE."</p>
<p>▶ <b>Burner burns with a yellow or orange flame, in conjunction with the smell of gas.</b></p>	<p>▶ Inspect spider/insect screen for possible obstructions. (Blockage of holes.) Clean spider/insect screen. Refer to "ANNUAL MAINTENANCE."</p>
<p>▶ <b>Experiencing flare-ups.</b></p> <p>▶ <b>⚠ CAUTION: Do not line the cookbox with aluminium foil.</b></p>	<p>▶ Grill must be preheated with burner on high for 10 to 15 minutes.</p> <p>▶ Clean the cooking grates thoroughly to remove grease. Refer to "CLEANING THE INSIDE OF THE GRILL."</p> <p>▶ The cookbox may be dirty and is not allowing grease to flow into removable catch pan. Clean cookbox. Refer to "CLEANING THE INSIDE OF THE GRILL."</p>
<p>▶ <b>Inside of lid appears to be "peeling."</b> (Resembles paint peeling.)</p>	<p>▶ The inside of the lid is cast aluminium. It is not painted. It cannot "peel." What you are seeing is baked-on grease that has turned to carbon and is flaking off. <b>THIS IS NOT A DEFECT.</b> Clean thoroughly. Refer to "CLEANING THE INSIDE OF THE GRILL."</p>

If problems cannot be corrected by using these methods, please contact the Customer Service Representative in your area using the contact information on our web site. Log onto [www.weber.com](http://www.weber.com).

# ANNUAL MAINTENANCE

## KEEPING YOUR WEBER GAS GRILL IN TIP-TOP SHAPE

### **⚠ DANGER**

Failure to correct any problems described on this page may result in a fire, which can cause serious bodily injury or death, and cause damage to property.

To keep your gas grill performing as safely and efficiently as on day one, we strongly recommend that you inspect and clean the spider/insect screen(s) and burner tube(s) at least once a year. Below is important information about these two areas of the grill that should undergo annual maintenance.

If you observe an incorrect flame pattern or blocked burner port, proceed to the "BURNER TUBE CLEANING OR REPLACEMENT" instructions on the following page.

### BURNER FLAME PATTERN

The burner tube(s) in your gas grill was/were factory set for the correct air and gas mixture. The correct flame pattern is shown in illustration and described below:

- Burner tube(s) (1)
- Tips occasionally flicker yellow (2)
- Light blue (3)
- Dark blue (4)

Check burner flame pattern. If the flames do not match the above description, it could be an indication that the spider/insect screen(s) has/have become dirty or blocked.

### WEBER SPIDER/INSECT SCREEN(S)

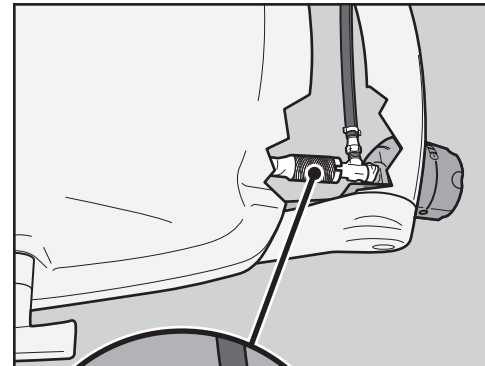
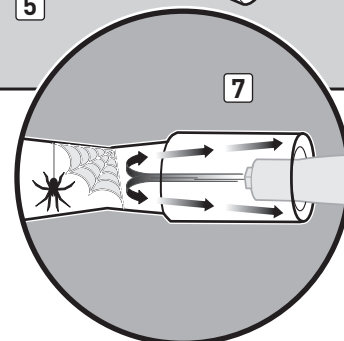
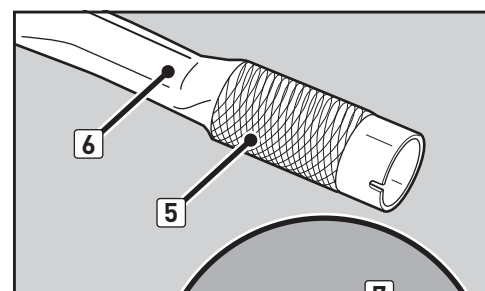
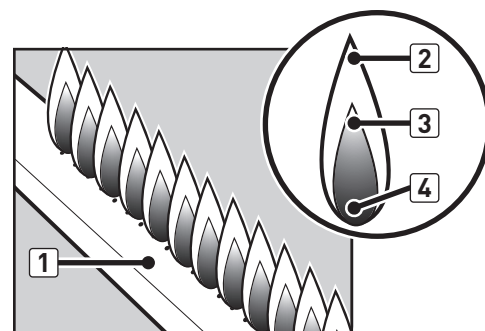
The combustion air opening(s) of the burner tube(s) (5) is/are fitted with stainless steel screen(s) to help prevent spiders and other insects from spinning webs and building nests inside the venturi section (6) of the burner tube(s). These nests can obstruct the normal gas flow, and can cause gas to flow back out of the combustion air opening(s) (7). Symptoms of this kind of obstruction include the odour of gas in conjunction with burner flames that appear yellow and lazy. This obstruction could result in a fire in and around the gas valve(s), causing serious damage to your grill (8).

*NOTE: If a spider/insect screen becomes damaged or cannot be cleaned, please contact the Customer Service Representative in your area using the contact information on our web site. Log onto [www.weber.com](http://www.weber.com).*

### BURNER TUBE PORTS

Over time, from repeated use of the grill, the burner tube ports will become dirty. Blocked and dirty ports can restrict full gas flow. Following are ways to determine whether burner tube ports are dirty or blocked.

- Grill does not reach desired temperature
- Grill heats unevenly
- One or more of the burner(s) do not ignite



# ANNUAL MAINTENANCE

## BURNER TUBE CLEANING OR REPLACEMENT

### Confirm that Grill Is Off and Cool

- A) Check that the burner control knob is in the off (O) position. Check by pushing burner control knob in and turning it clockwise until it stops.
- B) Disconnect the cylinder.
- C) Remove the lid.
- D) Remove cooking grates.

### Remove Burner Tube

You will need: A 3/8" nut driver.

- A) Remove the screw that holds the burner tube to the cookbox (1).
- B) Carefully slide the burner tube out from the cookbox (2).

### Clean Burner Tube

You will need: A torch, a wire (a straightened-out coat hanger), a suitable stainless steel bristle brush, and a soft bristle brush (toothbrush).

- A) Look inside the burner tube with a torch (3).
- B) Clean any debris or blockage from the inside of the burner tube with the wire (4).
- C) Check spider/insect screen at the end of the burner tube and clean it using the soft bristle brush (5).

**⚠ CAUTION: Do not clean the spider/insect screen with hard or sharp tools. Do not dislodge the spider/insect screen or enlarge the screen openings.**

- D) Use the steel bristle brush to clean the outside of the burner tube. This is done to make sure all burner ports (openings) running along the length of the tube are fully open (6).

**⚠ CAUTION: Do not enlarge the burner ports when cleaning.**

### Reinstall Burner Tube

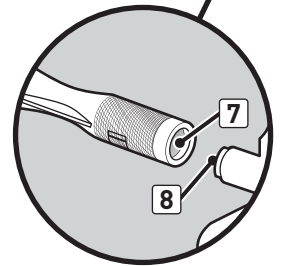
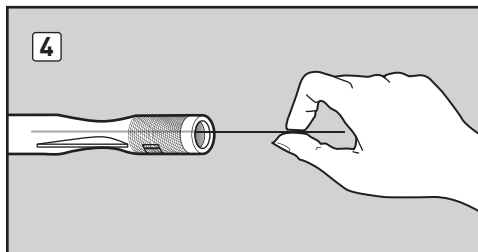
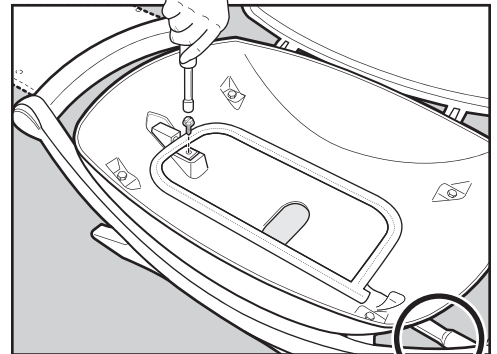
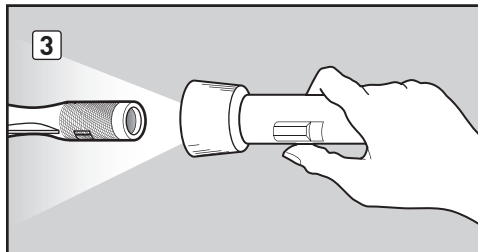
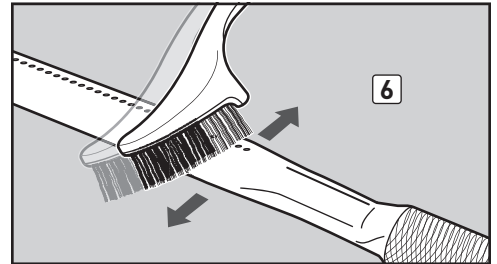
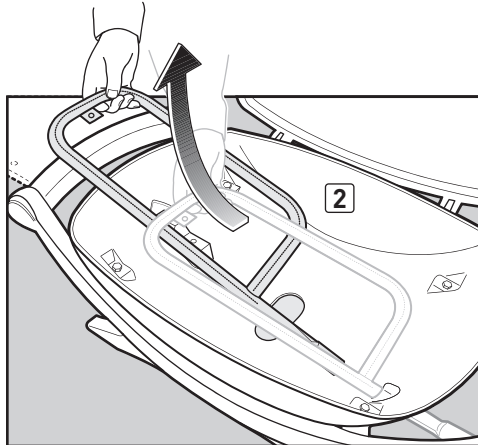
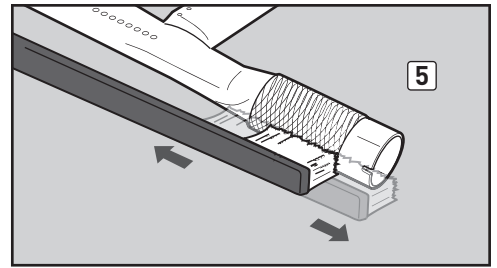
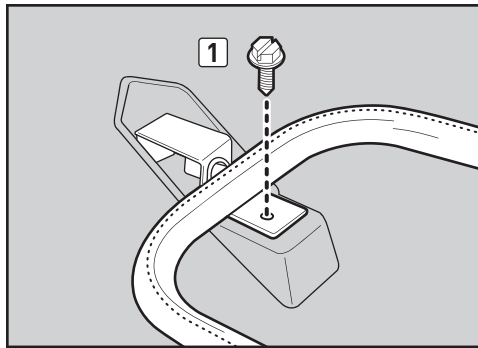
You will need: A 3/8" nut driver.

- A) Carefully slide the burner tube back into hole in right side of cookbox, aligning burner tube opening with valve orifice.
- B) Reinstall screw that holds the burner tube to the cookbox.

**⚠ CAUTION: The burner tube opening (7) must be positioned properly over the valve orifice (8).**

**⚠ WARNING: You should check for gas leaks every time you disconnect and reconnect a gas fitting.**

- C) Reinstall the lid.
- D) Replace cooking grates.





## BEAUTIFUL— INSIDE AND OUT

WEBER grill owners take a lot of pride in their grills. Flaunt your pride and joy. Keep your grill clean and beautiful—inside and out—by following these routine maintenance steps.

### CLEANING THE OUTSIDE OF THE GRILL

To keep the outside of your grill looking its best, use the following guidelines for safe cleaning.

**⚠ WARNING: Turn your gas grill off and wait for it to cool before cleaning it.**

#### Painted, Enamelled and Plastic Surfaces

Use a warm, soapy water solution to clean outside surfaces; then rinse with water.

**IMPORTANT: Do not use cleaners that contain acid, mineral spirits, or xylene. Do not use oven cleaner, abrasive cleansers (kitchen cleansers), cleaners that contain citrus products, or abrasive cleaning pads on grill or cart surfaces.**

Fold-out tables are not to be used as cutting boards.

### CLEANING THE INSIDE OF THE GRILL

To keep your grill performing safely and efficiently, it is important to remove any debris and excess grease that may have accumulated on the inside of the grill. Use the following guidelines for safe cleaning.

#### Inside Lid

Flaking, built-up grease resembles paint flakes. Wipe inside of lid with paper towel to prevent grease build-up. Wash inside lid with warm, soapy water; then rinse with water.

#### Cookbox Components & Burner Tube

You will need: A stainless steel bristle brush, and a stiff plastic scraper.

A) Scrape and brush the cooking grates with the scraper and brush. Remove the cooking grates and set aside.

**⚠ CAUTION: Grill brushes should be checked for loose bristles and excessive wear on a regular basis. Replace brush if any loose bristles are found on cooking grates or brush. Weber recommends purchasing a new stainless steel grill brush at the beginning of every spring.**

**⚠ CAUTION: Do not clean cooking grates in a self-cleaning oven.**

B) Brush any debris off of burner tube. Do not enlarge burner ports (openings) running along length of burner tube **(1)**.

C) When cleaning is complete, replace the cooking grates.

#### Cookbox

Wash inside of cookbox with warm, soapy water; then rinse with water.

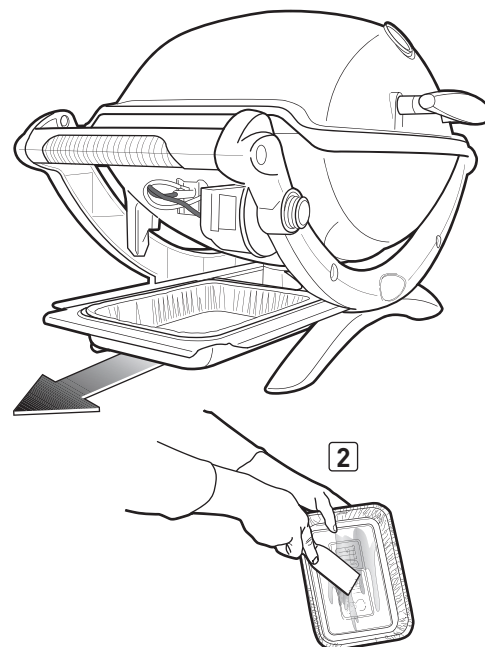
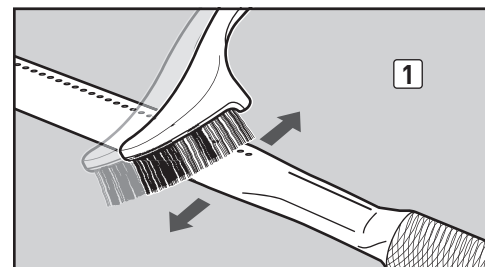
#### Removable Catch Pan and Disposable Drip Pan

Your grill was built with a grease collection system, which funnels grease away from food and into a removable catch pan. For your convenience, you can also line the removable catch pan with a Weber disposable drip pan, which will help keep the removable catch pan cleaner longer.

Cleaning the removable catch pan is just as important as cleaning the cookbox. Check the removable catch pan for grease build-up each time you use your grill. Remove excess grease with a plastic scraper **(2)**. Wash the removable catch pan with warm, soapy water and rinse with water.

**⚠ WARNING: Check the removable catch pan or disposable drip pan for grease build-up before each use. Remove excess grease to avoid a grease fire. A grease fire can cause serious bodily injury or damage to property.**

**⚠ CAUTION: Do not line the cookbox, removable catch pan or disposable drip pan with aluminium foil.**



**To obtain replacement parts, contact the local retailer in your area or log onto [www.weber.com](http://www.weber.com). If you need further assistance, contact your Customer Service Representative.**

## IGNITION SYSTEM OPERATIONS

The igniter supplies a spark to the igniter electrode assembly. Whether you are performing routine maintenance or a troubleshooting check on the ignition system, read the following to keep your ignition system working properly.

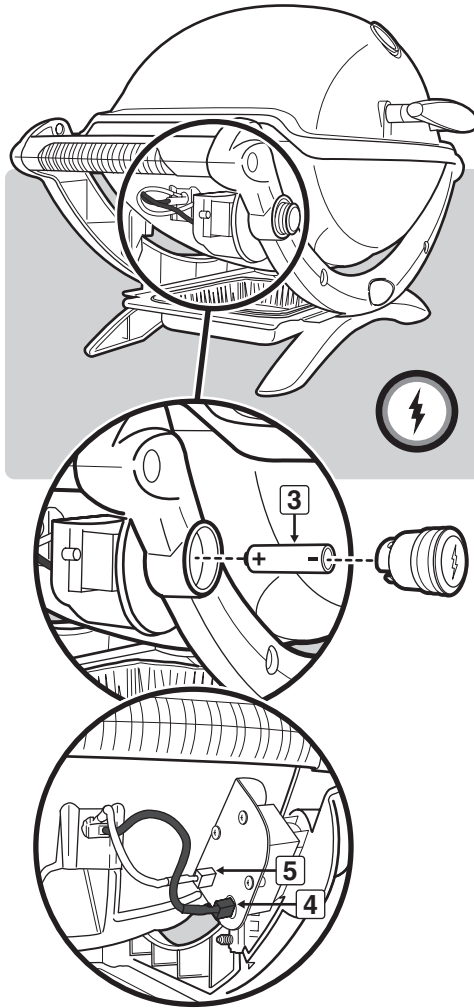
**⚠ WARNING: All gas controls and supply valves should be in the OFF position.**

If the igniter fails to ignite your Q grill, you will need to pinpoint where the problem is occurring: with the gas flow or with the ignition system. Begin by attempting to match light your burner. Refer to "BURNER IGNITION—Lighting with a Match." If match lighting is successful, the problem lies in the ignition system.

## MAINTAINING THE ELECTRONIC IGNITION SYSTEM

- Verify that the AAA battery (alkaline only) is in good condition and is installed correctly **(3)**. Some batteries have a plastic protective wrap around them. This plastic must be removed before installing battery. Do not confuse this plastic with the battery label.
- Make sure that both igniter wires are properly attached to the igniter module. Black wire to black terminal **(4)**, white wire to white terminal **(5)**.
- Make sure the electronic igniter button is working by listening for clicking and looking for sparks at burner.

**If the electronic ignition system still fails to ignite, contact the Customer Service Representative in your area using the contact information on our web site. Log onto [www.weber.com](http://www.weber.com).**



## ROUTINE MAINTENANCE

**⚠ ATTENTION: This product has been safety-tested and is only certified for use in a specific country. Refer to country designation located on outside of box.**

These parts may be gas-carrying or gas-burning components. Please contact Weber-Stephen Products LLC Customer Service Department for genuine Weber-Stephen Products LLC replacement part(s) information.

**⚠ WARNING: Do not attempt to make any repair to gas-carrying or gas-burning components without contacting Weber-Stephen Products LLC Customer Service Department. Your actions, if you fail to follow this product warning, may cause a fire or an explosion resulting in serious personal injury or death and damage to property.**



### **Weber (Shanghai) Trading Ltd.**

102H-F, Apollo Building, No.1440 Yan'An Road (M), Jing'An District  
Shanghai, CHINA 200040  
+86 21 5289 5665

SupportAsia@WeberStephen.com | weber.com

### **Weber-Stephen Products (Hong Kong) Limited**

Room 8-12 17F, Sterling Centre, No.11 Cheung Yue Street  
Cheung Sha Wan, HONG KONG  
Singapore: +65 3159 1184  
Hong Kong: +852 3051 9188  
Indonesia: +62 212 926 4138  
Philippines: +63 2395 3488

SupportAsia@WeberStephen.com | weber.com

### **Weber-Stephen Barbecue Products India Pvt Ltd**

Kh 415, Ghitorni, Main MG Road, ( Opp Metro Pillar 126 )  
New Delhi, INDIA 110030  
+91 990 002 7067

customercare@weberindia.com | weberindia.com

### **Weber-Stephen Products Japan GK**

1-9-10. Minato-Ku. Roppongi Itchome,  
Arc Hills Sengokuyama Mori Tower 28F Baker and McKenzie Office  
Tokyo, JAPAN 106-0032  
+81 3-4588-9530

SupportAsia@WeberStephen.com | weber.com



**WEBER-STEPHEN PRODUCTS LLC**  
www.weber.com

© 2018 Designed and engineered by Weber-Stephen Products LLC,  
1415 S. Roselle Road, Palatine, Illinois 60067 USA.

The WEBER Q grill includes designs and features originally created by Robert DeMars of Original Ideas, Inc.