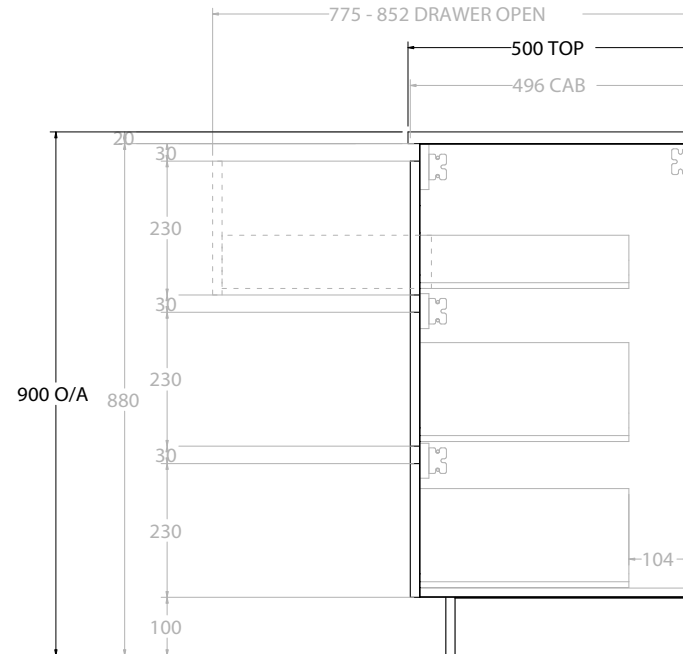
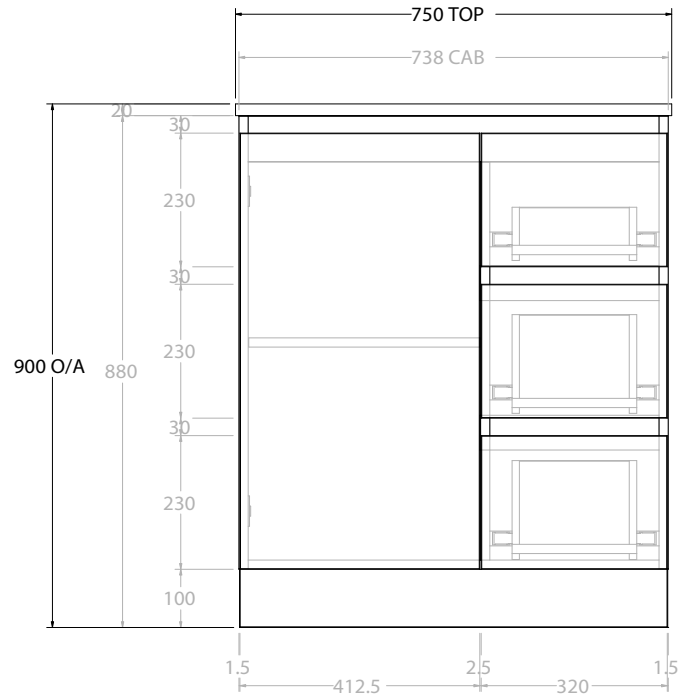
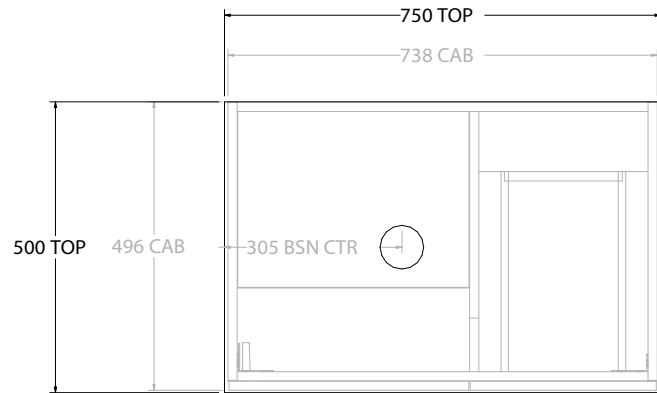


PRODUCT:	GLACIER DOOR & DRAWER TRIO 750 FLOOR MOUNT CENTRE BASIN	
CODE:	LITE: GLLFCT0750WKC	PRO: GLPFCT0750WKC
MOUNTING:	FLOOR MOUNT	
SIZE:	750W X 500D X 900H	
CONFIGURATION:	DOOR & DRAWER	
VERSION:	01	DATE: 08/17/22

TOP:	BENCHTOP
BASIN POSITION:	CENTRE BASIN
FOR TOP OPTIONS PLEASE ADD ONE OF THE FOLLOWING TO THE END OF PRODUCT CODE:	
	CHERRY PIE = CP
	FRIDAY = FR
	CAESARSTONE = CS

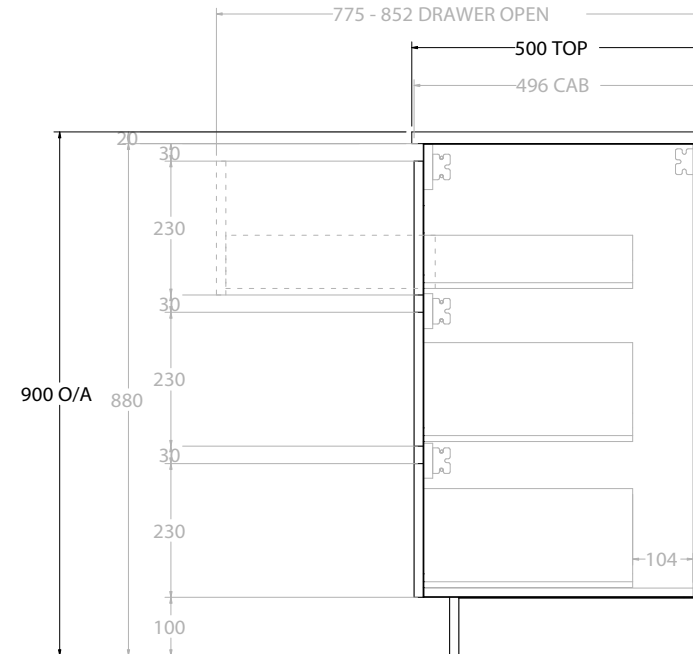
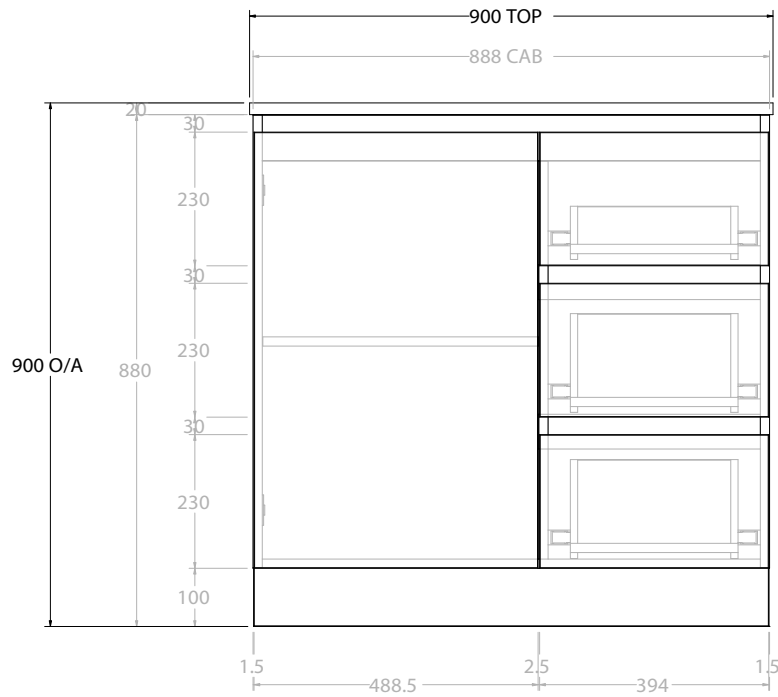
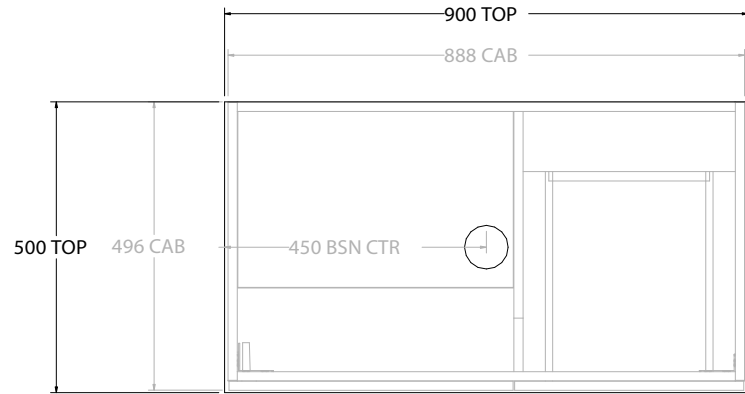
NOTES:
ALL DIMENSIONS ARE NOMINAL AND SUBJECT TO CHANGE. DO NOT DRILL OR ROUGH IN UNTIL YOU HAVE RECEIVED AND MEASURED YOUR PRODUCT. ALL DIMENSIONS ARE IN MILLIMETRES. DO NOT MEASURE FROM DRAWING.



PRODUCT:	GLACIER DOOR & DRAWER TRIO 750 FLOOR MOUNT OFFSET BASIN	
CODE:	LITE: GLLFCT0750WKL*	PRO: GLPFCT0750WKL*
MOUNTING:	FLOOR MOUNT	
SIZE:	750W X 500D X 900H	
CONFIGURATION:	DOOR & DRAWER	
VERSION:	01	DATE: 08/17/22

TOP:	BENCHTOP
BASIN POSITION:	OFFSET BASIN
FOR TOP OPTIONS PLEASE ADD ONE OF THE FOLLOWING TO THE END OF PRODUCT CODE:	
CHERRY PIE = CP	
FRIDAY = FR	
CAESARSTONE = CS	

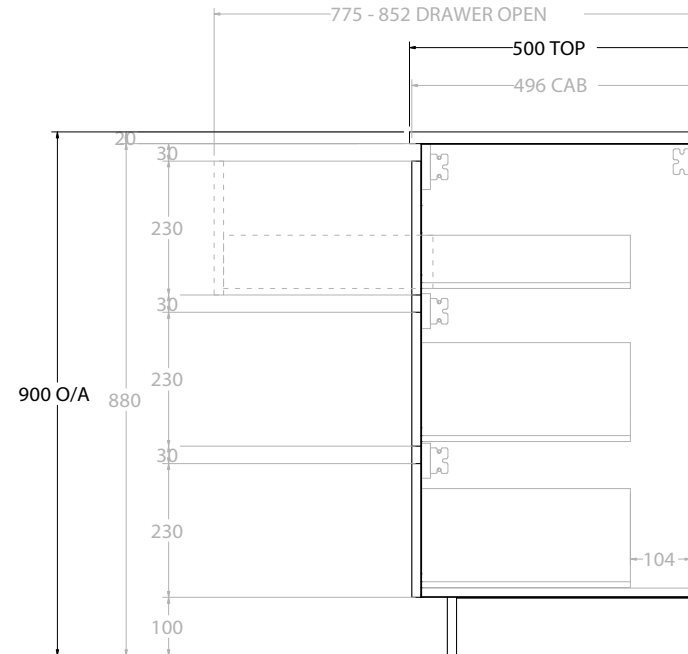
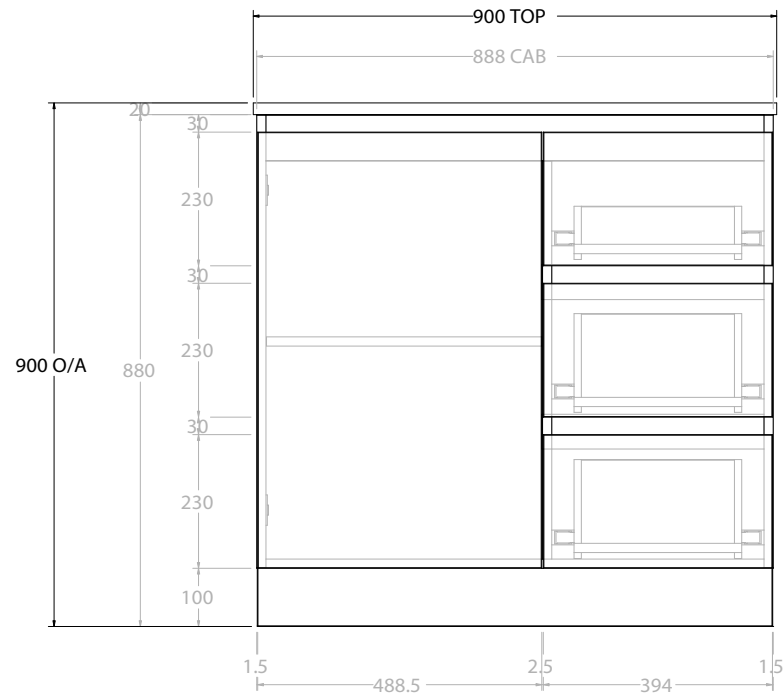
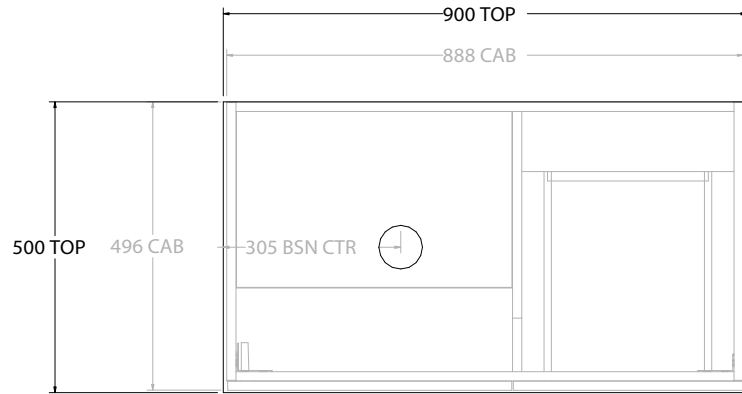
NOTES:
ALL DIMENSIONS ARE NOMINAL AND SUBJECT TO CHANGE.
DO NOT DRILL OR ROUGH IN UNTIL YOU HAVE RECEIVED AND MEASURED YOUR PRODUCT.
ALL DIMENSIONS ARE IN MILLIMETRES.
DO NOT MEASURE FROM DRAWING.
*LEFT HAND OFFSET PICTURED, RIGHT HAND OFFSET IS SAME BUT MIRRORED (REPLACE CODE SUFFIX L, WITH R)



PRODUCT:	GLACIER DOOR & DRAWER TRIO 750 FLOOR MOUNT CENTRE BASIN	
CODE:	LITE: GLLFCT0900WKC	PRO: GLPFCT0900WKC
MOUNTING:	FLOOR MOUNT	
SIZE:	900W X 500D X 900H	
CONFIGURATION:	DOOR & DRAWER	
VERSION:	01	DATE: 08/17/22

TOP:	BENCHTOP
BASIN POSITION:	CENTRE BASIN
FOR TOP OPTIONS PLEASE ADD ONE OF THE FOLLOWING TO THE END OF PRODUCT CODE:	
	CHERRY PIE = CP
	FRIDAY = FR
	CAESARSTONE = CS

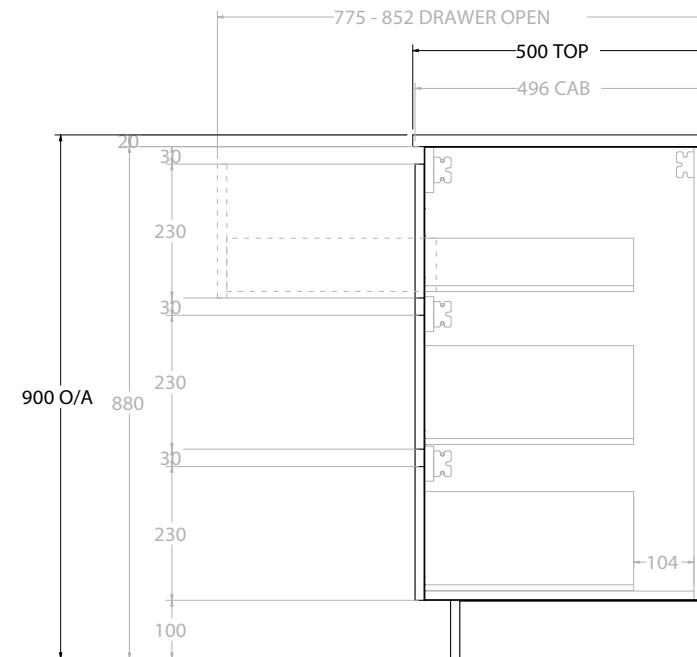
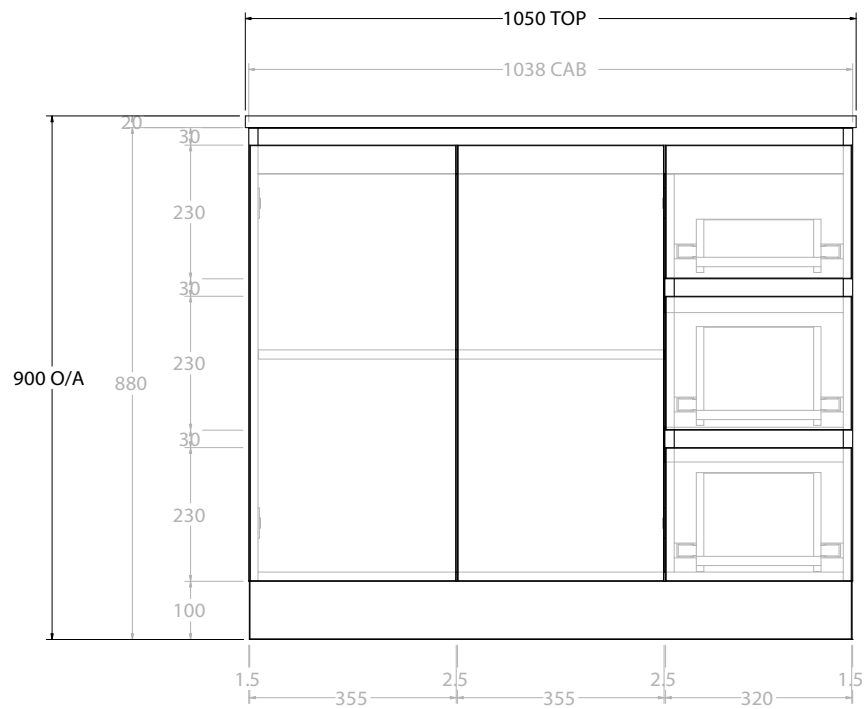
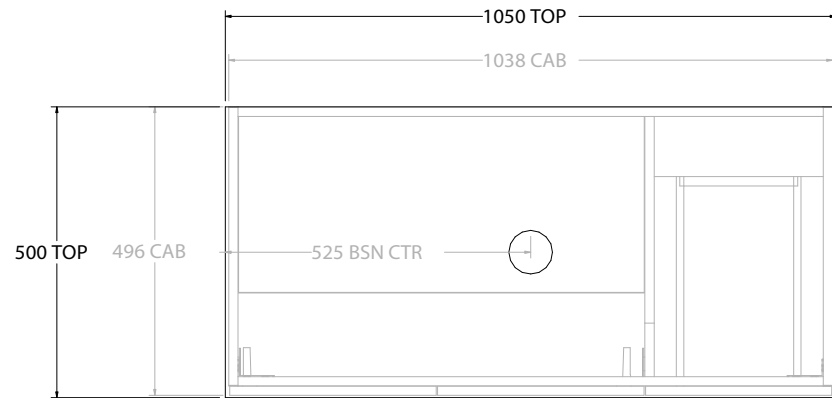
NOTES:
ALL DIMENSIONS ARE NOMINAL AND SUBJECT TO CHANGE. DO NOT DRILL OR ROUGH IN UNTIL YOU HAVE RECEIVED AND MEASURED YOUR PRODUCT. ALL DIMENSIONS ARE IN MILLIMETRES. DO NOT MEASURE FROM DRAWING.



PRODUCT:	GLACIER DOOR & DRAWER TRIO 900 FLOOR MOUNT OFFSET BASIN	
CODE:	LITE: GLLFCT0900WKL*	PRO: GLPFCT0900WKL*
MOUNTING:	FLOOR MOUNT	
SIZE:	900W X 500D X 900H	
CONFIGURATION:	DOOR & DRAWER	
VERSION:	01	DATE: 08/17/22

TOP:	BENCHTOP
BASIN POSITION:	OFFSET BASIN
FOR TOP OPTIONS PLEASE ADD ONE OF THE FOLLOWING TO THE END OF PRODUCT CODE:	
CHERRY PIE = CP	
FRIDAY = FR	
CAESARSTONE = CS	

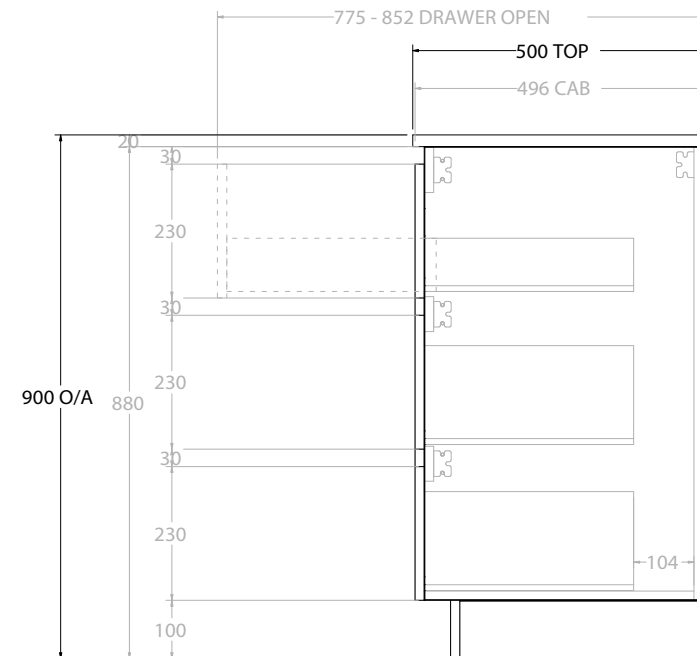
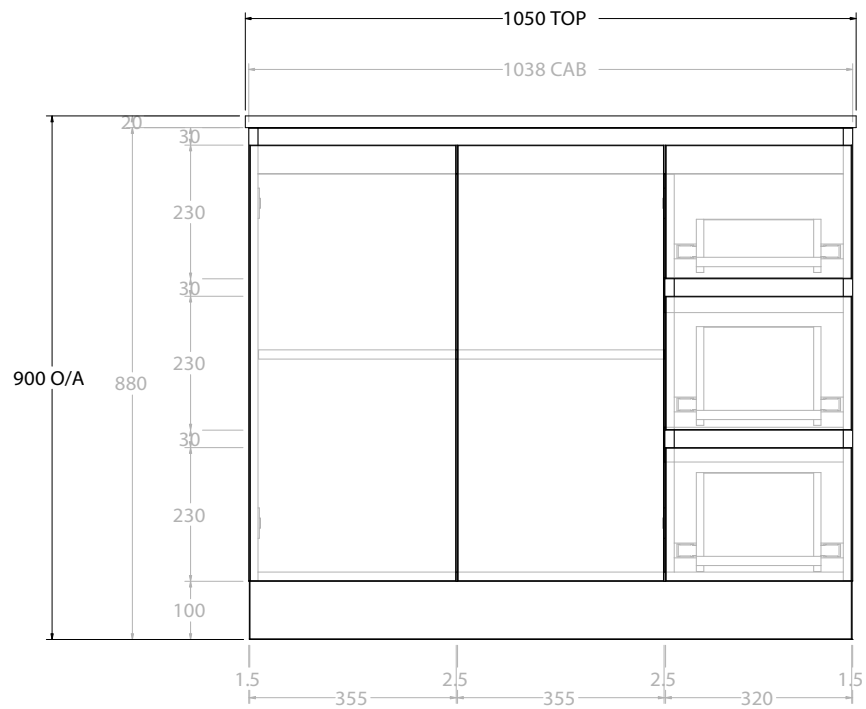
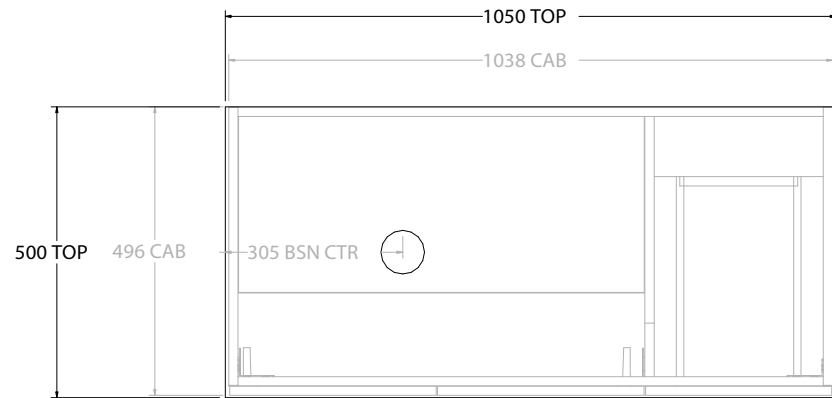
NOTES:
ALL DIMENSIONS ARE NOMINAL AND SUBJECT TO CHANGE.
DO NOT DRILL OR ROUGH IN UNTIL YOU HAVE RECEIVED AND MEASURED YOUR PRODUCT.
ALL DIMENSIONS ARE IN MILLIMETRES.
DO NOT MEASURE FROM DRAWING.
*LEFT HAND OFFSET PICTURED, RIGHT HAND OFFSET IS SAME BUT MIRRORED (REPLACE CODE SUFFIX L, WITH R)



PRODUCT:	GLACIER DOOR & DRAWER TRIO 1050 FLOOR MOUNT CENTRE BASIN	
CODE:	LITE: GLLFCT1050WKC	PRO: GLPFCT1050WKC
MOUNTING:	FLOOR MOUNT	
SIZE:	1050W X 500D X 900H	
CONFIGURATION:	DOOR & DRAWER	
VERSION:	01	DATE: 08/17/22

TOP:	BENCHTOP
BASIN POSITION:	CENTRE BASIN
FOR TOP OPTIONS PLEASE ADD ONE OF THE FOLLOWING TO THE END OF PRODUCT CODE:	
CHERRY PIE = CP	
FRIDAY = FR	
CAESARSTONE = CS	

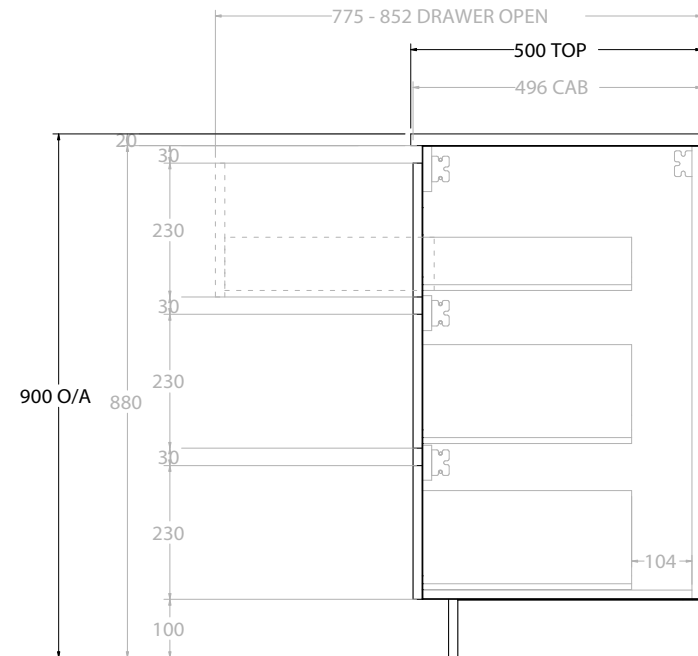
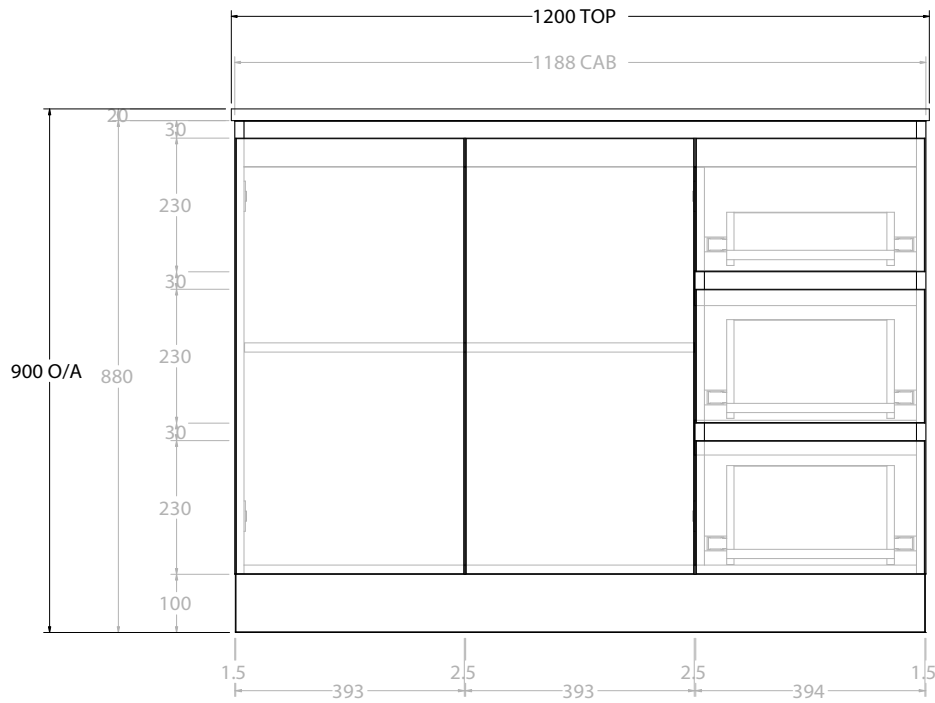
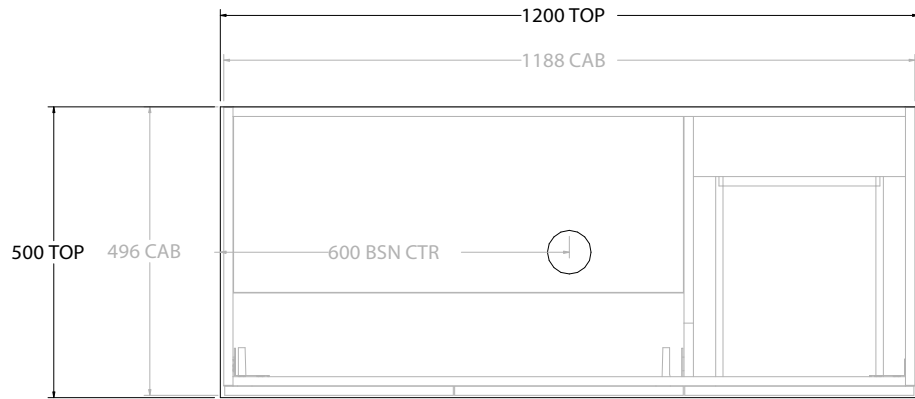
NOTES:
ALL DIMENSIONS ARE NOMINAL AND SUBJECT TO CHANGE. DO NOT DRILL OR ROUGH IN UNTIL YOU HAVE RECEIVED AND MEASURED YOUR PRODUCT. ALL DIMENSIONS ARE IN MILLIMETRES. DO NOT MEASURE FROM DRAWING.



PRODUCT:	GLACIER DOOR & DRAWER TRIO 1050 FLOOR MOUNT OFFSET BASIN	
CODE:	LITE: GLLFCT1050WKL*	PRO: GLPFCT1050WKL*
MOUNTING:	FLOOR MOUNT	
SIZE:	1050W X 500D X 900H	
CONFIGURATION:	DOOR & DRAWER	
VERSION:	01	DATE: 08/17/22

TOP:	BENCHTOP
BASIN POSITION:	OFFSET BASIN
FOR TOP OPTIONS PLEASE ADD ONE OF THE FOLLOWING TO THE END OF PRODUCT CODE:	
CHERRY PIE = CP	
FRIDAY = FR	
CAESARSTONE = CS	

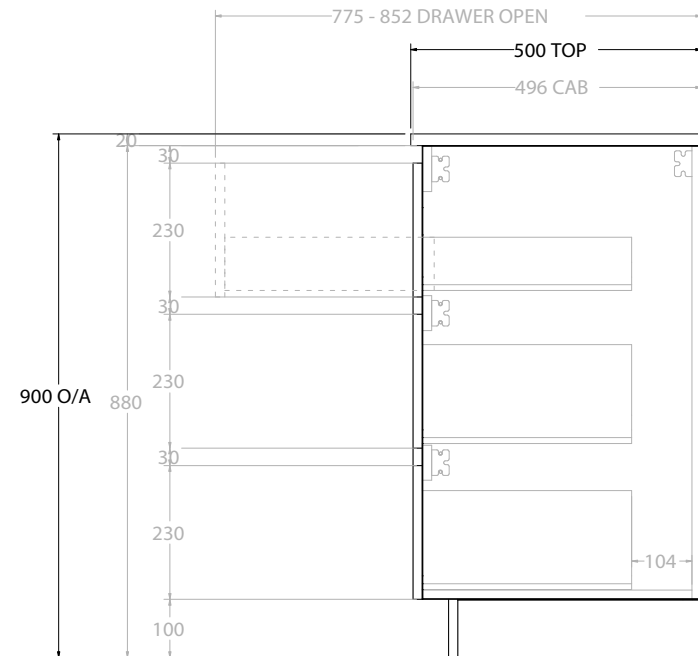
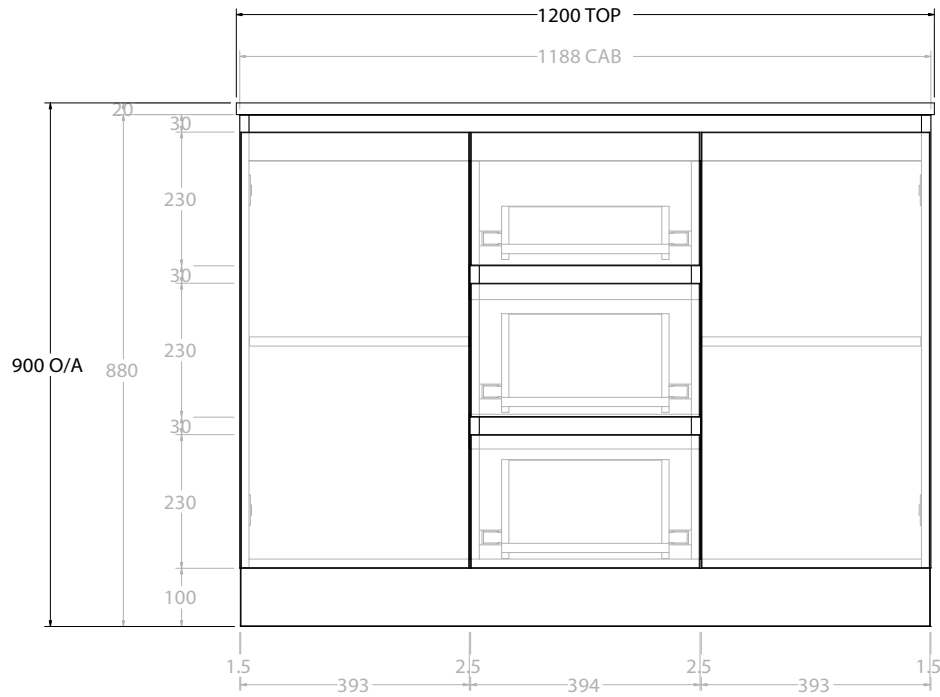
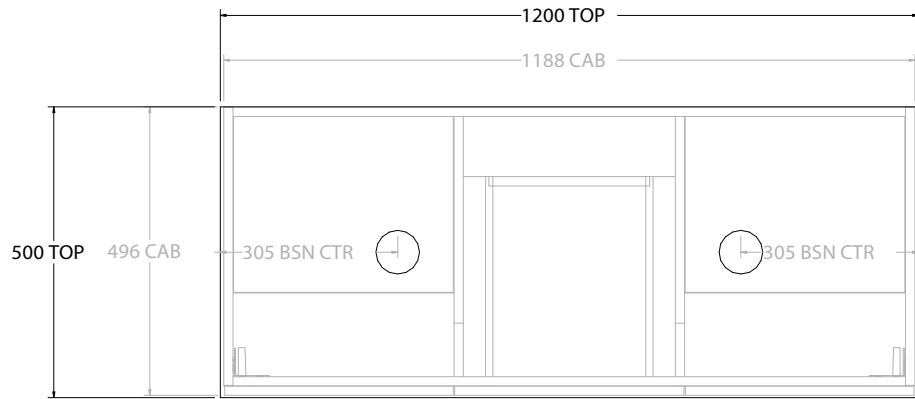
NOTES:
ALL DIMENSIONS ARE NOMINAL AND SUBJECT TO CHANGE.
DO NOT DRILL OR ROUGH IN UNTIL YOU HAVE RECEIVED AND MEASURED YOUR PRODUCT.
ALL DIMENSIONS ARE IN MILLIMETRES.
DO NOT MEASURE FROM DRAWING.
*LEFT HAND OFFSET PICTURED, RIGHT HAND OFFSET IS SAME BUT MIRRORED (REPLACE CODE SUFFIX L, WITH R)



PRODUCT:	GLACIER DOOR & DRAWER TRIO 1200 FLOOR MOUNT CENTRE BASIN	
CODE:	LITE: GLLFCT1200WKC	PRO: GLPFCT1200WKC
MOUNTING:	FLOOR MOUNT	
SIZE:	1200W X 500D X 900H	
CONFIGURATION:	DOOR & DRAWER	
VERSION:	01	DATE: 08/17/22

TOP:	BENCHTOP
BASIN POSITION:	CENTRE BASIN
FOR TOP OPTIONS PLEASE ADD ONE OF THE FOLLOWING TO THE END OF PRODUCT CODE:	
CHERRY PIE = CP	
FRIDAY = FR	
CAESARSTONE = CS	

NOTES:
ALL DIMENSIONS ARE NOMINAL AND SUBJECT TO CHANGE. DO NOT DRILL OR ROUGH IN UNTIL YOU HAVE RECEIVED AND MEASURED YOUR PRODUCT. ALL DIMENSIONS ARE IN MILLIMETRES. DO NOT MEASURE FROM DRAWING.

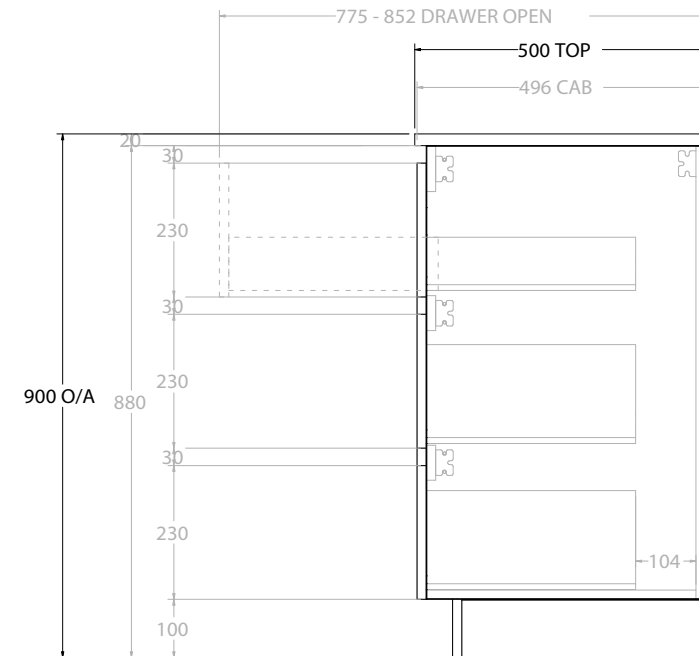
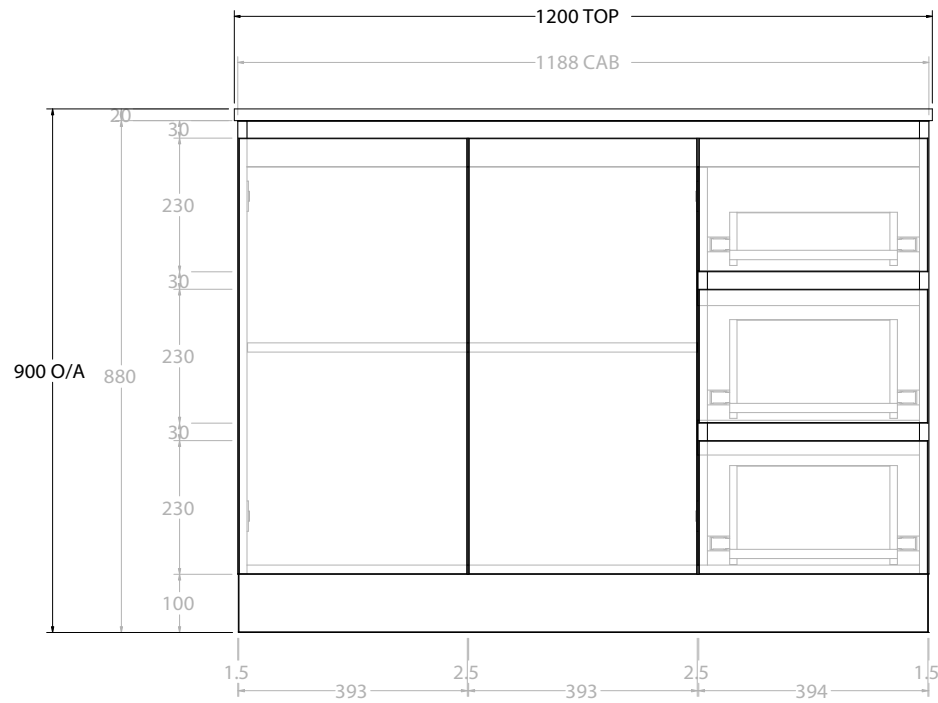
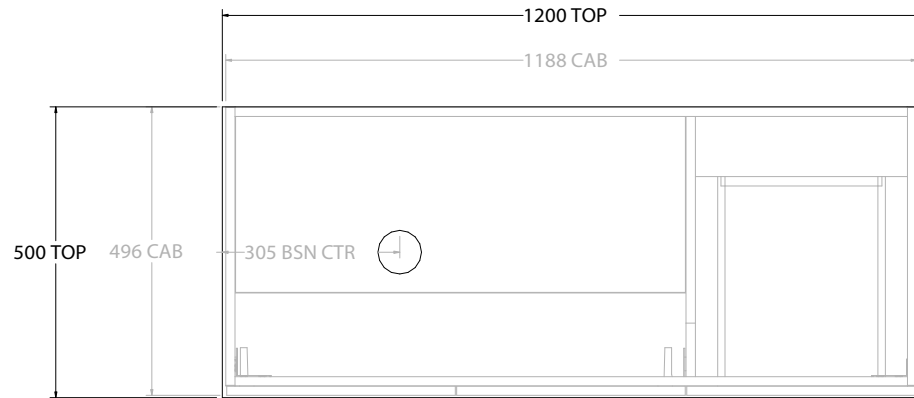


PRODUCT:	GLACIER DOOR & DRAWER TRIO 1200 FLOOR MOUNT DOUBLE BASIN	
CODE:	LITE: GLLFCT1200WKD	PRO: GLPFCT1200WKD
MOUNTING:	FLOOR MOUNT	
SIZE:	1200W X 500D X 900H	
CONFIGURATION:	DOOR & DRAWER	
VERSION:	01	DATE: 08/17/22

TOP:	BENCHTOP
BASIN POSITION:	DOUBLE BASIN
FOR TOP OPTIONS PLEASE ADD ONE OF THE FOLLOWING TO THE END OF PRODUCT CODE:	
CHERRY PIE = CP	
FRIDAY = FR	
CAESARSTONE = CS	

NOTES:
ALL DIMENSIONS ARE NOMINAL AND SUBJECT TO CHANGE.
DO NOT DRILL OR ROUGH IN UNTIL YOU HAVE RECEIVED AND MEASURED YOUR PRODUCT.
ALL DIMENSIONS ARE IN MILLIMETRES.
DO NOT MEASURE FROM DRAWING.

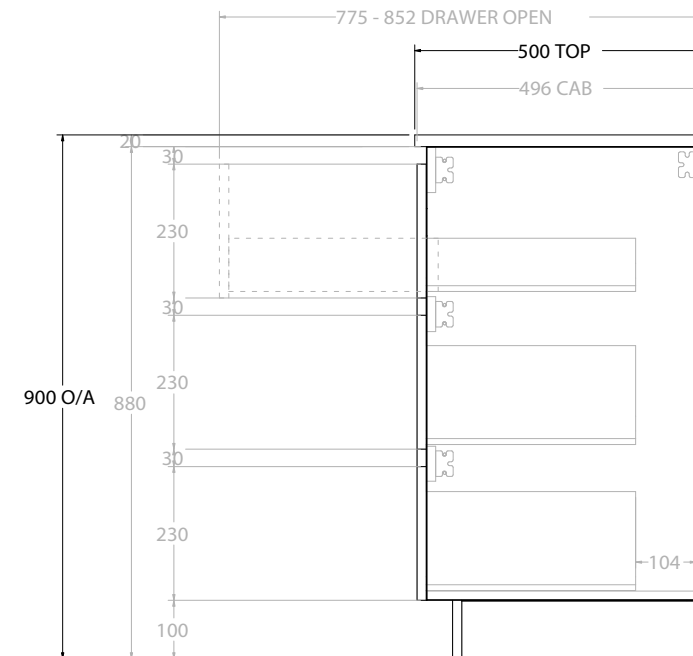
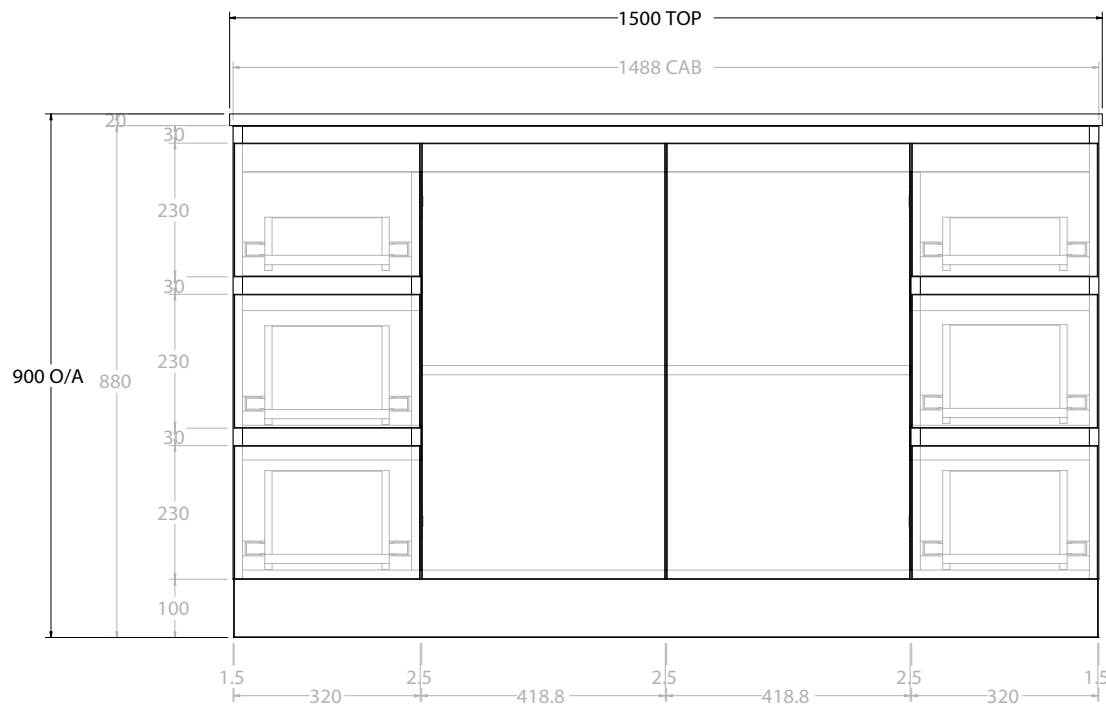
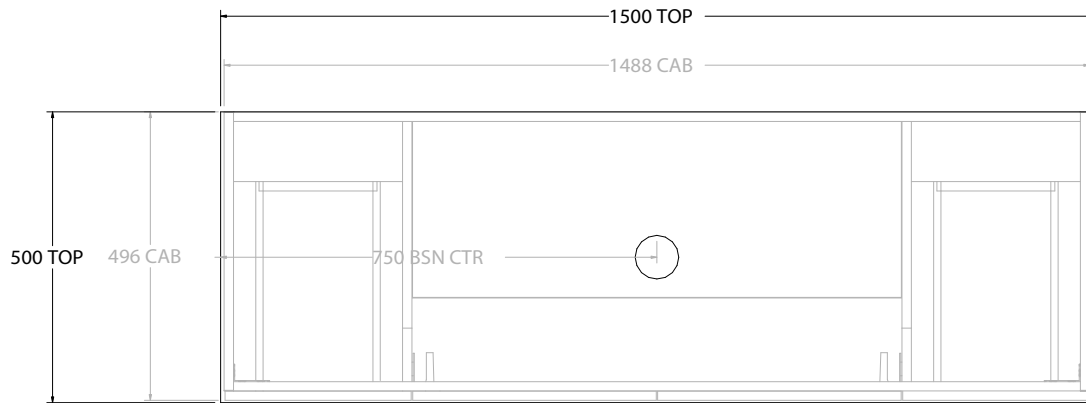




PRODUCT:	GLACIER DOOR & DRAWER TRIO 1200 FLOOR MOUNT OFFSET BASIN	
CODE:	LITE: GLLFCT1200WKL*	PRO: GLPFCT1200WKL*
MOUNTING:	FLOOR MOUNT	
SIZE:	1200W X 500D X 900H	
CONFIGURATION:	DOOR & DRAWER	
VERSION:	01	DATE: 08/17/22

TOP:	BENCHTOP
BASIN POSITION:	OFFSET BASIN
FOR TOP OPTIONS PLEASE ADD ONE OF THE FOLLOWING TO THE END OF PRODUCT CODE:	
CHERRY PIE = CP	
FRIDAY = FR	
CAESARSTONE = CS	

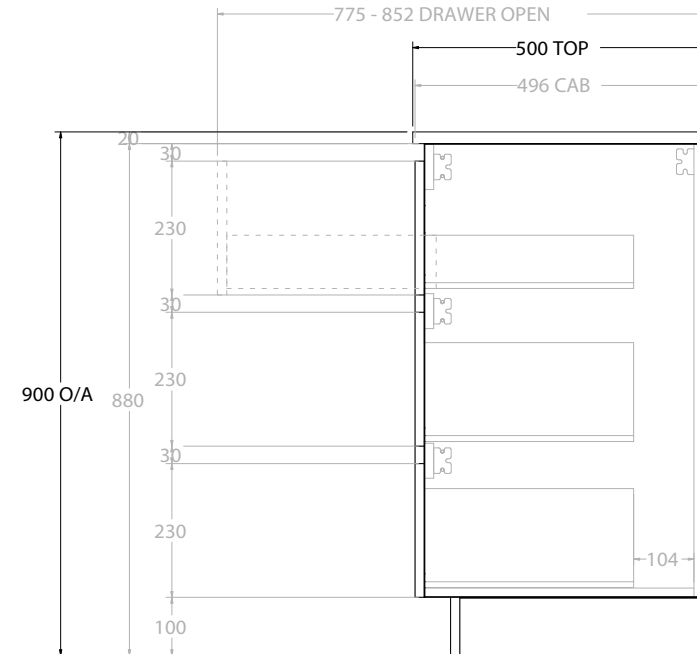
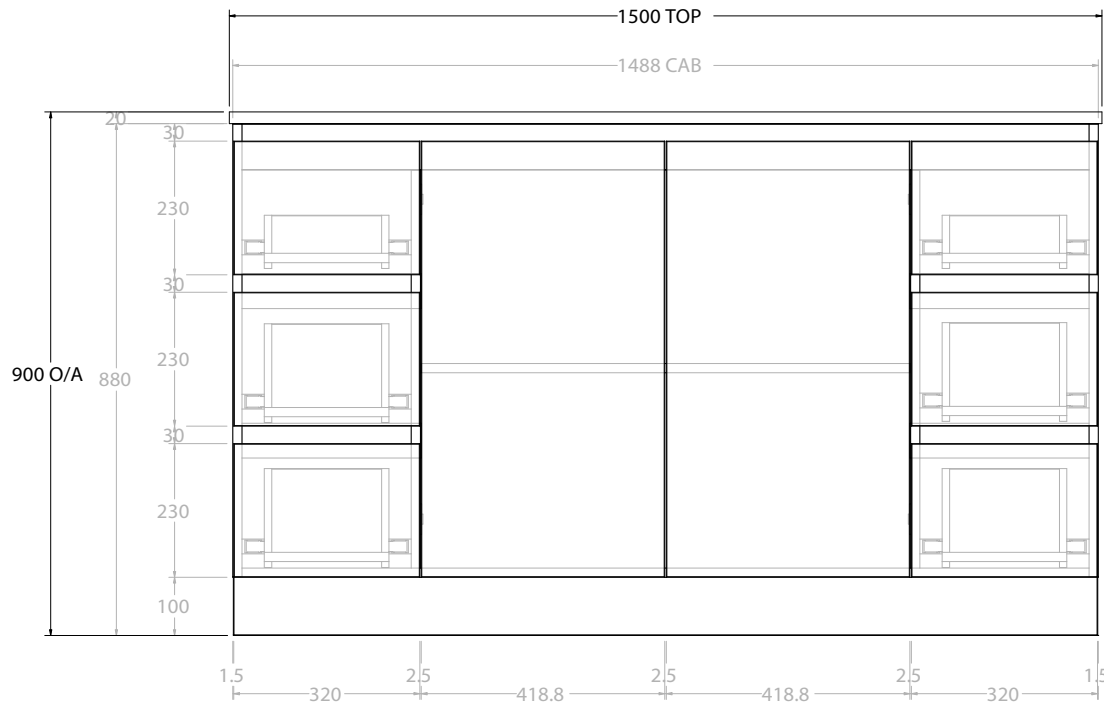
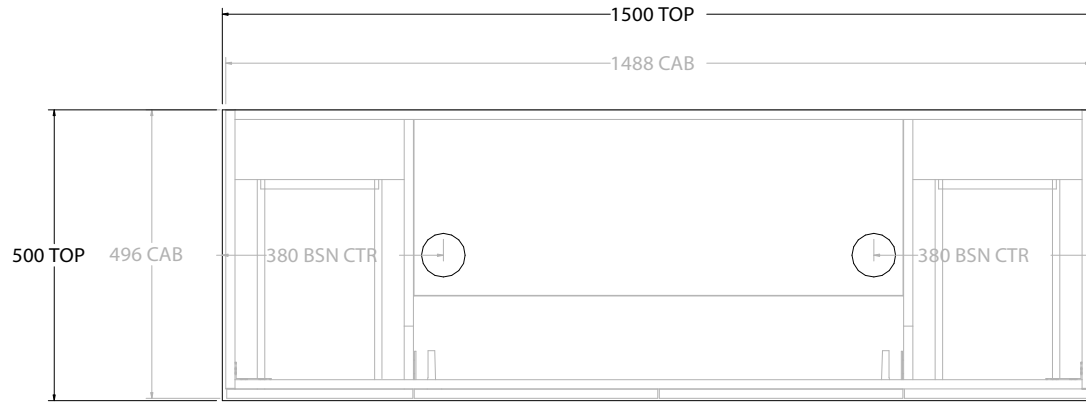
NOTES:
ALL DIMENSIONS ARE NOMINAL AND SUBJECT TO CHANGE.
DO NOT DRILL OR ROUGH IN UNTIL YOU HAVE RECEIVED AND MEASURED YOUR PRODUCT.
ALL DIMENSIONS ARE IN MILLIMETRES.
DO NOT MEASURE FROM DRAWING.
*LEFT HAND OFFSET PICTURED, RIGHT HAND OFFSET IS SAME BUT MIRRORED (REPLACE CODE SUFFIX L, WITH R)



PRODUCT:	GLACIER DOOR & DRAWER TRIO 1500 FLOOR MOUNT CENTRE BASIN	
CODE:	LITE: GLLFCT1500WKC	PRO: GLPFCT1500WKC
MOUNTING:	FLOOR MOUNT	
SIZE:	1500W X 500D X 900H	
CONFIGURATION:	DOOR & DRAWER	
VERSION:	01	DATE: 08/17/22

TOP:	BENCHTOP
BASIN POSITION:	CENTRE BASIN
FOR TOP OPTIONS PLEASE ADD ONE OF THE FOLLOWING TO THE END OF PRODUCT CODE:	
	CHERRY PIE = CP
	FRIDAY = FR
	CAESARSTONE = CS

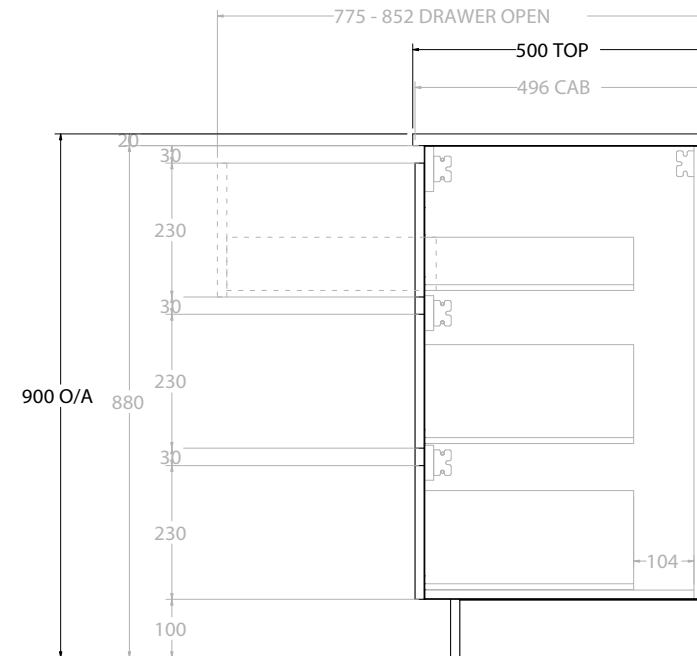
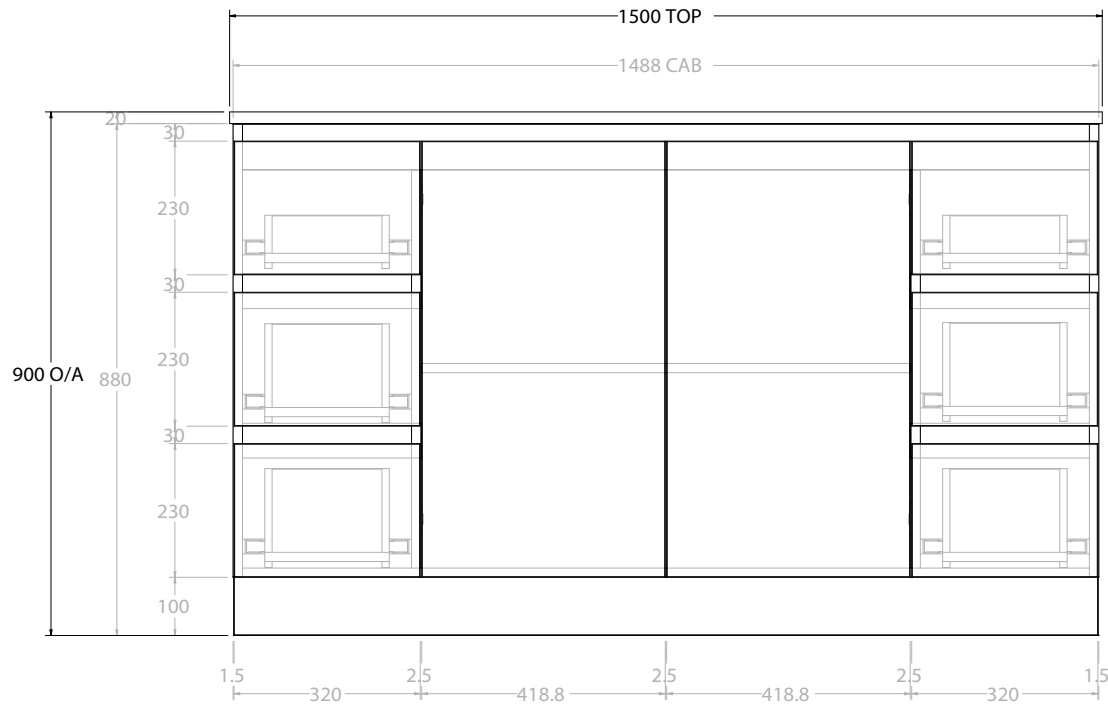
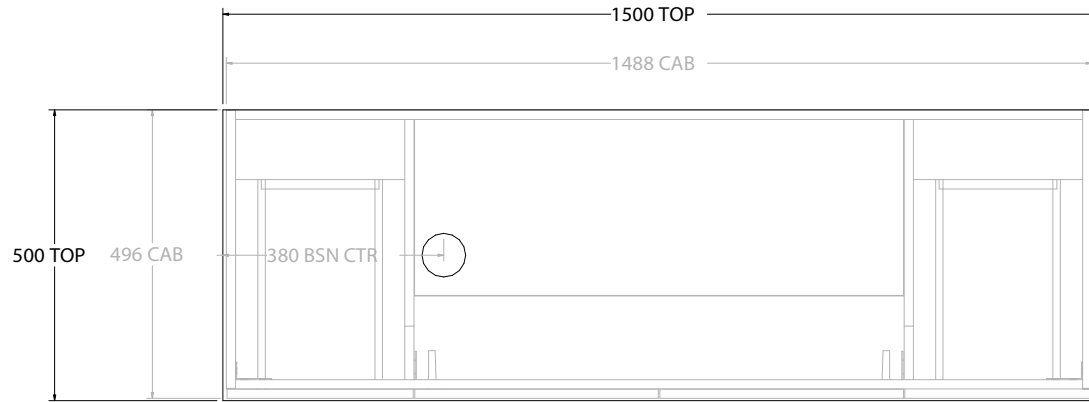
NOTES:
ALL DIMENSIONS ARE NOMINAL AND SUBJECT TO CHANGE.
DO NOT DRILL OR ROUGH IN UNTIL YOU HAVE RECEIVED AND MEASURED YOUR PRODUCT.
ALL DIMENSIONS ARE IN MILLIMETRES.
DO NOT MEASURE FROM DRAWING.



PRODUCT:	GLACIER DOOR & DRAWER TRIO 1500 FLOOR MOUNT DOUBLE BASIN	
CODE:	LITE: GLLFCT1500WKD	PRO: GLPFCT1500WKD
MOUNTING:	FLOOR MOUNT	
SIZE:	1500W X 500D X 900H	
CONFIGURATION:	DOOR & DRAWER	
VERSION:	01	DATE: 08/17/22

TOP:	BENCHTOP
BASIN POSITION:	DOUBLE BASIN
FOR TOP OPTIONS PLEASE ADD ONE OF THE FOLLOWING TO THE END OF PRODUCT CODE:	
	CHERRY PIE = CP
	FRIDAY = FR
	CAESARSTONE = CS

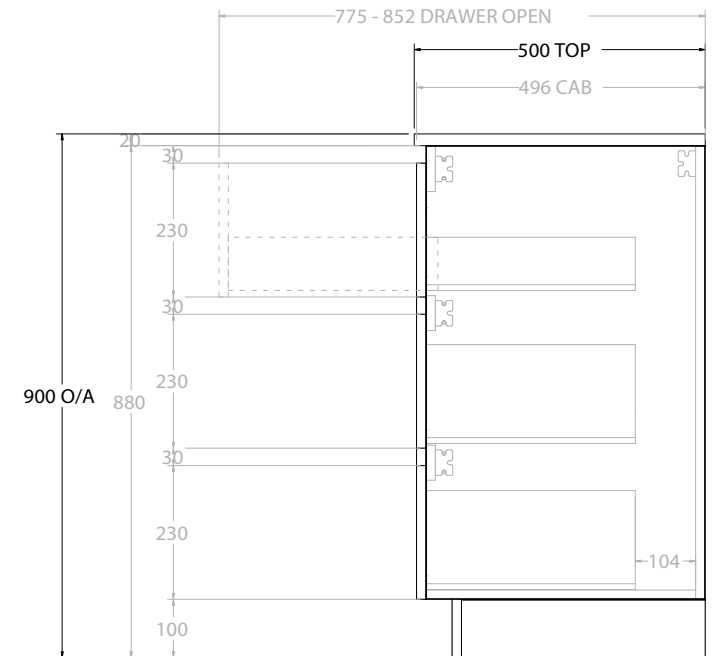
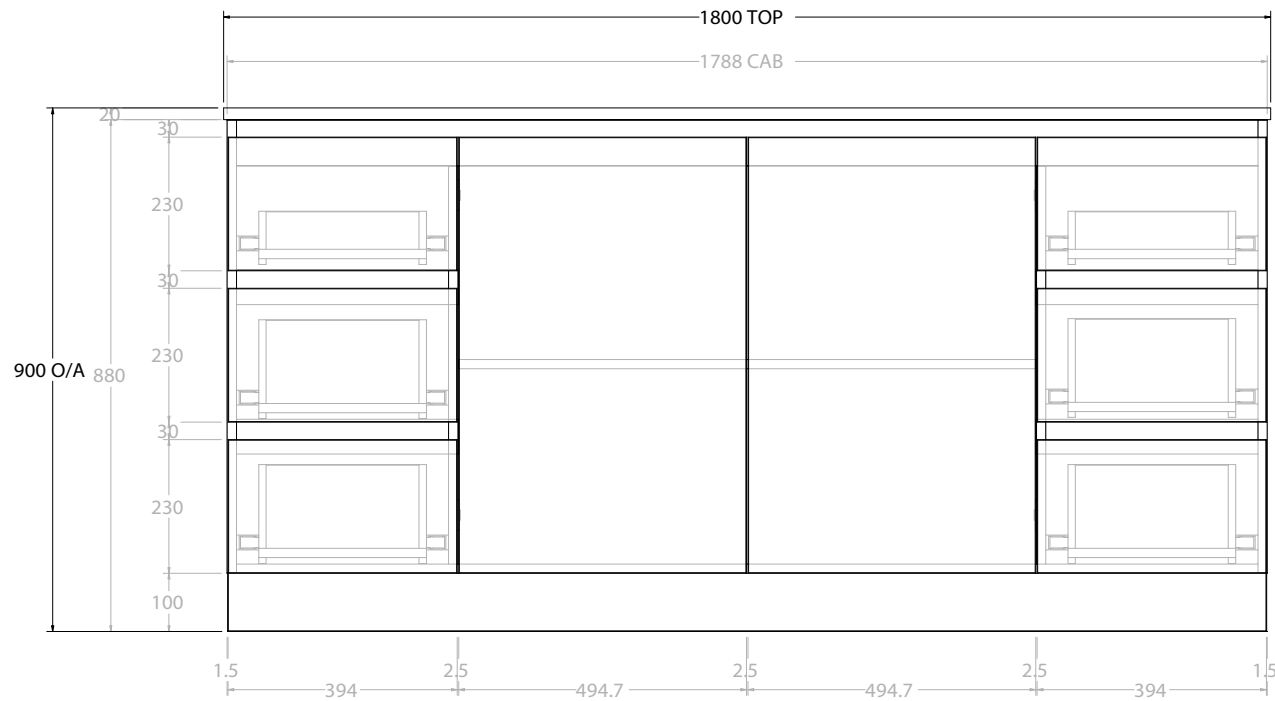
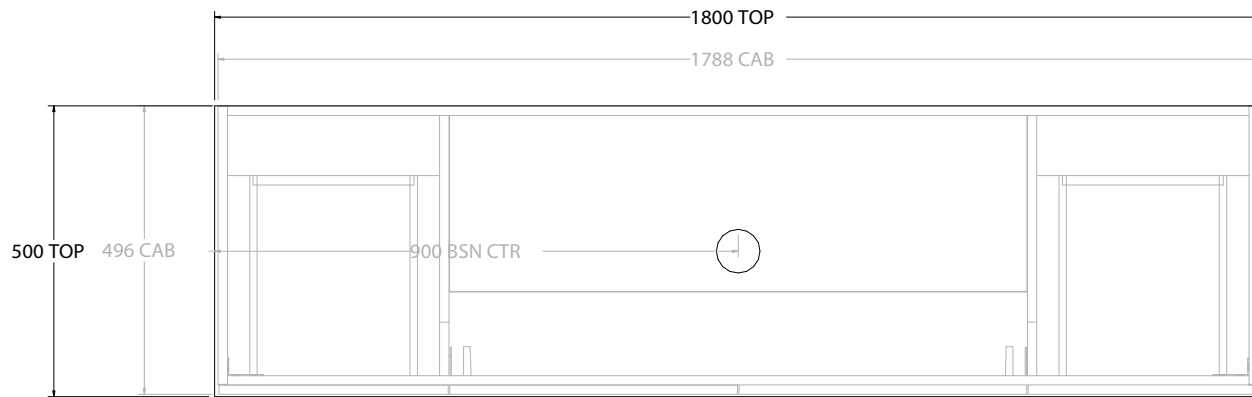
NOTES:
ALL DIMENSIONS ARE NOMINAL AND SUBJECT TO CHANGE.
DO NOT DRILL OR ROUGH IN UNTIL YOU HAVE RECEIVED AND MEASURED YOUR PRODUCT.
ALL DIMENSIONS ARE IN MILLIMETRES.
DO NOT MEASURE FROM DRAWING.



PRODUCT:	GLACIER DOOR & DRAWER TRIO 1500 FLOOR MOUNT OFFSET BASIN	
CODE:	LITE: GLLFCT1500WKL*	PRO: GLPFCT1500WKL*
MOUNTING:	FLOOR MOUNT	
SIZE:	1500W X 500D X 900H	
CONFIGURATION:	DOOR & DRAWER	
VERSION:	01	DATE: 08/17/22

TOP:	BENCHTOP
BASIN POSITION:	OFFSET BASIN
FOR TOP OPTIONS PLEASE ADD ONE OF THE FOLLOWING TO THE END OF PRODUCT CODE:	
CHERRY PIE = CP	
FRIDAY = FR	
CAESARSTONE = CS	

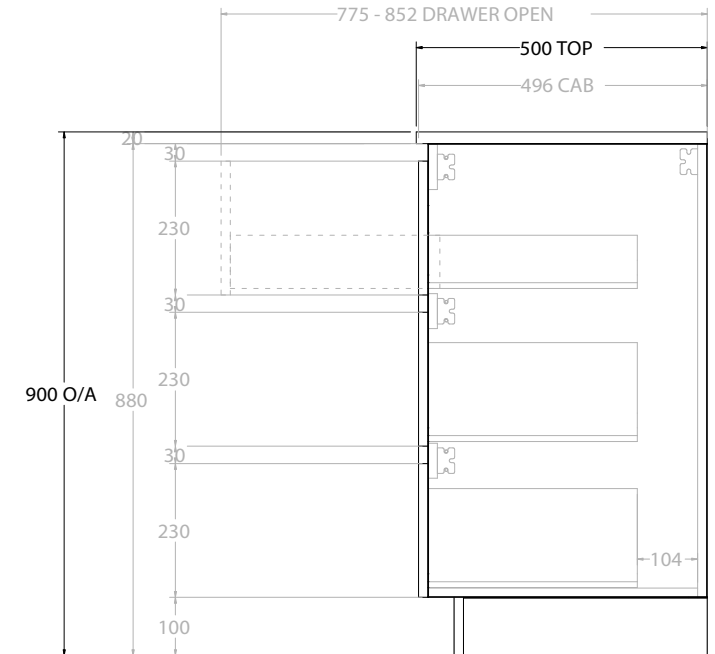
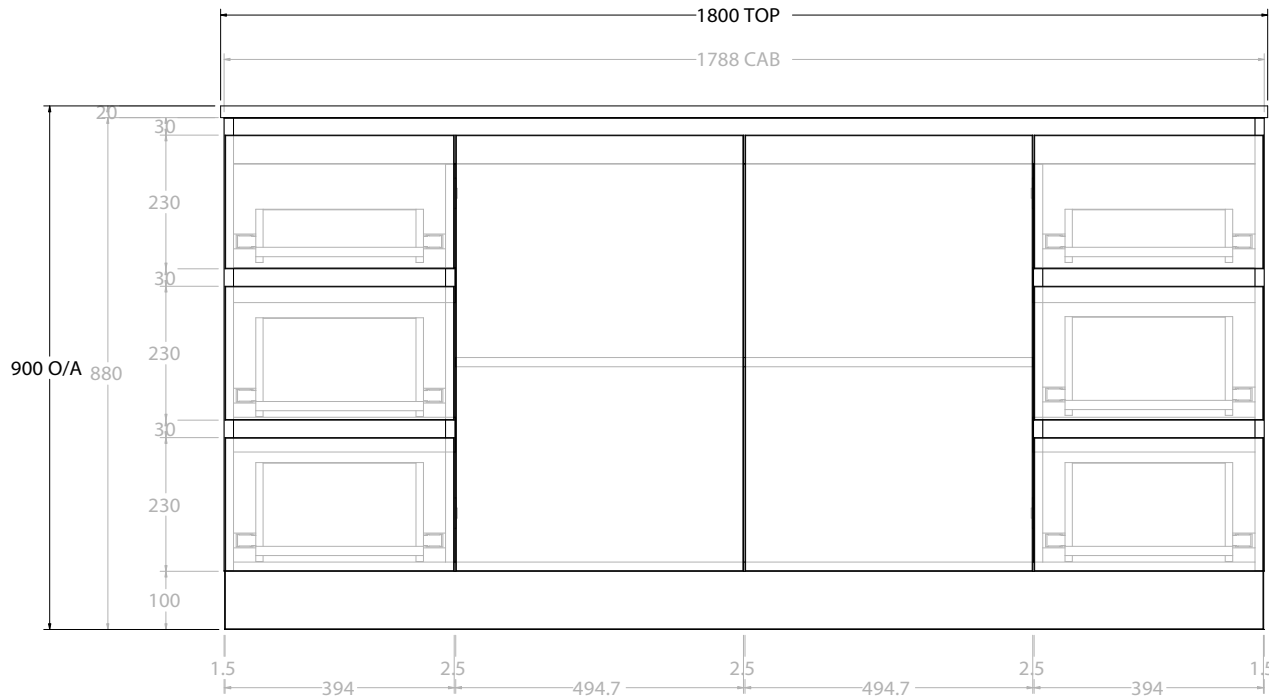
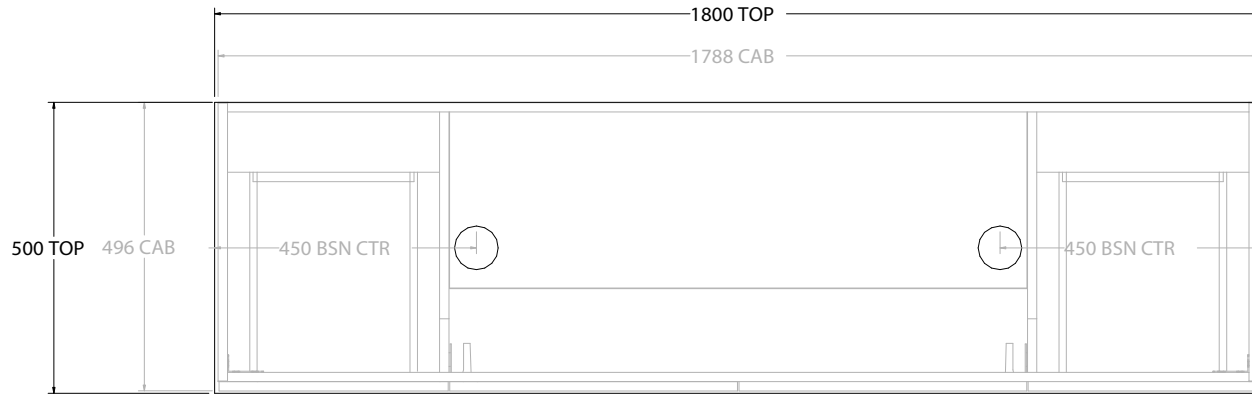
NOTES:
ALL DIMENSIONS ARE NOMINAL AND SUBJECT TO CHANGE.
DO NOT DRILL OR ROUGH IN UNTIL YOU HAVE RECEIVED AND MEASURED YOUR PRODUCT.
ALL DIMENSIONS ARE IN MILLIMETRES.
DO NOT MEASURE FROM DRAWING.
*LEFT HAND OFFSET PICTURED, RIGHT HAND OFFSET IS SAME BUT MIRRORED (REPLACE CODE SUFFIX L, WITH R)



PRODUCT:	GLACIER DOOR & DRAWER TRIO 1800 FLOOR MOUNT CENTRE BASIN	
CODE:	LITE: GLLFCT1800WKC	PRO: GLPFCT1800WKC
MOUNTING:	FLOOR MOUNT	
SIZE:	1800W X 500D X 900H	
CONFIGURATION:	DOOR & DRAWER	
VERSION:	01	DATE: 08/17/22

TOP:	BENCHTOP
BASIN POSITION:	CENTRE BASIN
FOR TOP OPTIONS PLEASE ADD ONE OF THE FOLLOWING TO THE END OF PRODUCT CODE:	
	CHERRY PIE = CP
	FRIDAY = FR
	CAESARSTONE = CS

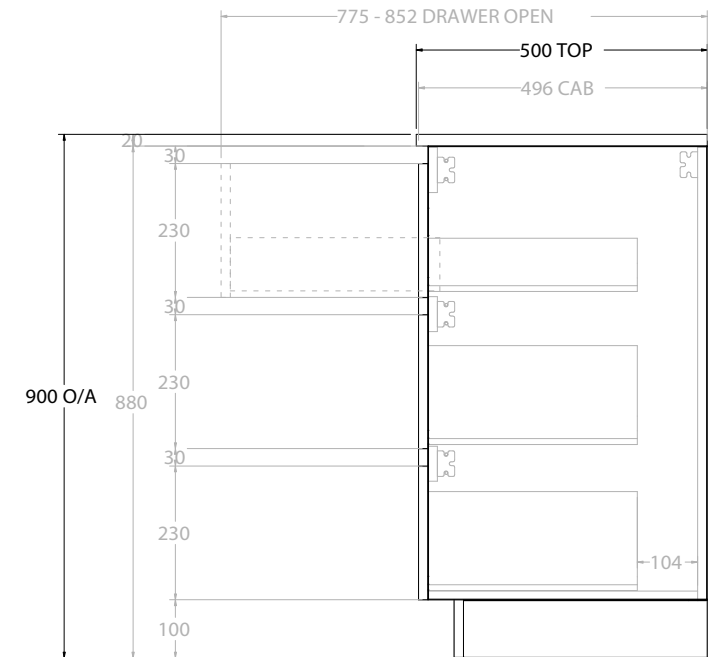
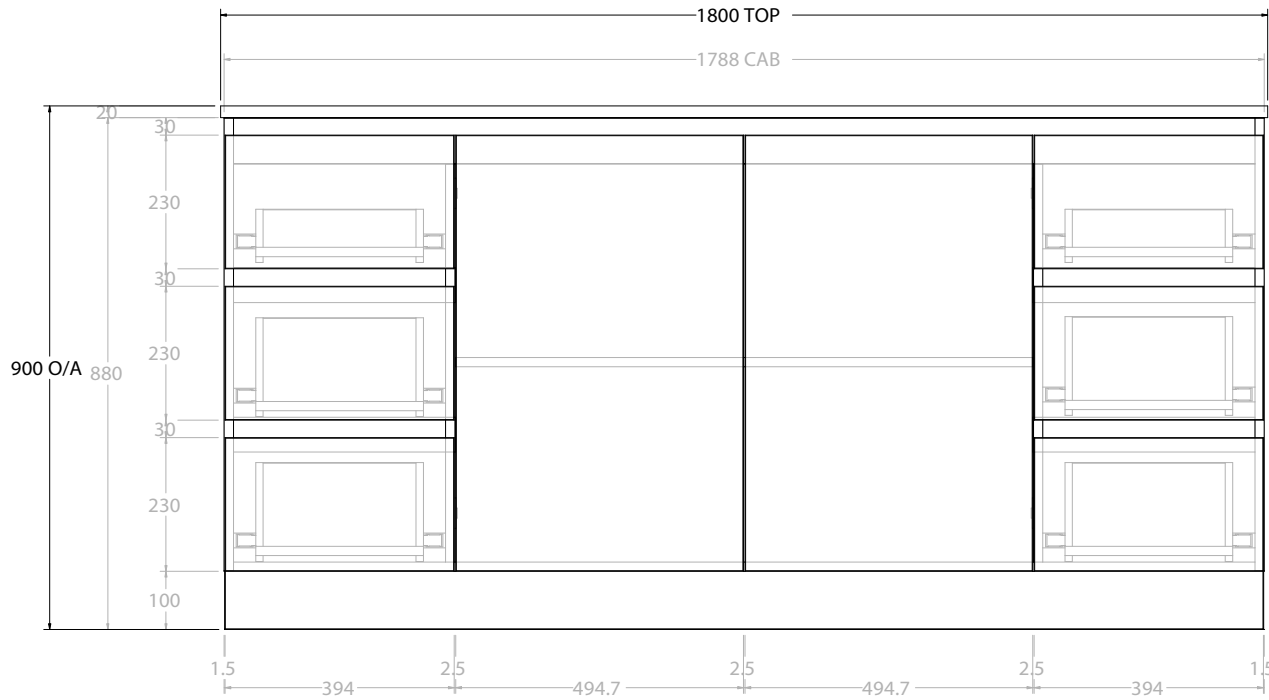
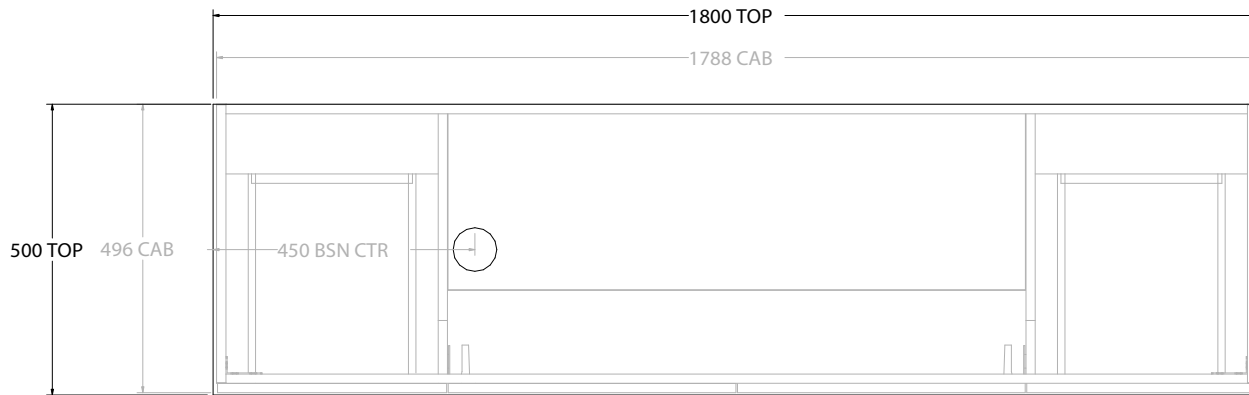
NOTES:
ALL DIMENSIONS ARE NOMINAL AND SUBJECT TO CHANGE.
DO NOT DRILL OR ROUGH IN UNTIL YOU HAVE RECEIVED AND MEASURED YOUR PRODUCT.
ALL DIMENSIONS ARE IN MILLIMETRES.
DO NOT MEASURE FROM DRAWING.



PRODUCT:	GLACIER DOOR & DRAWER TRIO 1800 FLOOR MOUNT DOUBLE BASIN	
CODE:	LITE: GLLFCT1800WKD	PRO: GLPFCT1800WKD
MOUNTING:	FLOOR MOUNT	
SIZE:	1800W X 500D X 900H	
CONFIGURATION:	DOOR & DRAWER	
VERSION:	01	DATE: 08/17/22

TOP:	BENCHTOP
BASIN POSITION:	DOUBLE BASIN
FOR TOP OPTIONS PLEASE ADD ONE OF THE FOLLOWING TO THE END OF PRODUCT CODE:	
CHERRY PIE = CP	
FRIDAY = FR	
CAESARSTONE = CS	

NOTES:
ALL DIMENSIONS ARE NOMINAL AND SUBJECT TO CHANGE. DO NOT DRILL OR ROUGH IN UNTIL YOU HAVE RECEIVED AND MEASURED YOUR PRODUCT. ALL DIMENSIONS ARE IN MILLIMETRES. DO NOT MEASURE FROM DRAWING.



PRODUCT:	GLACIER DOOR & DRAWER TRIO 1800 FLOOR MOUNT OFFSET BASIN	
CODE:	LITE: GLLFCT1800WKL*	PRO: GLPFCT1800WKL*
MOUNTING:	FLOOR MOUNT	
SIZE:	1800W X 500D X 900H	
CONFIGURATION:	DOOR & DRAWER	
VERSION:	01	DATE: 08/17/22

TOP:	BENCHTOP
BASIN POSITION:	OFFSET BASIN
FOR TOP OPTIONS PLEASE ADD ONE OF THE FOLLOWING TO THE END OF PRODUCT CODE:	
CHERRY PIE = CP	
FRIDAY = FR	
CAESARSTONE = CS	

NOTES:
ALL DIMENSIONS ARE NOMINAL AND SUBJECT TO CHANGE.
DO NOT DRILL OR ROUGH IN UNTIL YOU HAVE RECEIVED AND MEASURED YOUR PRODUCT.
ALL DIMENSIONS ARE IN MILLIMETRES.
DO NOT MEASURE FROM DRAWING.
*LEFT HAND OFFSET PICTURED, RIGHT HAND OFFSET IS SAME BUT MIRRORED (REPLACE CODE SUFFIX L, WITH R)