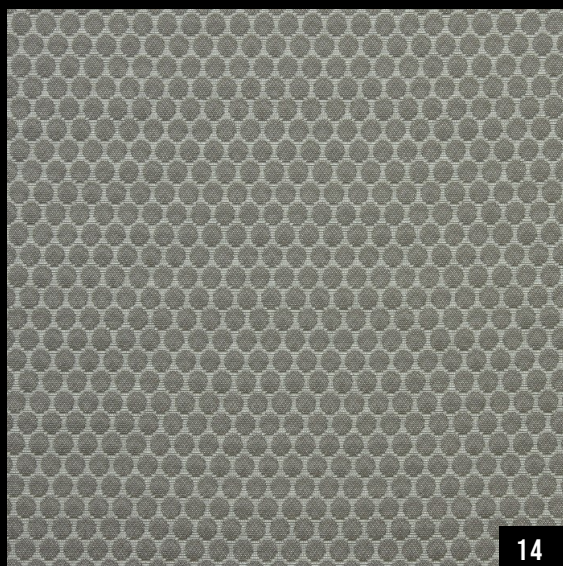
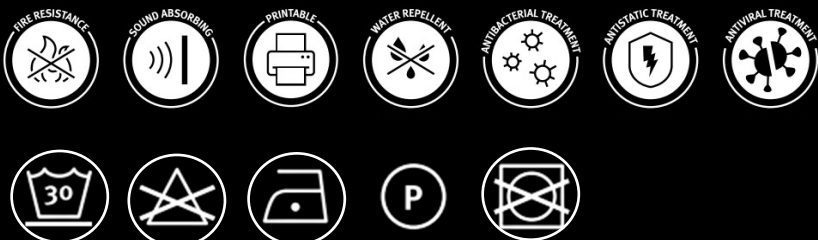


## FABRIC SPECIFICATION

### DOTS



### COMPOSITION

100% PES FR

### WIDTH

140 cm

### WEIGHT

420

### MARTINDALE (EN ISO 5470-2)

35.000

### FUZZING & PILLING TEST (UNI EN ISO 12945-2:02)

4

### FASTNESS TO LIGHT - XENOTEST (ISO 105-B02)

5/6

### COLOUR FASTNESS TO RUBBING (ISO 105 X12)

Dry: 4/5 Wet: 4/5

### FIRE RETARDANT

UNI 9175 Classe 1IM

EN 1021-1

EN 1021-2

BS 5852-1 cigarette test

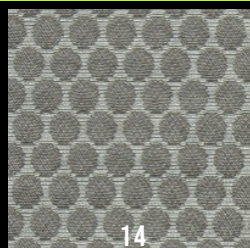
BS 5852-1 match test

BS 5852 crib 5

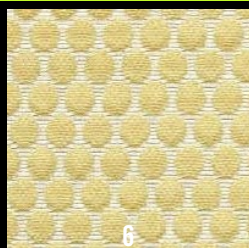
DIN 4102 B1

NF P 92 503-507 M1

IMO FTP CODE 2010



14



6



3



7



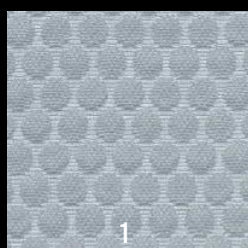
9



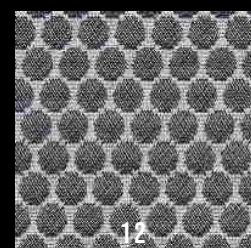
11



8



1



12

