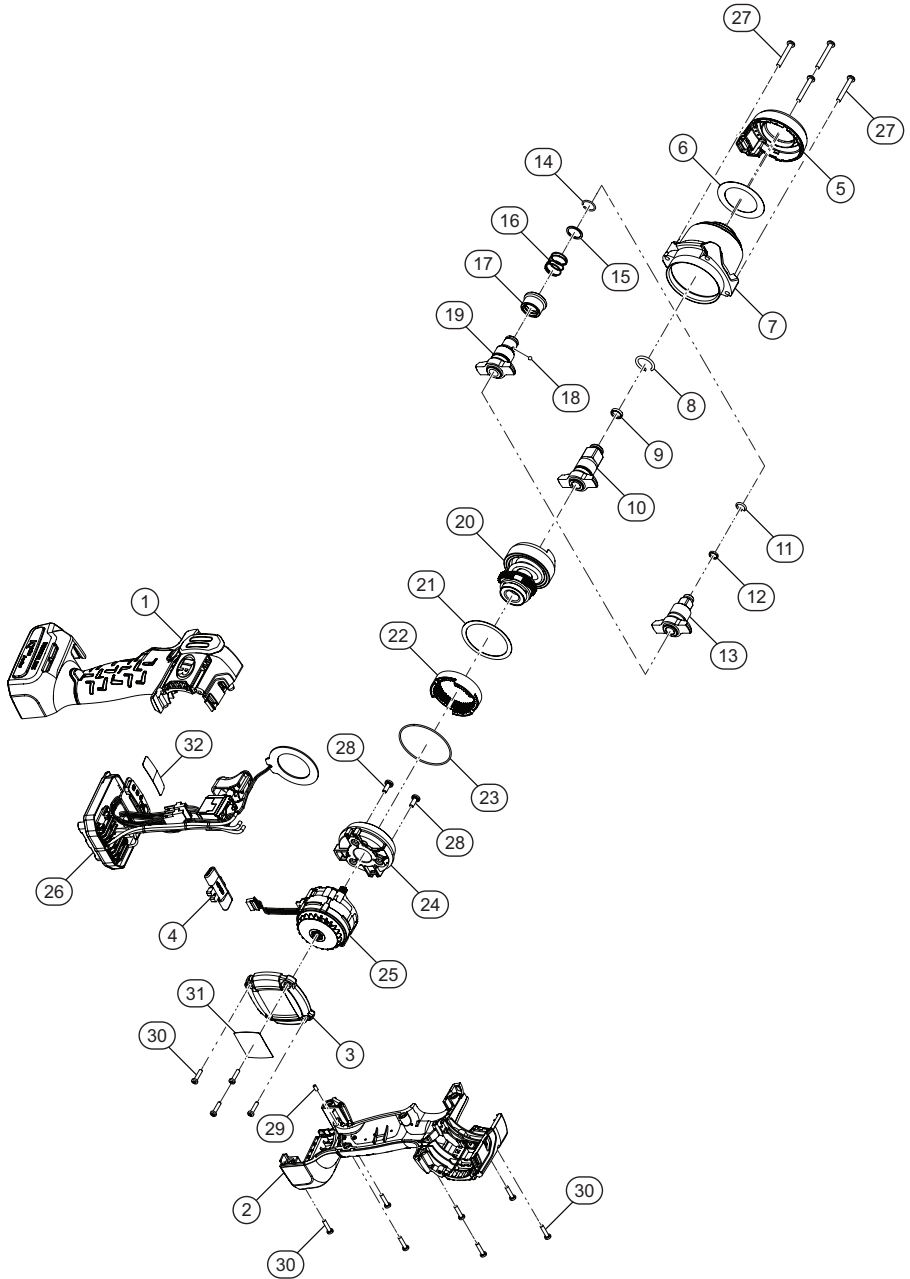


W3001 Series: W3111, W3131 and W3151, Cordless Impact Wrench - Exploded View



(Dwg. TL-W3001-PLM_1)



TL-W3001-PLM
Edition 1
October 2022

W3001 Series: W3111, W3131 and W3151, Cordless Impact Wrench - Parts List

Item	Part Description	Part Number (CCN)	Item	Part Description	Part Number (CCN)
	Housing Kit	TK-W3001-040		Impact Mechanism and Gearing Kit	TK-W3001-675
1	Left Housing	---	20	Impact Mechanism Assembly	---
2	Right Housing	---	21	Gear Case Washer	---
3	Back Cap (includes Warning Label)	---	22	Ring Gear	---
27	Hammer Case Screws (set of 4)	---	23	Gear Case O-Ring	---
29	Pin	---		Motor Kit	TK-W3001-054
30	Back Cap/Housing Screws (set of 11)	---	28	Gear Case Cover Screws (set of 3)	---
	LED Kit	TK-W3001-KLED	24	Gear Case Cover	---
5	LED Assembly	---	25	Motor	---
6	Insulating Washer	---	26	Trigger and Electronics Kit	TK-W3001-093
	Hammer Case and LED Kit	TK-W3001-727	6	LED Assembly	---
5	LED Assembly	---		Insulating Washer	---
6	Insulating Washer	---		Service Kit	TK-W3001-SK
7	Hamer Case & Bushing Assembly	---	4	Forward/Reverse Actuator	---
*	Hammer Case Seal	---	*	Hammer Case Seal	---
27	Hammer Case Screws (set of 4)	---	27	Hammer Case Screws (set of 4)	---
	Socket Retainer Kit for W3151, 1/2" Square Drive	2125QT1-K425 (80107733)	28	Gear Case Cover Screws (set of 3)	---
8	Socket Retainer	---	29	Pin	---
9	O-Ring	---	30	Back Cap/Housing Screws (set of 11)	---
	Socket Retainer Kit for W3131, 3/8" Square Drive	1702-K425 (47533407001)	31	Warning Label	---
11	Socket Retainer	---	32	Power Regulator Label	---
12	O-Ring	---		20V Li-Ion Battery Pack	
	Anvil Kit for W3151, 1/2" Square Drive	TK-W3151-626	*	2.5 Ah	BL2012 (47515903001)
8	Socket Retainer	---		2.8 Ah	BL2013
9	O-Ring	---		5.0 Ah	BL2022 (47515902001)
10	1/2" Square Drive Anvil	---		5.6 Ah	BL2023
	Anvil Kit for W3131, 3/8" Square Drive	TK-W3131-626		Battery Charger	
11	Socket Retainer	---	*	Battery Charger, Single Bay	BC1121 (47507879001)
12	O-Ring	---		Battery Charger, Dual Bay	BC1221
13	3/8" Square Drive Anvil	---		Protective Battery Boot	
	Anvil Kit for W3111, 1/4" Hex Quick Change	TK-W3111-926	*	For 2.5 Ah & 2.8 Ah Batteries	BL2005-BOOT (47510965001)
14	Snap Ring	---		For 5.0 Ah & 5.6 Ah Batteries	BL2010-BOOT (47510964001)
15	Washer	---		Grease	
16	Spring	---	*	IR # 105 (4 oz. tube) for Impact Mechanism and Anvil	105-4T (04616116)
17	Bit Sleeve	---		IR # 105 (1 lb can) for Impact Mechanism and Anvil	105-1LB (04279147)
18	Ball	---		IR # 67 (4 oz. tube) for Gearing	67-4T (04637336)
19	1/4" Hex Anvil	---		IR # 67 (1 lb can) for Gearing	67-1LB (03773009)
			*	Grease Gun	R000A2-228 (03095015)
			*	Storage/Carrying Bag	TB4 (47543666001)

* Indicates not illustrated.

Parts and Maintenance

When tool life has expired, it is recommended that the tool be disassembled, degreased and parts separated by material for proper recycling.

Tool repair and maintenance should only be carried out by an Authorized Service Center.

Refer all communications to the nearest **Ingersoll Rand** office or distributor.

Related Documentation

Manuals can be downloaded from ingersollrand.com

For additional information, refer to:

Product Safety Information Manual 04581146

Product Information Manual TL-W3001-PIM

Declaration of Conformity TL-W3001-DOC

