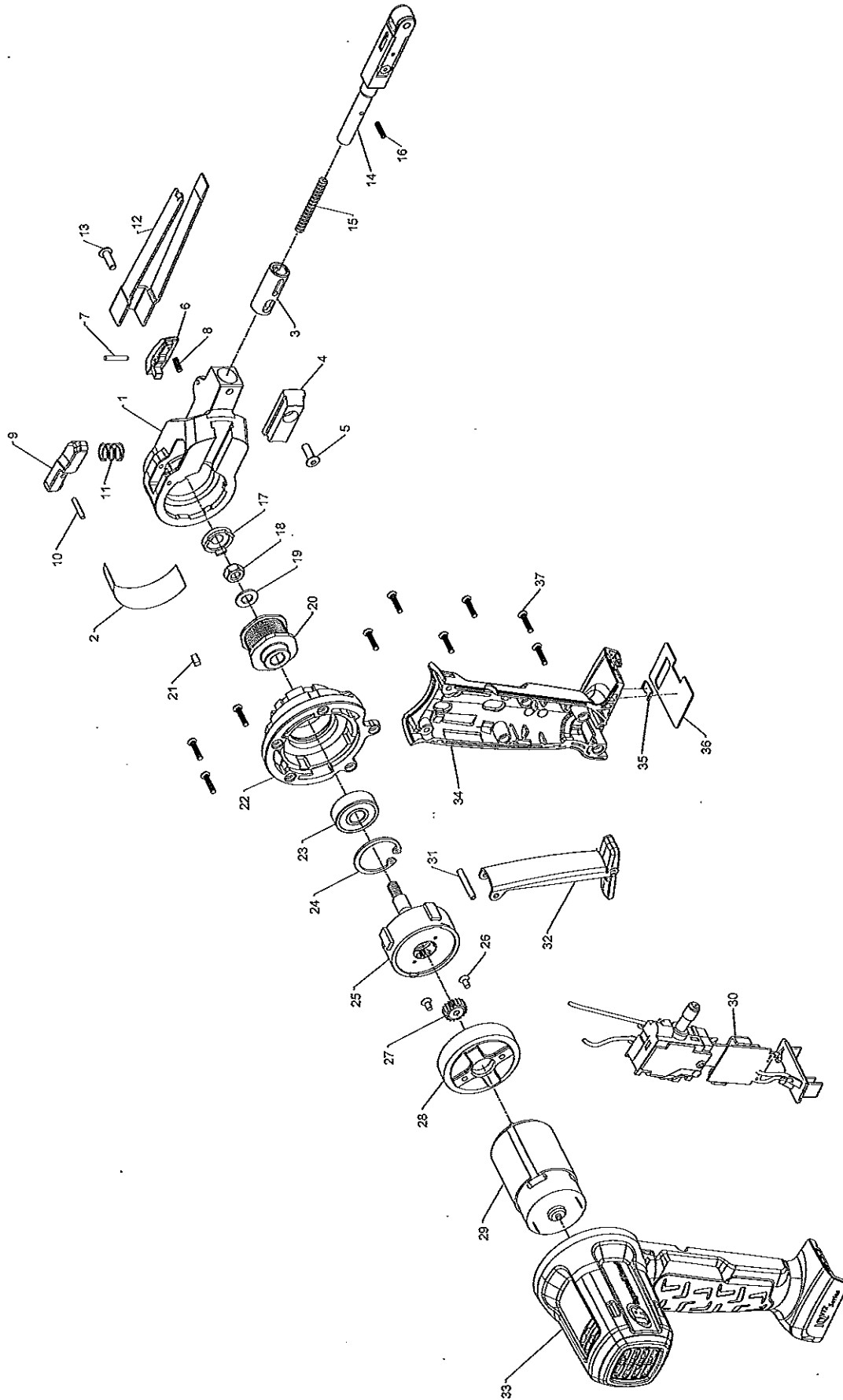


# G1811 Series Cordless Belt Sander - Exploded View



(Dwg. 47559162001)



47569581001  
Edition 2  
October 2016

## G1811 Series Cordless Belt Sander - Parts List

Item	Part Description	Part Number	(CCN)
*	Belt Housing Kit	G1811-K300	(47570537001)
1	Belt Housing	---	---
2	Warning Label	---	---
3	Sleeve, Belt Housing	---	---
4	Key, Belt Housing	---	---
5	Screw, Belt Housing	---	---
6	Button, Belt Change	---	---
7	Pin, Belt Change	---	---
8	Spring, Belt Change	---	---
9	Button, Belt Arm	---	---
10	Pin, Belt Arm	---	---
11	Spring, Belt Arm	---	---
*	Belt Housing Key Kit	G1811-K307	(47592305001)
4	Key, Belt housing	---	---
5	Screw, Belt Housing	---	---
*	Belt Change Button Kit	G1811-K556	(47590385001)
6	Button, Belt Change	---	---
7	Pin, Belt Change	---	---
8	Spring, Belt Change	---	---
*	Belt Arm Button Kit	G1811-K249	(47582305001)
9	Button, Belt Arm	---	---
10	Pin, Belt Arm	---	---
11	Spring, Belt Arm	---	---
*	Belt Support Kit	G1811-K307	(47570722001)
12	Belt Support	---	---
13	Screw, Belt Support	---	---
*	Belt Arm Kit	G1811-K555	(47552066001)
14	Belt Arm Assembly	---	---
15	Spring, Belt Tension	---	---
16	Screw, Belt Arm	---	---
*	Drive Wheel Kit	G1811-K691	(47570538001)
17	Cap, Drive Wheel	---	---
18	Nut, Drive Wheel	---	---
19	Washer, Drive Wheel	---	---
20	Drive Wheel	---	---
21	Key, Drive Wheel	---	---

\* Indicates Not Illustrated.

Item	Part Description	Part Number	(CCN)
*	Gear Case Kit	G1811-K580	(47570539001)
22	Gear Case	---	---
23	Bearing	---	---
24	Snap Ring	---	---
37	Screw, Housing (9 Required)	---	---
25	Gear Box Assembly Kit	G1811-K750	(47570540001)
*	Electric Motor Kit	G1811-K54	(47570541001)
26	Screw, Motor Adapter Plate (2 Required)	---	---
27	Pinion	---	---
28	Adapter Plate	---	---
29	Motor	---	---
30	Switch-PCB-Battery Connector	G1811-K93	(47570542001)
*	Lever Actuator Kit	G1811-K400	(47570543001)
31	Pin, Lever	---	---
32	Lever Actuator	---	---
*	Housing Kit	G1811-K40	(47570544001)
33	Right Housing	---	---
34	Left Housing	---	---
35	Clip	---	---
36	Information Label	---	---
37	Screw, Housing (9 Required)	---	---
*	Fastener Kit	G1811-K105	(47590460001)
37	Screw, Housing (9 Required)	---	---
*	Label Kit	G1811-K99	(47570545001)
2	Warning Label	---	---
36	Information Label	---	---
*	12V Li-ion Battery Pack	BL1203	(24206179)
*	Battery Charger	BC1121	(47507879001)
*	Sanding Belt Kit	G1811-KIT -BELT	(47578387001)

### Parts and Maintenance

When tool life has expired, it is recommended that the tool be disassembled, degreased and parts separated by material for proper recycling.

Tool repair and maintenance should only be carried out by an authorized Service Center.

Refer all communications to the nearest Ingersoll Rand office or distributor.

### Related Documentation

Manuals can be downloaded from [ingersollrandproducts.com](http://ingersollrandproducts.com)

For additional information, refer to:

Product Safety Information Manual 47542671001.

Product Information Manual 47569580001.

