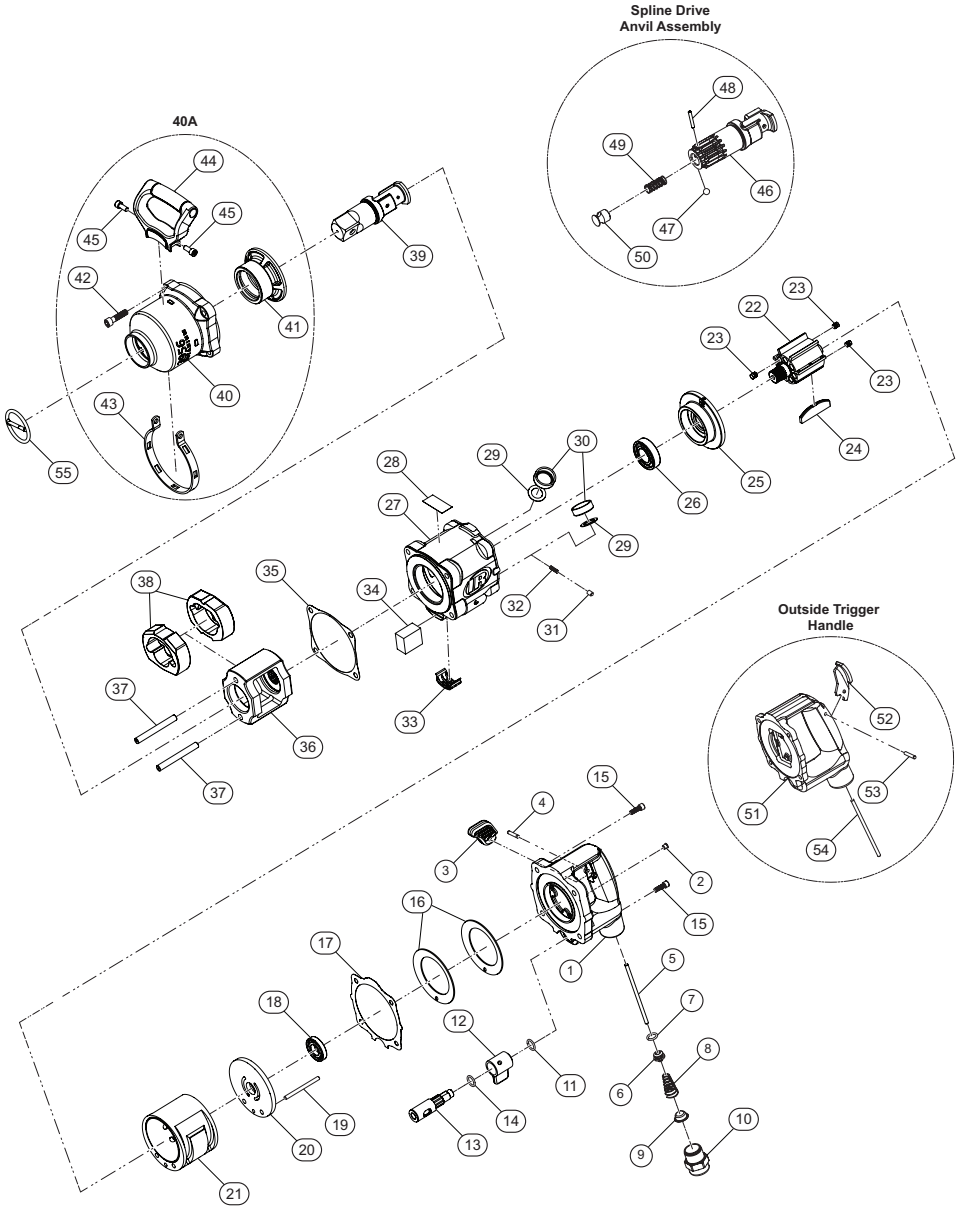


3956 Series, Air Impact Wrench - Exploded View



(Dwg. TL-3956-PLM-1)



3956 Series, Air Impact Wrench - Parts List

Item	Part Description	Part Number	Item	Part Description	Part Number	
1	Inside Trigger Handle Assembly	TD-3956-K92	† 34	Exhaust Silencer	3940P-311	
2	Grease Fitting	131-188	† 35	Hammer Case Gasket	3955-36	
3	Trigger	TP-2955-93RD	36	Hammer Frame Assembly	2950-A703	
4	Trigger Pin	280-265	37	Hammer Pin (2 required)	2950-704	
5	Throttle Valve Plunger	3955-302	38	Hammer (2 required)	TP-2955-724	
6	Throttle Valve Assembly	2934-A50	39	1-1/2" Square Drive Anvil, Standard Length	2950-726	
† # 7	Throttle Valve Seal	2934-159	40A	Hammer Case Assembly Kit		
† 8	Throttle Valve Spring	834-51-5		for 3956A2Ti, 3956B1Ti and 3956B2Ti	TK-3956TI-727	
† # 9	Air Strainer Screen	434-61		for 3956B2TIEX	TK-3956TIEX-727	
10	Straight Inlet	845-565	40	Hammer Case Assembly		
† #11	Reverse Valve Seal	R00BR-210		for 3956A2Ti, 3956B1Ti and 3956B2Ti	TD-3956TI-727	
12	Reverse Lever	TP-2955-75RD		for 3956B2TIEX	TD-3956TIEX-727	
13	Reverse Valve	3955-329	41	Hammer Case Bushing		
† #14	Reverse Valve Bushing Seal	85H-167		for 3956A2Ti, 3956B1Ti and 3956B2Ti	TP-3955-641	
15	Handle Cap Screw (4 required)	3955-638		for 3956B2TIEX	TP-3956EX-641	
16	Motor Clamp Washer (2 required)	MR-207	42	Hammer Case Cap Screw (4 required)	3955-105	
† #17	Handle Gasket	3955-283	43	Strap, Aux Handle	TP-3956TI-364	
† 18	Rear Rotor Bearing	834-24	44	Handle, Auxiliary	TP-3956TI-048	
19	Cylinder Dowel	2950-98	45	Cap Screw (2 required)	2850-49	
20	Rear End Plate	2950-12	46	Spline Drive Anvil Assembly	VW-1030	
21	Cylinder	2950-3	† 47	Socket Retaining Ball	D04-280	
22	Rotor Assembly	TD-3956TI-53	† 48	Plunger Retaining Pin	845-128	
23	Plug, Rotor (14 required)	2850-229	† 49	Retaining Plunger Spring	2940-231-5	
† #24	Vane Packet (set of 7)	TK-2955-042-7	50	Retaining Ball Plunger	845-230	
25	Front End Plate	3955-11	51	Outside Trigger Handle Assembly (includes 2, 6, 7, 8, 9, 10, 11, 52, 53, and 54)	3955-A1	
† 26	Front Rotor Bearing	TA-22A		52	Trigger	TP-3956TI-78
27	Motor Housing Assembly	TD-3956TI-40		53	Trigger Pin	280-265
28	Warning Label for Impacttools	WARNING-2-99	54	Throttle Valve Plunger	3955-302	
† 29	Air Port Gasket Retainer (2 required)	2940-200	55	Socket Retainer	RR10020S	
† #30	Air Port Gasket (2 required)	R44H-210A	*	Grease Gun	R000A2-228	
*	ATEX Spec Label	ATEX-301A	*	Tune-up Kit (includes 7, 8, 9, 11, 14, 17, 18, 24, 26, 29[2], 30[2], 31, 32, 34, 35, 47, 48, and 49)	TK-3956-GTK	
† 31	Reverse Lock Plunger	4U-663B				
† 32	Reverse Lock Plunger Spring	4U-664-10				
33	Exhaust Deflector	3940-123				

* Indicates not illustrated.

† Indicates Tune-up Kit part.

‡ Indicates common-wear parts. Maintain stock to reduce downtime.

Parts and Maintenance

When tool life has expired, it is recommended that the tool be disassembled, degreased and parts separated by material for proper recycling.

Tool repair and maintenance should only be carried out by an Authorized Service Center.

Refer all communications to the nearest **Ingersoll Rand** office or distributor.

Related Documentation

Manuals can be downloaded from ingersollrand.com

For additional information, refer to:

Product Safety Information Manual 04580916 and 47559151001 (ATEX)

Product Information Manual TL-3956-PIM

Product Maintenance Manual TL-3956-MIM

Declaration of Conformity TL-3956-DOC

