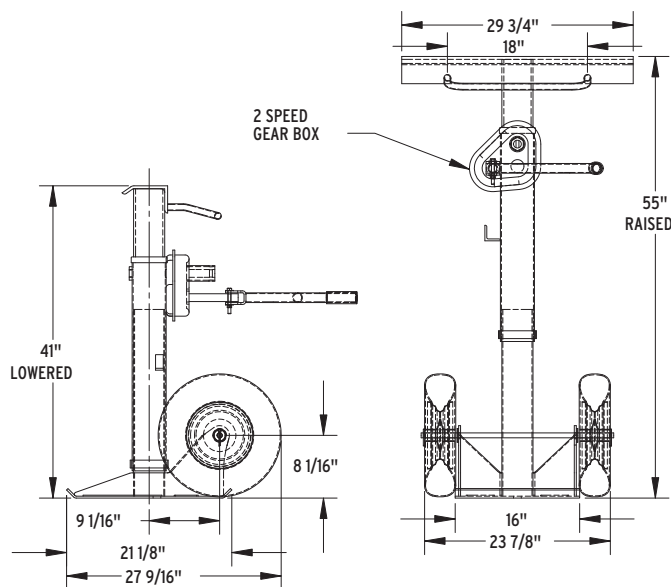


HAND CRANK TRAILER JACK

Trailer Stabilizing Jacks are used to prevent up-ending of semi-trailers when they are not connected to a tractor during loading and unloading operations. Also used to level trailers parked on sloped ground and to prevent landing gear from sinking into a soft surface. High strength steel construction. Flush-type zerk fitting for lubricating ACME screw. Meets OSHA regulations when used with wheel chocks. Yellow powder coat finish for added toughness. Includes reflective collar for visibility at night.



Models

CJ-BEAM-SN

16" Solid Foam Wheels

CJ-BEAM-PN

16" Fully Pneumatic

Features

- Static capacity: 100,000 lbs
- Overall length: 35 7/16"
- Overall width: 29 3/4"
- Overall length: 27 9/16"
- Service range: 41" to 55"
- Includes (2) 16" fully pneumatic wheels



**LOADING DOCK
WAREHOUSE**

740-917-5781 | sales@loadingdockwarehouse.com | loadingdockwarehouse.com