



MAVEN[®]

MAVEN S SERIES

Thank you for purchasing a Maven™ spotting scope. With this purchase you have told the world that quality and personality mean more to you than big-brand marketing. Included here are the instructions for getting your scope ready for your first adventure. If you have any questions, please contact us directly at: customerservice@mavenbuilt.com.

In the meantime, get out there and have some fun, then let us know all about your journey. We love hearing your stories as much as we love making great products. Keep us in the loop at: [Facebook.com/mavenbuilt](https://www.facebook.com/mavenbuilt) -or- Instagram: [@mavenbuilt](https://www.instagram.com/mavenbuilt)



PARTS OF THE SCOPE:

- A. Ocular lens eyepiece
- B. Twist-up, multiple-position eyecup
- C. Magnification wheel
- D. Focus wheel
- E. Objective lens
- F. Tripod adapter mount
- G. Tripod collar adjustment knob
- H. Aim assist groove/nock
- I. Objective lens shade



S.2 SCOPE



S.1 SCOPE

INSTRUCTIONS FOR USE

EYEPIECE

The Maven spotting scope eyepiece includes a variable zoom which allows for adjusting magnification. Adjust the magnification wheel so that the desired magnification lines up with the arrow along the top of the eyepiece.

S.1 Scope:

- Increase magnification: turn wheel counter-clockwise.
- Decrease magnification: turn wheel clockwise.

S.2 Scope:

- Increase magnification: turn wheel clockwise.
- Decrease magnification: turn wheel counter-clockwise.

EYE RELIEF ADJUSTMENT

The eyecup on your Maven spotting scope twists up so that any viewer can see the full field-of-view, with or without eyeglasses. For best viewing with eyeglasses, twist the eyecup all the way in (clockwise) until it stops. Depending on your facial structure or angle of viewing, you may twist the eyecup out (counter-clockwise) one or more clicks for optimal viewing.

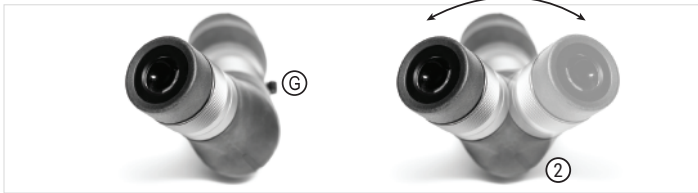
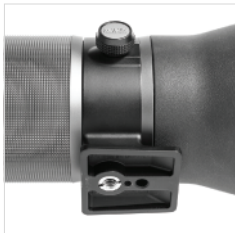


MOUNTING TO A TRIPOD

Mount your Maven spotting scope to a tripod or a vehicle window mount for stable viewing. Secure the tripod mount directly to a quick-release adapter plate of any camera tripod head that uses a standard $\frac{1}{4}$ " x 20 thread. S.1 Scope: If using a Manfrotto tripod head (plate model #200PL or similar), attach scope directly to tripod head; adapter plate is not necessary.

To change the viewing angle on angled scope:

1. Turn the tripod collar adjustment knob (G) counter-clockwise to disengage from the locked position.
2. Rotate the scope to the desired position (2).
3. Turn the adjustment knob (G) clockwise to re-engage the locked position (Note: take care not to overtighten).



AIMING

S.1 Scope: to assist in locating your target object, use the aim assist groove/nock located on the objective lens shade.

1. Adjust the magnification wheel to its lowest setting.
2. Align the aim assist groove/nock toward your target.



FOCUSING

1. Set the magnification to the desired power.
2. Turn the focus wheel until the object comes into focus.
 - turn the focus wheel clockwise for near objects.
 - turn the focus wheel counter-clockwise for distant objects.



Note: refined focusing is necessary after altering initial magnification.

LENS SHADE

Maven S.1 spotting scopes come with an integrated objective lens shade to guard against disruptive light and/or precipitation. To use, extend the lens shade out to desired position.

Note: the objective lens cap can be used while the lens shade is extended.



CARING FOR YOUR SCOPE:

To maintain maximum performance of your Maven spotting scope, keep the lenses free of dirt, dust, and grit. Protect the lenses with a case or the included lens covers. It is best to store your scope in its carry bag (S.1) or neoprene case (S.2) when not in use.

CLEANING

The eyecup can be removed and rinsed with clean water.

1. Hold the eyecup and twist counter clockwise until the eyecup is removed from the scope frame.
2. Rinse with water.

To clean the lenses:

1. Remove as much dust and dirt as possible from the lenses with a blower or bristle brush similar to the one included in our Lens Cleaning Kit. Canned air is not recommended.
2. Clean lenses of smudges or oil by using a small amount of liquid (fogging with your own breath or using optical cleaning fluid) and a micro-fiber lens cloth. The Maven spotting scope storage bag makes a good cleaning cloth. Ensure that the cloth is free from dirt and grit so as to not scratch the lenses. **NEVER** use a t-shirt, facial tissue or heavy cotton cloth on your lenses as they can scratch the lenses.

See our entire channel of how-to videos at youtube.com/c/Mavenbuilt

CAUTION

Spotting scopes should not be used to look at the sun or any other bright light - this can permanently damage your eyes.



*Scan code to view our **How To Maven** playlist. Click "How to Clean Optics" for a video on cleaning optics.*



UNCONDITIONAL LIFETIME WARRANTY

Maven optics are made with a commitment to you, our customer. All Maven optics come with an unconditional lifetime warranty*. If your optic becomes damaged or is at all defective contact us immediately for repair or replacement. We don't care where or when you bought it or if it was your fault or not – if it says Maven, we will take care of it.

*Warranty does not cover loss, deliberate damage, or cosmetic damage that does not hinder product performance.

Call us at 800-307-1109 or email us at: customerservice@mavenbuilt.com with any questions.

For warranty/service repairs please visit: mavenbuilt.com/warrantyreturns.

To ensure the fastest and easiest processing of any warranty return, please register your Maven optic. Jump on mavenbuilt.com/warranty-registration to get registered quickly and easily.









MAVEN[®]

M A V E N B U I L T . C O M

800-307-1109 / 1042 Pronghorn Dr. Lander, WY 82520

V.6