

FITZPATRICK SKIN TYPES & Pigment Choice Chart



FITZPATRICK SKIN TYPE 1

Fair skin with freckles, red/ginger or blonde eyelashes, brows and hair.

Pigments for Lips

Ginger, Nude, Lollipop, Cranberry, Warm Caramel, Brownie Pink and all possible color combos with them

Colors for Brows

Blonde hair: Rubia, Hazelnut, Native

Ginger hair: Native, Hazelnut



FITZPATRICK SKIN TYPE 2

Pale, fair skin tone. Blue or grey eyes, light or dark blonde hair.

Pigments for Lips

Brownie Pink, Lollipop, Ginger, Marshmallow, Nude, Cherry Blossom, Cranberry, Raspberry, Warm Caramel

Colors for Brows

warm toned hair: Native, Hazelnut, Coco

neutral toned hair: Hazelnut, Coco, Rubia

ashy hair: Rubia, Coco



FITZPATRICK SKIN TYPE 3

From fair to more tan, with yellow/golden undertones. Warm brown hair, dark blonde hair. Grey, green or brown eyes.

Pigments for Lips

Cranberry, Brownie Pink, Warm Caramel, Nude, Cherry Blossom, Dark Strawberry, Raspberry, Lollipop, Marshmallow

Colors for Brows

cool toned hair: Morena, Hazelnut, Coco

warm tones hair: Morena, Native



FITZPATRICK SKIN TYPE 4

Olive or tan brown skin tones. Hazel, brown and dark brown eyes. Dark brown hair.

Pigments for Lips

Dark Strawberry, Cranberry, Marshmallow, Cherry Blossom, Raspberry, Lollipop

Colors for Brows

for lighter skin/hair: Morena

for darker brown skin tones/hair: Morena + Rubia, Morena, Cafe + Rubia. (or just a couple drops of yellow corrector)



FITZPATRICK SKIN TYPE 5

Tan to dark brown skin tones. Dark brown to black eye and hair colors.

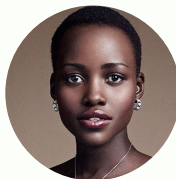
Pigment for Lips

Cranberry, Cherry Blossom, Marshmallow, Lollipop, Raspberry

Colors for Brows

for lighter skin/hair colors: Morena

for darker skin/hair colors: Morena, Morena + Rubia, Morena + Native, Cafe



FITZPATRICK SKIN TYPE 6

Very dark skin, that naturally has big amount of pigment. Black eyes and hair color.

Pigments for Lips

Lips are always cool & dark; if the case is workable, need to neutralize darkness as a first step, by using cherry blossom & cranberry.

If darkness is covered after a couple of passes during the first session - use Cranberry, Cherry Blossom, Marshmallow, Raspberry

Colors for Brows

Morena + Native, Morena + Rubia, Morena + Yellow corrector