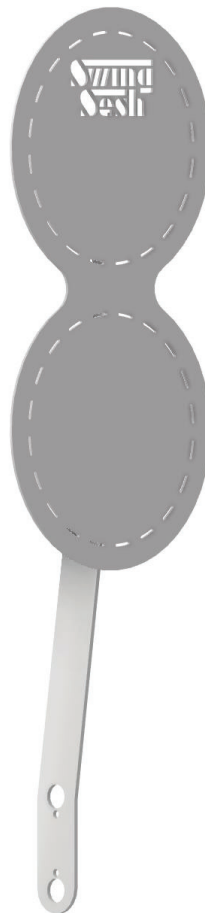


Installation & User Manual

Wall Ball Double Target



⚠ WARNING

Read all precautions and instructions in this manual before using this equipment. Save this manual for future reference and in the event that the manufacturer has to be contacted.

Contents


Determine Your Configuration 2
Assembly Instructions 4
 Tools Required 4
 Parts Identification 5
 Hardware 5
Limited Warranty & Return Policy 8


Replacement Parts or Questions

If you have questions after reading this manual, please call our Customer Care Team and our staff will provide assistance. If any parts or components arrive damaged, we will do our best to provide a repair kit or replacement parts as soon as possible.

Customer Care: 1-301-247-2881

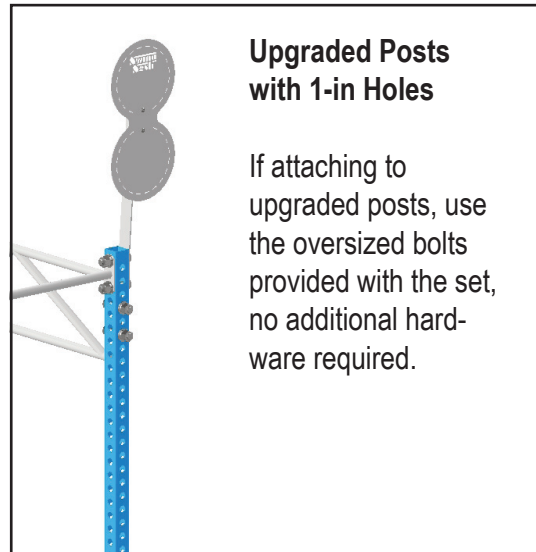
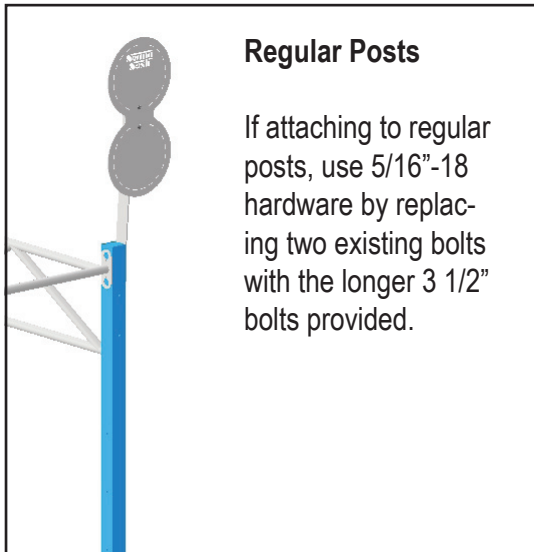
Please save this manual in the event that you need to contact SwingSesh.

 **WARNING**
Read this manual prior to assembling and using the equipment. Save this manual for future reference.

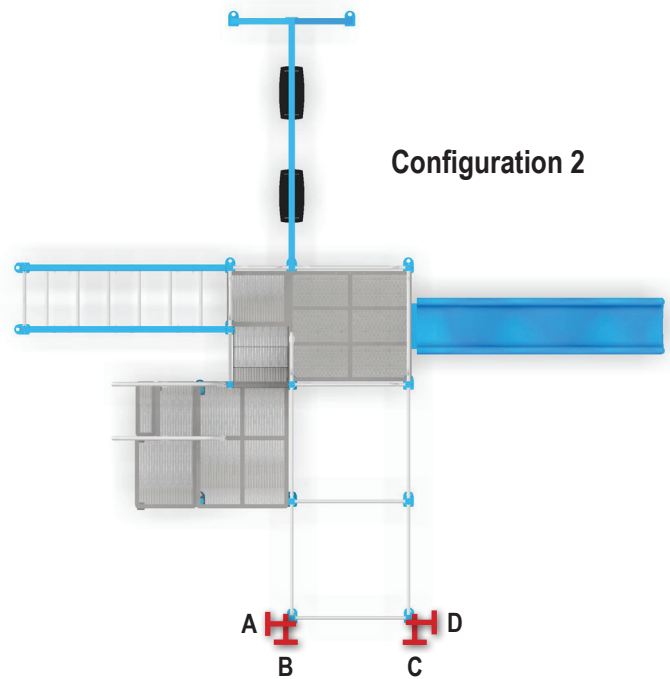
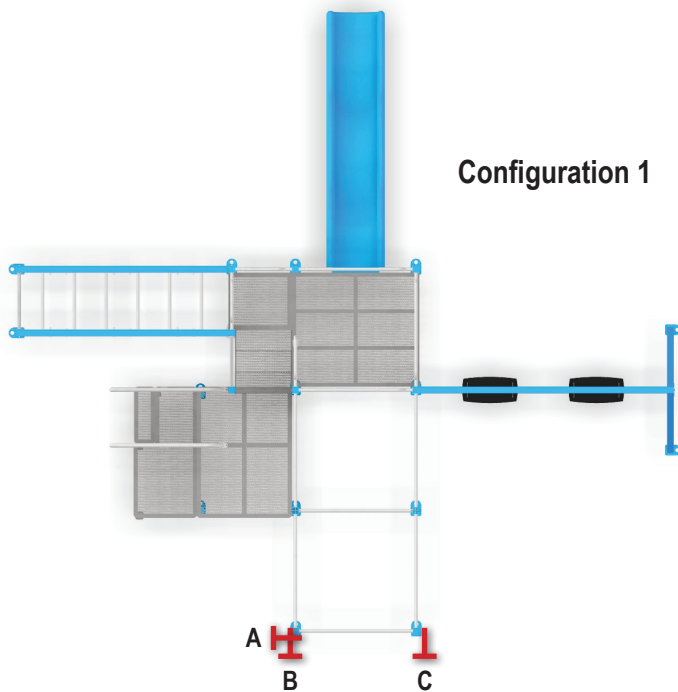
 **WARNING**
This product must be anchored.

Determine Your Configuration

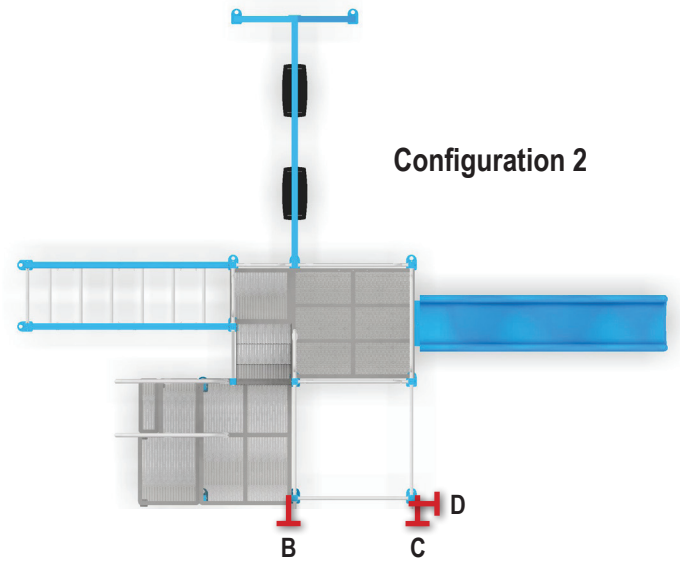
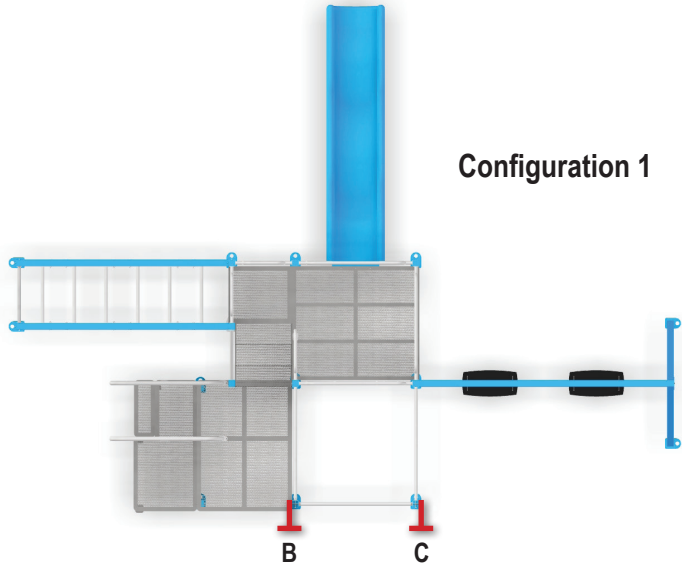
The Double Wall Ball Target can be mounted to the A3, A5, and AH Posts. Review the diagrams below for acceptable attachment locations for each model.



SuperSesh

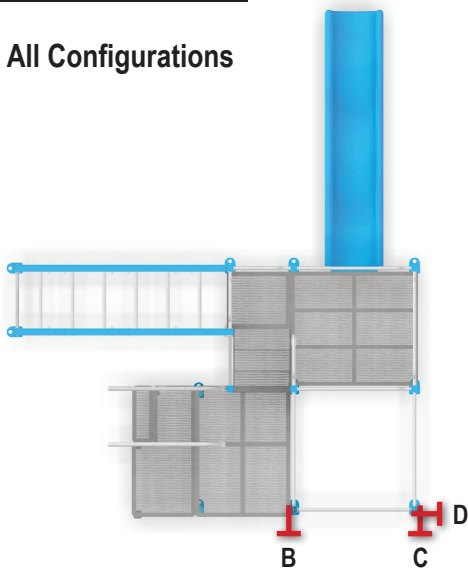


SwingSesh

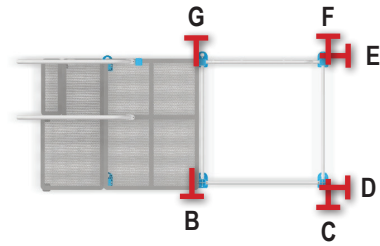


SlimSesh

All Configurations



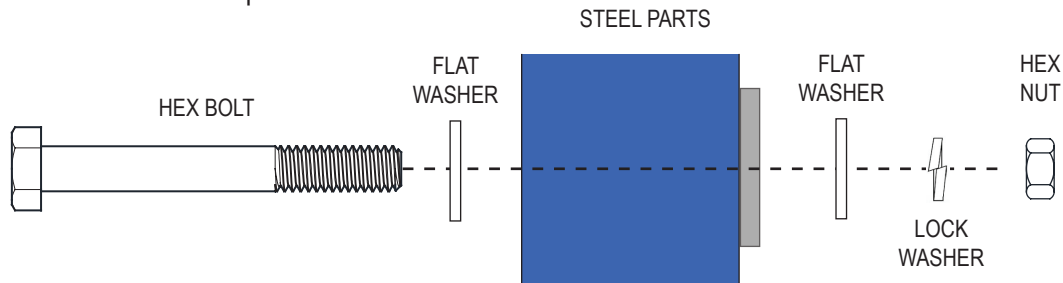
SimpleSesh



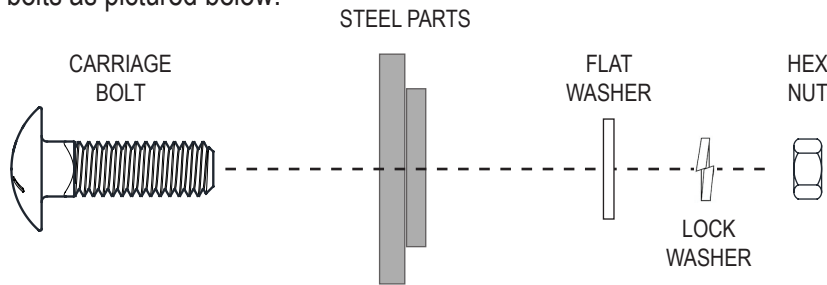
Assembly Instructions

- Assemble all parts on a non-scratch surface to prevent damaging the finish.
- It is important to follow the bolt direction and bolt tightening sequence as indicated in the illustrations. **DO NOT OVERTIGHTEN BOLTS AS TUBING CAN DISFIGURE.** Make sure all fasteners used are as specified. Using a fastener not specified in a particular application may result in too much thread exposure or not enough thread engagement.

Attach hex head bolts as pictured below:



Attach carriage bolts as pictured below:



Tools Required

For 5/16"-18 Hardware

2 x
1 1/2" open
end wrench

OR

1 x 1 1/2" open end wrench &
1 x ratchet with 1/2" socket

For 1"-8 Hardware

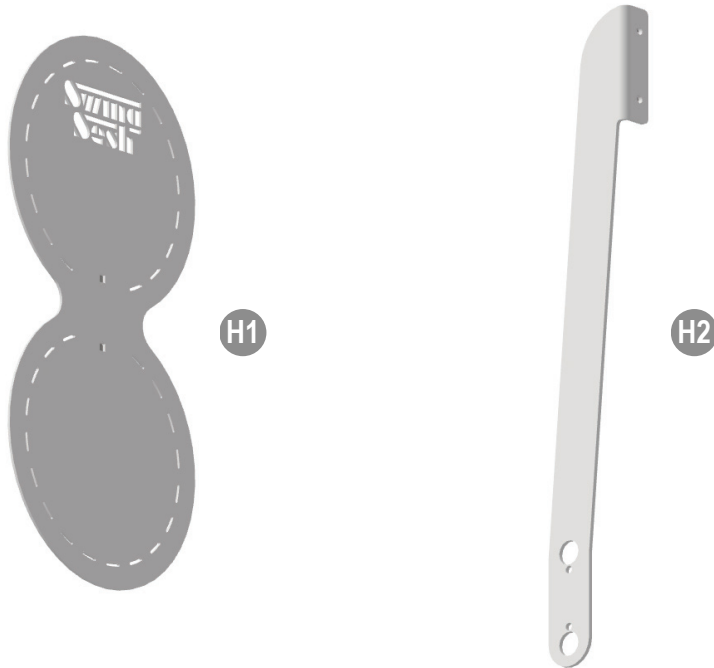
2 x
1 1/2" open
end wrench

OR

1 x 1 1/2" open end wrench &
1 x ratchet with 1 1/2" socket



Parts Identification

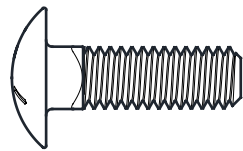


Hardware

(Shown actual size)

5/16" -18

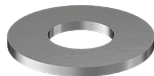
2 x 1" carriage bolts



2 x 3 1/2" bolts



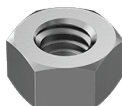
6 x 5/16" washers



4 x 5/16" split lock washers



4 x 5/16" nuts



STEP 1 Assemble Target & Bracket

PARTS REQUIRED:

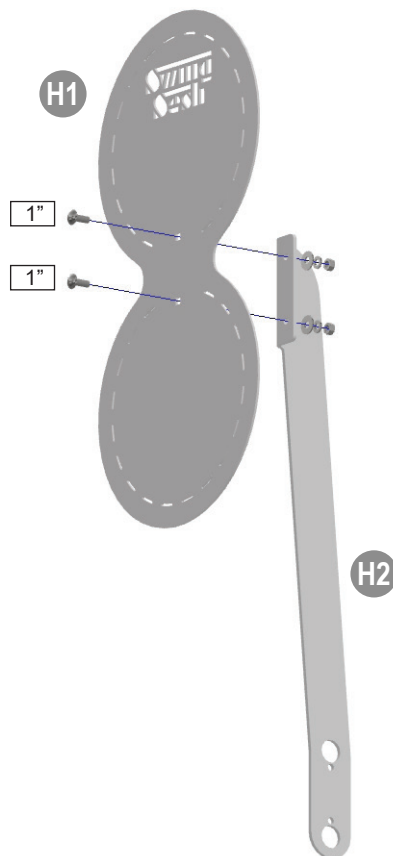
H1 Wall Ball Target Plate

H2 Wall Ball Arm

HARDWARE REQUIRED:

x2 1" carriage bolt, washer, lock washer, nut

- Using two (2) 1" carriage bolts, attach the Wall Ball Target Plate **H1** to the Wall Ball Arm **H2** as shown below. The rounded part of the carriage bolt should be on the front of the plate. Tighten all bolts.

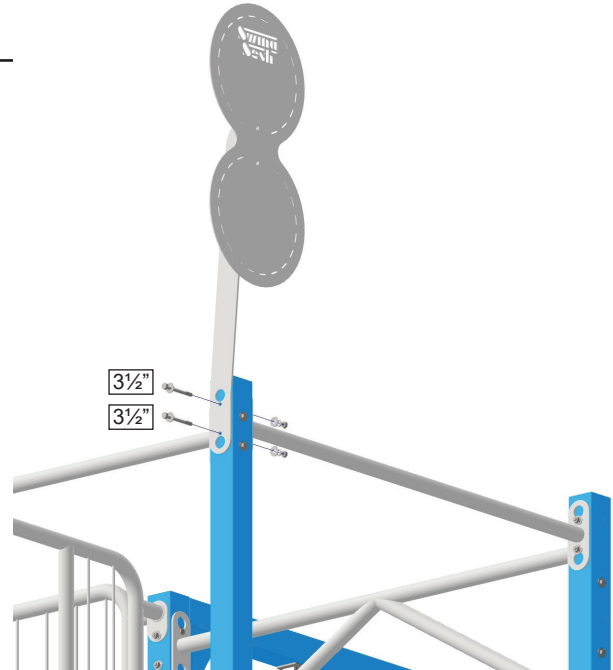


STEP 2 OPTION 1: Attach to Regular Post

HARDWARE REQUIRED:

x2 3½" bolt, 2 washers, lock washer, nut

- Attach to your preferred location (Post **A3** or **A5**) by removing the two (2) existing ¾" bolts, aligning the Wall Ball Target Arm **H2** and bolting with two (2) 3½" bolts provided.
- Tighten all bolts.

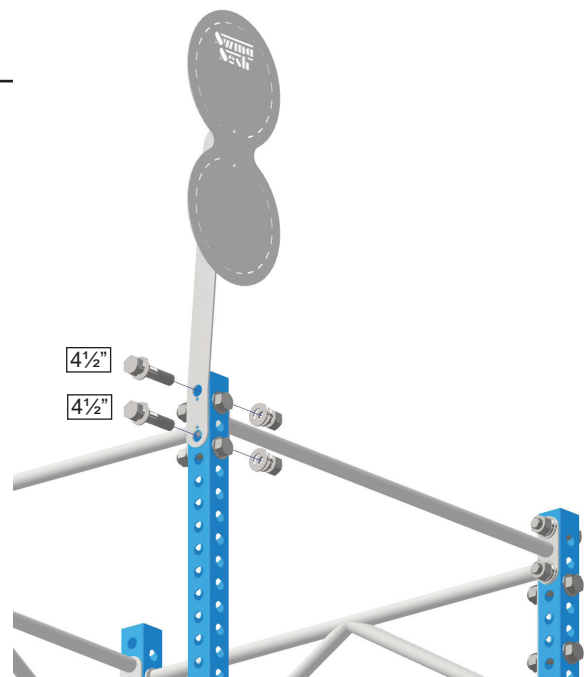


STEP 2 OPTION 2: Attach to Upgraded Post AH with 1-in Holes

HARDWARE REQUIRED:

None additional required

- Attach in your preferred location on any **AH** Post by removing the existing 4½" oversized bolts, aligning the Wall Ball Target Arm **H2** and replacing the bolts.
- Tighten all bolts.



Limited Warranty

We are confident in the quality of our products and dedicated to providing products that meet or exceed expectations.

Subject to proper installation and normal residential use, SwingSesh warrants to the original purchaser all accessories to be free from defects in material and workmanship for a period of one year from date of purchase. Accessories will be repaired or replaced, at our option, and returned to the customer.

In addition, for a period of five years during which the original purchaser owns the set, SwingSesh warrants to the original owner all above ground steel components against structural failure. Steel components covered under this limited warranty will be replaced, free of charge, excluding freight and labor fees. Installation of any components or accessories will be the responsibility of the original purchaser.

SwingSesh reserves the right to examine photographs or physical evidence of merchandise claimed to be defective, and to recover said merchandise prior to disposition of warranty claims. No warranty is offered on equipment subjected to abuse, negligence, improper installation, vandalism, acts of God, unauthorized alteration or attachment of equipment other than our own, or improper use, service or repair by customer or any third party. This warranty does not cover normal wear and tear or color fading.

SwingSesh's sole liability under this warranty is strictly limited to the repair or replacement of any defective product. In no event shall SwingSesh's liability under this warranty exceed the actual cost of materials necessary for repair or replacement of the product covered, whichever is less. SwingSesh shall not be liable for incidental, indirect, or consequential damages caused by its products. Please supervise your children's play activity and maintain your play equipment periodically.

Return Policy

Thank you for being a valued customer of SwingSesh! Our goal is for every customer to be completely satisfied with their purchase, but we understand that occasionally this may not be the case and products may need to be returned.

SwingSesh accepts the return of new, unused products that are unopened and in their original packaging. Please do not assemble or modify a product that you wish to return. Returns must be authorized and received within 30 days of delivery. For small parcel returns (apparel, accessories, etc), we do not require prior authorization, but returns must be received within 30 days of delivery.

Return shipping costs are the responsibility of the customer. We recommend that you insure return shipments and obtain tracking information. SwingSesh cannot be issued in full for items damaged in return shipping or items that are not received.

The return address is: SwingSesh, 838 21 1/2 Rd, Grand Junction CO 81505

A credit will be issued following the receipt of the returned items. All items are inspected to ensure that they are received in new condition, without damage, before a return is processed. Please allow 3-5 business days, after the return is received, to see the credit on your account. Return credit will be issued via the original payment method.

Please note that shipping charges are non-refundable. If products were shipped with free shipping the refund for the product will be less the actual shipping costs. SwingSesh reserves the right to reject any return that does not meet the return standards and may charge a re-stocking fee for returns up to 20% of the product cost.