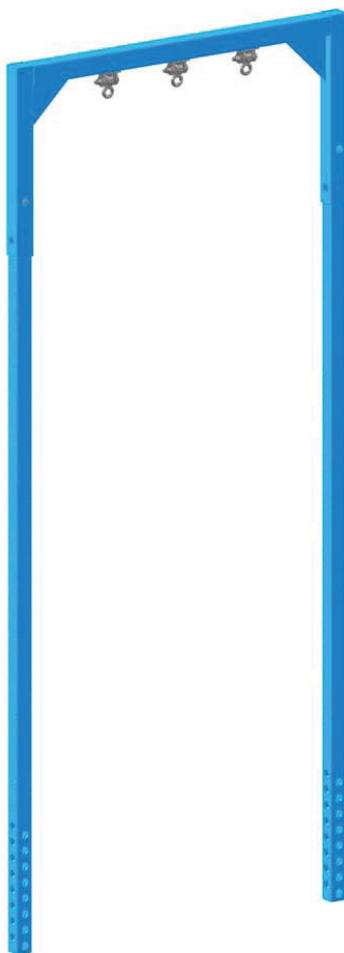


# Installation, Maintenance, & User Manual

## Two Post Climbing Extension Attachment



### **WARNING**

Read all precautions and instructions in this manual before using this equipment. Save this manual for future reference and in the event that the manufacturer has to be contacted.

Designed for persons 12 years & older.  
Maximum fall height: 15'-0"



13385 Joy Road

Lusby, MD 20657

[www.swingseesh.com](http://www.swingseesh.com)



# Contents

Determine Your Configuration ..... 2  
Assembly Instructions ..... 4  
    Tools Required ..... 4  
    Parts Identification ..... 4  
    Hardware ..... 5  
Limited Warranty & Return Policy ..... 10

---


## Replacement Parts or Questions


If you have questions after reading this manual, please call our Customer Care Team and our staff will provide assistance. If any parts or components arrive damaged, we will do our best to provide replacement parts as soon as possible.

Customer Care:      1-301-247-2881  
                          Monday - Friday, 8am-5pm EST

Please save this manual in the event that you need to contact SwingSesh.

---

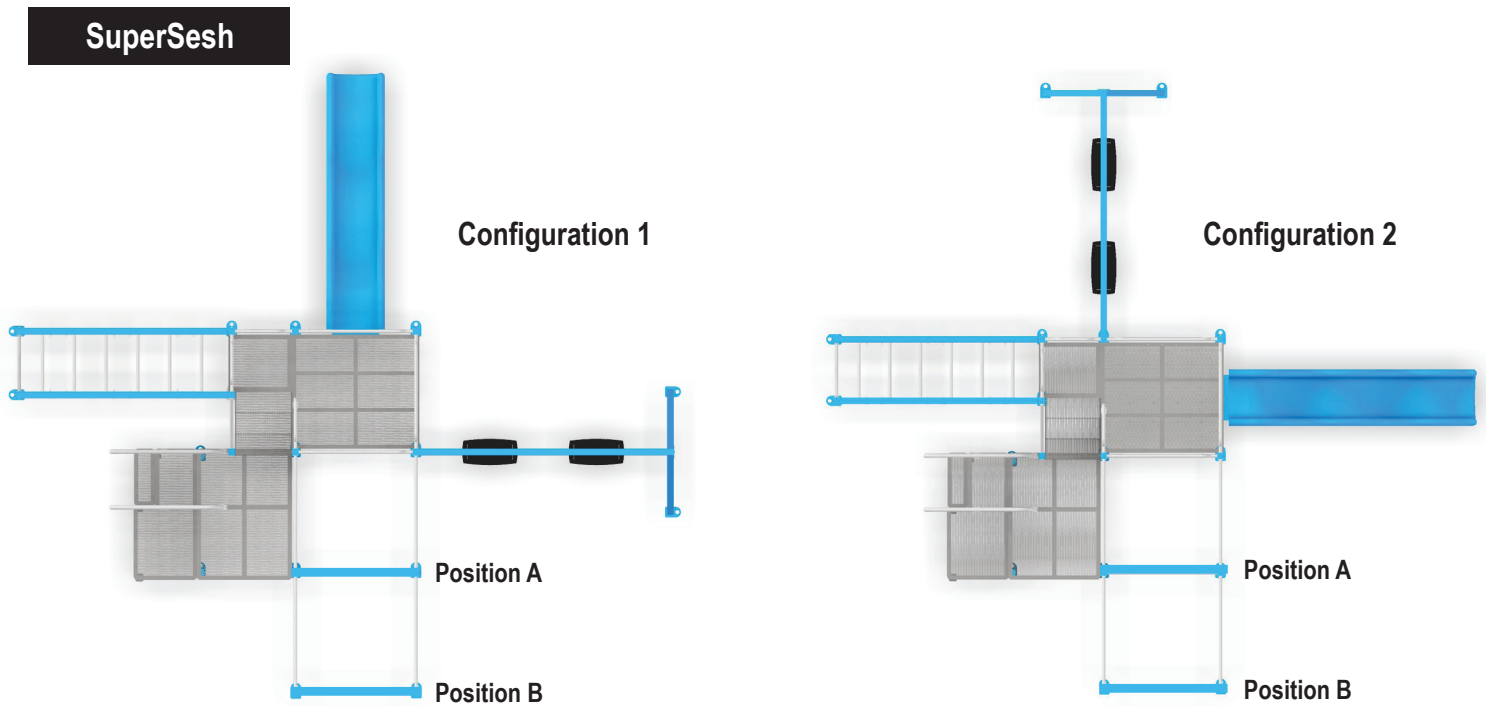
 <b>WARNING</b>
Read this manual prior to assembling and using the equipment. Save this manual for future reference.

 <b>WARNING</b>
This product must be anchored.

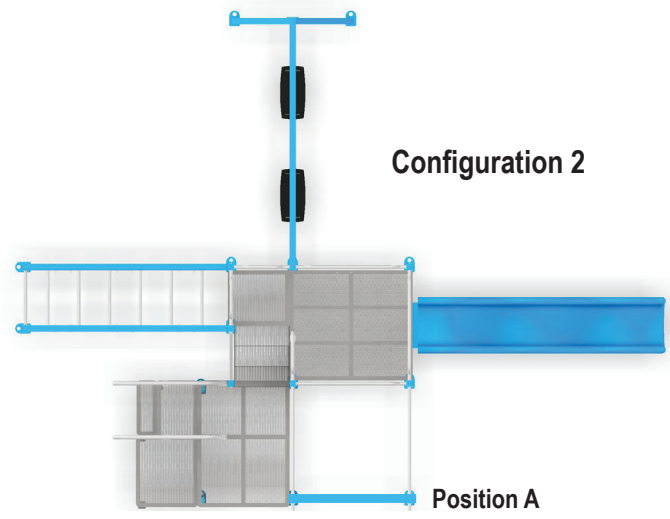
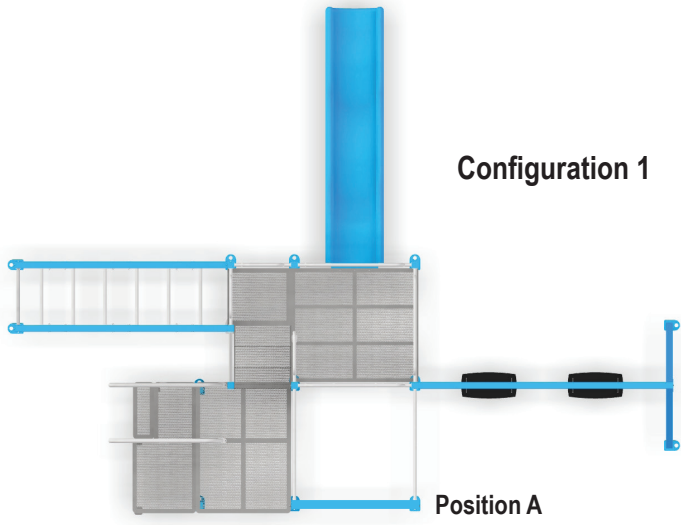
# Determine Your Configuration

**PLEASE READ INSTRUCTIONS CAREFULLY BEFORE BEGINNING INSTALLATION.**

Determine your configuration before starting installation of the set. **Review the diagrams below for acceptable locations for your model and configuration.**

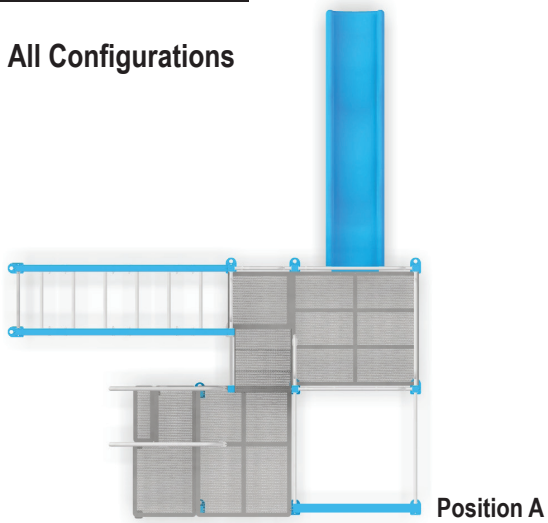


**SwingSesh**



**SlimSesh**

All Configurations

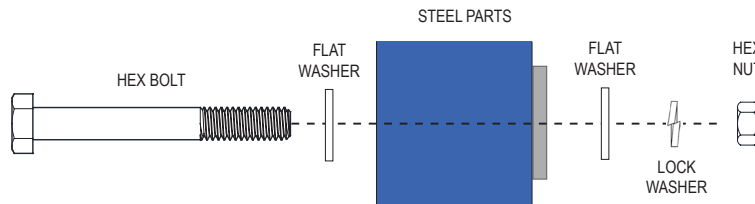


**SimpleSesh**

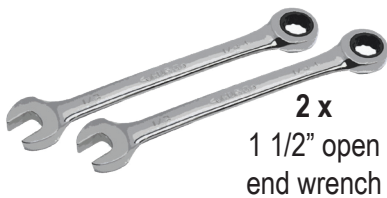


# Assembly Instructions

- **Minimum of 4-5 capable adults are required for setup** as the climbing extension attachment is extremely heavy. Clear the area on ground and through the arc of the post as it is raised to ensure no wires or obstructions. Ensure there are no wires within 10-ft of the final location of the climbing extension attachment.
- **Failure to clear the area or failure to maintain control of the assembly throughout the setup may result in severe injury or death.**
- Determine your configuration before starting installation of the set. Review the diagram provided for acceptable locations based on your model and configuration.
- **It is critical that the entire set be assembled BEFORE the climbing extension is attached. On initial setups, it is recommended that the set be anchored AFTER the climbing extension has been attached.** When the climbing extension is added on to a set, one or two earth anchors will need to be removed prior to installing the extension.
- Assemble all parts on a non-scratch surface to prevent damaging the finish.
- It is important to follow the bolt direction and bolt tightening sequence as indicated in the illustrations. Make sure all fasteners used are as specified. Using a fastener not specified in a particular application may result in too much thread exposure or not enough thread engagement. Attach hex head bolts as pictured:



## Tools Required



OR

1 x 1 1/2" open end wrench &  
1 x ratchet with 1 1/2" socket



4



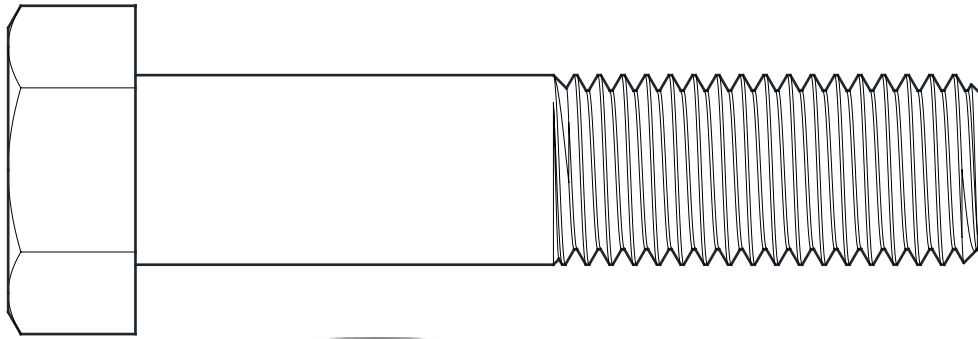
## Parts Identification



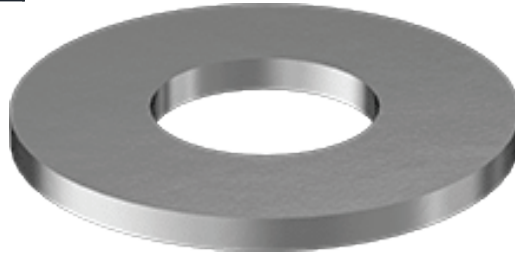
# Hardware

(Shown actual size)

4 x 4 1/2" bolts



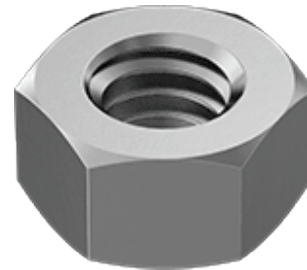
8 x washers



4 x split lock washer



4 x nuts

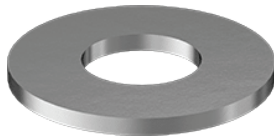


## 1/2" HARDWARE

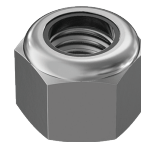
3 x Shoulder bolt



12 x 1/2" washers

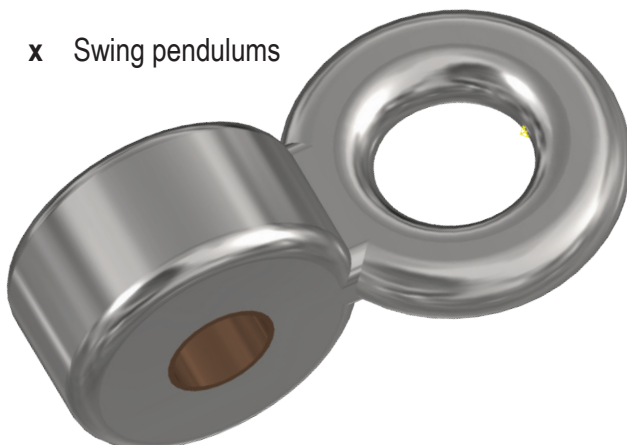


3 x Nyloc locknuts



## PENDULUMS

3 x Swing pendulums



## STEP 1 Ground Assembly

**PARTS REQUIRED:**

**AH** x2 Holed Post (from existing set)

**A16** x2 Extension Post

**A19** Climbing Extension Cap

**HARDWARE REQUIRED:**

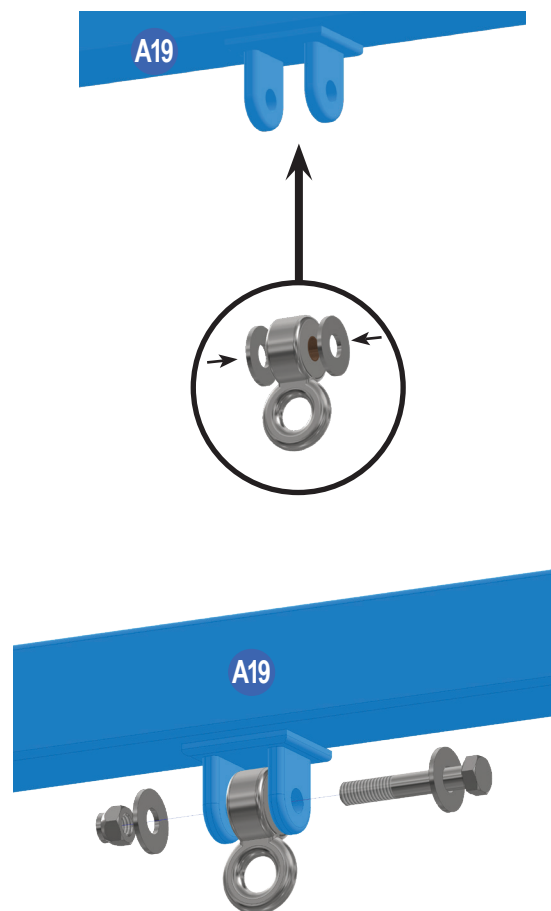
**x4** 4½" oversized bolts, 2 washers, lock washer, nut

**x3 sets** Shoulder bolt, 4 washers, nylock nut

**x3** Swing Pendulums

### STEP 1a

- Attach the three pendulums to Climbing Extension Cap **A19**. Sandwich two washers around the pendulum and align between the pendulum mount tabs.
- While holding the pendulum, insert a shoulder bolt with one (1) flat washer through the pendulum mount tab, pendulum, and second mount tab.
- Place one (1) washer on bolt and secure with one (1) nylock nut. Tighten snug; do not overtighten.



### STEP 1b

- Review the acceptable positions (page 2) for the climbing extension attachment and unbolt and lower the selected **AH** Posts from the assembled set. Depending on the chosen position, the Pull Up Bar or Braced Pull Up Bar will also be removed.
- Align the feet of the **AH** Posts to their approximate final assembled location.
- Remove all bolts, these bolts will be used in Step 3.

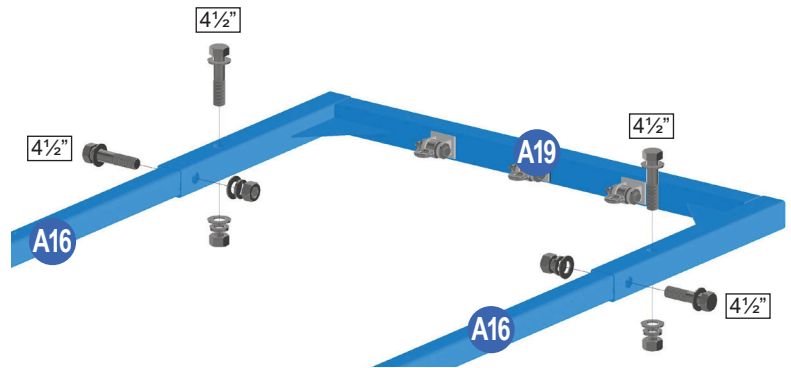


**STEP 1c**

- Fold and insert the **(D5)** Plastic Spacers. Place on top of **A16** Posts while sliding them into the **A19** Extension Cap.

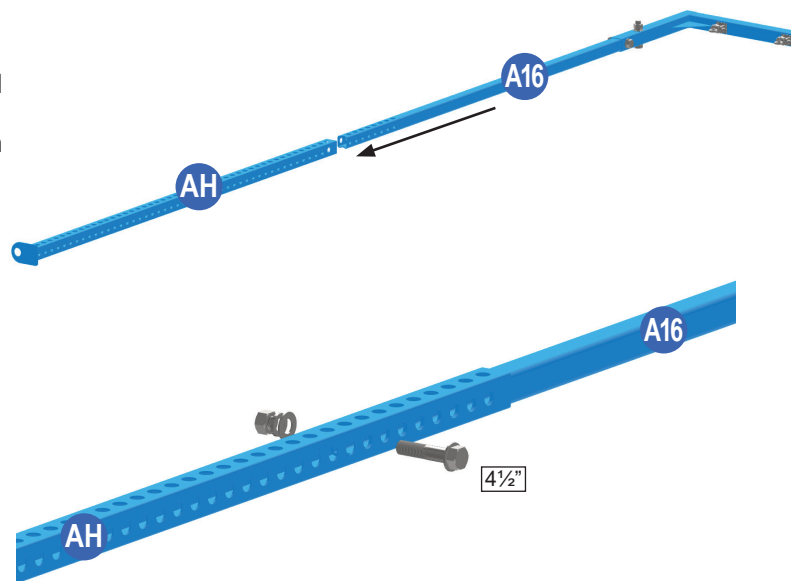
**STEP 1d**

- Bolt the Climbing Extension Cap **A19** to the Extension Post **A16** using two (2) 4½" oversized bolts.



**STEP 1e**


- Insert the Extension Posts **A16** into the selected **AH** Posts until all the holes on **A16** are within in the receiver post.
- Insert one (1) 4½" oversized bolt through both **AH** Posts and through the lowest hole of each **A16** Post. Securely hand tighten this bolt as it may need to be moved later. (Use one of the bolts removed from the assembled set in the Step 1b.)



**STEP 1f**

- Attach the climbing rope or rings before standing the extension into place.

## STEP 2 Preparation Before Raising the Climbing Extension

- Extreme care should be taken to ensure the area is clear before standing up the post into position.
- No children should be present and no one should be within 25 feet as loss of control of the post may result in serious injury or death.
- Look up and clear the area to ensure no power lines or other obstructions will interfere with the arc the post will translate during raising.
- Prepare two 4 ½" bolts with flat washers to have quick access to them once the post has been raised into place.
- During assembly, two people must maintain control of the posts until the climbing extension and  Posts have been securely attached to the set by at least two tightened bolts.

## STEP 3 Raising & Securing the Climbing Extension

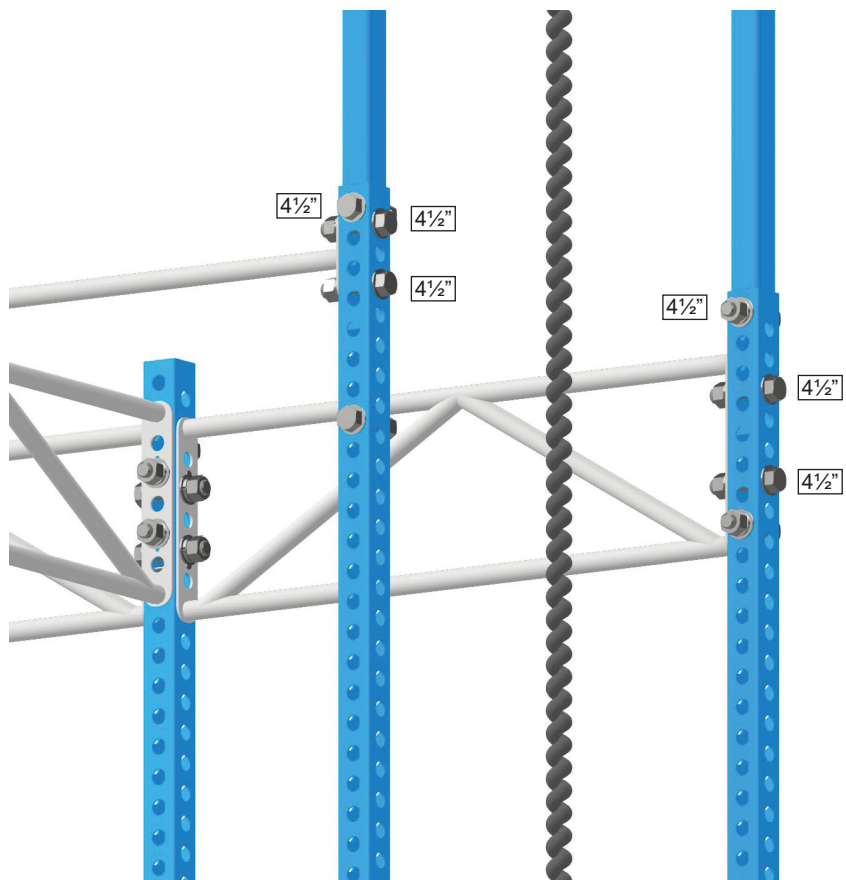
**PARTS REQUIRED:**

**AH** **A16** **A19** **A16** **AH** Climbing Extension Assembly

**HARDWARE REQUIRED:**

**x8** 4½" oversized bolts, 2 washers, lock washer, nut (removed in Step 1b)

- With the feet of the **AH** Posts aligned to their approximate final assembled position, one or two people on each post lift and raise it up. Another person stands on the tower deck with the rope or rings in hand helping to pull and stabilize the extension.
- While two people maintain control and balance of the posts and the person on the deck remains holding the rope, a fourth person aligns and inserts the bolts. Re-attach the three (6) 4 ½" oversized bolts through the Climbing Extension Assembly and adjacent Pull Up Bar and/or Braced Bar, as shown and depending on your configuration. If needed, remove the safety bolt inserted earlier and move it to its final location. Tighten all bolts.
- According to the main set instruction manual, insert earth anchors through the feet of both posts to which the climbing extension is attached.



# Limited Warranty

**We are confident in the quality of our products and dedicated to providing products that meet or exceed expectations.**

Subject to proper installation and normal residential use, SwingSesh warrants to the original purchaser all accessories to be free from defects in material and workmanship for a period of one year from date of purchase. Accessories will be repaired or replaced, at our option, and returned to the customer.

In addition, for a period of five years during which the original purchaser owns the set, SwingSesh warrants to the original owner all above ground steel components against structural failure. Steel components covered under this limited warranty will be replaced, free of charge, excluding freight and labor fees. Installation of any components or accessories will be the responsibility of the original purchaser.

SwingSesh reserves the right to examine photographs or physical evidence of merchandise claimed to be defective, and to recover said merchandise prior to disposition of warranty claims. No warranty is offered on equipment subjected to abuse, negligence, improper installation, vandalism, acts of God, unauthorized alteration or attachment of equipment other than our own, or improper use, service or repair by customer or any third party. This warranty does not cover normal wear and tear or color fading.

SwingSesh's sole liability under this warranty is strictly limited to the repair or replacement of any defective product. In no event shall SwingSesh's liability under this warranty exceed the actual cost of materials necessary for repair or replacement of the product covered, whichever is less. SwingSesh shall not be liable for incidental, indirect, or consequential damages caused by its products. Please supervise your children's play activity and maintain your play equipment periodically.

# Return Policy

**Thank you for being a valued customer of SwingSesh! Our goal is for every customer to be completely satisfied with their purchase, but we understand that occasionally this may not be the case and products may need to be returned.**

SwingSesh accepts the return of new, unused products that are unopened and in their original packaging. Please do not assemble or modify a product that you wish to return. Returns must be authorized and received within 30 days of delivery. For small parcel returns (apparel, accessories, etc), we do not require prior authorization, but returns must be received within 30 days of delivery.

Return shipping costs are the responsibility of the customer. We recommend that you insure return shipments and obtain tracking information. SwingSesh cannot be issued in full for items damaged in return shipping or items that are not received.

The return address is: SwingSesh LLC, 838 21 1/2 Rd, Grand Junction CO 81505

A credit will be issued following the receipt of the returned items. All items are inspected to ensure that they are received in new condition, without damage, before a return is processed. Please allow 3-5 business days, after the return is received, to see the credit on your account. Return credit will be issued via the original payment method.

Please note that shipping charges are non-refundable. If products were shipped with free shipping the refund for the product will be less the actual shipping costs. SwingSesh reserves the right to reject any return that does not meet the return standards and may charge a re-stocking fee for returns up to 20% of the product cost.