



**Project Series  
No 10**

## **Educating and Informing Sugarcrafters Worldwide**

### **Versatile Cloud Cutters**



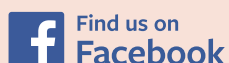
Cake for illustration purposes showing how the cutters can be used.

See the FMM catalogue for the full range of products.

FMM products are widely available.  
Contact your local stockist or FMM for further information.  
To arrange a shop, college or group demonstration contact FMM.

See overleaf for instructions on how to use the cutters.

[www.fmmsugarcraft.com](http://www.fmmsugarcraft.com)



+44 (0) 1442 292 970

# Versatile Cloud Cutters

# Project Series No 10

### Equipment:

#### FMM Items

Cloud Cutter Set  
Flute & Vein Tool  
Knife & Scriber Tool  
Arches Cutter Set  
Stone Wall Impression Mat  
Ejector Plunger

Firm Foam Former Pad

Dab-a -Dust

Blossom Set of 3

Multi-Ribbon Cutter

#### Non FMM Items

Small Non Stick Rolling Pin

Cake Baked and Covered on a Board

Pot of Water

Modeling paste colours green (3 shades) light and dark grey, pink, red, yellow, brown, beige and white  
Small Paintbrush

Instructions for Train Cake Topper are not included. A toy train can be used.

### General Information:

Add CMC/Tylose to fondant to make modeling paste. Dust your work surface with your Dab-a-Dust to prevent paste from sticking. Refer to Cloud cutter instructions on pack for thickness and cutting. Attach decorations to cake with water.

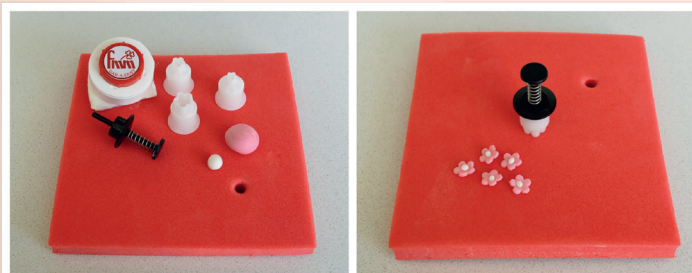
### Shrubs

Cut 2 clouds in different shades of green. Overlap cloud 2 on cloud 1. Place the cutter for cloud 2 over the top of cloud 1 and cut in to cloud 1 below it. Remove any excess paste. Cloud 1 will now fit neatly in to cloud 2 like a jigsaw puzzle. Continue this with your clouds until you have enough to cover the bottom tier of your cake in shrubs.



### Flowers

Cut out some blossom flowers. Eject the blossoms on to your FMM Foam Former, roll small balls of white paste for the centres and secure in place.



### Clouds

Cut out your clouds from your white modeling paste.



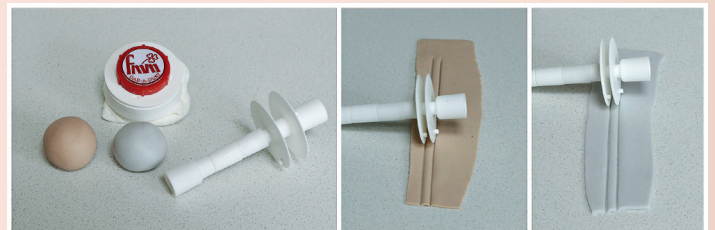
### Tunnel

Cut out an arch shape from the dark grey modeling paste. Roll out your light grey modeling paste to 4mm thick and lay your stone wall impression mat on top. Using the palm of your hand apply a firm amount of pressure on top. Remove the mat and cut out strips of modeling paste with your knife tool. Attach to the edge of the rim of your tunnel.



### Railway Track

Using your FMM Multi-Ribbon Cutter on the smallest setting. Cut out thin strips of beige paste and cut them to size with your knife tool to fit neatly around your cake on the cake board. Repeat this for the track rails using the grey modeling paste. Make the strips of modeling paste as long as possible.



Filtering Media Manufacturers Ltd • Unit 7, Chancerygate Business Centre • Whiteleaf Road  
Hemel Hempstead • Hertfordshire • HP3 9HD • United Kingdom

Tel: +44 (0) 1442 292 970 • Fax: +44 (0) 1442 260 158

sales@fmmsugarcraft.com • www.fmmsugarcraft.com