

2007 – Current Tundra Rock Slider Installation instructions

Congratulations on the purchase of your new Hefty Fabworks Rock Sliders.



Note:

These sliders will fit the 2007 through current model year Tundra Crew Max and Access Cab Tundras. There are minor variations in the frame design from year to year and as such some holes in the frame are in different places. Accommodations for these variations are built into the sliders but pictures may not match exactly.

Hardware List:

	QTY
M10-1.25X40 BOLT	1
3/8IN X 1 1/2IN BOLT	3
3/8IN Flange Nuts.....	3
1/2IN X 3 1/2IN BOLT	2
1/2IN FLT WASHER	11
1/2IN LOCK WASHER	9
1/2IN NUT	9
3/8 FLT WASHER	6
1/4IN SQ ALUMINUM WASHER	2
1/2IN CAPTURE BOLT (Bolt welded to large square plate)	7

Tools Required

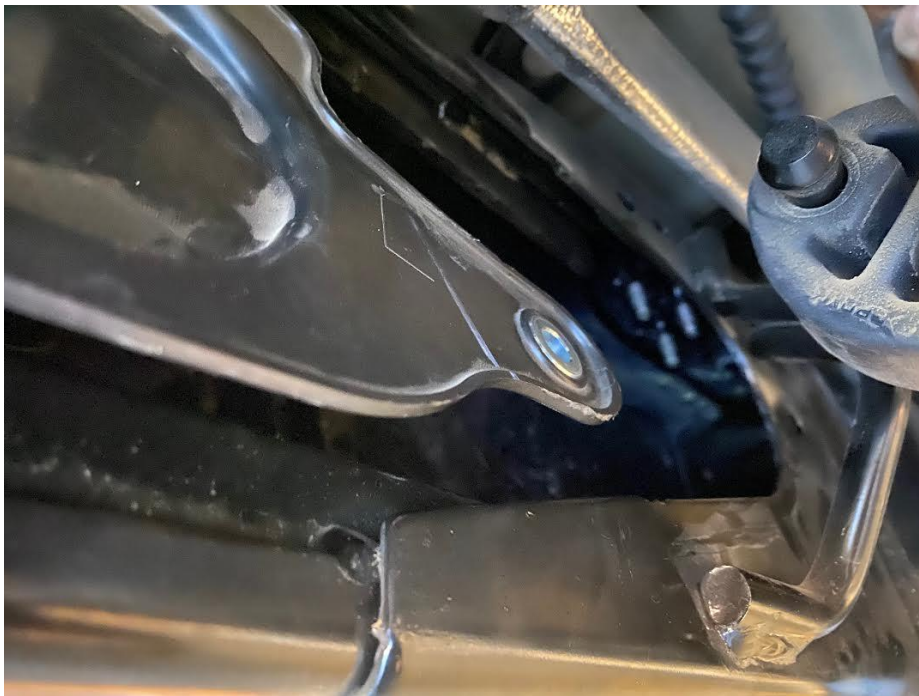
- 3/4" Mechanics wrench
- 1/2" or 3/8" Ratchet
- 3/4" Socket
- 10mm Socket
- 12mm Socket
- 13mm Socket
- 9/16" Socket

Step One:

If equipped, Remove factory or aftermarket fuel tank skid

Step Two:

If equipped, Remove front frame gap covers and slide back to gain access to the inside of the frame

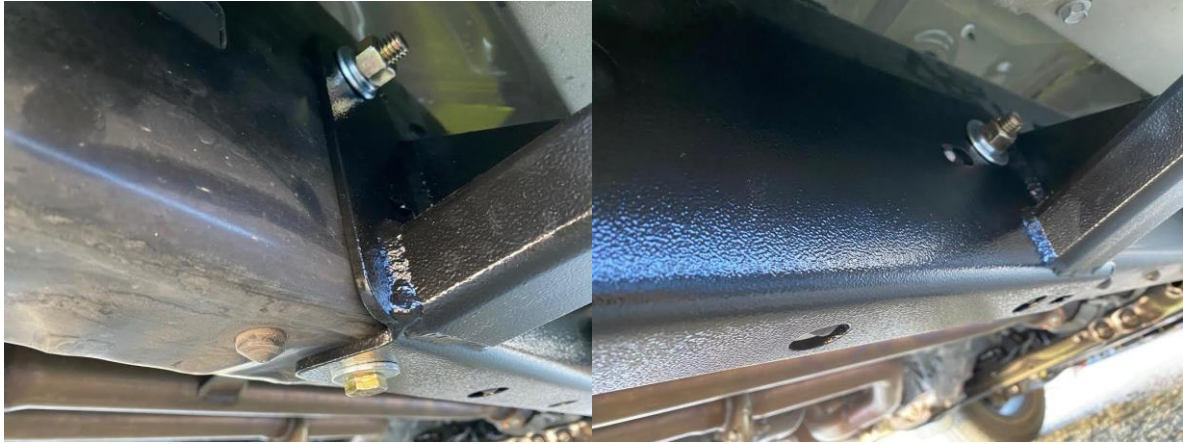


Step Three:

Starting with the Passenger side, remove the rear bolt holding the brake line to the rear portion of the frame. Repeat on Drivers side

Step Four:

Align the passenger side slider up to the frame. Use a jack or an extra set of hands to support the slider making sure it is secure. There are several holes in the rear frame bracket that will line up with the rivets in the truck frame. In addition, there are several additional holes for mounting hardware.



Passenger side rear mount: Two ½ Capture Bolts from inside of Frame through the slider, then fender washer, lock washer and Nut
One 3/8" bolt through the hole in the bottom of the frame with washers and nuts.

Step Five:

Install hardware as pictured: Front Mount



Two Captured Bolts through frame side. Lower bolt is a 3 ½" long bolt, use the supplied Square washer at the bottom of the angled plate. (Drivers Side is the same procedure)

Step Six:

Reinstall Brake line bracket and bolt.

Step Seven:

Drivers side rear bracket:



Rear most frame bolt is the 10MM bolt supplied.

Reinstall the brake line over the slider mount.

Install the Captured Bolt on the front frame hole

Install the 3/8" bolts through the bottom of the frame.

Step Eight:

Install hardware on Front mount (refer to step 5)