



Hefty Fabworks

2014+ Toyota 4Runner Banshee Bumper Installation Guide

Thank you for your purchase! Please take some time to read completely through the instructions before proceeding with the installation and do not hesitate to call if you have any questions. Please take precaution during installation. Safety equipment is required for all Hefty Fabworks product installations and all required/recommended tools, for the installation, are listed below. Lastly, enjoy your new purchase!

Preparation: Remove bumper and associated parts from box. Be very careful to not cut or scratch the product inside. Lay bumper and included parts aside. Verify all included parts are accounted for before proceeding with installation. Once confirmed, proceed with the installation.

NOTE: THIS PRODUCT COMES UNCOATED AND WILL NEED TO BE PAINTED OR POWDER COATED BEFORE INSTALLATION

- | | |
|---|--|
| <input type="checkbox"/> Frame Mount Bracket QTY 2 | <input type="checkbox"/> 10 mm Bolts QTY 8 |
| <input type="checkbox"/> Factory Bumper Bracket QTY 2 | <input type="checkbox"/> 12 mm Bolts QTY 2 |
| <input type="checkbox"/> ½" Nuts QTY 4 | <input type="checkbox"/> 5/16" Stainless Button Head Bolts QTY 12 |
| <input type="checkbox"/> ½" Bolts QTY 4 | <input type="checkbox"/> Optional equipment: Winch Access shell, Plain Face Shell, Low Hoop, Mesh Insert |
| <input type="checkbox"/> 3/8" Bolt QTY 2 | |
| <input type="checkbox"/> 5/16" Washer QTY 12 | |
| <input type="checkbox"/> 3/8" Washer QTY 8 | |
| <input type="checkbox"/> ½" Washer QTY 2 | |

Tools Required:

- | | |
|---|---|
| <input type="checkbox"/> Socket Wrench | <input type="checkbox"/> ¾" Wrench |
| <input type="checkbox"/> Socket Extension | <input type="checkbox"/> 3/16" Allen Wrench |
| <input type="checkbox"/> 10mm Socket | <input type="checkbox"/> Phillips & Flat Head Screw Drivers |
| <input type="checkbox"/> 12mm Socket | <input type="checkbox"/> Measuring Tape |
| <input type="checkbox"/> 14mm Socket | <input type="checkbox"/> Cutting tool (see recommended tools below) |
| <input type="checkbox"/> 15mm Socket | |
| <input type="checkbox"/> ¾" Socket | |

Tools Recommended:

- Impact Driver
- Bumper Cutting Tool (Choose one)
 - Jig-Saw (*Best Option*)
 - Angle Grinder w/ Cutting Blade
 - Dremel w/ Cutting Blade
 - Box Cutter (useful but not recommended for the main cuts)
- Painters Tape (2" blue)/Frog Tape (1" green)

Installation:

1. Open hood and remove the radiator cover by pushing down in the center of the clips then remove them
2. One center 10MM bolt at the latch assembly and 4 push clips will be removed from the upper grill assembly. Remove the screws and bolts from around the lower edge of the bumper cover and inside the fender well.
3. Separate the inner fender liners from the bumper cover.
4. Unplug the fog lights
5. Remove the front bumper cover
6. Remove lower center chin cover (lower valance) if equipped.

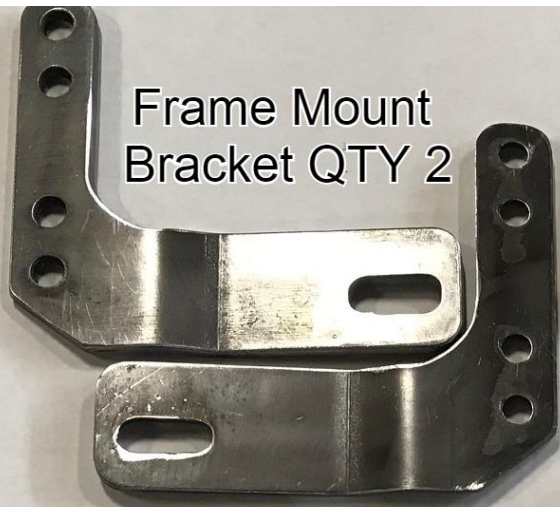
The fun part!

7. Mark your cut lines according to the pictures below
8. Clean cut edges from any debris.
9. On the truck, Remove the aluminum crash bar and plastic lower valance. (17mm socket)
10. Remove the crush cans from the frame horns (Black steel boxes the crash bar was bolted to)
11. Trim or remove the air dam inserts
12. Install the Banshee Bumper Skeleton structure. (Note: this product is designed to work with or without a 1" body lift. If a body lift is installed on the vehicle move the skeleton structure up one hole on the mounts)
13. At this point a winch and light bar can be installed and wired prior to reinstalling the factory bumper cover. The factory steering cooler line may need to be pushed back depending on the winch being installed. If the cooler line has to be pushed back this can be done by bending the mounting brackets for the cooler lines to move the line.
14. Install the "L" shaped brackets from the Skeleton to the side frame of the factory frame.
15. Install the factory bumper support brackets to the skeleton structure
16. Reinstall the factory bumper cover in the reverse order that it was taken off.
17. Hook up your fog lights.
18. Using a supplied 3/8" bolt and washer, attach the lower bumper cover to the support bracket.
19. Install the Banshee cover and optional hoop.

Below link is an installation video of a similar product. We will be making an install video in the next couple weeks but in the meantime, this is a good reference.

<https://youtu.be/KqfBkH6C8fM>

Frame Mount
Bracket QTY 2



Factory Bumper
Bracket QTY 2



1/2" Nuts QTY 4



1/2" Bolt QTY 4



3/8" Bolt
QTY 2



5/16" Washer
QTY 12



3/8" Washer QTY 8



1/2" Washer
QTY 2



10 mm Bolts QTY 8



12 mm Bolts
QTY 2



5/16" Stainless
Button Head Bolts QTY 12

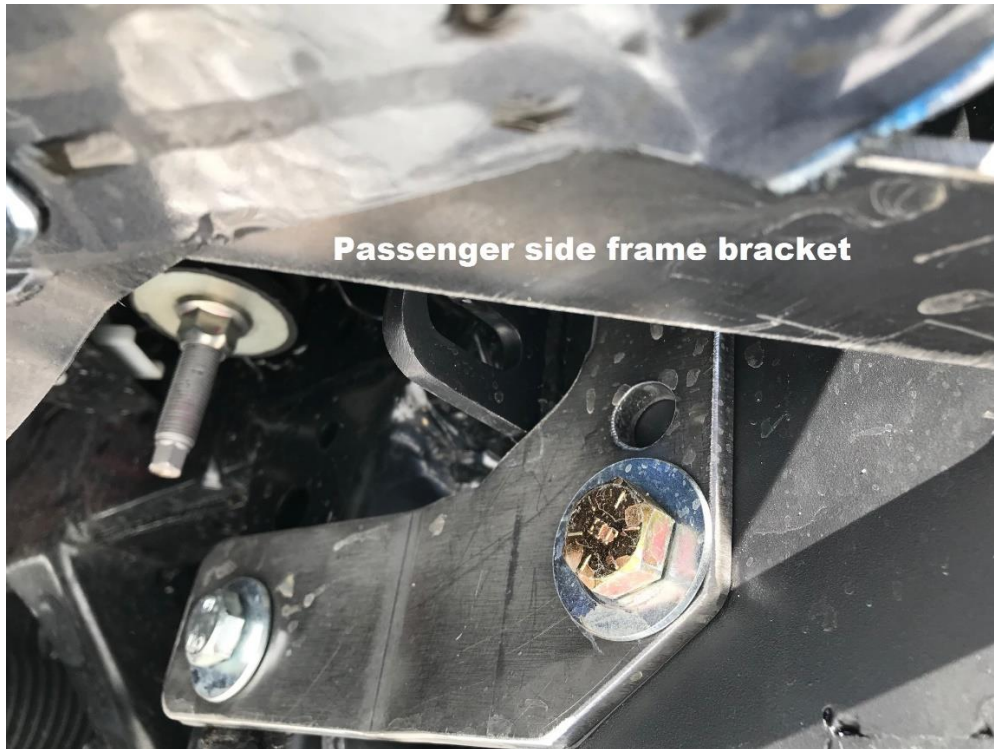




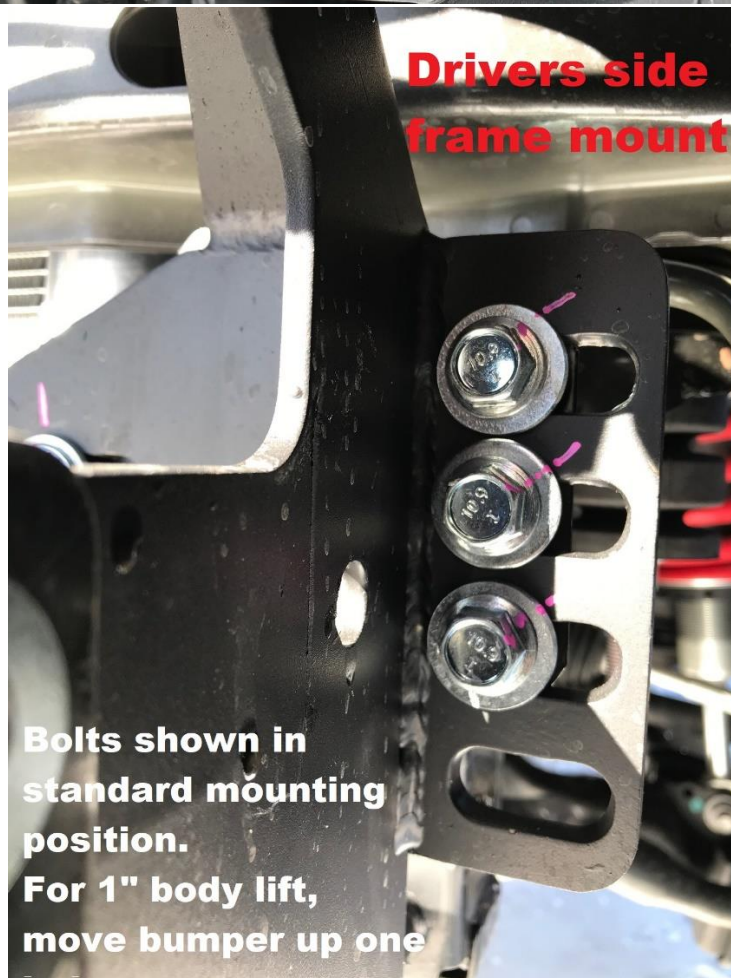


Passenger side factory bumper bracket





Passenger side frame bracket



**Drivers side
frame mount**

**Bolts shown in
standard mounting
position.
For 1" body lift,
move bumper up one**

Stainless Allen Bolts and Washers
Four on top of bumper.
Three underneath.

