



MORPHEW
**retail
consultant**



retail consultant program

grow your future in fashion

Want to be your own boss, have a flexible schedule and gain access to one of the top archives in the world? Are you looking to expand your high-end client offerings? We invite you to join us as a Retail Consultant!





what it is

Morphew Retail Consultant Program

This is an opportunity for accomplished stylists and personal shoppers to grow their businesses while leveraging the Morphew brand and inventory for new and existing clients.

NYC | MIAMI | LA | REMOTE ONLINE



benefits

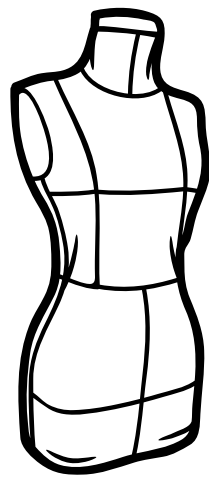
Morphew Retail Consultant Program

- Earn up to 20% commission on the sale of Morphew inventory - earn more with our tiered compensation structure
- Full access to our online inventory and showrooms in Miami and New York
- Free fitting and photo shoot pulls



inspiration & inventory

Morphew Retail Consultant Program



Our Retail Consultant Program gives you online and in-person access to an extensive luxury vintage showroom in NY or our retail store in Miami with both designer and non-designer items. We range from the 1800s-early 2000s so something for all your clients.





room to style

Morphew Retail Consultant Program

We will provide the showroom space (if needed), as well as the product, garment racks, hangers, shopping bags and all sales transaction expenses!





The showroom hours are flexible to meet your client's needs. You can host your clients in the showroom or do a pull to bring offsite. All Morphey Consultants are waived the traditional memo/fitting fee which expands the sales opportunity to bring more pieces.

a fitting match

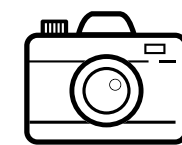
Morphey Retail Consultant Program



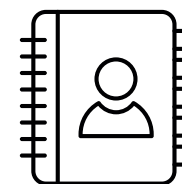


influence

Morphew Retail Consultant Program

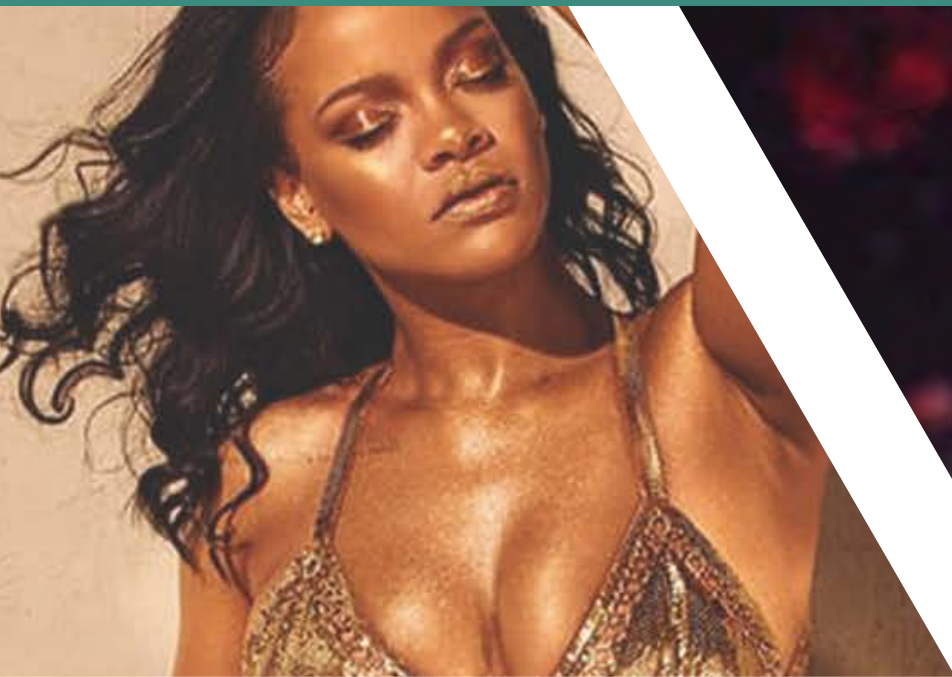


Elevate your social presence with bespoke pieces by Morphew



Grow your reach, while dazzling new and existing clients with A-list looks





- Emily Ratajkowski
- Kim Kardashian
- Florence Welch
- Rihanna
- Nora Jones
- Madonna
- Miley Cyrus

- Iman
- Suki Waterhouse
- Heidi Klum
- Amal Clooney
- Kourtney Kardashian
- Kendall Jenner
- And more...

who's wearing MORPHEW

responsibilities

Morphew Retail Consultant Program

- Bring in the clients and contact information.
- Curate the goods for appointments, in-person or remotely. You know your people best. We'll always assist but this is the fun part, so we want your eye!
- We do not cover delivery or messenger fees. If you cannot make it into the showroom, you and/or your client will be responsible for those fees.
- If you are styling outside NYC or Miami and require shipment of goods, you and/or your client will be responsible for all transit fees. All goods must be securely transported with proof of insurance.
- Acknowledge and sign our terms and conditions.



Commission tiers

Morpheus Retail Consultant Program

Silver Status

- Full access to showroom or store
- Free memo/fitting pulls
- Can use website for online sales
- 10% commission

Up to 25K YTD sales

Gold Status

- Full access to showroom or store
- Free memo/fitting pulls
- Personal login & access to digital styling curation app.
- 1 Free Photoshoot pull per month, limited to 15 pieces.
- 15% commission

25,001 - 50K YTD sales

Platinum Status

- Full access to showroom or store
- Free memo/fitting pulls
- Personal login & access to digital styling curation app.
- Free messaging or ground shipping (within the US) to clients
- 3 free photoshoot pulls per month (max 15 pieces per pull)
- 20% commission

50,001K + YTD sales

After your first year, sales status will be reviewed with the Director for the following year. Sales must be consistent in order to maintain Gold or Platinum status.



sustainable fashion

Sustainability is not a trend for us at Morpew, it is a lifestyle and life code. The Earth is all we have.

Sustainability in fashion is here to stay! Working with vintage materials since their beginning, Morpew has been an advocate of ethical design in today's fashion practices. We preserve even the smallest cuttings of antique textiles to use for both Morpew Collection and Atelier...nothing goes to waste!





refer a stylist

Morphew Retail Consultant Program



Know other stylists interested in the program? Please refer them to us and we will apply additional commission from their sales! Referral bonus maxes out at \$1250 per stylist referred. This is separate from your YTD sales reports.



MORPHEW

retail consultant

Apply Now

See all our programs