

Izabela

Transmitter for Apple devices using the 30-pin Connector



Works With

- iPhone 4 and 4S
- iPad (2nd Gen and 3rd Gen)

Requirements

- iOS 7 and later
- The SKAA Cmd App must be installed and running in the background

Notes

- Even though SKAA cmd has to be running when using Izabella, it can be running in the background. Which means you can still use all of your other apps while streaming with SKAA.



Diz

Transmitter for Apple devices using the Lightning Connector



Works With	<ul style="list-style-type: none">• iPhone (5 and later)• iPod Touch (5th Gen and later)• iPad (4th Gen and later, including iPad Mini, iPad Pro and iPad Air)
Requirements	<ul style="list-style-type: none">• iOS 7 and later
Notes	<ul style="list-style-type: none">• iOS 11 exposed an issue with some Diz transmitters. If you have encountered any issues that began after upgrading to iOS 11, visit SKAA.com/TLC for warranty support.

Gemma

Transmitter for Android and other portable devices with a micro-USB receptacle



Works With

- Android devices

Requirements

- Android OS 5 and later
- Must support USB Host Mode Audio (often available with USB OTG)

Notes

- If a “non-Android” device supports USB Host Mode Audio, over a micro-USB connector, Gemma will likely be compatible with that device as well.

Cassandra

Transmitter for Android and other portable devices with a USB-C receptacle



Works With	<ul style="list-style-type: none">• Android devices
Requirements	<ul style="list-style-type: none">• Android OS 5 and later• Must support USB Host Mode Audio (often available with USB OTG)
Notes	<ul style="list-style-type: none">• If a “non-Android” device supports USB Host Mode Audio, over a USB-C connector, Gemma will likely be compatible with that device as well.



DO5588 SKAA TRANSMITTER USER'S GUIDE

Ursula

Transmitter for Mac and Windows computers with USB A-Type ports



Works With

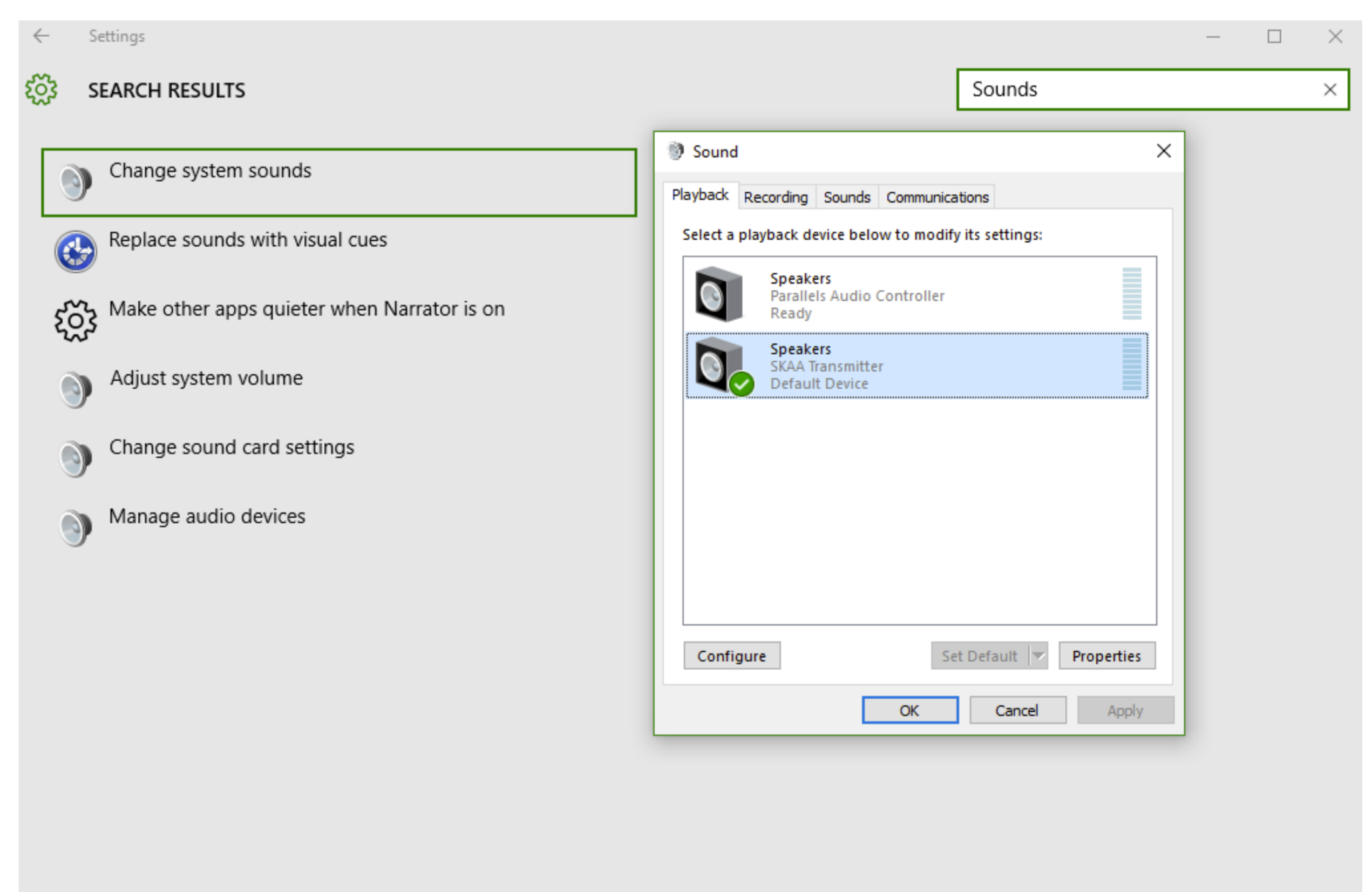
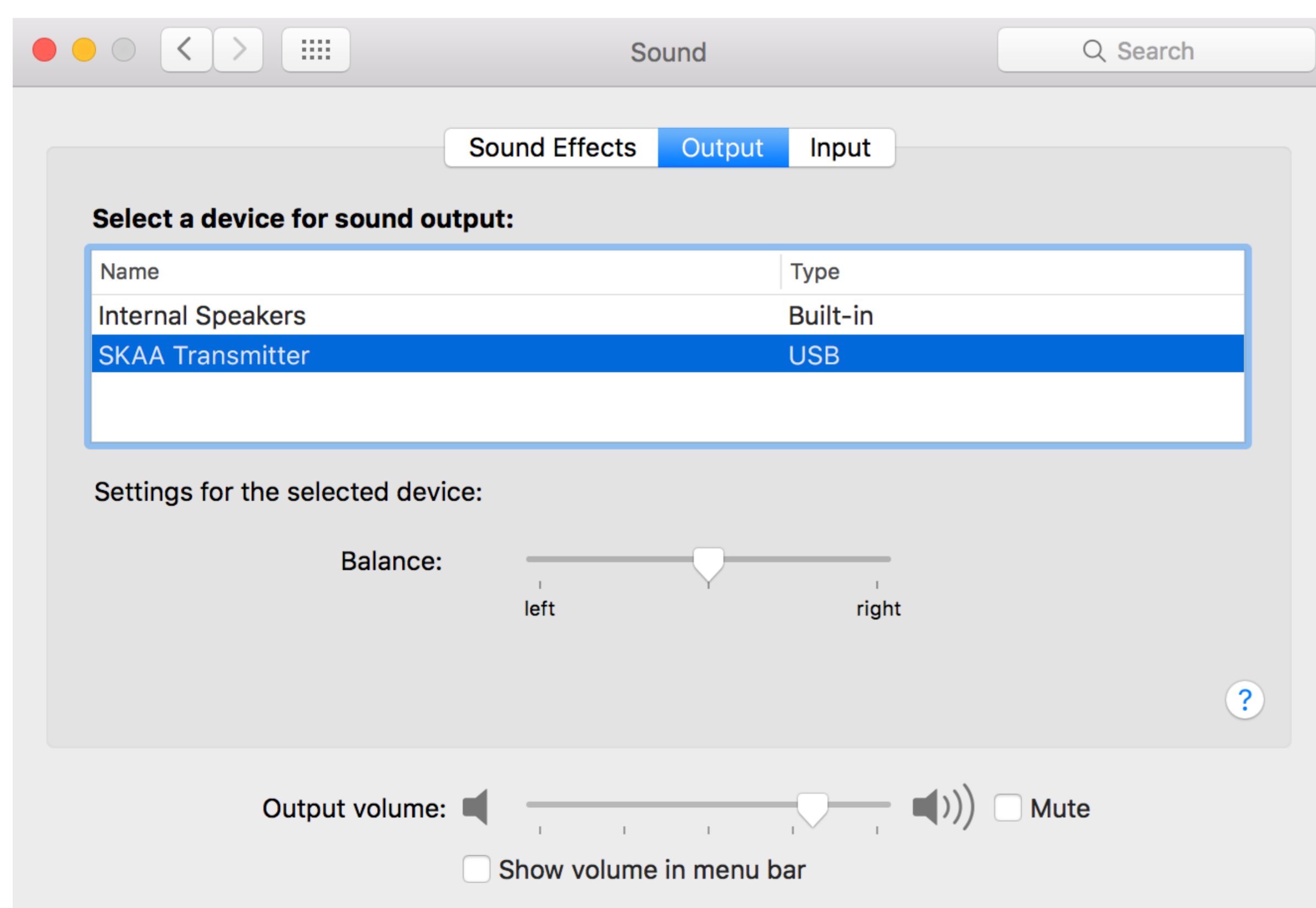
- Mac and Windows computers

Requirements

- Mac OS X 10.8 and later
- Windows 7 and later

Notes

- When using Ursula for the first time, you will have to adjust your computer's audio output settings.



Eleven Engineering Inc.

Suite 800, 10150 - 100 street
Edmonton, AB., Canada T5J 0P6

T. [780] 425.6511 F. [780] 425.7006

www.elevenengineering.com www.skaa.com

060618

Page 5



Akiko

Transmitter for analog audio



Works With

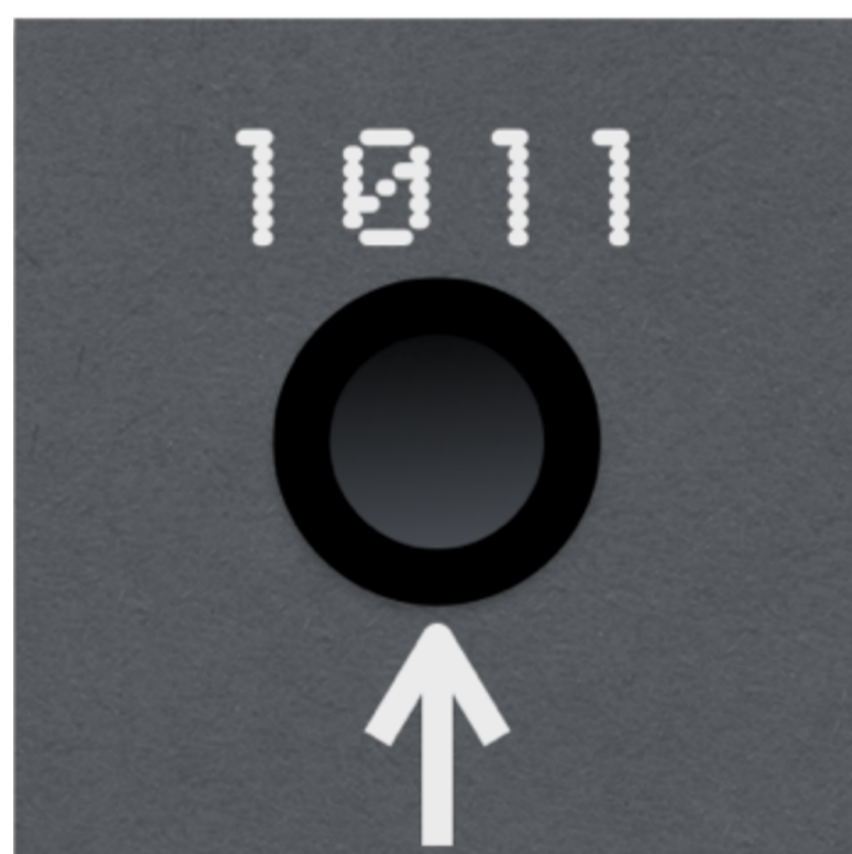
- Devices with a 3.5 mm analog jack (sometimes referred to as an AUX ports).

Requirements

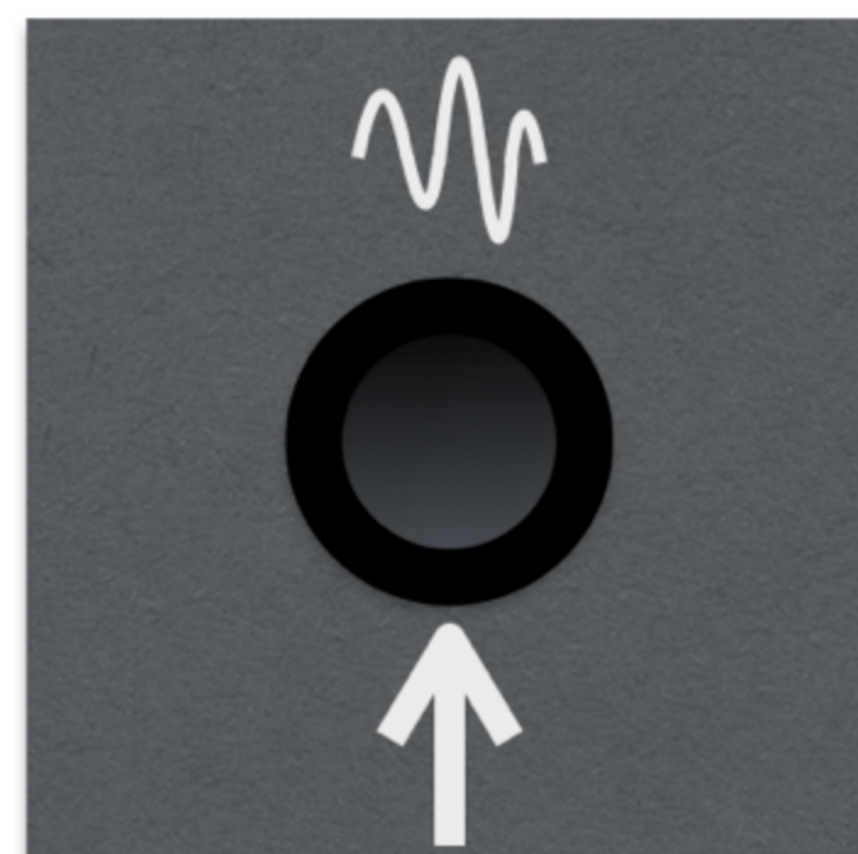
- The device must support analog audio out

Notes

- The Akiko transmitter and the Talisa transmitter are very similar, however they can be distinguished by a small symbol just above their input receptacles.
- See page 8 for details on the IR learning feature.



Talisa



Akiko

Talisa

Transmitter for digital audio



Works With

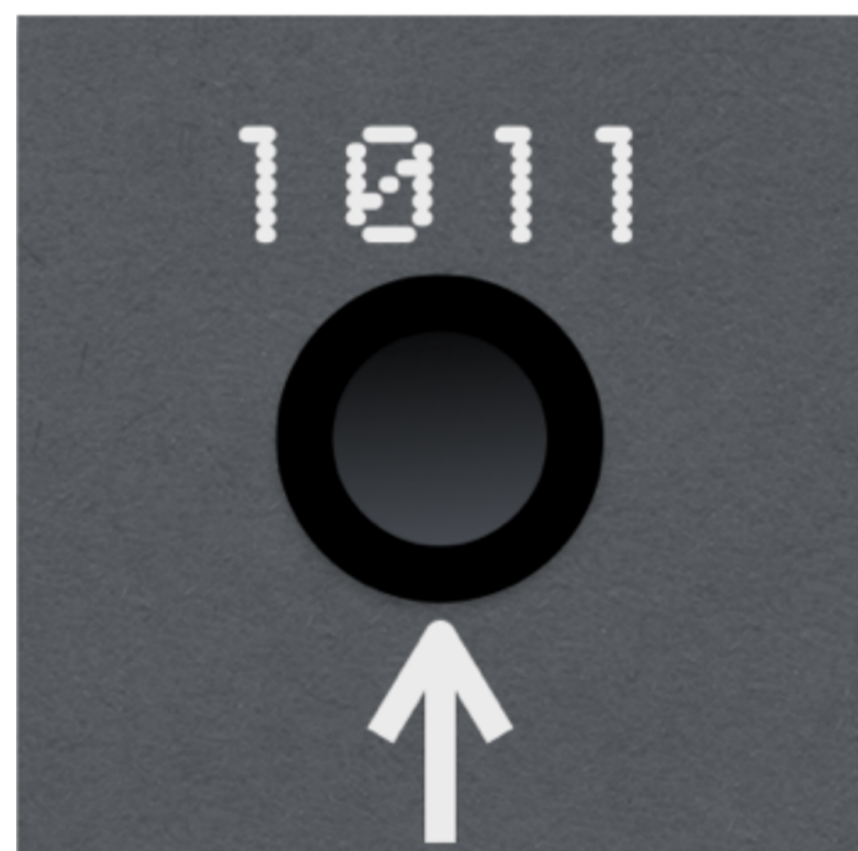
- TVs, DVD and Blu-ray players that support TOSLINK or S/PDIF

Requirements

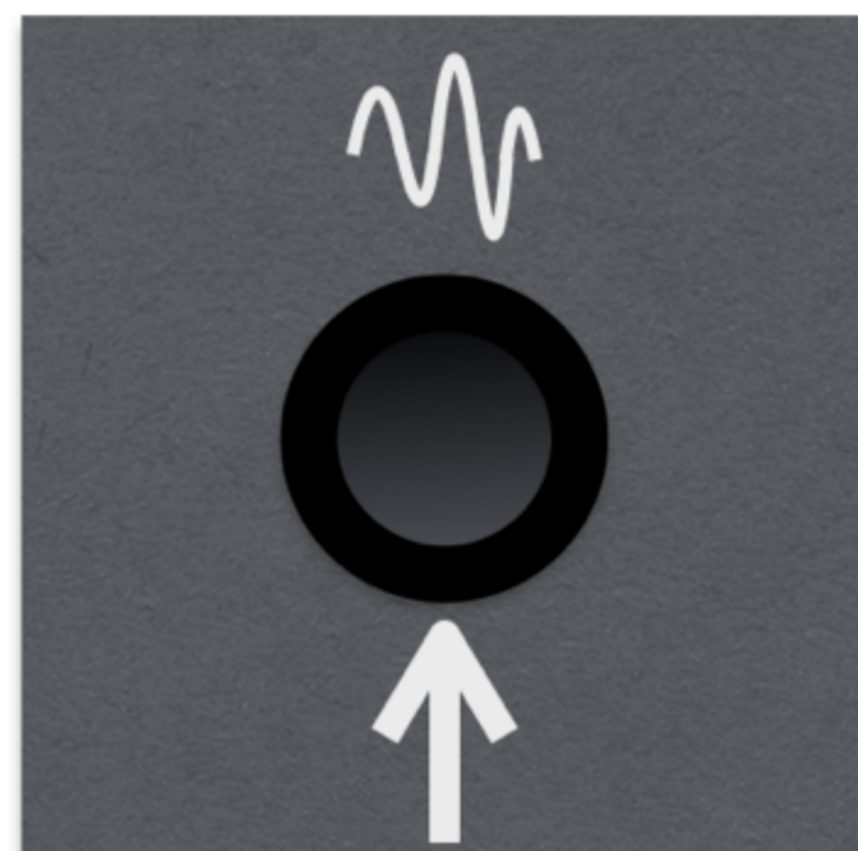
- Talisa is equipped with a 3.5 mm jack that works with any 3.5 mm plug carrying a TOSLINK or S/PDIF signal.

Notes

- The Talisa transmitter and the Akiko transmitter are very similar, however they can be distinguished by a small symbol just above their input receptacles.
- See page 8 for details on the IR learning feature.



Talisa



Akiko

Did you know you can reuse your existing RCA cable with Talisa?



Simply plug the left channel cable (white) into the COAX/ electrical output on your TV, leaving the right channel (red) unconnected. Then, plug the 3.5 mm end of the RCA cable into the input jack on Talisa.

IR Learning

Control volume on Akiko and/or Talisa using your existing remote

Akiko and Talisa offer a feature called IR learning. This feature allows you to *teach* your transmitter to use your existing TV remote to adjust the volume on your SKAA speakers.

To setup IR Learning with your existing remote:

- Plug your transmitter into a USB port, for power. (Make sure nothing is plugged into the transmitter's jack during this stage.)
- Within 14 seconds of plugging the transmitter into a USB power source, press the Volume (+) button, on your desired remote, while aiming it at the IR sensor on the transmitter. A brief flash of the transmitter's LED will indicate that it has received the Volume (+) signal from the remote.
- Next, press the Volume (-) button, on your remote. Another brief flash of the LED will indicate that the transmitter has received the Volume (-) signal, from the remote
- Finally, press the Mute button on your remote. If successful, the transmitter's LED will turn on for two seconds to indicate that it has successfully *learned* which volume buttons you will be using on your desired remote.
- Plug your audio cable into your transmitter's jack. You may begin using your remote with your transmitter. If any errors were detected, during the IR learning process, the LED will blink rapidly, four consecutive times. In this case, unplug the transmitter from the USB power source and restart the IR learning process.
- To *Unlearn* a remote control, simply press any button on the remote, twice, during any of the steps, listed above. Four, rapid, consecutive flashes of the LED indicate a successful *Unlearn*.

