

Quality Furniture  
*Handmade in*  
**Great Britain**

Painted Classic  
*Barley Collection*  
Oak Collection







We are proud to introduce the Painted Oak collection – a high quality and comprehensive selection of pieces hand made with care and attention to detail by skilled craftsmen in our factory in Great Britain. On the following pages you will be able to choose the pieces that best suit your home and décor. Each has been made from sustainable materials which have been responsibly sourced. The timber used has been selected with care in order to give the best possible appearance and finish.

Throughout the collection you will see the detail of the mouldings and profiles that have been added to give elegance and character to each piece. Drawers have been fitted with high quality soft close mechanisms. Cabinets have been fitted with height adjustable shelving to maximise storage and display potential.

The table and cabinet top surfaces have been made using American White Oak. This has been selected for it's beautiful grain pattern and consistent colour.

If you don't see exactly what you are looking for then let us adapt a piece or make something special and individual for you. We offer a complete bespoke making service which is explained in more detail on page eleven.





## Inspired by nature

Have you ever noticed the veins of a leaf backlit?

The wonder of its design recalls the harmonious wisdom of nature that seems to effortlessly combine beauty and functionality.

Often in the decoration of the home, aesthetics can be sacrificed for functionality. However, we believe it is possible to achieve the perfect combination of both.

We thrive on good design. To us, this not only means sourcing the finest raw materials for our craftsmen to work with and utilising the best traditional carpentry techniques; it is making beautiful, yet functional furniture for an affordable price.

We have a passionate team of individuals who are committed to this simple ideal.

We make sure every detail and every material reflects our commitment to quality, design and affordability. We work hard to make each piece look stunning, last a lifetime and not cost the earth.







## Attention to detail

Starting with the best responsibly sourced natural materials, our craftsmen take pride in turning a raw piece of timber into something intricate, complex, practical and beautiful.

We believe that choosing the best available resources gives us the platform to design and make the best furniture. We work hard to ensure that the selection and quality of every material we use and our close attention to detail mean we are able to remain committed to producing superbly designed, quality furniture.

Only the highest grade timbers are used in all stages of the manufacturing process making it practical and pleasurable to work with. From the processing of the raw wood into components, through to the cabinet making and finishing, our choice of materials allows us to make your furniture with the minimum amount of waste while making it strong and durable yet beautiful and stylish.

Cabinet tops are made using solid American white Oak. The timber is sourced from well managed forests in North America and Canada and is a renewable and sustainable resource. It is a faster growing timber than its European cousin, giving it a beautiful, wide grain pattern and a more consistent colour, perfect for the job.

Elsewhere, we use Tulipwood, another North American hardwood from renewable and sustainable sources. Although characterless in its raw state, this timber has a very bland grain pattern and is incredibly stable, making it the ideal choice to achieve the smooth finish for the Barley Collection.







## Hand made by craftsmen

To make the most of the high quality timbers, our standards require exceptional craftsmanship; accurate joinery, clever construction and beautiful finishing.

Each and every door and drawer is individually fitted into the cabinet, planed and accurately sanded in so they fit perfectly and run smoothly. The drawers are also fitted with soft close runners, making them even easier to use and underlining the quality throughout the range.

The oak tops are finished in a clear matt lacquer to enhance and protect the beauty of the oak timber. The coloured carcasses are finished with a paint and lacquer combination which gives a solid colour and a beautifully smooth yet durable finish.

Each piece can be finished in any of our 4 standard colours and fitted with your choice of eight elegant handles from our standard range. Also, the chairs are available in a choice of eleven stylish fabrics to suit every palette.

Nothing that takes your fancy? We can match the colour to existing furniture, fit your own handle or use a fabric of your choice.





## Fancy something different?

*Then set your imagination free.*

There has been a tendency over recent years for the furniture market to be dominated by products manufactured in other countries, particularly the far east. Often this means that there is very little flexibility when choosing the right furniture for your home. We believe that it is important to be able to offer something different from just standard products. Although you can choose from the models laid out in this brochure, we believe that you should be able to tailor your furniture to exactly meet your specific style, colour or size. For this reason we offer you a selection of colours, handles and fabrics as standard.

In addition we encourage you to choose your own colour to perfectly match your home. Your new dining chairs can be upholstered in your own fabric too and we are always pleased to fit your own handles to your new cabinets should you wish us to do so.

Standard sizes don't work? Then let us adapt a piece to fit. Simple size modifications are usually very straight-forward and probably won't cost as much as you might think.

Need something made to your own specification? Let our skilled craftsmen make it for you. We manufacture many customer commissioned pieces every year. Tell us what you want and let us work it out for you. You will not be disappointed.





Our Barley Collection celebrates the beauty of oak by reflecting the life of the tree in each individual piece. We go through a careful finishing process to preserve the character of the timber, so whether you need a family kitchen centrepiece or to fill an elegant dining room, we have a unique table that is perfect for you.

The Barley Collection dining tables look just as at home hosting a banquet as an intimate family gathering. The designs are a balance of classical proportions and refined craftsmanship that combine a reassuring solidity with an elegant delicacy. The oak tops are finished in a clear matt lacquer, but can also be finished in any of our oak finishes.

**BV702 Fixed Top Table**  
63" x 37 1/2" x 30 1/2" (160cm x 95cm x 77cm)

*Other sizes available*

**BV701 Fixed Top Table**  
47" x 33 1/2" x 30 1/2" (120cm x 85cm x 77cm)

**BV703 Fixed Top Table**  
79" x 39" x 30 1/2" (200cm x 100cm x 77cm)

*Special sizes available by request*







**BY707 Extending Table**  
47" / 71" x 33 1/2" x 30 1/2" (120 / 180cm x 85cm x 77cm)

*Other sizes available*

**BY708 Extending Table**  
63" / 86 1/2" x 37 1/2" x 30 1/2" (160 / 220cm x 95cm x 77cm)

**BY709 Extending Table**  
79" / 102" x 39" x 30 1/2" (200 / 260cm x 100cm x 77cm)

*Special sizes available by request*





### Your chairs, your choice

We have eleven stylish fabrics to suit every taste. However, the customer can supply their own and we will upholster your chairs in the fabric of your choice.



**BV797 Loom Chair**  
19 1/2" x 23" x 37"  
(50cm x 58cm x 94cm)



**BV798 Ladderback Chair**  
20" x 20" x 42"  
(51cm x 51cm x 107cm)



**BV799 Upholstered Chair**  
20" x 24" x 38 1/2"  
(51cm x 61cm x 98cm)







The Painted Classic Oak Collection Sideboards are designed in an elegant yet simple, sophisticated style. They have sturdy frames and clean lines, coupled with a beautiful seasoned solid oak top.

They come fitted with soft close drawer mechanisms and a half-depth shelf to facilitate flexible storage.

Should you prefer, you can specify a full depth shelf to be fitted to your sideboard.

To ensure that you enjoy your purchase for many years to come, we are sticklers for detail and all of our cabinets go through a stringent finishing process before leaving our workshop.

*above*  
**BY717 5' Sideboard**  
60" x 18" x 34 1/2" (152cm x 46cm x 88cm)







**BY719 4' Sideboard**  
48" x 18" x 34 1/2" (122cm x 46cm x 88cm)



**BY739 3' Sideboard**  
36" x 18" x 34 1/2" (92cm x 46cm x 88cm)







The shelves inside the Dresser tops can easily be adjusted for height, giving you the perfect display opportunities.

If you prefer, we can fit glass shelves and lighting at a modest additional cost.

*Above left*

**BY784 3' Open Dresser Top**  
38" x 14" x 44" (97cm x 36cm x 112cm)  
*Shown with BY739 Sideboard*

*Right*

**BY786 4' Open Dresser Top**  
50" x 14" x 44" (127cm x 36cm x 112cm)  
*Shown with BY719 Sideboard*

*Opposite Page*

**BY785 3' Glazed Dresser Top**  
38" x 14" x 44" (97cm x 36cm x 112cm)  
*Shown with BY739 Sideboard*







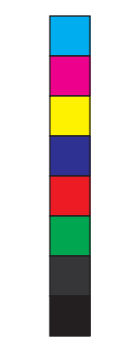
**BY789 5' Glazed Dresser Top**  
61 1/2" x 14" x 44"  
(156cm x 36cm x 112cm)  
*Shown with BY717 Sideboard*

*Opposite Page*

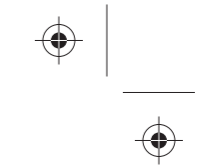
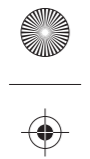
**BY788 5' Open Dresser Top**  
61 1/2" x 14" x 44"  
(156cm x 36cm x 112cm)  
*Shown with BY717 Sideboard*



**BY787 4' Glazed Dresser Top**  
50" x 14" x 44"  
(127cm x 36cm x 112cm)  
*Shown with BY719 Sideboard*







*Above*  
**BY776 Narrow Glazed Bookcase**  
29" x 15" x 79" (74cm x 38cm x 201cm)

*Above right*  
**BY779 Narrow Bookcase**  
29" x 15" x 79" (74cm x 38cm x 201cm)

*Bottom right*  
**BY781 Narrow Open Bookcase**  
29" x 15" x 79" (74cm x 38cm x 201cm)



*Above left*  
**BY775 Wide Glazed Bookcase**  
38 1/2" x 15" x 79" (98cm x 38cm x 201cm)

*Above right*  
**BY777 Wide Bookcase**  
38 1/2" x 15" x 79" (98cm x 38cm x 201cm)

*Left*  
**BY782 Wide Open Bookcase**  
38 1/2" x 15" x 79" (98cm x 38cm x 201cm)







Combining classical proportions and elegant design with the best raw materials to create something both practical and pleasing to the eye is a challenge our designers and craftsmen relish. This is very much in evidence in the fine work they have done on creating this range of practical furniture for living.

Entertainment units, coffee tables, corner cabinets, storage cupboards and hall tables are all here to help you make your room feel warm and inviting while still being cool and sophisticated. The possibilities are endless; Living room or dining room, we can make any piece to suit your home perfectly.







Above  
**BY723 Console Table**  
40" x 16" x 30 1/2" (102cm x 41cm x 77cm)  
Opposite page top  
**BY713 Nest of Tables**  
24" x 14" x 18 1/2" (61cm x 36cm x 47cm)  
Opposite page bottom  
**BY733 Lamp Table**  
20" x 20" x 18" (51cm x 51cm x 46cm)





*Above Left*  
**BY794 Corner Cabinet** (glazed top door)  
25 1/2" across the front x 19 1/2" along the wall x 79" high (65cm x 49cm x 200cm)

*Above Right*  
**BY794 Corner Cabinet**  
25 1/2" across the front x 19 1/2" along the wall x 79" high (65cm x 49cm x 200cm)

*Opposite page top*  
**BY767 Coffee Table**  
40" x 20" x 18" (102cm x 51cm x 46cm)

*Opposite page bottom*  
**BY742 Cupboard**  
26" x 15" x 34 1/2" (66cm x 38cm x 88cm)





For wine lovers, we have these beautiful cabinets that will be at home in any kitchen or dining room. Both cabinets hold up to twenty bottles. The shorter version has a drawer for all the necessary bottle openers and accessories and it is finished with a gorgeous oak top. The taller version, also includes a storage drawer and integrates an open display top with adjustable shelving, perfect for creating a decorative display to suit your room.

*Above left*  
**BY745 Wine Rack**  
27 1/2" x 15" x 34 1/2" (70cm x 38cm x 88cm)

*Above right*  
**BY746 Wine Rack**  
29" x 15" x 79" (74cm x 38cm x 201cm)







The Barley Collection Home Entertainment Units have stylish and elegant designs with features such as height adjustable shelves and clever and practical storage solutions.



**BY750 Entertainment Unit**  
53 1/2" x 17" x 24 1/2" (136cm x 43cm x 62cm)



**BY748 Entertainment Unit**  
36" x 18" x 25" (92cm x 46cm x 64cm)



**BY749 Corner Entertainment Unit**  
36" x 18" x 25" (92cm x 46cm x 64cm)









<b>Classic UK made Painted Oak Collection Pricelist - 1st May 2022</b>		
<b>Model no.</b>	<b>Description</b>	<b>Retail £</b>
<b><u>Dining Tables</u></b>		
BY701	Fixed Top table - 120cm x 85cm x 76cm	1096
BY702	Fixed Top table - 160cm x 95cm x 76cm	1404
BY703	Fixed Top table - 200cm x 100cm x 76cm	1869
BY707	Extending table - 120/180cm x 85cm x 76cm	1843
BY708	Extending table - 160/213cm x 95cm x 76cm	2260
BY709	Extending table - 200/260cm x 100cm x 76cm	2532
BY711	42" dia. Fixed Top, Pedestal Table	1447
BY712	42" dia./57" Extending, Pedestal Dining Table	1886
BY715	48" dia. Fixed Top, Pedestal Table	1768
BY716	48" dia./63" Extending, Pedestal Dining Table	2258
BY770	Fixed top table - ANY SIZE (Price per square foot)	137
BY771	Extending table - ANY SIZE (Price per square foot)	156
<b><u>Dining Chairs</u></b>		
BY798	Ladderback Chair	307
BY797	Loom Chair	367
BY799	Upholstered Chair - Limited range of fabrics	532
<b><u>Sideboards</u></b>		
BY739	3' Sideboard	1423
BY719	4' Sideboard	1886
BY720	5' Sideboard - 3 door/3 drawers above	2320
BY721	5' Sideboard - 2 door with open centre/3 drawers above	2294
<b><u>Dresser Tops</u></b>		
BY784	3' Open Dresser	883
BY785	3' Dresser with doors	1154
BY786	4' Open Dresser	1116
BY787	4' Dresser with doors	1404
BY788	5' Open Dresser	1344
BY789	5' Dresser with doors	1694
<b><u>Bookcases</u></b>		
BY776	27" Wide Glazed Bookcase	1620
BY779	27" Wide Open Bookcase with Bottom Door	1305
BY781	27" Wide Open Bookcase	1075
BY775	36" Wide Glazed Bookcase	1843
BY777	36" Wide Open Bookcase with Bottom Door	1495
BY782	36" Wide Open Bookcase	1269
<b><u>Occasional</u></b>		
BY713	Nest of Tables	749
BY724	Console Table	1161
BY728	Occasional Table	662
BY733	Lamp Table	564
BY742	Cupboard	1101
BY767	Coffee Table	1024
BY794	Corner Cabinet - glazed top door	1560
BY795	Corner Cabinet - open top	1310
<b><u>Wine Racks</u></b>		
BY745	Low wine rack	1308
<b><u>Entertainment</u></b>		
BY748	36" Wide Entertainment Unit	1389
BY749	Corner Entertainment Unit	1524
BY750	54" Entertainment Unit	1622

**Finishes All standard colours are charged at the same price, for special colours +10%**