



PRODUCT DATA SHEET

MAUI BLACK

DIRECTIONS

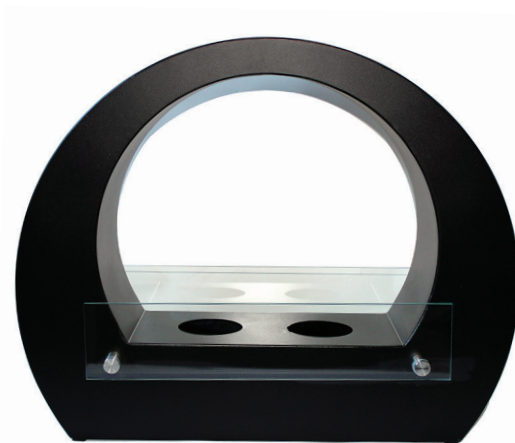
Minimal assembly required.
For complete instructional videos,
please visit www.Jellyfish-Flame.com.
Before use please read product and
label completely.
JellyFish Fuel-Gel and vapors are
flammable
Use extreme care with any fire product.
DO NOT SMOKE near fuel gel.
Never leave burning gel unattended
Never leave burning get around
children or pets.
Wait at least 20-30 minutes before
moving can after it has been
extinguished.
In case of emergency use CO2
extinguisher, or baking soda to
extinguish flame.
DO NOT DOUSE WITH WATER

SPECS

Dimensions
Length x Width x Depth
25 x 20 x 7 in.
Weight - 33 lbs.



ABOUT



Give your family and friends a taste of the islands of Hawaii, as you transport them with a serene ambience, and beautiful iridescent light. Black Maui is a modern circular design, that compliments most modern furnishings and decor. The ultra modern Black Maui provides an exclusive sense of style to any indoor or outdoor area. This fireplace is a perfect solution for individuals seeking warmth and sophistication. Jellyfish Flame's Maui fixture is available in both black and white finishing.



JellyFish FLAME.COM