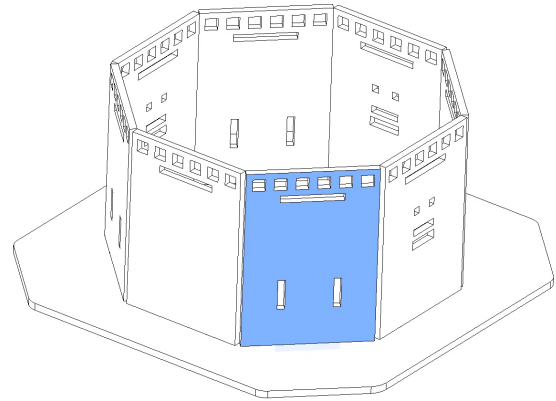
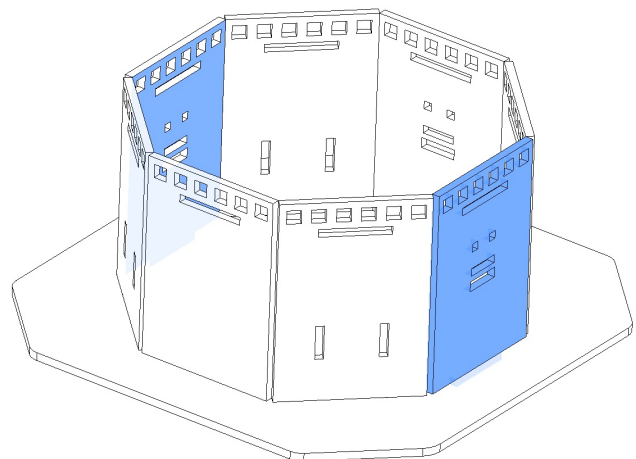


Assemble Walls

Glue walls together as shown, use the base as a guide (but don't glue down)

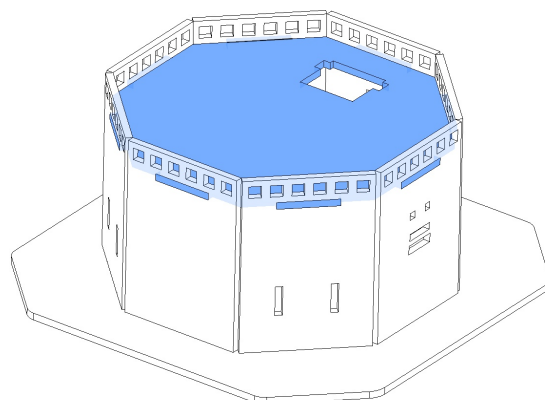


Note the wall positions carefully!

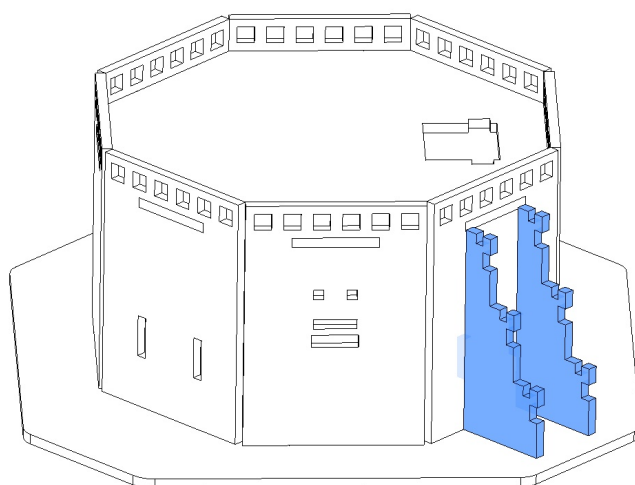


Assemble Walls cont.

Glue roof to the walls

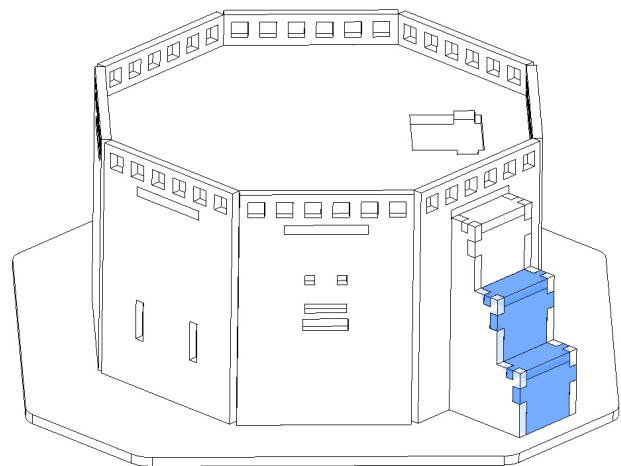
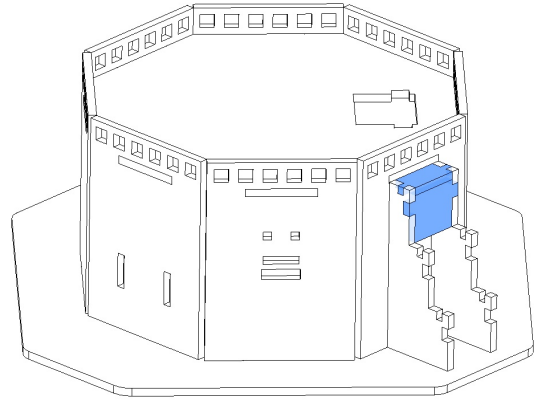


Glue on corner panels as shown



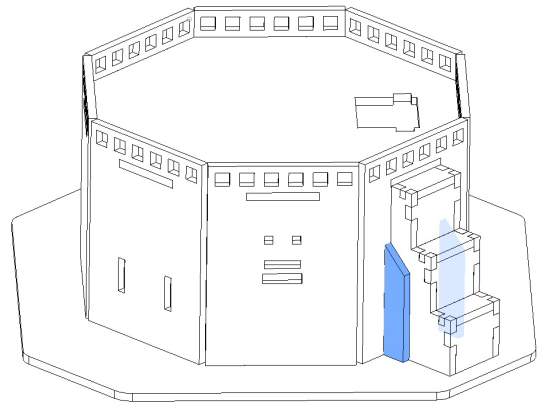
Assemble Details

Glue panels to corner supports

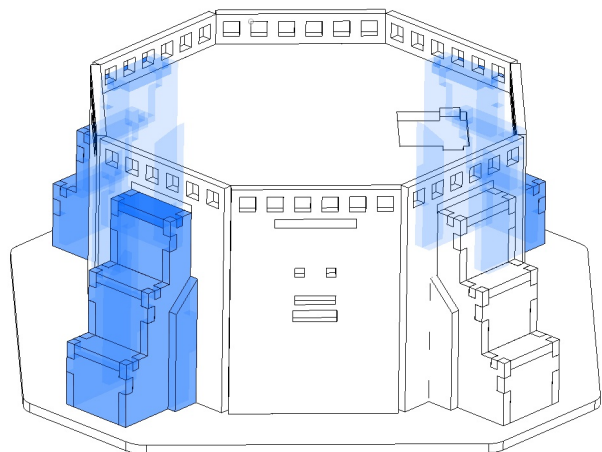


Assemble Details cont.

Glue corner details as shown (both sides)

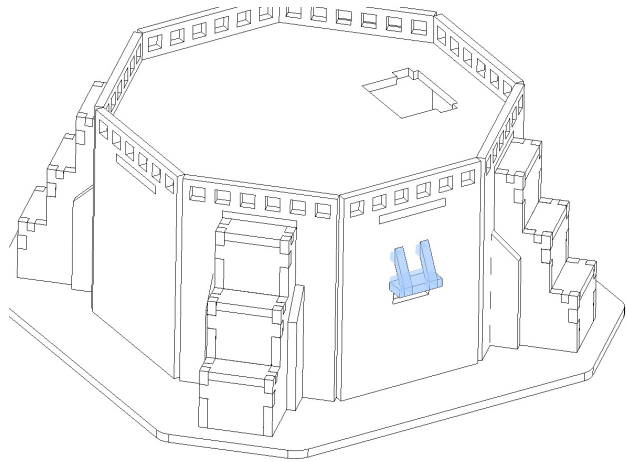


Repeat assembly on each corner

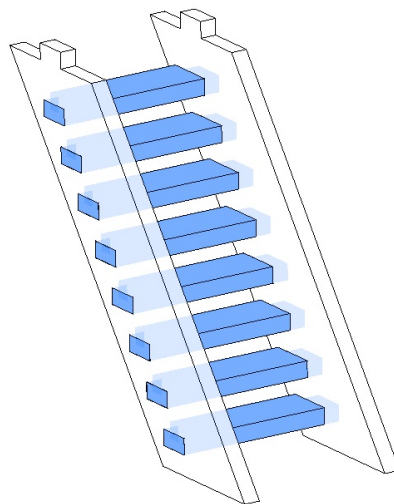


Assemble Details cont.

Glue window details in, repeat for all sides

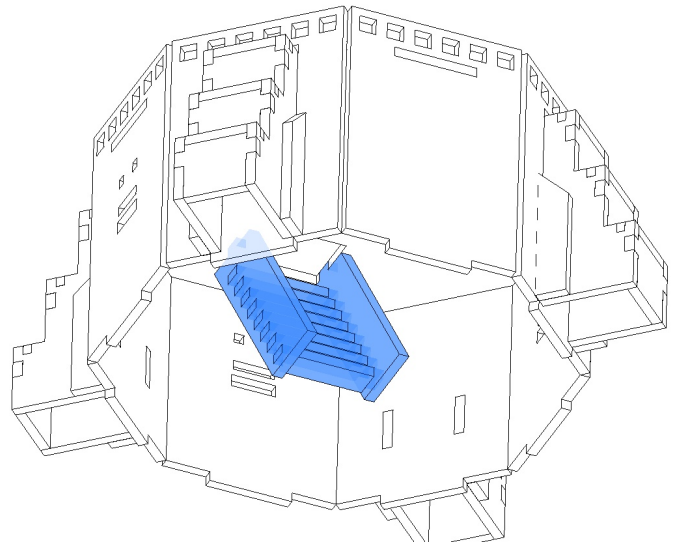


Glue staircase together

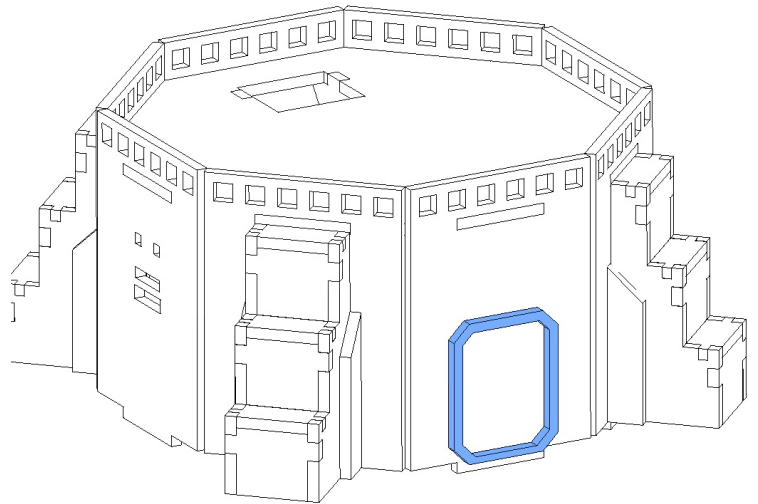


Assemble Details cont.

Glue stairs to underside of roof



Glue door frame



Assemble Details cont.

Glue building to base if you wish

