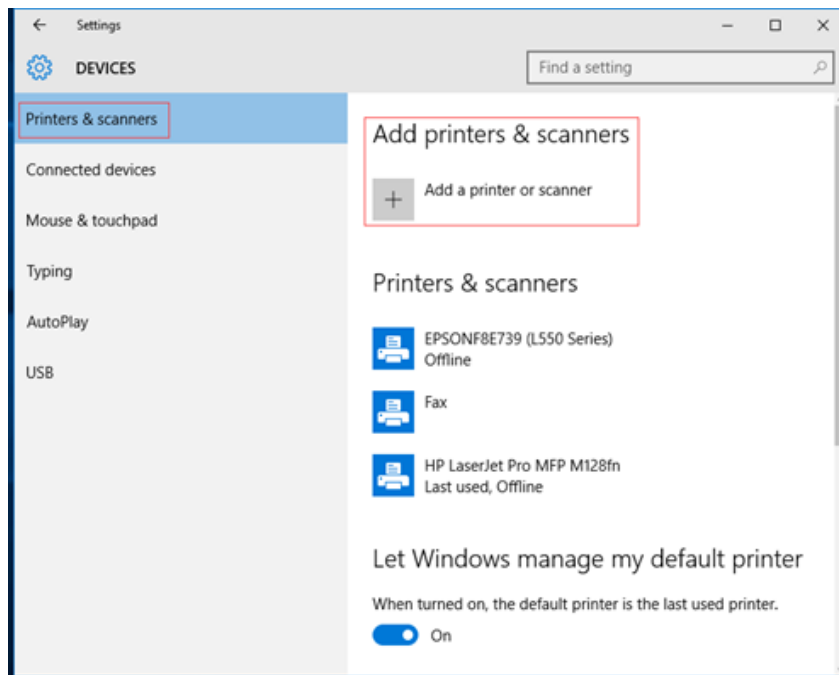


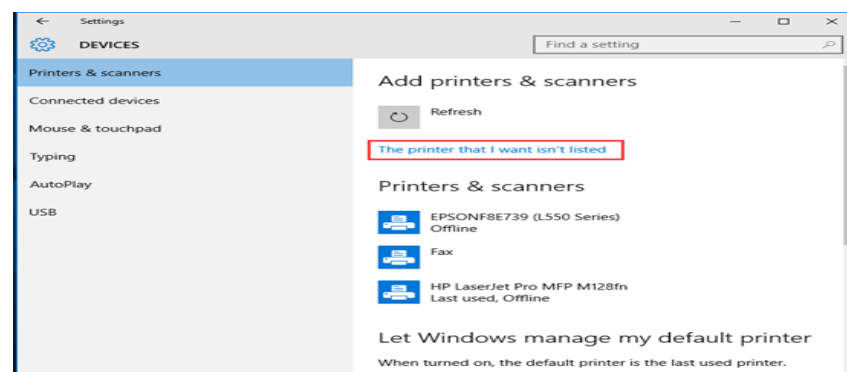
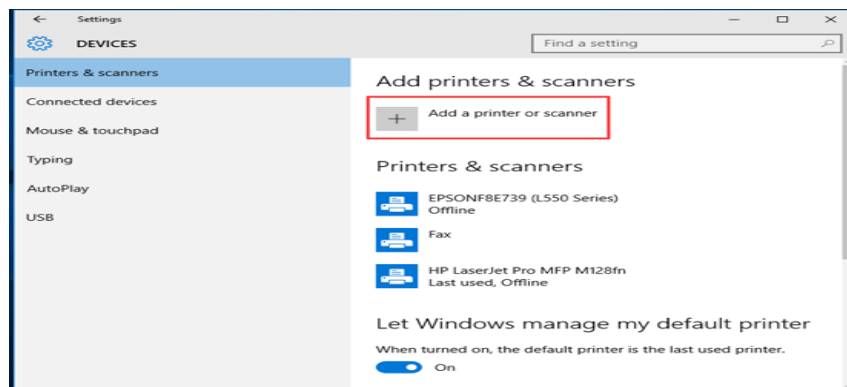
Adding methods of driver installation step

There would be some problems when some computers are installing the Drivers. For instance, the Driver's icon cannot be found in the tab of "Devices and Printers" after finishing the installation. In this case, the printer could be added to the computer through the following methods.

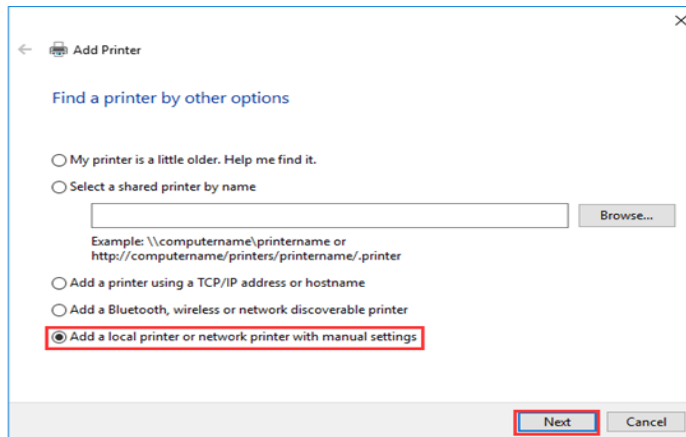
1、Take Win10 32 bit system as an example. Enter into "Control Panel" of the computer and open the "Devices and Printers", as shown in the following picture.



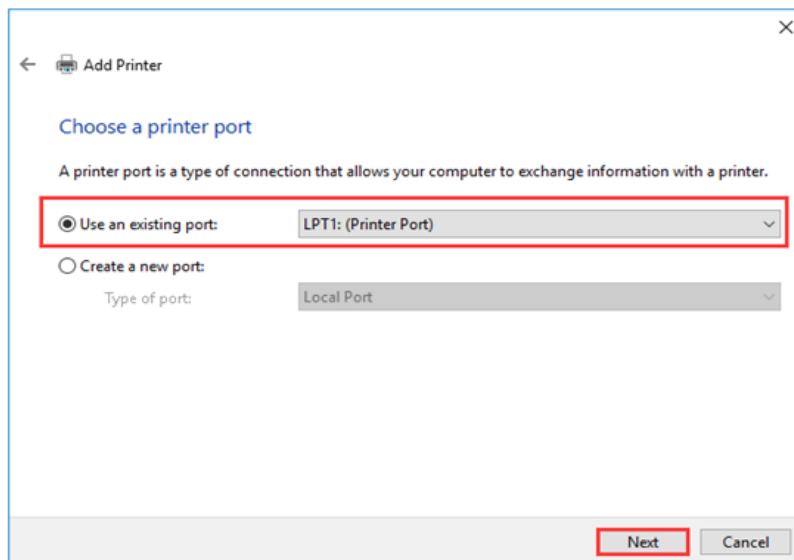
2、Click "Add Printer" button and then select "Add a local printer". Choose "Next Step", See the picture as below:



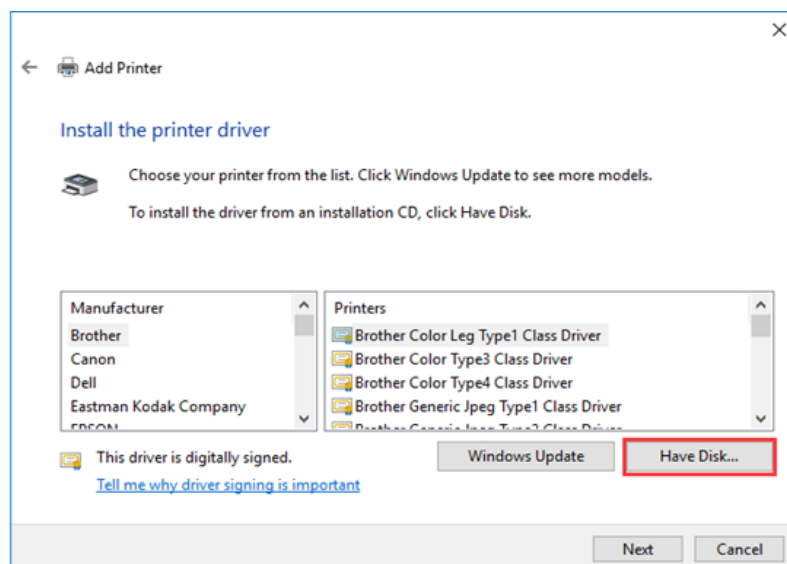
Choose to add a local printer by hand , "Next Step".



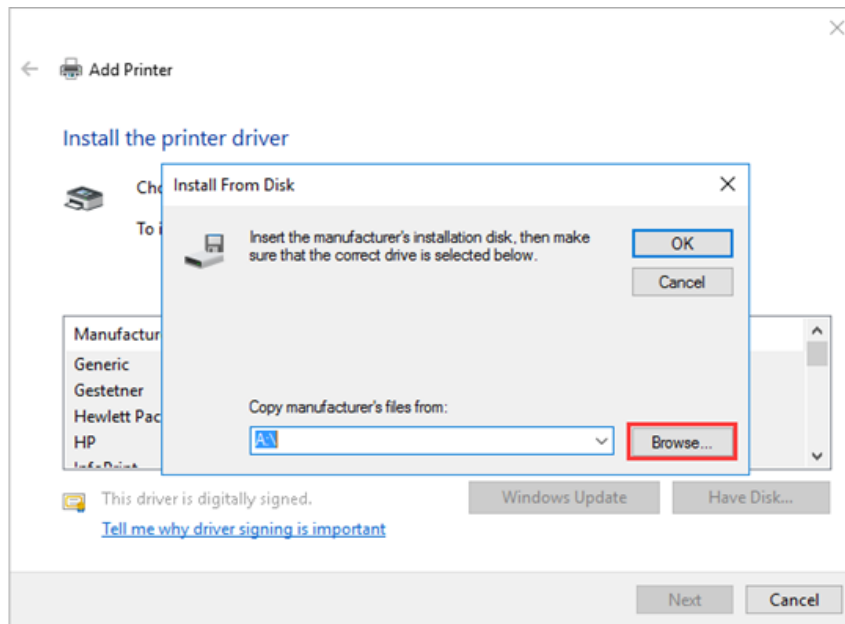
3、 Default LPT port, Choose “Next Step”, see below:



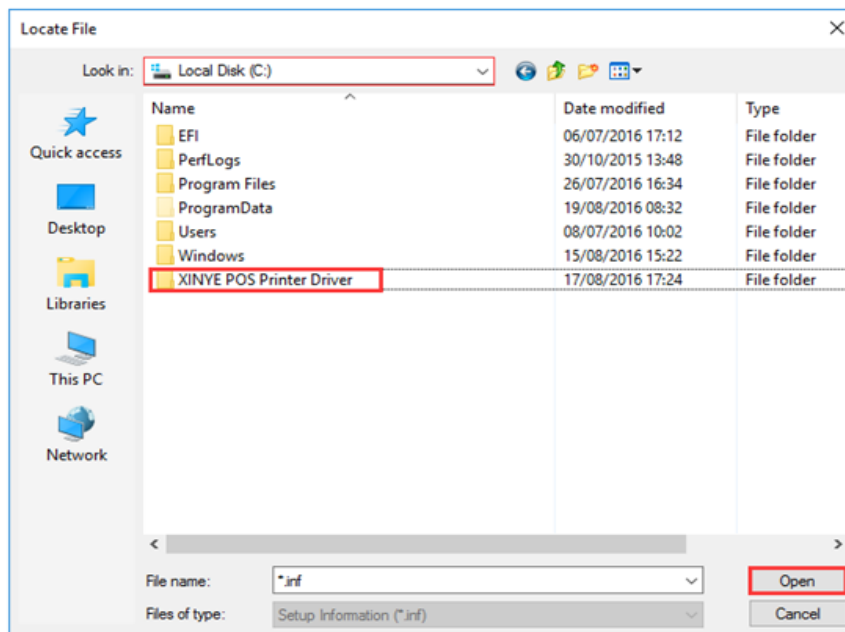
4、 Choose “Have Disk...” to install. See the picture below:



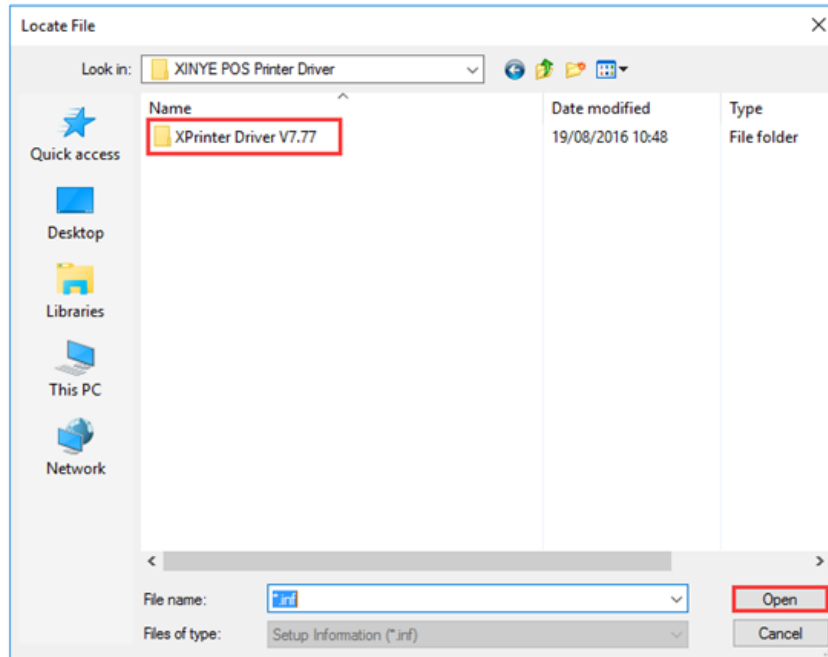
5、 Choose “Browse...” as picture below:



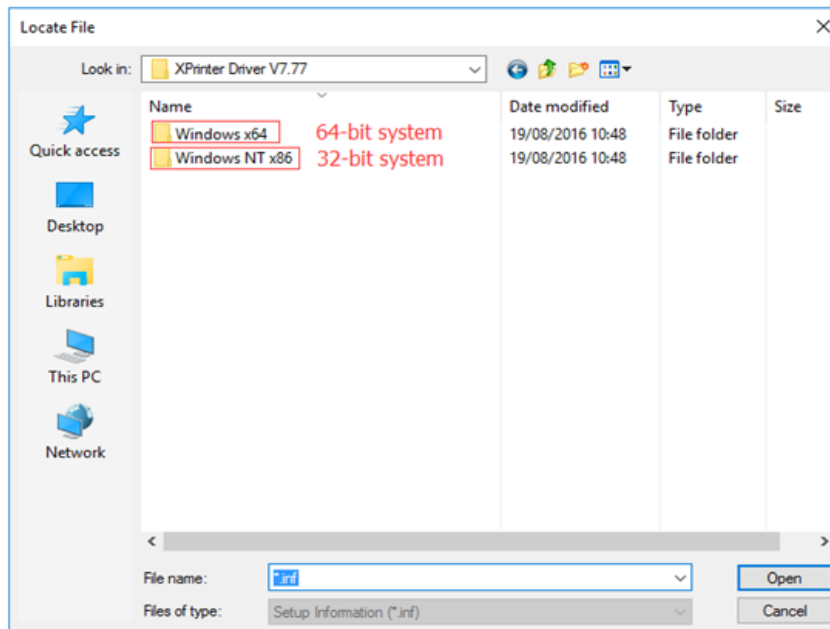
6、 Browse to the installation location. Default to the root directory of disk C. Choose “XINYE POS Printer Driver”, Click “Open” button. See picture below:



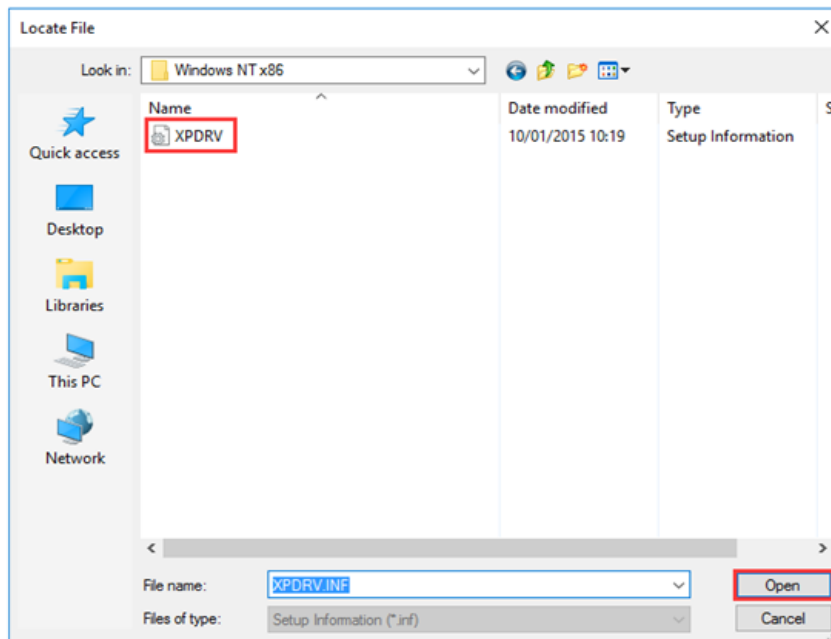
7、 Choose “XP80 Driver V7.77” and then click the “Open” button again. See picture below:



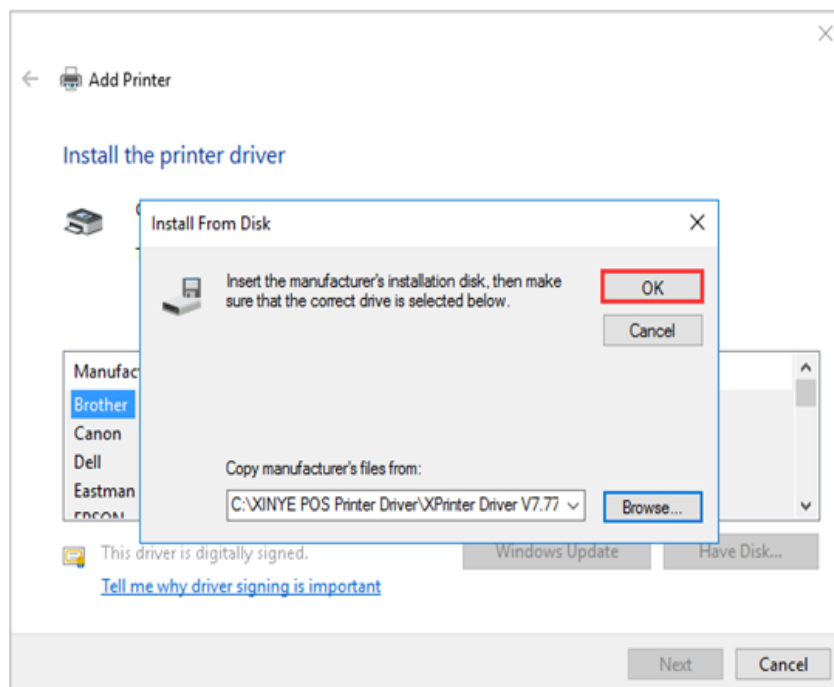
8、 Choose the folder of “32 bit” or “64 bit” according to the corresponding computer operating system, and click the “Open” button again. See picture below:



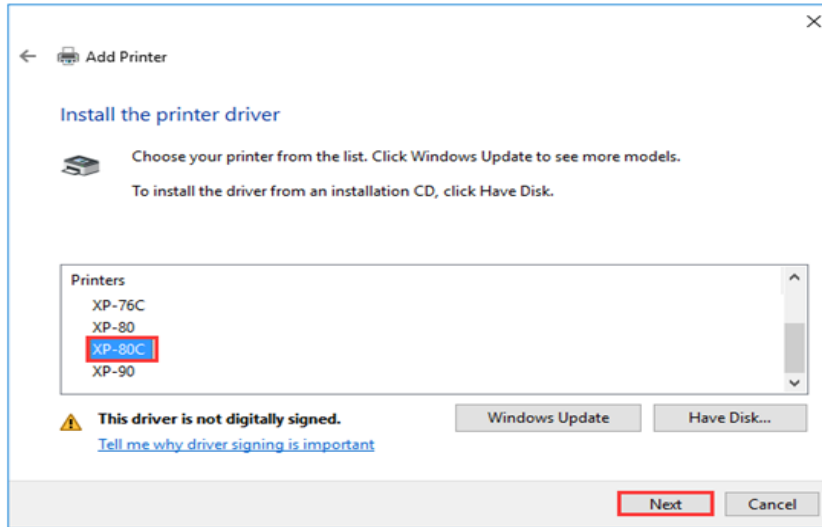
9、 Choose the “inf” file as shown in the following picture.



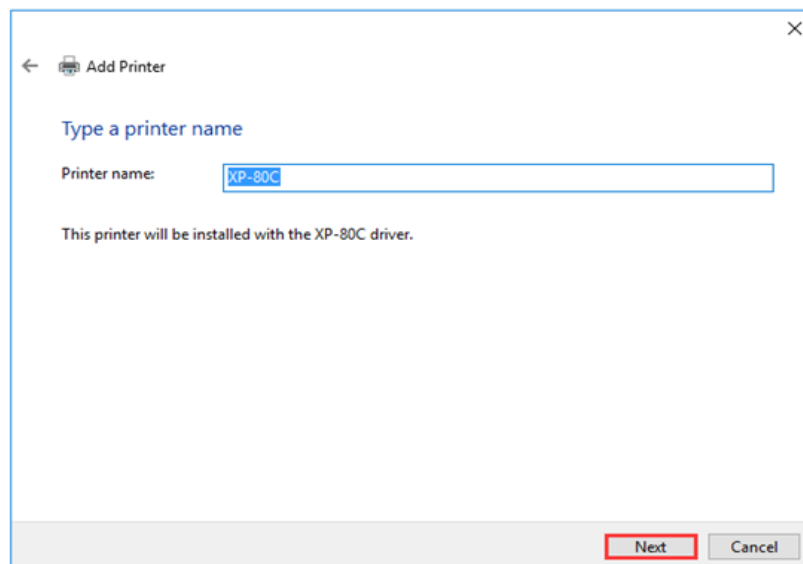
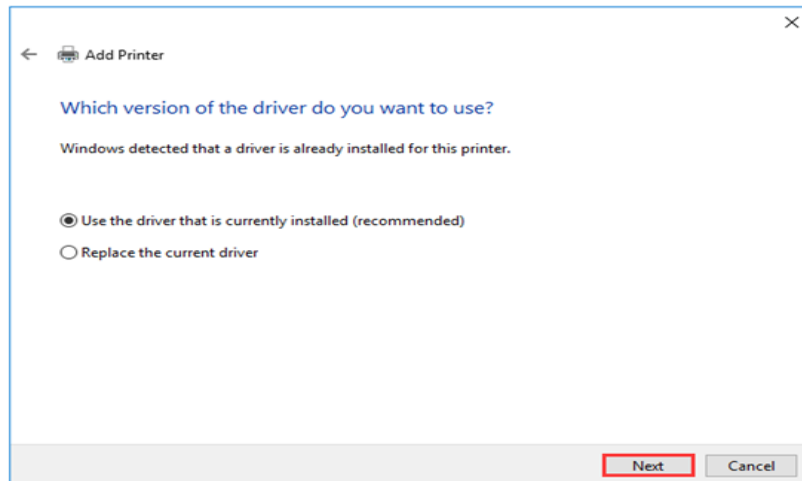
10、 Click the “Ok” button as shown in the following picture.



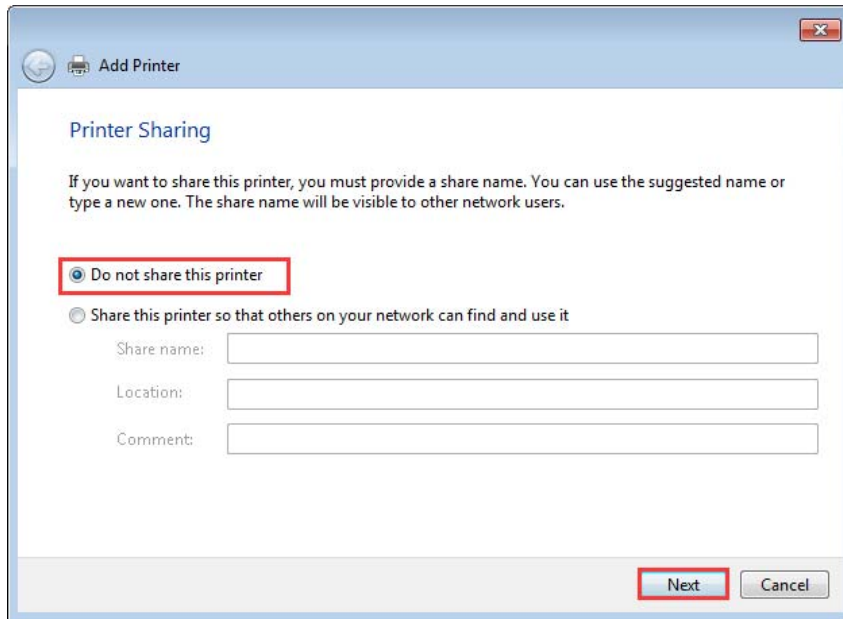
11、 Select corresponding Printer Driver, and click “Next” button. See picture below:



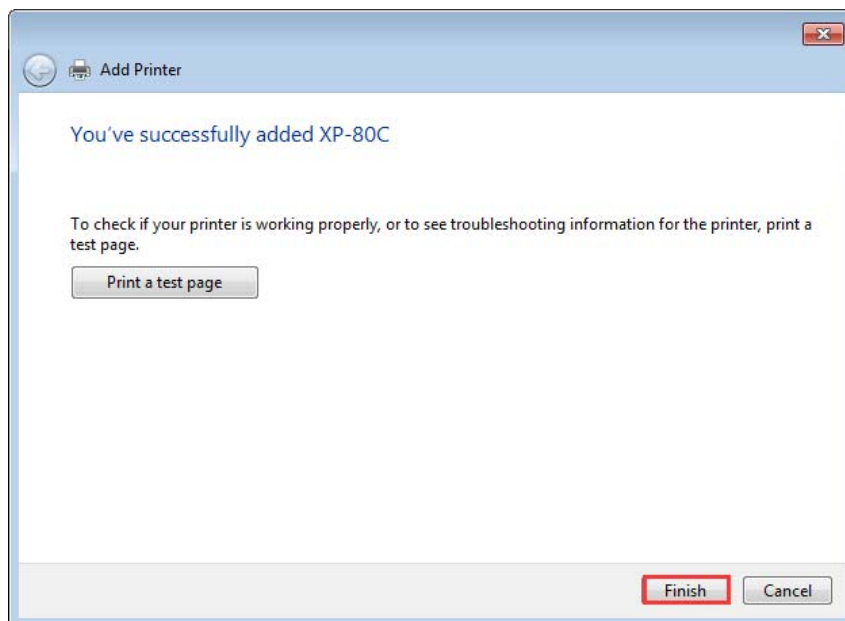
12 、 Default driver name, Then click “Next”, See picture below:



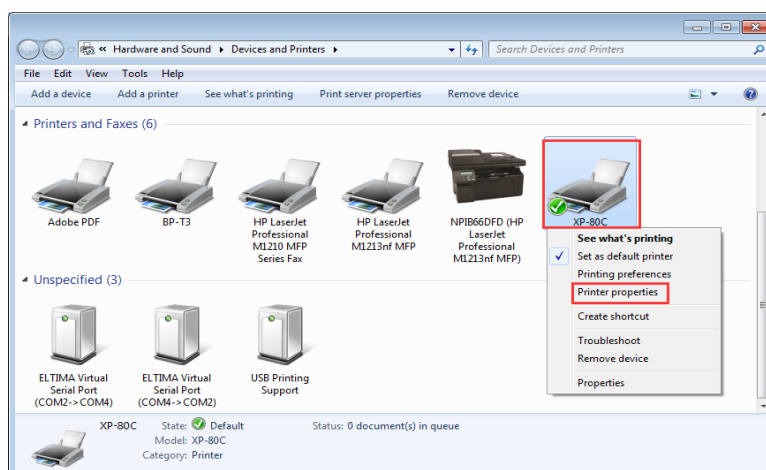
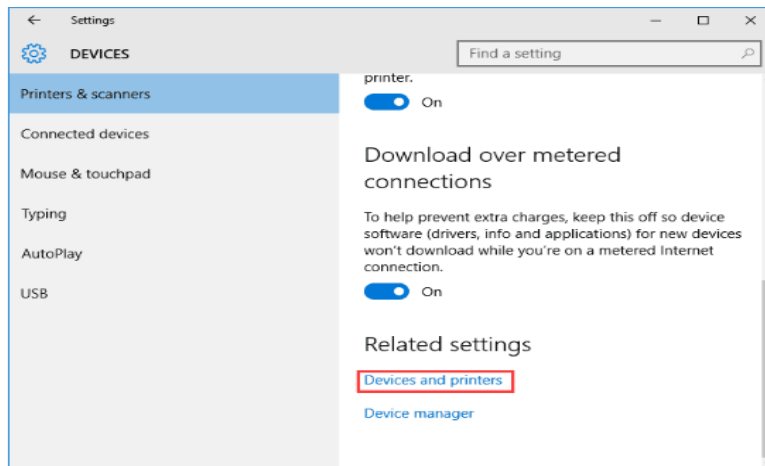
13、 Choose “Do not share this printer”. Click “Next” button. See the picture below:



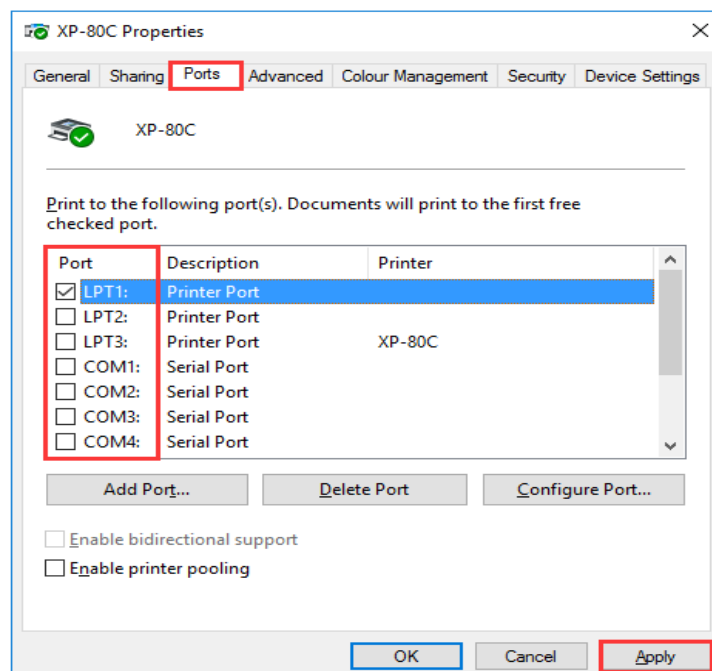
14、 Click “Finish”. See the picture below:



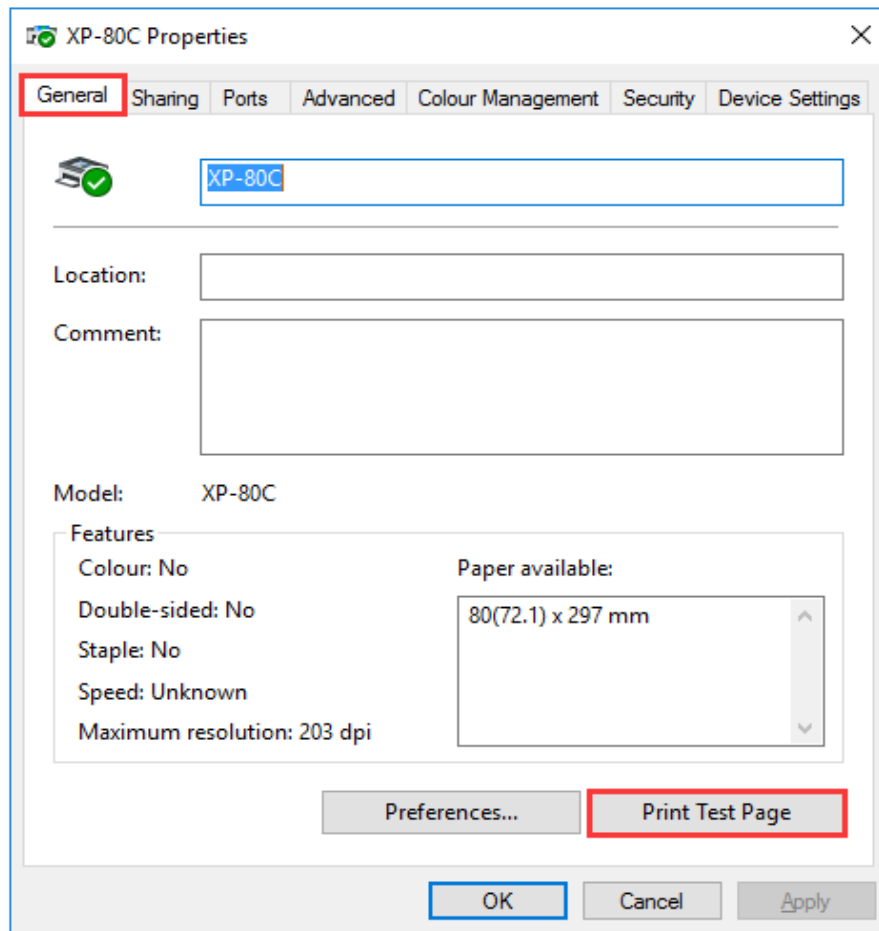
15、 Printer added successfully. Corresponding icons of the driver is shown under the “Devices and Printers” tab. Then, click the right mouse button on the icons of the printer driver—“Printers Properties”. See the following picture.



16、 Open “Diver Interface” and choose the corresponding port. Then click “Apply”. See the following picture.



17、 Select “General”, and click “Print Test Page” button.



If Print Test Page printed by printer, it means driver has been installed successfully.

