



# **WIRELESS PHONE CHARGER WI-FI DVR**

**(MODEL # SWWPC)**

## **INSTRUCTION MANUAL**



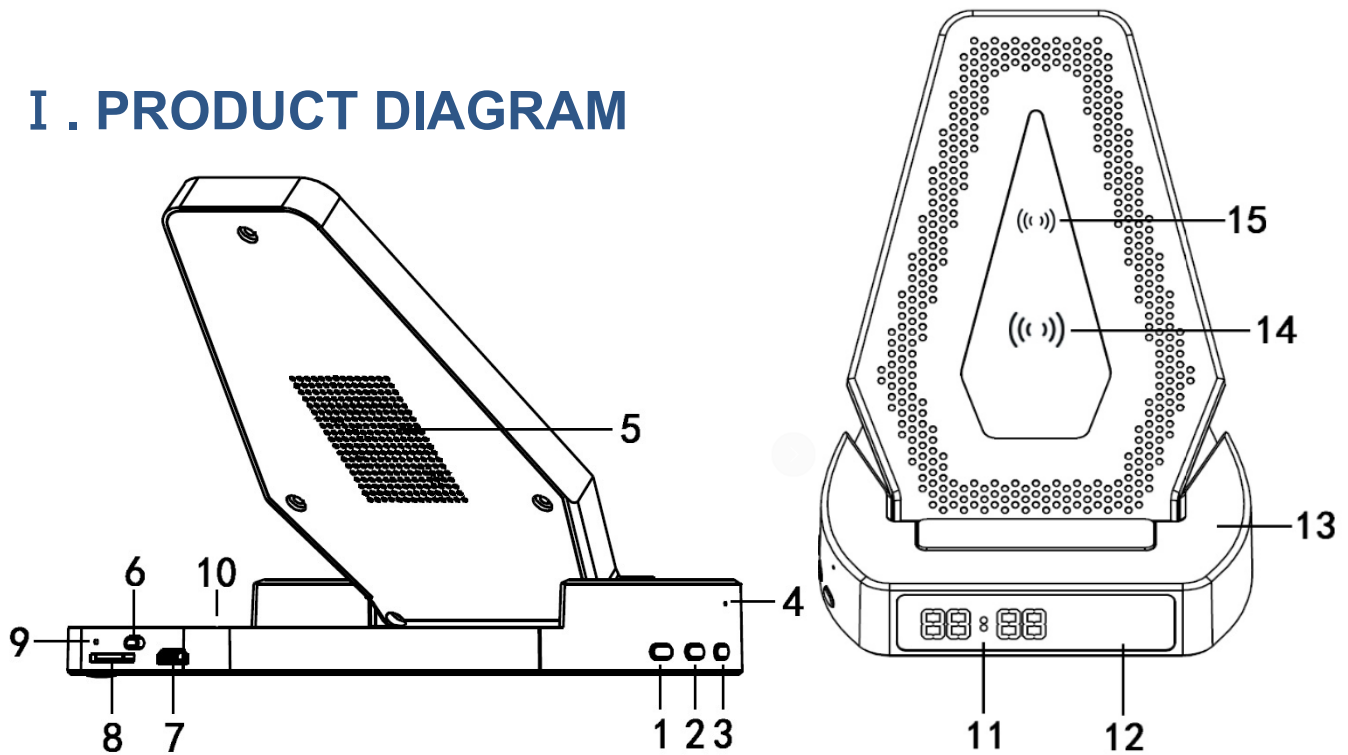
*Revised 9/16/2020*



# Contents

1. Download the app - minicam.....	5
2. Setup Instructions .....	5
STEP 1. Charge the camera .....	5
STEP 2. Insert a micro SD card.....	5
STEP 3. Turn on the camera .....	5
STEP 4. Connect your phone to this Camera's Wi-Fi....	6
STEP 5. Set local connections .....	6
STEP 6. Set remote connections.....	6
3 .Live Feed .....	8
4. Camera Settings .....	10
4.1 Device Name .....	10
4.2 Password.....	11
4.3 Share .....	11
4.4 Motion Detection Alarm Configuration .....	11
4.5 SD Card Record Configuration .....	13
5. How to share with another phone .....	14
6. Resetting the camera.....	14
7. Q&A .....	15
8. Warranty Service .....	16

# I . PRODUCT DIAGRAM



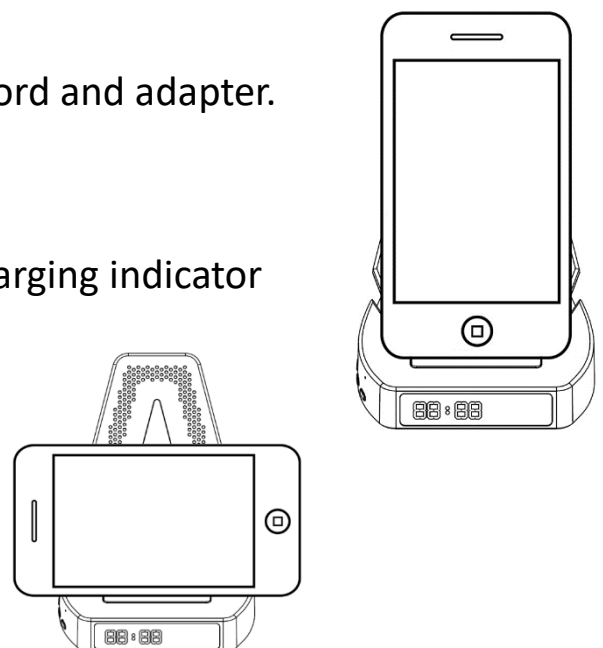
1	<b>Clock display switch &amp; -</b>	8	<b>Micro SD card slot</b>
2	<b>12/24 system switch &amp; +</b>	9	<b>Reset hole</b>
3	<b>Time set button</b>	10	<b>Camera indicator light</b>
4	<b>Microphone</b>	11	<b>Time display screen</b>
5	<b>Heat emission hole</b>	12	<b>Camera lens</b>
6	<b>Camera switch</b>	13	<b>Charger indicator light</b>
7	<b>Micro USB input</b>	14&15	<b>Induction coils</b>

## II .WIRELESS CHARGER

**IMPORTANT:** Use the attached charging cord and adapter.

Do not use other cords or adapters.

Please wait for 3-5 seconds to check the charging indicator light after you put your phone.



## CHARGER INDICATOR LIGHT STATUS:

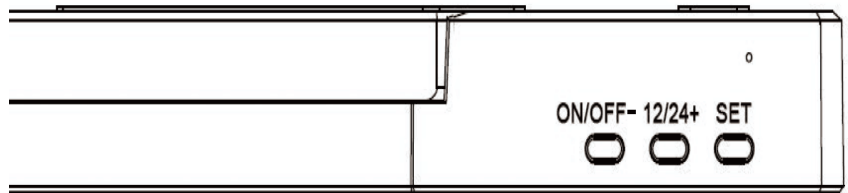
Blue & Red light solid	Standby mode
Blue light solid	Charging mode
Blue & Red-light blink	No detect the phone's wireless charging receiver

Please remove all metal cases and metal or magnetic objects from the back of your phone prior to wireless charging, as these may overheat and damage your device, next put your phone on the correct location, wait for 3-5 seconds, the Blue light will solid, it means the phone is charging now.

Note: iPhone has wireless charging temperature protection, it cannot be charged if the temperature exceeds 37°.

## III. TIME DISPLAY

After you plug in, the clock time will default display on the screen, simply press



the **ON / OFF button** to turn the display screen on or off, click the **12/24 button** to switch hours system.

## HOW TO SET THE CORRECT TIME:

- Long press the **SET button** for about 5 seconds to active the time setting;
- Press the "+" and "-" **button** to adjust;
- Click the **SET button** to switch between hour and minute setting.

*Note: The instructions outlined in this manual are specifically for the Android, but iPhone setup instructions are similar.*

## 1. DOWNLOAD THE APP - MINICAM

Open the camera function on your smart phone to scan the QR code. Follow the URL link to download the application called **Minicam** to the phone. If the QR code is unreadable, search the app store for the **Minicam** application.



minicam



## 2. SETUP INSTRUCTIONS

### STEP 1. CHARGE THE CAMERA

Initially, charge device for 4-6 hours before using.

We recommend that you plug the device into an auxiliary outlet for all day use.

### STEP 2. INSERT A MICRO SD CARD

Please insert the micro SD card into the slot on the side of the device for recording. It supports up to 128Gb (not included in the package).

### STEP 3. TURN ON THE CAMERA

Push ON/OFF button to the ON position, wait 20 seconds, then the indicator will light up.

*Note: Device will work for 4 hours once full charged when not connected to an auxiliary outlet.*

## STEP 4. CONNECT YOUR PHONE TO THIS CAMERA'S WI-FI

Access your smart phone's Wi-Fi settings menu. Search and connect camera's Wi-Fi signal starting with "CAM888".

*Note: Some Android phones such as Samsung will notice that your camera's Wi-Fi cannot access the Internet. Please ignore this alarm and continue to connect to the camera's Wi-Fi.*

If after 1 minutes, the camera's Wi-Fi does not appear, Reset the device (see Page 12) and try again.

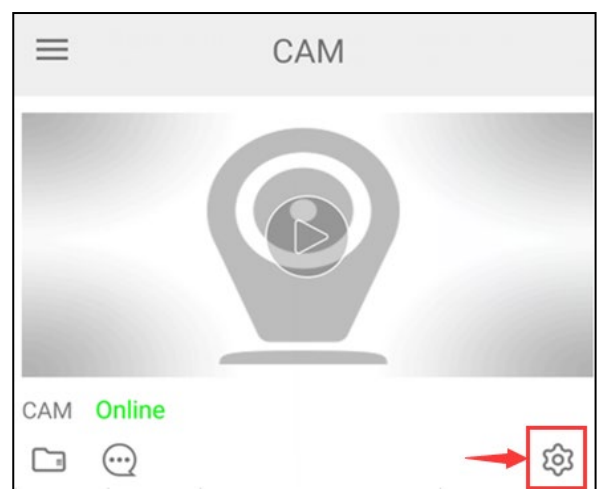
It may take about 1 minute if using iPhone, please be patient.

## STEP 5. SET LOCAL CONNECTIONS

Open the minicam app on your phone. The Minicam app will confirm permissions with the following: location, notifications, and microphone, the camera will be searched automatically, click "Confirm" to add it. If the device does not appear, check if your phone is connected to the camera's Wi-Fi, then try again.

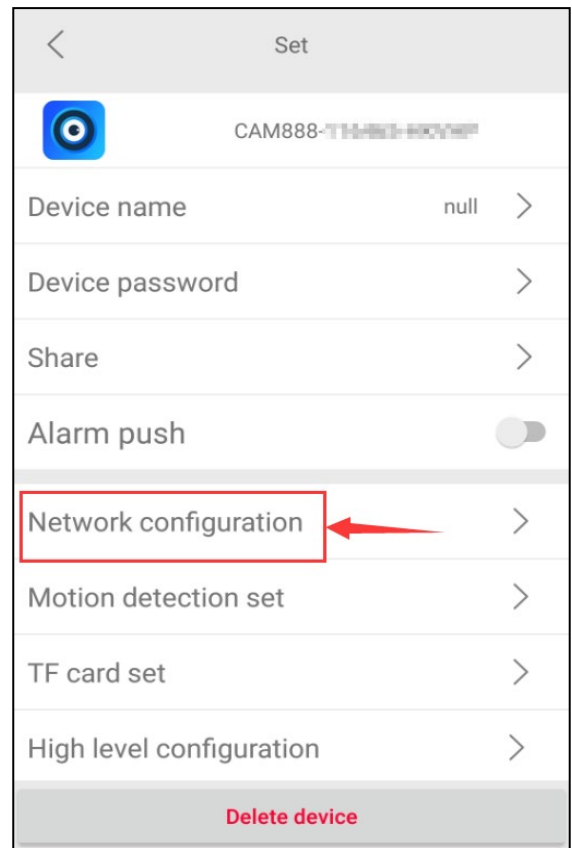
## STEP 6. SET REMOTE CONNECTIONS

Click the "**Settings**" icon (noted to the right in red)>>> "**Wi-Fi Config**" >>> Select your router's Wi-Fi name >>> Enter your Wi-Fi password >>> Click "**Confirm**" >>> Wait 1-2 minute for configuration.



After the configuration is complete, the setup will show online. Then, you will have access to view the live footage from the smart phone.

*Note: If after 2 minutes, the camera is still offline, please check for the following: the Wi-fi connected to the 5Ghz access point or the entered password was incorrect.*

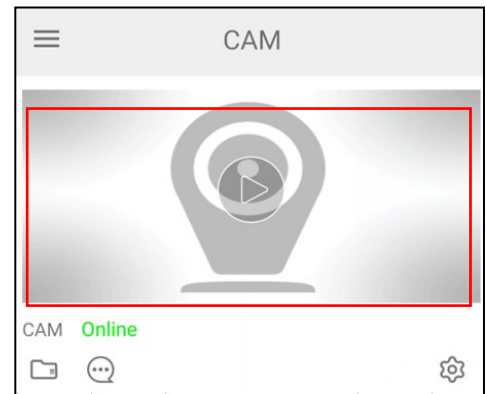


Locate your router's Wi-Fi name and input the password, then click " ✓".

Note: Choose the 2.4Ghz Wi-Fi access point signal. Do not use the 5Ghz. It is not supported.

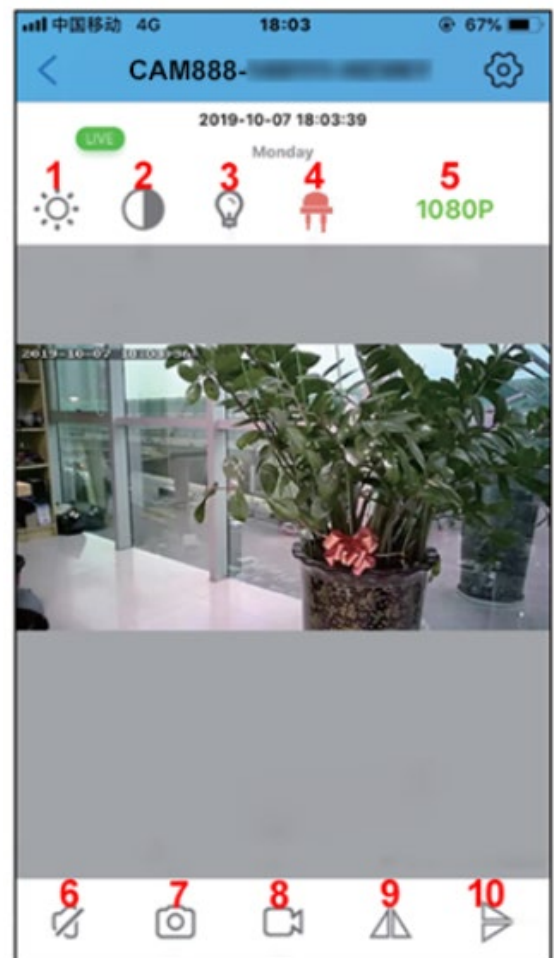
### 3. LIVE FEED

Click on the play button on the preferred video to view the live feed.



### TERMS & DEFINITIONS OF BUTTONS

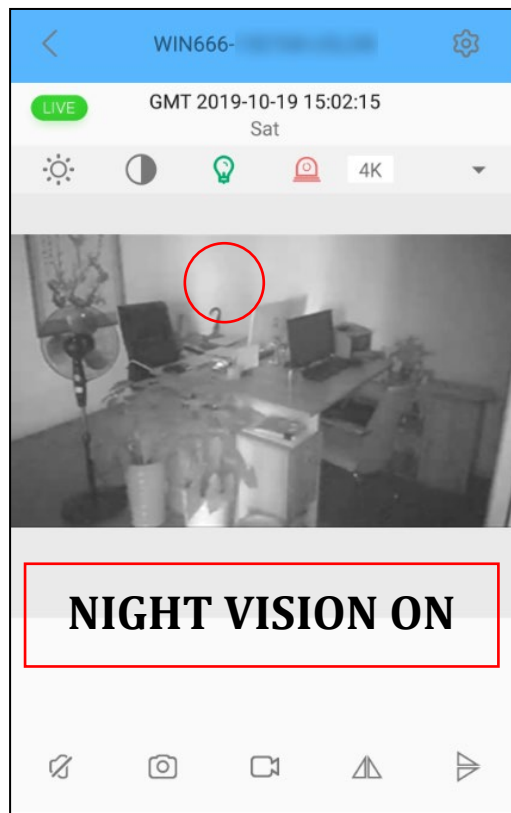
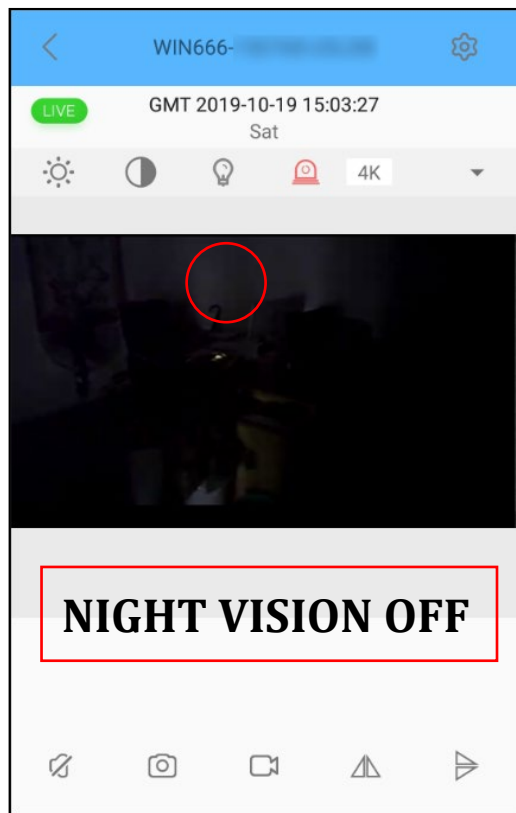
1. **Brightness:** click to adjust brightness
2. **Contrast:** click to adjust contrast
3. **Night Vision:** click to turn ON/OFF Night Vision Mode for use in low light
4. **LED Indicator Light:** click to turn LED lights ON/OFF
5. **Resolution:** adjust resolution for video quality
6. **Audio:** Click to turn ON/OFF the audio.  
*Note: this function is not available for products sold in US.*
7. **Snapshot:** click to take a picture and save it on your phone
8. **Record:** click to begin recording video on your phone
9. **Horizontal Flip:** Flip the camera's view horizontally
10. **Vertical Flip:** Flip the camera's view vertically





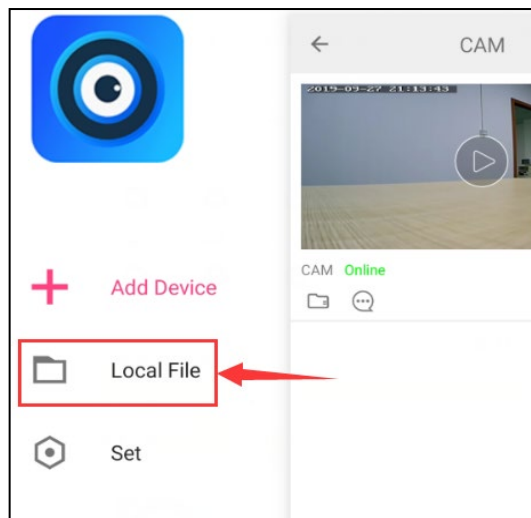
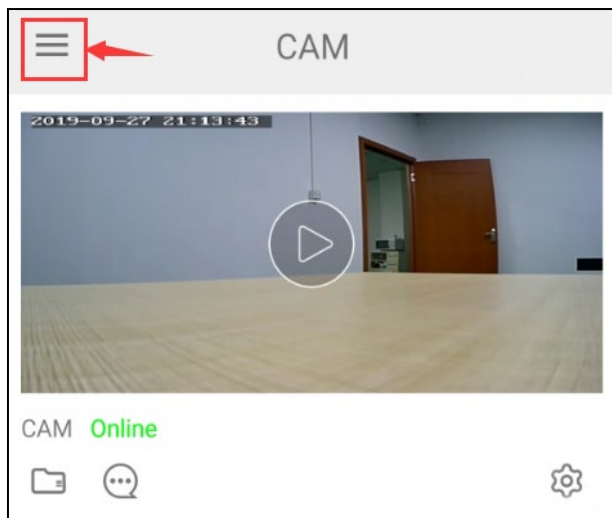
## NIGHT VISION MODE

Turn night vision ON and OFF manually. It captures sharp images even with limited or no light is present.



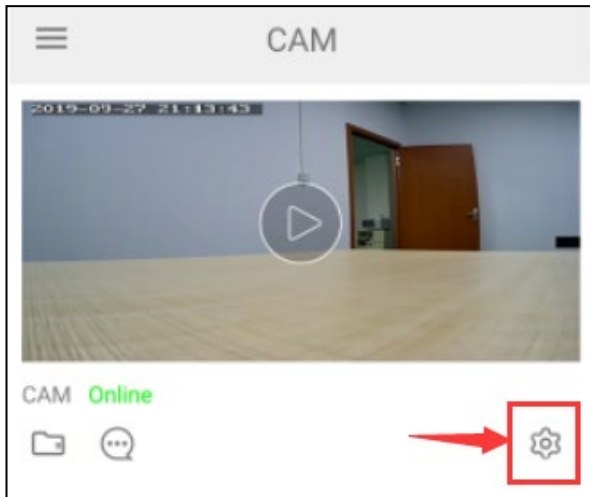
## HOW TO VIEW THE RECORDINGS SAVED ON THE PHONE

You can preview videos and photos saved on your phone.



## 4. CAMERA SETTINGS

To manage device settings, click the settings icon in the bottom right corner (noted in red).

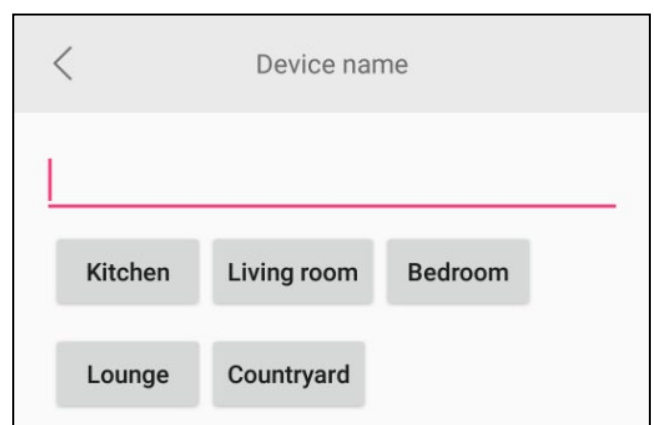
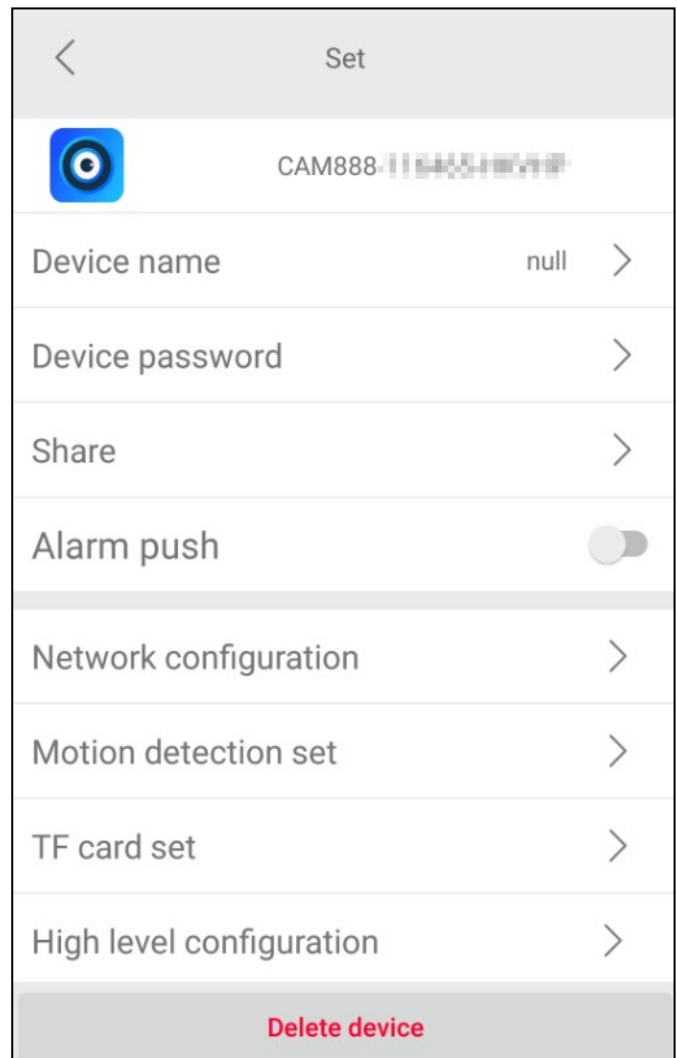


### DEVICE SETTINGS

In the Settings field you can modify, delete, or share the device. In the advanced settings you can manage the device password, alarm notifications, motion detection settings, micro SD card recording settings, and much more.

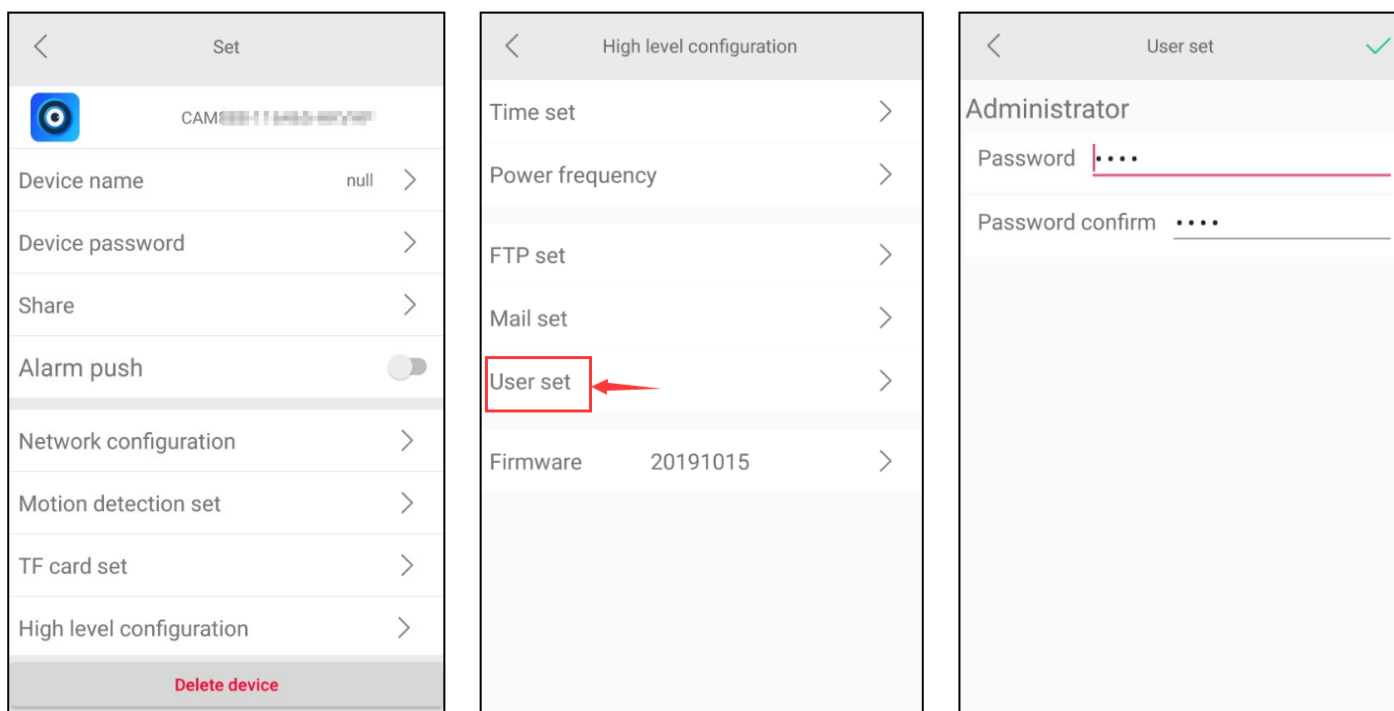
#### 4.1 DEVICE NAME

You can rename the device by its location, so it is easy to tell where you have an uninvited guest. Or, just name the device how you see fit.



## 4.2 PASSWORD

The password is for the security of the camera access. The startup password is set to **8888**. To protect your privacy and security, it is highly recommended you change the access password. Click the "**Settings**" icons >>> "**High level Configuration**" >>> "**User set**" >>> enter a more secure password.



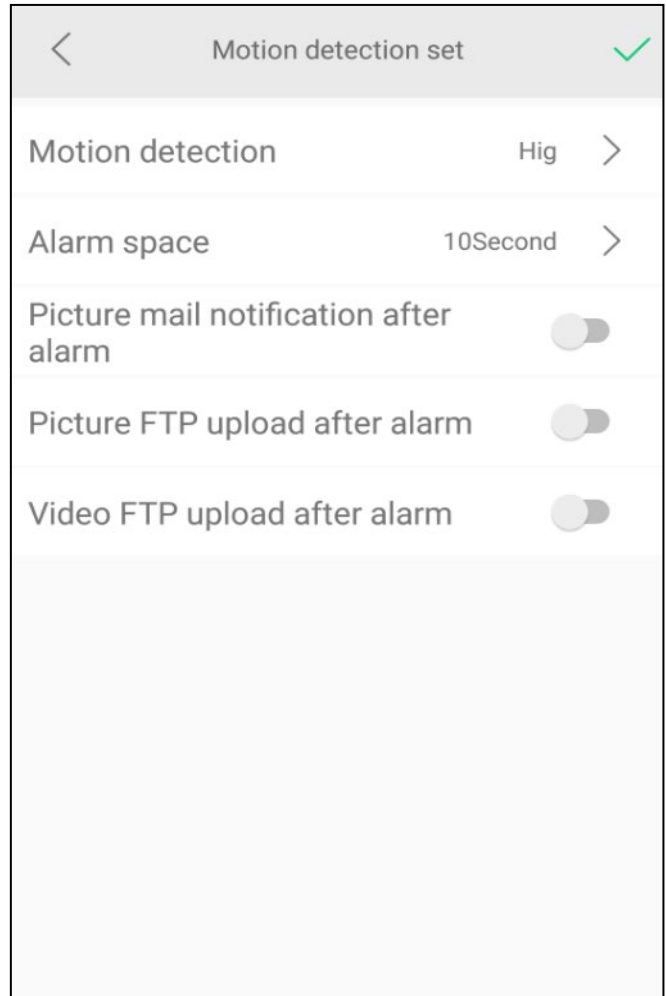
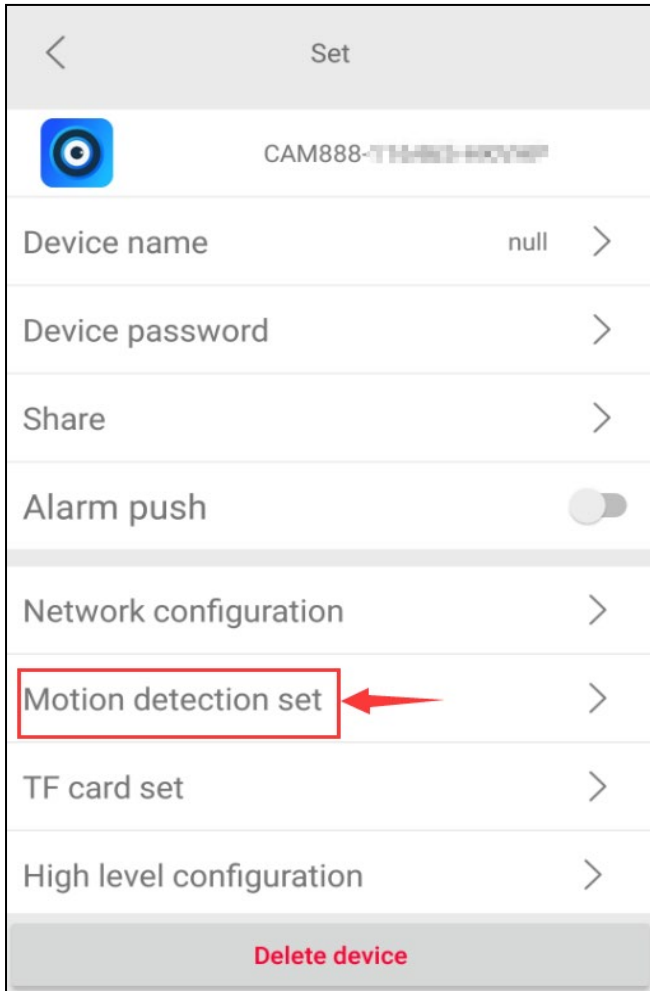
## 4.3 SHARE

If it is showing the RC code of the camera, used by share with other phones. The details about how to share with another phone, please see the Page 14.

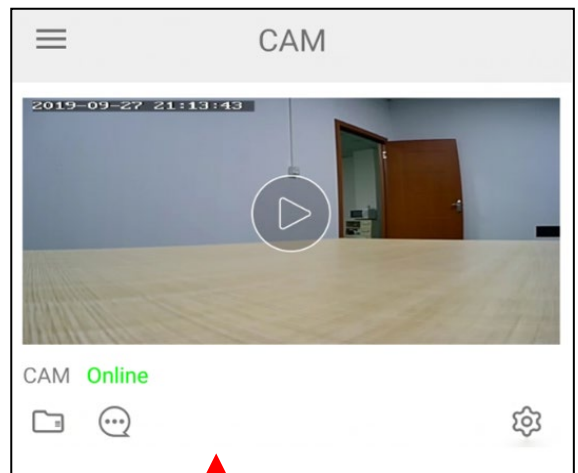
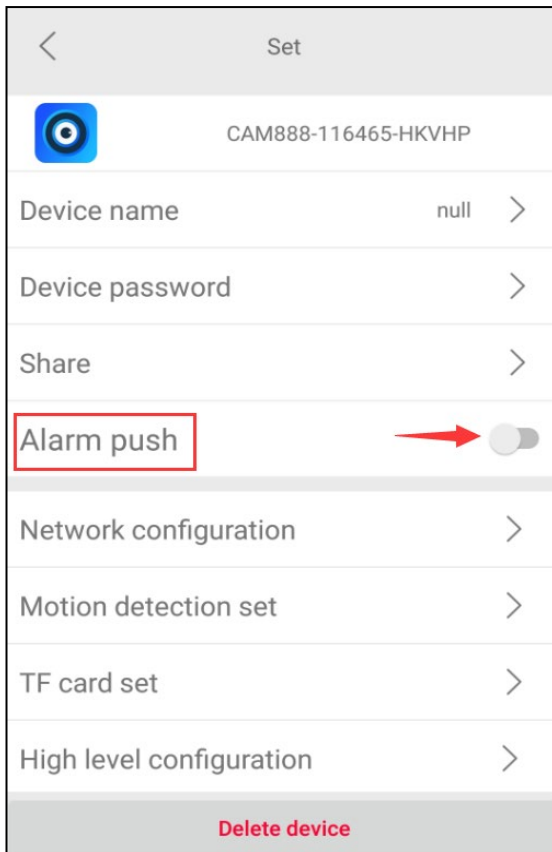
## 4.4 MOTION DETECTION ALARM CONFIGURATION

Settings contain the most important and helpful features of the camera. These settings allow you to manage your push notifications and activity alerts from your camera.

See following pages for detailed alarm settings.



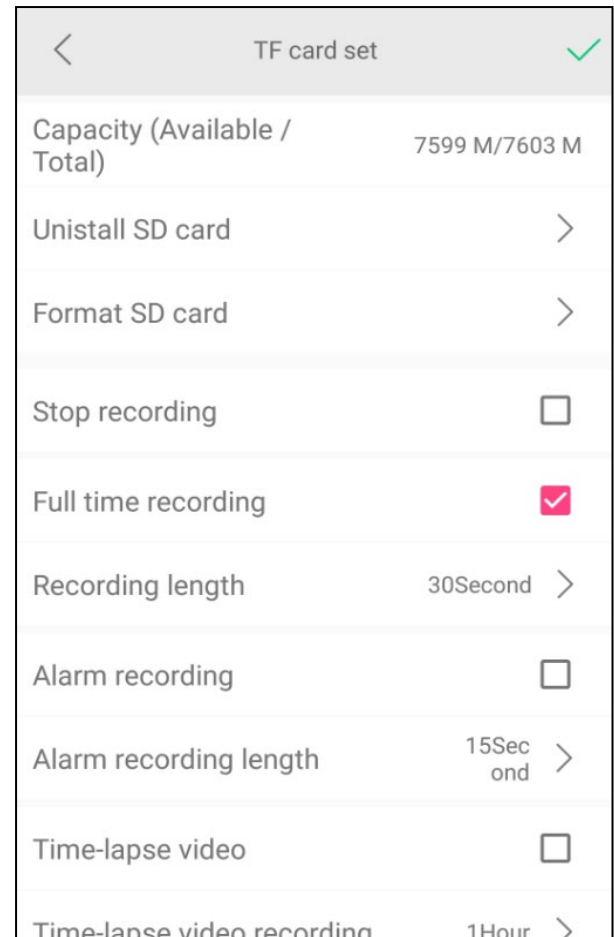
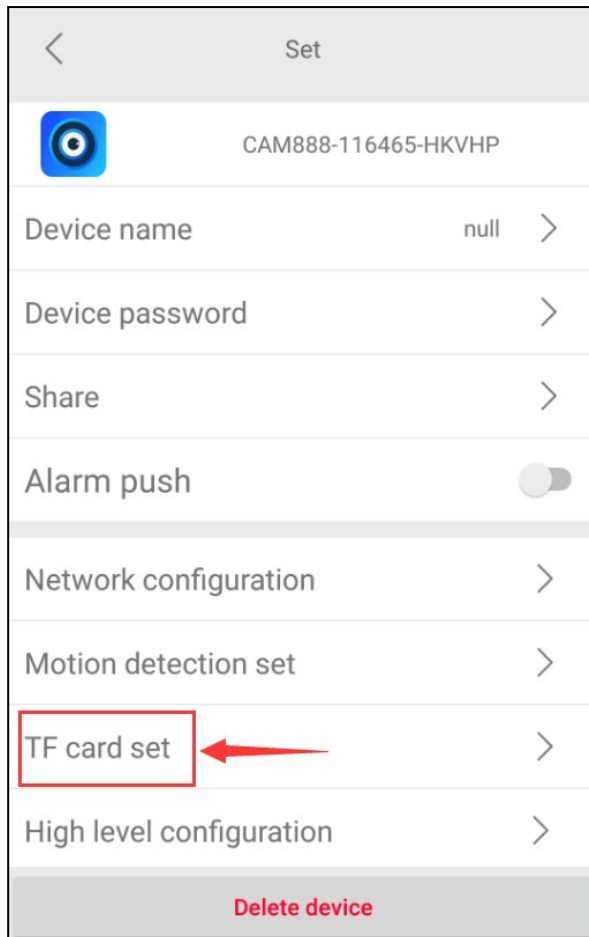
To trigger the Alarm push, please open the alarm notification.



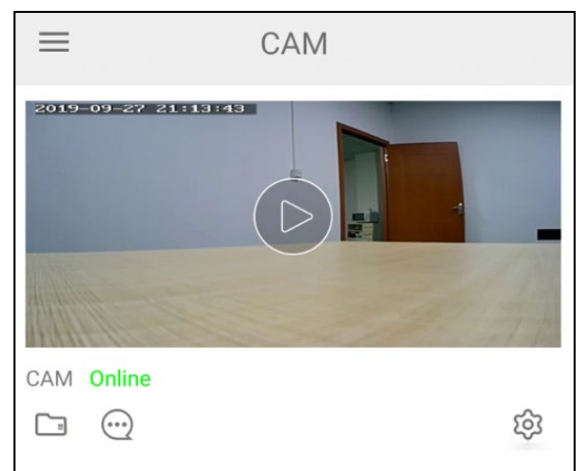
The alarms with pictures will be shown here.

## 4.5 SD CARD RECORD CONFIGURATION

Manage your micro SD card recording settings by adjusting the record mode and set a length of time you want the camera to record. Make sure the micro SD card is formatted before using.



Play online and download files from memory card. will be shown here.

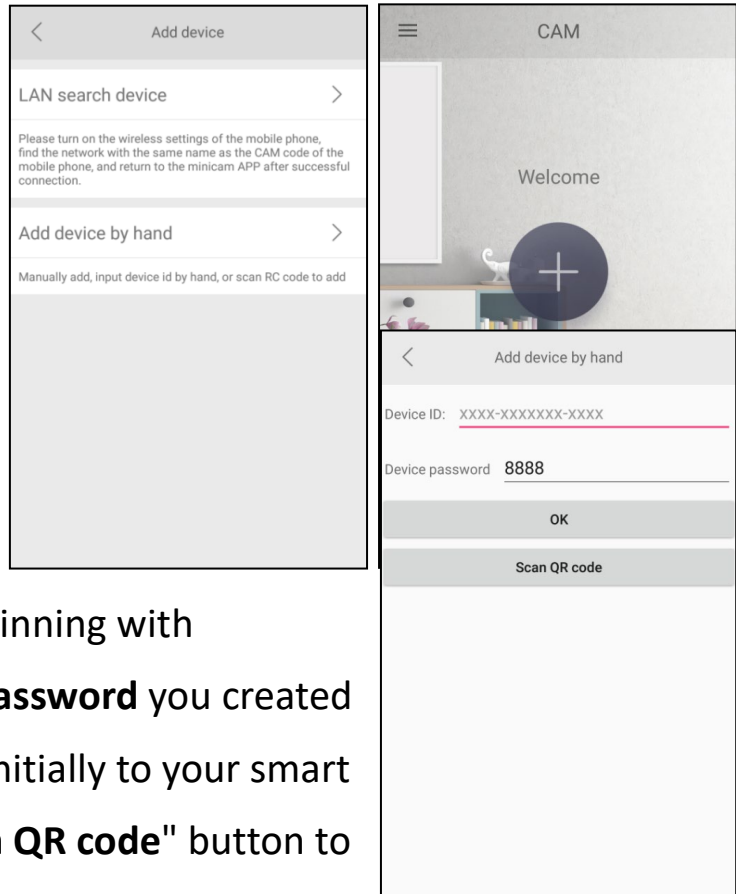


## 5. HOW TO SHARE WITH ANOTHER PHONE

1) Change the device to remote connections before sharing.

2) Download and install the **Minicam** app on the smart phone you wish to share with.

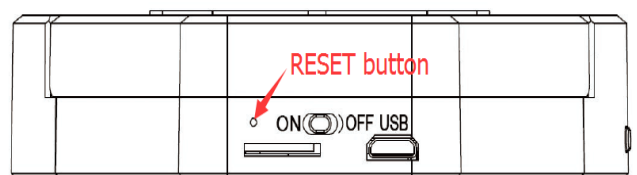
3) On the shared smart phone, open the **Minicam** app, click "**Add Device**" >>> "**Add device by hand**" >>> enter the **Device ID** beginning with "**CAM888**" and enter the **Device password** you created when you connected your device initially to your smart phone. You can also click the "**Scan QR code**" button to add the device by scanning the QR code on the back of camera.



If the smart phone and the device are on the same router's Wi-Fi, please click the "**LAN Search Device**" to add it.

## 6. RESETTING THE CAMERA

Locate the **RESET** button as referenced on the Product Diagram. Then do as follow:



**Step 1.** Make sure the camera is turned on;

**Step 2.** Hold down the Reset button 5 seconds;

**Step 3.** Wait for 1 minutes for it reboot, done.

## 7. TROUBLE SHOOTING

**Q: Why can't I find my device listed or connect to the Wi-Fi?**

1. Confirm that the device is powered on.
2. Confirm that the device and the router are close in proximity to each other, and there is no interference causing disruption of the wireless signal strength.
3. Confirm that the Wi-Fi password is entered correctly in the **Minicam** app.
4. Confirm that the selected access point Wi-Fi is 2.4Ghz.
5. Reset the device and follow the instructions for installation.

**Q: Why does the camera show "device not online"?**

1. When you connect it to the router, it may display "device not online". During rebooting, please wait 1-2mins, then it will display "Online".
2. Please check to make sure the connected router is plugged in and powered on. Check the device connection for the Wi-Fi access point of 2.4Ghz.
3. Reset the device.

**Q: Micro SD card cannot save files.**

Before inserting the card, reformat the micro SD card in your computer.


**Q: The passwords was forgotten**

Reset the device.

**Q: How to connect device to app when the Wi-Fi network is changed?**

After changing the Wi-Fi network, the device will be offline. Open the Minicam app on the smart phone. Remove the device first. Then, press the **RESET** button on the device for 5 seconds to reset it. Once reset, reconnect the device the to the **Minicam** app.

**Q: How to turn off the smoke detector camera indicator light?**

Open the **Minicam** app, enter the main interface of the app, you will see the camera, click to enter the operation interface, click  to turn OFF the indicator.

## **8.WARRANTY SERVICE**

There is a warranty period of one year that covers defects in materials or workmanship, with the following exceptions:

- The warranty does not cover damage resulting from accident, misuse or abuse, lack of reasonable care, or loss of parts.
- The warranty will be voided if the unit has been opened or tampered with in any way (unless by an authorized dealer) or if any unauthorized replacement parts have been used.
- The warranty does not cover corrosion in the battery compartment caused by long term battery storage.

### **CONDITIONS OF SALE**

Purchase of this product is an agreement by the purchaser/user to hold all sellers and manufacturers harmless of all liabilities and damages. Purchaser also agrees to use product only in a lawful manner. Consult your state and local laws.

### **TO OBTAIN SERVICE**

Contact the Authorized Dealer from whom you purchased this unit for a Return Merchandise Authorization. The return unit must be sent postage prepaid and proof of purchase is required. Damage or loss occurring during shipment is not covered by this warranty.