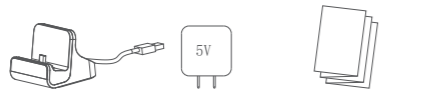


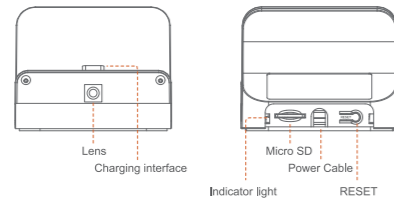
1. Packing List

Open the package, then make sure the Smart charger dock(device) is intact, and with all the below accessories.



1 x Smart Charger Dock 1 x Adapter 1 x Quick Installation Guide

2. Product Diagram



Description	Introduction
Lens	Capture Videos
Charging interface	Charging for your mobile devices
Micro SD	Support Micro-SD Card Storage(up to 128G)
Power Cable	Supply power
RESET	Press and hold [RESET] for 5 seconds, the device will be restored to factory default setting

Indicator light

Blue LED indicator	Light off: No power
	Light solid: Power on Light blink: System running normally
Red LED indicator	Light off: Wi-Fi no connection
	Light solid: Wi-Fi connected Light blink: Waiting connect to Wi-Fi

3. Preparation

Please prepare the below stuff before you use it.

3.1 One smartphone or tablet PC(Mac or Windows PC is not acceptable) with IOS 6.0 or Android 4.0 system(higher version system is acceptable)

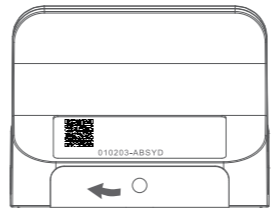


3.2 Wi-Fi Router

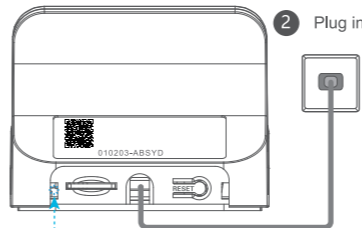


- Device can only connect to 2.4Ghz Wi-Fi router. Don't support 5Ghz Wi-Fi router.
- Make sure turn on the DHCP of router, and MAC address should be off.

4. Operation Instruction (please read, IMPORTANT!)



1 Open the back cover.



2 Plug in.

3 Plug in and wait about 40 seconds, the device starts and the blue LED indicator will blink.

- Distance between the router and the device should be within 3 mtrs during configuration.
- Please don't use special character such as Chinese, symbol to name the WiFi.
- Please don't use special character such as Chinese, symbol as the password for the WiFi and Wi-Fi password can not be blank.

3.3 Install "IOTLiving" App

- Search "IOTLiving" App from Apple Store or Google Play, then download.
- Scan the QR Code below and install the App.



iOS APP



Android APP

WARNING



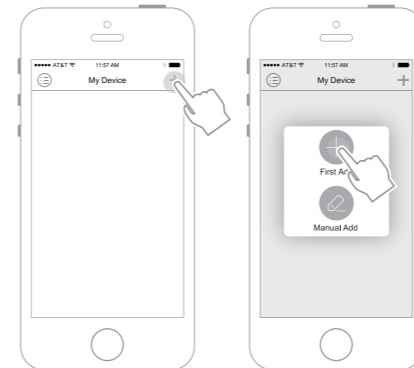
Correct



Wrong

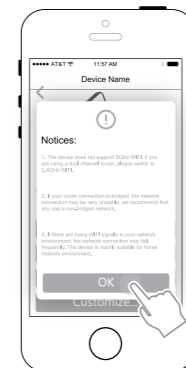
5. Configure Device

Open the App.



1 Click "+"

2 Click "First Add"

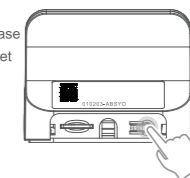


3 Configuration note

When the red LED indicator is blinking, please click Next.

Notice

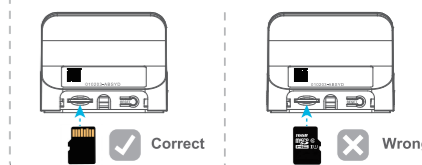
- If the red LED indicator does not blink, press [RESET] button and hold 5 seconds, until the blue LED indicator is solid, release the button and the device is reset to factory default setting.



WARNING

- In order to make sure the device work normally, please don't use any non-matched adapter.(nominal output DC 5V 1.5A)
- After the device started, if the red LED indicator does not blink, please reset the device to factory default setting.
- Press [RESET] button and hold 5 seconds, when the blue LED indicator is solid, release the button, then the device is reset to factory default setting.

How to insert TF card.



About the User Manual:

The user manual is used as a guide.

The photos, graphic, charts and illustrations provided in the user Manual are only used to explanation and interpretation, which may be different from specific products, please refer to the real object.

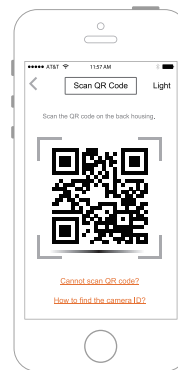
The user manual maybe updated because of the products version upgrade or other requirements, if you need the latest version of the user manual, please contact customer service for the latest version of the user manual.

6. My Cameras

7. Watch Video

FAQ

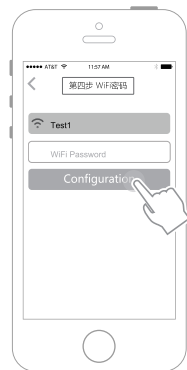
For more questions, please open App and click "FAQ"



4 Scan the QR code on the back housing.



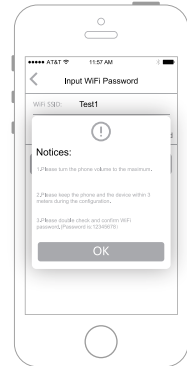
5 Name the device.



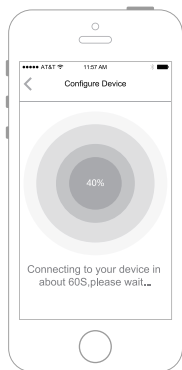
6 Input the correct password of the Wi-Fi.



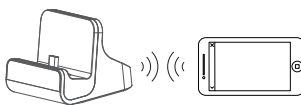
7 Input the right password of the WiFi



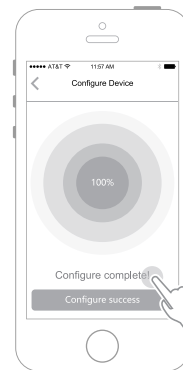
8 Configuration note



9 Please put your smart phone or tablet PC close to the device within 10cm, then press to configure.



i Turn the volume of smart-phone or tablet PC to maximum.



10 Wait for about 60 seconds, the configuration will be done. (After the configuration is successful, the red LED indicator will be off in about 60 seconds.)

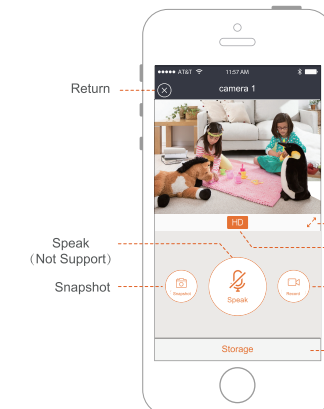
i If configuration failed

- Please make sure input right password(check the capital&small letter,blank)
- Please keep the distance between the device and the WiFi router within 3m.
- Press and hold [RESET] for 5 seconds, the device is restored to factory default setting, repeat the configuration again.



1 Click the screen to watch the video

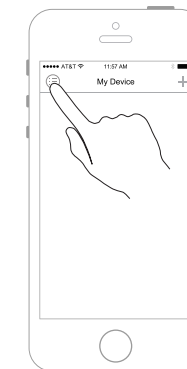
Video Display
Menu
Storage
Device Sharing



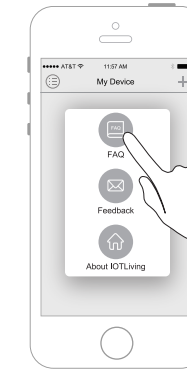
Return
Full screen
LD/HD Switch
Recording
To view the photos and videos
Speak (Not Support)
Snapshot

2 Watch Video.

i If the live video is frozen, please close it and open again. If it is still frozen, please power off and restart the device and the WiFi router, and keep the device and the WiFi router within 3m to configure again.



1 Open the App, then click "☰"



2 Click "FAQ" enter FAQ page

深圳市尚品腾飞科技有限公司

产品型号	GF-DC100	部件名称	座充使用手册(中性)
设计	钟明芳	材料	120g书纸
印刷尺寸	520x105mm	成品尺寸	65x105mm
工艺	风琴折, 单色印刷	版本	REV2.1.0
注: 折页要端正, 印刷字迹要清晰			

审核:

审核:

确认:

正面



背面

