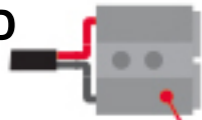


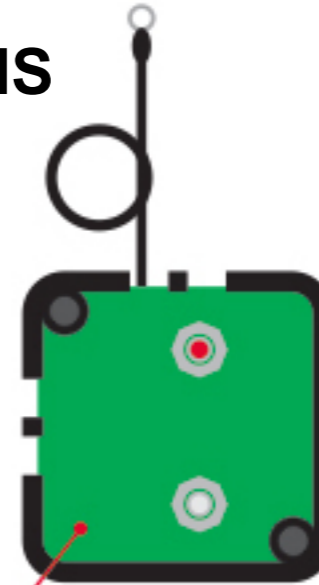


VEHICLE WIRING INSTRUCTIONS

INSTALL THE PROVIDED
ANDERSON CONNECTOR
AT THE END OF THE 6MM
LEAD

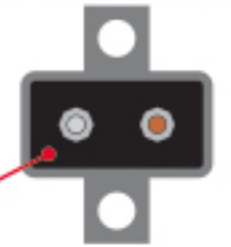


6MT LENGTH OF 6MM TWIN
CORE CABLE

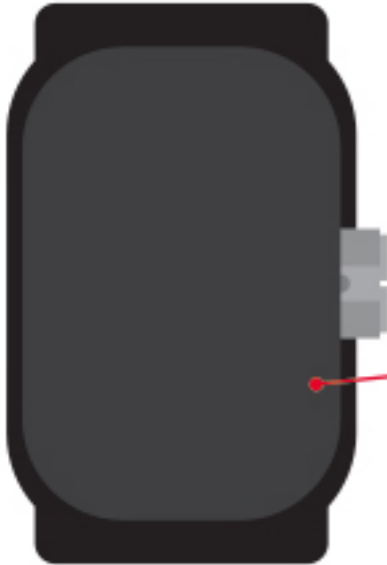


VSR

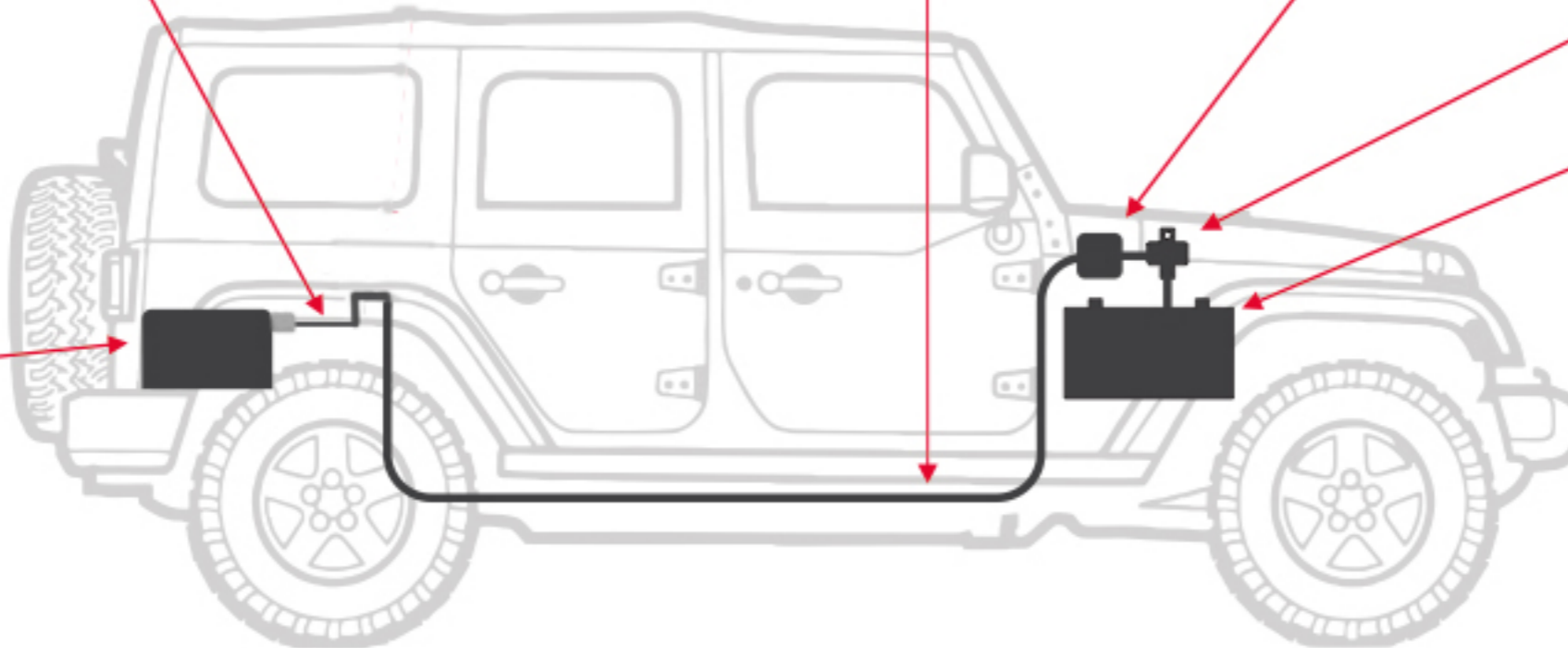
CIRCUIT
BREAKER



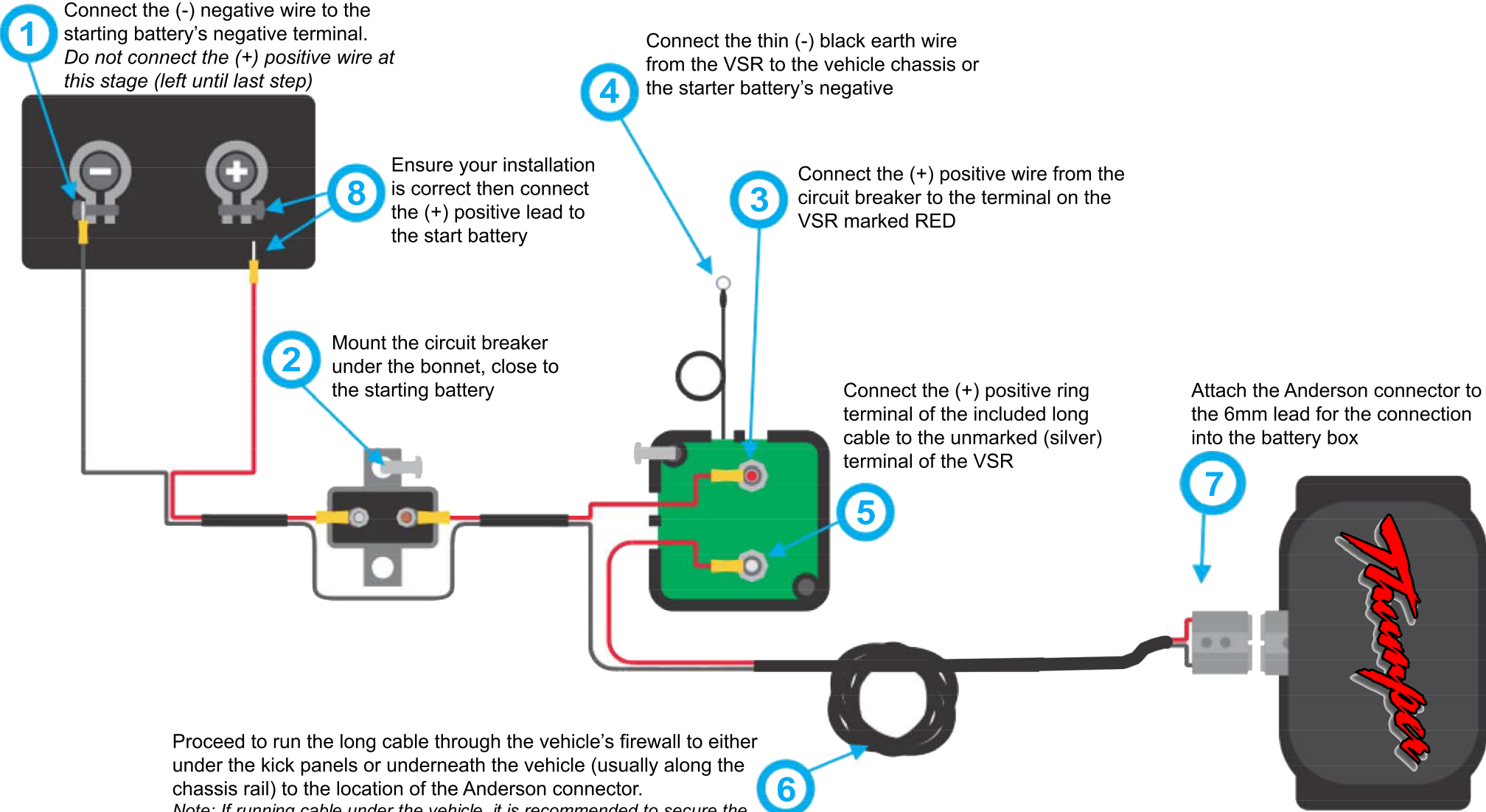
BATTERY BOX



STARTING BATTERY



(08) 8391 3121



1

Connect the (-) negative wire to the starting battery's negative terminal. Do not connect the (+) positive wire at this stage (left until last step)

8

Ensure your installation is correct then connect the (+) positive lead to the start battery

2

Mount the circuit breaker under the bonnet, close to the starting battery

4

Connect the thin (-) black earth wire from the VSR to the vehicle chassis or the starter battery's negative

3

Connect the (+) positive wire from the circuit breaker to the terminal on the VSR marked RED

Connect the (+) positive ring terminal of the included long cable to the unmarked (silver) terminal of the VSR

5

7

Attach the Anderson connector to the 6mm lead for the connection into the battery box

6

Proceed to run the long cable through the vehicle's firewall to either under the kick panels or underneath the vehicle (usually along the chassis rail) to the location of the Anderson connector.
Note: If running cable under the vehicle, it is recommended to secure the cable with both split conduit and zip ties.