

Thumper

'DROP IN' Replacement cells

Fitting Instructions – PLEASE READ BEFORE STARTING YOUR RE-PACK

Thank you for your purchase of the Thumper 'DROP IN' replacement cells.

This set of instructions will provide an overview of how to complete the re-pack of your Thumper battery pack and can be applied to all model units, including the 60 AH and 80 AH. The 80 AH 'DROP IN' pack is used in the sample images in this instruction guide. Please contact our office directly if you have any further queries about your re-pack.

REMOVING THE CELLS FROM YOUR THUMPER UNIT:

The first step of your re-pack would involve removing the 'worn out' cells from your existing Thumper unit.

- The Thumper pack will have a number of turn style screws (usually 6 screws that will each turn 90° to release). Turn to unlock each of the screws from the lid and gently 'wriggle' the lid to release it from its base.
- Once your lid has disconnected from the base, you will then require a pair of cable cutters. You will need to cut all cables (one at a time) as close as possible to the battery terminals (battery tags).
- The lid and base of the Thumper will now be separated from one another.
- **THE BASE** of the Thumper will still contain the 'worn out' cells in which need to be removed. It is best to obtain a bottle of mineral turpentine from your local hardware or supermarket and pour a generous cup or two of mineral turps into the bottom of the case to soak the batteries for 12-24 hours. Within this time, it is advisable to insert a flathead screwdriver between each of the cells and gently move it back and forth to allow for the mineral turps to soak between the cells to loosen the silicone. After 24 hours, your cells should virtually fall out of the case.
- Once the cells have been removed from the bottom of the case, please ensure you clean the case thoroughly with dishwashing detergent so that no remanence of mineral turpentine or silicone remain. Put the base aside.

- **THE LID** of your Thumper unit will now require the main set of cables that are connecting into the 175Amp Anderson to be removed. Please follow the image to the right, which shows that you will need to use your flathead screwdriver to push down on the locking tabs that hold the lug of the Anderson into place.

Once you push the locking tab down within the Anderson, you will then be able to 'pull on' the cable behind to remove the lug from the Anderson. This is a very tight connection and will require a bit of force to remove.



- Please remove both the positive and negative lug from the Anderson housing. Removing these lugs will remove the BULK of the cable that was fitted to your Thumper lid. The lid and base are now ready for the repack.

- **Note: The lugs within the small 50 Amp Anderson WILL NOT BE REMOVED** – please leave these original cables connected in your lid as the positive and negative cable connected to this 50 Amp Anderson will connect into the yellow crimp joiners fitted to your 'DROP IN' pack in later steps.



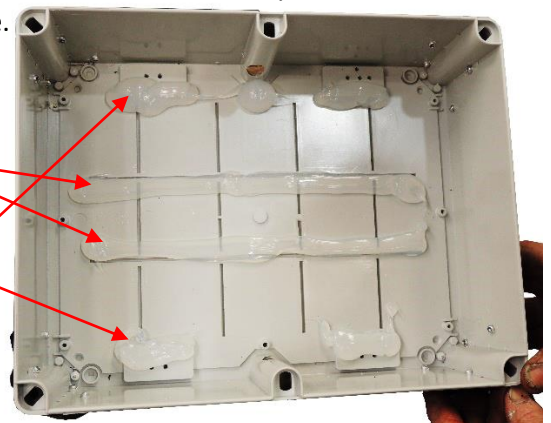
RE-PACKING YOUR THUMPER UNIT

You are now ready to begin the re-pack of your Thumper battery pack using the set of 'DROP IN' replacement cells. Included in your package is 1 x tube of high quality 'roof and gutter' silicone.



Please use this silicone to run two main lines down the centre of the case.

Please then run three short lines across the top and the bottom of the case (as seen in the image to the right) →



The case is now ready for your 'DROP IN' cells to be installed.

RE-PACKING YOUR THUMPER UNIT (continued)



After you have prepared the case with the provided silicone (see prior step), you are then ready to then install the 'DROP IN' cells.

As shown on the image to the left, firmly grasp the top of the 'DROP IN' cells and lower them into your Thumper case. Please ensure that you install the cells facing the correct way for your front sticker of your Thumper battery pack.

At this point the terminals will remain secured with electrical tape to ensure that the 'DROP IN' cells insert with ease. It is recommended to not remove the electrical tape prior to 'DROPPING' the cells into the case.

NOTE: Please allow 24 hours for the silicone to set your new cells in place before using the Thumper unit on its side, etc.

It is now time to remove the electrical tape that is holding the cables together. Please remove the electrical tape and immediately separate the positive and negative cables to resemble the image to the right →



You are now ready to re-install the LID of your Thumper battery pack.

Using something to prop the lid behind the base, you will now be connecting the NEW set of Anderson LUGS from the 'DROP IN' pack to the 175 Amp Anderson (old cables removed earlier).

Please note that these lugs can be difficult to re-install into the Anderson housing and may require you to adjust and bend the cables in order to angle the lug correctly for fitting.

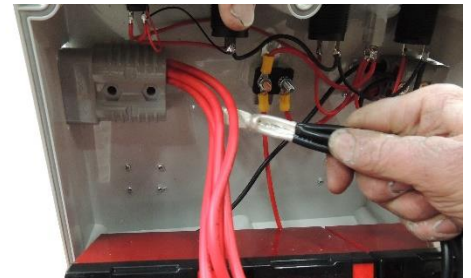
Please ensure that you are inserting the lug into the correct slot of the Anderson housing (red cable inserts into the (+) marked side and the black cable inserts to the (-) marked side of the Anderson housing.

The Anderson lug will need to be inserted correctly within the 175 Amp housing. Please see side image, which demonstrates the correct way to insert the lug. The raised end of the lug inserts into the raise housing side.



Insert the 175 Amp Anderson lugs one at a time into the Thumper housing using the tips above. **NOTE:** You must hear each lug firmly 'click' into place within the housing. If you have not heard a decisive 'click' you will need to visually inspect inside the Anderson housing to ensure that the lugs have gripped under the locking tab inside. If you are unsure, you must attempt to re-install the lug again until you are certain it has locked into place.

There now remains one last set of connections, which involve the 50 Amp Anderson connector. Using the only set of leads that remained original in your Thumper lid (this is a twin core 6mm cable that connects to the 50 Amp Anderson connector within your Thumper), you will be connecting these to your 'DROP IN' cells via the use of the yellow crimp joiners (as shown in images below).



Once you have completed the final connection for your 50 Amp Anderson, you should then see that your gauge will now illuminate on your Thumper unit (you may need to switch this on via the push button). If your gauge illuminates then this confirms that you have successfully completed your re-pack. It is now time to reconnect the lid of the Thumper with use of a flathead screwdriver (as shown in the image to the left).



If you require any additional information with regards to your repack or any additional matter, please contact our BLUE APPLE team direct on (08) 8391 0330