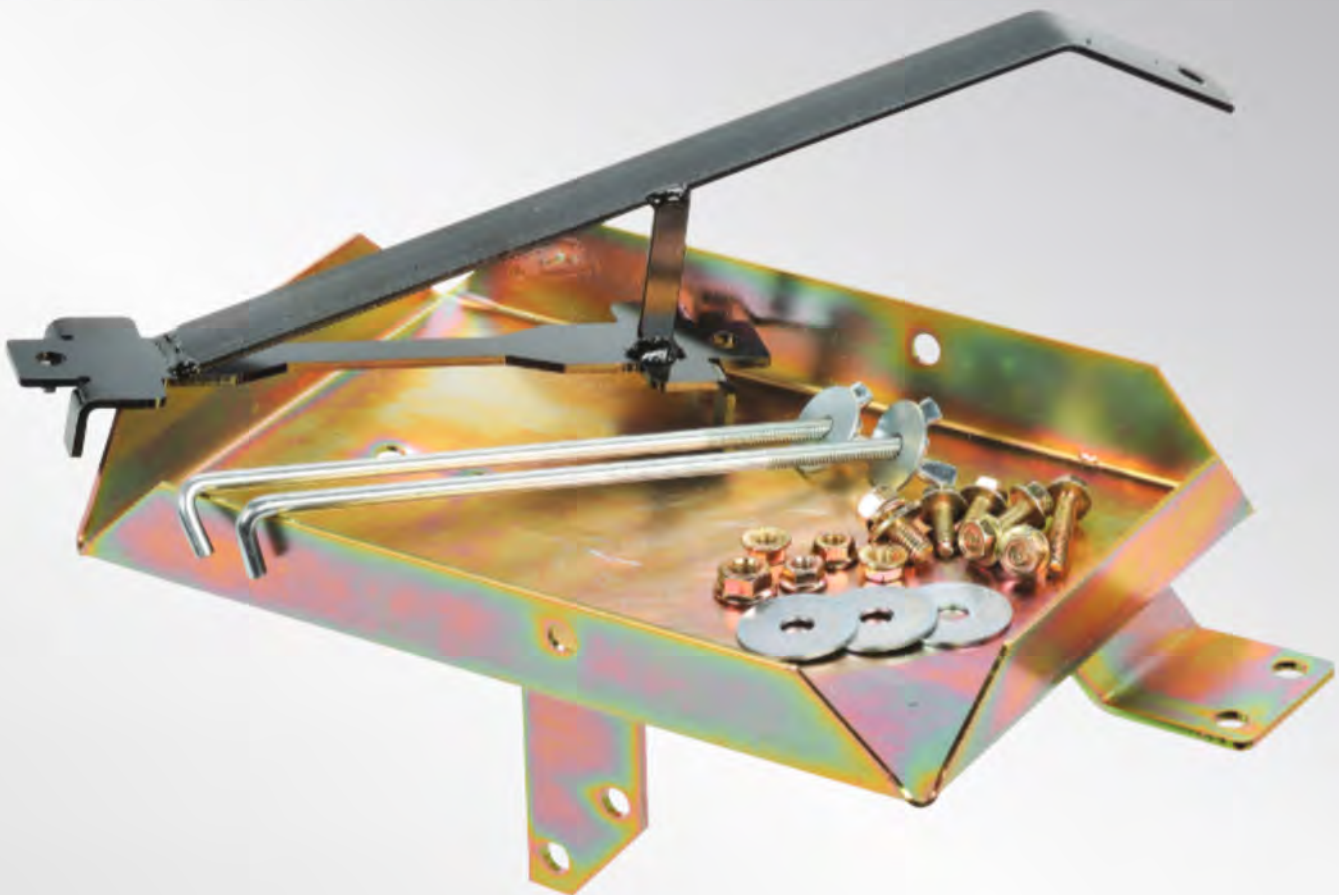


HEAVY DUTY DUAL BATTERY TRAY

Tray Fitting Instructions to suit Auxiliary battery for
ISUZU D-MAX & MU-X (2nd Generation)

Years: 2012 onwards

Models: 3.0 Litre 4JJ1-TC Turbo Diesel



IMPORTANT SAFETY INFORMATION

Please read this instruction thoroughly before fitting the tray.

This product is recommend to be fitted by a workshop or qualified mechanical person.

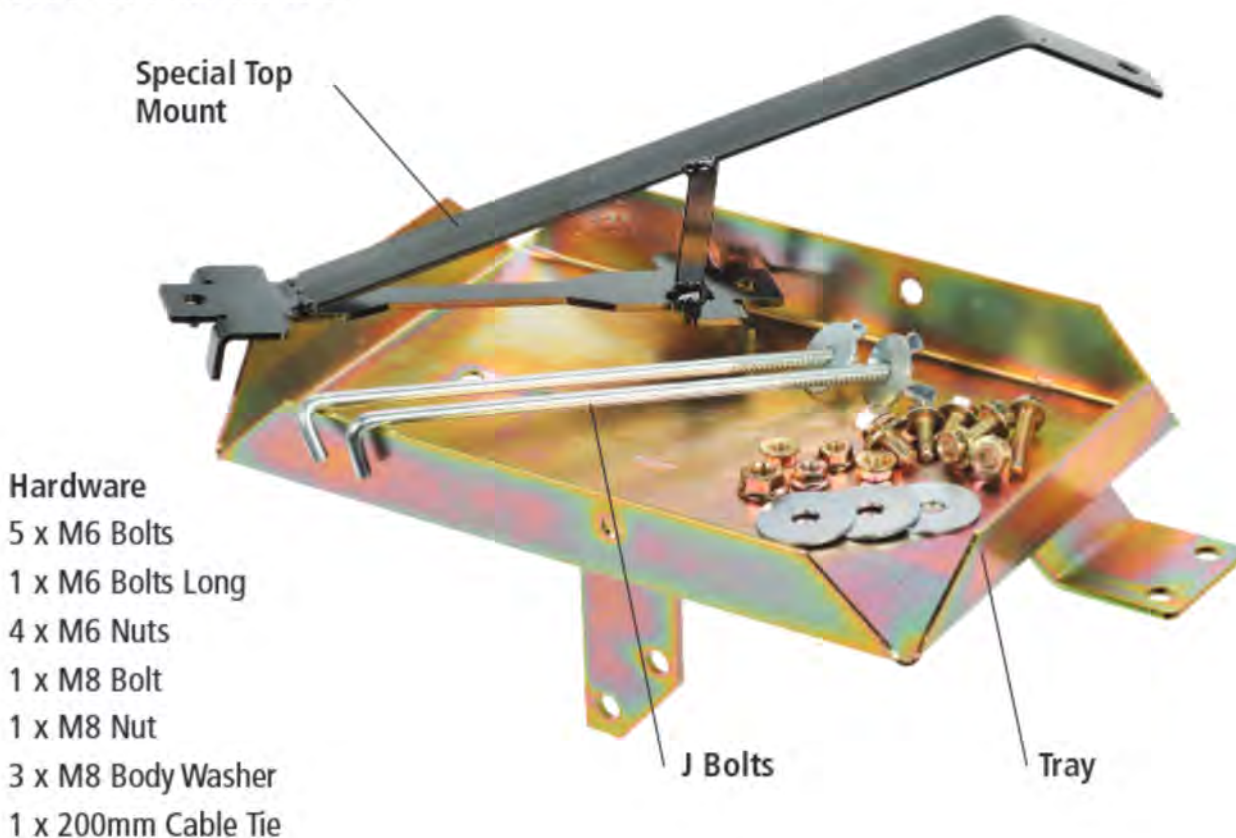
WARNINGS

- Before installation, make sure that the vehicle is stationary and the wheels chocked.
- Be careful when laying wires, not to cause any electrical shorts or wire breakage.
- After installation ensure the bonnet can close without hitting the newly installed battery and battery tray.

SPECIFICATIONS

Max Battery Size (mm)	L265 x W174 x H200
Max Battery Weight	19.6Kg
Recommended batteries	Optima D34 & Exide Orbital (Fully Sealed AGM type due to close proximity to wiring and computer)
Approximate fitting time	1.5 hours
Special tools	Right Angle Drill
Recommended Dual Battery System	P/n: IDC25, DBC100, DBC150, VSR100, VSR200
Tray Location	Engine Bay, Passenger side near firewall

KIT INCLUDES



FITTING INSTRUCTIONS

1. Make sure that the vehicle is stationary, the engine is switched off and cool. Disconnect the positive and negative battery terminal from the main battery.
2. Remove original starting battery
3. Unclip the wiring looms from around the battery and firewall.



4. The white loom bracket on the firewall will need to be bent up for fitting of the battery.



5. The metal pipe that runs under the scuttle panel will require manipulating to fit battery.

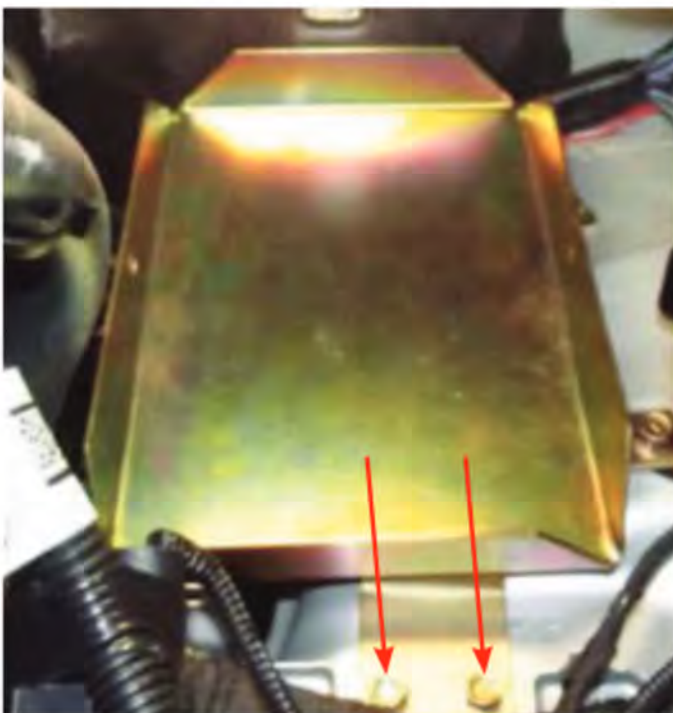
6. Unbolt and cut off mounting bracket for fuel lines leaving the fuel line connected to each other and re-route fuel lines behind fuel filter and filter mount.



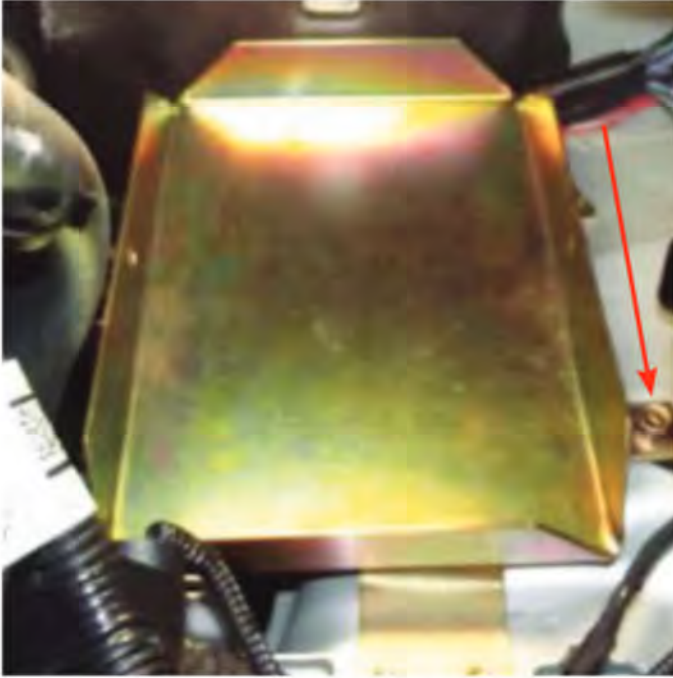
7. Place tray in position cable tie the fuel lines to the bracket indent in the tray.



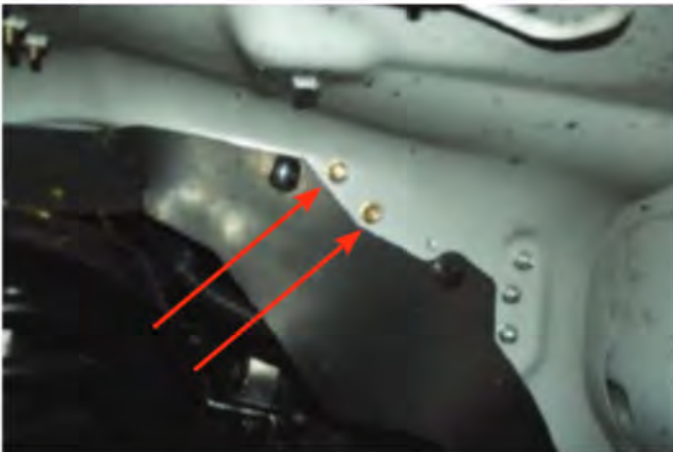
8. Manoeuvre tray into the correct position by lining up the 2 x M6 bolt holes directly behind the original battery tray. Do not tighten bolts.



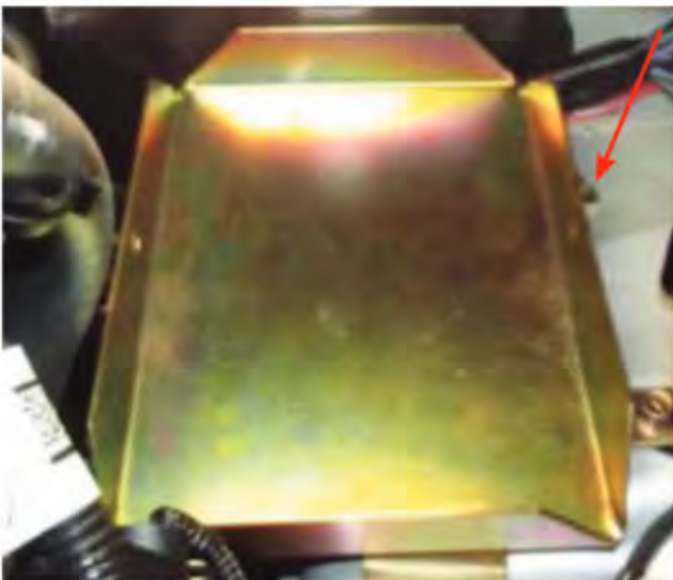
9. Locate and hand tighten 1 x M6 Bolt, Nut and Washer through the hole next to fuel filter.



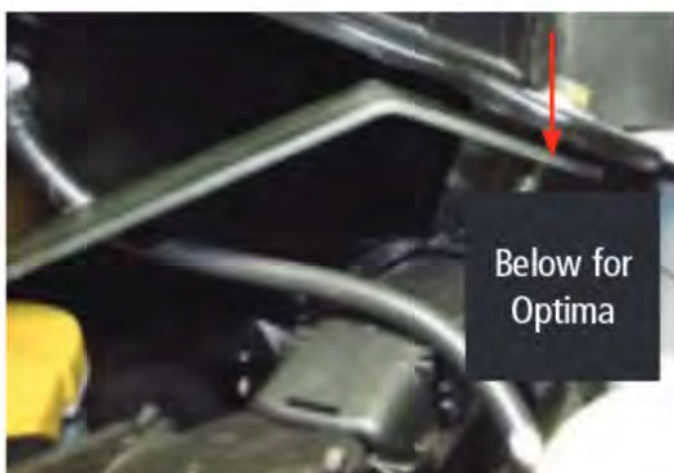
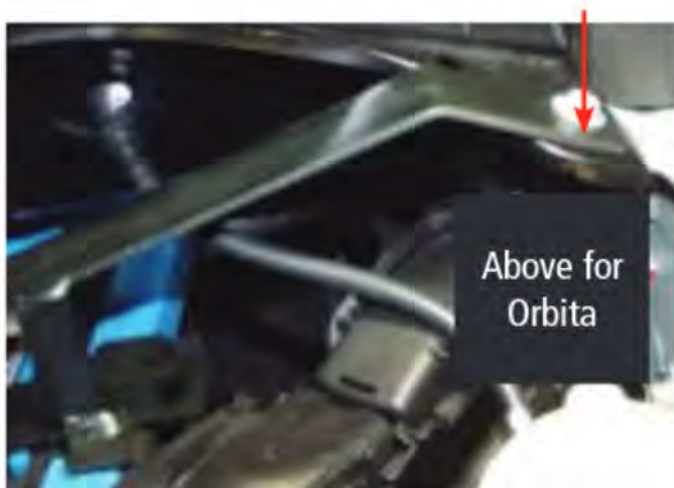
10. Locate and tighten 2 x M6 Bolts and nuts through inner guard and lower tray arm.



11. Using a right angle drill, and an 8mm drill bit. Drill through the rear tab on the tray behind the fuel filter into the inner guard. BE CAREFUL NOT DAMAGE FUEL LINES OR WIRING LOOMS



12. Using M8 Bolt push through the drilled hole through tray and inner guard tighten the underside using M8 body washer and M8 nut.
13. Tighten all bolts and nuts connecting the tray to the car.
14. Fit the negative terminal and cable to the battery, then install the battery with the negative terminal to rear of tray. **DO NOT INSTALL BATTERY WITH POSITIVE TERMINAL TO REAR**
15. Unbolt scuttle panel bolt and use 1 x M6 Bolt long and nut in the following ways:
 - a. Exide Orbital – Top mount sits above the scuttle panel use bolt and washer.
 - b. Optima D34 – Top mount sits under scuttle panel.



16. Fit J bolts and tighten the wing nuts.



17. Refit factory battery.
18. Reconnect the positive then the negative battery terminal to the main starter battery. Before closing the bonnet make sure the battery and tray do not hit the bonnet.

For assistance throughout the installation procedure please call our customer service representatives on 1800 113 443.

WARRANTY STATEMENT

APPLICABLE ONLY TO PRODUCT SOLD IN AUSTRALIA

Brown & Watson International Pty Ltd of 1500 Ferntree Gully Road, Knoxfield, Vic., telephone (03) 9730 6000, fax (03) 9730 6050, warrants that all products described in its current catalogue (save and except for all bulbs and lenses whether made of glass or some other substance) will under normal use and service be free of failures in material and workmanship for a period of one (1) year (unless this period has been extended as indicated elsewhere) from the date of the original purchase by the consumer as marked on the invoice. This warranty does not cover ordinary wear and tear, abuse, alteration of products or damage caused by the consumer.

To make a warranty claim the consumer must deliver the product at their cost to the original place of purchase or to any other place which may be nominated by either BWI or the retailer from where the product was bought in order that a warranty assessment may be performed. The consumer must also deliver the original invoice evidencing the date and place of purchase together with an explanation in writing as to the nature of the claim.

In the event that the claim is determined to be for a minor failure of the product then BWI reserves the right to repair or replace it at its discretion. In the event that a major failure is determined the consumer will be entitled to a replacement or a refund as well as compensation for any other reasonably foreseeable loss or damage.

This warranty is in addition to any other rights or remedies that the consumer may have under State or Federal legislation.

IMPORTANT NOTE

Our goods come with guarantees that cannot be excluded under the Australian Consumer Law. You are entitled to a replacement or refund for a major failure and compensation for any other reasonably foreseeable loss or damage. You are also entitled to have the goods repaired or replaced if the goods fail to be of acceptable quality and the failure does not amount to a major failure.

Distributed by

AUSTRALIA

Brown & Watson International Pty Ltd

Knoxfield, Victoria 3180

Telephone (03) 9730 6000

Facsimile (03) 9730 6050

National Toll Free 1800 113 443

NEW ZEALAND

Narva New Zealand Ltd

22-24 Olive Road

PO Box 12556 Penrose

Auckland, New Zealand

Telephone (09) 525 4575

Facsimile (09) 579 1192