

Installation instructions for Karma Batlow Salon Chair

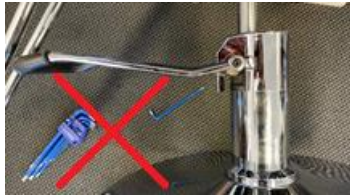
Thank you for purchasing the Batlow Reclining Salon Chair. Please remove all items carefully from the carton and discard the unwanted backing.

The first step is to connect the hydraulic to the base, there are 6 bolts that go through the bottom of the base and into the hydraulic. Start all the bolts first before funny tightening.

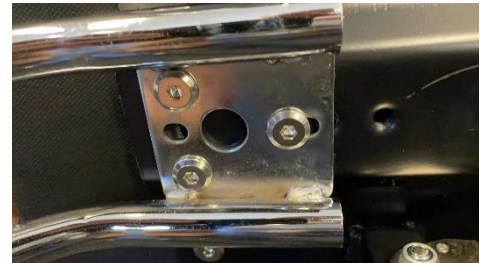


Put the base flat on the floor and tap the locking pin into the top of the hydraulic, the pin has one tapered end, this end goes in and you only need to tap it in around half way. If you find this step too difficult it is not essential for the regular operation of the chair and can be left out. It only stops the chair rotating on the hydraulic when the hydraulic is in the lock position and the chair will usually lock onto the hydraulic once it has been used.

Next put the stepper onto the top of the hydraulic and tighten the grub screws on either side to secure it. Make sure you put the stepper on correctly or it will not work correctly (see images below)



Next attach the foot rest (if required) by removing the screws from the under side of the chair where it connects to, put the foot rest in place and put the screws back in place. Start all screws first before tightening.



Sit the chair on top of the hydraulic and line up the locking pin with the groove in the base plate under the chair (if the locking pin has been fitted).



Remove the 4 screws from the back of the chair and the one from the bracket holding the cover plate in place. Sit the back in place and replace the screws taken from the back ensuring you have the cover on as well. Start all the screws first before tightening. Also ensure you have the back straight and aligned correctly.

