

**Your restoration deserves the best!**  
See the entire Ultradent restoration product line

**VALO™**  
GRAND



**VALO™ Curing Light**

All VALO curing lights use a custom, multiwavelength light-emitting diode (LED) for producing high-intensity light at 385–515 nm, which is capable of polymerizing all lightcured dental materials.

True unibody construction from a single bar of tempered, high-grade aerospace aluminum ensures durability, superior heat dissipation, and a streamlined design that allows the VALO light to access areas of the mouth other curing lights simply can't reach. The optimally collimated beam delivers consistent, uniform power.



**5-year warranty.**  
Unique glass lens system forms the light's collimated blended beam.



**Uvener™**  
dental art made simple



**Uvener™ Template System**

The unique, minimally invasive Uvener template system helps clinicians create beautiful direct composite veneers with predictable shape and symmetry. Each template mimics natural dentition and is designed to create high-quality, natural-looking anterior restorations in one visit. The system can also be used to create cosmetic mock-ups and shade selection as well as temporaries during porcelain veneer creation.

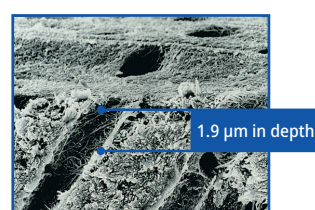


**ULTRA-ETCH™**  
35% Phosphoric Acid Etchant



**Ultra-Etch™ Etchant**

- Reduces the risk of over-etching
- Penetrates the smallest fissures, but won't run on a vertical surface
- Precise placement
- Rinses cleanly—leaves no residue



**PEAK™**  
UNIVERSAL ADHESIVE SYSTEM



**Peak™ Universal Bond Adhesive**

Peak Universal Bond adhesive is the strongest adhesive on the market. It features Ultradent's Dyme Tech™ phosphate monomer blend for enhanced strength and greater versatility and bonds to dentin, enamel, porcelain, metal, composite, acrylic, and zirconia. It is ideal for direct and indirect bonding, as well as post and core procedures.



**Composite Wetting Resin**

- Facilitates composite adaptation
- Will not inhibit composite polymerization
- Moistens dry composite during contouring

**Jiffy™**



**Jiffy™ / Jiffy HiShine / Jiffy Brush**

- Excellent for adjusting or polishing composite restorations
- Ultradent grit gives a beautiful finish on any composite material
- Jiffy™ HiShine polishers are impregnated with diamond powder

Each bristle contains thousands of silicon carbide polishing particles allowing access to occlusal fissures.



Jiffy™ Composite Polishing Brushes

**Why is FORMA composite the perfect choice for both anterior and posterior restorations?**

FORMA composite is available in a full range of shades with ideal translucency, opacity, and fluorescence when compared with the natural characteristics of the tooth. FORMA composite's excellent optical properties enable clinicians to reach the ideal balance between esthetics of direct restorations and dental substrates with the use of only one body color (OneStepColor), or through a combination of dentin, enamel, and effect shades for more specific procedures.

A zirconia nano-hybrid formula gives FORMA composite excellent mechanical properties, high strength, and excellent working consistency. It is easy to sculpt and simple to polish, offering beautiful final esthetics.

**FORMA composite kits and colors**

← + More opaque — →

Dentin	Body	Enamel	Effect Colors	Whitened Teeth
● A1D	● A1B	● A1E	● Incisal	● WD
● A2D	● A2B	● A2E	● Transparent	● WB
● A3D	● A3B	● A3E	● Opaquer	● XWB
	● A3.5B	● A3.5E		● WE
	● A4B	● A4E		● XWE
	● B1B	● B1E		
	● B2B	● B2E		
	● C1B	● C1E		
	● C2B	● C2E		
● WD	● WB	● WE		
	● XWB	● XWE		



**FORMA 5-syringe kit:**  
1 x 4 g syringe, color A1B  
2 x 4 g syringe, color A2B  
1 x 4 g syringe, color A3B  
1 x 4 g syringe, color A3.5B

**FORMA Refill:** 1 x 4 g syringe



Ultradent



ultradentproducts



Ultradent



**Forma™**  
ZIRCONIA NANO-HYBRID COMPOSITE



Zirconia nano-hybrid resin



Natural fluorescence



Simple handling and polishability

**OneStepColor**

## FORMA composite, the best choice for any restoration!

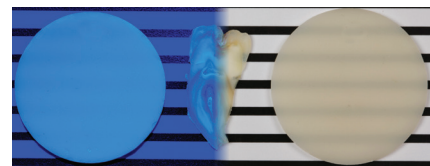
FORMA composite offers natural tooth color with just one body shade (OneStepColor) or for restorations that require layering, there are dentin, enamel, and effect shades with different degrees of translucency. Its formula, consisting of zirconia and yttrium trifluoride, allows all shades to offer excellent optical and mechanical properties: translucency, opacity, fluorescence, and strength.

### Consistency



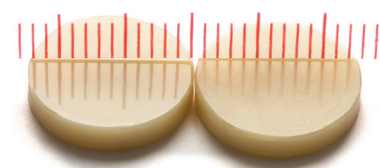
- Smooth and easy to sculpt
- Does not stick to instruments
- Won't slump out of place
- Ample working time

### Natural Fluorescence



- Ideal balance between translucency and opacity
- Fluoresces similar to natural teeth

### High Gloss



Initial appearance and after 10,000 brushing cycles

- Simple to polish
- Beautiful esthetics
- High polish retention

### Versatility:

**Anterior Teeth:** FORMA composite offers the ideal balance of translucency between enamel and dentin, efficiently providing the same esthetic results in just a few layers that other composites provide with long layering procedures. It is also smooth and easy to sculpt.

**Posterior Teeth:** FORMA composite has a larger filler load and exhibits excellent mechanical properties, giving it the strength necessary for posterior restorations.

FORMA composite can also be used for indirect restorations of veneers, inlays, and onlays.



Ergonomic handle protects the thread of the syringe, reducing the risk of contamination.

### Total control with just one hand!

The lid is attached to the body of the syringe for simple opening and closing and the wide handle allows for simple, one-hand handling.



**KleenSleeve™** is an intelligent inner lining that protects the composite in the tube.

Color laser printing on the body of the syringe preserves important information (which normally disappears on other conventional syringes), and helps enhance the maintenance of a cleaner and more hygienic work environment.

### Diastema Closure

*Fernando Rigolin and Dr. Rafael Beolchi*

1. Patient's smile, exhibiting multiple gaps between central and lateral incisors
2. Close-up view of gaps in the upper arch
3. Restoration with only one body color (A1B)
4. FORMA composite shows an excellent balance between opacity and translucency

### OneStepColor

FORMA composite color used:



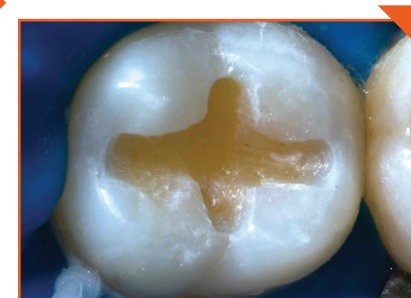
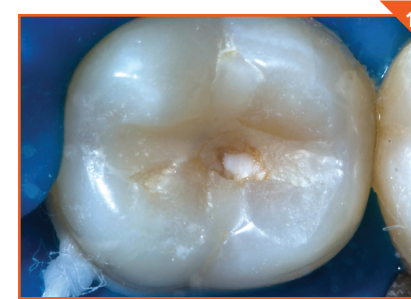
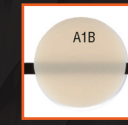
### Class I Restoration

*Dr. Fabio Salomão and Dr. Laura Franco*

1. Compromised restoration
2. The Black Light lens of the VALO curing light shows the composite that needs to be removed
3. After composite has been removed and bonding procedure has begun
4. Class I restoration using A1B with the OneStepColor placement

### OneStepColor

FORMA composite color used:

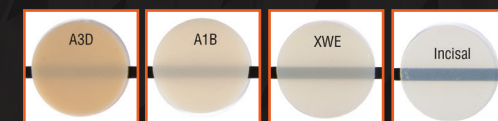


### Diastema Closure:

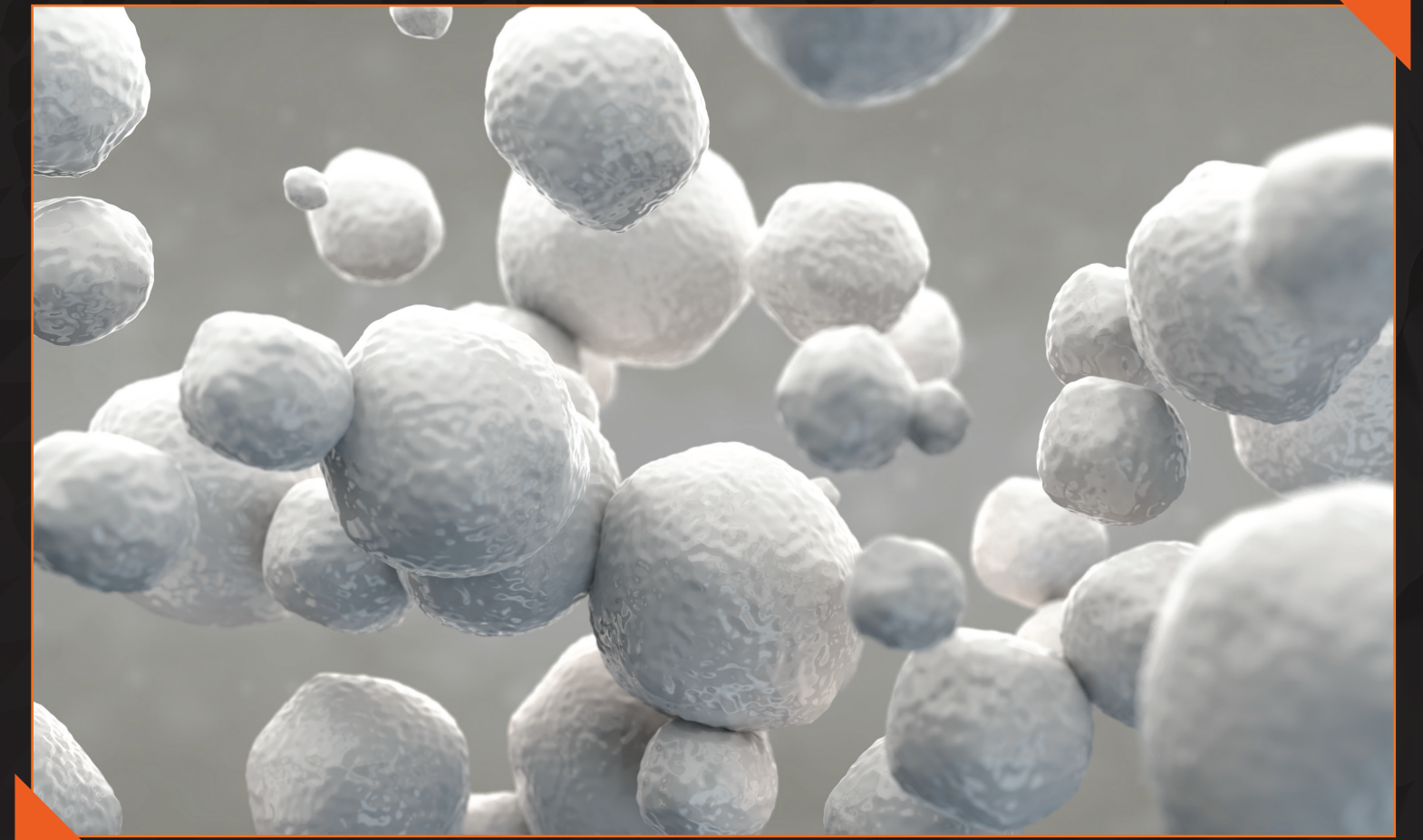
*Dr. Rafael Calixto*

1. Diastemas on upper and lower arches
2. Intraoral view
3. Shades A3D, A1B, XWE, and Incisal were used on the central incisors. For the lateral incisors and canines, A1B and XWE were used.
4. Final appearance of the smile

FORMA composite colors used:



## Proprietary Zirconia Particle Technology



FORMA composite features a zirconia nano-hybrid formula that allows for an exceptionally durable restoration with better initial and retained gloss. The silanated zirconia particles in FORMA composite are rounded, giving a beautiful high gloss finish and enhanced durability to the restoration—making FORMA composite ideal for both anterior and posterior applications.



### DR. RAFAEL CALIXTO

FORMA composite allows management of various opacities to reproduce different dental characteristics, both in simple and advanced restorations.



### DR. NEWTON FAHL

FORMA composite offers a wide range of layering options to solve from the simplest to the most polychromatic cases, and its consistency allows precise modeling of each layer.



### DR. RAFAEL BEOLCHI

FORMA composite demonstrates a working consistency that facilitates both the sculpting of anatomical details in posterior teeth and control over the thickness of the layers of resin in anterior teeth, essential for esthetic restorations.