



14

Laboratory

Laboratory

Laboratory Instruments p.245 - p.246

Laboratory Materials p.247 - p.259





Laboratory

Laboratory Instruments

Hand Instruments

ERGO Acryl

/ Renfert

✓ *Precise Facings*

- **Function & Performance:**
Double-sided modeling instruments ideal for acrylic facings
- **Advantages:**
 - Three individual flexible blades, 0.2mm thick
 - Flexible blades are secured to the instrument handle by a threaded connection and can be easily exchanged, as required
 - Ideal for applying and modeling modern facing acrylics



ERGO Acryl Instruments

Type	Packing	Item no.
No.1		RF-1052-1100
No.2	1's/ pack	RF-1052-1200
No.3		RF-1052-1300

Flexible Blade Tips

Type	Packing	Item no.
No.1		RF-1052-1110
No.2	2's/ pack	RF-1052-1210
No.3		RF-1052-1310

ERGO Wax Instruments

/ Renfert

✓ *The All-Purpose Instrument*

- **Function & Performance:**
 - ERGO wax instruments are characterised by the wide variety of applications for which they can be employed and by their individual adaptability
 - The modern handle design is different for each instrument, thus making them unique
- **Advantages:**
 - Instruments can be ground according to individual needs
 - Probes, blades and scrapers made from handground stainless steel
 - Fine, anodised handles, comfortable to hold, heat-resistant and insulated



Type	Packing	Item no.
No.1		RF-1034-2001
No.2	1's/ pack	RF-1034-2002
No.3		RF-1034-2003

Type	Packing	Item no.
No.4	1's/ pack	RF-1034-2004
No.5		RF-1034-2005

ERGO Ceramic

/ Renfert

✓ *The Precision Instruments*

- **Function & Performance:**
Double-sided special instruments for modelling porcelain with three replaceable instrument tips



- Instrument No.1:

- Large blade for separating and reducing (replaceable)
- A large claw scraper for precise resection when modelling the tooth shape

- Instrument No.2:

- Fine nerve needle for creating fissures and enamel cracks (replaceable)
- Small blade for working on areas which are difficult to reach (replaceable)



ERGO Ceramic Set with 2 Instruments

Packing	Item no.
Each	RF-1161-1000

ERGO Ceramic Instruments

Type	Packing	Item no.
No.1	1's/ pack	RF-1161-1100
No.2		RF-1161-1200

Spring Tips

Type	Packing	Item no.
Large Blade		RF-1161-1110
Small Blade	2's/ pack	RF-1161-1210
Fine Nerve Needle		RF-1161-1220



Laboratory Instruments

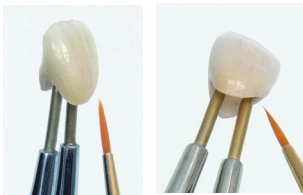
Holders

JACKET-GRIP Tweezers / Renfert

✓ Tweezers For A Secure Hold On Crowns And Bridges



- Replaceable, fine diamond tips
- Elliptical shapes ensures secure hold and no damage to edges even in narrow crowns
- Thumb-screw allows individual, infinitely variable setting on crown diameter
- Overload (cracks, splits) is avoided by reduced spring tension



Packing	Item no.
Each	RF-1105-0300

KERAMOG RIP Tweezers Angled / Renfert

✓ Holders For Crowns And Bridges During Porcelain Or Acrylic Work



- Replaceable, fine diamond tips
- Minimal damage to crown edge due to elliptical shape
- Finely graduated gripping ratchet
- Areas of use: building-up, condensing, staining or marking approximal contact points
- Ideal for full porcelain reconstructions

Items	Packing	Item no.
KERAMOG RIP, Curved	Each	RF-1109-0300
Replacement Tips	2's/pack	RF-1109-0100

Brushes

Ceramicus Staining Brush Set / Renfert



- A brush tip which remains perfectly formed
- Sufficient tension force for picking up larger amounts of porcelain
- Moistening the porcelain powder optimally
- Build up interdental regions without the use of a metal instrument
- Direct working procedures; no need to rinse continually, saves time and allows concentrated working
- The custom grain of the wooden handle makes every Ceramicus unique



Packing	Item no.
2 each of #00 & #000	RF-1703-0000

Uni Brush / Shofu

- Designed for universal application



Type	Packing	Item no.
2	- 1 x Handle	SF-1585
4	- 10 x Tips	SF-1586

Mixing Trays

STAIN-MIX Mixing Trays / Renfert



- Porcelain mixing palette for stains with transparent or black lid
- 30 small wells for stains
- 1 large well for glaze
- Available with a black lid for light-curing stains
- Dimension (W x H): 155 x 95mm

Lid Color	Packing	Item no.
Black	Each	RF-1065-0100

Articulator

HENRY SCHEIN® Articulator Full Arch EE-#8 Chrome / Henry Schein

- Create a smooth surface and high luster



Packing	Item no.
Each	HS-100-0055



Anaesthetics
Articulating
Bur and Abrasives
Cosmetics
Diagnostic
Disposables
Endodontics
Equipment
Handpieces
Implant
Infection Control
Instruments
Isolation
Laboratory
Oral Surgery
Orthodontics
Patient Education and Gift
Pedodontics
Periodontal
Post and Core
Preventive
Prosthodontics
Restorative
Uniform



Laboratory

Laboratory Materials

Ceramics & Accessories

Porcelain Systems

/ Shofu



Vintage Modelling Liquid

✓ Used instead of distilled water for precise build up of Vintage/Vintage Halo porcelain

Benefits & Features

- Increases working time keeping the porcelain moist much longer
- Easier handling for a precise build-up
- Can be mixed with distilled water to adjust the consistency of the mix
- The firing schedule of Vintage Halo porcelain does not need to be changed when the modeling liquid is used

Packing	Item no.
500 mL/bottle	SF-7015



Vintage Porcelain

✓ A highly aesthetic porcelain restoration with a wide variety of applications for metal-free and metal-reinforced restorations like crowns, bridges, veneers and etc.

Benefits & Features

- Exhibits opalescence and fluorescence similar to natural teeth
- Excellent colour stability even after repeated firings
- Masking opaques are effective even when applied in thin layers
- Natural and aesthetic restoration created by using Effect Colours



Vintage Porcelain Powder "Opaque"

Packing: 15g/50g per bottle

Shade				
PA10	PA20	PA30	PA3.50	PA40
PB10	PB20	PB30	PB40	PC10
PC20	PC30	PC40	PD20	PD30
PD40				

Vintage Opaque Dentin Powder

Packing: 15g/50g per bottle

Shade				
OD A1	OD A2	OD A3	OD A3.5	OD A4
OD B1	OD B2	OD B3	OD B4	OD C1
OD C2	OD C3	OD C4	OD D2	OD D3
OD D4				

- Anaesthetics
- Articulating
- Bur and Abrasives
- Cosmetics
- Diagnostic
- Disposables
- Endodontics
- Equipment
- Handpieces
- Implant
- Infection Control
- Instruments
- Isolation
- Laboratory
- Oral Surgery
- Orthodontics
- Patient Education and Gift
- Pedodontics
- Periodontal
- Post and Core
- Preventive
- Prosthodontics
- Restorative
- Uniform



Laboratory Materials
Ceramics & Accessories

Vintage Halo

- ✓ Used instead of distilled water for precise build up of Vintage/Vintage Halo porcelain
- ✓ Easy to simulate the appearance and vitality of natural teeth with such prosthesis

- ✓ Highly compatible to a wide range of alloys and also has tolerance for alloys containing up to 50% sliver
- ✓ Low firing temperature of 900°C

Vintage Halo Porcelain Powder

Packing: 15g/50g per bottle

	Shade
Opaque (15g/50g per bottle)	A10, A20, A30, A3.50, A40, root AO B10, B20, B30, B40, root BO, C10, C20, C30, C40, root CO, D20, D30, D40
Add-On (15g per bottle)	Add-On T, Add-On B
Color Effect (15g/50g per bottle)	White, Orange, Brown, Red Dark, Red Light, Mamelon Pink, Memelon- Yellow, Blue Glass, Blue T, Yellow T
Body (15g/50g/200g per bottle)	A1B, A2B, A3B, A3.5B, A4B, root AB, B1B, B2B, B3B, B4B, root BB, C1B, C2B, C3B, C4B, root CB, D2B, D3B, D4B
Incisal (15g/50g/200g per bottle)	57, 58, 59, 60, T, T-GLASS



Vintage Halo Opaque Dentine Powder

Packing: 15g/50g per bottle

	Shade
Opaque Dentin	OD A1, OD A2, OD A3, OD A3.5, OD A4, OD root A, OD B1, OD B2, OD B3, OD B4, OD root B, OD C1, OD C2, OD C3, OD C4, OD root C, OD D2, OD D3, OD D4

Vintage Halo Opal Porcelain Powder

Packing: 15g/50g/200g per bottle

	Shade
Opal Porcelain	57, 58, 59, 60, T, Superlucant, Amber, Occlusal, White E, Milky



Laboratory

Laboratory Materials

Ceramics & Accessories

Vintage MP

- ✓ *Vintage MP is a new generation of metal bond porcelain, designed with the latest discoveries in porcelain technology*
- ✓ *The ultra-fine micro porcelain is adapted to the diffused light reflection of natural enamel and dentin*
- ✓ *The light optical properties of natural teeth are simple reproduced, and the contours of the opaquel metal frame are optically minimized*

- ✓ *One advantage of an increase of the diffused light reflection of the dentin powders is that a greater part of the indirect light is not being refracted or spread by the opaquer, but is already in the dentin layer*

Benefits & Features

- Effortlessly build a 1.0mm PFM
- Exceptionally wide CTE range
- Extremely fine and dense paste opaques
- Enhanced bonding strength for all PFM alloys
- Easily simulates the wear of natural dentition



Reference: Vintage MP Color Chart

SHADE	W0	W1	W2	W3	A1	A2	A3	A3.5	A4	rootA	B1	B2	B3	B4	C1	C2	C3	C4	D2	D3	D4
BASE OPAQUE											BASE										
SHADE OPAQUE	W00	W10	W20	W30	A10	A20	A30	A3.50	A40	rootA0	B10	B20	B30	B40	C10	C20	C30	C40	D20	D30	D40
CERVICAL										AC				BC						DC	
MARGIN	W0M	W0M:2 NM:1	W0M:1 NM:2	NM	A1M	A2M	A3M	A3.5M	A4M	rootAM	NM:1 B2M:1	B2M	B2M:1 B4M:1	B4M	NM:1 C2M:1	C2M	C2M:1 C4M:1	C4M	NM:1 D3M:1	D3M	D3M:1 B4M:1
OPAQUE DENTIN	OD-W0	OD-W0:2 OD-N:1	OD-W0:1 OD-N:2	OD-N	OD-A1	OD-A2	OD-A3	OD-A3.5	OD-A4	OD-rootA	OD-N:1 OD-B2:1	OD-B2	OD-B2:1 OD-B4:1	OD-B4	OD-N:1 OD-C2:1	OD-C2	OD-C2:1 OD-C4:1	OD-C4	OD-N:1 OD-D3:1	OD-D3	OD-D3:1 OD-B4:1
BODY	W0B	W1B	W2B	W3B	A1B	A2B	A3B	A3.5B	A4B	rootAB	B1B	B2B	B3B	B4B	C1B	C2B	C3B	C4B	D2B	D3B	D4B
OPAL ENAMEL	OPAL55	OPAL56	OPAL56:2 OPAL57:1	OPAL56:1 OPAL57:2	OPAL57	OPAL58	OPAL59	OPAL59:1 OPAL60:1	OPAL60	OPAL60	OPAL57	OPAL58	OPAL59	OPAL60	OPAL58	OPAL59	OPAL60	OPAL58	OPAL59	OPAL60	
INCISAL																					
TRANSLUCENT																					

OPAQUE MODIFIER	OM-G	OM-O	OM-R	OM-Y	OM-BG	OM-LP	OM-DP			
OPAL ENAMEL	OPAL55	OPAL56	OPAL57	OPAL58	OPAL59	OPAL60				
INCISAL	57	58	59	60						
CERVICAL TRANS	CT-A	CT-B	CT-R	CT-W	CT-CL					
COLOR EFFECT	MP	Miv	MY	RED	O	Y	G	W	Br	Bl
GUM COLOR	GUM-LP	GUM-DP	GUM-Y	GUM-Or						
CORRECTION	ADD-ON B	ADD-ON T	CPM FINE							

SHOFU INC.
*印刷物のため実物とは色調が異なる場合があります。



Laboratory Materials
Ceramics & Accessories

Vintage ZR

RELIABILITY

- Simple and reliable application on all alumina/zirconia frameworks
- Feldspar based micro-ceramic with extraordinary strength
- Excellent bonding characteristics with high fusing Opaque Liner
- Stable CTE, even after several firings
- Less abrasion on opposing natural teeth

EFFICIENCY

- Predictable aesthetics with a simple two layer build-up technique
- Homogenous, dense surfaces with low firing shrinkage
- Remarkable handling characteristics
- Logically co-ordinated colour concept for both porcelain systems

VERSATILITY

- Highly fluorescent Margin and Cervical trans powders
- Opal incisal and effect colours to simulate true opalescence of natural teeth
- Corresponds to VITA classical shade system
- Additional whitening colours



✓ *A high fusing, feldspar based micro-ceramic veneering porcelain system that offers a comprehensive selection of unique shades that facilitate simple and efficient fabrication of life-like zirconia restorations with excellent colour harmonization to natural teeth*

Benefits & Features

- Recommended for all Zirconia framework materials
- Feldspar based micro-ceramic with extraordinary high strength
- Excellent colour reproduction to match natural teeth
- Extensive range of translucent, opalescent and effect shades
- Minimized wear on opposing teeth
- Easy application technique
- Opaque Liner to mask non-vital teeth or metal framework
- Cervical translucent compounds with a lower melting temperature and higher fluorescence for aesthetic and biocompatible marginal areas

Vintage ZR Opaque Liner

Packing: 5g/bottle

	Shade
Opaque Liner	A10, A20, A30, A3.5O, A40, root AO B10, B20, B30, B40, C10, C20, C30, C40, D20, D30, D40, W10, W20, W30

Vintage ZR Margin Porcelain Powder

Packing: 15g/bottle

	Shade
Margin Porcelain	A3M, B2M, B4M, C2M, C4M, D3M, CLM, NM, ROOTAM, W1M

Vintage ZR Porcelain Powder

Packing: 15g/bottle

	Shade
Cervical Trans	CTCL (Translucent), CTW (Whitish Translucent) CTA (Orangish Translucent), CTB (Yellowish Translucent), CTR (Reddish Translucent)
Corrections	Add-On B , Add-On T , CPM Fine
Enamel Effect	BT (Blue Translucent), OT (Orange Translucent), PT (Pink Translucent), GRAY T (Gray Translucent), T GLASS (Translucent Glass)
Gum	Light Pink , Dark Pink
Opaque Dentin	ODN , ODA3 , ODRTA , ODB2 , ODB4 , ODC2 , ODC4 , ODD3 , ODW1
Opal Effect	T (Translucent), SL (Superluculent), OC (Occlusal), WE (White Enamel), MI (Milky), AM-R (Amber Red), AM-Y (Amber Yellow), AMV (Amber Violet)
Color Effect	MP (Mamelon Pink), MY (Mamelon Yellow), MIV (Mamelon Ivory), R (Red), Y (Yellow), O (Orange), G (Grey), W (White)

Packing: 50g/bottle

	Shade
Body	A1B, A2B, A3B, A3.5B, A4B, root AB, B1B, B2B, B3B, B4B, C1B, C2B, C3B, C4B, D2B, D3B, D4B, W1B, W2B, W3B
Opal Incisal	OPAL 56, OPAL 57, OPAL 58 OPAL 59, OPAL 60



Laboratory

Laboratory Materials

Ceramics & Accessories

Vintage Art

✓ *Vintage Art fluorescent porcelain stains have been specially created for internal or external application to modify shades and easily reproduce individual characterizations of various types of dental ceramic.*

These stains are complemented with a ready to use highly fluorescent Glazing paste that supports a more life-like colour impression

- Created for ...**
- Porcelain materials with different co-efficient of thermal expansion, such as:
 - 1) PFM porcelains,
 - 2) Alumina porcelain,
 - 3) Zirconia porcelain
 - Alumina Cores
 - Zirconia Frames
 - Pressable Ceramics
 - CAD/CAM Ceramic Blocks



Vintage Art Basic Color Set

Content	Item no.
- 17 x Color Powders (3 g) - 1 x Stain Liquid (50 mL)	- 1 x Glazing Paste (3 g) - Instructions SF-6510

Vintage Art Stain Shade Refills

Packing: 3g/bottle

	Shade
Basic Colors	Pink, Yellow, Blue, Orange, Violet, Green, Black, White, Dark Red Brown, Orange Brown, Khaki, Shade A, Shade B, Shade C, Shade D, Shade R
Effect Colors	Grey, Blue-Grey, Corn Yellow, Brown, Black Brown, Mamelon Pink, Mamelon Ivory, Rose Pink, Wine Red, Pink Orange, Foundation Shade A, Foundation Shade B, Foundation Shade C, Foundation Shade D, Foundation Shade R

- Reference: Vintage Art Color Chart

Basic Colors

Color	Color	ADJUSTMENT	TEMPERATURE	SHADE	WORKING	VIEW
Pink*1						
Yellow*1						
Blue*1						
Orange*1						
Violet*1						
Green*1						
Black						
White						
Dark Red Brown						
Orange Brown						
Khaki						
A shade*2						
B shade*2						
C shade*2						
D shade*2						
R shade*2						

Effect Colors

Color	Color	ADJUSTMENT	TEMPERATURE	SHADE	WORKING	VIEW
Gray						
Blue Gray						
Corn Yellow						
Brown						
Black Brown						
Mamelon Pink						
Mamelon Ivory						
Rose Pink						
Wine Red						
Pink Orange						
F-A shade*2						
F-B shade*2						
F-C shade*2						
F-D shade*2						
F-R shade*2						



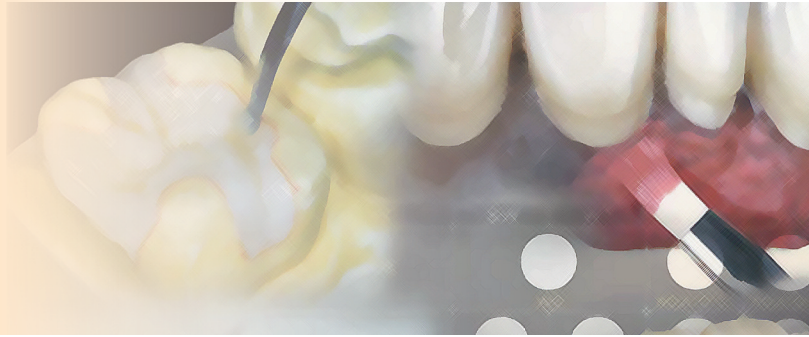


Laboratory Materials

Light-Curing Materials

Ceramic Polymer Systems

/ Shofu



■ Solidex

✓ *Light-cure Ceramic Polymer for a diverse range of restorations such as crowns, bridges, veneers, inlay, onlays, implant work, etc.*

Benefits & Features

- Natural colour match harmonising with the Vintage porcelain system
- Porcelain like aesthetics
- Outstanding physical properties
- Excellent handling characteristic, does not stick to instruments
- Simple and consistent light-curing system
- Easy to finish and polish to a high lustre



■ Solidex Refills

Packing: 2 mL/syringe

Shade

Flow Opaque

A10, A20, A30, A3.50, A40, B10, B20, B30, B40, C10, C20, C30, C40, D20, D30, D40, InO, VpO, VrO, PO

Packing: 4 g/syringe

Shade

Body

A1B, A2B, A3B, A3.5B, A4B, B1B, B2B, B3B, B4B, C1B, C2B, C3B, C4B, D2B, D3B, D4B

Cervical

AC1, AC2, BC1, BC2, CC1, CC2, DC1, DC2

Incisal

57, 58, 59, 60

Translucent

T, HVT, LVT

Effect

OC, AM, GUM, WE (White Enamel)

Packing: 1 mL/syringe

Shade

Stains

R (Red), **BI** (Blue), **Y** (Yellow), **B** (Black), **O** (Orange), **W** (White), **G** (Grey), **Br** (Brown), **A-Br** (A-Brown), **B-Br** (B-Brown), **C-Br** (C-Brown), **D-Dr** (Brown), **TC** (T-Clear)





Laboratory

Laboratory Materials

Light-Curing Materials

Ceramage

✓ *A micro-structured ceramic polymer system with a filler content of 73% progressive fine structured filler supported by an organic polymer matrix*

✓ *Indicated for a wide range of anterior and posterior metal reinforced or metal free restorations; crowns and bridges, veneers, jacket crowns, implant supported restorations, inlays, onlays, etc.*

Benefits & Features

- Superior aesthetics with easy reproduction of natural tooth colour
- Excellent flexural and compressive strength
- Remarkable abrasion resistance
- Exceptional handling, non sticky and easy to sculpt
- High elasticity suitable for posterior restorations
- Superb polishability with high plaque resistance and long term colour stability
- Excellent biocompatibility
- Simple polymerisation system with fast application technique
- Ceramage Flow facilitates intricate application of anatomical details and flow into inaccessible areas
- Extensive range of translucent incisal and effect modifiers to further enhance aesthetics



■ Ceramage Refills

Packing: 2 mL/syringe	Shade
Pre-Opaque	--
Opaque	A10, A20, A30, A3.50, A40, B10, B20, B30, B40, C10, C20, C30, C40, D20, D30, D40, root AO, R20, R30, R3.50, MO, BGO, GO, WO, GUM-O
Flowable Composite Resin	F-ODA3, F-59, F-A3B, F-rootAB, FT-Glass

Packing: 4.6g (2.6 mL)/syringe	Shade
Cervical	AC1, AC2, BC1, BC2, CC1, CC2, DC1, DC2
Opaque Dentin	ODA1, ODA2, ODA3, ODA3.5, ODA4, ODB1, ODB2, ODB3, ODB4, ODC1, ODC2, ODC3, ODC4, ODD2, ODD3, ODD4, OD root A, ODR2, ODR3, ODR3.5
Body	A1B, A2B, A3B, A3.5B, A4B, B1B, B2B, B3B, B4B, C1B, C2B, C3B, C4B, D2B, D3B, D4B, root AB, R2B, R3B, R3.5B
Incisal	56, 57, 58, 59, 60, 61
Translucent	T, HVT, LVT, T-Glass, BG, GT, CT-A, CT-B, CT-R, GUM-T
Concentrate	MI, WE, OC, AM-Y, AM-R, AM-V, MY, MP, GUM-L, GUM-D

- Anaesthetics
- Articulating
- Bur and Abrasives
- Cosmetics
- Diagnostic
- Disposables
- Endodontics
- Equipment
- Handpieces
- Implant
- Infection Control
- Instruments
- Isolation
- Laboratory**
- Oral Surgery
- Orthodontics
- Patient Education and Gift
- Pedodontics
- Periodontal
- Post and Core
- Preventive
- Prosthodontics
- Restorative
- Uniform



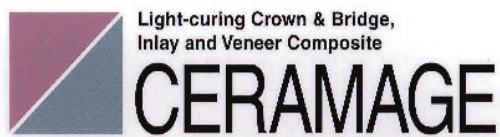
Laboratory Materials
Light-Curing Materials

- Reference: Ceramage Color Chart

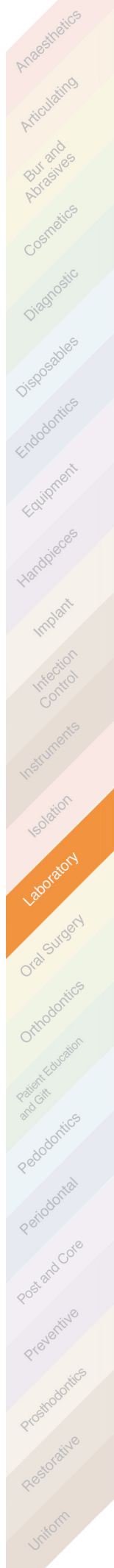
COLOR	W0	W1	W2	W3	A1	A2	A3	A3.5	A4	rootA
OPAQUE	W0	W20	W30	A10	A20	A30	A3.50	A40	rootA0	
CERVICAL						AC1		AC2		
OPAQUE DENTIN					ODA1	ODA2	ODA3	ODA3.5	ODA4	ODrootA
BODY	W0B	W1B	W2B	W3B	A1B	A2B	A3B	A3.5B	A4B	rootAB
INCISAL		56		57	58		59		60	

COLOR	B1	B2	B3	B4	C1	C2	C3	C4	D2	D3	D4
OPAQUE	B10	B20	B30	B40	C10	C20	C30	C40	D20	D30	D40
CERVICAL		BC1	BC2			CC1	CC2		DC1	DC2	
OPAQUE DENTIN	ODB1	ODB2	ODB3	ODB4	ODC1	ODC2	ODC3	ODC4	ODD2	ODD3	ODD4
BODY	B1B	B2B	B3B	B4B	C1B	C2B	C3B	C4B	D2B	D3B	D4B
INCISAL	57	58	59	60	58	59	60	59	60	59	

COLOR	R2	R3	R3.5
OPAQUE	R20	R30	R3.50
OPAQUE DENTIN	ODR2	ODR3	ODR3.5
BODY	R2B	R3B	R3.5B
INCISAL	58	59	



OPAQUE	MO	BO	GO	WO	GUM-O	PreO						
TRANSLUCENT	T	HVT	LVT	T-Glass	BG	GT	CT-A	CT-B	CT-R	GUM-T		
INCISAL	56	57	58	59	60	61						
CONCENTRATE	MJ	WE	OC	AM-Y	AM-R	AM-V	MY	MP	GUM-L	GUM-D	GUM-Or	
FLOWABLE COMPOSITE RESIN	F-T-Glass	F-59	F-ODA3	F-A3B	F-rootAB	F-Br	F-W	F-CT-A	F-BT			
	F-GUM-Br	F-GUM-V	F-GUM-R									





Laboratory

Laboratory Materials

Acrylic Resins

Quick Resin / Shofu

✓ A Chemical Cure Powder-Liquid Type Acrylic Resin

**Fast Setting!
High Strength!**

Quick Resin A (Powder)

Applied for:

- Temporary crown and bridge
- Temporary veneers, and
- Individual tray fabrication for abutment tooth impressions



Type	Shade	Packing	Item
Powder	Enamel	50g/ bottle	SF-QUICK RESIN A-#23
	Dentin		SF-QUICK RESIN A-#29
	Dark Dentin		SF-QUICK RESIN A-#32
Liquid		50g/bottle	SF-QUICK RESIN AB-L

Quick Resin B (Powder)

Applied for:

- Rebasing denture base
- Repair of dentures
- Loosened clasp
- Broken plates
- dislodged or fractured prosthetic teeth
- Extension and projection of denture border, etc.



Type	Shade	Packing	Item
Powder	#U2 (Light Pink)	100g/ bottle	SF-QUICK RESIN B-PU2
	#U3 (Pink) with Fiber		SF-QUICK RESIN B-PU3
Liquid		50g/ bottle	SF-QUICK RESIN AB-L

Quick Resin O

- Fabrication of orthodontic appliances
- Available as clear shade with light-pink liquid



Item	Packing	Item no.
Powder	100 g/bottle	SF-QUICK RESIN O-P
Liquid	50 g/bottle	SF-QUICK RESIN O-L

Urban Powder / Shofu

✓ Heat-Cure Denture Acrylic For Partial And Complete Dentures

- Created in natural shades with accentuated translucency and brightness to suit most clinical cases
- Exhibits superb toughness
- Resistant to discolouration
- No distortion or shrinkage during polymerisation

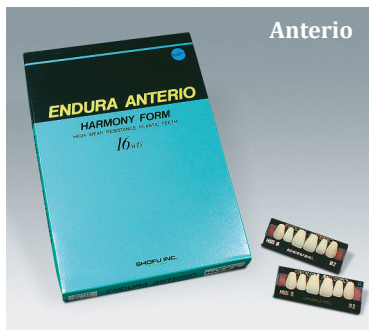


Shade	Packing	Item no.
#2 (Light Pink with Fiber Veins)	10 kg/box	SF-UP-2-10

Artificial Teeth

Endura Teeth / Shofu

✓ Made Of Micro-Particles Filled Resin For Replacing Anterior As Well As Posterior Teeth



Anterio



Posterio

- Exhibits hardness and superior wear resistance
- Available in Vita shades and Harmony form
- Superior toughness
- Easy denture fabrication
- Endura anteriohas opalescent effect similar to that of natural teeth
- Effective grinding characteristics in the posteriors

Anterio (Packing: 6's/set)

Shade	Shape (Lower / Upper)	Size			
		Size 1	Size 2	Size 3	Size 4
A1, A2, A3, A3.5, B2, B3, C3 <i>(Shades available for each shape)</i>	Square	HS3	HS4	HS5	HS6
	Tapering	HT3	HT4	HT5	HT6
	Ovoid	HO3	HO4	HO5	HO6
	Short Square	HSS3	HSS4	HSS5	HSS6
	Combination	HC3	HC4	HC5	HC6

Posterio (Packing: 8's/set)

Shade	Size (Lower / Upper)	
	Size 1	Size 2
A2, A3, A3.5, B3, C3 <i>(Shades available for each shape)</i>	M28	S28
	M30	S30
	M32	S32





HENRY SCHEIN®

Gingival Mask Standard Kit

/ Henry Schein



- Silicone-based gingival mask material
- Ideal for reproducing gingival soft-tissue contours around margins on laboratory models
- 7-minute set time

Content	Item no.
- 2 x Cartridges (50 mL) - 6 x Mixing Tips	HS-104-7922

GI-Ma

/ Coltene &



- Provid
- The A
- for im
- The a
- imagin

- 2 x
- 12 x
- 12 x



Laboratory

Laboratory Materials

Abrasives & Polishing Agents

CoJet™ System / 3M ESPE

✓ Adhesive System For Intraoral Adhesive Repairs



CoJet System Intro Kit



CoJet Sand

Indication

- Intraoral repair of fractured composite or porcelain, even with exposed metal
- Extraoral pretreatment of inlays/onlays, veneers, crowns and bridges, and pins and posts for adhesive luting

Advantages

- Blasting with the CoJet system embeds a ceramic layer on the surface of metal, porcelain or previously cured composite, producing dramatically enhanced bond strengths
- Embedded ceramic layer enables silane coupling with composite for a true chemical bond with alloys and porcelain
- Chairside, intraoral technique allows for highly esthetic repair of porcelain or composite restorations and provides an economical alternative to replacing the restoration. Plus, repairs can be made in one session

CoJet System Intro Kit

Content	Item no.
- 1 x CoJet Sand Bottle (40g)	3M-68421
- 1 x 3M ESPE Sil Primer Bottle (8 mL/bottle)	
- 1 x Visio™ Bond (2.5 mL)	
- 1 x Sinfony™ Opaquer Liquid (8 mL/bottle)	
- 1 x Sinfony™ Opaquer Powder OA3	
- Brush Handles; Disposable Brush Tips; Step-By-Step Card	

CoJet System Refill

Content	Item no.
- 3 x CoJet Sand Bottles (40 g/bottle)	3M-68411

Abrasive / Renfert

COBRA = Aluminium Oxide
ROLLOBLAST = Glass bead

COBRA 110µm (White)

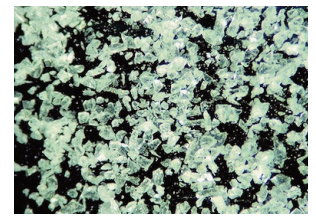
- Mildly abrasive
- Oxide removal/deflasking
- Frame preparation (*precious/non-precious metals*)
- Surface conditioning (*porcelain/acrylic*)
- Preparation for soldering
- Surface conditioning of denture acrylics
- Highly effective in the Vario jet recyclable blasting unit



Packing	Item no.
5 kg/canister	RF-1583-1005

COBRA 50µm (White)

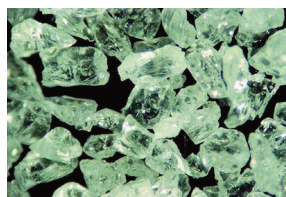
- Gently abrasive
- Gentle oxide removal/deflasking
- Frame preparation (*precious metals*)
- Surface conditioning (*porcelain/acrylic*)
- Cement removal (*precious and non-precious metals*)
- Removing the reaction layer/conditioning prior to etching pressed porcelain



Packing	Item no.
5 kg/canister	RF-1594-1205

COBRA 250µm (White)

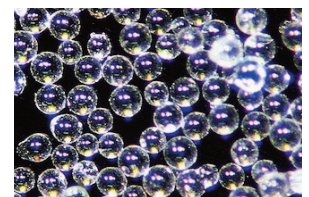
- Highly abrasive
- Removal of heavy oxide layers/deflasking (*non-precious metals*)



Packing	Item no.
5 kg/canister	RF-1585-1005

ROLLOBLAST 50µm

- Surface condensing and silky matte high-lustre finish on occlusal surfaces, in secondary components or crown interiors
- Denture cleaning (*plaster/tooth tartar*)
- Devesting (*pressed porcelain/inlays*)



Packing	Item no.
5 kg/canister	RF-1594-1305





Laboratory Materials

Abrasives & Polishing Agents

die: master / Renfert

✓ *Systematic Die Preparation*



- die:master Die Spacers:

- Extremely steam-proof and scratch-resistant thanks to high density, glass-like die spacer layer
- Generates maximum bond strength between hardener and die spacer due to primer technology
- Die spacer will not puddle on the brush or die, yet it sticks well to line angles due to its extremely thixotropic flowability

- die:master Set:

- Faster and cleaner access to all components of the system thanks to the stand
- Practical, firm base for drying all types of die
- Quick and clean storage with supplied high quality separating brush with magnetic holder

- die:master Duo:

- Cross links the die stone structure for in depth hardness and high edge-strength
- Maximum bond strength thanks to chemical bond to die spacer layer
- 0 µm thickness for a 100% dimensionally stable die

- die:master Thinner:

- Long-term, sustainable varnish quality, even after frequent use
- Controlled regulation of the viscosity because it can be dispensed accurately drop-by-drop

■ **die:master Set (blue)**

Content	Item no.
- 1 x Stand - 2 x die:master (blue) - 1 x die:master thinner - 1 x die:master duo - 1 x picosep - 1 x brush	RF-1956-0900

■ **die:master Die Spacers**

Color	Layer Thickness	Packing	Item no.
Sliver	13 µm	15 mL (0.51 fl.oz.) /bottle	RF-1956-0400
Gold	13 µm		RF-1956-0500
Red	15 µm		RF-1956-0200
Blue	20 µm		RF-1956-0300
Gray	20 µm		RF-1956-0100

■ **die:master Duo**

Layer Thickness	Packing	Item no.
0 µm	30 mL/bottle (1.02 fl.oz.)	RF-1956-0600

■ **die:master Thinner**

Packing	Item no.
30 mL (1.02 fl.oz.)	RF-1956-0700

Isolations & Blockout Materials

PICOSEP Separating Agent / Renfert

✓ *Thin, Silicon Based Isolating Agent - Specially Developed For Wax - Dipping Techniques*



- Function & Performance:

- Thin, silicone based isolating agent - specially developed for wax-dipping techniques

- Advantages:

- Microfilm isolates plaster from wax or porcelain
- A thin layer is effective for days; no reapplication required
- Isolates the plaster, acrylic and metal surfaces to permit wax application

Packing	Item no.
30 mL (1.02 fl.oz.)/bottle	RF-1552-0030

Iso-Stift / Renfert

✓ *Practical Isolating Stick*



- Function & Performance:

- A practical, double-sided isolating stick for isolating plaster against porcelain and wax

- Advantages:

- Soft and hard tip for individual applications
- Economical and precise application of isolating material
- Comfortable and easy handling

Packing	Item no.
1's/pack	RF-1709-3000





Laboratory

Laboratory Materials

Vacuum Forming Materials



HENRY SCHEIN® Vacuum-Forming Materials

/ Henry Schein



■ Mouth Guard Material (5" x 5")

Color	Size	Packing	Item no.
Clear	0.040"	12 sheets /box	HS-101-8910
	0.060"		HS-101-7962
	0.080"		HS-100-7718
	0.120"		HS-101-2123
	0.150"		HS-100-1199
Red	0.150"	12 sheets /box	HS-100-7408
Blue	0.150"	12 sheets /box	HS-101-8361
White			HS-101-8270
Yellow			HS-101-4479

Primer

M.L. Primer / Shofu

✓ *Single Bottle Metal Link Primer Which Enhances Bonding Of Resin Materials To A Wide Variety Of Metals*

- Simple, easy to use with a short application time of 10 seconds
- Ideal for both intra oral and laboratory use



Packing	Item no.
5 mL/bottle	SF-1740

A.Z. Primer / Shofu

✓ *For Adhesive Bonding To Alumina And Zirconia Porcelains*

- Exclusively developed for alumina and zirconia
- Guarantees outstanding bonding strengths between the restoration, the luting composite and the tooth structure
- Ideal for both intra oral and laboratory use



Packing	Item no.
5 mL/bottle	SF-3232

CAD/CAM Accessory

Renfert-Scanspray / Renfert

✓ *Instantly-Adhering Color Layer*



- **Function & Performance:**
 - Maximum precision thanks to very thin layer application and homogenous grain size
- **Advantages:**
 - Accurate edge representation
 - Undistorted surfaces
 - Optimal polygon count in the 3D model

Packing	Item no.
200 mL (6.80 fl.oz.)/bottle	RF-1731-0000

