



# User Manual Lucid30

## HEARING AMPLIFIER

Affordable & Durable NEVER MISS A MOMENT

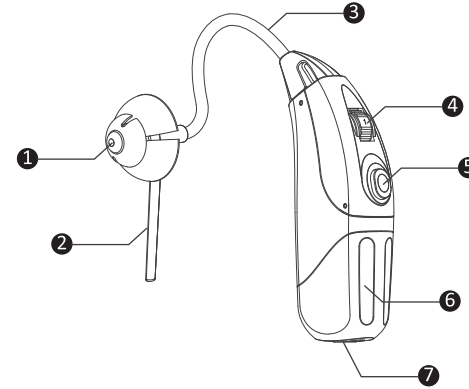
### Thank you

Congratulations! Welcome to a new low-carbon product, a rechargeable hearing instrument. Please read this user manual carefully before use. Please use the original charger and adaptor for better use.

### Battery tips

1. A full charge takes about 3+/-0.5 hours, and each battery module will allow up to 20 hours of use.
2. Recharging process will automatically shut off when battery is fully charged.

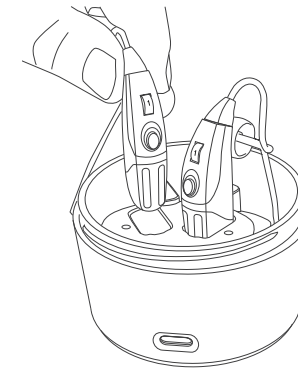
### Features



- ① Dome
- ② Retention lock
- ③ Sound tube
- ④ Volume control
- ⑤ Multi-function button:  
\* Memory switch  
\*\* ON/OFF switch  
\*\*\* LED Indicator
- ⑥ Removable battery module
- ⑦ Charging port

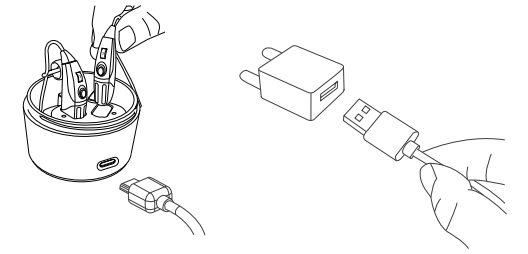
### How to charge

1. Charge the hearing instrument. Place the device into the outside charging port.
2. Charge the extra battery module. Place the battery into the inside port.



NOTICE: You can charge the hearing instruments whether they are covered or not.

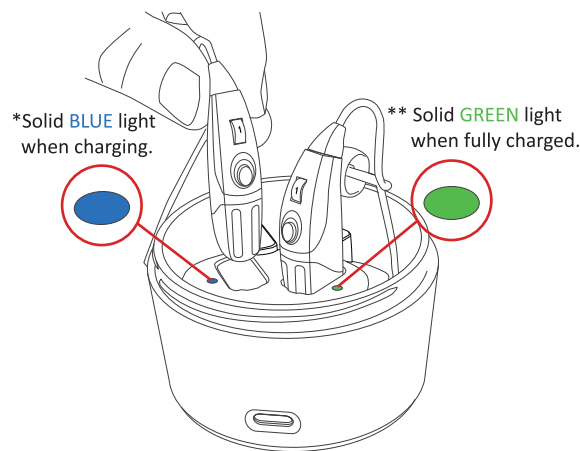
3. Connect one side of TYPE-C cable with charging base, and the other with the provided adaptor.



4. Plug the adaptor into power source.

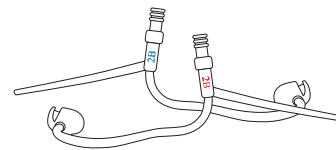
### Charging indicator

Each charging side has an independent charging indicator light.



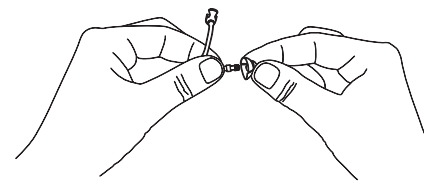
### Assembly - Slim tube

Your hearing instrument consists of three basic parts: The hearing instrument housing, sound tube and dome.

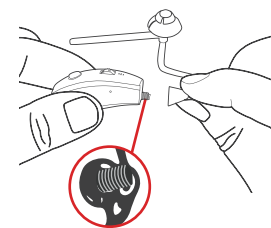


NOTE: LEFT and RIGHT hearing instrument is provided with the sound tube of the appropriate side.  
RED lettering on sound tube is for right ear.  
BLUE lettering on sound tube is for left ear.

1. Align dome opening and press over the grooves of sound tube, secure proper fitting.



2. Align and tightening the sound tube opening to the instrument's threaded connector clockwise, secure proper fitting.



### Wearing - Slim tube

1. Place the hearing instrument over the top of your ear.



2. Insert the dome with gentle pressure into your ear.



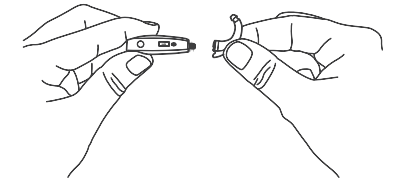
3. Tuck the retention lock into the edge of the bowl of the ear.



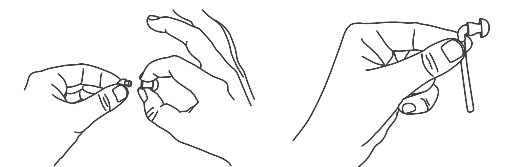
### Assembly - Thick tube

Your hearing instrument consists of four basic parts: The hearing instrument housing, earhook, thick sound tube and dome.

1. Screw on the earhook.



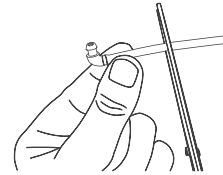
2. Choose a suitable dome, and attach to the sound tube.



- Position the hearing instrument over the ear.
- Insert the dome into the ear canal.



- Mark the location where the end of the ear hook is on the tubing.
- Remove the hearing aid and the tubing from your ear and cut the tubing 0.2 inches (3mm) above the mark on the tube.



- Attached the tube onto the earhook.

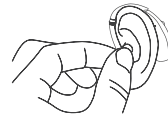
10

## Wearing - thick tube

- Place the hearing instrument over your ear.



- Insert the dome into your ear canal then softly press the dome into place.



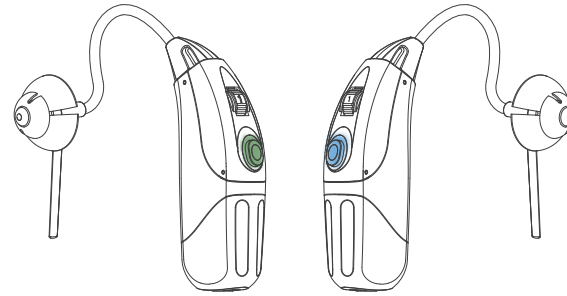
- Make slight adjustment to keep the hearing instrument in the most comfortable position.



11

## ON and OFF

Press and HOLD the memory switch for about 3 seconds. The device is equipped with power-on delay function, so it needs a few second to get started. When the instrument is turned on, it will flash green, and when it is turned off it will flash blue.



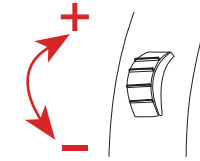
Turned on

Turned off

12

## Volume control

Adjusting level of sound by rotating the volume control dial up or down. To increase the volume, turn the volume control up (+). To decrease the volume, turn the volume control down (-).

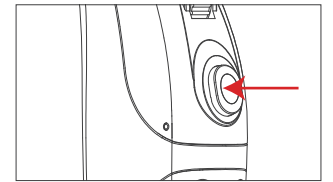


NOTE: Before wearing the instrument, make sure that the volume is not at the maximum.

13

## Memory switch

When the hearing instrument is turned ON, it will revert to last program setting. Other preset programs are for your specific needs that can be accessed by using the memory switch. Pressing of the memory switch will change the program according to the preset sequence: 1, 2, 3 and 4. Your hearing instrument 'beeping' signal will help identify preset programs. Example: program 1 will emit 1 beep, program 2 will emit 2 beeps, etc. Selected model may only support two program setting.



14

## Replacing the battery module

The battery is made into a separate module that can be replaced by plugging and unplugging. The battery module can be charged separately while the whole instrument is charging. This innovative and patent design will free customers from frequent plugging and replacing. Please follow the below tips to replace battery module.



- Put the lettering side of the hearing device up, then gently press down with your fingers.
- Take out the module gently.



- Plug into a new one.

NOTICE: Do not pull the module too far, or damage is likely to occur.

16

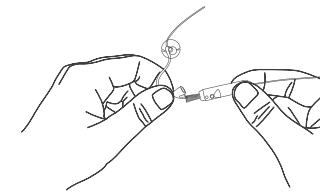
## Troubleshooting

SYMPTOM	POSSIBLE CAUSE	SOLUTIONS
No/low sound, no function	Low battery	Recharge the instrument
	Built-up wax in the dome	Clean the dome; replace the old dome
	Excessive ear wax	Consult your physician
	Volume set too low	Turn up the volume
	Improper dome insertion	Re-insert the dome
Whistling, feedback	Hearing instrument damaged	Contact your hearing care professional
	Hearing change	Contact your hearing care professional
Whistling, feedback	Dome wrong size, damaged	Replace with new or better fitted dome
	Improper dome insertion	Re-insert the dome

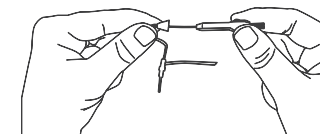
17

## Cleaning

Use a soft cloth to remove any dirt and moisture after each used. The provided cleaning tool and brush is for removing debris / wax built-up inside the sound tube and dome.



To clean - insert the cleaning tool through the threaded end of the tube, push the cleaning tool all the way through the tubing until the tip of the cleaning tool comes through the end of the dome.



18

## Helpful tips for whistling

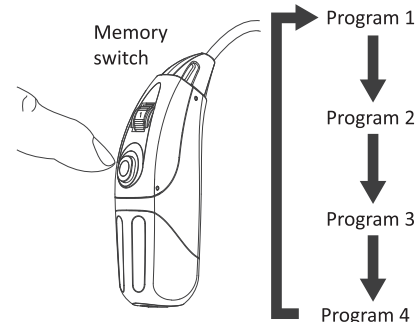
Whistling is common in small amplifier and is known as 'feedback'. It is caused by amplified sound leaving the ear and receiving back into the microphone and being re-amplified. The following tips will help reduce the effect of feedback/whistle noise:

- Lower the volume. Keep volume at lower setting before inserting the instrument in your ear.
- Secure instrument fitted position. Feedback/whistling noise will stop when the instrument is best fitted/sealed in the ear with the best fitted dome size.
- Clear the ear canal of wax or debris. Seek your hearing care provider for excessive wax built-up.
- Replace the dome or tubing. Change new dome with a better fitted size. Make sure the tubing is not broken or torn.

Email: [support@vivtonehealth.com](mailto:support@vivtonehealth.com) to contact your hearing care professional, or to solve any problem of your purchasing.

19

Program	Suitable for	Indicator
Program 1	Normal	1 beep sound
Program 2	Noise reduction	2 beep sound
Program 3	TV	3 beep sound
Program 4	Outdoor	4 beep sound



15