



ELDORADO

CLIMBING



The Spot Denver Bouldering Gym - Denver, CO

CONTENTS

Our Company 5

Custom Walls 6

Panelized 7 • Wood Finishes 8 • REALRock 9

Modular Systems 12

Boulders 14

Custom Boulders 15 • Pre-engineered Boulders 16

Landmark Series 18 • Eldo Board 19

DIY Panels 20

Kinetix Action Towers 26

Towers 28 • Challenges 30 • Climbponents 31 • Flooring 32

Services 33

Flooring 34

TRUBLUE Autobelays 35

Equipment 36



Variety Boys & Girls Club Wall built in partnership with 1Climb - Los Angeles, CA (And yes, Aquaman does climb.)

OUR COMPANY

Eldorado has been designing, manufacturing, and installing the finest climbing walls and climbing products since 1994. Over 2,500 architects, general contractors, facility owners and managers, and homeowners have trusted Eldorado to add climbing terrain to their spaces.

We are proud to call some of the finest organizations in the world our partners.



And we actively support nonprofits whose missions resonate with the Eldorado Team. We provide funding, product, and a lot of sweat.



WALLS CUSTOM



PANELIZED

Panelized Wall™ provides climbing wall operators with a quick-installation, contemporary design, and a textured surface that grips but doesn't scrape knees. Color options and design possibilities are endless. Incorporate features such as dihedrals, aretes, cracks, arches, roofs, and expanses to create the ultimate routesetter's canvas.



Macon Rocks Climbing Gym - Macon, GA



The Spot Golden Bouldering Gym - Golden, CO



Boys & Girls Club - Denver, CO



Sky Zone - Asheville, NC

PANELIZED WITH NATURAL WOOD FINISHES

Eldorado Climbing offers a world of options for walls showcasing wood finishes. With Walltech Climbing as a collaborator, Eldorado has access to unique woods and construction processes. Learn more about the Eldorado Climbing-Walltech collaboration at eldowalls.com/pages/colab.



LOXO Oncology - Louisville, CO



Climbing District Batignolles - Paris, France (Project by our collaborator Walltech Climbing)



Brandeis University - Waltham, MA



Climbing District Canal Saint-Martin - Paris, France
(Project by our collaborator Walltech Climbing)

REALROCK

Designed for beauty and realism, RealRock™ is the most stunning climbing wall product available. RealRock Wall™ may take on any feature found in nature, including pinnacles, roofs, arêtes, arches, chimneys, dihedrals, cracks, and freestanding boulders. The surface can also be colored and hand-sculpted to mimic the look of any rock – granite, sandstone, basalt, limestone, and more. This product will last for decades in the harshest conditions.



Aspen Snowmass Lost Forest's Rugged Ascent Climbing Wall - Snowmass, CO



Vail Ski Resort - Vail, CO



Boy Scouts of America Bechtel Summit Reserve - Glen Jean, WV



Stowe Rocks Climbing Center - Stowe, VT



Adventure Rock MKE Climbing Gym - Milwaukee, WI



Blamire Home - Colorado Springs, CO



Penn State - State College, PA



ROX Climbing Gym - Lake Nona, FL



Weber State University - Ogden, UT.



ProjectRock Climbing Gym - Ft. Lauderdale, FL



DynoClimb Climbing Gym - Deland, FL

WALLS MODULAR



MODULAR

Enjoy walls that are versatile enough to provide easy terrain for a first-time climber as well as routesetting options to keep a seasoned climber challenged. Eldorado Modular Climbing Wall Systems are quick to install, excellent indoors or outside, low profile, expandable, movable, and cost effective.



Gecko Modular Climbing Wall

- Composed of 4 ft (1.21m) W x 7 ft (2.13m) H glass fiber reinforced polymer (GFRP)
- Modular panels allow for a vast array of configurations
- Attaches to an existing wall and supported by a steel substructure
- Use indoors or outdoors
- Can be installed by a 2-3 person team with basic construction skills
- Durable, lightweight and easy to ship anywhere in the world
- Auto belays are available but not included
- Custom flooring available



Chameleon Modular Climbing Tower

- Composed of 4ft (1.21m) W x 7 ft (2.13m) H glass fiber reinforced polymer (GFRP)
- Modular panels allow for a vast array of configurations
- Attaches to a concrete slab and supported by a steel substructure
- Use indoors or outdoors
- Can be installed by a 2-3 person team with basic construction skills
- Durable, lightweight, and easy to ship anywhere in the world
- Auto belays are available but not included
- Custom flooring available



Adventure Traverse Wall

- 9 ft (2.74m) H x 8 ft (2.43m) W segments, double-sided bouldering & traverse wall panels made of either engineered plywood or plastic (HDPE) panels
- T-nuts pre-installed
- Add and move handholds to keep routes fresh
- Set any number of modular panels to create a linear or articulated run
- Built to withstand any outdoor environment

BOULDERS



CUSTOM

Climbable art crafted to match your vision

Whether you need a climbable boulder that resembles rocks at the base of The Chief in Squamish, El Capitan in Yosemite, a sandstone cliff in the Utah desert, or the volcanic rock of Devil's Tower, our artists can bring your vision to life. These boulders look and climb like real rock.



Übergrippen Indoor Climbing Crag - Denver, CO

Squamish, BC



Summit Bechtel Family National Scout Reserve - Glen Jean, WV

Private Home - Bakersfield, CA

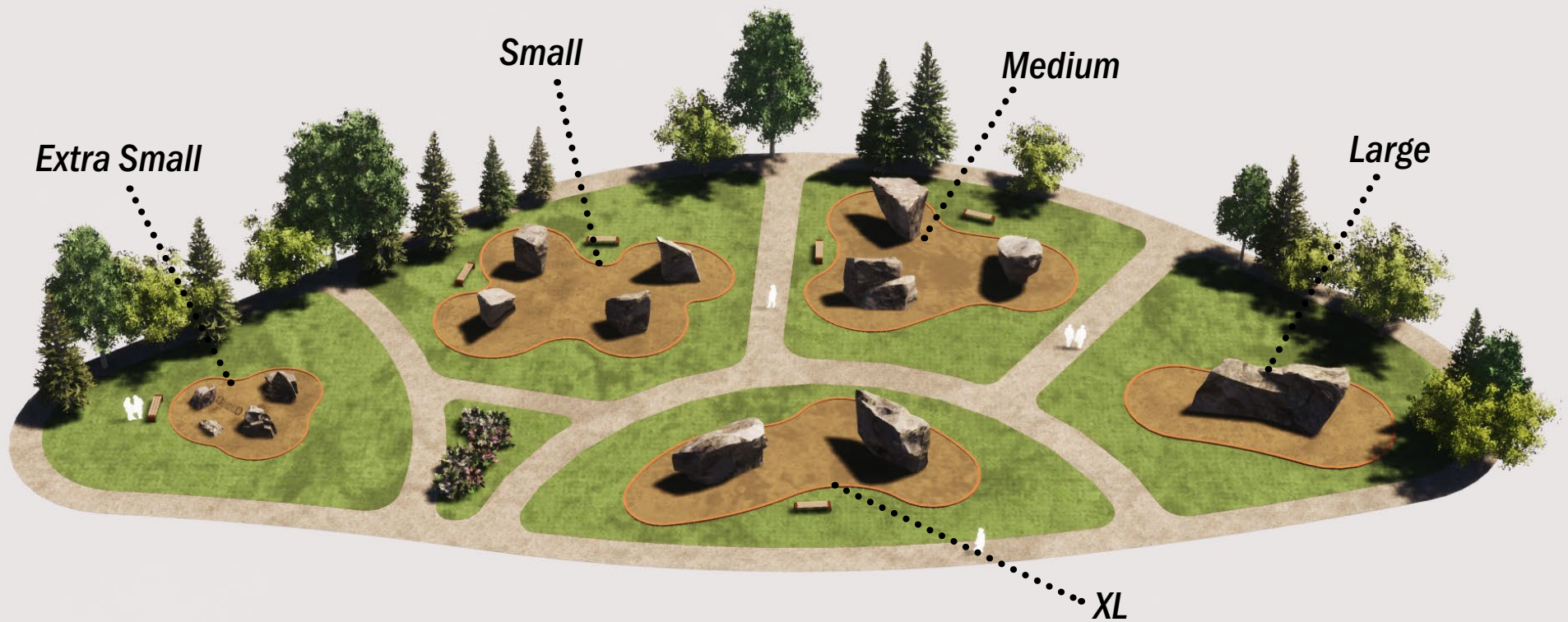


Bender Fields - Lynden, WA

University of Nebraska - Lincoln, NE



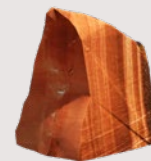
PRE-ENGINEERED



Save time and money by choosing a boulder or three from this collection. The design and engineering is already complete so you can avoid the cost and time spent on those processes. The boulder(s) may be completely manufactured at the Eldo facility and shipped to you for placement or they may be built on-site.

Foundation must be installed by client prior to delivery or construction.

FINISHES



Sandstone



Granite

PRE-ENGINEERED

XS



XS1 5.5 ft (1.67 m) L x 3 ft (0.91 m) W x 2.5 ft (.76 m) H
40 ft² (3.71 m²) • 2450 lbs (1112 kg) • Forklift



XS2 5.5 ft (1.67 m) L x 3.5 ft (1.17 m) W x 3.5 ft (1.17 m) H
50 ft² (4.65 m²) • 3500 lbs (1588 kg) • Forklift



XS3 7 ft (2.13 m) L x 4 ft (1.21 m) W x 4.5 ft (1.37 m) H
90 ft² (8.36 m²) • 5950 lbs (2699 kg) • Forklift



XS4 9 ft (2.74 m) L x 6.5 ft (1.98 m) W x 6.5 ft (1.98 m) H
110 ft² (10.22 m²) • 7700 lbs (3493 kg) • Forklift

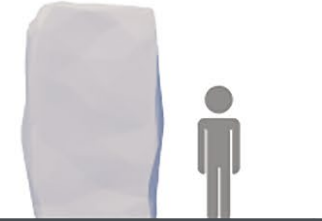
S



S1 8 ft (2.43 m) L x 8 ft (2.43 m) W x 9 ft (2.74 m) H
200 ft² (18.58 m²) • 14,000 lbs (6,350 kg) • Crane



S2 10 ft (3.05 m) L x 7 ft (2.13 m) W x 9 ft (2.74 m) H
200 ft² (18.58 m²) • 14,000 lbs (6,350 kg) Crane



S3 10 ft (3.05 m) L x 7 ft (2.13 m) W x 9 ft (2.74 m) H
200 ft² (18.58 m²) • 14,000 lbs (6,350 kg) Crane



S4 10 ft (3.05 m) L x 7 ft (2.13 m) W x 9 ft (2.74 m) H
200 ft² (18.58 m²) • 14,000 lbs (6,350 kg) • Crane

M



M1 15 ft (4.57 m) L x 8 ft (2.44 m) W x 10 ft (3.05 m) H
350 ft² (32.51 m²) • 24,500 lbs (11,113 kg) • Crane



M2 15 ft (4.57 m) L x 8 ft (2.44 m) W x 10 ft (3.05 m) H
350 ft² (32.51 m²) • 24,500 lbs (11,113 kg) • Crane



M3 15 ft (4.57 m) L x 8 ft (2.44 m) W x 10 ft (3.05 m) H
350 ft² (32.51 m²) • 24,500 lbs (11,113 kg) • Crane

L



L1 18 ft (5.49 m) L x 8 ft (2.44 m) W x 10.5 ft (3.2 m) H
500 ft² (46.45 m²) • 35,000 lbs (15,875 kg) • Crane



L2 18 ft (5.49 m) L x 8 ft (2.44 m) W x 10.5 ft (3.2 m) H
500 ft² (46.45 m²) • 35,000 lbs (15,875 kg) • Crane

XL



XL1 27 ft (8.23 m) L x 8 ft (2.44 m) W x 10.5 ft (3.2 m) H
750 ft² (69.68 m²) • 45,000 lbs (20,411 kg) • Crane

LANDMARK SERIES

Hand-sculpted. Hand-painted. Instantly recognizable.

Imagine the surprise, excitement, and Instagram posts that will happen when your guests and community members see a climbable Delicate Arch or Devils Tower far from Utah or Wyoming. These climbing boulders are functional works of art made from hand-sculpted, hand-painted shotcrete.

- No special equipment needed like ropes or climbing shoes
- Can be installed outdoors or indoors

NOTE: These climbing boulders are artistic interpretations of iconic locations. Expect a recognizable structure, but don't expect to find a recreation of El Matador.



Devils Tower
12 ft (3.65m) H x 13.5 ft (4.11m) L x 12 ft (3.65m) W

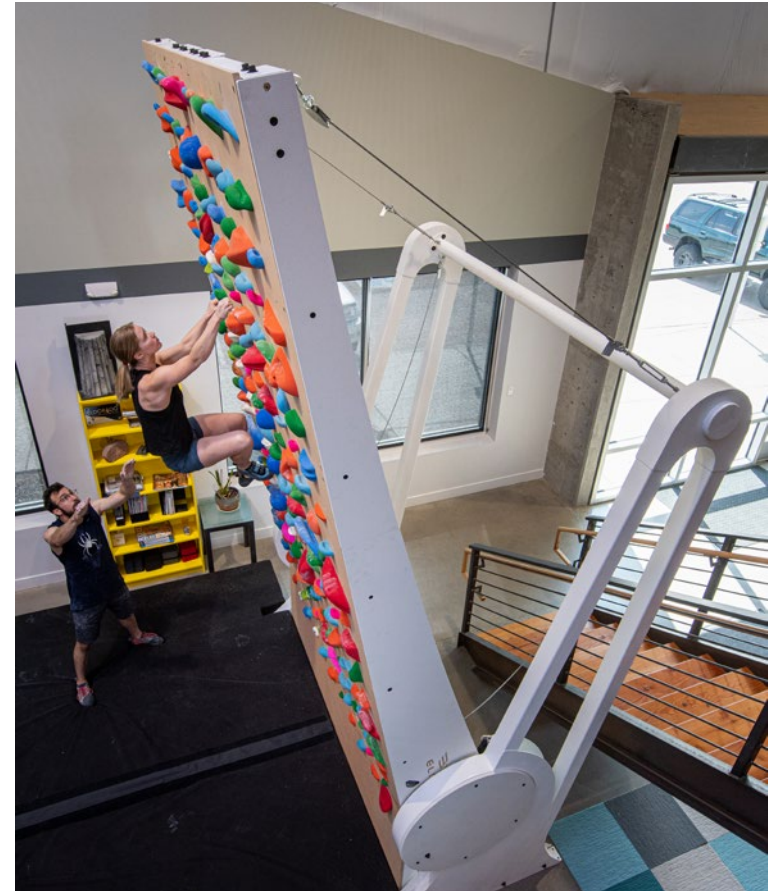


Delicate Arch
12.5 ft (3.65m) H x 17 ft (5.18m) L x 7.5 ft (2.28m) W

ELDO BOARD

Pick your favorite interactive training system and add it to the safest and most stylish blank canvas out there.

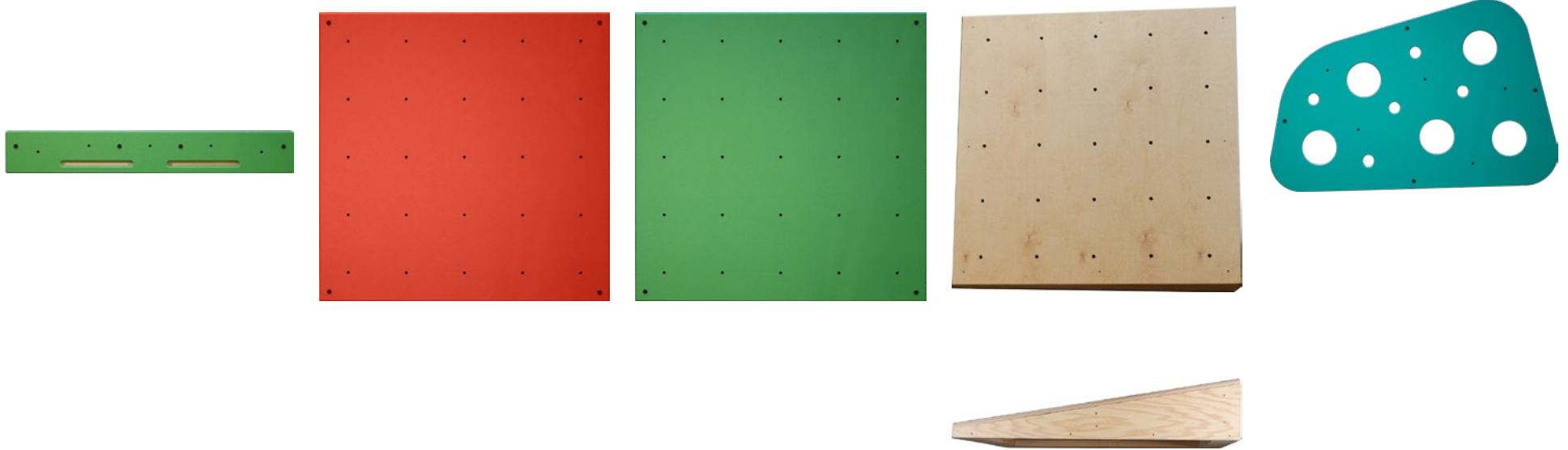
- Works with Moon, Tension, Kilter, and others
- Ready for DIY indoor installation
- Manual hand-crank adjustment
- 15.5 ft (4.72 m) MAX H x 13 ft (3.96 m) W x 22 ft (6.70 m) D w/ flooring
- Wall Angles – 20-80 degrees from horizontal or 10-70 degrees from vertical
- Bolt-together, powder-coated steel support structure
- Panels in Natural Finish



DIY PANELS



WOOD INDOOR



Solo

with FreeMount Flange

- 42 in (106.68 cm) W x 6 in (15.24 cm) H x 2 in (5.08 cm) D
- Engineered plywood panels
- Durable textured coating
- 5 t-nuts pre-installed
- NO ledgers required
- Colors - All Panel Color Options

Original Slab

- 42 in (106.68 cm) W x 42 in (106.68 cm) H x 1 in (2.54 cm) D
- Engineered plywood panel
- Durable textured coating
- 25 t-nuts pre-installed
- NOT INCLUDED - FreeMount Flange
- Ledgers required
- Colors - All Panel Color Options

FreeMount Slab

with FreeMount Flange

- 42 in (106.68 cm) W x 42 in (106.68 cm) H x 2 in (5.08 cm) D
- Engineered plywood panel
- Durable textured coating
- 25 t-nuts pre-installed
- NO ledgers required
- Colors - All Panel Color Options

3D Slab

with FreeMount Flange

- 42 in (106.68 cm) W x 42 in (106.68 cm) H x 2 in - 8 in (5.08 cm - 20.32 cm) D
- Engineered plywood panel
- Durable textured coating
- 25 t-nuts pre-installed
- NO ledgers required
- Colors - All Panel Color Options

Explorer

with FreeMount Flange

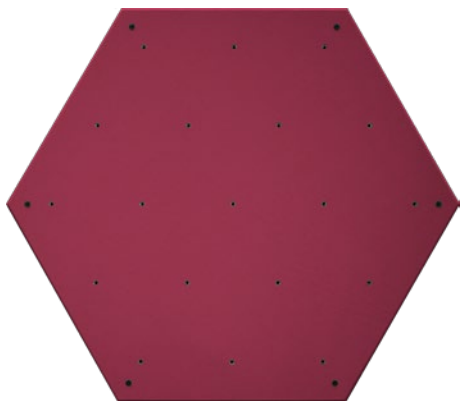
- 33 in (83.82 cm) x 50 in (127 cm) x 2 in (5.08 cm) D
- Engineered plywood panels
- Durable textured coating
- 19 t-nuts pre-installed
- NO ledgers required
- Colors - All Panel Color Options

Panel Color Options



NOTE: Colors can appear different on different screens. The paint color may not exactly match what you see on your screen.

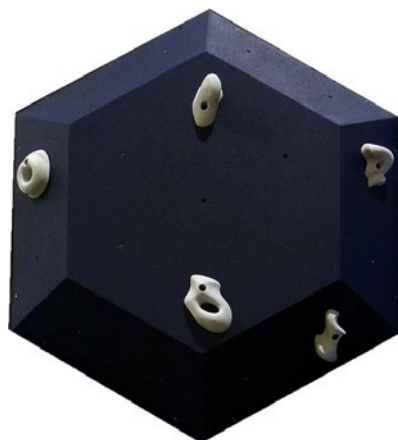
WOOD INDOOR



Prisma

with FreeMount Flange

- 44 in (111.76 cm) x 50 in (127 cm) x 2 in (5.08 cm) D
- Engineered plywood panels
- Durable textured coating
- 19 t-nuts pre-installed
- INCLUDED - FREEMount Flange
- NO ledgers required
- Colors - All Panel Color Options



3D Prisma

with FreeMount Flange

- 44 in (111.76 cm) x 50 in (127 cm) x 8 in (20.3 cm) D
- Engineered plywood panels
- Durable textured coating
- 19 t-nuts pre-installed
- INCLUDED - FREEMount Flange
- NO ledgers required
- Colors - NOT available in Natural Finish



Summit Set

with FreeMount Flanges

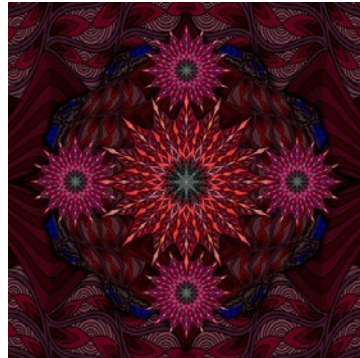
- 14 ft (3.55 m) W x 7 ft (2.13 m) H x 2 in (5.08 cm) D
- Engineered plywood panels
- Durable textured coating
- 48.8 ft² (4.53 m²) of climbing
- 90 T-nuts per set
- INCLUDED - FREEMount Flange
- NO ledgers required
- Colors - NOT available in Natural Finish

Panel Color Options



NOTE: Colors can appear different on different screens. The paint color may not exactly match what you see on your screen.

ARTIST SERIES INDOOR



Artist Phil Lewis
Frequency

- Made of one or more 42 in (106.68 cm) W x 42 in (106.68 cm) H x 2 in (5.08 cm) D panels
- Engineered plywood panels
- Durable textured coating
- 25 t-nuts pre-installed
- INCLUDED - FREEMount Flange
- NO ledgers required
- Colors - Artwork was created by Phil Lewis for this collaborative project. Colors cannot be changed.
- 3 CONFIGURATIONS AVAILABLE

Artist Phil Lewis
Remix

- Made of one or more 42 in (106.68 cm) W x 42 in (106.68 cm) H x 2 in (5.08 cm) D panels
- Engineered plywood panels
- Durable textured coating
- 25 t-nuts pre-installed
- INCLUDED - FREEMount Flange
- NO ledgers required
- Colors - Artwork was created by Phil Lewis for this collaborative project. Colors cannot be changed.
- 3 CONFIGURATIONS AVAILABLE

Artist Phil Lewis
Red Rocks

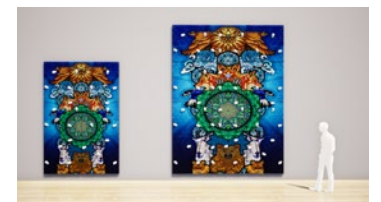
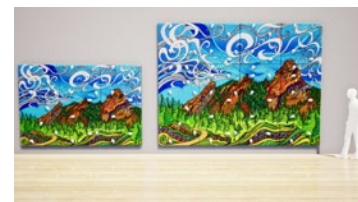
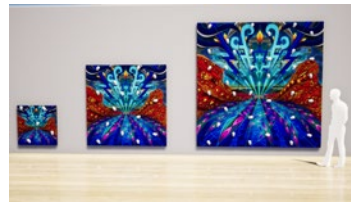
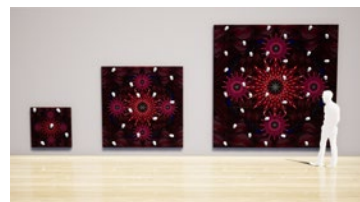
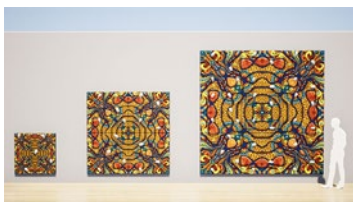
- Made of one or more 42 in (106.68 cm) W x 42 in (106.68 cm) H x 2 in (5.08 cm) Dpanels
- Engineered plywood panels
- Durable textured coating
- 25 t-nuts pre-installed
- INCLUDED - FREEMount Flange
- NO ledgers required
- Colors - Artwork was created by Phil Lewis for this collaborative project. Colors cannot be changed.
- 3 CONFIGURATIONS AVAILABLE

Artist Phil Lewis
Flatirons

- Made of multiple 42 in (106.68 cm) W x 42 in (106.68 cm) H x 2 in (5.08 cm) D panels
- Engineered plywood panels
- Durable textured coating
- 25 t-nuts pre-installed
- INCLUDED - FREEMount Flange
- NO ledgers required
- Colors - Artwork was created by Phil Lewis for this collaborative project. Colors cannot be changed.
- 2 CONFIGURATIONS AVAILABLE

Artist Phil Lewis
Arise

- Made of multiple 42 in (106.68 cm) W x 42 in (106.68 cm) H x 2 in (5.08 cm) D panels
- Engineered plywood panels
- Durable textured coating
- 25 t-nuts pre-installed
- INCLUDED - FREEMount Flange
- NO ledgers required
- Colors - Artwork was created by Phil Lewis for this collaborative project. Colors cannot be changed.
- 2 CONFIGURATIONS AVAILABLE

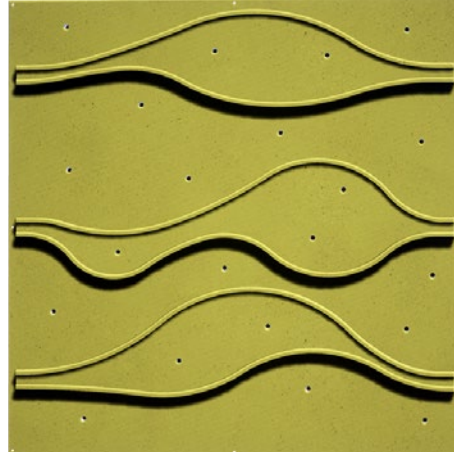


FIBERGLASS INSIDE/OUTSIDE



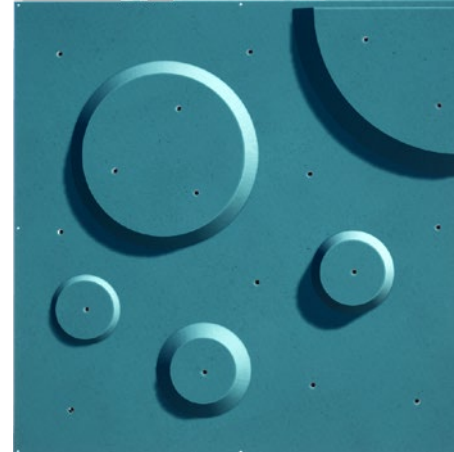
Crystal

- 48 in (121.92 cm) W x 48 in (121.92 cm) H x 4.5 in (11.43 cm) D
- Fiberglass
- 26 t-nuts pre-installed
- Ledgers required
- Colors - All color options



Wave

- 48 in (121.92 cm) W x 48 in (121.92 cm) H x 3 in (7.62 cm) D
- Fiberglass
- 26 t-nuts pre-installed
- Ledgers required
- Colors - All color options



Bubble

- 48 in (121.92 cm) W x 48 in (121.92 cm) H x 3 in (7.62 cm) D
- Fiberglass
- 26 t-nuts pre-installed
- Ledgers required
- Colors - All color options



Blocks

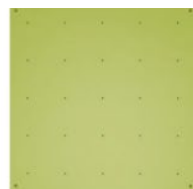
- 48 in (121.92 cm) W x 48 in (121.92 cm) H x 3 in (7.62 cm) D
- Fiberglass
- 26 t-nuts pre-installed
- Ledgers required
- Colors - All color options



Powder White



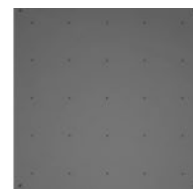
Ocean Blue



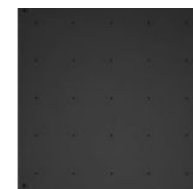
Cadmium Green



Monarch Orange



Horizon Gray



Pebble Black

WOOD INSIDE/OUTSIDE



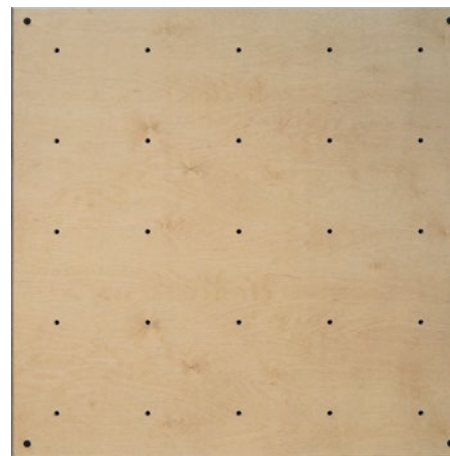
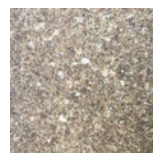
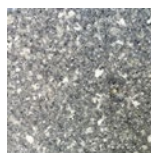
Fiberglass Slab

- 48 in (121.92 cm) W x 48 in (121.92 cm) H x 2 in (5.08 cm) D
- Fiberglass
- 25 t-nuts pre-installed
- Ledgers required
- Colors - All Panel Color Options



SOLIDRock

- 48 in (121.92 cm) W x 48 in (121.92 cm) H x 2 in (5.08 cm) D
- Fiberglass
- 26 t-nuts pre-installed
- Ledgers required
- Colors



Climbing Slab Outdoor Edition

- 42 in (106.68 cm) W x 42 in (106.68 cm) H x 1 in (2.54 cm) D
- Weatherproof engineered wood substrate
- 25 t-nuts pre-installed
- Ledgers required
- Colors - All Panel Color Options

KINETIX ACTION TOWERS

Evolution of Action Architecture

All Ages and Abilities

Enjoy expanded customer demographics with Challenges appealing to kids, adults, beginners, and experts alike.

Modular

Easily swap out Challenges and Climbponents to keep your Action Tower fresh and exciting.

Fits Any Facility

Three Tower types and heights to fit any space.

Outdoor or Indoor

Activate your outdoor or indoor spaces.

Freestanding

Freestanding design eliminates the cost and hassle of site-specific engineering.

Kinetic

Dynamic elements enable a truly 3D, kinetic climbing experience.



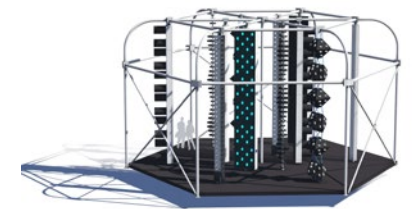
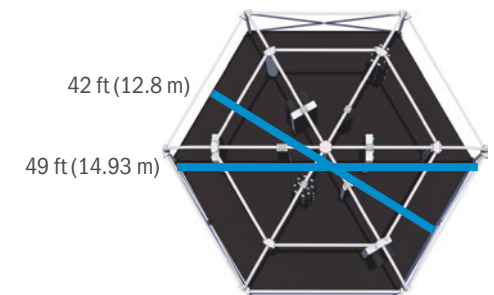
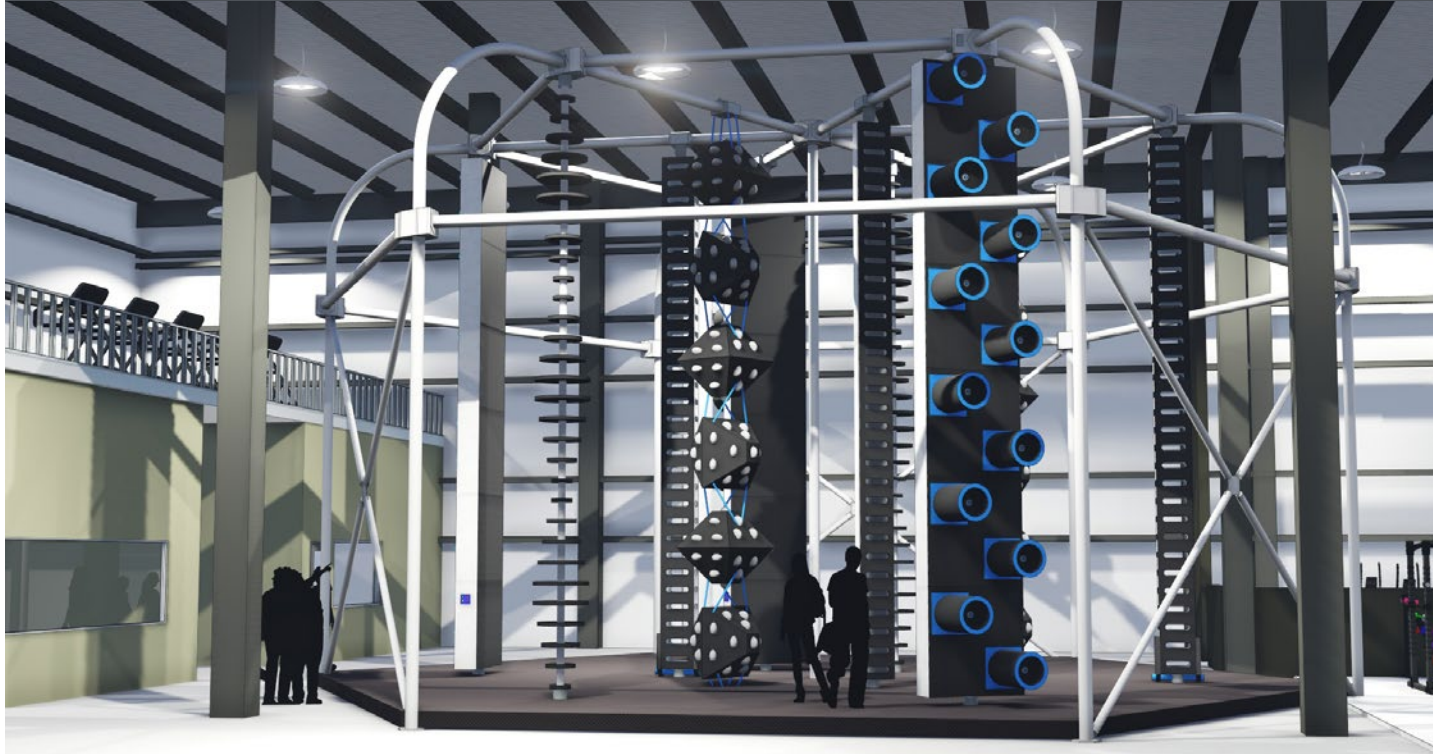


TOWERS

Unlike other action architecture systems on the market, Kinetix Action Towers offer a variety of ways to install and support Challenges within your building or outdoor space. Choose the version that best matches your local requirements, building structure, and desired flow of guests.

- Available in 14 ft (4.27 m), 18 ft (5.49 m), 22 ft (6.71 m), and 26 ft (7.92 m) heights.
- All are designed and engineered to be installed onto 4-inch concrete slabs.
- Towers can be custom colored.

CANOPY

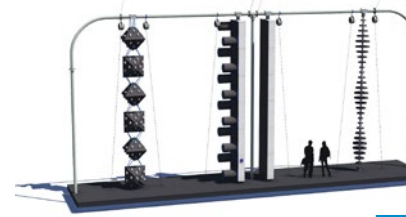


Challenges - 12
 Climbers - 18
 Freestanding

ARCH



*Arch Standard Shown



Requires wall or ceiling attachment

- Junior - 35 ft (10.36 m)
- Standard - 55 ft (16.76 m)
- Jumbo - 75 ft (22.86 m)

12 ft (3.66 m)



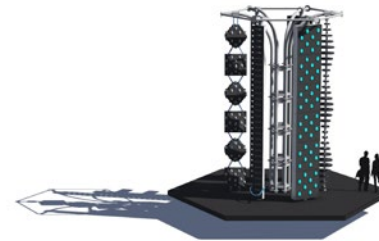
Challenges per Configuration

- Junior - 2
- Standard - 4
- Jumbo - 6

Climbers per Configuration

- Junior - 4
- Standard - 6
- Jumbo - 8

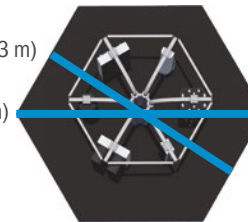
TREE



Challenges - 6
Climbers - 9
Freestanding

28 ft (8.53 m)

32 ft (9.75 m)

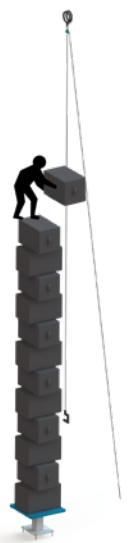


CHALLENGES

Keep your Action Towers fresh and exciting with an ever-growing catalog of modular Challenges. Ask about color customization.



Adjustable Chimney



Block Build



Buoy Ladder



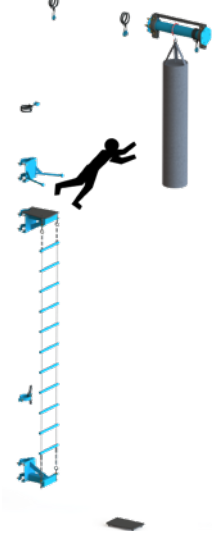
Bring Your Own Planks



Disc Grips



Double Poles



King Swing



Leaning Ladder



Lines of Ascent



Suction Cups



Log Lasso



Sky Steps



Double Ropes



Etrier Ascent



Face Off



Floating Panels



Floating Steps



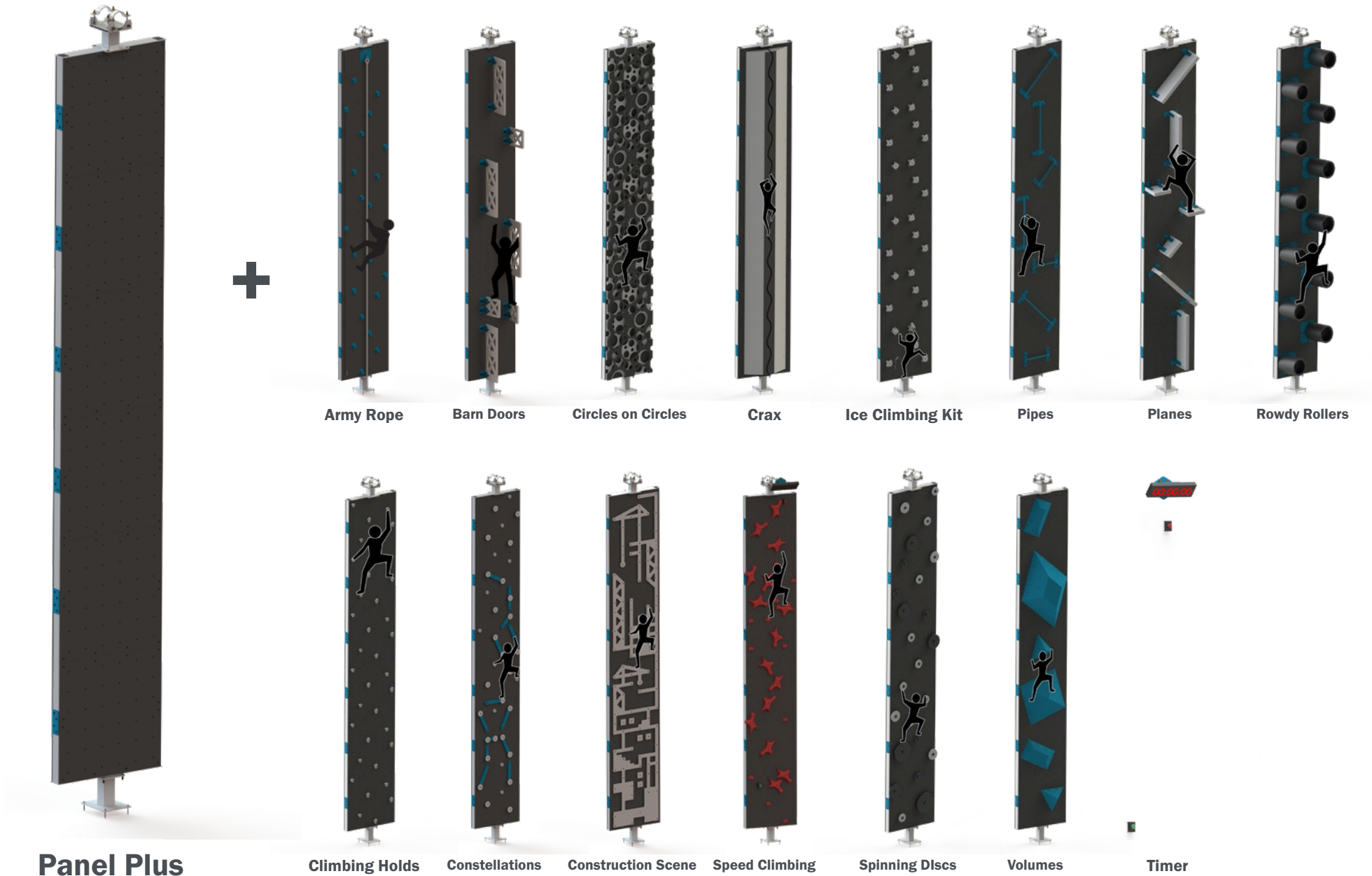
Floating Volumes



Yo Yo Barrel

CLIMBPONENTS

Climbponents bolt on to the Panel Plus and select others Challenges. Mix and match to keep your Action Towers fresh and exciting for your guests.



Panel Plus

Climbing Holds

Constellations

Construction Scene

Speed Climbing

Spinning Discs

Volumes

Timer

Army Rope

Barn Doors

Circles on Circles

Crax

Ice Climbing Kit

Pipes

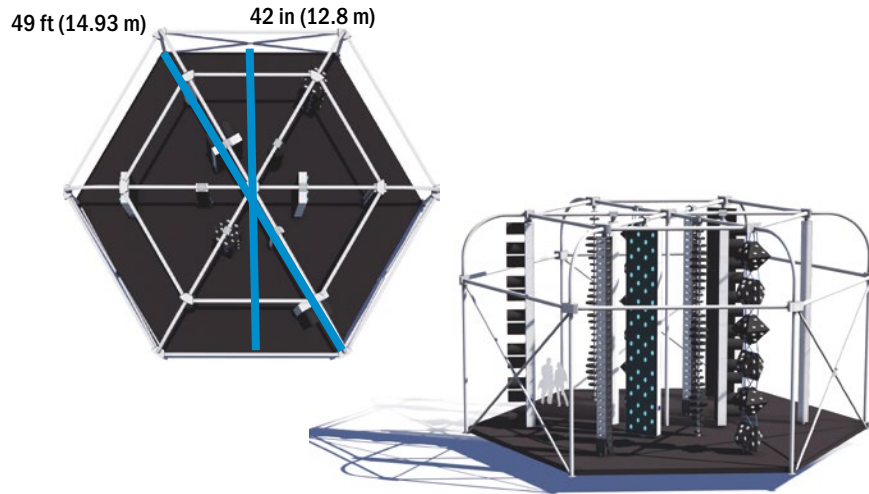
Planes

Rowdy Rollers

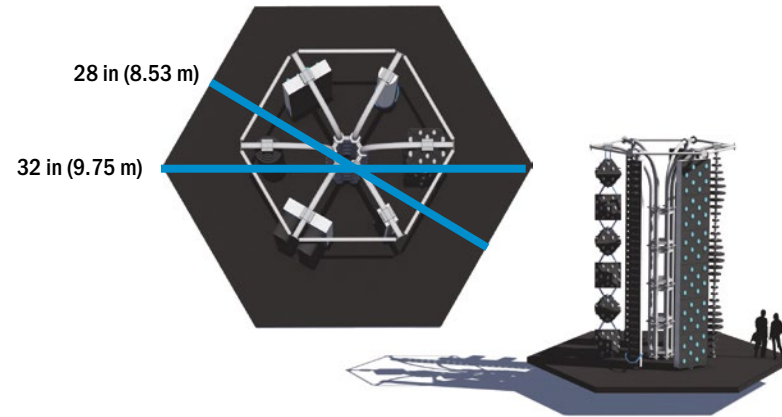
KINETIX FLOORING

Adding fall attenuation flooring is highly recommended and may be required in your area. Each attachment system has a matching padding configuration that is available in two depths.

Canopy

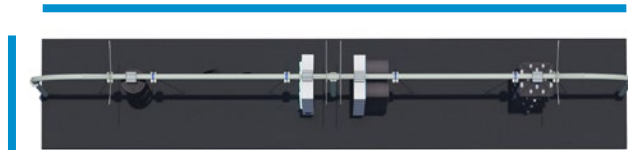


Tree

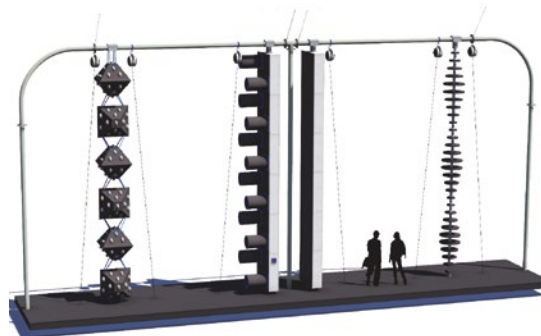


Arches

Junior - 35 ft (10.36 m)
 Standard - 55 ft (16.76 m)
 Double - 75 ft (22.86 m)



All Configurations
 12 ft (3.66 m)



1.375 in (3.49 cm)

Standard

8 in (20.32 cm)

Premium

12 in (30.48 cm)

Bouldering

SERVICES



Refresh

Eldorado is the industry leader in climbing wall refurbishment, expansion, and partial or complete demolition. Before you consider starting from scratch, think about what you can do with what you have while keeping your business open and running.

- Update the paint scheme.
- Adjust terrain to make it easier or more challenging to climb.
- Create a programming/party wall.
- Patch grooves from carabiners.
- Replace worn draws, harnesses, and shoes.
- Add new features like a rappel ledge, a roof, or a crack.
- Upgrade your flooring.
- Add TRUBLUE Auto Belays.

Inspections

Climbing wall inspections by an outside party are key to maintaining the safest possible climbing environment and protecting a major physical asset.

- Identify issues with the surface and framework of the wall as well as flooring and equipment.
- Provide insight into risk management, operations, and programming.
- Offer an opportunity to discuss possible wall, facility, operation, and programming improvements.
- Keep your facility in compliance with some insurance requirements and regional regulations.

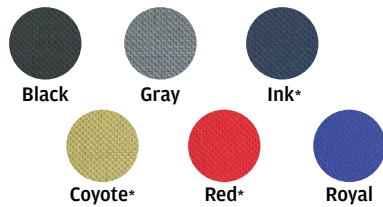
Outdoor Walls - Inspect every 2 years min.
Indoor Walls - Inspect every 4 years min.

FLOORING



Modular Nylon Bouldering Flooring

- 12 in (30.48 cm) standard high-density impact foam
- Custom thicknesses available up to 18 in (45.72 cm)
- Tear-resistant, easy-clean nylon weave with Velcro seams
- Modular pads are individually removeable or replaceable
- Available with professional installation or as self-install



ProTec

- 5.5 in (13.97 cm) dual density impact distribution
- Carpet-bonded top layer over foam
- Easily maintained by vacuuming
- Captures chalk dust to help keep the space clean
- Wear-resistant Velcro seam strips and Cordura edging



TRUBLUES



TRUBLUE iQ Auto Belay

The TRUBLUE™ iQ Auto Belay is the next generation of indoor and outdoor climbing wall auto belays. Designed for the climbing industry, thousands of TRUBLUES are in use around the world in climbing gyms, ropes courses, family entertainment centers, and more.

TRUBLUE's self-regulating magnetic braking system is the result of years of research, development, and testing. Our auto belay is designed for climbers and engineered for safety. TRUBLUE Auto Belays are engineered to meet the strictest safety standards, including extensive testing by one of the leading certification bodies in the world, TÜV/SÜD Product Service GmbH.

The TRUBLUE is available in two webbing lengths:

- 41 ft (12.5 m)
- 65 ft (20 m)



Belay Gate

The Belay Gate is a simple way to reinforce the proper use of auto belay devices and minimize risk from climbing error.

While not in use, the auto belay clips into triangular Belay Gate, blocking the initial foot holds and hand holds of a climbing lane. Once the climber transfers the auto belay carabiner from the gate to their harness, the Belay Gate lays flat on the floor, opening the climbing lane and alerting others there is a climber above. Foam adds padding and gives the gate structure up on the wall or while lying flat on the ground.

Available in Orange/Green

- 420 Denier Nylon
- 1/4" Foam
- 48 inches wide x 41 inches tall (1219 mm wide x 1041 mm tall)
- Lower webbing straps adjust from 1-17 inches (25-432 mm)
- Made in the USA



Mounting Kit

Use this turnkey kit for hassle-free mounting of your TRUBLUE Auto Belay, as specified in the Operator Manual.

Kit contains:

- 2 Steel Locking Carabiners
- 1 segment of 3/8 inch chain that is 2 foot (60cm) in length
- 1 16mm CAMP Express Nylon Runner that is 2 foot (60cm) in length

The Mounting Kit system has a minimum breaking strength of 4945 lbf (22 kN) when properly installed.

EQUIPMENT



4' (1.21m)

Flip-up Pads

- 4 ft (1.21 m) W x 6 ft (1.82 m) L x 3.5 ft (8.89 m) D
- Weighs 20 lbs (9.07 kg)
- Durable vinyl cover over foam
- Velcro flaps on edges to connect mats
- Bungies for attaching mats up against the wall when not in use
- Attached webbing with grommets to allow mats to be bolted to the bottom of the wall
- NO CLIMBING graphic shows when the pad is flipped up and indicates the wall is closed
- COLOR Black only



Drag Mat

- Grey ballistic nylon top with black ballistic nylon bottom and sides
- Embroidered handles
- Shipped vacuum-packed so it costs less to ship and is easier to handle
- Client inserts the compressed foam into the cover with a zip-closure

SMALL 4 ft (1.21 m) x 6 ft (1.82 m) x 8 in (20.32 cm), 29 lbs (13.15 kg)

MEDIUM 6 ft (1.82 m) x 6 ft (1.82 m) x 8 in (20.32 cm), 44 lbs (19.96 kg)

LARGE 8 ft (2.43 m) x 8 ft (2.43 m) x 10 in (25.4 cm), 97 lbs (44 kg)



Climbing Holds

- Polyurethane holds provide superior texture
- Wide range of shapes, sizes, and features for all skill levels
- Standard 3/8 in bolt hole for any climbing wall type
- Custom colors available



11 in (27.94 cm)

17 in (43.18 cm)



PANELIZED and ICE WALL
UIAA Ice Climbing World Cup - Denver, CO





Since 1994, 1000s of companies, organizations, and homeowners have trusted Eldorado to design, manufacture, and build their custom and modular climbing walls.

Choose the climbing wall and the partnership that lasts.

1699 Cherry Street, Unit B, Louisville, CO 80027
303.447.0512 • 303.447.9191 fax
sales@eldowalls.com
eldowalls.com