



CERTIFICATE OF ANALYSIS WITH PRODUCT SPECIFICATIONS

FDA #: 15910499580

PRODUCT: SansRX CBD Super Balm 600 mg

MPN: 986866

DESCRIPTION: 2 oz Topical Pain Salve

LOT NUMBER: 031523

TEST DATE: March 15, 2021

USES: Topical pain relief.

DOSAGE: As needed.

STORAGE: Cool and dry, below 30c.

SHELF LIFE: 24 months unopened – 12 months after opening in sealed container.

INGREDIENTS LIST: Olea Europaea, Bees Wax, Hemp Oil, Butyrospermum Parkii, Arnica, Lavender Oil, Phyto Rich Full Spectrum Hemp Extract, DMSO, Peppermint Oil, Eucalyptus Oil, Camphor Oil, Menthol, Celery Oil, Lidocaine.

PACKAGING: 2 oz hdpe jar.

CERTIFICATION: This product is in compliance with U.S. Federal regulations.

MISC:

Sanitizing Treatment:	Non-Irradiated / Non ETO.
Certification Status:	cGMP, Derived from organic sources.
Genetic Modification Status:	GMO free.
Country of Origin:	United States.
Vegetarian Status:	Suitable for vegetarians.
Animal testing status:	Negative.

ARSNLabs
4428 Commodity Way STE 300
Shingle Springs, CA 95682
877.730.5016



CERTIFICATE OF ANALYSIS WITH PRODUCT SPECIFICATIONS

FDA #: 15910499580

Micro Analysis

PARAMETER	UNIT OF MEASURE	STANDARD	MEAN RESULT
Aerobic Plate Count	cfu/g	< 10,000	Conforms
Coliforms	cfu/g	0	Not Detected
E. Coli Count Plate	cfu/g	0	Not Detected
Yeast & Mold	cfu/g	< 1	Not Detected
Salmonella	BAM /25g	Negative	Negative
Coag Positive Staph Aure	cfu/g	0	Not Detected
Heavy Metal	ICP-MS		Conforms
Arsenic	ppm	Report Only	Not Detected
Cadmium	ppm	Report Only	Not Detected
Lead	ppm	Report Only	Not Detected
Mercury	ppm	Report Only	Not Detected

Cannabinoid Profile / % by volume / volume per bottle

Component	%	mg
CBD	3.49	431.0
CBG	0.39	110.0
CBN	0.29	79.9
CBC	<LOQ	
D9THC	<LOQ	
Total Cannabinoids	4.17	620.9

N/D = Below Detectable Threshold, N/T = Not Tested, <LOQ = Below Level of Quantification

ARSNLabs
 4428 Commodity Way STE 300
 Shingle Springs, CA 95682
 877.730.5016

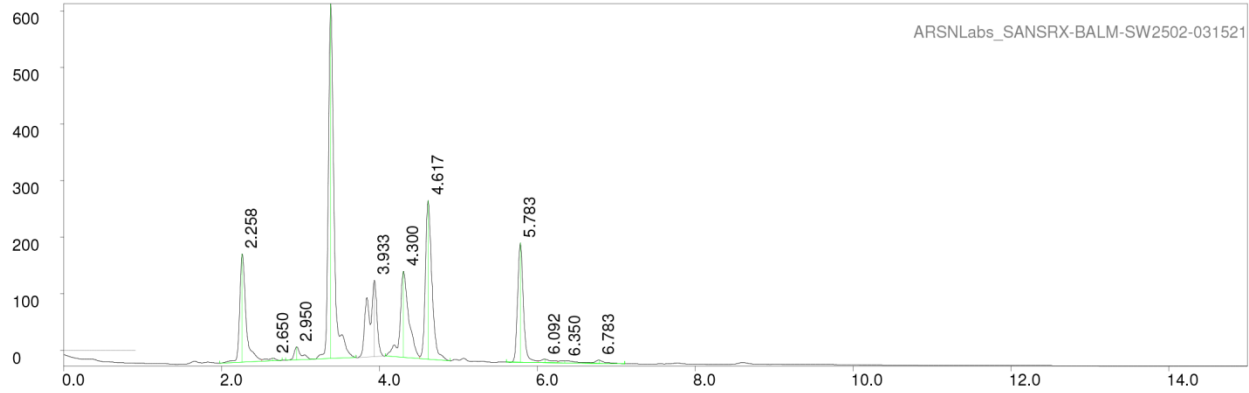
All information herein is offered in good faith, without guarantee or obligation for the accuracy or sufficiency thereof, or of the results obtained, and is accepted at the user's risk.



CERTIFICATE OF ANALYSIS WITH PRODUCT SPECIFICATIONS

FDA #: 15910499580

PAGE 1 LP-chrom 2.10 2018-Dec-16 12:28:08



Program: LP-chrom 2.10 2018-Dec-16 12:28:08
 Running under: Windows NT 6.1 (build 7601, Service Pack 1)
 Plot: C:\LPChrom\Data\ARSNLabs_SANSRX-BALM-SW2502-031521
 Exported: 03/18/21 14:13:29.572
 Program: LP-chrom 2.10 2018-Dec-16 12:28:08
 System: Windows NT 6.1 (build 7601, Service Pack 1)
 Chromatograph using method:
 from file: cannabinoids
 Analytical pump method (max flow = 10 [ml/min])
 TIME FLOW %A %B
 0.0 0.700 30 70
 0.5 0.700 30 70
 6.0 0.700 5 95
 12.0 0.700 5 95
 12.1 0.700 30 70
 15.0 0.700 30 70

Autozero before rec
 Detector Beckman 166 DET/3 on serial port:COM24
 Det:A, wavelen 280 nm

Pump A: Beckman 126 PUMP/2 on serial port:COM24

peak num	retention time [min]	area [mVolt*min]	area percent [%]	height [mVolt]	begin [min]	end [min]	max Y [mVolt]	type (S)ingle (R)+(L)
1	2.25833	17.80161	11.32505	191.56312	1.97500	2.50833	170.96837	R+
2	2.65000	0.65658	0.41770	4.55380	2.50833	2.76667	-13.52590	+L
3	2.95000	2.36543	1.50484	23.08371	2.80833	3.17500	6.60810	R+
4	3.38333	52.22351	33.22360	627.42656	3.17500	3.70000	613.31079	+L
5	3.93333	17.47041	11.11434	135.11732	3.70833	4.07500	124.19406	S
6	4.30000	19.56815	12.44888	152.03076	4.07500	4.50833	139.99838	R+
7	4.61667	26.60439	16.92521	280.81143	4.50833	4.89167	265.61121	+L
8	5.78333	17.72480	11.27618	211.40666	5.60833	6.00833	190.72496	R+
9	6.09167	0.98186	0.62464	5.86209	6.00833	6.25833	-15.46753	R+L
10	6.35000	0.99308	0.63178	3.25640	6.25833	6.68333	-18.61607	R+L
11	6.78333	0.79816	0.50778	5.89502	6.68333	7.10833	-16.88804	+L

Sum area: 157.18798

Peaks accepted: 11 (excluded: 14 total: 25)

ARSNLabs
 4428 Commodity Way STE 300
 Shingle Springs, CA 95682
 877.730.5016