



CERTIFICATE OF ANALYSIS WITH PRODUCT SPECIFICATIONS

FDA #: 15910499580

PRODUCT: SansRx 25 mg CBD Capsules

PRODUCT CODE: 850012310099

PRODUCT DESCRIPTION: 60 cnt Capsules

LOT NUMBER: 051323

MFG DATE: May 13, 2021

USES: As a dietary supplement used as an anti-inflammatory, anticonvulsant, antioxidant, antiemetic, anxiolytic and antipsychotic agent.

DOSAGE: As needed.

STORAGE: Cool and dry, below 30c.

SHELF LIFE: 24 months unopened – 12 months after opening in sealed container.

INGREDIENTS LIST: Phyto Rich Full Spectrum Hemp Extract, Organic Rice Flour, Cellulose (capsule).

PACKAGING: 120cc White HDPE Packer.

CERTIFICATION: This product is in compliance with U.S. Federal regulations.

MISC:

Sanitizing Treatment:	Non-Irradiated / Non ETO.
Certification Status:	cGMP, Derived from organic sources.
Genetic Modification Status:	GMO free.
Country of Origin:	United States.
Animal testing status:	Negative.

ARSNLabs
4428 Commodity Way STE 300
Shingle Springs, CA 95682
877.730.5016



CERTIFICATE OF ANALYSIS WITH PRODUCT SPECIFICATIONS

FDA #: 15910499580

Micro Analysis

PARAMETER	UNIT OF MEASURE	STANDARD	MEAN RESULT
Aerobic Plate Count	cfu/g	< 10,000	Conforms
Coliforms	cfu/g	0	Not Detected
E. Coli Count Plate	cfu/g	0	Not Detected
Yeast & Mold	cfu/g	< 1	Not Detected
Salmonella	BAM /25g	Negative	Negative
Coag Positive Staph Aure	cfu/g	0	Not Detected
Heavy Metal	ICP-MS		Conforms
Arsenic	ppm	Report Only	Not Detected
Cadmium	ppm	Report Only	Not Detected
Lead	ppm	Report Only	Not Detected
Mercury	ppm	Report Only	Not Detected

Cannabinoid Profile / % by volume / volume per capsule

Component	%	mg
CBD	5.26	26.3
CBG	<LOQ	
CBN	0.05	0.25
CBC	<LOQ	
D9THC	0.24	1.2
Total Cannabinoids	5.55	27.75

N/D = Below Detectable Threshold, N/T = Not Tested, <LOQ = Below Level of Quantification

ARSNLabs
 4428 Commodity Way STE 300
 Shingle Springs, CA 95682
 877.730.5016

All information herein is offered in good faith, without guarantee or obligation for the accuracy or sufficiency thereof, or of the results obtained, and is accepted at the user's risk.

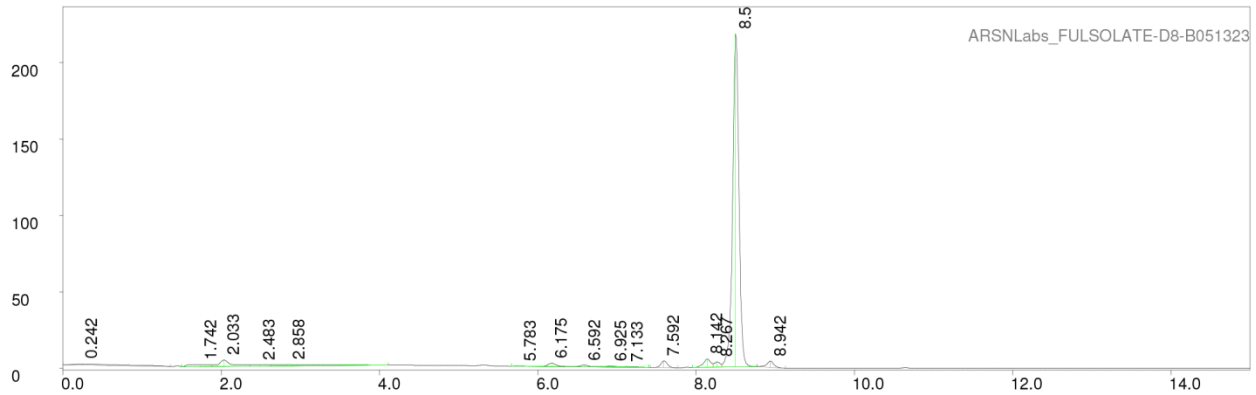


CERTIFICATE OF ANALYSIS WITH PRODUCT SPECIFICATIONS

FDA #: 15910499580

Chromatograph

PAGE 1 LP-chrom 2.10 2018-Dec-16 12:28:08



```

Program: LP-chrom 2.10 2018-Dec-16 12:28:08
Running under: Windows NT 6.1 (build 7601, Service Pack 1)
Plot: C:\LPChrom\Data\ARSNLabs_FULSOLATE-D8-B051323
Exported: 05/13/21 14:33:46.485
Program: LP-chrom 2.10 2018-Dec-16 12:28:08
System: Windows NT 6.1 (build 7601, Service Pack 1)
Chromatograph using method:
from file: cannabinoids
Analytical pump method (max flow = 10 [ml/min])
TIME FLOW %A %B
0.0 0.700 30 70
0.5 0.700 30 70
6.0 0.700 5 95
12.0 0.700 5 95
12.1 0.700 30 70
15.0 0.700 30 70
  
```

```

Autozero before rec
Detector Beckman 166 DET/3 on serial port:COM24
Det:A, wavelen 280 nm
Pump A: Beckman 125 PUMP/2 on serial port:COM24
  
```

peak num	retention time [min]	area [mVolt*min]	area percent [%]	height [mVolt]	begin [min]	end [min]	max Y [mVolt]	type (S)ingle (R)+(L)
1	0.24167	0.70833	2.75524	0.84284	0.00000	1.35833	3.06992	S
2	1.74167	0.44983	1.74972	1.33825	1.50000	1.88333	2.45707	R+
3	2.03333	0.86866	3.37888	4.35928	1.88333	2.35833	5.60954	R+L
4	2.48333	0.27074	1.05310	1.05163	2.35833	2.62500	2.50468	R+L
5	2.85833	0.80706	3.13928	1.01586	2.62500	4.10833	2.63791	+L
6	5.78333	0.02912	0.11327	0.10380	5.66667	6.03333	1.67605	R+
7	6.17500	0.27990	1.08874	2.06479	6.03333	6.46667	3.44842	R+L
8	6.59167	0.14921	0.58038	1.09457	6.46667	6.80000	2.27754	R+L
9	6.92500	0.09418	0.36635	0.77635	6.80000	7.05833	1.79879	R+L
10	7.13333	0.04043	0.15727	0.23632	7.05833	7.40000	1.15843	+L
11	7.59167	0.40780	1.58625	4.40446	7.42500	7.77500	5.08319	S
12	8.14167	0.58418	2.27231	5.40715	7.95833	8.21667	6.26869	R+
13	8.26667	0.29687	1.15476	3.45537	8.21667	8.32500	4.40547	R+L
14	8.50000	20.31056	79.00332	217.59962	8.32500	8.76667	218.71503	+L
15	8.94167	0.41163	1.60113	4.06402	8.76667	9.13333	4.87592	S

Sum area: 25.70849
 Peaks accepted: 15 (excluded: 28 total: 43)

ARSNLabs
 4428 Commodity Way STE 300
 Shingle Springs, CA 95682
 877.730.5016