



CERTIFICATE OF ANALYSIS WITH PRODUCT SPECIFICATIONS

PRODUCT: SansRx CBD Tincture
PRODUCT CODE: 685157
PRODUCT DESCRIPTION: Nutritional Supplement
LOT NUMBER: 05032301
MFG DATE: May 03, 2021

MICRO ANALYSIS

PARAMETER	UNIT OF MEASURE	STANDARD	MEAN RESULT
Aerobic Plate Count	cfu/g	< 10,000	Conforms
Coliforms	cfu/g	0	Not Detected
E. Coli Count Plate	cfu/g	0	Not Detected
Yeast & Mold	cfu/g	< 1	Not Detected
Salmonella	BAM /25g	Negative	Negative
Coag Positive Staph Aure	cfu/g	0	Not Detected
Heavy Metal	ICP-MS		Conforms
Arsenic	ppm	Report Only	Not Detected
Cadmium	ppm	Report Only	Not Detected
Lead	ppm	Report Only	Not Detected
Mercury	ppm	Report Only	Not Detected

Cannabinoid Profile / % by volume

Component	%	mg/oz
CBD	2.26	296.4
CBDA	N/D	
CBG	0.14	3.0
CBN	0.34	7.3
CBC	N/D	
D8THC	<LOQ	
D9THC	<LOQ	
Total Cannabinoids	2.74	306.7

USES: Nutritional Supplement.
STORAGE: Cool and dry, below 30c.
SHELF LIFE: 24 months unopened – 12 months after opening in sealed container.
INGREDIENTS LIST: Hemp Extract, Hemp Seed Oil.
PACKAGING: Bulk.

CERTIFICATION: This product is in compliance with U.S. federal regulations.

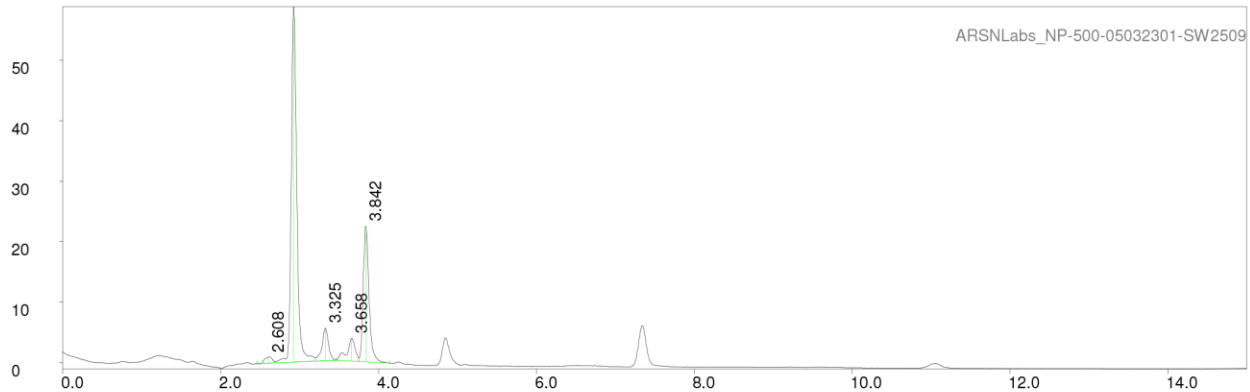
ARSNLabs
4428 Commodity Way STE 300
Shingle Springs, CA 95682
877.730.5016



CERTIFICATE OF ANALYSIS WITH PRODUCT SPECIFICATIONS

Chromatograph

PAGE 1 LP-chrom 2.10 2018-Dec-16 12:28:08



Program: LP-chrom 2.10 2018-Dec-16 12:28:08
 Running under: Windows NT 6.1 (build 7601, Service Pack 1)
 Plot: C:\LPChrom\Data\ARSNLabs_NP-500-05032301-SW2509
 Exported: 05/03/21 12:10:55.360
 Program: LP-chrom 2.10 2018-Dec-16 12:28:08
 System: Windows NT 6.1 (build 7601, Service Pack 1)
 Chromatograph using method:
 from file: cannabinoids
 Analytical pump method (max flow = 10 [ml/min])
 TIME FLOW %A %B
 0.0 0.700 30 70
 0.5 0.700 30 70
 6.0 0.700 5 95
 12.0 0.700 5 95
 12.1 0.700 30 70
 15.0 0.700 30 70

Autozero before rec
 Detector Beckman 166 DET/3 on serial port:COM24
 Det:A, wavelen 280 nm

Pump A: Beckman 126 PUMP/2 on serial port:COM24

peak num	retention time [min]	area [mVolt*min]	area [%]	height [mVolt]	begin [min]	end [min]	max Y [mVolt]	type (S)ngle (R)+(L)
1	2.60833	0.10607	1.36087	0.99399	2.45833	2.69167	0.96361	R+
2	2.92500	4.81044	61.71949	58.76769	2.69167	3.20000	58.92031	R+L
3	3.32500	0.50623	6.49514	5.40835	3.20000	3.45833	5.79213	+L
4	3.65833	0.45219	5.80178	3.76127	3.45833	3.75000	4.07240	R+
5	3.84167	1.91911	24.62272	22.39664	3.75000	4.14167	22.57053	+L

Sum area: 7.79405
 Peaks accepted: 5 (excluded: 31 total: 36)

ARSNLabs
 4428 Commodity Way STE 300
 Shingle Springs, CA 95682
 877.730.5016