



# Nike Ladies Gym Vintage Full-Zip Hoodie CN9402



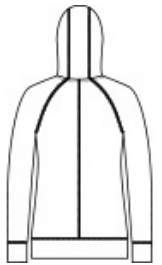
This hoodie has an old-school gym look with new-school style. The design includes an oversized, three-panel hood with draw cords, raglan sleeves, front pouch pockets and open cuffs. The contrast heat transfer Swoosh design trademark is on the right chest. Made of 4.7-ounce, 60/40 organically, sustainably-grown cotton/recycled polyester.

### CARE INSTRUCTIONS

Machine Wash Cold (30c). Wash Inside Out. Wash with Like Colors. Do Not Use Softeners. Do Not Use Bleach. Tumble Dry Low. Do Not Iron. Do Not Dry Clean.



front



back

### HOW TO MEASURE



#### BUST

Measure under the arm and around the fullest part of the bust with arms down, keeping tape horizontal.

### SIZE CHART

	S	M	L	XL	2XL
Size	4/6	8/10	12/14	16/18	20/22
Bust	32 1/2-35 1/2	35 1/2 - 38	38-41	41-44 1/2	44 1/2 - 48 1/2

### COLOR INFORMATION



Team Anthracite  
PMS 7540C



Team Black  
PMS BLACK C



Team Navy  
PMS 533C



Team Royal  
PMS 7687C