

THE DIGGERS CLUB

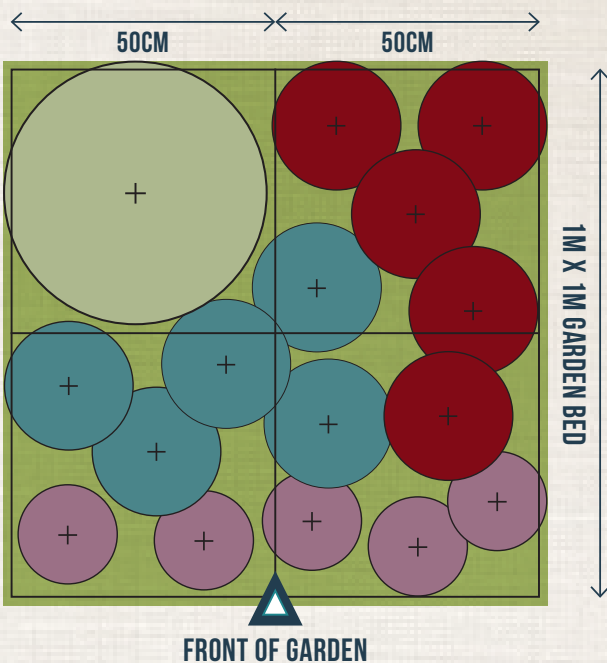
THE *Secret* TO GROWING A LUSH SUMMER GARDEN

CREATE A LUSH SUMMER GARDEN OF SUCCULENTS USING FOLIAGE COLOUR RATHER THAN FLOWERS.

A dry garden of sun lovers doesn't have to be all spiky like cactus. With this selection of succulents you can create a drought tolerant garden, full of colour on the hottest day, that looks good all year using foliage and form.



PLANTING PLAN



CHOOSE PLANTS THAT:

1. Have the vibrancy of a lush garden all through summer, whilst providing interest year round.
2. Have the same water requirements.
3. Have the same shade or sun needs.
4. Complement each other in colour, height and form.

'This Goes With That' combinations from Diggers help you create a lush summer garden at home. This one metre square planting plan is an example of how easy it is — it's like painting by numbers with plants!

Soft succulents and 'one drip' plants are chosen for their unchanging form and foliage colour, creating a soft cooling look for the hot months, whilst providing year round interest. We've selected four Diggers plants from our range that will all grow in full sun or some shade, and will require minimal watering during the summer months.

Follow the plan and you'll be enjoying the expression of lush form and colour, that reflects the cool of the tropics, in the middle of summer. The plants have been chosen to grow into each other and create a natural harmony and softness in the garden.

Check your Diggers *Summer Garden* magazine for other lush summer garden planting ideas. Everyone's approach to colour and form is different, so don't be afraid to create your own garden design.

WHAT IS A SOFT SUCCULENT?

Soft succulents are 'one drip' plants whose leaves are thick and fleshy holding moisture during hot dry spells. They can be highly ornamental and colourful, adding various forms and textures to a garden without the need for flowers.

