

# JAFTEX

EST. 1930

Free Spirit

Henry Glass & Co., Inc.

STUDIO fabrics  
A Division Of JafTex Corporation  
www.studiofabrics.net

Blank  
QUILTING CORPORATION  
the fabric of inspiration

3wishes  
fabric

A.E. NATHAN COMPANY, INC.

Fabric  
Editions, Inc.

## Learn. Make. Love.

# SIY Project



# Sew It Yourself

The following project was created with fabric that your local retailer may no longer have available. You can re-create these projects by replacing the fabrics shown using the fabric key as a guide for similar colorations or styles.

PROJECT DISCLAIMER: Every effort has been made to ensure that all projects are error free. All the information is presented in good faith, however no warranty can be given not results guaranteed as we have no control over the execution of instructions. Therefore, we assume no responsibility for the use of this information or damages that may occur as a result. When errors are brought to our attention, we make every effort to correct and post a revision as soon as possible. We recommend that you test the project prior to cutting for kits. Finally, all free projects are intended to remain free to you and are not for resale.

SIY - Sew It Yourself™ is a trademark of JafTex Corporation

# PATCHWORK PILLOW

## LEARN HOW

- 1 Patchwork basics
- 2 Fussy cutting
- 3 Bias cut piping strips
- 4 Applying piping
- 5 Finishing piping ends
- 6 Envelope pillow back
- 7 Straight line quilting options
- 8 Buttonholes and buttons
- 9 Perfecting square corners



Copyright ©2021 Sew4Home LLC. All Rights Reserved.



ONE DESIGN - FOUR DIFFERENT LOOKS - FREESPIRIT, HENRY GLASS, STUDIOE AND BLANK



*What's the #1 easy sewing project? A pillow! If you've crossed that off your list, and you're ready to kick it up another notch; add patchwork, piping, and more.*

This pretty patchwork pillow is based on a classic four-row grid that allows you to mix and match a wide variety of fabrics from within a favorite collection. You'll learn fussy cutting tips to isolate and showcase a fabric's motifs, basic piecing, how to make and attach bias piping, all the steps for an envelope back with button and buttonhole closure, and other helpful tips and tricks that will take your sewing skills to the next level.

We recommend reading through all instructions prior to beginning your project.

Links within the instructions will take you to the Sew4Home.com website for additional technique tutorials. If you are new to any of the techniques used, these full step-by-step tutorials are helpful if reviewed in advance of the project.

### Sewing Tools You Need

- Sewing Machine and standard presser foot
- Quarter Inch Seam foot
- Zipper foot
- Walking/Even Feed foot or engage your machine's built-in fabric feeding system
- Quilt Bar; *optional*

### Fabric and Other Supplies

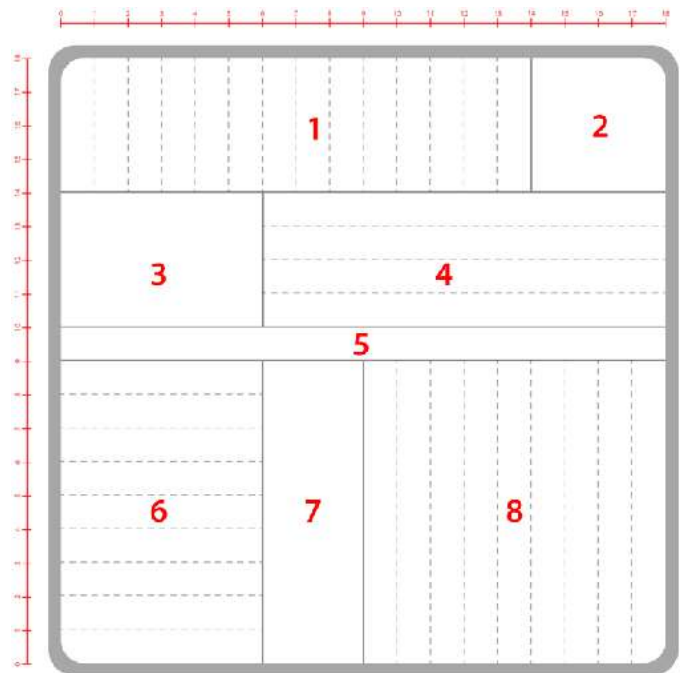


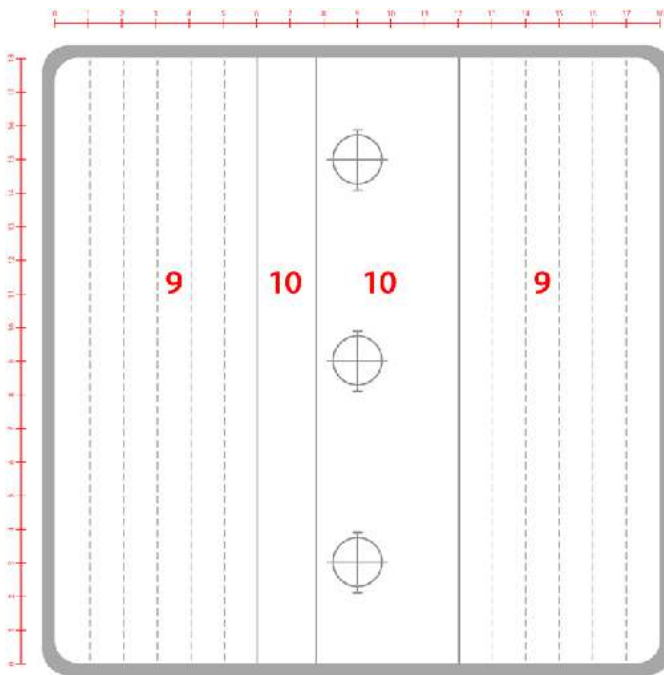
Our custom patchwork design uses up to SEVEN coordinated prints. We originally executed this design in

four different collections from within the JAFTEX family of fabrics: FreeSpirit, Henry Glass, Blank, and Studioe.

For this main sample, we used used six prints from the Tim Holtz Eclectic Elements *Foundations* collection for FreeSpirit Fabrics plus one blender from Tim's *Worn Croc* collection. The yardage amounts listed allow some extra for a nice fussy cut, but to create the *most* fussy cutting options, you may even want to step up to the next standard incremental cut.

The illustrations below show the front/back grids on which we based the patchwork for all FOUR pillow samples. Our Tim Holtz pillow used the greatest variety of fabric options, however, by referring to the grids, you can determine the yardage changes necessary should you wish to include fewer or even more fabrics on your patchwork pillow.



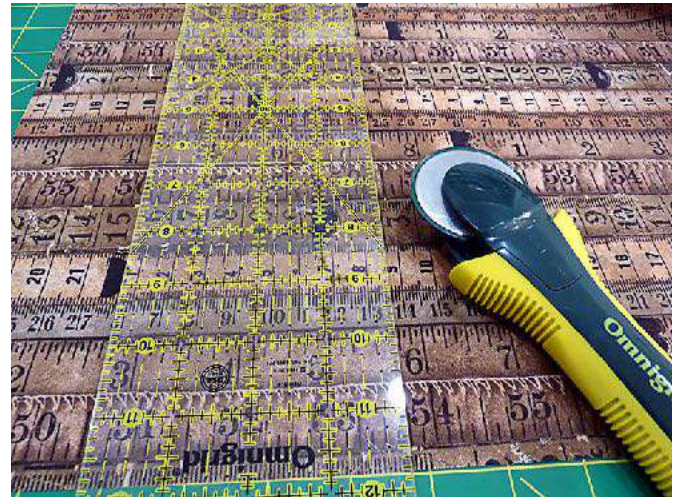


- All purpose thread to match fabric
- See-through ruler
- Fabric pen or pencil
- Iron and ironing board
- Scissors and/or rotary cutter and mat
- Seam gauge
- Seam ripper
- Straight pins
- Hand sewing needle
- Safety pins for pin basting

## Getting Started

NOTE: All cuts are based on a standard width x height motif pattern with width being WOF (width of fabric). If you use any directional prints, as we did, remember to pay attention to their positioning within the patchwork to insure you cut the width and height dimensions correctly. In addition, all our pieces were fussy cut

- **Piping Fabric:** ½ yard of 44" + wide quilting weight fabric; we used *Ticking in Neutral*
- **Fabric A (grid sections: 2,3,7 and 10):** ¾ yard of 44" + wide quilting weight fabric; we used *Worn Croc in Bayou*
- **Fabric B (grid section 6):** ¾ yard of 44" + wide quilting weight fabric; we used *Tape Measures in Neutral*
- **Fabric C (grid sections 4 and 9):** ¾ yard of 44" + wide quilting weight fabric; we used *Rose Parcel in Multi*
- **Fabric D (grid section 1):** ¼ yard of 44" + wide quilting weight fabric; we used *Botanical in Multi*
- **Fabric E (grid section 8):** ¾ yard of 44" + wide quilting weight fabric; we used *Melange in Neutral*
- **Fabric F (grid section 5):** ½ yard of 44" + wide quilting weight fabric; we used *Cigar Box Labels in Multi*
- ⅝ yard of 45" + wide low loft, fusible batting
- 2¼ yards of ¼" piping cord
- THREE 1" to 1¼" buttons
- ONE 18" x 18" pillow form; we used *PillowLoft pillow forms from Mountain Mist*  
NOTE: These were great forms with which to work. Not only are they perfectly plump with excellent loft, they also maintain their shape and wear wonderfully. The woven cover is made with a blend of 65% polyester and 35% cotton with a 100% polyester fiber filling. The zipper closure makes cleaning easy – just remove the fiber filling and toss the cover in the wash.



1. From the piping fabric (*Ticking in Neutral* in our sample), cut enough 2" strips on the bias to equal 80".  
NOTE: If you are new to working with bias strips and/or making your own piping, take a look at [our full tutorial on measuring, cutting, seaming, and more.](#)
2. From Fabric A (*Worn Croc in Bayou* in our sample), cut the following:  
ONE 4¾" x 4¾" for grid section 2  
ONE 6¾" x 4½" for grid section 3  
ONE 3½" x 9¾" for grid section 7  
ONE 6¼" x 19" for grid section 10 underlap panel  
ONE 7¾" x 19" for grid section 10 overlap panel



3. From Fabric B (*Tape Measures in Neutral in our sample*), cut ONE 6¾" x 9¾" for grid section 6.
4. From Fabric C (*Rose Parcel in Multi in our sample*), cut the following:  
ONE 12¾" x 4½" for grid section 4  
TWO 7" x 19" for grid sections 9
5. From Fabric D (*Botanical in Multi in our sample*), cut ONE 14¾" x 4¾" for grid section 1.
6. From Fabric E (*Melange in Neutral in our sample*), cut ONE 9¾" x 9¾" for grid section 8.
7. From Fabric F (*Cigar Box Labels in Multi in our sample*), cut ONE 19" x 1½" for grid section 5.  
NOTE: For this long, skinny strip, we were extra careful to fussy cut Tim's collage design so the printed "seams/lines" between the motifs would align with the actual seams of the patchwork grid above and below.



8. From the fusible fleece, cut the following:  
ONE 18" x 18"  
ONE 11" x 18"  
ONE 10" x 18"
9. From the piping cord, cut ONE 80" length.

### At Your Sewing Machine & Ironing Board

NOTE: All the front and back patchwork uses a ¼" seam allowance. The final perimeter seam uses a ½" seam allowance as does some construction within the envelope overlap.

### FRONT PATCHWORK ASSEMBLY

1. Lay out all the pieces in order to match the front patchwork grid. As mentioned above, make sure all directional motifs are correct top to bottom and left to right.



2. Start with the three pieces for the bottom row of the grid: 6, 7 and 8.
3. Place pieces 6 and 7 right sides together. Pin together along their *inside* 9¾" edges.



4. Attach a Quarter Inch Seam foot. If needed on your machine, adjust settings for both the stitch length and needle position for a ¼" seam allowance. Thread the machine with thread to best match your fabric in the top and bobbin. We used an ecru thread throughout.
5. Using a ¼" seam allowance, stitch together.

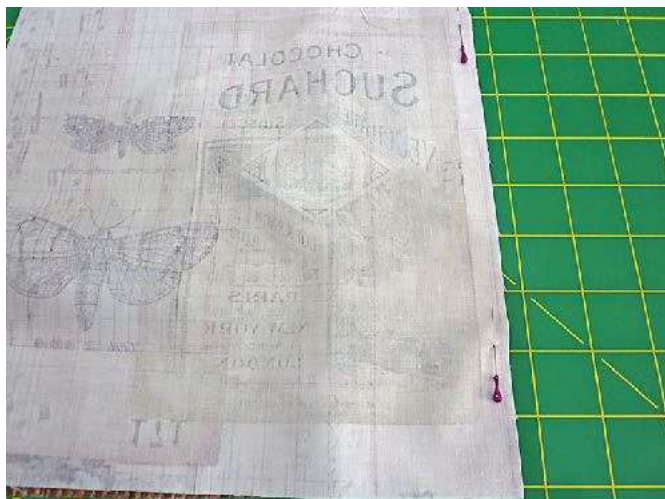




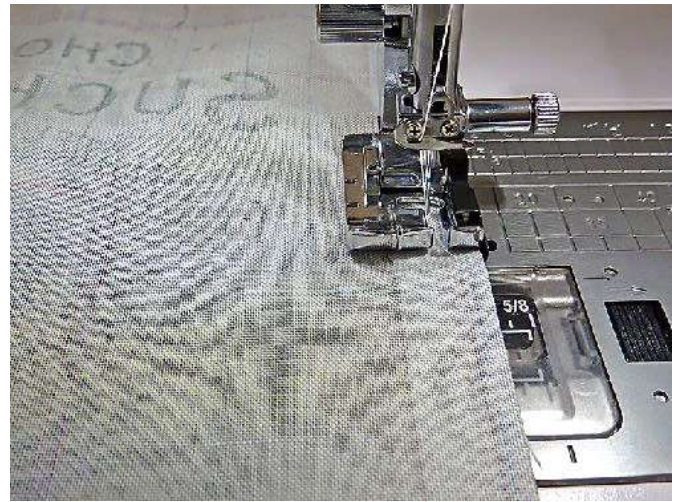
6. Find piece 8. This is a good example of a directional motif. We made sure it was positioned correctly prior to pinning.



7. Pin piece 8 to the sewn 6/7 section, right sides together.



8. Using a 1/4" seam allowance, stitch together. This forms the bottom row.



9. Press both seam allowances together and towards the center of the row.



10. Find piece 5. It is a row in and of itself. As mentioned above, we were very careful with our fussy cutting to make sure the printed lines within our motif would align with the actual seams of the patchwork rows above and below. In the photo, you can see how the motif marked with the pin aligns with the seam.



## Jaftex SIY Patchwork Pillow by Sew4Home



11. Pin the bottom raw edge of piece 5 across the top raw edge of section 6/7/8, right sides together.



12. Using a  $\frac{1}{4}$ " seam allowance, stitch together.



13. Find pieces 3 and 4, which will make up the next row.

14. As you did above for the bottom row, first check that all your directional motifs are correctly positioned.



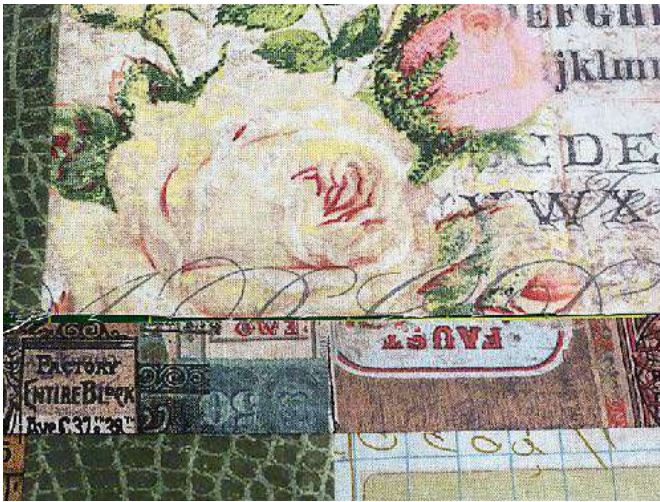
15. Pin pieces 3 and 4, right sides together along their inner  $4\frac{1}{2}$ " edges and stitch, using a  $\frac{1}{4}$ " seam allowance. Press the seam allowance together and toward piece 3.



16. Pin this new row to the completed two row panel, right sides together. You are pinning the bottom raw edge of the 3/4 row to the remaining top raw edge of piece 5. Be extra careful to make sure the vertical seam in row 3/4 aligns with the vertical seam (pieces 6/7) in the bottom row.



## Jaftex SIY Patchwork Pillow by Sew4Home



17. Stitch across, using a 1/4" seam allowance.



18. Press the seam allowance together and down towards piece 5.

19. Finally, find the last two pieces: 1 and 2.



20. Pin and seam them together in the same manner to complete this final top row. Press the seam allowance together and towards piece 2.

21. Pin the bottom raw edge of row 1/2 right sides together with the remaining top raw edge of row 3/4.



22. Stitch across, using a 1/4" seam allowance. Press the seam allowance together and up towards row 1/2.



23. Press the finished front panel flat from the right side.



**QUILTING THE FRONT**

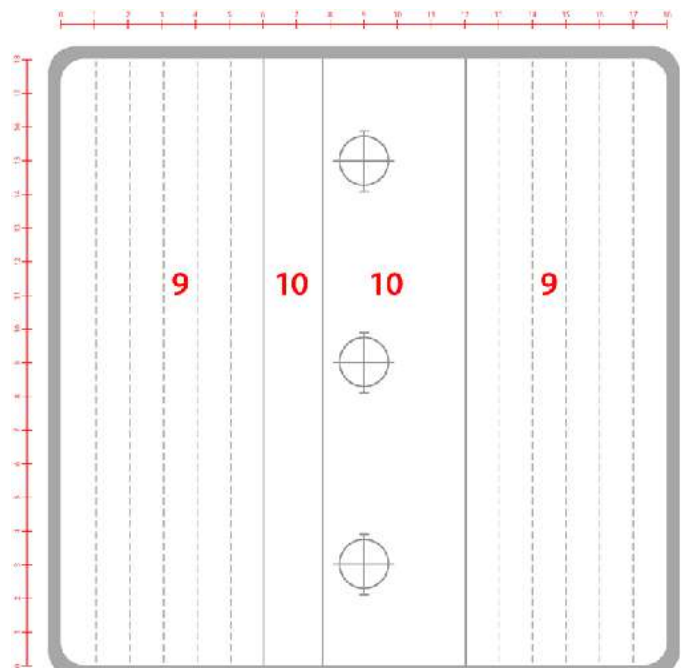
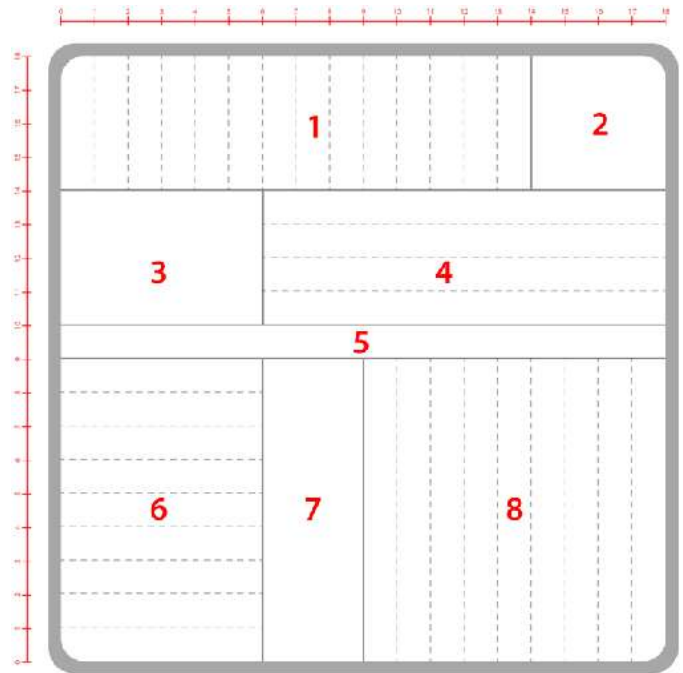
1. The quilting on the pillow front is simple straight lines spaced 1" apart. To make it more interesting and to work within the patchwork design, some of the sections have quilting lines that run horizontally, some have lines that run vertically, and some have no quilting at all. The result is a very interesting textual finish.
2. Our original Grid Drawings are repeated here so you can see the recommended direction of all our quilting lines.



24. Find the 18" x 18" square of fusible fleece.
25. Center the fleece on the wrong side of the completed front panel so there is 1/2" of fabric showing beyond the fleece on all four sides.



26. Following manufacturer's instructions, fuse the fleece in place securely from both the front and back.





3. If necessary, rethread your machine with the thread you wish to use for all your quilting. We recommend staying with one thread color in a neutral tone that best coordinates with all your fabrics. As with the construction, we used an ecru thread for the quilting.
4. Attach a Walking/Even Feed foot or engage your machine's built-in fabric feeding system (this was our choice).
5. Re-set for a slightly lengthened straight stitch.
6. There are two ways to set-up for perfectly spaced straight line quilting. The first is to use a Quilt Bar that can be adjusted and set to a 1" increment.
7. The first line of quilting in any section should start 1" from the nearest seam.
8. Once this first line has been stitched, the foot is positioned so the quilt bar runs along the previous line to stitch the next line in the sequence. We stitched the vertical lines first.



9. Start and stop each line of quilting at the seam line. Do not cross the seam line. If it is a feature on your machine, we recommend using a lock stitch for the neatest start and finish. If you do not have this feature, leave your thread tails long at the start and end of each line of quilting. When done, pull the threads through to the back and hand knot to secure.

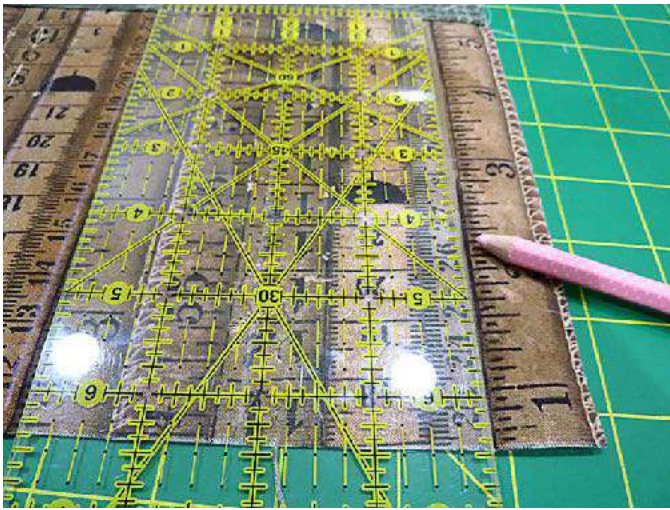


10. Stitch the horizontal lines in the same manner.



11. If you don't have access to a quilt bar, you can measure and mark parallel lines with your ruler and a fabric pen or pencil.  
*NOTE: Remember, any time you are working on the right side of your fabric, make sure your marking tool is one that will easily wipe away or will vanish with exposure to the air or the heat of an iron.*
12. Again starting from the nearest seam, measure and mark in 1" increments across the section.





13. Stitch along the drawn lines.



NOTE: We are stitching through just TWO layers: the top patchwork panel and the layer of fusible batting. Often, when quilting, you have a three-layer quilt sandwich with an additional thin layer of backing. This backing can make it easier for the panel to move across the needle plate. We had no trouble at all with our two layers, but if you find your machine is struggling or seems to be “grabbing” the batting, try adding the additional layer of backing. You can use muslin or scrap cotton. Simply, cut a 18” x 18” panel and layer it with your top/batting panel. Add a few large safety pins through the center to help hold the layers, positioning these pins within the sections that do not have lines of quilting.

14. Set aside the finished front panel.

### **BACK PATCHWORK ASSEMBLY AND QUILTING**

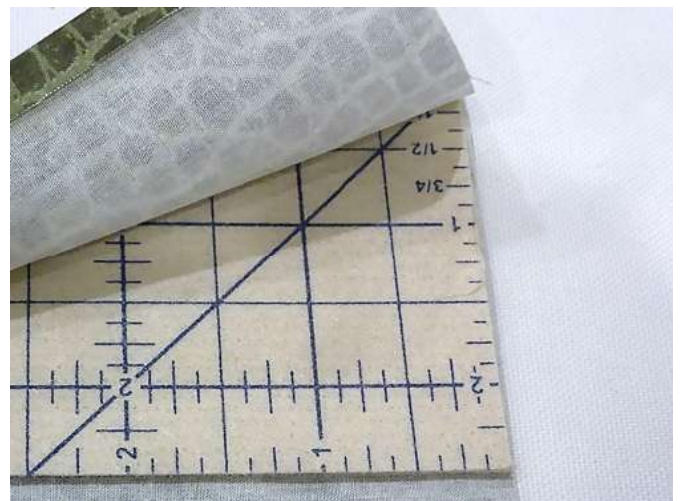
1. Find all the elements for the back panels: overlap piece 10, underlap piece 10, the two pieces for the #9 grid

sections, and the two remaining fusible fleece rectangles.

2. On the overlap piece 10, make a wide hem along the inner edge.  
NOTE: *The fabric we used for our #10 pieces is non-directional, so either side could have been the inner edge. We simply picked one. If you have a directional fabric, make sure you are hemming what will be the finished inner edge that will overlap at the center of the pillow.*
3. To make the wide overlap hem, fold back the raw edge  $\frac{1}{4}$ ” and press.



4. Fold back and additional  $2\frac{1}{2}$ ” and press again.



5. On the underlap panel, you’ll make a narrow hem. Fold back the raw edge  $\frac{1}{4}$ ” and then fold back just an additional  $\frac{1}{2}$ ”. Press well.

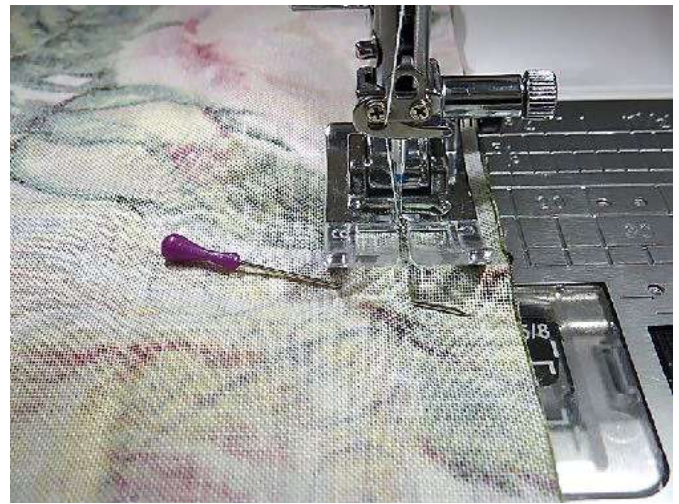




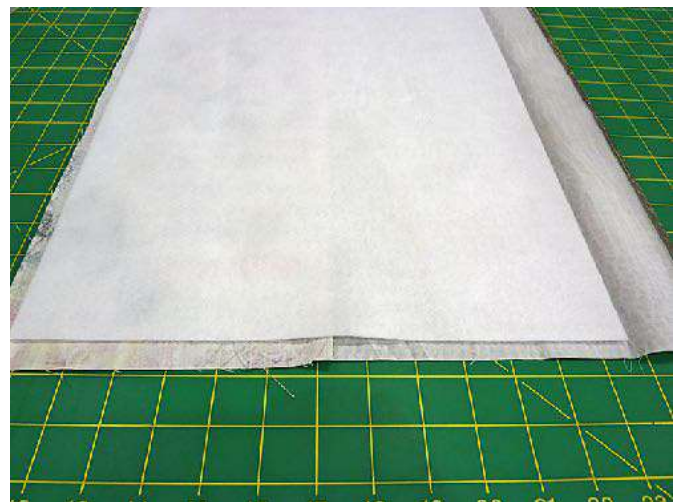
6. Lightly pin the hems in place.
7. Pin a hemmed panel right sides together with each of the 9 pieces. You are pinning the raw edge of the hemmed panel to the inside raw edge of outer panel. As always, make sure any directional motifs are correctly positioned so when the final button overlap is in place everything looks good top to bottom and left to right.



8. Re-thread the machine if necessary with thread to best match the fabric in the top and bobbin (we continued to use the same ecru) and re-set for a standard stitch length.
9. Using a  $\frac{1}{2}$ " **seam allowance**, stitch each pair of panels together.



10. Press each seam allowance together and toward piece 10.
11. Place each seamed panel wrong side up on your ironing surface. Unpin/unfold the hem so the crease lines are visible. Find the appropriate panel of interfacing (the 10" wide piece is for the overlap, the 11" for the underlap).
12. Position the fleece on the wrong side of the fabric so the inner edge is aligned with the innermost crease line of the hem. On the other three sides, there should be  $\frac{1}{2}$ " of fabric showing beyond the fleece.



13. Following manufacturer's instructions, fuse each fleece panel in place.





14. Re-fold each hem into position, which means it is now wrapping over the fused fleece. Press again so each panel is nice and flat.



15. Re-thread the machine if necessary with thread to best match the overlapping panels in the top and bobbin. We *did* change out our thread this time to match the dark green of the *Worn Croc* fabric.
16. Re-set for a slightly lengthened stitch and topstitch each hem in place, using the markings on your machine's throat plate to run your topstitching seam along the inner fold of each hem.



17. If necessary, re-thread the machine with the same thread you used for quilting on the front of the pillow. Keep a slightly lengthened straight stitch.
18. Use the same method as above to add 1" spaced vertical quilt lines within each grid section 9. Refer to the grid drawings above if needed. There is *no quilting* within the button overlap panels.

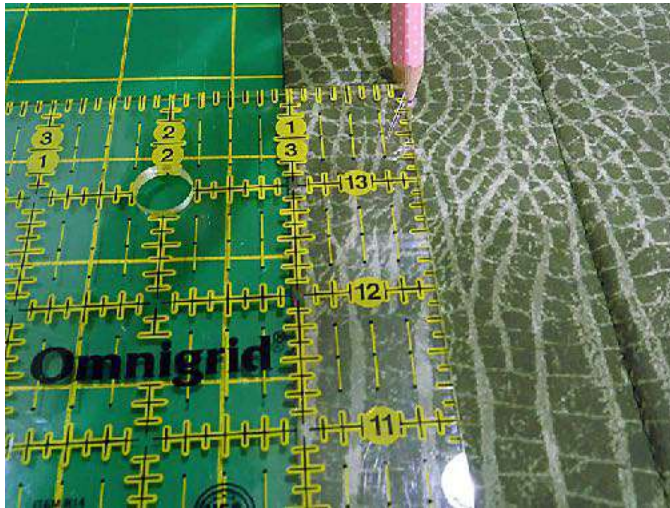


### **BUTTONHOLES**

1. Find the back panel that will be the overlap panel. It's the slightly narrower panel with the wide hem.
2. Mark for the three buttonholes. They should be evenly spaced. If you are using the same size button as recommended, one buttonhole should be 3½" down from the top raw edge, one 3½" up from the bottom raw edge, and the third in the center – 9½" down the the top raw edge.



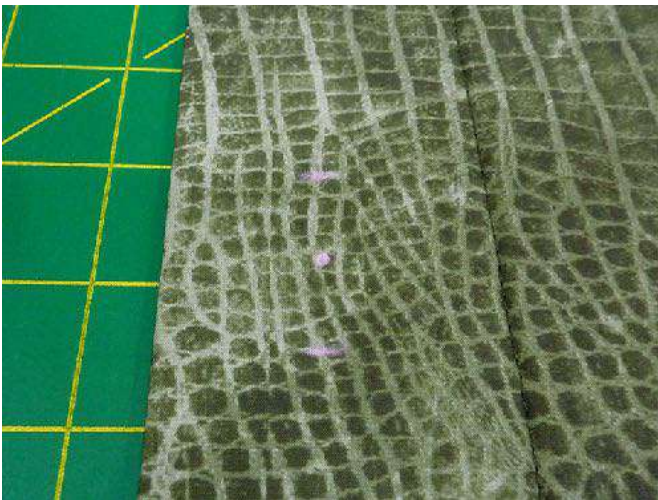
## Jaftex SIY Patchwork Pillow by Sew4Home



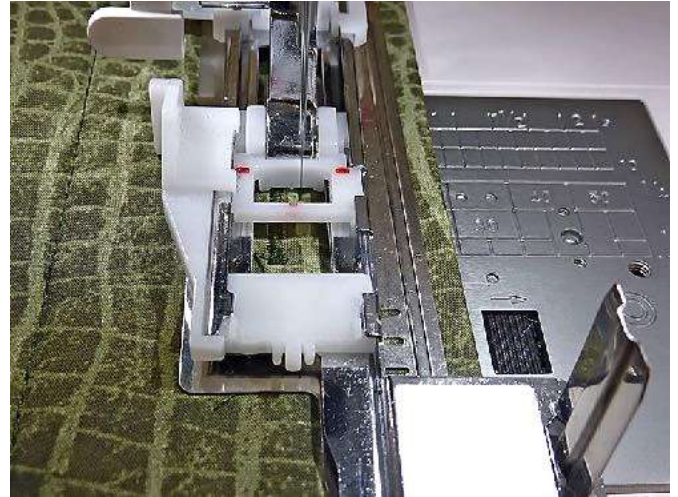
3. For all three, they are then centered side to side within the wide hem of the #10 overlap panel.



4. Use a button to confirm the top, bottom and center point for each buttonhole.



5. Referring to your manual, set up your machine to make a vertical buttonhole at each of the three marked points.



6. When finished, run a line of seam sealant down the stitched buttonhole.



7. Carefully cut open each buttonhole.





8. With both back panels right side up, overlap the two panels (overlap on top, underlap on bottom) until the width of the overlapped panels equals 19". Pin in place top and bottom. If desired, you could hand or machine baste at the top and bottom for additional security to keep these two panels through the remainder of construction.



### **MAKE AND PLACE PIPING**

1. If this is your first time making piping, see our tutorial, [How to Make and Attach Your Own Piping](#).
2. If necessary, re-thread the machine with thread to best match the piping fabric in the top and bobbin. Re-set for a straight stitch. Attach a standard presser foot.
3. Find all the 2" bias-cut strips.
4. You'll attach the strips end to end to equal your final 80" of needed length. To do this, place the strip lengths at right angles to one another.



5. Stitch across, using a 1/4" seam allowance.



6. Repeat to stitch together as many bias-cut lengths as necessary to yield 80".
7. Press each tiny seam allowance open and flat.
8. Press the completed strip flat.
9. Place the flattened strip wrong side up on your work surface. Find the 80" length of piping cord. Lay the cord down the center of the strip on the wrong side.



10. Wrap the fabric, right side out, around the cord. The raw edges of the strip should be flush. Lightly pin close to the cord to hold it in place.
11. Lengthen the stitch for basting. Attach a Zipper foot.
12. Stitch close to the cord to create your fabric covered piping.





13. Find the front panel.

14. Starting at the center bottom, pin the piping to the right side of the panel, aligning the raw edges of the piping fabric with the raw edge of the panel, and leaving about 2" free at the head and tail.



19. Fold under the end of the loose fabric to create a clean edge. Trim away excess fabric if necessary prior to folding. Overlap the folded end to conceal the piping cord. Pin in place. This joint should lay flat against the pillow panel.



15. Continue pinning around the perimeter of the pillow. At each corner, you can clip into the piping to better allow it to curve around the corner. Be careful to not cut too deep; keep the snip below the basting.

16. When you get back to your starting point, lay the piping against the fabric so it is flat and smooth.

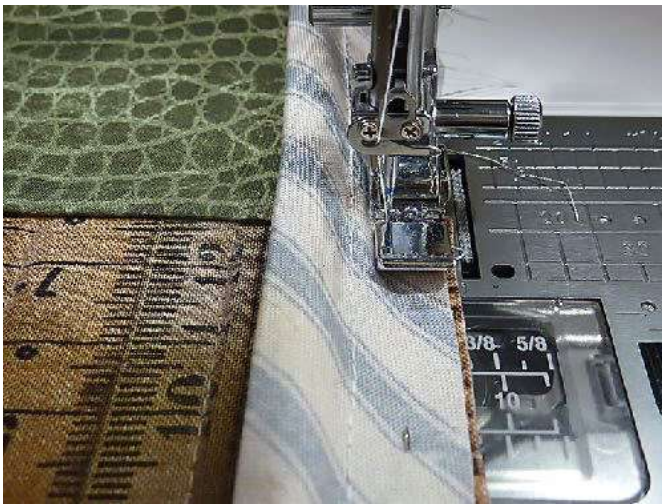
17. With a seam ripper, peel back the fabric on the tail to expose the cording underneath.

18. Trim the end of cording tail so it exactly butts together with the head of the cording.



20. Still using a Zipper foot, and with the stitch still lengthened for machine basting, baste the piping in place around the entire panel. Run the seam as close to the piping cord as possible.





### ASSEMBLE FRONT TO BACK AND ADD BUTTONS TO FINISH

1. Place the front panel right side up and flat on your work surface.
2. Find the back panel, it should still be secured top and bottom, within the seam allowance, to hold the panels together. Working with the two panels as one unit makes it easier to stitch front and back together without shifting.
3. Place the overlapped back panel right side down on the front panel, sandwiching the piping between the layers. Pin the layers together along all four sides.



4. Re-set the stitch length to normal, but keep the Zipper foot in place.
5. Stitch around all four sides, stopping to sharply pivot at each of the four corners. This seam allowance should be 1/2" but could be slightly wider or narrower; the goal is to stitch as close to the cord as possible.



6. Clip each corner at the diagonal, being careful to not clip into the seam.
7. Turn the cover right side out through the back overlap. Gently push out and smooth all four corners. A long, blunt tool works well for this, such as a knitting needle, chopstick or point turner. Press flat.
8. Insert a fabric pen or pencil through the exact center of each buttonhole to mark the position for each button on the underlap panel below.



9. Thread the hand sewing needle and hand stitch each button in place. We used a decorative "X" stitch for our four-hole buttons.





10. Insert the pillow form through the overlap opening and button closed.

*The explanations and instructions in this PDF are published in good faith and have been reviewed for accuracy, however, no warranty, either expressed or implied, is made nor are successful results guaranteed. Since the nature and quality of the materials used and the workmanship of the individual creator are unknown, the finished products bear no warranty as to their safety or ability to perform any function adequately.*

*Sew4Home LLC shall not be liable for any special or consequential damages that result from the use of, or the inability to use, these instructions or the performance of the products recommended.*

*Should a typographical error be found, we will make every effort to resolve it. Once resolved, no restitution beyond replacement with a corrected version will be made.*

*All Sew4Home patterns and instructions are copyrighted and are for personal use only. All material (projects, artwork, text, patterns, photos, etc.) on Sew4Home is protected under the copyright laws. The instructions themselves and any associated patterns or pictures cannot be reproduced or reprinted in any way without the written permission of Sew4Home LLC. This also means our tutorials cannot be reprinted as a handout for use within a class without prior written permission. In addition, manufacturing of products made from our original designs for mass production or commercial use is strictly prohibited.*