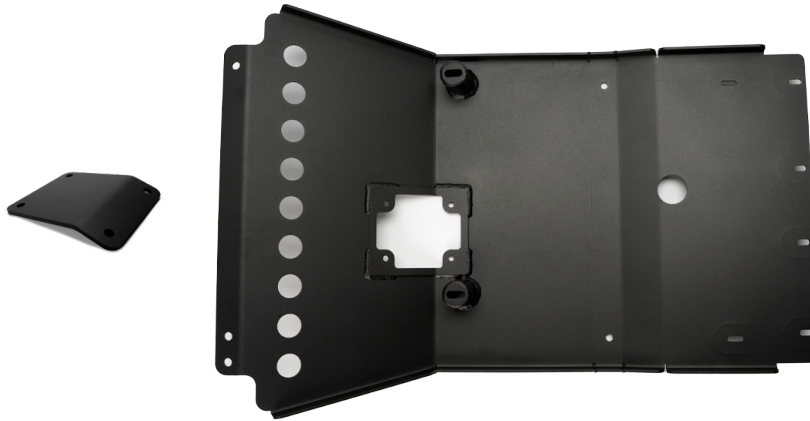


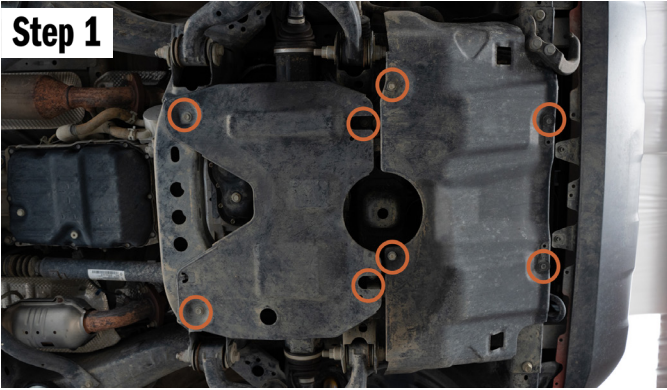
HOW TO INSTALL: TOYOTA TACOMA FRONT SKID PLATE



HARDWARE LIST

- (4) 3/8-16 -1" Socket Head Bolt
- (4) Clip-On Nut
- (2) M8-1.25 - 35mm Bolt
- (2) M8 Split Lock Washer
- (2) M8 Flat Washer
- (2) 5/16 ID x 3/4 OD Aluminum Spacer

Step 1



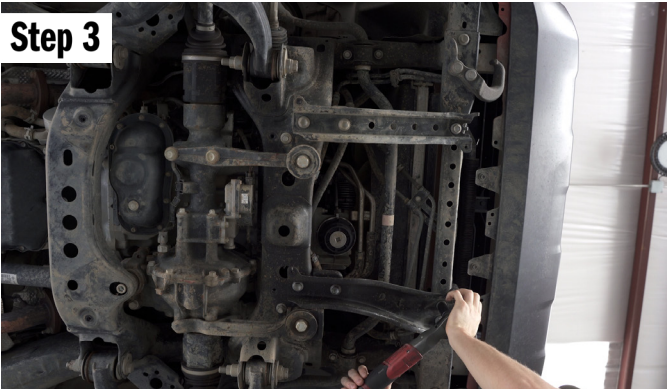
Remove the 12mm bolts on the existing skid plates. There are (4) on the front skid and (4) on the rear. Both skids have an upper lip towards the front of the vehicle that will swing downwards once the bolts are removed.

Step 2



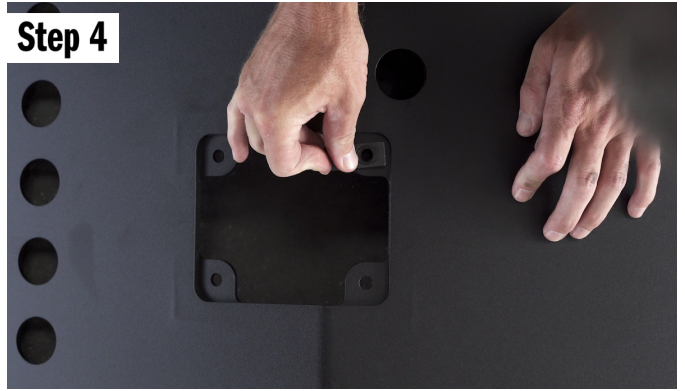
It is recommended to move the front bolts, then remove the back bolts to allow the hooks to catch and swing forward the skid. Once both plates have been removed, set them aside and hang onto the hardware.

Step 3



With the factory skid removed, we now need to remove the factory front supports. Using a 17MM socket, remove the (7) bolts.

Step 4



Then, add the oil filter door to the skid plate by sliding on the clip on nuts over the tabs inside the oil filter doorway. Be sure to align the holes to allow for the bolts to install easily.

Step 5



Next install the (4) 3/8's bolts into the holes. These should fit flush to the frame.

Step 6



With a floor jack or friend lift the skid plate in place. Starting at the very front, install the factory bolts you just removed in all (3) locations. Leave these loose

Step 7



Towards the back end of the skid, take your aluminum spacers, place it between your crossmember and skid plate. You can use a screwdriver to align the holes.

Step 8



Use an M8 bolt, put on a split lock washer, and a flat washer, and thread them into the holes. Put these in snug, **DO NOT TIGHTEN.**

Step 9



Starting with the (2) 17MM bolts in the center, tighten them until tight. The skid plate will suck up into position. Then tighten the (3) bolts in the front, then the (2) 13mm bolts in the rear.