



-INSTALLATION- INSTRUCTIONS

▶ LP ADVENTURE MAIN SKID PLATE ◀

SUBARU FORESTER 2019-2020

CONGRATULATIONS FOR YOUR NEW LP AVENTURE MAIN SKID PLATE!

If you have any questions or need assistance
during the installation please
contact our team. You
can find the information
on the last
page.



IN THE BAG



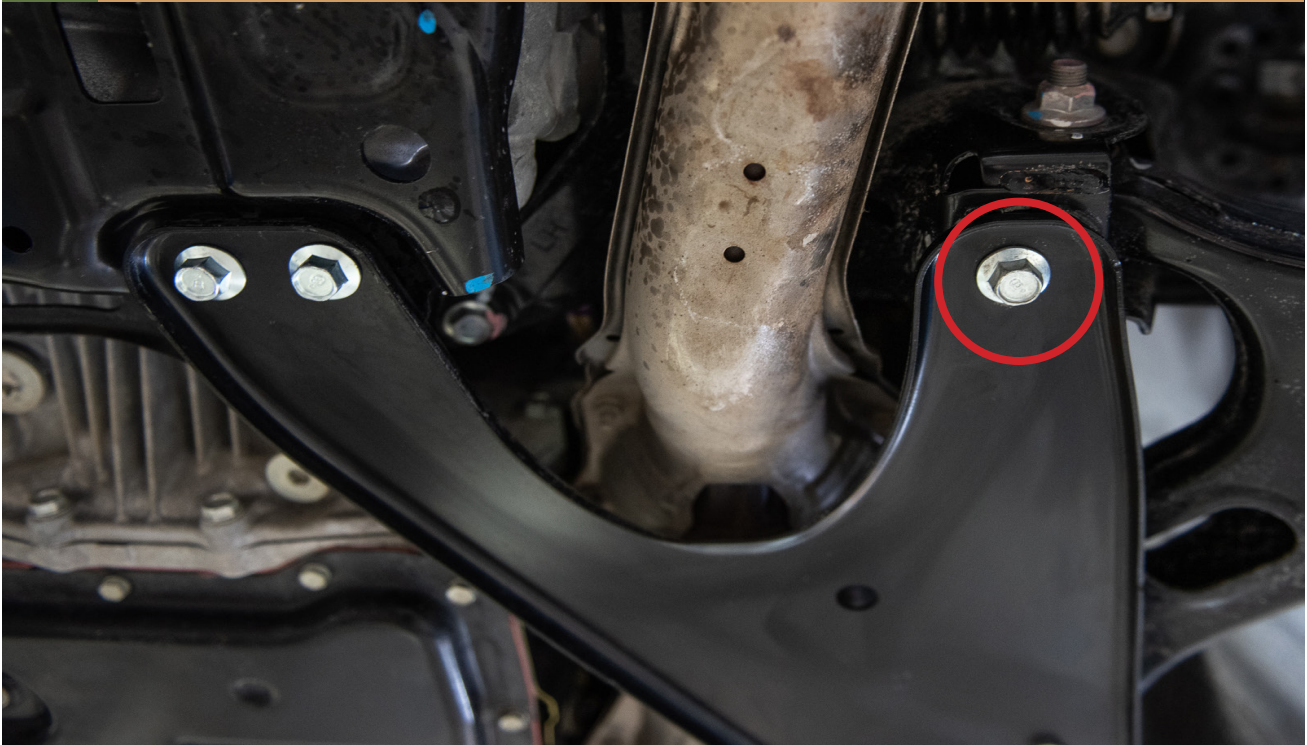


NECESSARY TOOLS

- We recommend the use of a lift**
- Transmission jack or regular jack**
- Ratchet**
- 14mm Socket**
- 17mm Socket**

1

WITH A LP AVENTURE BUMPER GUARD INSTALLED REMOVE THESE BOLTS FOR THE REAR OF THE SKID PLATE





2

USE A JACK AND A PIECE OF WOOD TO HELP STABILIZE THE MAIN SKID PLATE DURING INSTALLATION



3

RAISE THE MAIN SKID PLATE INTO PLACE





4

BOLT FRONT OF THE MAIN SKID PLATE





5

INSTALL SPACERS AT THE REAR OF THE MAIN SKID PLATE





6

BOLT UP THE REAR OF THE MAIN SKID PLATE



7

TIGHTEN ALL HARDWARE



8

INSTALLATION COMPLETE!



▼
NOTES:

****Tighten all the bolts to the manufacturer's specifications with a Torque Wrench****

**Double check your work.
Reinstall the wheels and be sure to tighten
the nuts with a torque wrench.**

**Products warnings:
<https://lpaventure.com/pages/products-warnings>**

**Limited product warranty:
<https://lpaventure.com/pages/limited-prod->**



**You have completed the installation.
Thank you for your interest
in our products.**

**For all requests, information or
assistance: Contact our team
by phone at
1 (866) 562-1316**

**We are available Monday to Friday
Between 8AM and 5PM (EST).**

**Or by email at :
SALES@LPAVENTURE.COM
WWW.LPAVENTURE.COM**

NOW, ENJOY THE RIDE!