



The Ultimate Air Cleaning Machine  
**ERIK650A Air Purifier**  
User Guide



Made in USA

## **Safety Precautions.**

READ ALL INSTRUCTIONS BEFORE USING THIS APPLIANCE.  
TO REDUCE THE RISK OF FIRE, ELECTRIC SHOCK, OR INJURY:

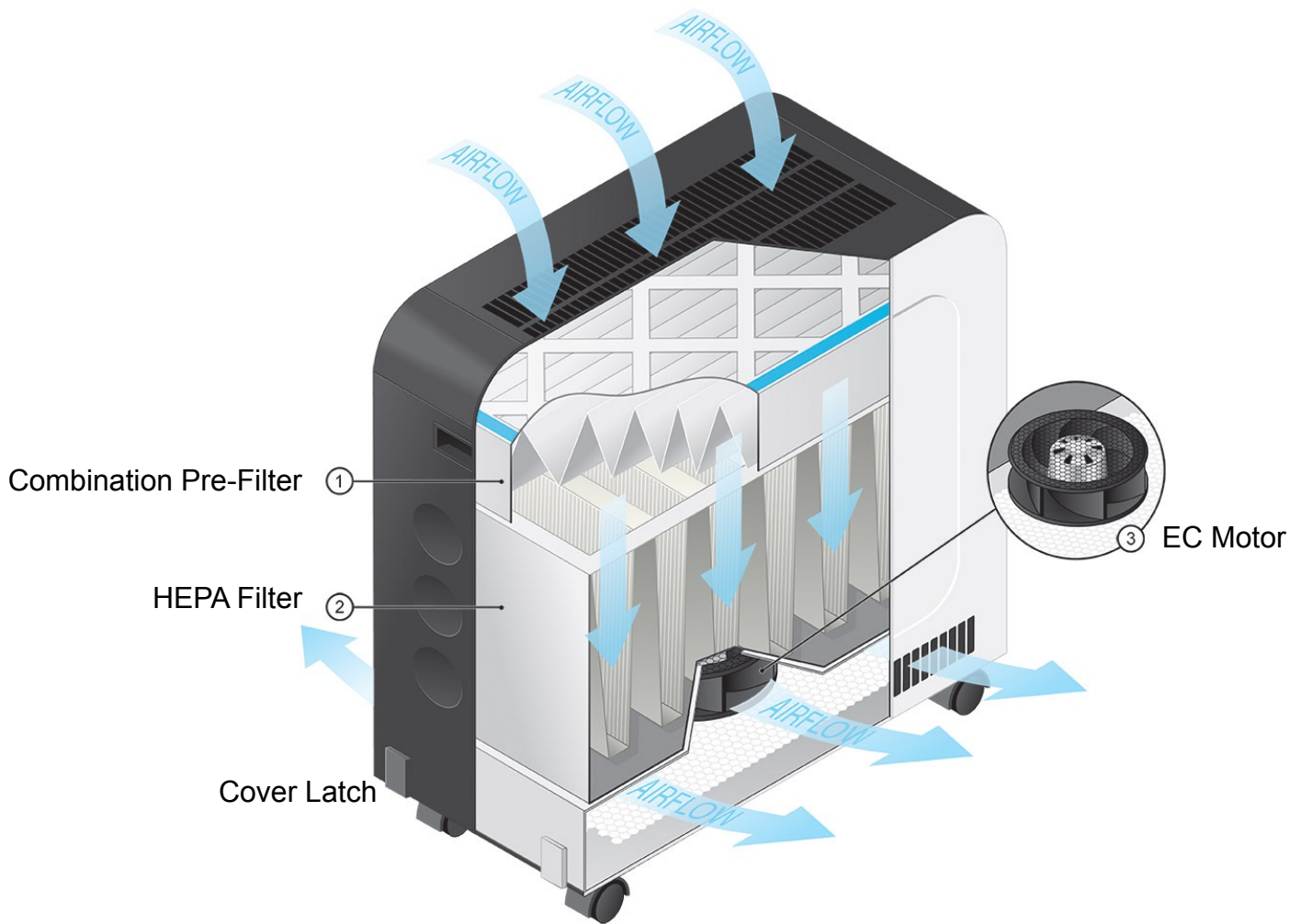
1. Do not attempt to service the air purifier in any way other than to replace or clean the air filter.
2. This product operates at 120V AC, 60Hz only.
3. Always unplug the power cord from the electrical outlet when the air purifier is not in use or when changing the filter.
4. Never run the air purifier unless it is fully assembled.
5. Do not alter the plug in any way.
6. Always turn off the air purifier before unplugging the air purifier from outlet.
7. Do not place the cord near a heated surface.
8. Never operate the air purifier if the plug or cord is damaged or appears damaged. Only qualified service personnel should ever replace or attempt to replace a damaged power cord.
9. Never use the power cord to pick up, carry, drag, pull, or lift the air purifier. Do not pull the cord against or around sharp corners and edges.
10. Always remove the plug from its power outlet by holding onto the plug itself and pulling gently.
11. Use care when operating the air purifier by keeping all foreign objects, fingers, body parts, hair, loose clothing, jewelry, etc away from openings.
12. Do not drop items into the air purifier.
13. Never touch the air purifier or its plug when your hands are wet.
14. If lifting the air purifier, ensure the clasps are properly secured before lifting and lift by the carrying handles.
15. Do not use outdoors.
16. Do not operate without the filters installed.
17. Only use in an upright position.
18. Use only as described in this manual. Use only Oransi replacement filters.

**Please save these instructions.**

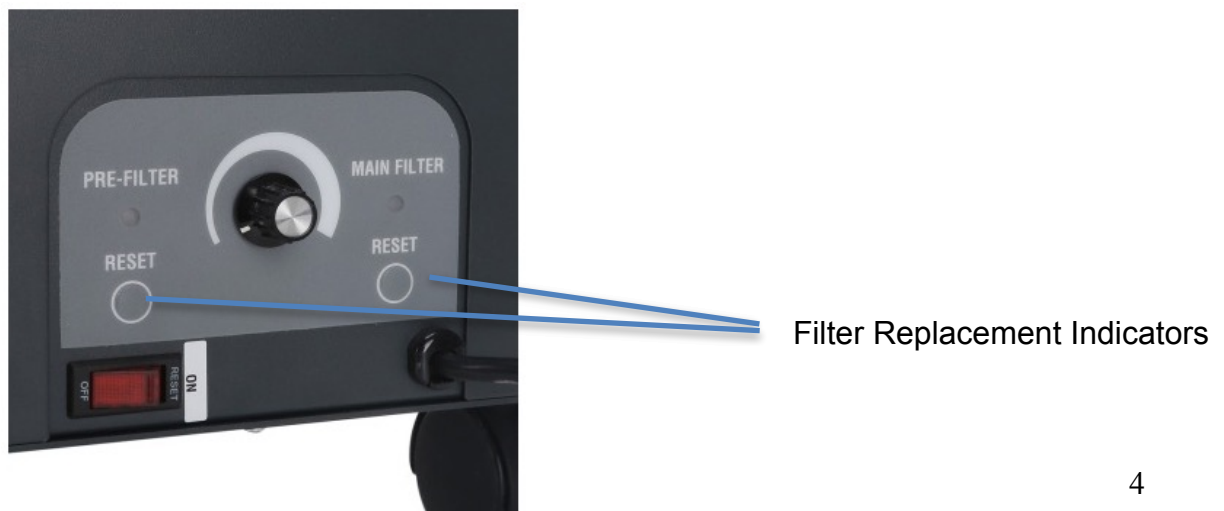
## Contents

2	<b>Safety</b>
2	Important Safety Instructions
4	<b>Chapter 1: At a Glance</b>
4	Overview
4	Inside the Air Purifier
4	User Interface
5	Filter Overview
5	EC Motor/Fan Overview
6	<b>Chapter 2: Getting Started</b>
6	Where to Use
7	Troubleshooting
9	<b>Warranty</b>
9	10 Year Warranty

## Chapter 1 At a Glance.



## User Interface.



**Power Switch** – the Off/Reset switch at the back of the air purifier serves two purposes: it controls power to the unit and works as a circuit breaker. To operate the air purifier the reset/On side of the switch must be pressed down. There is no light with this switch so it will not illuminate when on. This is to keep the unit from generating light if used in a bedroom.

### Filter Overview.

**Combination Pre-Filter** – The pre-filter is a combination MERV15 particulate filter and treated GAC (granular activated carbon). Our proprietary treated coconut carbon filter (GAC) removes a wide variety of gases such as VOC's, smoke, formaldehyde, ozone, smog, and combustion gases. This filter should be replaced with every 9-12 months of use.

**Main HEPA Filter** – The main HEPA filter is rated at 99.99% at 0.3 microns. This filter should be replaced with every 24-36 months of use.

### EC Motor/fan overview



### EC Motor/Fan.

When you selected the ERIK Air Purifier you chose the latest and best German engineered motor available. EC (Electrically Commutated) motors use electronics to convert the AC voltage to DC to run the motor.

### EC Advantages

- More efficient and use up to 90% less power.
- More reliable since it runs cooler.
- More compact.
- Quieter - no motor hum that you can get with an AC motor.

Why does the motor/fan start and stop more slowly than an AC motor? EC motors have a soft start programmed into the motor to limit the start-up current the motor draws (there are electronics built into the motor). The ramp down after power is removed is only a function of the inertia of the fan and the friction of the bearing system. A high quality bearing system will take longer to slow down and stop since the friction is minimized (alignment is better, lubricant is better, etc.).

## **Chapter 2 Getting Started**

Your air purifier comes with the filters installed, so you should only have to plug it in and begin using.

### **How to Use**

Always operate indoors, preferably on a level surface.

If used in the home, we recommend operating the unit wherever you spend most of your time – typically a bedroom or living area. Set the fan speed to a noise level that is comfortable for you. In most cases you can run the air purifier on a very low fan speed setting so it is quiet. If you have a larger living area you may want to run it on a higher fan speed when you are not in the room and then run it on a low speed when you are present.

### **Casters**

The Erik comes with casters to help in moving the unit. Two of the casters have a wheel lock and to ease movement so make sure they are unlocked when moving.

### **How to Replace the Filters**

Follow the steps on pages 7 and 8 to remove the cover and access the filters. Most filter changes will simply be a replacement of the pre- filter. All of our used filters can be placed directly in the trash.

### **Reset the Filter Replace Indicator**

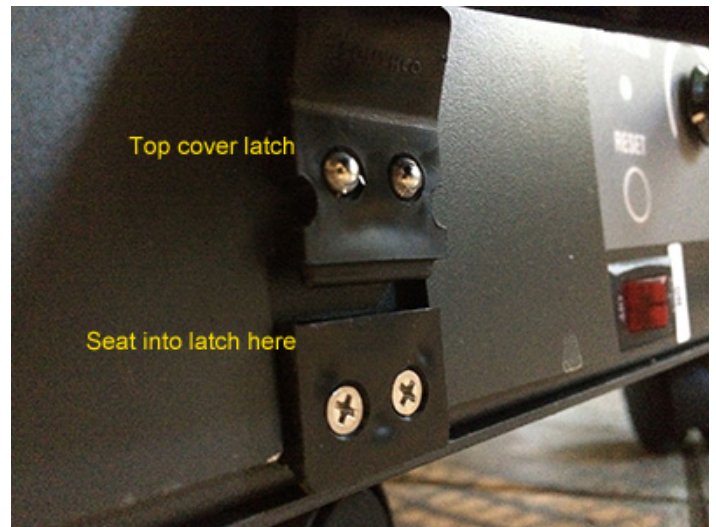
Press and hold the Filter Reset button beneath the flashing light for a few seconds. The light will turn off and the filter counter will reset.

### **Ordering Replacement Filters**

Visit us at [oransi.com](http://oransi.com) or contact our customer service team at 888- 281-3948.

## Troubleshooting

1. Turn the red switch to the Off position.
2. Turn this switch back to On.
3. If this does not fix the issue then the top cover is probably not making proper contact with a safety switch inside the air purifier.
  - a. Remove the 4 clasps near the base and remove the top cover.
  - b. Press in on the safety switch (shown below) with power to the air purifier. The fan should begin to run.
  - c. Re-install the cover as outlined below.





### **Installing the cover**

1. The cover only fits one way. There is a notch in the bottom for the side where the user interface is located.
2. Lower the cover onto the air purifier. When properly seated it will be as shown above.
3. The key to getting the cover to engage with the safety switch is to ensure the cover clasp seats with the clasp of the base of the air purifier on the user interface side. We suggest you lower the cover onto the unit and then lift about one inch. Lower the cover with the long sides pressed in so the cover rests inside the guides along the bottom and ensure it seats with the clasps by the user interface. In lifting the cover up and down you should hear the safety switch click like it's being engaged.
  - a. Press in on the long sides so the white cover rests in the guard rails along the length of the air purifier as shown above. If the cover rests outside the guard rails it may bend somewhat and may not make contact with the safety switch.
  - b. Clasp the latches on the user interface side first. You may need to lift up slightly on the cover and pull back to get both latches to seat as shown below.
  - c. The latch from the top cover must rest into the other part of the latch on the base of the air purifier.
4. Clasp the two latches on the user interface side first. Then clasp the latches on the opposite side. If the latches on the opposite side do not latch, lift the cover slightly (with the user interface side still latched) and re-seat so they can latch properly.



## Warranty.

The Erik Air Purifier carries a 10 year limited warranty. Oransi will replace your air purifier provided the product is determined to be defective as a result faulty material or workmanship while in normal use. Oransi's sole obligation under this warranty is to replace, or at Oransi's discretion, to repair, free of charge, all defective parts. This warranty will be valid only for units in possession of the original purchaser and for 10 years from the original purchase date. Proof of purchase may be required by Oransi's warranty service representative. All parts or units that are replaced become the property of Oransi.

### **10 year warranty remains in effect only if:**

1. The Oransi Air Purifier is operated in accordance with the instructions provided in the Oransi User Manual.
2. The Oransi Air Purifier is connected to a proper power supply (see voltage label on machine).
3. The unit shows no evidence of tampering, mishandling, neglect, accidental damage, modification, and/or repair by anyone other than authorized Oransi service personnel.
4. Ownership of the Air Purifier has never been transferred.
5. Replacement filters are purchased directly from Oransi or an authorized dealer.

## **Legal**

No one is authorized to make any other warranties on behalf of Oransi. It is expressly understood that the replacement warranty of Oransi shall be in lieu of any and all other warranties, express or implied, including warranties of merchantability or fitness for a particular use or purpose, and further that Oransi shall not be liable for any loss or damage directly or indirectly arising from the use of any and all our products, or for any consequential damages arising from such use. Oransi's sole liability with respect to any defect shall be for the replacement of the defective part(s). Some states do not allow such limitations and exclusions, so the above may not apply to you. This warranty gives specific legal rights. You may also have other rights which vary from state to state.

