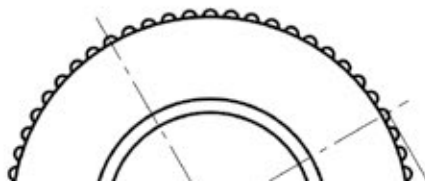
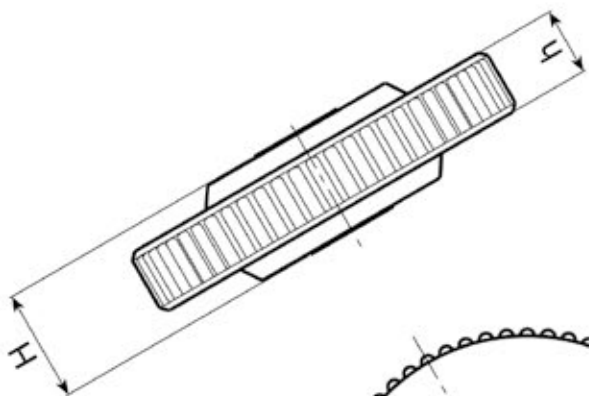
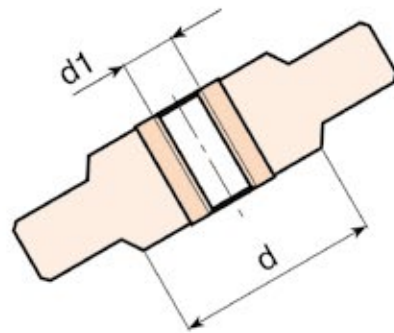




BOTECO[®]

Family Q

WASHERS



Q260



PF

UL94
HB

RoHS
COMPLIANT

DUROPLAST KNURLED WASHER

Material:

Duroplast.
Oils and greases resistant.
High temperatures resistant.

Surface:

Glossy.

Colour:

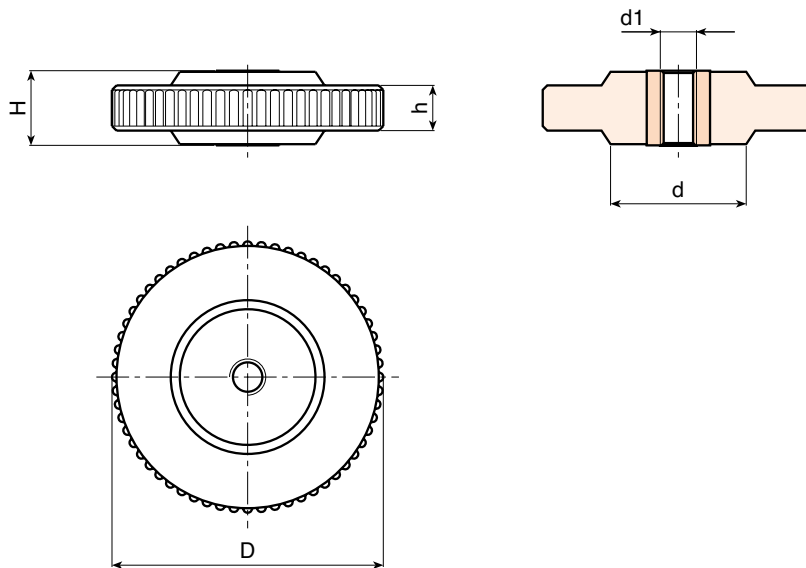
Black (RAL 9011).

Main Insert:

Zinc plated steel bush with right through threaded bore (tolerance 6H).

SPECIAL REQUEST:

- It is possible to supply the inserts in different materials, on request and for quantities.



	art.	D	H	d	h	d1 6H	Δ g
●	Q26045.BM0601P	47	10	-	-	M06	31
●	Q26045.BM0801P	47	10	-	-	M08	32
●	Q26045.BM1001P	47	10	-	-	M10	34
●	Q26045.BM1201P	47	10	-	-	M12	35
●	Q26045.BM1401P	47	10	-	-	M14	38
●	Q26045.BM1601P	47	10	-	-	M16	42
●	Q26060.BM0801P	60	16	30	11	M08	62
●	Q26060.BM1001P	60	16	30	11	M10	65
●	Q26060.BM1201P	60	16	30	11	M12	68
●	Q26060.BM1401P	60	16	30	11	M14	70
●	Q26060.BM1601P	60	16	30	11	M16	73

90% ●

40% ●

5% ●

Q261



LOBED WASHER

Material:

Reinforced polyamide.
Oils and greases resistant.

Surface:

Satin.

Colour:

Black (RAL 9011).

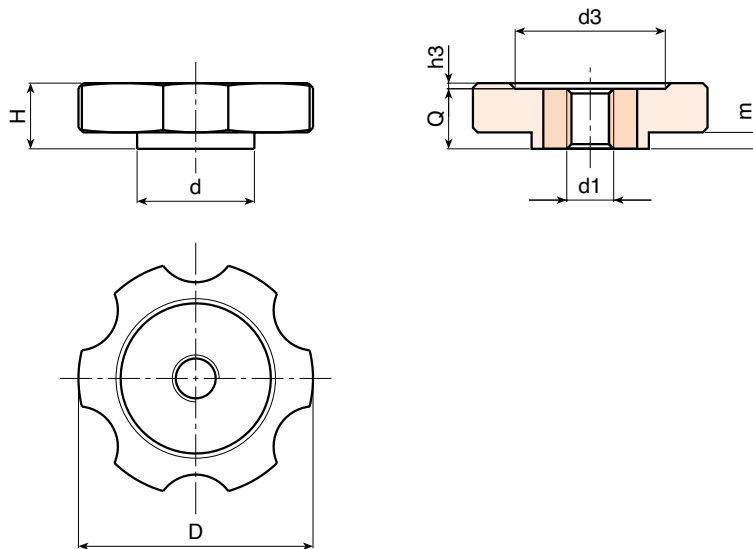
Main Insert:

Zinc plated steel bush with right through threaded bore (tolerance 6H).



SPECIAL REQUEST:

- It is possible to supply the inserts in different materials, on request and for quantities.
- It is possible to supply colours as shown in the table at pag. Q-7, on request and for quantities.



	art.	D	H	d	m	h3	d3	d1 6H	Q	Δ g
●	Q26140.TM0801P	40	12	25	2	1,5	22	M08	11	21
●	Q26140.TM1001P	40	12	25	2	1,5	22	M10	11	22
●	Q26140.TM1201P	40	12	25	2	1,5	22	M12	11	24
●	Q26150.TM0801P	50	14	25	3,5	1,5	32	M08	13	31
●	Q26150.TM1001P	50	14	25	3,5	1,5	32	M10	13	32
●	Q26150.TM1201P	50	14	25	3,5	1,5	32	M12	13	35

Q262



PLASTIC KNURLED WASHER

Material:

Reinforced polyamide.
Oils and greases resistant.

Surface:

Satin.

Colour:

Black (RAL 9011).

Hole:

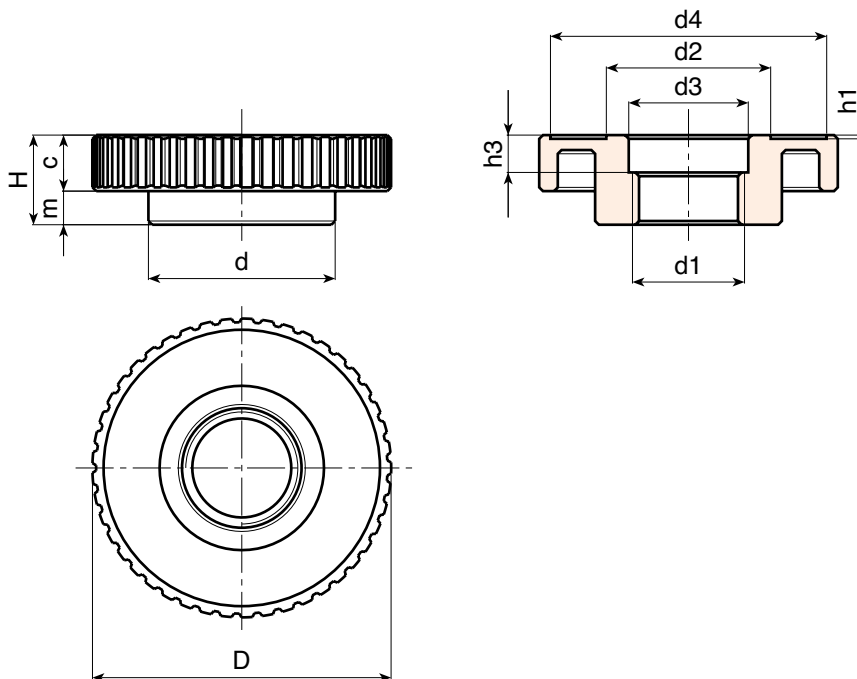
Female threaded right through hole obtained by moulding the plastic. (tolerance in not applicable).

SPECIAL REQUEST:

- It is possible to supply colours as shown in the table at pag. Q-7, on request and for quantities.

SPECIAL REQUEST:

- It's possible to supply the d1 bore by customer design, on request and for quantities.



art.	D	H	d	c	m	h1	h3	d2	d3	d4	d1	Δ g
● Q26280.TB3001P	81	24	50	14,5	9,5	1	10	43,5	32	74	M30x1,5	65

Q263



PLASTIC KNURLED WASHER

Material:

Reinforced polyamide.
Oils and greases resistant.

Surface:

Satin.

Colour:

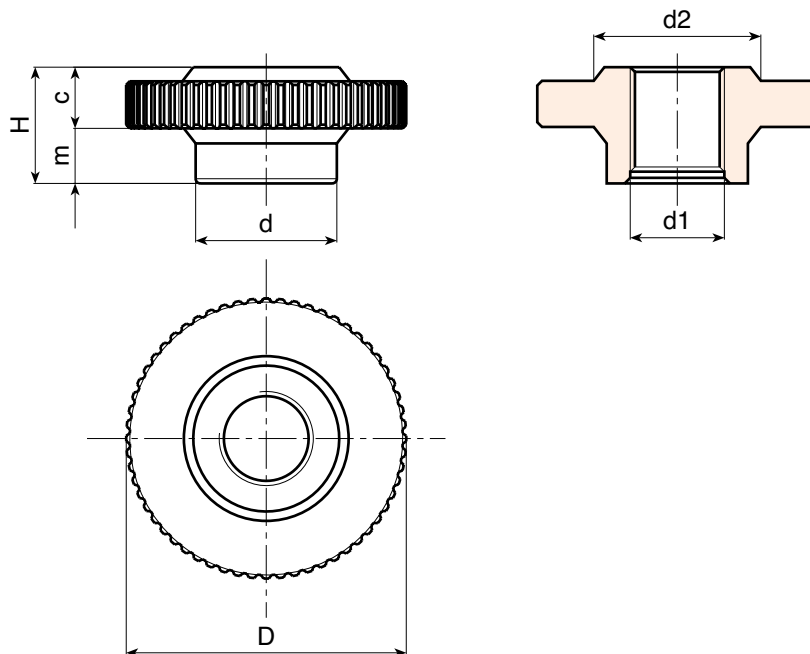
Black (RAL 9011).

Hole:

Female threaded right through hole obtained by moulding the plastic. (tolerance in not applicable).

SPECIAL REQUEST:

- It's possible to supply the d1 bore by customer design, on request and for quantities.



	art.	D	H	d	c	m	d2	d1	Δg
●	Q26360.TM2001P	60	25	30	12	13	35	M20	38
●	Q26360.TM2401P	60	25	30	12	13	35	M24	35

Q264



6 LOBE WASHER

Material:

Reinforced polyamide.
Oils and greases resistant.

Surface:

Satin.

Colour:

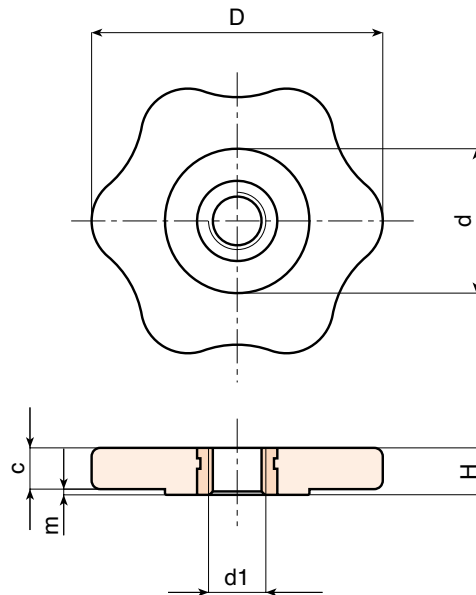
Black (RAL 9011).

Main Insert:

Brass bush with right through threaded bore (tolerance 6H).

SPECIAL REQUEST:












- It is possible to supply the inserts in different materials, on request and for quantities.
- It is possible to supply colours as shown in the table at pag. Q-7, on request and for quantities.



	art.	D	H	d	c	m	d1 6H	Δ g
●	Q26450.TM0601P	50	8	25	7	1	M06	18
●	Q26450.TM0801P	50	8	25	7	1	M08	18
●	Q26450.TM1001P	50	8	25	7	1	M10	20

COLOUR CHART

RAL COLOURS CODING

Colour		RAL	Cod.
Black		9011	01
Orange		2004	02
Orange		2011	03
White		9010	04
Blue		5015	07
Yellow		1007	09
Yellow		1021	10
Grey		7024	12
Grey		7035	13
Red		3000	16
Green		6024	17

AUTHORISED RESELLER

BOTECO Srl

www.boteco.it

36010 ZANE' (VI) - ITALY

Via L. Pettinà 16 (side street of Via Cuso)

Switchboard Tel.:+39-0445-316411 - Fax:+39-0445-316400

Sales Fax:+39-0445-316401 mail: commerciale@boteco.it

Administration Fax:+39-0445-316402 mail: amministrazione@boteco.it

Technical Fax:+39-0445-316404 mail: tecnico@boteco.it

Certified Mail Box: boteco@pec.botecopec.it

