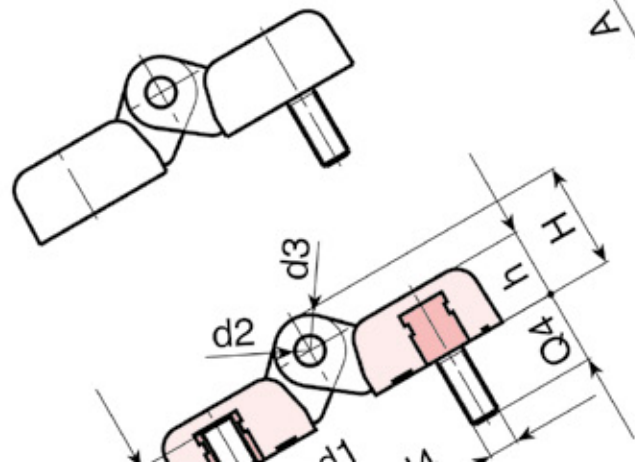
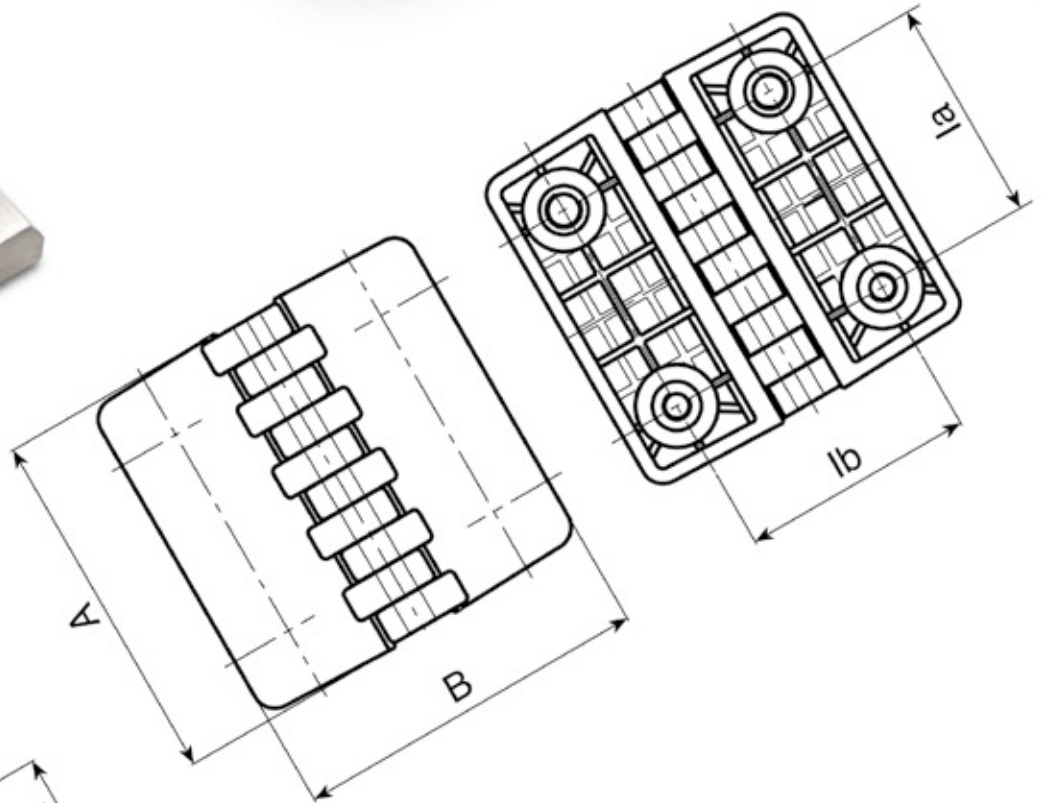
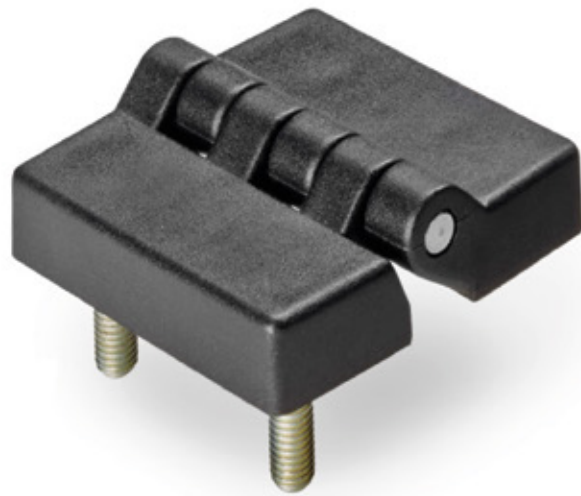




**BOTECO<sup>®</sup>**

**Family O**

**HINGES**



# O460



## HINGE WITH ADJUSTABLE FRICTION AND THROUGH HOLE

**Material:**  
Reinforced polyamide.  
Resistant to oils and greases.

**Surface finish:**  
Satin.

**Colour:**  
Black (RAL 9011).

**Inserts:**  
(4) Galvanised steel pin.  
(1) Stainless steel (Aisi 304) friction adjusting screw.  
(2) Stainless steel nut for adjusting screw (Aisi 304).  
(3) Pivot pin cap in PA6.

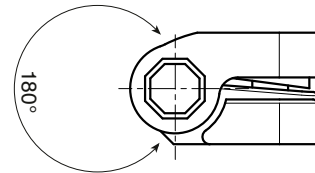
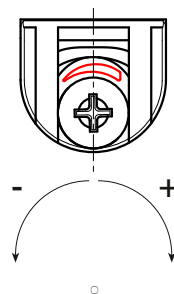
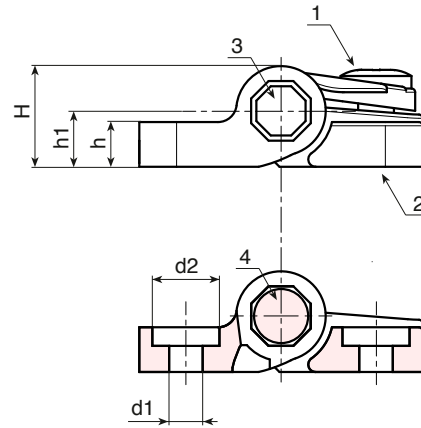
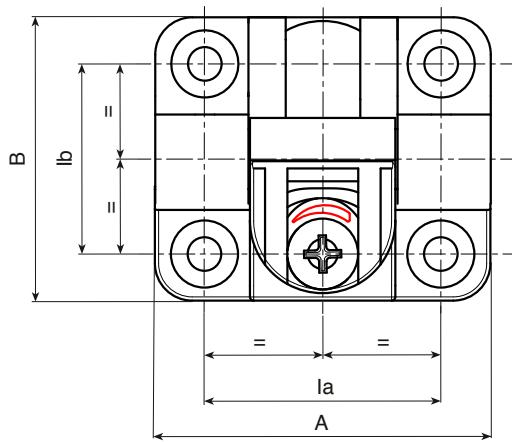
**Hole:**  
Through hole obtained by moulding the plastic for fixing screw M6.

**To adjust the friction:**  
Using a screw driver to turn the adjusting screw (1), the friction can be set to a maximum of:  
O460032: 0.8 Nm.  
O460047: 4 Nm.



### SPECIAL REQUEST:

- None.



art.	la	lb	A	B	H	h	h1	d2	d1	g	F1 (N)	F2 (N)
O46032.TG04.501	32	25,5	45	38	13,5	6	7,5	9	4,5 (M04)	17	700	1.400
O46047.TG06.501	47,5	38	63,5	58	18,5	8,5	11,5	12,5	6,5 (M06)	47	1.500	2.250

# O470



## DETENT HINGE WITH PRESET POSITIONS AND HOLE COVER CAP

### Material:

Reinforced polyamide. Resistant to oils and greases.

**Surface finish:**  
Satin.

**Colour:**  
Black (RAL 9011).

### Inserts:

Stainless steel thrust and lock springs (Aisi 302).

(1) Pin cap in black PA6.

(2) Hole cover cap in black PA6.

### Hole:

Through hole obtained by moulding the plastic, for screw M05.

### Pivot pin:

Pivot pin in reinforced PA6 polyamide.

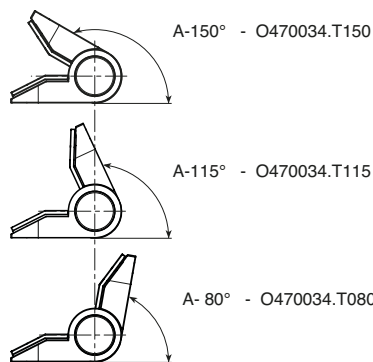
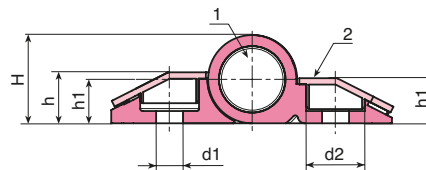
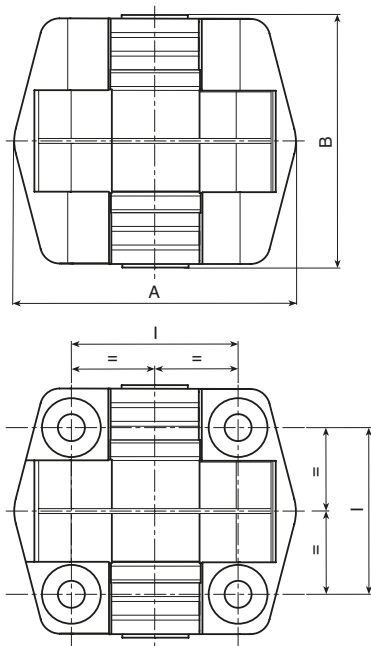
### Preset positions:

The springs that act on the pivot pin have three torque calibrations: 0.7 Nm, 1.1 Nm and 1.7 Nm. The detent positions are: 80° - 115° - 150°.

**ATTENTION:** a version of the hinge without springs with free movement to 180° is also available (code O470034.TG5.501).

### SPECIAL REQUESTS:

- None.



art.	l	A°	Nm	A	B	H	h	h1	d1	d2	g
0470034.TG5.501	34	-	-	51	57	18	10	9	5,5	10,5	43
O470034.T080G5.501N0.7	34	80°	0,7	51	57	18	10	9	5,5	10,5	43
O470034.T080G5.501N1.1	34	80°	1,1	51	57	18	10	9	5,5	10,5	43
O470034.T080G5.501N1.7	34	80°	1,7	51	57	18	10	9	5,5	10,5	43
O470034.T115G5.501N0.7	34	115°	0,7	51	57	18	10	9	5,5	10,5	43
O470034.T115G5.501N1.1	34	115°	1,1	51	57	18	10	9	5,5	10,5	43
O470034.T115G5.501N1.7	34	115°	1,7	51	57	18	10	9	5,5	10,5	43
O470034.T150G5.501N0.7	34	150°	0,7	51	57	18	10	9	5,5	10,5	43
O470034.T150G5.501N1.1	34	150°	1,1	51	57	18	10	9	5,5	10,5	43
O470034.T150G5.501N1.7	34	150°	1,7	51	57	18	10	9	5,5	10,5	43

# O400



## HINGE WITH PLASTIC RIGHT THROUGH HOLES

**Material:**  
Reinforced polyamide.  
Oils and greases resistant.

**Surface:**  
Satin.

**Colour:**  
Black (RAL 9011).

**Insert:**  
Zinc plated steel pin.

**Hole:**  
**version TS:**  
Right through smooth hole obtained by moulding the plastic. Seat for countersunk screws DIN 7991 or UNI 5993.

**version TC:**  
Right through smooth hole obtained by moulding the plastic. Seat for cylindrical head screw DIN 912 or UNI 5931.

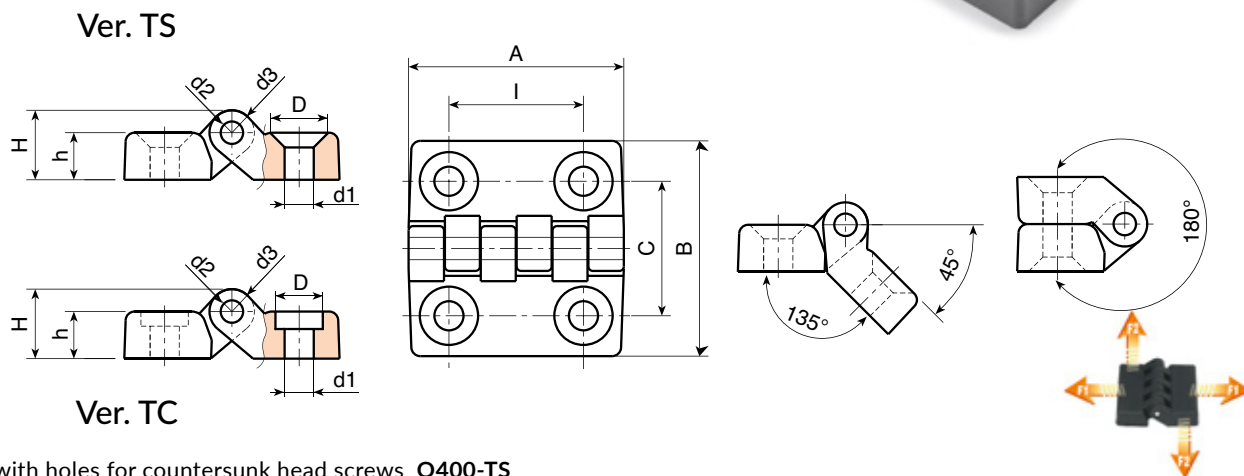
### SPECIAL REQUEST:

- It is possible to supply colours as shown in the table at pag. O-29, on request and for quantities.

ver. TS



ver. TC



Version with holes for countersunk head screws **O400-TS**

art.	I	C	A	B	h	H	d	d2	d3	d1	$\Delta_g$	F1 (N)	F2 (N)
<b>O40020.TG04,501TS</b>	20	20	32	32	7	10,5	8	3	7	4,5	9	1440	490
<b>O40030.TG05,501TS</b>	30	30	48	48	10,5	15,5	13	5	10	5,5	27	1960	1470
<b>O40030.TG06,501TS</b>	30	30	48	48	10,5	15,5	13	5	10	6,5	27	1960	1470
<b>O40040.TG06,501TS</b>	40	40	64	64	13	19	13	5	12	6,5	53	2850	1520
<b>O40060.TG08,501TS</b>	60	63	96	96	16	24	16	8	16	8,5	152	4300	1810
<b>O40060.TG10,501TS</b>	60	63	96	96	16	24	20	8	16	10,5	152	4300	1810

Version with holes for cylindrical-head screws with hexagon **O400-TC**

art.	I	C	A	B	h	H	d	d2	d3	d1	$\Delta_g$	F1 (N)	F2 (N)
<b>O40020.TG04,501TC</b>	20	20	32	32	7	10,5	8	3	7	4,5	9	1440	490
<b>O40030.TG05,501TC</b>	30	30	48	48	10,5	15,5	13	5	10	5,5	27	1960	1470
<b>O40030.TG06,501TC</b>	30	30	48	48	10,5	15,5	13	5	10	6,5	27	1960	1470
<b>O40040.TG06,501TC</b>	40	40	64	64	13	19	13	5	12	6,5	53	2850	1520
<b>O40060.TG08,501TC</b>	60	63	96	96	16	24	16	8	16	8,5	152	4300	1810
<b>O40060.TG10,501TC</b>	60	63	96	96	16	24	20	8	16	10,5	152	4300	1810

# O400CIN



## INOX

### HINGE WITH PLASTIC RIGHT THROUGH HOLES AND STAINLESS STEEL PIN

**Material:**  
Reinforced polyamide.  
Oils and greases resistant.

**Surface:**  
Satin.

**Colour:**  
Black (RAL 9011).

**Insert:**  
Stainless steel pin (AISI 303).

**Hole:**  
**version TS:**  
Right through smooth hole obtained by moulding the plastic. Seat for countersunk screws DIN 7991 or UNI 5993.

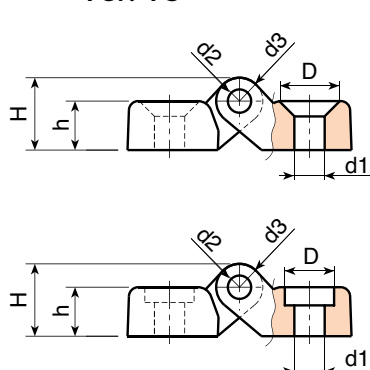
**version TC:**  
Right through smooth hole obtained by moulding the plastic. Seat for cylindrical head screw DIN 912 or UNI 5931.



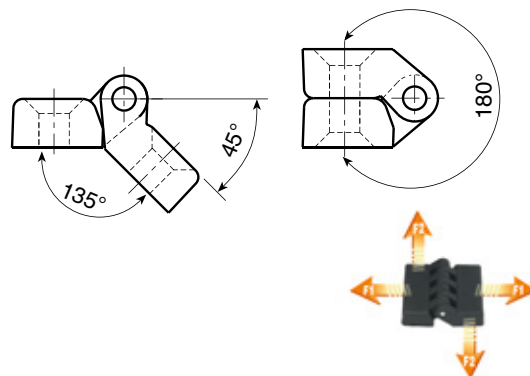
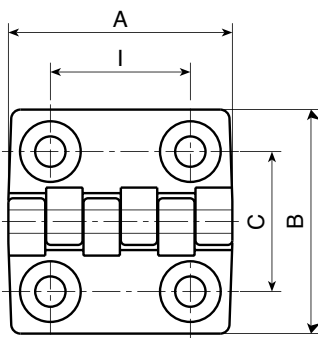
#### SPECIAL REQUEST:

- It is possible to supply colours as shown in the table at pag. O-29, on request and for quantities.

#### Ver. TS



#### Ver. TC



#### Version with holes for countersunk head screws O400CIN-TS

art.	I	C	A	B	h	H	d	d2	d3	d1	$\Delta_g$	F1 (N)	F2 (N)
O40020.TG04,501TSCIN	20	20	32	32	7	10,5	8	3	7	4,5	9	1440	490
O40030.TG05,501TSCIN	30	30	48	48	10,5	15,5	13	5	10	5,5	27	1960	1470
O40030.TG06,501TSCIN	30	30	48	48	10,5	15,5	13	5	10	6,5	27	1960	1470
O40040.TG06,501TSCIN	40	40	64	64	13	19	13	5	12	6,5	53	2850	1520
O40060.TG08,501TSCIN	60	63	96	96	16	24	16	8	16	8,5	152	4300	1810
O40060.TG10,501TSCIN	60	63	96	96	16	24	20	8	16	10,5	152	4300	1810

#### Version with holes for cylindrical-head screws with hexagon O400CIN-TC

art.	I	C	A	B	h	H	d	d2	d3	d1	$\Delta_g$	F1 (N)	F2 (N)
O40020.TG04,501TCCIN	20	20	32	32	7	10,5	8	3	7	4,5	9	1440	490
O40030.TG05,501TCCIN	30	30	48	48	10,5	15,5	13	5	10	5,5	27	1960	1470
O40030.TG06,501TCCIN	30	30	48	48	10,5	15,5	13	5	10	6,5	27	1960	1470
O40040.TG06,501TCCIN	40	40	64	64	13	19	13	5	12	6,5	53	2850	1520
O40060.TG08,501TCCIN	60	63	96	96	16	24	16	8	16	8,5	152	4300	1810
O40060.TG10,501TCCIN	60	63	96	96	16	24	20	8	16	10,5	152	4300	1810

Presumable presence in the stock in %  
90% 40% 5%



# O430



## FLAT HINGE WITH THREADED FEMALE INSERTS

### Material:

Reinforced polyamide.  
Oils and greases resistant.

### Surface:

Satin.

### Colour:

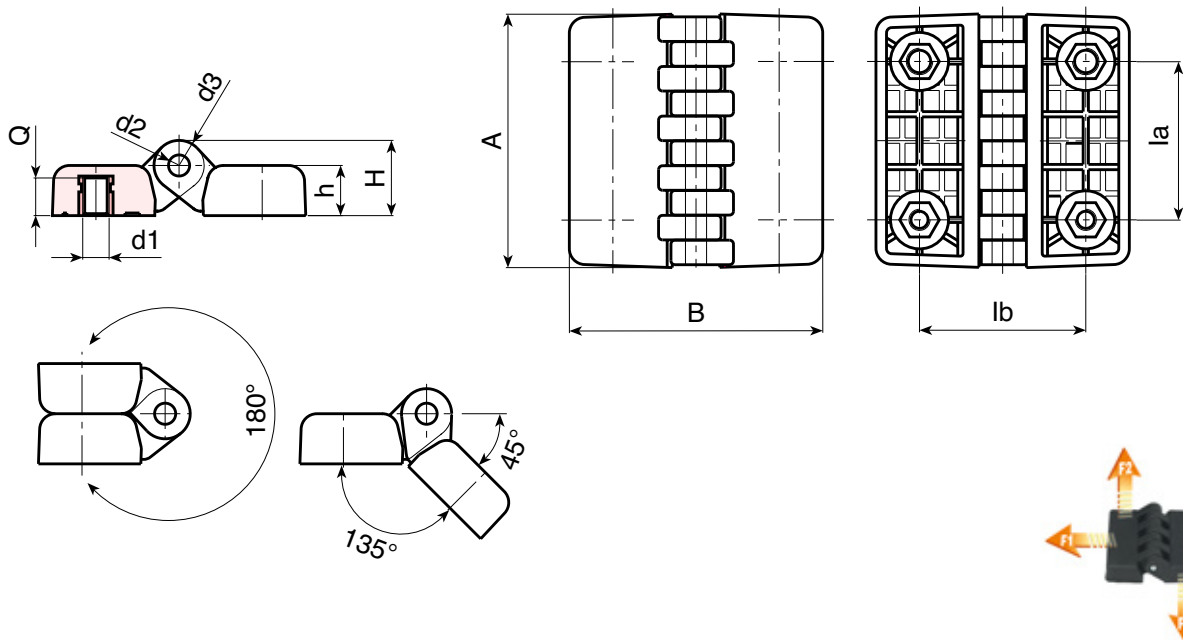
Black (RAL 9011).

### Inserts:

- Zinc plated steel pin.
- Brass blind threaded bush (tolerance 6H).

### SPECIAL REQUESTS:

- It is possible to supply inserts in different materials, on request and for quantities.
- It is possible to supply colours as shown in the table on page O-29, on request and for quantities.



	art.	la	lb	A	B	h	H	d2	d3	d1 6H	Q	$\Delta$ g	F1 (N)	F2 (N)
●	O43030.TM0501	30	30	48	48	10,5	15,5	5	10	M05	7	35	2000	1370
●	O43030.TM0601	30	30	48	48	10,5	15,5	5	10	M06	7	35	2000	1370
●	O43040.TM0601	40	40	64	64	13	19	5	12	M06	9	67	4100	1800
●	O43040.TM0801	40	40	64	64	13	19	5	12	M08	9	65	4100	1800
●	O43060.TM0801	60	63	95	95	19	28,5	8	18	M08	13	226	2450	2650
●	O43060.TM1001	60	63	95	95	19	28,5	8	18	M10	13	228	2450	2650

# O431



## FLAT HINGE WITH THREADED STUDS

### Material:

Reinforced polyamide.  
Oils and greases resistant.

### Surface:

Satin.

### Colour:

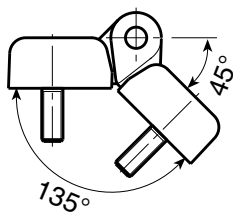
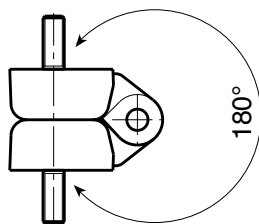
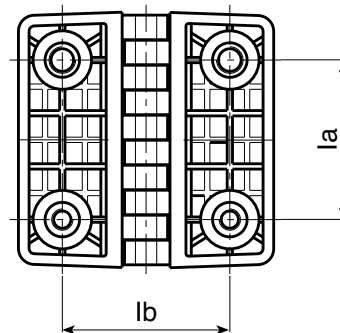
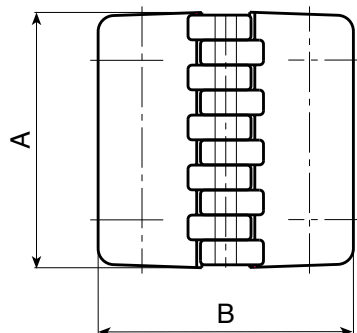
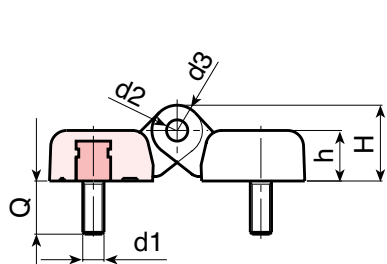
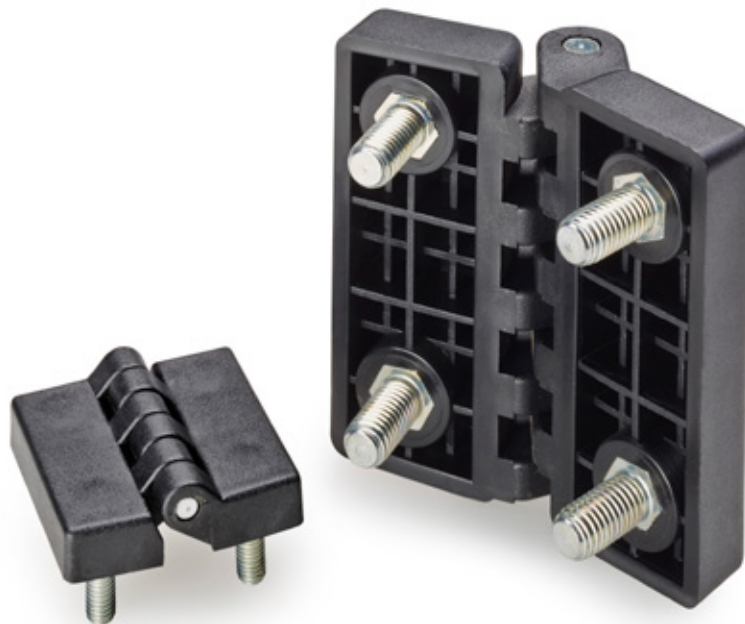
Black (RAL 9011).

### Inserts:

- Zinc plated steel pin.
- Zinc plated steel threaded stud (tolerance 6g).

### SPECIAL REQUESTS:

- It is possible to supply inserts in different materials, on request and for quantities.
- It is possible to supply colours as shown in the table on page O-29, on request and for quantities.



	art.	la	lb	A	B	h	H	d2	d3	d1 6g	Q	Δ g	F1 (N)	F2 (N)
●	O43130.TM05X1501	30	30	48	48	10,5	15,5	5	10	M05	15	49	1780	1370
●	O43130.TM06X1501	30	30	48	48	10,5	15,5	5	10	M06	15	52	1780	1370
●	O43140.TM06X2001	40	40	64	64	13	19	5	12	M06	20	90	4120	1760
●	O43140.TM08X2001	40	40	64	64	13	19	5	12	M08	20	100	4120	1760
●	O43160.TM08X2001	60	63	95	95	19	28,5	8	18	M08	20	260	4900	1275
●	O43160.TM10X2001	60	63	95	95	19	28,5	8	18	M10	20	278	4900	1275

# O432



## FLAT HINGE WITH THREADED FEMALE AND MALE INSERTS

### Material:

Reinforced polyamide.  
Oils and greases resistant.

### Surface:

Satin.

### Colour:

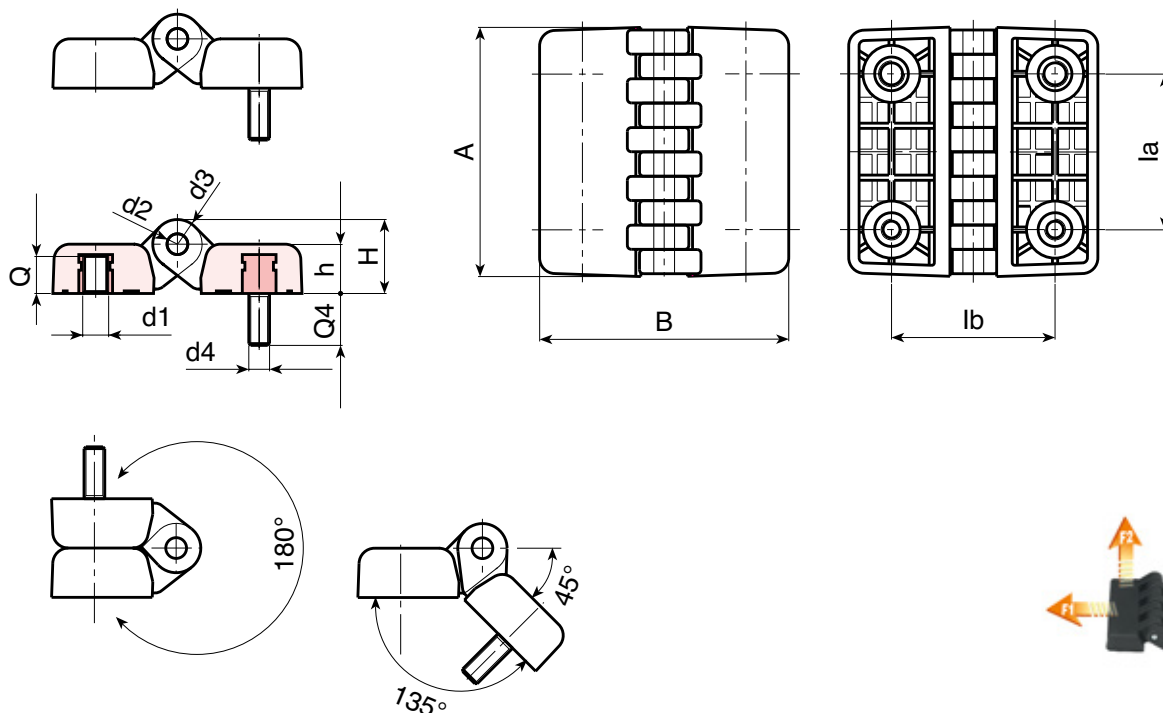
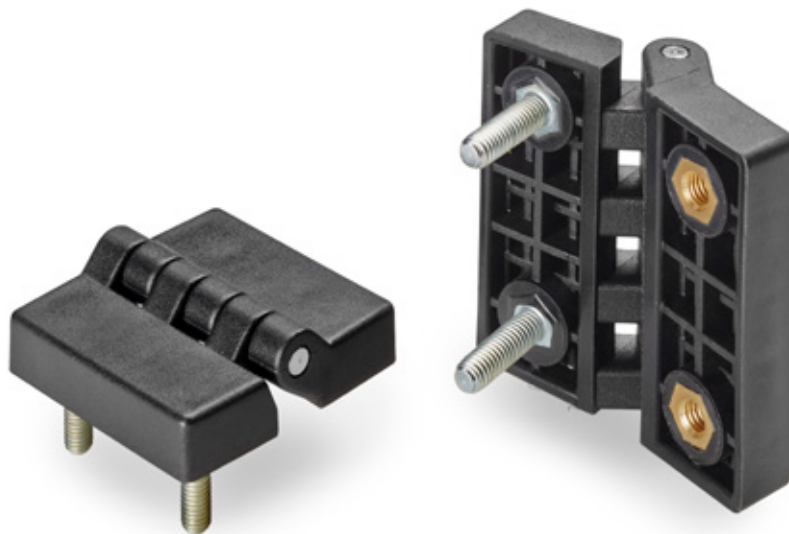
Black (RAL 9011).

### Inserts:

- Zinc plated steel pin.
- Brass blind threaded bush (tolerance 6H).
- Zinc plated steel threaded stud (tolerance 6g).

### SPECIAL REQUESTS:

- It is possible to supply inserts in different materials, on request and for quantities.
- It is possible to supply colours as shown in the table on page O-29, on request and for quantities.



	art.	la	lb	A	B	h	H	d2	d3	d1-d4	Q	Q4	$\Delta_g$	F1 (N)	F2 (N)
●	O43230.TM0501	30	30	48	48	10,5	15,5	5	10	M05	7	15	40	1850	1350
●	O43230.TM0601	30	30	48	48	10,5	15,5	5	10	M06	7	15	41	1850	1350
●	O43240.TM0601	40	40	64	64	13	19	5	12	M06	9	20	73	4000	1600
●	O43240.TM0801	40	40	64	64	13	19	5	12	M08	9	20	85	4000	1600
●	O43260.TM0801	60	63	95	95	19	28,5	8	18	M08	13	20	240	3100	1400
●	O43260.TM1001	60	63	95	95	19	28,5	8	18	M10	13	20	250	3100	1400



# O433



## FLAT HINGE WITH THREADED FEMALE INSERTS AND RIGHT THROUGH PLASTIC HOLES

**Material:**  
Reinforced polyamide.  
Oils and greases resistant.

**Surface:**  
Satin.

**Colour:**  
Black (RAL 9011).

**Inserts:**

- Zinc plated steel pin.
- Brass blind threaded bush (tolerance 6H).

**Hole:**  
**version TS:**  
Right through smooth hole obtained by moulding the plastic. Seat for countersunk screws DIN 7991 or UNI 5993.

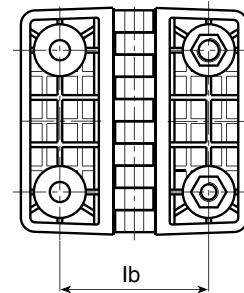
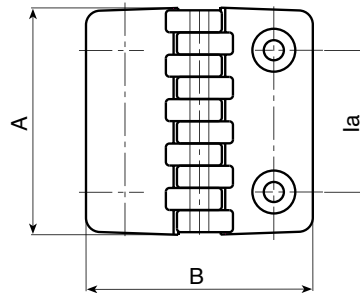
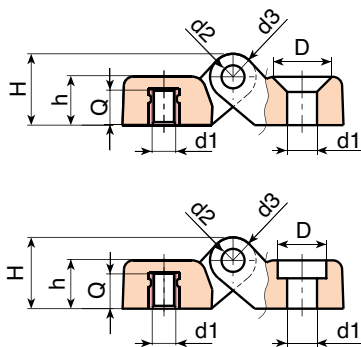
**version TC:**  
Right through smooth hole obtained by moulding the plastic. Seat for cylindrical head screw DIN 912 or UNI 5931.



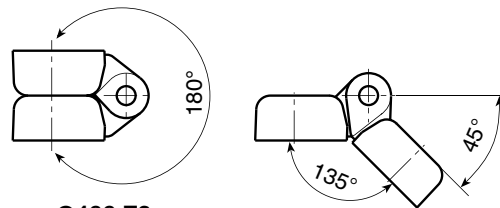
### SPECIAL REQUESTS:

- It is possible to supply inserts in different materials, on request and for quantities.
- It is possible to supply colours as shown in the table on page O-29, on request and for quantities.

### Ver. TS



### Ver. TC



### Version with holes for countersunk head screws O433-TS

art.	la	lb	A	B	h	H	d2	d3	d1	Q	g	F1 (N)	F2 (N)
● O43330.TM0601TS	30	30	48	48	10,5	15,5	5	10	M06 / 6,5	7	31	2000	1450
● O43340.TM0601TS	40	40	64	64	13	19	5	12	M06 / 6,5	9	60	3500	1650

### Version with holes for cylindrical-head screws with hexagon O433-TC

art.	la	lb	A	B	h	H	d2	d3	d1	Q	g	F1 (N)	F2 (N)
● O43330.TM0601TC	30	30	48	48	10,5	15,5	5	10	M06 / 6,5	7	31	2000	1450
● O43340.TM0601TC	40	40	64	64	13	19	5	12	M06 / 6,5	9	60	3500	1650

# O434



## FLAT HINGE WITH THREADED STUD AND RIGHT THROUGH PLASTIC HOLES

**Material:**  
Reinforced polyamide.  
Oils and greases resistant.

**Surface:**  
Satin.

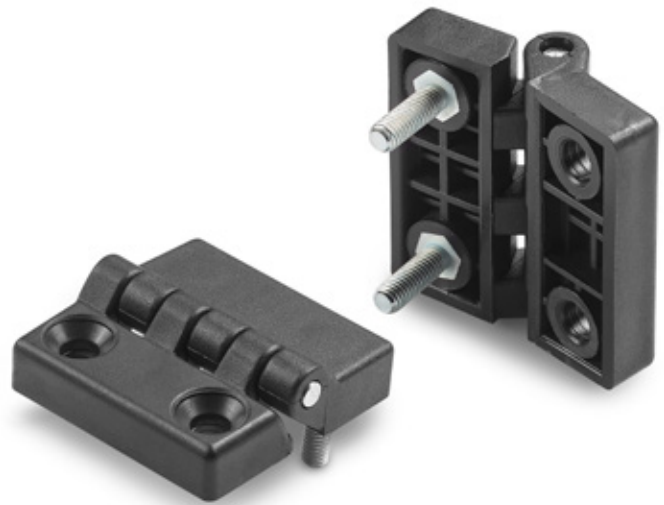
**Colour:**  
Black (RAL 9011).

**Inserts:**

- Zinc plated steel pin.
- Zinc plated steel threaded stud (tolerance 6g).

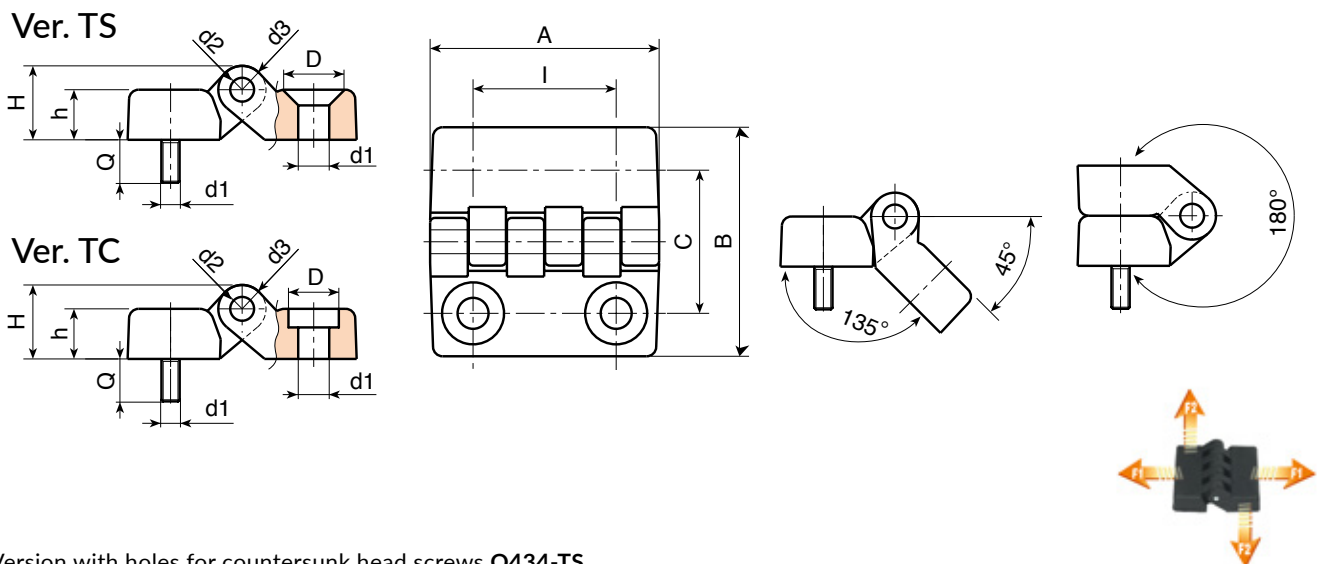
**Hole:**  
**version TS:**  
Right through smooth hole obtained by moulding the plastic. Seat for countersunk screws DIN 7991 or UNI 5993.

**version TC:**  
Right through smooth hole obtained by moulding the plastic. Seat for cylindrical head screw DIN 912 or UNI 5931.



### SPECIAL REQUESTS:

- It is possible to supply inserts in different materials, on request and for quantities.
- It is possible to supply colours as shown in the table on page O-29, on request and for quantities.



Version with holes for countersunk head screws **O434-TS**

art.	la	lb	A	B	h	H	d2	d3	d1	Q	g	F1 (N)	F2 (N)
● <b>O43430.TM0601TS</b>	30	30	48	48	10,5	15,5	5	10	<b>M06 / 6,5</b>	15	38	2000	1450
● <b>O43440.TM0601TS</b>	40	40	64	64	13	19	5	12	<b>M06 / 6,5</b>	20	68	3500	1650

Version with holes for cylindrical-head screws with hexagon **O434-TC**

art.	la	lb	A	B	h	H	d2	d3	d1	Q	g	F1 (N)	F2 (N)
● <b>O43430.TM0601TC</b>	30	30	48	48	10,5	15,5	5	10	<b>M06 / 6,5</b>	15	38	2000	1450
● <b>O43440.TM0601TC</b>	40	40	64	64	13	19	5	12	<b>M06 / 6,5</b>	20	68	3500	1650

# O402



## FLAT HINGE WITH LOWERED ROTATION PIN AND RIGHT THROUGH PLASTIC HOLES

**Material:**  
Reinforced polyamide.  
Oils and greases resistant.

**Surface:**  
Satin.

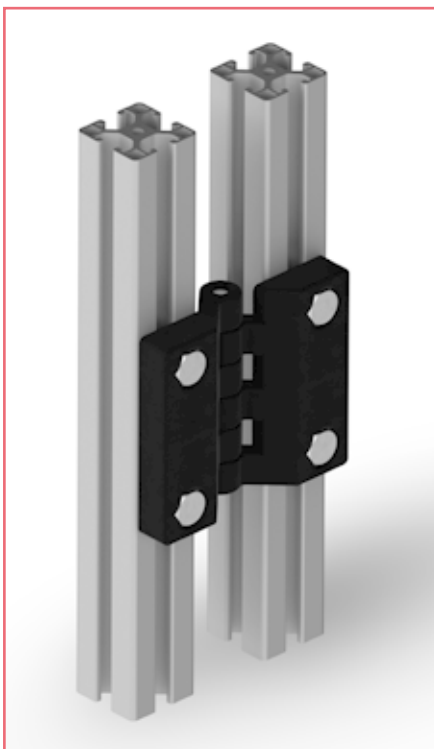
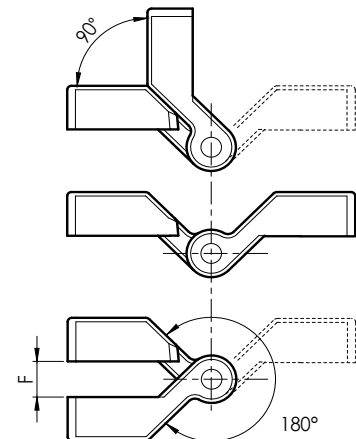
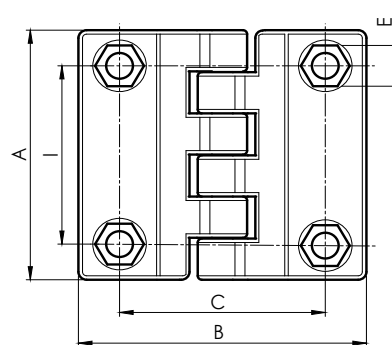
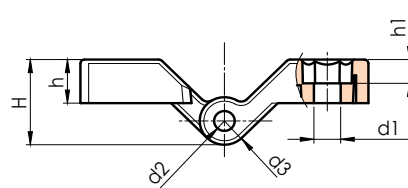
**Colour:**  
Black (RAL 9011)..

**Inserts:**  
Zinc plated steel pin.

**Hole:**  
**version TS:**  
Right through smooth hole obtained by moulding the plastic. Seat for hexagonal head screws UNI 5727.

### SPECIAL REQUESTS:

- It is possible to supply colours as shown in the table on page O-29, on request and for quantities.



art.	I	C	A	B	E	F	h	h1	H	d2	d3	d1	g
O402045.TG06.501	45	50	63	70	10	9	11	6	21,5	5	12	6,5	45

# O410



## SHIM FOR O400-30 HINGE

**Material:**

Reinforced polyamide.  
Oils and greases resistant.

**Surface:**

Satin.

**Colour:**

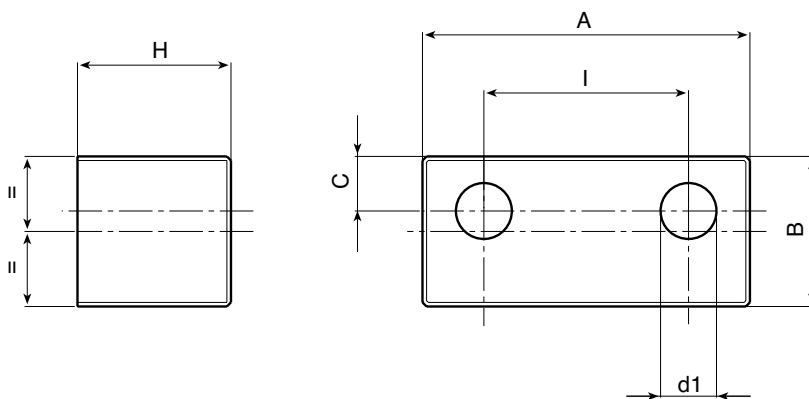
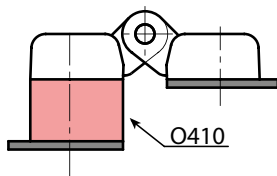
Black (RAL 9011).

**Hole:**

Right through smooth hole obtained by moulding the plastic.

**SPECIAL REQUESTS:**

- It is possible to supply colours as shown in the table on page O-29, on request and for quantities.



	art.	I	C	A	B	H	d1	g
●	O41030.TG08,501	30	8	48	22	22,5	8,5	19

# O411



## SHIM FOR O400-40 HINGE

**Material:**

Reinforced polyamide.  
Oils and greases resistant.

**Surface:**

Satin.

**Colour:**

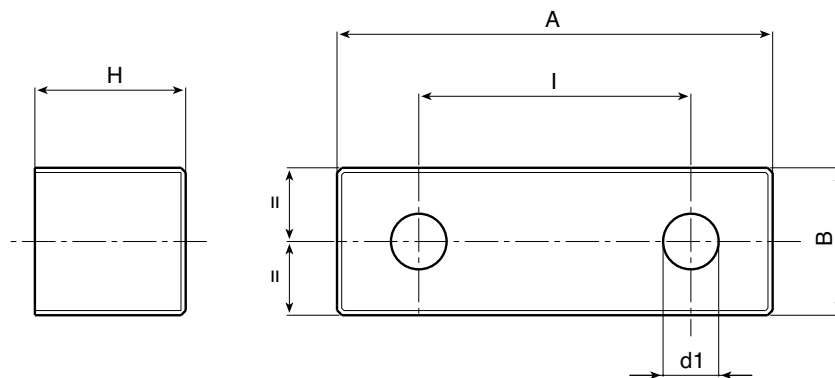
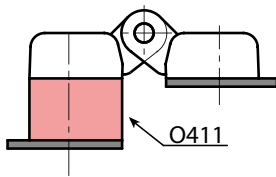
Black (RAL 9011).

**Hole:**

Right through smooth hole obtained by moulding the plastic.

**SPECIAL REQUESTS:**

- It is possible to supply colours as shown in the table on page O-29, on request and for quantities.



	art.	I	A	B	H	d1	g
●	O41140.TG08,501	40	65	22	22,5	8,5	24



# O450



## UNIVERSAL HINGE WITH FEMALE THREADED INSERT FOR MOUNTING ON STRAIGHT DOOR

**Material:**  
Reinforced polyamide.  
Oils and greases resistant.

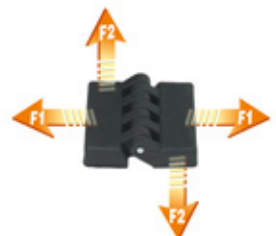
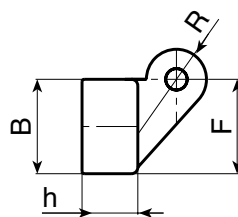
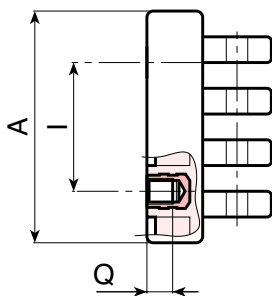
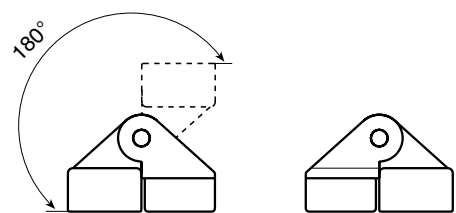
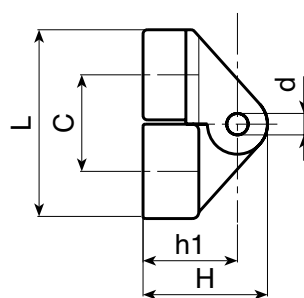
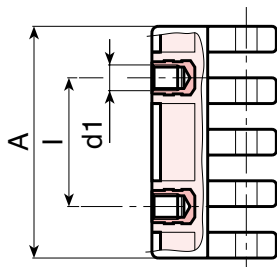
**Surface:**  
Satin.

**Colour:**  
Black (RAL 9011).

- Inserts:**
- Zinc plated steel pin.
  - Brass blind threaded bush (tolerance 6H).
  - (\*) Zinc plated steel blind threaded bush. (tolerance 6H)

**SPECIAL REQUESTS:**

- None.



art.	I	C	A	B	L	F	h	h1	H	d	R	d1 6H	Q	g	F1 (N)	F2 (N)
● <b>O45030.TM0501</b>	15	18	30	17	35	18	11	19	25	4	11	<b>M5</b>	8	26	1180	1130
● <b>O45054.TM0601</b>	30	22	54	21	44	22	13	22	30	5	15	<b>M6</b>	7	58	1520	2980
● <b>O45078.TM0801</b>	42	32	78	30	61	30	18	31	42	8	21	<b>(*) M8</b>	10	178	885	2875

# O452



## UNIVERSAL HINGE WITH FEMALE THREADED INSERT FOR MOUNTING ON ANGULAR DOOR

### Material:

Reinforced polyamide.  
Oils and greases resistant.

### Surface:

Satin.

### Colour:

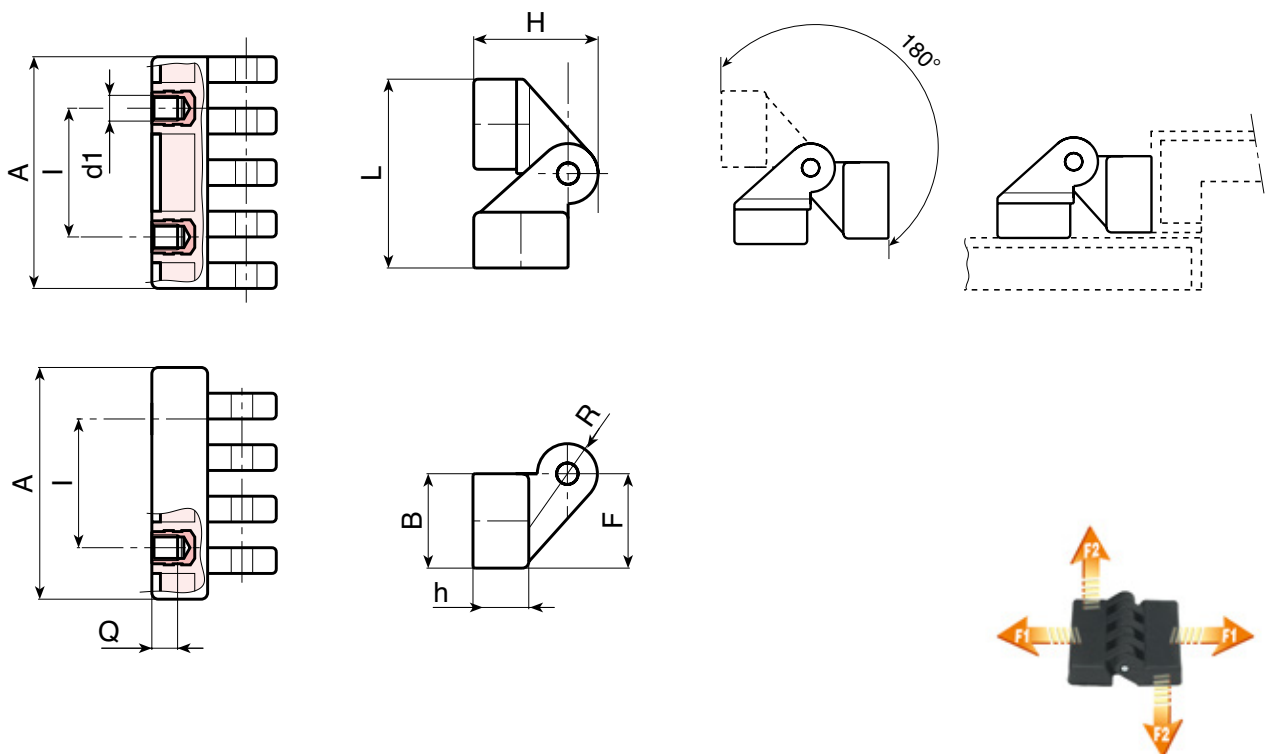
Black (RAL 9011).

### Inserts:

- Zinc plated steel pin.
- Brass blind threaded bush (tolerance 6H).
- (\*) Zinc plated steel blind threaded bush. (tolerance 6H)

### SPECIAL REQUESTS:

- None.



art.	I	C	A	B	L	F	h	h1	H	d	R	d1 6H	Q	g	F1 (N)	F2 (N)
● O45230.TM0501	15	18	30	17	36	18	11	19	25	4	11	M05	8	26	1180	1130
● O45254.TM0601	30	22	54	21	44	22	13	22	30	5	15	M06	7	58	1520	2980
● O45278.TM0801	42	32	78	30	62	30	18	31	42	8	21	(*) M08	10	178	885	2875

# O451



## UNIVERSAL HINGE WITH THREADED STUD FOR MOUNTING ON STRAIGHT DOOR

**Material:**  
Reinforced polyamide.  
Oils and greases resistant.

**Surface:**  
Satin.

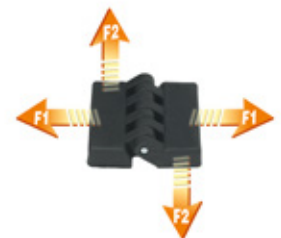
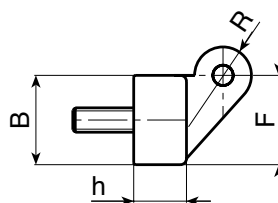
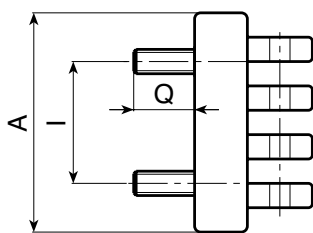
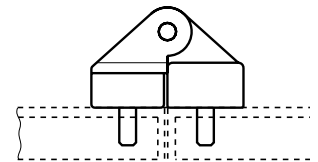
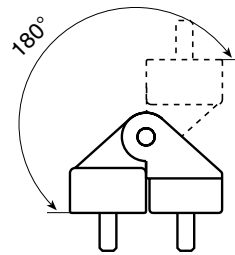
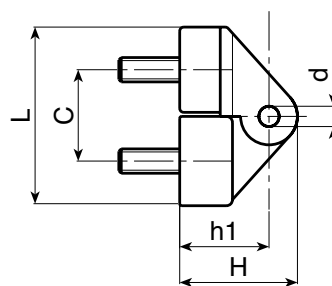
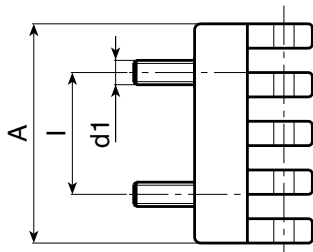
**Colour:**  
Black (RAL 9011).

**Inserts:**

- Zinc plated steel pin.
- Zinc plated steel threaded stud (tolerance 6g).

**SPECIAL REQUESTS:**

- None.



art.	I	C	A	B	L	F	h	h1	H	d	R	d1 6g	Q	g	F1 (N)	F2 (N)
● <b>O45130.TM05X1001</b>	<b>15</b>	18	30	17	35	18	11	19	25	4	11	<b>M05</b>	10	38	690	1080
● <b>O45154.TM06X1501</b>	<b>30</b>	22	54	21	44	22	13	22	30	5	15	<b>M06</b>	15	72	295	1670
● <b>O45178.TM08X2001</b>	<b>42</b>	32	78	30	61	30	18	31	42	8	21	<b>M08</b>	20	190	1025	2830

# O453



## UNIVERSAL HINGE WITH THREADED STUD FOR MOUNTING ON ANGULAR DOOR

**Material:**  
Reinforced polyamide.  
Oils and greases resistant.

**Surface:**  
Satin.

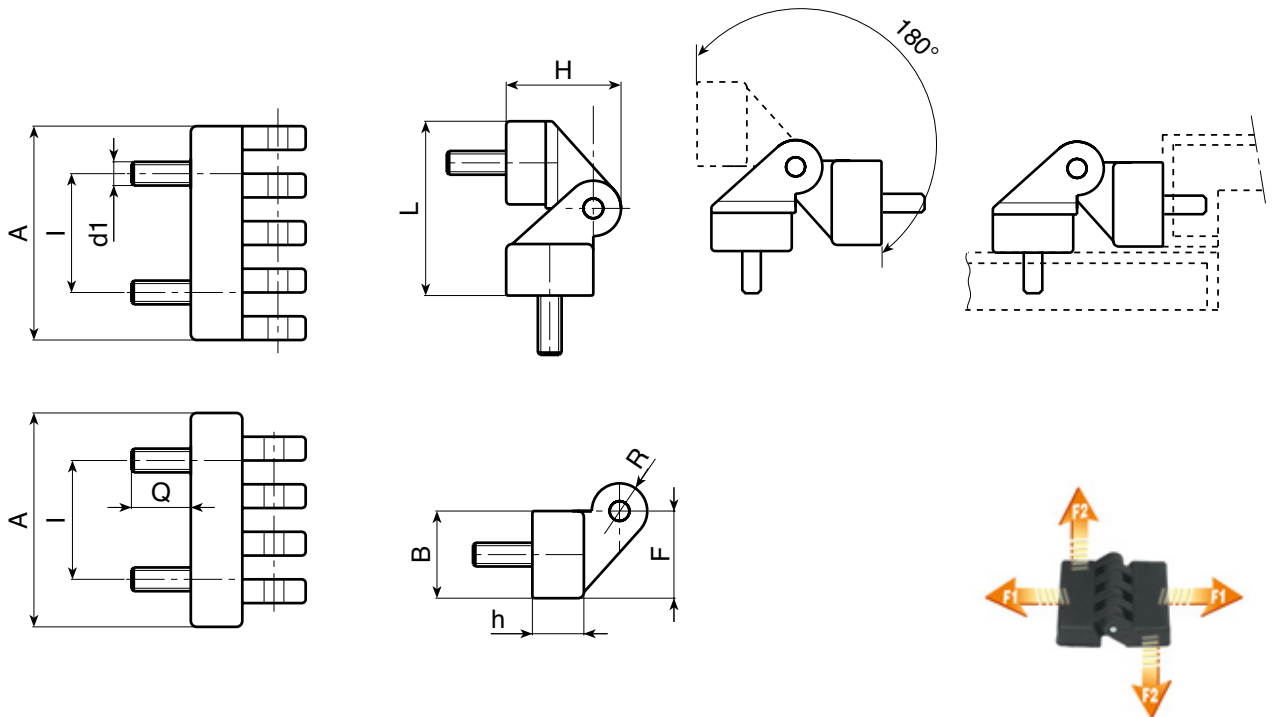
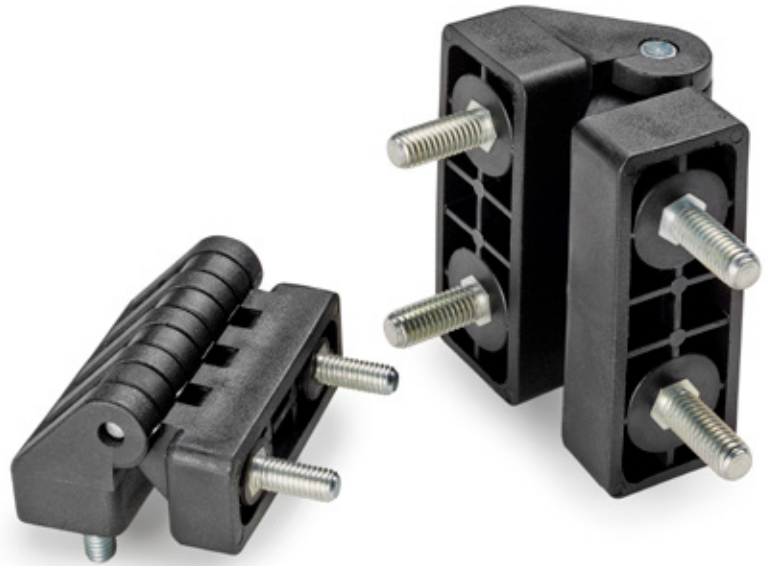
**Colour:**  
Black (RAL 9011).

**Inserts:**

- Zinc plated steel pin.
- Zinc plated steel threaded stud (tolerance 6g).

### SPECIAL REQUESTS:

- None.



art.	I	C	A	B	L	F	h	h1	H	d	R	d1 6g	Q	g	F1 (N)	F2 (N)
● O45330.TM05X1001	15	18	30	17	35	18	11	19	25	4	11	M5	10	38	690	1080
● O45354.TM06X1501	30	22	54	21	44	22	13	22	30	5	15	M6	15	72	295	1670
● O45378.TM08X2001	42	32	78	30	61	30	18	31	42	8	21	M8	20	190	1025	2830

# O454



## UNIVERSAL HINGE WITH THREADED STUD/BORE FOR MOUNTING ON STRAIGHT DOOR

### Material:

Reinforced polyamide.  
Oils and greases resistant.

### Surface:

Satin.

### Colour:

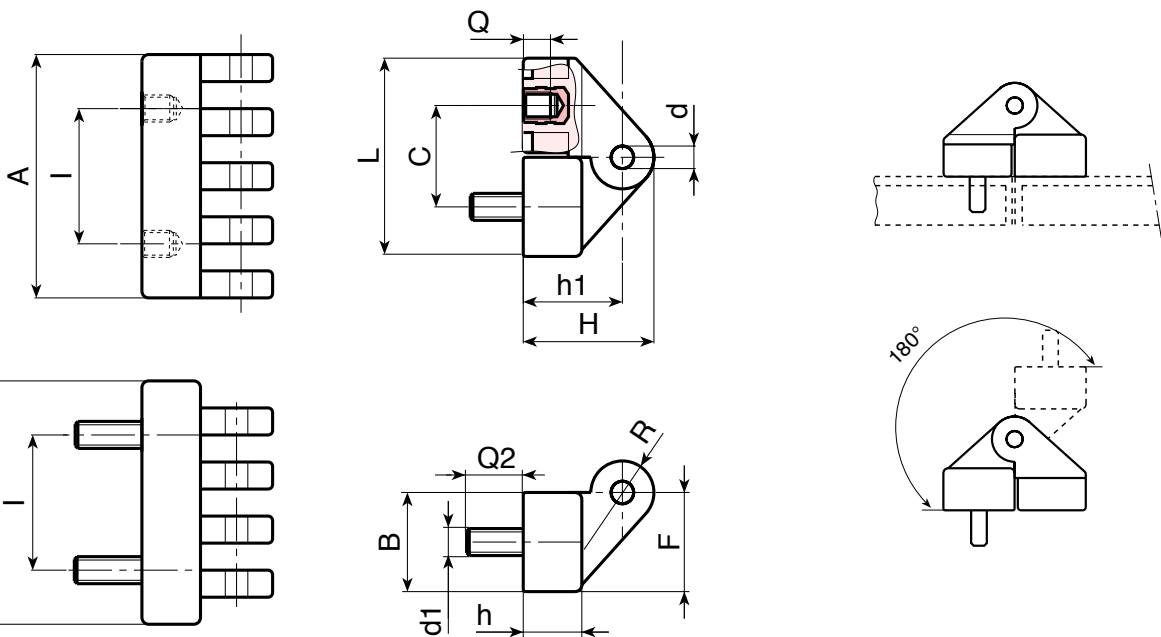
Black (RAL 9011).

### Inserts:

- Zinc plated steel pin.
- Zinc plated steel threaded stud (tolerance 6g).
- Brass blind threaded bush (tolerance 6H).

### SPECIAL REQUESTS:

- None.



art.	I	C	A	B	L	F	h	h1	H	d	R	d1 6g	Q	Q2	g	F1 (N)	F2 (N)
● O45454.TM0601	30	22	54	21	44	22	13	22	30	5	15	M06	7	15	72	295	1670



# O455



## UNIVERSAL HINGE WITH THREADED STUD/BORE FOR MOUNTING ON ANGULAR DOOR

**Material:**  
Reinforced polyamide.  
Oils and greases resistant.

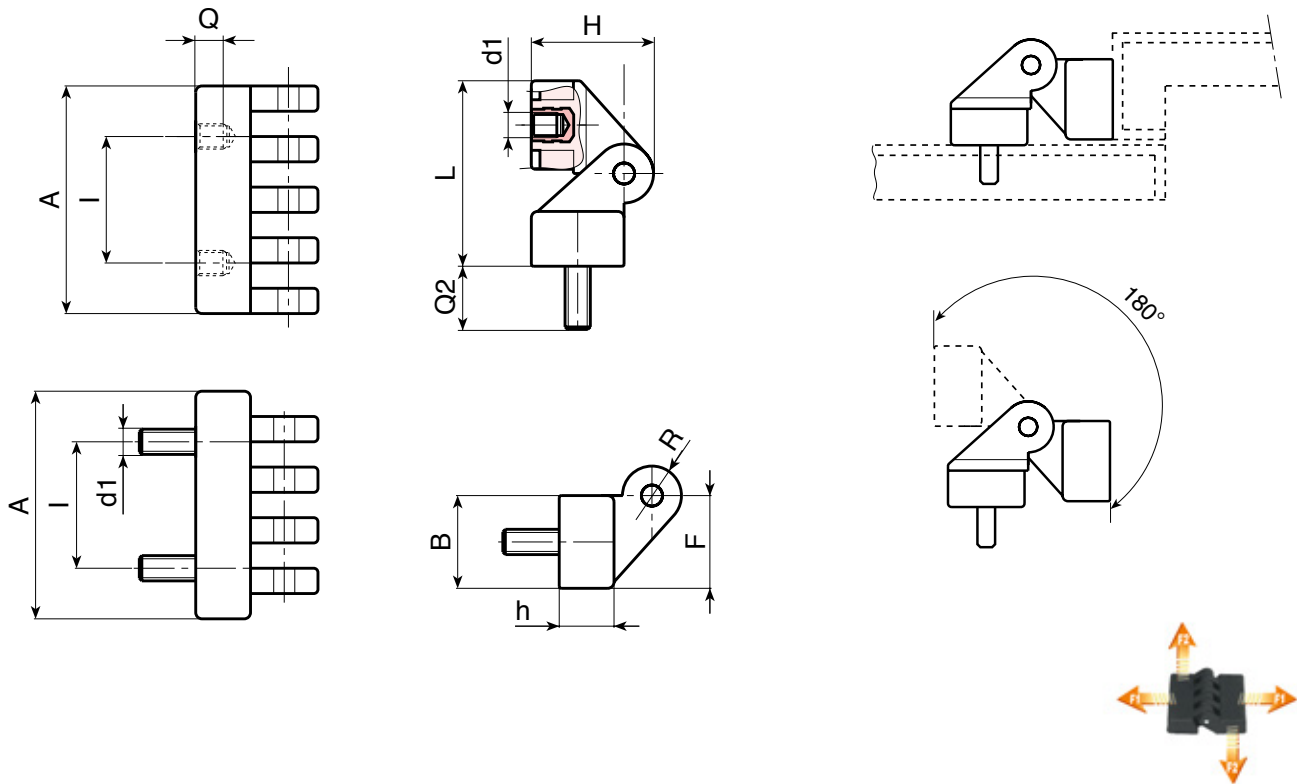
**Surface:**  
Satin.

**Colour:**  
Black (RAL 9011).

- Inserts:**
- Zinc plated steel pin.
  - Zinc plated steel threaded stud (tolerance 6g).
  - Brass blind threaded bush (tolerance 6H).

**SPECIAL REQUESTS:**

- None.



art.	I	C	A	B	L	F	h	h1	H	d	R	d1 6g	Q	Q2	△ g	F1 (N)	F2 (N)
● O45554.TM0601	30	22	54	21	44	22	13	22	30	5	15	M6	7	15	72	295	1670

# O300



## FLAT ZAMAK HINGE WITH BORE RIGHT THROUGH

### Material:

Die cast zamak alloy (zinc, aluminium and copper alloy).

### Surface:

#### O300:

Smooth. Black cataphoresis paint.

#### O300 L:

Shiny chrome plated.

**ATTENTION: the product is being discontinued and will be replaced by the galvanised version**

#### O300 Z:

Zinc plated.

### Inserts:

Stainless steel rotation pin, (Aisi 303).

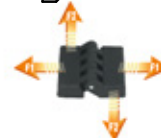
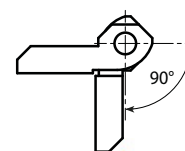
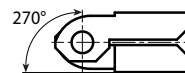
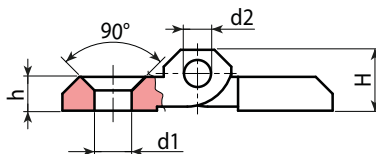
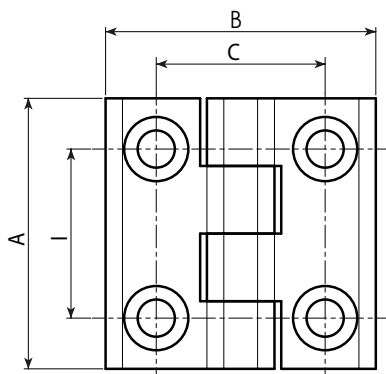
### Hole:

Through hole obtained by moulding. 90° countersunk hole for UNI 5933 - UNI 6109 screw.



### SPECIAL REQUESTS:

- None.



Version O300: black painted - 01

Art.	I	C	A	B	H	h	h1	d2	d1	Δg	F1 (N)	F2 (N)
O30025.ZG5.501	25	25	40	40	9	5	5,5	4	5,5	47		
O30030.ZG6.501	30	30	50	50	11,5	6	6	6	6,5	92	6230	1420
O30036.ZG6.501	36	36	60	60	11,5	6	6	6	6,5	100		
O30036.ZG8.501	36	36	60	60	11,5	6	6	6	8,5	98		
O30040.ZG6.501	40	40	64	64	11,5	6	6	6	6,5	110	4340	4200

Version O300-L: shiny chrome plated

Art.	I	C	A	B	H	h	h1	d2	d1	Δg	F1 (N)	F2 (N)
O30025.ZG5.5L	25	25	40	40	9	5	5,5	4	5,5	47		
O30030.ZG6.5L	30	30	50	50	11,5	6	6	6	6,5	92	6230	1420
O30036.ZG8.5L	36	36	60	60	15	8	9	8	8,5	100		

**ATTENTION: the product is being discontinued and will be replaced by the galvanised version**

Version O300-Z: zinc plated

Art.	I	C	A	B	H	h	h1	d2	d1	Δg	F1 (N)	F2 (N)
O30025.ZG5.5Z	25	25	40	40	9	5	5,5	4	5,5	47		
O30030.ZG6.5Z	30	30	50	50	11,5	6	6	6	6,5	92	6230	1420
O30036.ZG8.5Z	36	36	60	60	15	8	9	8	8,5	100		

# O300CIN



Aisi 316



## FLAT STAINLESS STEEL HINGE WITH BORE RIGHT THROUGH

**Material:**  
Stainless steel, (Aisi 316).

**Surface:**  
Natural brushed.

**Colore:**  
Inox naturale.

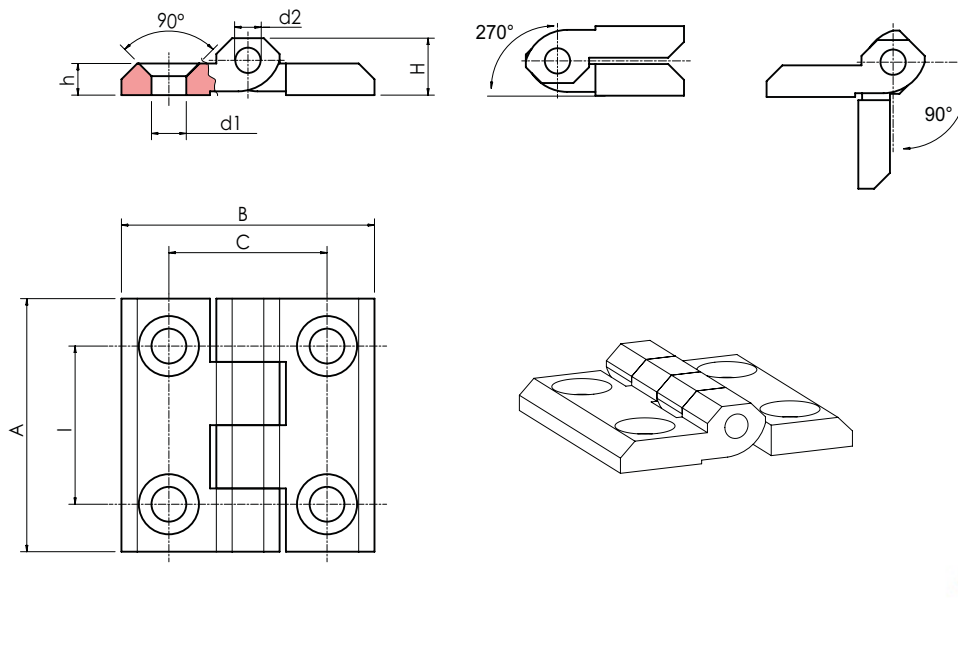
**Inserts:**  
Stainless steel rotation pin, (Aisi 303).

**Hole:**  
Through hole obtained by moulding. 90° countersunk hole for UNI 5933 - UNI 6109 screw.



### SPECIAL REQUESTS:

- None.



	Art.	l	C	A	B	H	h	h1	d2	d1	Δg	F1 (N)	F2 (N)
●	O30025.HG5.5CIN	25	25	40	40	9	5	5,5	4	5,5	60		
●	O30030.HG6.5CIN	30	30	50	50	11	5,5	6,5	6	6,5	95	19600	9800
●	O30036.HG8.5CIN	36	36	60	60	14,5	7,7	8,5	8	8,5	185		

Presumable presence in the stock in %

90% ● 40% ● 5% ●

# O305



## FLAT ZAMAK HINGE

**Material:**

Die cast zamak alloy (zinc, aluminium and copper alloy).

**Surface:**

Satinata.

**Colore:**

Naturale.

**Inserts:**

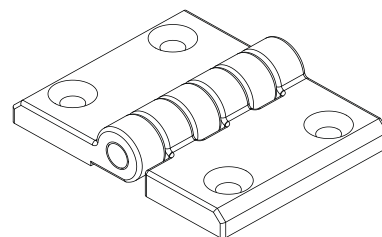
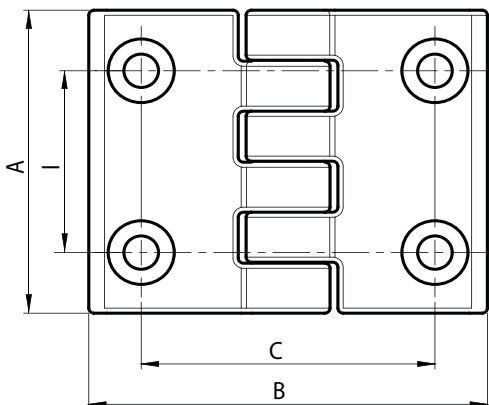
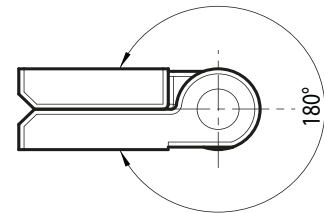
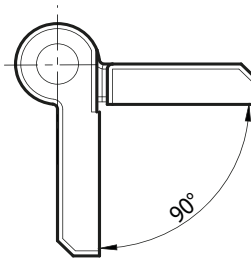
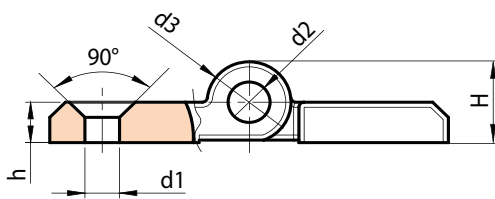
Galvanised steel pin.

**Hole:**

Through hole obtained by moulding. 90° counter-sunk hole for UNI 5933 - UNI 6109 screw.

**SPECIAL REQUESTS:**

- None.



art.	l	C	A	B	h	H	d2	d3	d1	g
O30536.ZG6.5PAL	36	56	60	76	8	16	8	15,5	6,5	250

# O520



## VERTICAL ZAMAK HINGE WITH SINGLE THREADED MOUNT

### Material:

(1-2) Die-cast zamak alloy (zinc, aluminium and copper alloy).

### Surface finish:

Light sandblasting.

### Colour:

(01) Black epoxy powder coated, (RAL 9011).

(Z) Standard blue galvanising.

### Inserts:

(3) Stainless steel (Aisi 304) hinge pivot pin.

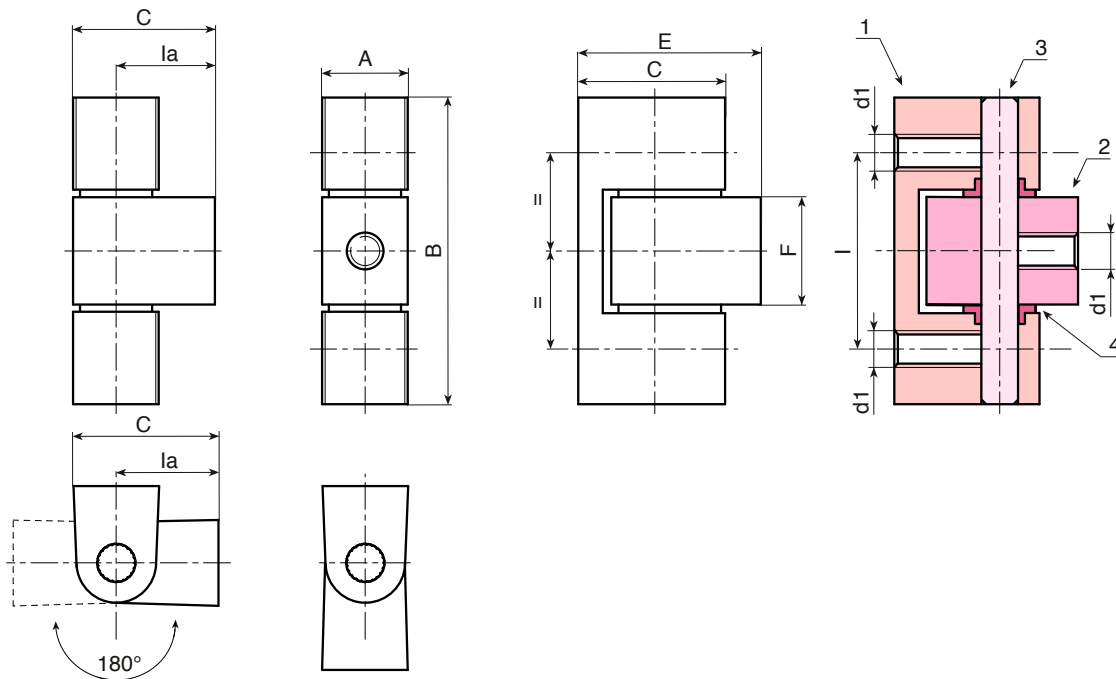
(4) Natural PA6 spacer bush.

### Holes:

Threaded holes obtained by M06 moulding.

### SPECIAL REQUESTS:

- None.



Black coated version code 01

art.	l	la	A	B	C	E	F	d1	g
<b>O520032.ZM0601</b>	<b>32</b>	<b>12</b>	14	50	19	24	17,5	<b>M06</b>	78

Galvanised version code Z

art.	l	la	A	B	C	E	F	d1	g
<b>O520032.ZM06Z</b>	<b>32</b>	<b>12</b>	14	50	19	24	17,5	<b>M06</b>	78

Presumable presence in the stock in % **90%** **40%** **5%**



# O530



## BASIC VERTICAL LIFT-OFF HINGE

### Material:

(1-2) Die-cast zamak alloy (zinc, aluminium and copper alloy).

### Surface finish:

Light sandblasting.

### Colour:

(01) Black epoxy powder coated, (RAL 9011).

(Z) Standard blue galvanising.

### Inserts:

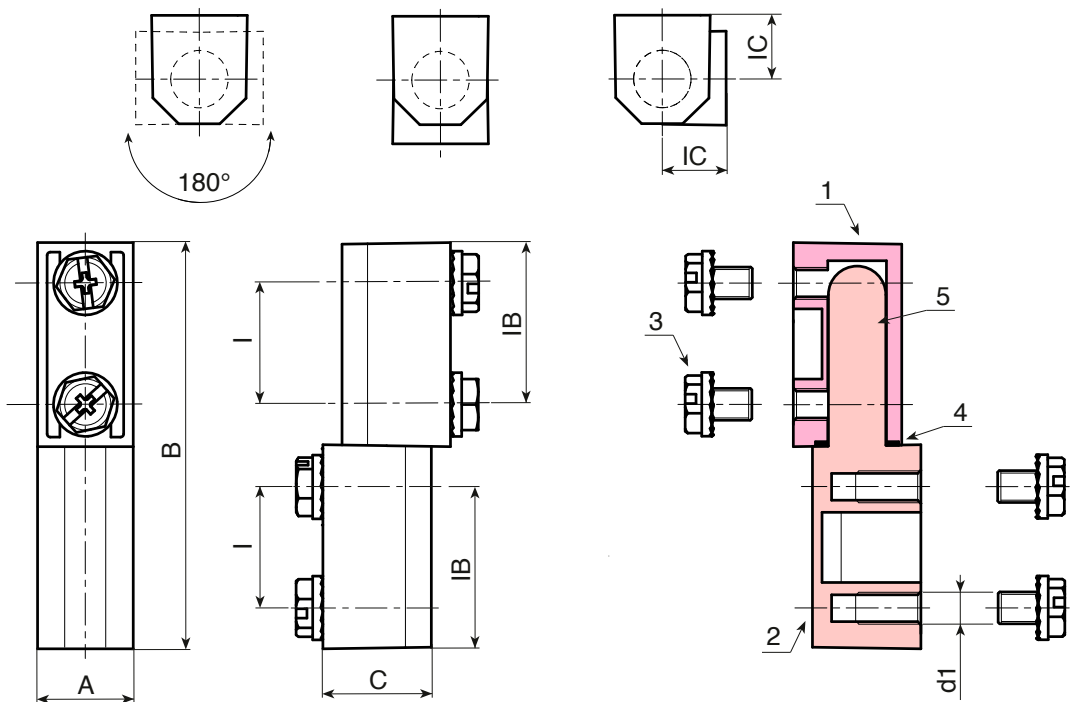
(3) 4 zinc-plated steel screws M5x6 with toothed lock washer.

(4) Black oxide treated spacer washer.

(5) Moulded zamak pivot pin.

### SPECIAL REQUESTS:

- On request and for special quantities (100 pieces) the hinge can be supplied with a stainless steel (Aisi 304) pivot pin.



Black coated version code 01

art.	I	IB	IC	A	B	C	d1	g
<b>O530019.ZM0501</b>	19	25,5	10	14	64,5	17	<b>M05</b>	86

Galvanised version code Z

art.	I	IB	IC	A	B	C	d1	g
<b>O530019.ZM05Z</b>	19	25,5	10	14	64,5	17	<b>M05</b>	86

# O510



## VERTICAL ZAMAK HINGE WITH EXTENSION

### Material:

(1-2-5) Die-cast zamak alloy (zinc, aluminium and copper alloy).

### Surface finish:

Light sandblasting.

### Colour:

(01) Black epoxy powder coated, (RAL 9011).

(Z) Standard blue galvanising.

### Inserts:

(3) Stainless steel (Aisi 304) hinge pivot pin.

(4) Natural PA6 spacer bush.

### Extension:

The hinge can be purchased with the extension (5) by adding the letter P at the end of the code.

### Holes:

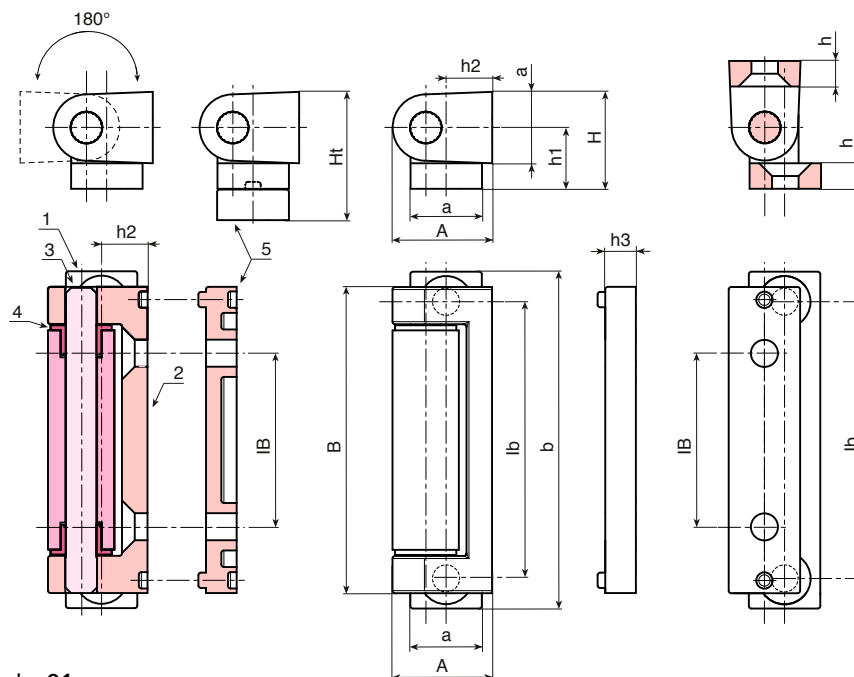
Through holes obtained by moulding. 90° countersunk hole for M5 screws UNI 5933 - UNI 6109.



### SPECIAL REQUESTS:

- It is possible to order, separately, an additional thickness of 6 mm in black using code no. O51160.ZG05.501; or zinc plated using code no. O51160.ZG05.5Z.

**ATTENTION:** The hinge is delivered with the pivot pin unassembled, as it must be removed in any case before mounting on the door.



Black coated version code 01

art.	lb	IB	A	a	B	b	H	Ht	h	h1	h2	h3	d1	g
O510054.ZG05.501	54	34	19,5	14	60	66	19	-	5	12,5	9	6	5,3	100
O510054.ZG05.501P	54	34	19,5	14	60	66	-	25	5	12,5	9	6	5,3	111

Galvanised version code Z

art.	lb	IB	A	a	B	b	H	Ht	h	h1	h2	h3	d1	g
O510054.ZG05.5Z	54	34	19,5	14	60	66	19	-	5	12,5	9	6	5,3	100
O510054.ZG05.5ZP	54	34	19,5	14	60	66	-	25	5	12,5	9	6	5,3	111

Presumable presence in the stock in %  
 90% ● 40% ● 5% ●

# O500



## REMOVABLE FLAT ZAMAK HINGE WITH THREADED STUD

### Materiale:

(1) Die-cast zamak alloy (zinc, aluminium and copper alloy).

### Surface finish:

Smooth.

### Colour:

(01) Black epoxy powder coated, (RAL 9011).

(Z) Standard blue galvanising.

### Inserts:

(2) Galvanised steel threaded stud, (thread tolerance 6g).

(3) Stainless steel (Aisi 304) hinge pivot pin.

(4) Stainless steel (Aisi 304) separating washer inserted between the two knuckles.

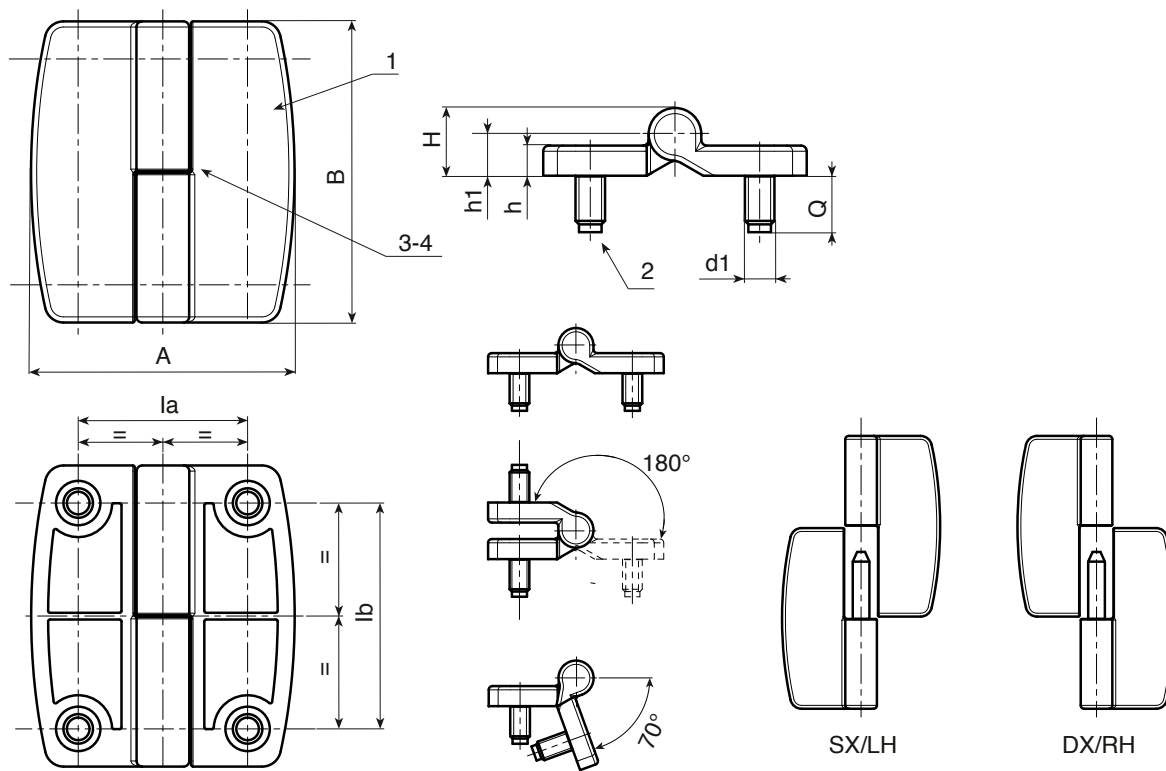
### Mounting:

The hinge can be supplied with assembly for door with right-hand opening (DX / RH) or with left-hand opening (SX / LH).



### SPECIAL REQUESTS:

- None.



### Black coated version code 01

art.	la	lb	A	B	h	H	h1	d1 <sup>6g</sup>	Q	⚖ g
● O500045.ZM08X1401D	45	60	70	80	8	18	11	M08	14	281
● O500045.ZM08X1401S	45	60	70	80	8	18	11	M08	14	281

### Galvanised version code Z

art.	la	lb	A	B	h	H	h1	d1 <sup>6g</sup>	Q	⚖ g
● O500045.ZM08X14ZD	45	60	70	80	8	18	11	M08	14	281
● O500045.ZM08X14ZS	45	60	70	80	8	18	11	M08	14	281

# O505



## ASYMMETRICAL FLAT ZAMAK HINGE WITH THREADED STUD

### Material:

(1) Die-cast zamak alloy (zinc, aluminium and copper alloy).

### Surface finish:

Smooth.

### Colour:

(01) Black epoxy powder coated, (RAL 9011).

(Z) Standard blue galvanising.

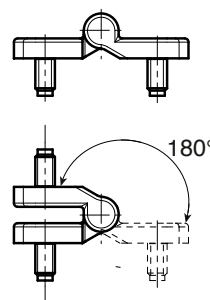
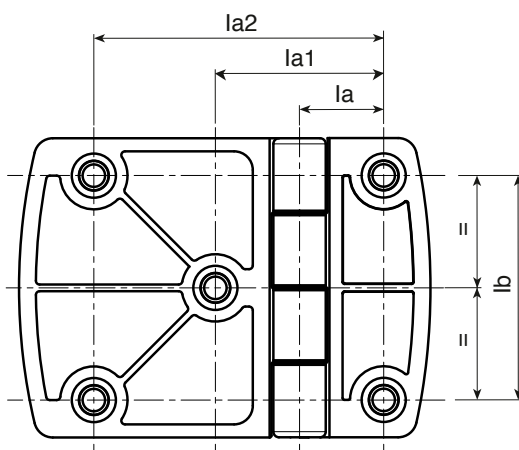
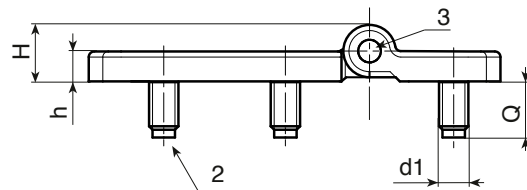
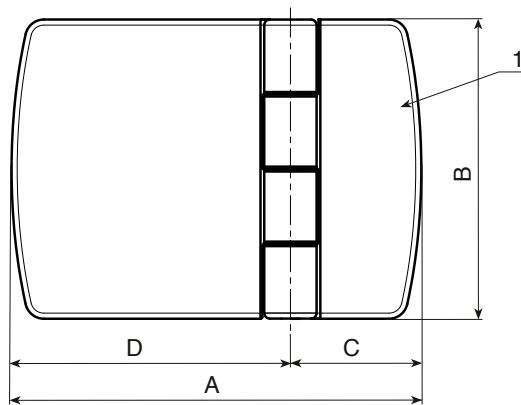
### Inserts:

(2) Galvanised steel threaded stud, (thread tolerance 6g).

(3) Stainless steel (Aisi 304) hinge pivot pin.

### SPECIAL REQUESTS:

- None.



Black coated version code 01

	art.	la	la1	la2	lb	A	B	C	E	h	H	d1 <sup>6g</sup>	Q	⚖ g
●	O505077.ZM08X1401	22,5	45	77,5	60	110	80	34	76	8	18	M08	14	387

Galvanised version code Z

	art.	la	la1	la2	lb	A	B	C	E	h	H	d1 <sup>6g</sup>	Q	⚖ g
●	O505077.ZM08X14Z	22,5	45	77,5	60	110	80	34	76	8	18	M08	14	387

Presumable presence in the stock in %   
 90% ● 40% ● 5% ●



# O515



C20



## BASIC PUNCHED STEEL HINGE WITH THROUGH HOLES

### Material:

(1) Steel punched and bent.

### Surface finish:

Smooth.

### Colour:

(01) Black epoxy powder coated,  
(RAL 9011).

(Z) Standard blue galvanising.

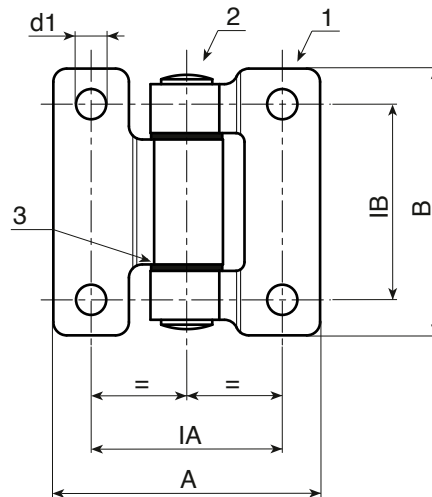
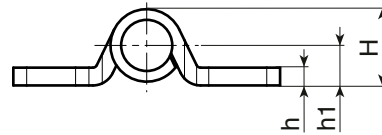
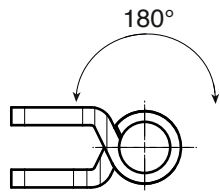
### Inserts:

(2) Stainless steel (Aisi 304) hinge pivot pin.

(3) Natural PA6 separating washer inserted  
between the two knuckles.

### SPECIAL REQUESTS:

- None.



Black coated version code 01




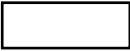







art.	la	lb	A	B	h	H	h1	d1	Δ g
<b>O515040.VG06,501</b>	<b>40</b>	<b>40</b>	60	60	4	17	9	<b>6,5</b>	143

Galvanised version code Z

art.	la	lb	A	B	h	H	h1	d1	Δ g
<b>O515040.VG06,5Z</b>	<b>40</b>	<b>40</b>	60	60	4	17	9	<b>6,5</b>	143

# COLOUR CHART

## RAL COLOURS CODING

Colour		RAL	Cod.
Black		9011	01
Orange		2004	02
Orange		2011	03
White		9010	04
Blue		5015	07
Yellow		1007	09
Yellow		1021	10
Grey		7024	12
Grey		7035	13
Red		3000	16
Green		6024	17

AUTHORISED RESELLER

**BOTECO Srl**

**[www.boteco.it](http://www.boteco.it)**

36010 ZANE' (VI) - ITALY

Via L. Pettinà 16 ( side street of Via Cuso)

Switchboard Tel.:+39-0445-316411 - Fax:+39-0445-316400

Sales Fax:+39-0445-316401 mail: [commerciale@boteco.it](mailto:commerciale@boteco.it)

Administration Fax:+39-0445-316402 mail: [amministrazione@boteco.it](mailto:amministrazione@boteco.it)

Technical Fax:+39-0445-316404 mail: [tecnico@boteco.it](mailto:tecnico@boteco.it)

**Certified Mail Box: [boteco@pec.botecopec.it](mailto:boteco@pec.botecopec.it)**

