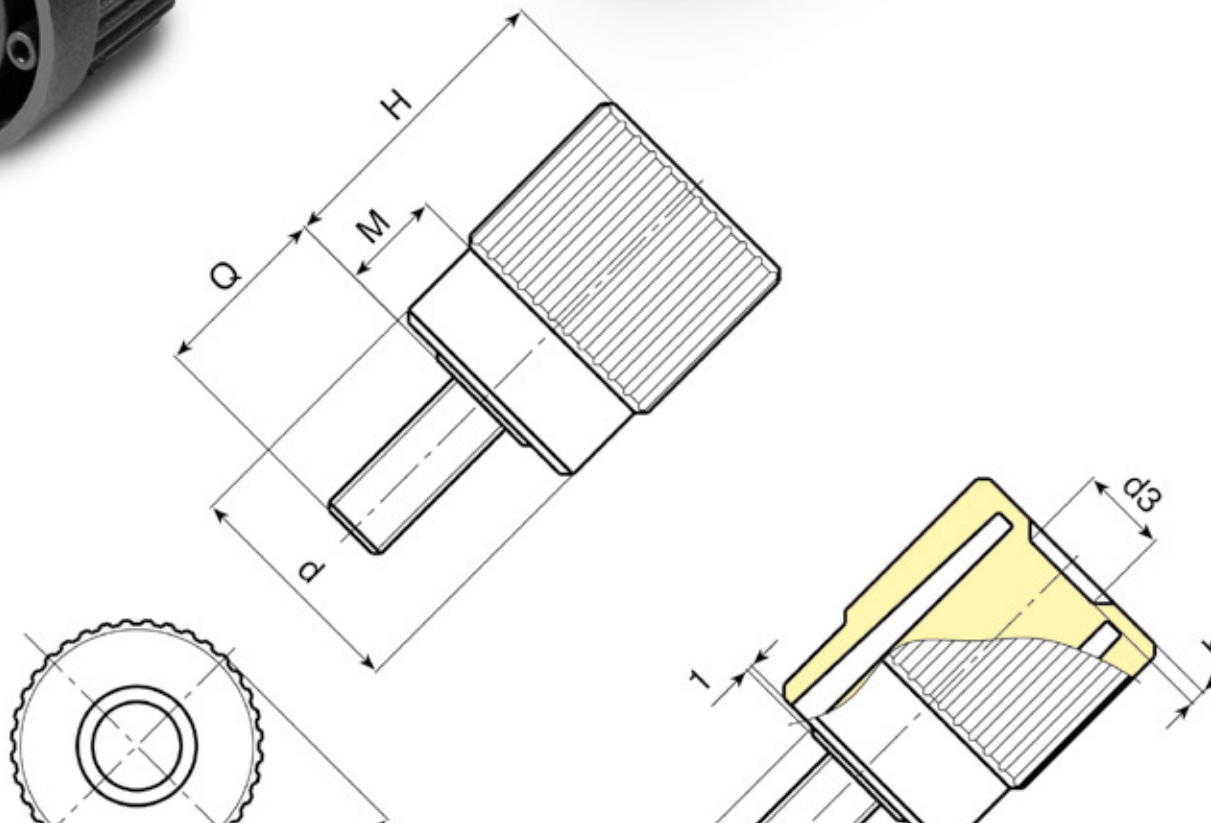




BOTECO[®]

Family N

CONTROL KNOBS



N240



CONTROL KNOB WITH STEEL INSERT AND THROUGH HOLE

Material:
Reinforced and polyamide.
Oils and greases resistant.

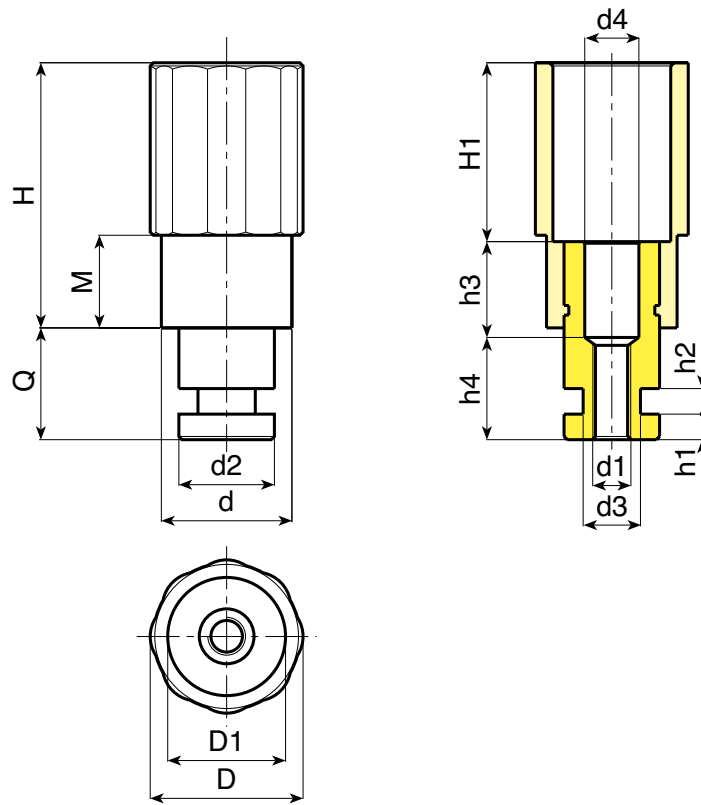
Surface:
Satin.

Colour:
Black (RAL 9011).

Main Insert:
Zinc plated steel insert with threaded right through hole and plughole (6H thread tolerance).

SPECIAL REQUESTS:

- None.



Art.	D	D1	d	H	H1	M	Q	d2	d1	d3	d4	h1	h2	h3	h4	g
● N24050.T.....	39	21	32	63	33	12	25÷40	20	A.R.	A.R.	A.R.	A.R.	A.R.	A.R.	A.R.	-
● N24050.T.....	48	36	41	83	55	29	25÷40	28÷30	A.R.	A.R.	A.R.	A.R.	A.R.	A.R.	A.R.	-

A.R. = Only by customers request. Minimum 200 pieces.

Presumable presence in the stock in %
90% ● 40% ● 5% ●

N244



CONTROL KNOB WITH STEEL INSERT AND THROUGH HOLE

Material:

Reinforced and polyamide.
Oils and greases resistant.

Surface:

Satin.

Colour:

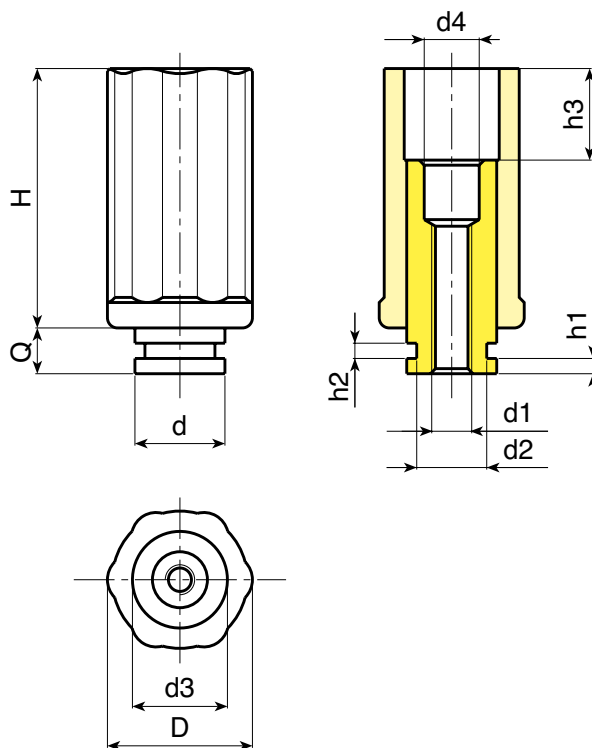
Black (RAL 9011).

Main Insert:

Zinc plated steel insert with threaded right through hole and plughole (6H thread tolerance).

SPECIAL REQUESTS:

- None.



Art.	D	H	d3	h3	Q	d	d1	d2	d4	h1	h2	g
N24430.T.....	30	21	32	63	33	12	25÷40	20	A.R.	A.R.	A.R.	-
N24450.T.....	50	36	41	83	55	29	25÷40	28÷30	A.R.	A.R.	A.R.	-

A.R. = Only by customers request. Minimum 200 pieces.

N241



CONTROL KNOB WITH CAP AND FEMALE THREADED INSERT

Material:

Reinforced and polyamide.
Oils and greases resistant.

Surface:

Satin.

Colour:

Black (RAL 9011).

Central Cap:

Grey polyamide (RAL 7035 cod. 13).

Alternative Cap Colour:

Orange (RAL 2004 cod. 02)
Blue (RAL 5015 cod. 07)
Yellow (RAL 1021 cod. 10)
Red (RAL 3000 cod. 16)
Green (RAL 6024 cod. 17)
Black (RAL 9011 cod. 01)

Main Insert:

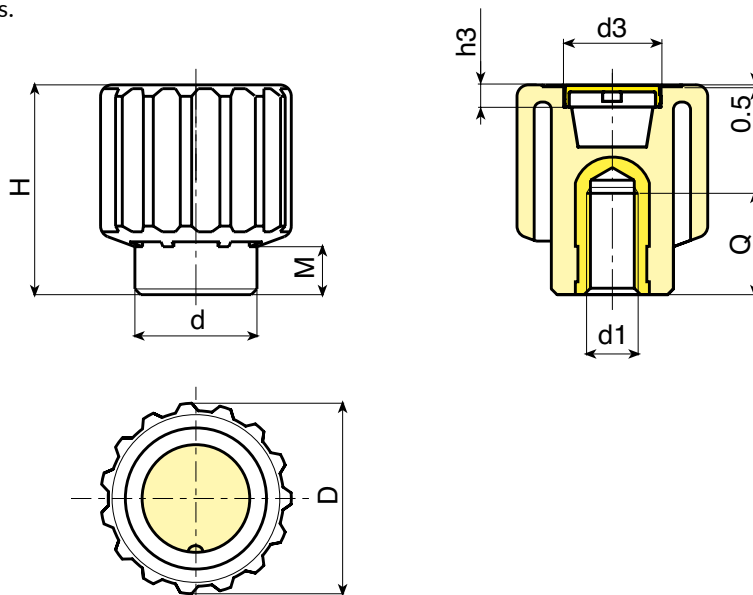
Brass insert with threaded blind bore
(6H tolerance).

(*) Zinc plated steel insert with threaded blind hole
(6H tolerance).



SPECIAL REQUESTS:

- It's possible to supply the inserts in different material and treatment-finishes, on request and for quantities.
- It's possible to supply the products with colours as shown in the table at page N-25, on request and for quantities.



	Art.	D	H	M	d	d3	h3	d1 6H	Q	Δ g
●	N24150.TM0801	49	55	13	32	34	5	M08	20	72
●	N24150.TM1001	49	55	13	32	34	5	M10	18	72
●	N24150.TM1201	49	55	13	32	34	5	M12	18	73
●	N24150.TM1401	49	55	13	32	34	5	M14	18	74
●	N24150.TM1601	49	55	13	32	34	5	M16 (*)	18	77

N740



KNURLED CONTROL KNOB WITH FEMALE THREADED INSERT

Material:

Reinforced and polyamide.
Oils and greases resistant.

Surface:

Satin.

Colour:

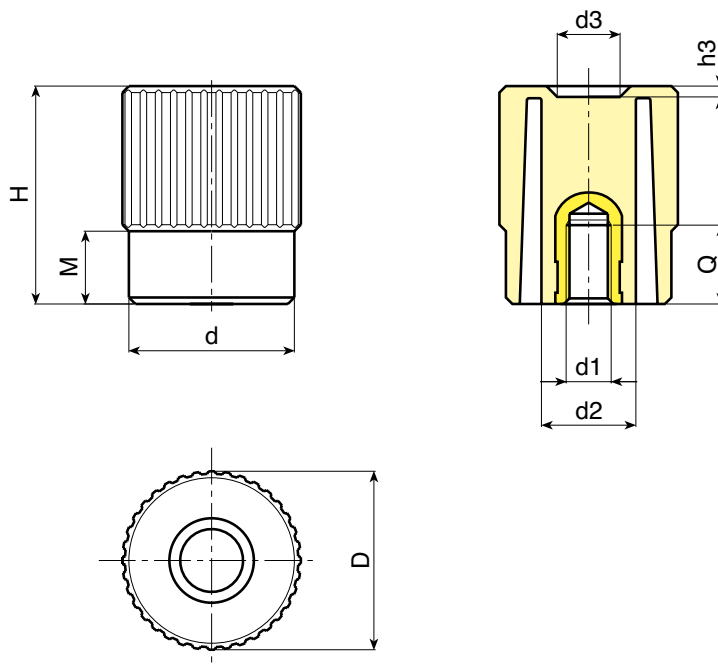
Black (RAL 9011).

Main Insert:

Brass blind threaded bush (tolerance 6H).

SPECIAL REQUESTS:

- It is possible to supply the inserts in different materials, on request and for quantities.
- It's possible to supply the products with colours as shown in the table at page N-25, on request and for quantities.



	Art.	D	H	M	d	d2	d3	h3	d1 6H	Q	⚖️ g
●	N74040.TM0801	41	51	16,5	38	22	14,5	2	M08	20	60
●	N74040.TM1001	41	51	16,5	38	22	14,5	2	M10	18	61
●	N74040.TM1201	41	51	16,5	38	22	14,5	2	M12	18	62
●	N74040.TM1401	41	51	16,5	38	22	14,5	2	M14	18	63

N741



KNURLED CONTROL KNOB WITH THREADED STUD

Material:

Reinforced and polyamide.
Oils and greases resistant.

Surface:

Satin.

Colour:

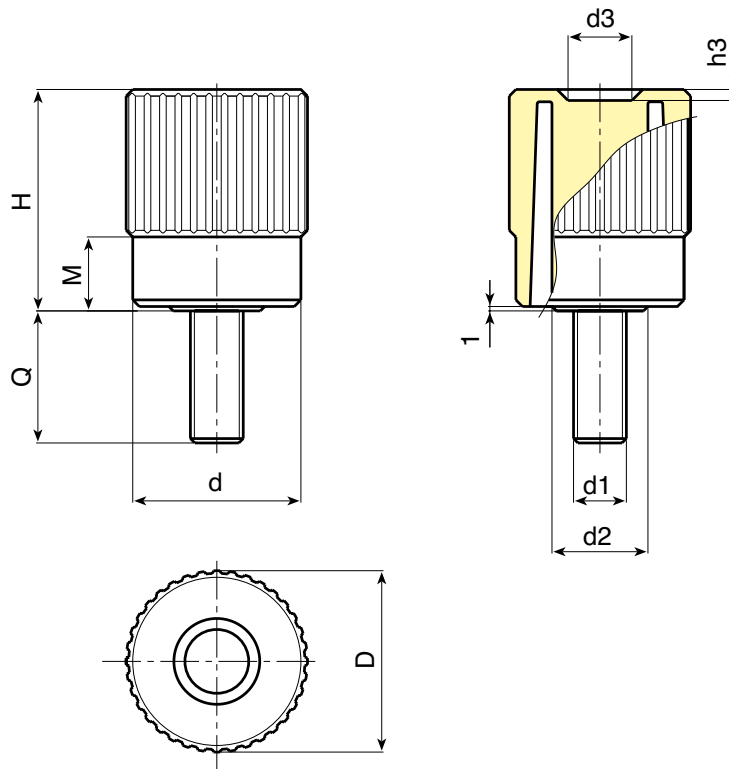
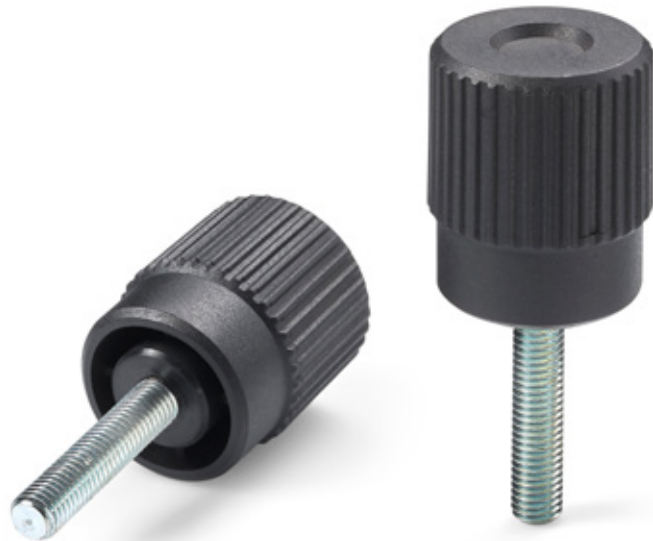
Black (RAL 9011).

Main Insert:

Zinc plated steel threaded stud (tolerance 6g).

SPECIAL REQUESTS:

- It is possible to supply inserts in different lengths or by special design, on request and for quantities.
- It is possible to supply inserts in different materials, on request and for quantities.
- It's possible to supply the products with colours as shown in the table at page N-25, on request and for quantities.



Art.	D	H	M	d	d2	d3	h3	LM	d1 6g	Q	⚖ g
● N74140.TM10X..01	41	51	16,5	38	22	14,5	2	90	M10	A.R.	-
● N74140.TM12X..01	41	51	16,5	38	22	14,5	2	90	M12	A.R.	-
● N74140.TM14X2001	41	51	16,5	38	22	14,5	2	90	M14	20	100

Enter the stud length choice in the two .. of the article code. A.R. = by request with 250 pieces minimum quantity.

LM = Maximum mouldable length.

N742



KNURLED CONTROL KNOB WITH SMOOTH BORED INSERT

Material:

Reinforced and polyamide.
Oils and greases resistant.

Surface:

Satin.

Colour:

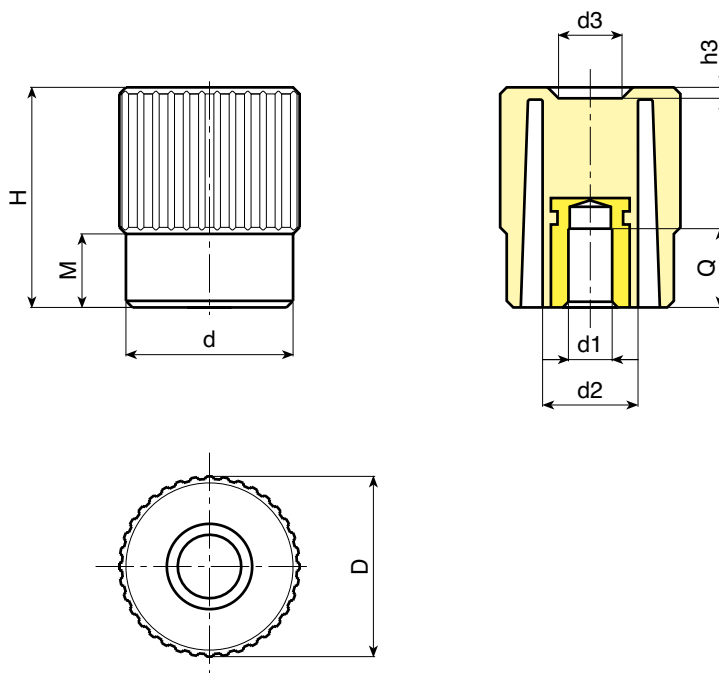
Black (RAL 9011).

Main Insert:

Zinc plated steel insert with smooth blind hole (H10 tolerance).

SPECIAL REQUESTS:

- It's possible to supply the inserts with d1 bore by customer design, on request and for quantities.
- It's possible to supply the inserts in different material and treatment-finishes, on request and for quantities.
- It's possible to supply the products with colours (reduced range) as shown in the table at page N-25, on request and for quantities.



	Art.	D	H	M	d	d2	d3	h3	Dm	d1 H10	Q	g
●	N74240.TP0501	41	51	16,5	38	22	14,5	2	12	05	20	90
●	N74240.TD1001	41	51	16,5	38	22	14,5	2	12	10	20	80

Attention: bore d1 (H10 tolerance) could be produced by request, with 200 pieces minimum.

Dm = It's possible to increase the hole, by boring, until Dm (enlarge).

N775



4 LOBE CONTROL KNOB WITH FEMALE THREADED INSERT

Material:

Reinforced and polyamide.
Oils and greases resistant.

Surface:

Satin.

Colour:

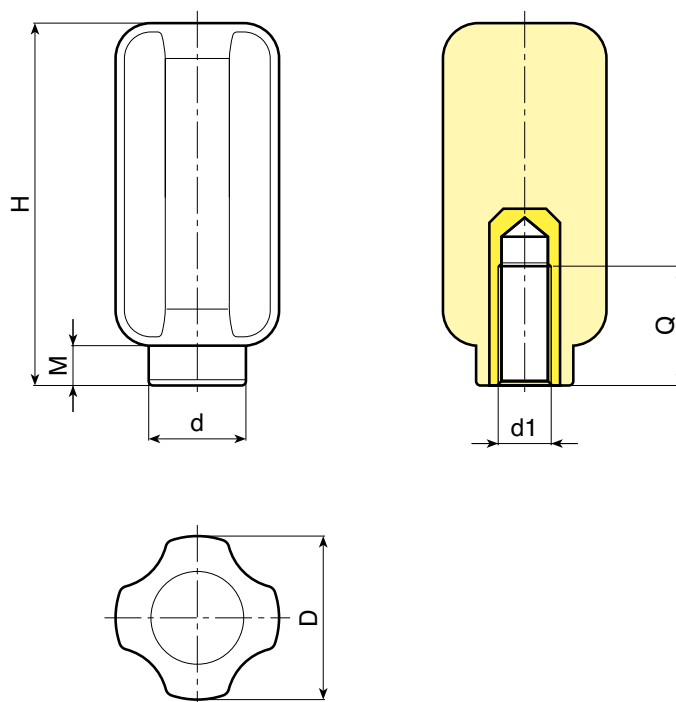
Black (RAL 9011).

Main Insert:

Zinc plated steel blind threaded bush.
(tolerance 6H).

SPECIAL REQUESTS:

- It is possible to supply the inserts in different materials, on request and for quantities.



	Art.	D	H	M	d	d1 6H	Q	⚖ g
●	N77538.TM0801	37	81	9	22	M08	20	94
●	N77538.TM1001	37	81	9	22	M10	20	128
●	N77538.TM1201	37	81	9	22	M12	27	120
●	N77538.TM1401	37	81	9	22	M14	27	116
●	N77538.TM1601	37	81	9	22	M16	16	110

N776



4 LOBE CONTROL KNOB WITH THREADED STUD

Material:

Reinforced and polyamide.
Oils and greases resistant.

Surface:

Satin.

Colour:

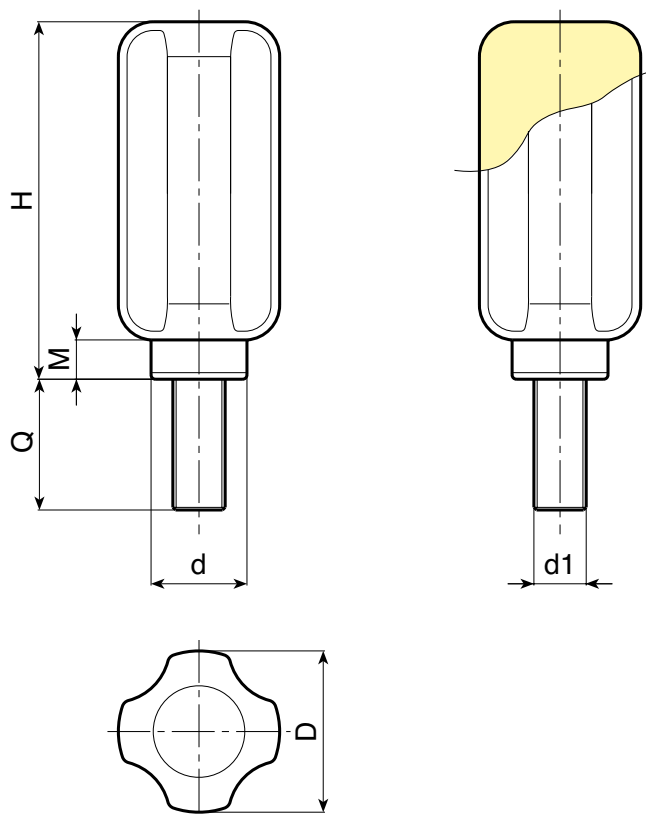
Black (RAL 9011).

Main Insert:

Zinc plated steel threaded stud (tolerance 6g).

SPECIAL REQUESTS:

- It is possible to supply inserts in different lengths or by special design, on request and for quantities.
- It is possible to supply inserts in different materials, on request and for quantities.



	Art.	D	H	M	d	LM	d1 6g	Q	g
●	N77638.TM08X..01	37	81	9	22	130	M08	A.R.	-
●	N77638.TM10X..01	37	81	9	22	130	M10	A.R.	-
●	N77638.TM12X3001	37	81	9	22	130	M12	30	135

Enter the stud length choice in the two .. of the article code. A.R.= by request with 250 pieces minimum quantity.

LM = Maximum mouldable length.

N777



4 LOBE CONTROL KNOB WITH SMOOTH BORED INSERT

Material:

Reinforced and polyamide.
Oils and greases resistant.

Surface:

Satin.

Colour:

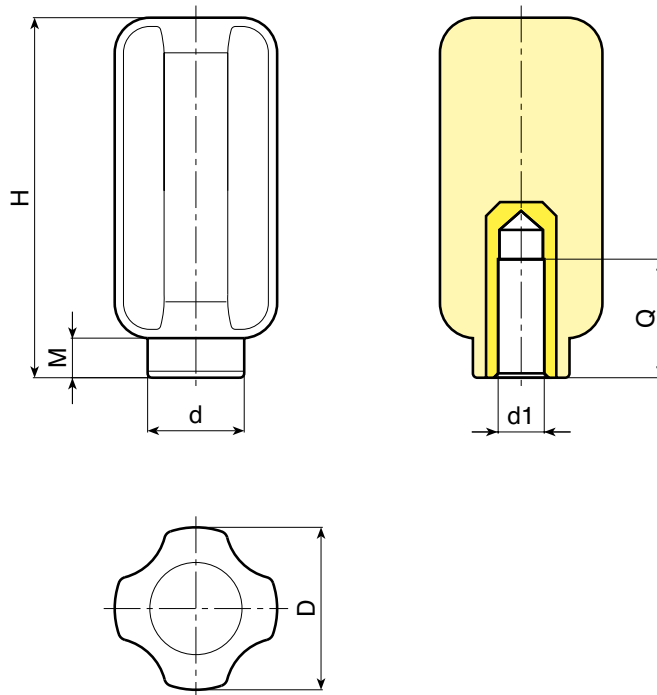
Black (RAL 9011).

Main Insert:

Zinc plated steel insert with smooth blind hole (H10 tolerance).

SPECIAL REQUESTS:

- It's possible to supply the inserts with d1 bore by customer design, on request and for quantities.
- It's possible to supply the inserts in different material and treatment-finishes, on request and for quantities.



	Art.	D	H	M	d	Dm	d1 H10	Q	g
●	N77738.TD0801	37	81	9	22	12	08	20	108
●	N77738.TD1201	37	81	9	22	12	12	15	130

Attention: bore d1 (H10 tolerance) could be produced by request, with 200 pieces minimum.

Dm = It's possible to increase the hole, by boring, until Dm (enlarge).

N280

KNURLED INDEXING KNOB WITH STEPLESS POSITIONING

Materials:

1. Stainless steel (AISI 304) base with clutch housing and fixing holes.
2. Aluminium scale ring (Alloy 6060).
3. Reinforced polyamide knob. Resistant to oil and grease.
5. ABS hub cap.
6. Stainless steel (AISI 303) hexagon socket fixing cover.
7. Black-oxide treated steel circlip (UNI 3653).
8. Stainless steel (AISI 304) clutch and lock mechanism.
10. Stainless steel (AISI 303) self-tapping screws for fixing scale ring TCS 2.9x13.

Surfaces and Colours:

1. Natural shiny surface with engraved arrow.
2. Black anodized surface.
3. Black satin finish (RAL 9011).
5. Grey satin finish (RAL7035).
- 6-8. Natural shiny surface.

Fixing To The Machine:

Fixed to the machine with n°3 M5 cheese head Allen screws (position 9 in the drawing) (DIN 912).



Graduated Flange:

The standard numbering on the scale ring goes from 0 to 9 with 10 graduations for each unit. (total of 100 graduations). For a minimum quantity of 30 pieces numbering can be executed to customer's specifications.

Locking Shaft To Control Knob:

The shaft is coupled to the knob by means of a shaft with keyway. Caution! For technical reasons the keyway is very small. See attached diagram for bore/shaft dimensions.

Bore:

The shaft bore is executed with an H7 tolerance. It does not require a side bore for fixing. The diameter of the bore is fixed and cannot be varied.

SPECIAL REQUESTS:

- On request the hub cap can be provided in the colours specified in the table on page N-25.
- Upon request and for sufficient quantities (30) the numbering on the scale ring can be customized.

CHARACTERISTICS:

The main feature of this product is the possibility of making a continuous adjustment of the machine shaft to which it is attached and of maintaining the selected position. The special clutch, the heart of the mechanism, permits very small continuous movements and therefore the possibility of making precision adjustments in both directions. Once the desired position is reached, the clutch prevents any rotation caused by small vibrations or movements arriving from the shaft. The use of this system prevents accidental or involuntary rotation of the shaft.

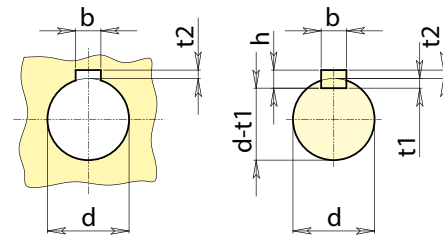
LIMITATIONS:

The clutch is not sufficient to block any movements caused by strong vibrations. Moreover the control knob is not capable of withstanding the weight of the shaft, therefore it does not replace the normal support systems (bearings, flanges, etc...).

The control knob cannot be used with motor drive systems.

Reduced depth keyway executed in compliance with a DIN 6885-2

d	bxh	t2	t1	d-t1
12	4x4	1,1	3	9

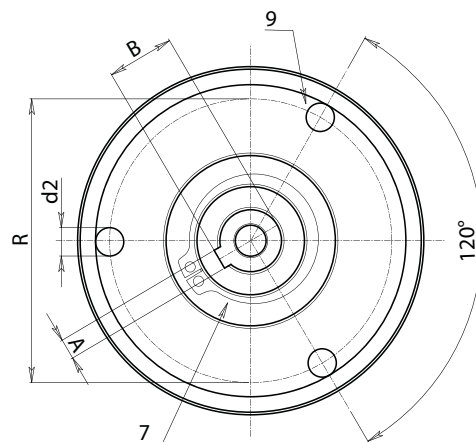
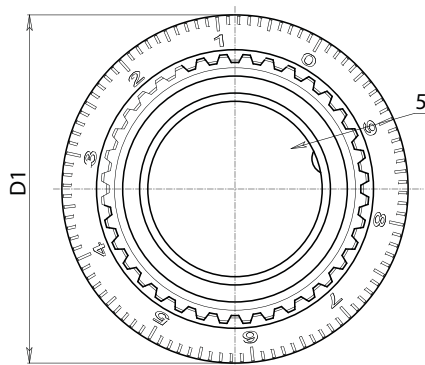
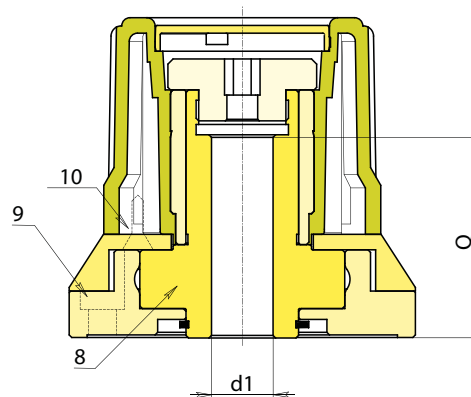
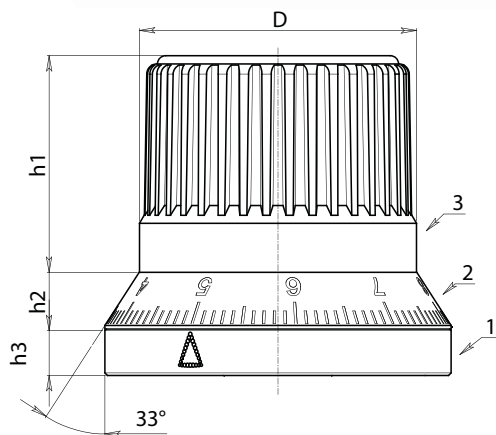


+135°
-20°

PA6
+G.F.

UL94
HB

RoHS
COMPLIANT



Art.	D	D1	h1	h2	h3	R	d2	A	B	d1 H7	Q	g
N28054.HNZ1000113CIN	54	67,5	42	11	9	55	5,5	4	13,1	12	39	550

Presumable presence in the stock in %
 90% ● 40% ● 5% ●

N282

KNURLED INDEXING KNOB WITH STEPLESS POSITIONING AND LOCKING ACTION

Material:

1. Hardened steel C45 base with fixing holes.
2. Aluminium (alloy 2011) flange with laser engraved numbers.
3. Reinforced polyamide control knob. Resistant to oils and greases.
4. Stainless steel fastening cap with hexagon socket (Aisi 303).
5. Polyamide hole cover cap.
6. Black-oxide treated snap ring (UNI 653).
7. High resistance tempered and hardened steel rotating cam shaft, with through hole and keyway.
8. Stainless steel (Aisi 303) knob insert.
10. Stainless steel (Aisi 303) self-tapping screws TCS 2.9x19 for fastening the bush.
11. Aluminium (alloy 2011) turned unlocking pin holder bush.
12. Stainless steel (Aisi 302) pressure spring.
13. Hardened stainless steel (Aisi 52100 grade G2) locking roller.
14. Two turned stainless steel (Aisi 303) unlocking pins.
15. Black-oxide treated steel fixing screw M03x8 DIN 5933 for aluminium flange.



Surface and Colour:

1. Standard black-oxide treatment with laser engraved arrow.
2. Black anodized.
3. Black Satin (RAL 9011 code 1).
4. Natural shine.
5. Black satin (RAL7035).
- 6-14 Natural shine.

Fastening to the machine:

Fastened to the machine with 3 cheese-head hexagon socket screws M05 (DIN 912) (position 9 in the drawing).

Hole:

The shaft hole is machined to H7 tolerance. Side fixing hole is not required. The diameter of the hole is fixed and cannot be varied.

Coupling of the shaft to the knob:

The shaft is coupled to the knob by means of a shaft with keyway.

Attention! the key, for technical reasons, is small in size. See attached diagram for bore/shaft dimensions.

Graduated flange:

The flange is available in two versions:

Z1: The standard numbering of the flange goes from 0 to 9 with 10 graduations for each unit. (100 graduations).

Z2: Vertical line without numbers.

Attention! select the rotation direction (O= clockwise A=counter clockwise). Specific custom graduations are available for a minimum quantity of 50 pieces.

SPECIAL REQUESTS:

- On request the hub cap can be provided in the colours specified in the table on page N-25.
- Upon request and for sufficient quantities (30) the numbering on the scale ring can be customized.

FEATURES:

The main feature of this item is the automatic locking function once the knob is released. This gives the possibility of locking the shaft that the knob is coupled with, in the desired position. The initial part of the rotation of the knob serves to unlock the internal mechanism. Whether turning the knob counter clockwise or clockwise. Stopping the rotation releases the knob and a spring forces the knob to move in the opposite direction and the automatic lock activates. This system prevents accidental or involuntary rotations of the shaft.

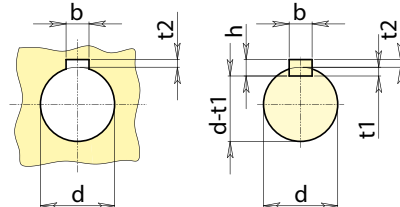
LIMITATIONS:

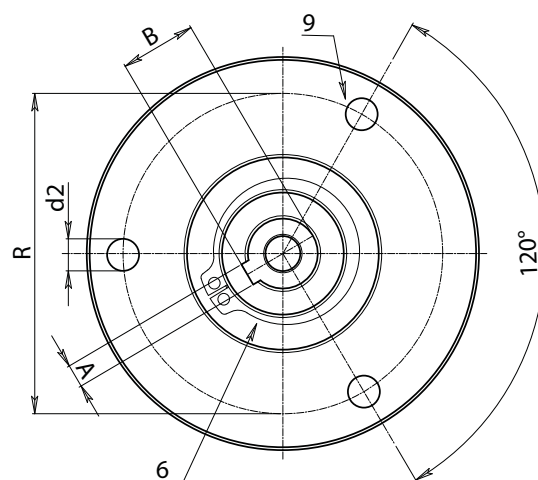
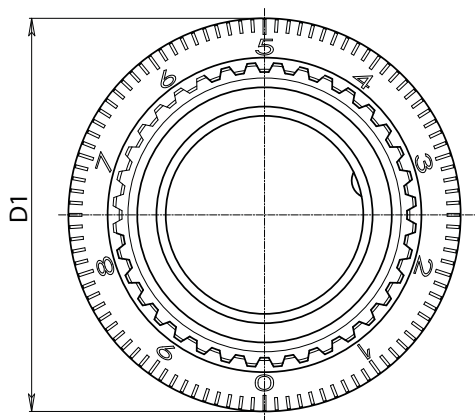
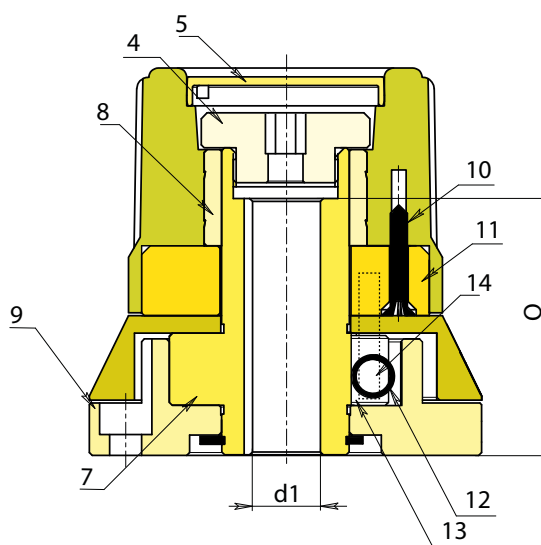
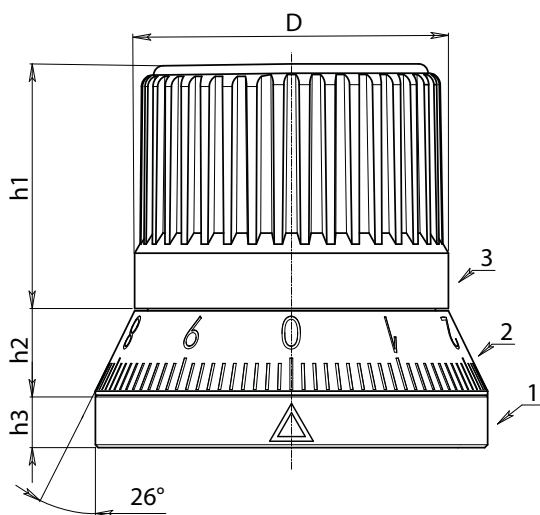
The knob cannot support the weight of the shaft, consequently it does not replace the normal support systems (bearings, flanges, etc.).

The knob cannot be installed if there is a motor drive present.

Reduced depth keyway executed in compliance with a DIN 6885-2

d	bxh	t2	t1	d-t1
12	4x4	1,1	3	9





	Art.	D	D1	h1	h2	h3	R	d2	A	B	d1 H7	Q	Δg
●	N28254.SBZ200101Z1	54	67,5	42	14,5	9	55	5,5	4	13,1	12	44	600

Presumable presence in the stock in %

90% ● 40% ● 5% ●

N290



INDEXED CONTROL KNOB WITH STAINLESS STEEL HANDLE



Material:

5. Reinforced polyamide handle. Resistant to oils and greases (M138-80).
1. Turned fixing cap in stainless steel (Aisi 303) with hexagon for key.
2. Turned knob body in stainless steel (Aisi 303) with 60-position tothing (6° indexing).
3. Stainless steel spring (Aisi 302).
4. Turned fixing base in stainless steel (Aisi 303) with 60-position tothing.
6. Fastening snap ring in stainless steel, (Aisi 420) DIN 471.
7. Turned handle holder stem in stainless steel, (Aisi 303).
8. Turned bush with hole and key to connect to the shaft, in stainless steel (Aisi 303) and 60-position tothing.

Surface and Colour:

5. Black Satin (RAL 9011).
- 1-2-4-7-8. Natural, turned with low roughness.

Fastening to the machine:

First of all, the knob must be dismantled, unscrewing the cap (1) and removing the spring and knob body. Then secure the base (4) to the equipment by means of the three M5 countersunk head screws UNI 5933 (not supplied), after first inserting the shaft in hole d1 and then inserting the key. Then re-assemble the knob body (2), the spring (3) and tighten everything through cap (1).

Operation:

By lifting the knob body (2) through the handle (5), the tothing on the base (4) is released but remains engaged with the tothing on the insert (8). By rotating the body, the insert is also dragged. The insert is keyed to the shaft of the equipment, hence it rotates it. By releasing once again the knob body, the tothing is locked again on the insert and base, thus blocking any possible movement of the insert and therefore the shaft.

The tothing features 60 teeth, hence a 6° pitch.

SPECIAL REQUESTS:

- Upon request and for special quantities the knob can be supplied in different materials.
- Upon request and for special quantities a graduated scale can be engraved on the cylindrical side of the knob body.

	Art.	D	h	h1	h2	R	d	L	d2
●	N29052.IND14CIN	52	6	37,5	5	111	25,5	80	5,4

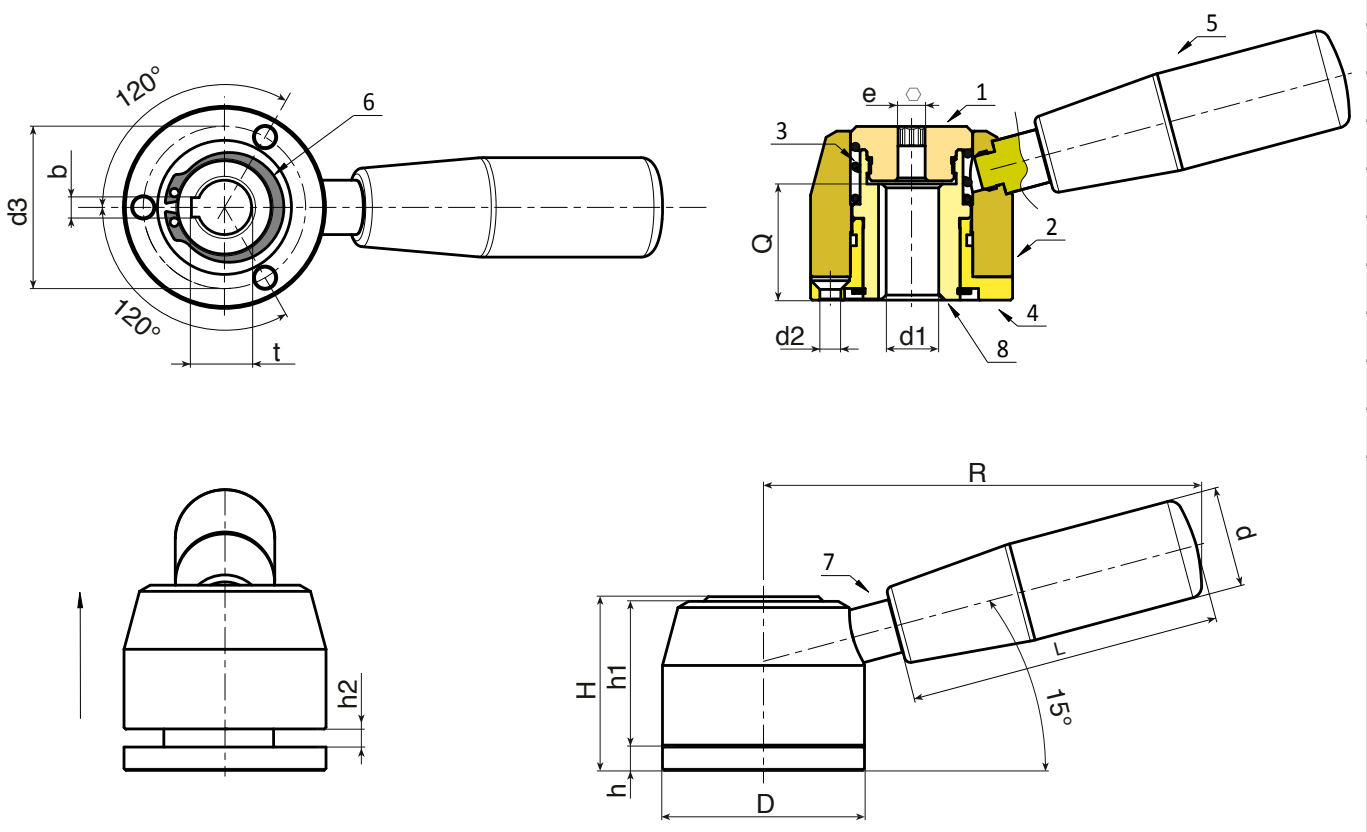
+135°
-20°

Aisi
303

PA6
+G.F.

UL94
HB

RoHS
COMPLIANT



e	d3	t	b H9	d1 H7	Q	⚖ g
5	41,8	15,5	5	14	30	680

Presumable presence in the stock in %
 90% ● 40% ● 5% ●

N

N246



KNURLED CONTROL KNOB WITH SMOOTH BORED INSERT

Material:

Reinforced and polyamide.
Oils and greases resistant.

Surface:

Satin.

Colour:

Black (RAL 9011).

Central Cap:

Grey polyamide (RAL 7035 cod. 13).

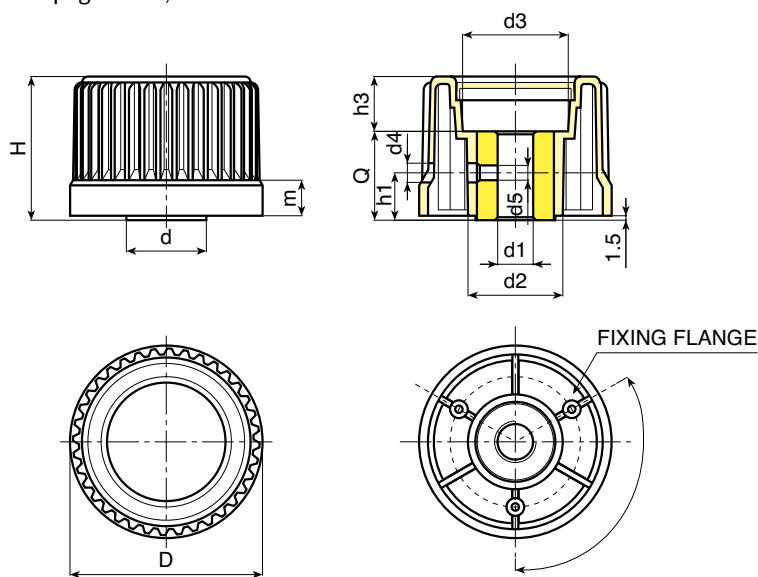
Main Insert:

Zinc plated steel insert with smooth right through-hole (H10 tolerance).

(*) Fixing NFLAN flange by side (accessory).

SPECIAL REQUESTS:

- It's possible to supply the inserts with d1 bore by customer design, on request and for quantities.
- It's possible to supply the inserts in different material and treatment-finishes, on request and for quantities.
- It's possible to supply the products with colours as shown in the table at page N-25, on request and for quantities.



Art.	D	H	m	d	d2	d3	d4	d5	h1	h3	Dm	d1 H10	Q	g
N24630.TD060113 (*)	30	32	13	20	20	17	5,5	M05	16	6	12	06	26	78
N24630.TD080113 (*)	30	32	13	20	20	17	6,5	M06	16	6	12	08	26	77
N24643.TD080113	43	38	14	23	28	23	5,5	M05	16	14	12	08	24	84
N24654.TD080113	54	56	14	27	32	30	5,5	M05	16	14	14	08	30	152
N24654.TD120113	54	56	14	27	32	30	6,5	M06	16	14	14	12	30	147
N24665.TD080113	65	49	14	27	32	36	5,5	M05	16	19	16	08	30	175
N24665.TD120113	65	49	14	27	32	36	6,5	M06	16	19	16	12	30	165
N24665.TD140113	65	49	14	27	32	36	6,5	M06	16	19	16	14	30	160
N24678.TD080113	78	56	15	31	36	50	6,5	M06	18	14	18	08	32	266

Attention: bore d1 (H10 tolerance) could be produced by request, with 100 pieces minimum.

Dm = It's possible to increase the hole, by boring, until Dm (enlarge).

N248



KNURLED CONTROL KNOB WITH THREADED BORE INSERT

Material:

Reinforced and polyamide.
Oils and greases resistant.

Surface:

Satin.

Colour:

Black (RAL 9011).

Central Cap:

Grey polyamide (RAL 7035 cod. 13).

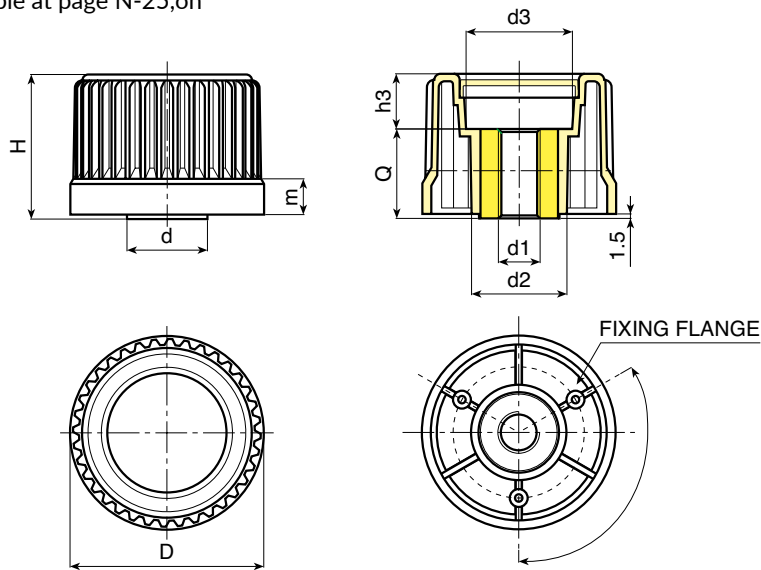
Main Insert:

Zinc plated steel insert with threaded right through-hole (6H tolerance).

(*) Fixing NFLAN flange by side (accessory).

SPECIAL REQUESTS:

- It's possible to supply the inserts with d1 bore by customer design, on request and for quantities.
- It's possible to supply the inserts in different material and treatment-finishes, on request and for quantities.
- It's possible to supply the products with colours as shown in the table at page N-25, on request and for quantities.



Art.	D	H	m	d	d2	d3	h1	h3	d1 6H	Q	g
N24830.TM..01 (*)	30	32	13	20	20	17	16	6	A.R.	26	77
N24843.TM..01	43	38	14	23	28	23	16	14	A.R.	24	84
N24854.TM..01	54	56	14	27	32	30	16	14	A.R.	30	152
N24865.TM..01	65	49	14	27	32	36	16	19	A.R.	30	175
N24878.TM..01	78	56	15	31	36	50	16	14	A.R.	32	266

Threaded holes already available for N248-30 : M08-M10-M12

Threaded holes already available for N248-43 : M08-M10-M12

Threaded holes already available for N248-54 : M08-M10-M12

Threaded holes already available for N248-65 : M10-M12-M14

Threaded holes already available for N248-78 : M12-M14-M16

A.R. = Only by customers request. Minimum 100 pieces.

Presumable presence in the stock in %
90% 40% 5%

N245



KNURLED CONTROL KNOB WITH THREADED STUD

Material:

Reinforced and polyamide.
Oils and greases resistant.

Surface:

Satin.

Colour:

Black (RAL 9011).

Central Cap:

Grey polyamide (RAL 7035 cod. 13).

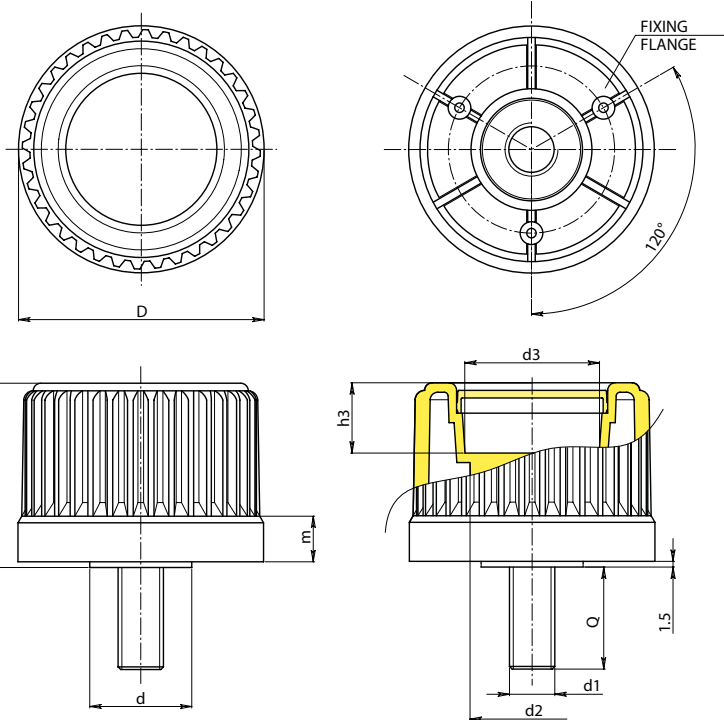
Main Insert:

Zinc plated steel threaded stud (tolerance 6g).

(*) Fixing NFLAN flange by side (accessory).

SPECIAL REQUESTS:

- It is possible to supply inserts in different lengths or by special design, on request and for quantities.
- It is possible to supply inserts in different materials, on request and for quantities.
- It's possible to supply the products with colours as shown in the table at page N-25, on request and for quantities.



Art.	D	H	m	d	d2	d3	h1	h3	LM	d1 6g	Q	⚖ g
● N24530.TM10X..0113 (*)	30	32	13	20	20	17	16	6	80	M10	A.R.	-
● N24530.TM12X..0113 (*)	30	32	13	20	20	17	16	6	80	M12	A.R.	-
● N24543.TM10X..0113	43	38	14	23	28	23	16	14	90	M10	A.R.	-
● N24543.TM12X..0113	43	38	14	23	28	23	16	14	90	M12	A.R.	-
● N24554.TM12X..0113	54	56	14	27	32	30	16	14	100	M12	A.R.	-
● N24554.TM14X..0113	54	56	14	27	32	30	16	14	100	M14	A.R.	-
● N24565.TM14X..0113	65	49	14	27	32	36	16	19	120	M14	A.R.	-
● N24565.TM16X..0113	65	49	14	27	32	36	16	19	120	M16	A.R.	-
● N24578.TM14X..0113	78	56	15	31	36	50	16	14	120	M14	A.R.	-
● N24578.TM16X..0113	78	56	15	31	36	50	16	14	120	M16	A.R.	-

Enter the stud length choice in the two .. of the article code. Lengths by request with 250 pieces minimum quantity.

LM = Maximum mouldable length.

A.R. = Only by customers request. Minimum 250 pieces.

FLANGE FOR CONTROL KNOB

Material:

Reinforced and polyamide.
Oils and greases resistant.

Surface:

Satin.

Colour:

Grey (RAL 7035 cod. 13).

Scale:

Pad printed in black colour.

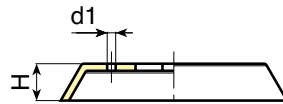
Fixing screws:

N° 3 zinc plated self-tapping screws 2,9x9,5
UNI6954.

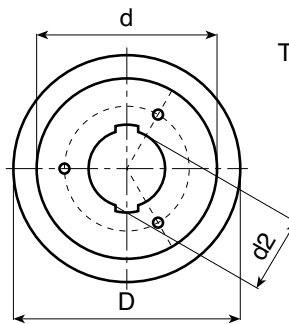


SPECIAL REQUESTS:

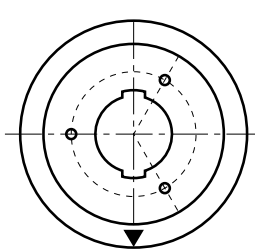
- It's possible to supply the flange on black with white printed scale.
- It's possible to supply customer design printing scale, on request and for quantities.



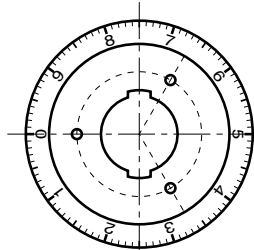
Art. N250



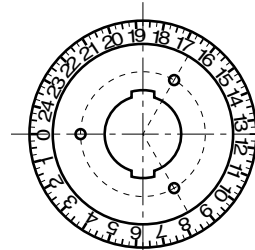
Type: Neutral base



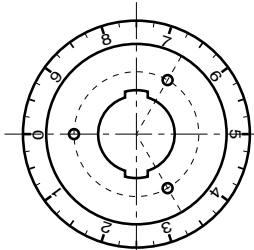
Type:Z1



Type:Z2



Type:Z3



Type:Z4

	Art.	D	H	d/N246/N248	d1	d2	TYPE	g
	NFLAN.T3013	38	7	30	-	20	NEUTRAL	5
	NFLAN.T3013Z1	38	7	30	-	20	Z1 / ARROW INDICATOR	5
	NFLAN.T4313	53	9	43	3	23	NEUTRAL	7
	NFLAN.T4313Z1	53	9	43	3	23	Z1 / ARROW INDICATOR	7
	NFLAN.T5413	66	11	54	3	27	NEUTRAL	13
	NFLAN.T5413Z1	66	11	54	3	27	Z1 / ARROW INDICATOR	13
	NFLAN.T6513	80	13	65	3	27	NEUTRAL	20
	NFLAN.T6513Z1	80	13	65	3	27	Z1 / ARROW INDICATOR	20
	NFLAN.T6513Z2	80	13	65	3	27	Z2/ numbering system 0:9 100 divisions	20
	NFLAN.T6513Z3	80	13	65	3	27	Z3/ numbering system 0:09 40 divisions	20
	NFLAN.T6513Z4	80	13	65	3	27	Z4/ numbering system 0:24 100 divisions	20
	NFLAN.T7813	93	13	78	3	31	NEUTRAL	25
	NFLAN.T7813Z1	93	13	78	3	31	Z1 / ARROW INDICATOR	25

N250



KNURLED KNOB WITH INSERT WITH SMOOTH HOLE AND FLANGE

Flange and knob material:
Reinforced polyamide.
Resistant to oils and greases.

Flange and knob surface:
Satin.

Colour:
Knob: Black (RAL 9011).
Flange/Cap: 01 - Black (RAL 9011).
13 - Grey (RAL 7035).

Cap:
Central cap in polyamide.

Insert:
Zinc plated steel insert with smooth through hole (tolerance hole H10).

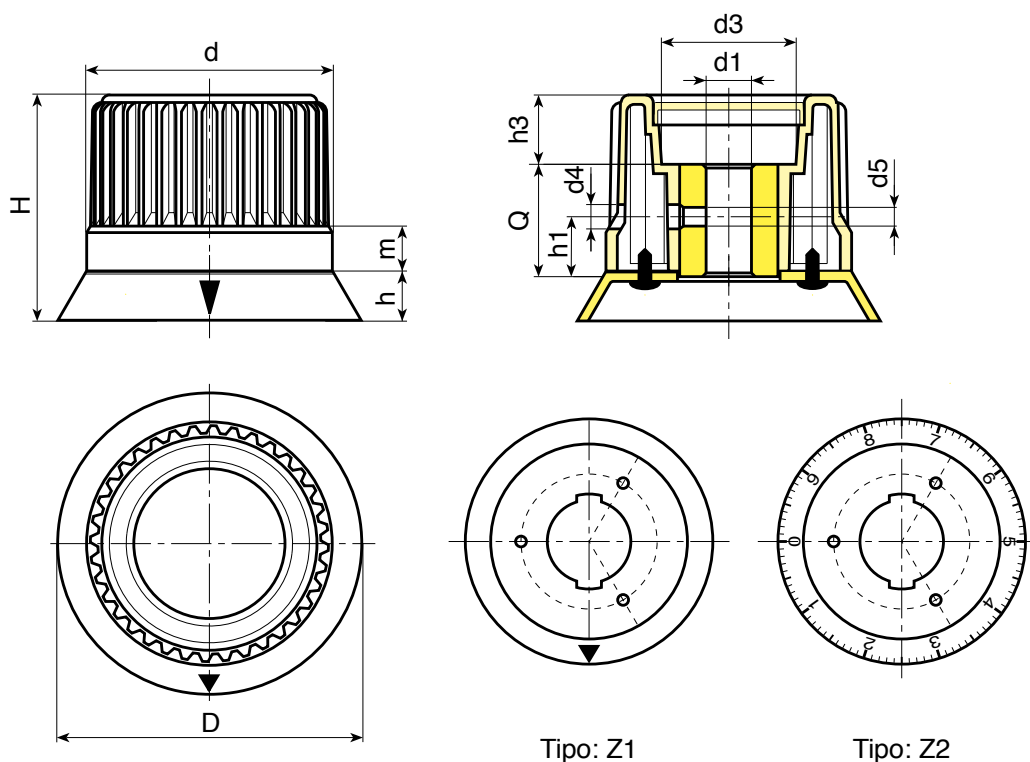
Fixing screws:
Three galvanised self-tapping screws 2.9x9.5 UNI 6954.

Scale:
Black pad-printed on grey flange;
Grey pad-printed on black flange;
For flange with arrow only: version Z1
For flange with numbers from 0 to 9 with 100 graduations: version Z2

N

SPECIAL REQUESTS:

- Upon request and for special quantities inserts can be supplied with custom hole diameter d1.
- Upon request and for special quantities inserts can be supplied in different materials/ith different coatings.
- Upon request and for special quantities available in the colours indicated in the chart on page N-25.





Version with grey (RAL 7035 code no. 13) flange and cap, and black arrow

	Art.	D	H	h	m	d	d3	d4	d5	h1	h3	Dm	d1 H10	Q	⚖ g
●	N25030.TD060113Z1	38	37,5	7	13	30	17	5,5	M05	16	6	12	06	26	85
●	N25043.TD080113Z1	53	45,5	9	14	43	23	5,5	M05	16	14	12	08	24	92
●	N25054.TD080113Z1	66	65,5	11	14	54	30	5,5	M05	16	14	14	08	30	166
●	N25065.TD080113Z1	80	60,5	13	14	65	36	5,5	M05	16	19	16	08	30	186
●	N25078.TD080113Z1	93	67,5	13	15	78	50	6,5	M06	18	14	18	08	32	292

Version with black flange and cap, and grey arrow

	Art.	D	H	h	m	d	d3	d4	d5	h1	h3	Dm	d1 H10	Q	⚖ g
●	N25030.TD0601Z1	38	37,5	7	13	30	17	5,5	M05	16	6	12	06	26	85
●	N25043.TD0801Z1	53	45,5	9	14	43	23	5,5	M05	16	14	12	08	24	92
●	N25054.TD0801Z1	66	65,5	11	14	54	30	5,5	M05	16	14	14	08	30	166
●	N25065.TD0801Z1	80	60,5	13	14	65	36	5,5	M05	16	19	16	08	30	186
●	N25078.TD0801Z1	93	67,5	13	15	78	50	6,5	M06	18	14	18	08	32	292

Version with grey (RAL 7035 code no. 13) flange and cap, and black graduated scale

	Art.	D	H	h	m	d	d3	d4	d5	h1	h3	Dm	d1 H10	Q	⚖ g
●	N25030.TD060113Z2	38	37,5	7	13	30	17	5,5	M05	16	6	12	06	26	85
●	N25043.TD080113Z2	53	45,5	9	14	43	23	5,5	M05	16	14	12	08	24	92
●	N25054.TD080113Z2	66	65,5	11	14	54	30	5,5	M05	16	14	14	08	30	166
●	N25065.TD080113Z2	80	60,5	13	14	65	36	5,5	M05	16	19	16	08	30	186
●	N25078.TD080113Z2	93	67,5	13	15	78	50	6,5	M06	18	14	18	08	32	292

Version with black flange and cap, and grey graduated scale












	Art.	D	H	h	m	d	d3	d4	d5	h1	h3	Dm	d1 H10	Q	⚖ g
●	N25030.TD0601Z2	38	37,5	7	13	30	17	5,5	M05	16	6	12	06	26	85
●	N25043.TD0801Z2	53	45,5	9	14	43	23	5,5	M05	16	14	12	08	24	92
●	N25054.TD0801Z2	66	65,5	11	14	54	30	5,5	M05	16	14	14	08	30	166
●	N25065.TD0801Z2	80	60,5	13	14	65	36	5,5	M05	16	19	16	08	30	186
●	N25078.TD0801Z2	93	67,5	13	15	78	50	6,5	M06	18	14	18	08	32	292

Attention: bore d1 (H10 tolerance) could be produced by request, with 100 pieces minimum.

Dm = It's possible to increase the hole, by boring, until Dm (enlarge).

COLOUR CHART

RAL COLOURS CODING

Colour		RAL	Cod.
Black		9011	01
Orange		2004	02
Orange		2011	03
White		9010	04
Blue		5015	07
Yellow		1007	09
Yellow		1021	10
Grey		7024	12
Grey		7035	13
Red		3000	16
Green		6024	17

N

AUTHORISED RESELLER

BOTECO Srl

www.boteco.it

36010 ZANE' (VI) - ITALY

Via L. Pettinà 16 (side street of Via Cuso)

Switchboard Tel.:+39-0445-316411 - Fax:+39-0445-316400

Sales Fax:+39-0445-316401 mail: commerciale@boteco.it

Administration Fax:+39-0445-316402 mail: amministrazione@boteco.it

Technical Fax:+39-0445-316404 mail: tecnico@boteco.it

Certified Mail Box: boteco@pec.botecopec.it

