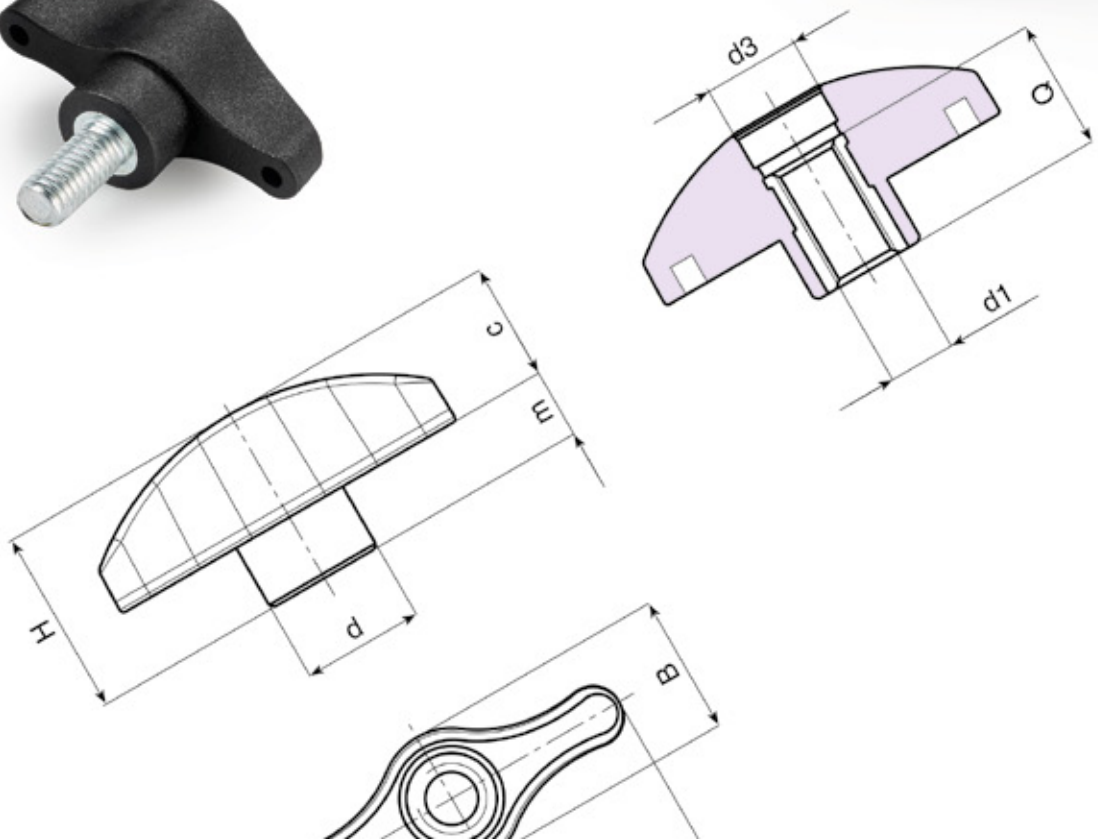




BOTECO[®]

Family L

WINGNUTS AND HANDLES



L270

T-HANDLE WITH FEMALE THREADED INSERT

Material:
Reinforced polyamide.
Oils and greases resistant.

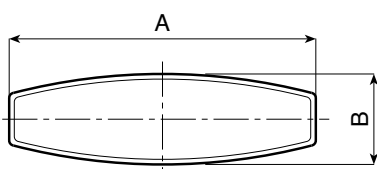
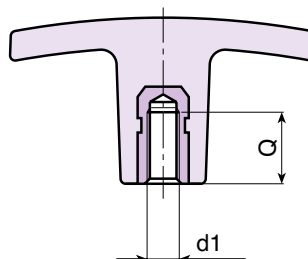
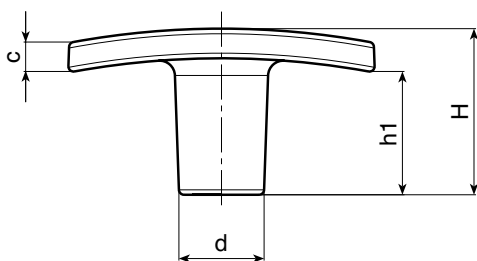
Surface:
Satin.

Colour:
Black (RAL 9011).


Main Insert:
Brass blind threaded bush (tolerance 6H).

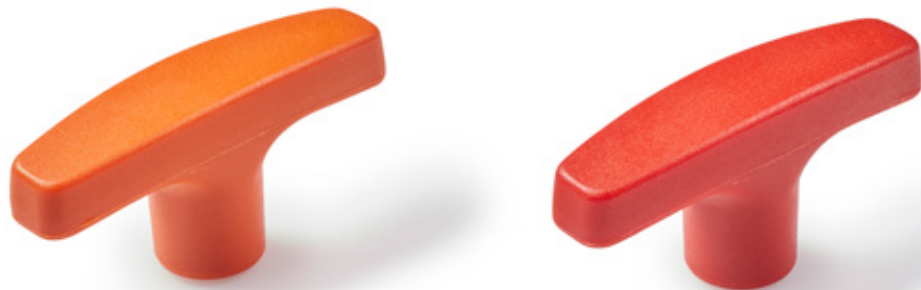
SPECIAL REQUEST:

- It is possible to supply the inserts in different materials, on request and for quantities.
- It is possible to supply colours as shown in the table at pag. L-29, on request and for quantities.



Version L270-01 colour black (RAL 9001 code 01)

	Art.	A	B	H	h1	c	d	d1 6H	Q	Δ g	F1 (N)
●	L27050.TM0501	50	15	24	17	5	14	M05	12	13	4100
●	L27050.TM0601	50	15	24	17	5	14	M06	10	11	4100
●	L27050.TM0801	50	15	24	17	5	14	M08	14	12	4100
●	L27060.TM0501	60	18	33	24	6	16,5	M05	12	19	5800
●	L27060.TM0601	60	18	33	24	6	16,5	M06	10	16,5	5800
●	L27060.TM0801	60	18	33	24	6	16,5	M08	14	17,5	5800
●	L27060.TM1001	60	18	33	24	6	16,5	M10	21	21	5800
●	L27072.TM0601	72	19	34	20	10	18	M06	15	25	6500
●	L27072.TM0801	72	19	34	20	10	18	M08	20	28	6500
●	L27072.TM1001	72	19	34	20	10	18	M10	21	30	6500
●	L27072.TM1201	72	19	34	20	10	18	M12	17	30	6500



Version L270-02, **Orange** color (RAL 2004 cod. 02)

	Art.	A	B	H	h1	c	d	d1 6H	Q	g	F1 (N)
●	L27050.TM0602	50	15	24	17	5	14	M06	10	11	4100
●	L27060.TM0802	60	18	33	24	6	16,5	M08	14	17,5	5800
●	L27072.TM1002	72	19	34	20	10	18	M10	21	30	6500

Version L270-16, **red** color (RAL 3000 cod. 16)

	Art.	A	B	H	h1	c	d	d1 6H	Q	g	F1 (N)
●	L27050.TM0516	50	15	24	17	5	14	M05	12	13	4100
●	L27050.TM0616	50	15	24	17	5	14	M06	10	11	4100
●	L27060.TM0816	60	18	33	24	6	16,5	M08	14	17,5	5800
●	L27072.TM1016	72	19	34	20	10	18	M10	21	30	6500

L270 CIN



INOX

T-HANDLE WITH FEMALE STAINLESS STEEL THREADED INSERT

Material:
Reinforced polyamide.
Oils and greases resistant.

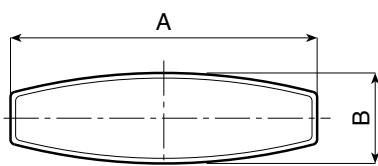
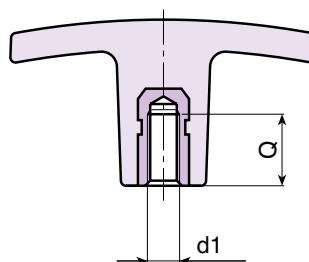
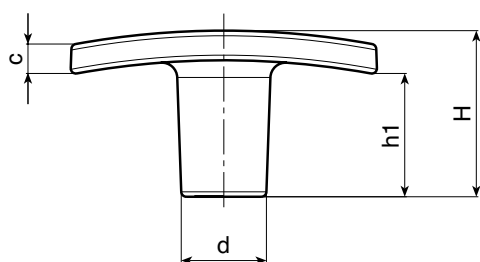
Surface:
Satin.

Colour:
Black (RAL 9011).

Main Insert:
Stainless steel blind threaded bush (AISI 303).
(tolerance 6H).

SPECIAL REQUEST:

- It is possible to supply colours as shown in the table at pag. L-29, on request and for quantities.



●	Art.	A	B	H	h1	c	d	d1 6H	Q	⚖ g	F1 (N)
●	L27050.TM0501CIN	50	15	24	17	5	14	M05	9	14	4100
●	L27050.TM0601CIN	50	15	24	17	5	14	M06	9	14	4100
●	L27050.TM0801CIN	50	15	24	17	5	14	M08	12	16	4100
●	L27060.TM0601CIN	60	18	33	24	6	16,5	M06	9	20	5800
●	L27060.TM0801CIN	60	18	33	24	6	16,5	M08	12	21	5800
●	L27060.TM1001CIN	60	18	33	24	6	16,5	M10	18	24	5800
●	L27072.TM0801CIN	72	19	34	20	10	18	M08	19	32	6500
●	L27072.TM1001CIN	72	19	34	20	10	18	M10	18	33	6500
●	L27072.TM1201CIN	72	19	34	20	10	18	M12	15	34	6500

L271



T-HANDLE WITH THREADED STUD

Material:
Reinforced polyamide.
Oils and greases resistant.

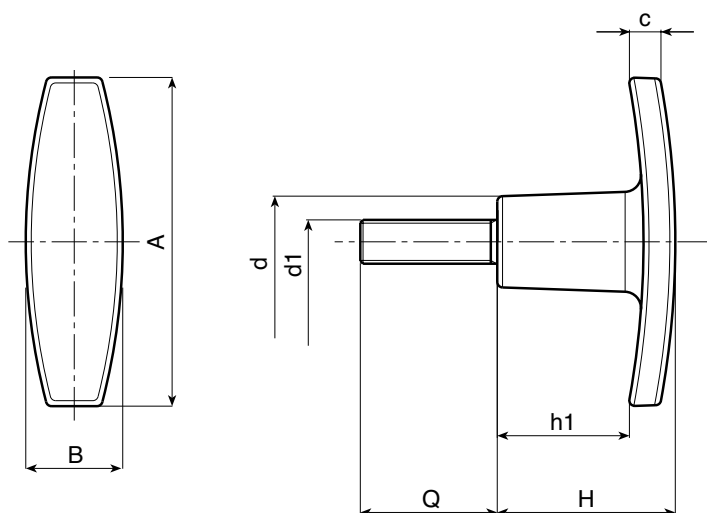
Surface:
Satin.

Colour:
Black (RAL 9011).

Main Insert:
Zinc plated steel threaded stud (tolerance 6g).

SPECIAL REQUESTS:

- It is possible to supply inserts in different lengths or by special design, on request and for quantities.
- It is possible to supply inserts in different materials, on request and for quantities.
- It is possible to supply colours as shown in the table on page L-29, on request and for quantities.



Art.	A	B	H	h1	c	d	LM	d1 6g	Q	g	F1 (N)
L27150.TM05X..01	50	15	24	17	5	14	30	M05	20-30	13-14	4100
L27150.TM06X..01	50	15	24	17	5	14	30	M06	15-20-30-40	14,5-15-16,5-18	4100
L27160.TM05X..01	60	18	33	24	6	16,5	30	M05	15-20-30	20-21	4100
L27160.TM06X..01	60	18	33	24	6	16,5	30	M06	20-30	23-25	5800
L27160.TM08X..01	60	18	33	24	6	16,5	30	M08	20-30-40	28-31-34	5800
L27160.TM10X..01	60	18	33	24	6	16,5	30	M10	20-30-40	30-35	5800
L27172.TM06X..01	72	19	34	20	10	18	80	M06	20-30-40	30-32-34	6500
L27172.TM08X..01	72	19	34	20	10	18	80	M08	20-30-40	39-42-45	6500
L27172.TM10X..01	72	19	34	20	10	18	80	M10	30-40	56-61	6500
L27172.TM12X..01	72	19	34	20	10	18	80	M12	30-40-50	58-64-71	6500

Enter the stud length choice in the two .. of the article code. Lengths by request with 250 pieces minimum quantity.

LM = Maximum mouldable length.

Presumable presence in the stock in %
 90% ● 40% ● 5% ●

L271 CIN



T-HANDLE WITH THREADED STAINLESS STEEL STUD

Material:

Reinforced polyamide.
Oils and greases resistant.

Surface:

Satin.

Colour:

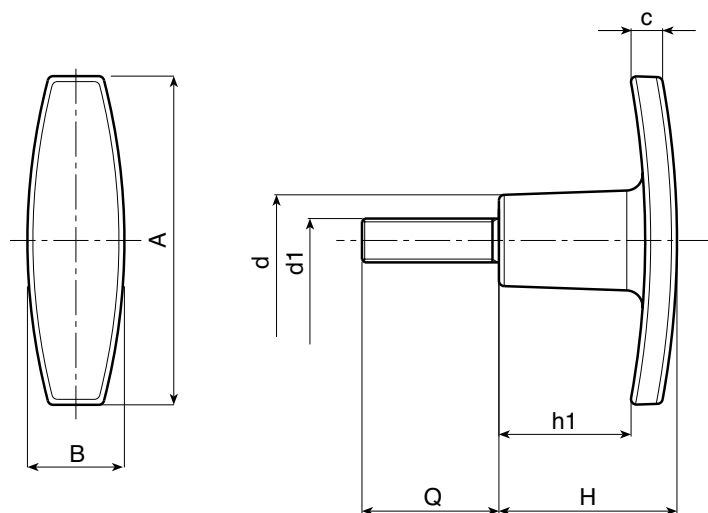
Black (RAL 9011).

Main Insert:

Stainless steel threaded stud (AISI 303).
(tolerance 6g).

SPECIAL REQUESTS:

- It is possible to supply inserts in different lengths or by special design, on request and for quantities.
- It is possible to supply colours as shown in the table on page L-29, on request and for quantities.



NSI	Art.	A	B	H	h1	c	d	LM	d1 6g	Q	g	F1 (N)
●	L27150.TM05X..01CIN	50	15	24	17	5	14	30	M05	A.R.	-	4100
●	L27150.TM06X..01CIN	50	15	24	17	5	14	30	M06	A.R.	-	4100
●	L27160.TM06X..01CIN	60	18	33	24	6	16,5	30	M06	A.R.	-	5800
●	L27160.TM08X..01CIN	60	18	33	24	6	16,5	30	M08	A.R.	-	5800
●	L27172.TM08X..01CIN	72	19	34	20	10	18	80	M08	A.R.	-	6500
●	L27172.TM10X..01CIN	72	19	34	20	10	18	80	M10	A.R.	-	6500
●	L27172.TM12X..01CIN	72	19	34	20	10	18	80	M12	A.R.	-	6500

Enter the stud length choice in the two .. of the article code. Lengths by request with 300 pieces minimum quantity.

LM = Maximum mouldable length.

A.R. = by request.

L272



T-HANDLE WITH PLASTIC THREADED HOLE

Material:
Reinforced polyamide.
Oils and greases resistant.

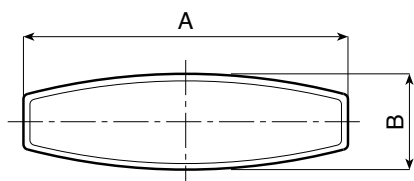
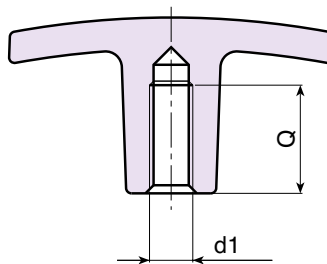
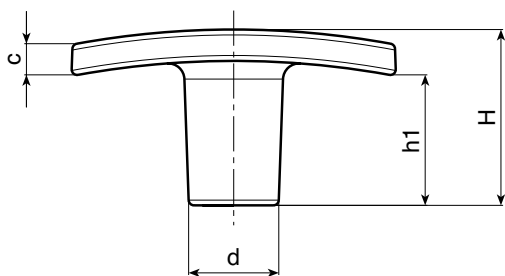
Surface:
Satin.

Colour:
Black (RAL 9011).

Hole:
Female threaded blind hole obtained by moulding the plastic. (tolerance in not applicable).

SPECIAL REQUEST:

- It is possible to supply colours as shown in the table at pag. L-29, on request and for quantities.



Art.	A	B	H	h1	c	d	d1	Q	g	F1 (N)
L27250.TM0501	50	15	24	17	5	14	M05	20	8	2800
L27250.TM0601	50	15	24	17	5	14	M06	20	8	2800
L27260.TM0501	60	18	33	24	6	16,5	M05	19	14	3000
L27260.TM0601	60	18	33	24	6	16,5	M06	19	14	3000
L27260.TM0801	60	18	33	24	6	17	M08	19	14	3000
L27260.TM1001	60	18	33	24	6	18	M10	19	13	3000
L27272.TM0801	72	19	34	20	10	18	M08	21	20	4600
L27272.TM1001	72	19	34	20	10	18	M10	21	20	4600
L27272.TM1201	72	19	34	20	10	18	M12	20	19	4600

L273



T-HANDLE WITH SMOOTH HOLE INSERT

Material:
Reinforced polyamide.
Oils and greases resistant.

Surface:
Satin.

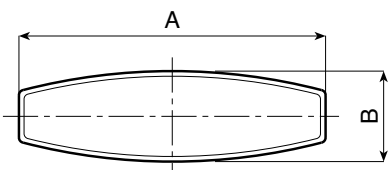
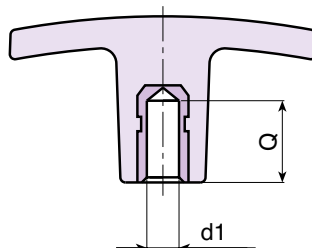
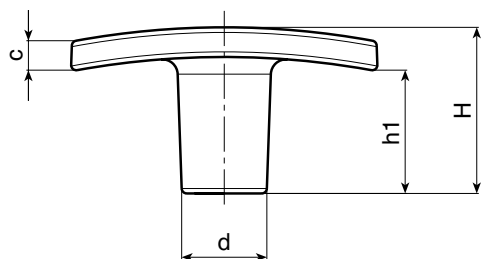
Colour:
Black (RAL 9011).

Main Insert:
Brass smooth blind bored bush (tolerance bore H7)
ATTENTION: the bore cannot be enlarged.

(*) Zinc plated steel blind bored bush (tolerance bore H10).

SPECIAL REQUESTS:

- It is possible to supply the inserts with different materials, on request and for quantities.
- It is possible to supply colours as shown in the table on page L-29, on request and for quantities.



	Art.	A	B	H	h1	c	d	d1 H7	Q	Δ g	F1 (N)
●	L27350.TD0601CON	50	15	24	17	5	14	06	16	12	4100
●	L27360.TD0601CON	60	18	33	24	6	16,5	06	16	19	5800
●	L27360.TD0801CON	60	18	33	24	6	16,5	08	15	21	5800
●	L27372.TD0801CON	72	19	34	20	10	18	08	15	28	6500
●	L27372.TD1001	72	19	34	20	10	18	(*) 10	17	30	6500

WINGNUTS "EUROMODEL"



BOTECO[®]
EUROMODEL



L803



“EUROMODEL” WINGNUT WITH THREADED THROUGH INSERT

Material:
Reinforced polyamide.
Oils and greases resistant.

Surface:
Satin.

Colour:
Black (RAL 9011).

Central Cap:
Grey PA6 (RAL 7035 cod. 13).

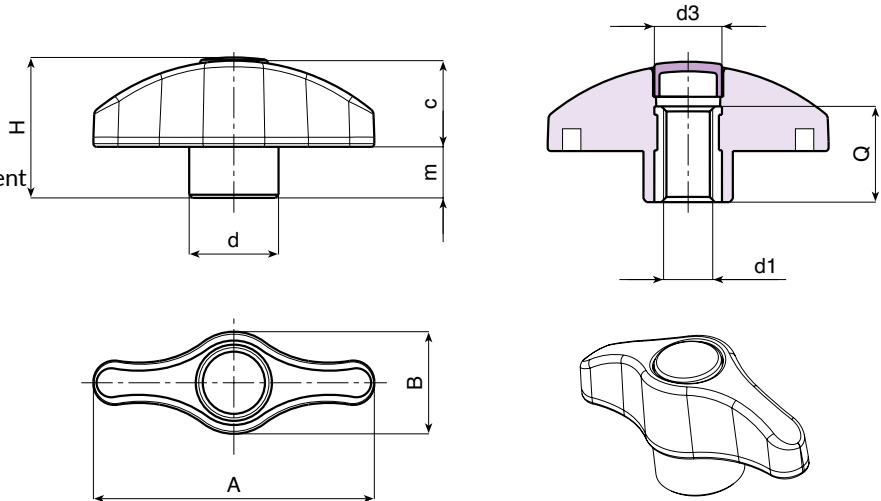
Alternative Cap Colour:
Orange (RAL 2004 cod. 02).
Blue (RAL 5015 cod. 07).
Yellow (RAL 1021 cod. 10).
Red (RAL 3000 cod. 16).
Green (RAL 6024 cod. 17).
Black (RAL 9011 cod. 01).



Main Insert:
L803: Brass right through threaded bush. (thread tolerance 6H).
L803PIN: Stainless steel (AISI 303) right through threaded bush. (thread tolerance 6H).

SPECIAL REQUESTS:

- It is possible to supply the inserts in different materials, on request and for quantities.
- It is possible to supply the wingnuts with colours as shown in the table at page L-29 on request and for quantities.



Version L803: Standard brass insert

	Art.	A	B	H	m	c	d	d3	d1 6H	Q	⚖️ g
●	L80344.TM050113	44	16	22	8	14	14	10	M05	15	10
●	L80344.TM060113	44	16	22	8	14	14	10	M06	15	10
●	L80344.TM080113	44	16	22	8	14	14	10	M08	15	11
●	L80352.TM050113	52	19	26	9,5	16,5	17	13	M05	18	15
●	L80352.TM060113	52	19	26	9,5	16,5	17	13	M06	18	15
●	L80352.TM080113	52	19	26	9,5	16,5	17	13	M08	18	16
●	L80352.TM100113	52	19	26	9,5	16,5	17	13	M10	18	16
●	L80367.TM060113	67	24	32,5	11	21,5	21	16	M06	18	26
●	L80367.TM080113	67	24	32,5	11	21,5	21	16	M08	18	26
●	L80367.TM100113	67	24	32,5	11	21,5	21	16	M10	18	27
●	L80367.TM120113	67	24	32,5	11	21,5	21	16	M12	18	27

Version L803 PIN: Stainless steel insert

	Art.	A	B	H	m	c	d	d3	d1 6H	Q	⚖️ g
●	L80344.TM060113PIN	44	16	22	8	14	14	10	M06	15	10
●	L80352.TM080113PIN	52	19	26	9,5	16,5	17	13	M08	18	16
●	L80367.TM100113PIN	67	24	32,5	11	21,5	21	16	M10	18	27

INOX

L806



“EUROMODEL” WINGNUT WITH THREADED THROUGH INSERT WITHOUT CAP

Material:
Reinforced polyamide.
Oils and greases resistant.

Surface:
Satin.

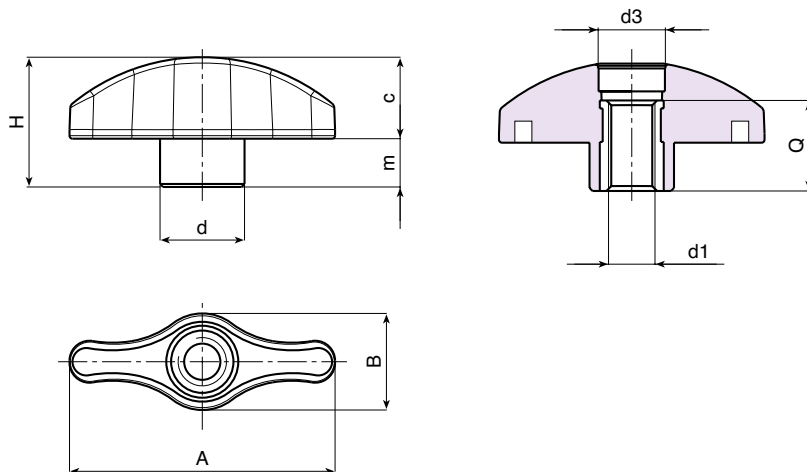
Colour:
Black (RAL 9011).

Main Insert:
L806: Brass right through threaded bush. (thread tolerance 6H).
L806PIN: Stainless steel (AISI 303) right through hreaded bush. (thread tolerance 6H).



SPECIAL REQUESTS:

- It is possible to supply the inserts in different materials, on request and for quantities.
- It is possible to supply the wingnuts with colours as shown in the table at page L-29, on request and for quantities.



Version L806: Standard brass insert

Art.	A	B	H	m	c	d	d3	d1 6H	Q	⚖ g
L80644.TM0501	44	16	21,5	8	14	14	10	M05	15	9
L80644.TM0601	44	16	21,5	8	14	14	10	M06	15	9
L80644.TM0801	44	16	21,5	8	14	14	10	M08	15	10
L80652.TM0501	52	19	25,5	9,5	16,5	17	13	M05	18	14
L80652.TM0601	52	19	25,5	9,5	16,5	17	13	M06	18	15
L80652.TM0801	52	19	25,5	9,5	16,5	17	13	M08	18	16
L80652.TM1001	52	19	25,5	9,5	16,5	17	13	M10	18	16
L80667.TM0601	67	24	32	11	21,5	21	16	M06	18	25
L80667.TM0801	67	24	32	11	21,5	21	16	M08	18	25
L80667.TM1001	67	24	32	11	21,5	21	16	M10	18	26
L80667.TM1201	67	24	32	11	21,5	21	16	M12	18	26

Version L806 PIN: Stainless steel insert

Art.	A	B	H	m	c	d	d3	d1 6H	Q	⚖ g
L80644.TM0601PIN	44	16	21,5	8	14	14	10	M06	15	9
L80652.TM0801PIN	52	19	25,5	9,5	16,5	17	13	M08	18	16
L80667.TM1001PIN	67	24	32	11	21,5	21	16	M10	18	26

INOX

Presumable presence in the stock in %
 90% ● 40% ● 5% ●

L804



“EUROMODEL” WINGNUT WITH THREADED STUD

Material:
Reinforced polyamide.
Oils and greases resistant.

Surface:
Satin.

Colour:
Black (RAL 9011).

Central Cap:
Grey PA6 (RAL 7035 cod. 13).

Alternative Cap Colour:
Orange (RAL 2004 cod. 02).
Blue (RAL 5015 cod. 07).
Yellow (RAL 1021 cod. 10).
Red (RAL 3000 cod. 16).
Green (RAL 6024 cod. 17).
Black (RAL 9011 cod. 01).

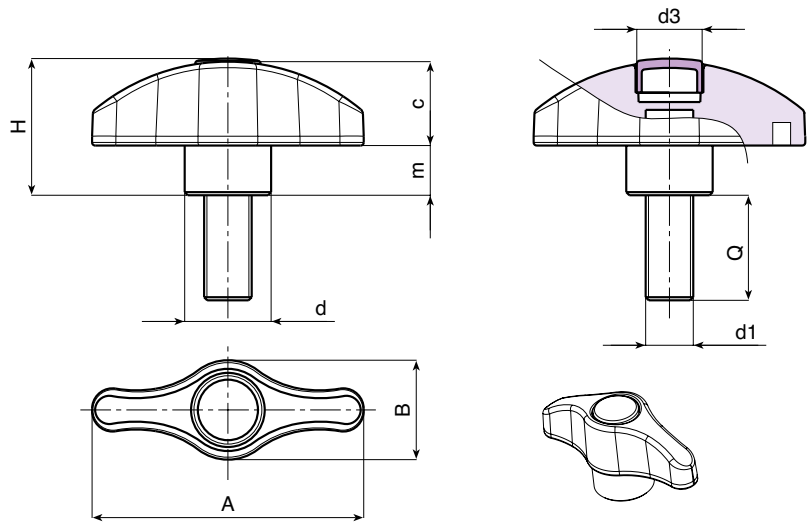


Main Insert:
L804: Zinc plated steel threaded stud.
(thread tolerance 6g).
L804CIN: Stainless steel (AISI 303) threaded stud.
(thread tolerance 6H).

Maximum mouldable length (LM):
L804-44: 80 mm
L804-52: 80 mm
L804-67: 100 mm

SPECIAL REQUESTS:

- It is possible to supply the inserts with different lengths, on request and for quantities.
- It is possible to supply the inserts in different materials, on request and for quantities.
- It is possible to supply the wingnuts with colours as shown in the table at page L-29, on request and for quantities.



Version L804: Zinc plated steel threaded stud

Art.	A	B	H	m	c	d	d3	d1	Q	g
L80444.TM05X..0113	44	16	22	8	14	14	10	M05	16-20-25-30-40-50	11-11,5-12-12,5-13,5-14,5
L80444.TM06X..0113	44	16	22	8	14	14	10	M06	16-20-25-30-40-50	12-13-14-15-16-17
L80444.TM08X..0113	44	16	22	8	14	14	10	M08	16-20-25-30-40-50	19-20,5-22-23,5-26-29
L80452.TM06X..0113	52	19	26	9,5	16,5	17	13	M06	16-20-25-30-40-50	17-18-19-20-21-22
L80452.TM08X..0113	52	19	26	9,5	16,5	17	13	M08	16-20-25-30-40-50	24-25,5-27-28,5-31-34
L80452.TM10X..0113	52	19	26	9,5	16,5	17	13	M10	20-25-30-40-50	32-35-38-42-47
L80467.TM06X..0113	67	24	32,5	11	21,5	21	16	M06	A.R.	-
L80467.TM08X..0113	67	24	32,5	11	21,5	21	16	M08	16-20-25-30-40-50	32-33,5-35-36,5- 39,5-42,5
L80467.TM10X..0113	67	24	32,5	11	21,5	21	16	M10	30-50	44,5-54,5
L80467.TM12X..0113	67	24	32,5	11	21,5	21	16	M12	30-40	52-59

A.R. = by request.

Enter the stud length choice in the two .. of the article code. Lengths by request with 250 pieces minimum quantity.

Version L804 CIN: Stainless steel threaded stud

Art.	A	B	H	m	c	d	d3	d1	Q	g
L80444.TM06X..0113CIN	44	16	22	8	14	14	10	M06	A.R.	16
L80452.TM08X..0113CIN	52	19	26	9,5	16,5	17	13	M08	A.R.	31
L80467.TM10X..0113CIN	67	24	32,5	11	21,5	21	16	M10	A.R.	49,5

Enter the stud length choice in the two .. of the article code. Lengths by request with 250 pieces minimum quantity.

LM = Maximum mouldable length.

A.R. = by request.

L807



“EUROMODEL” WINGNUT WITH THREADED STUD WITHOUT CAP

Material:
Reinforced polyamide.
Oils and greases resistant.

Surface:
Satin.

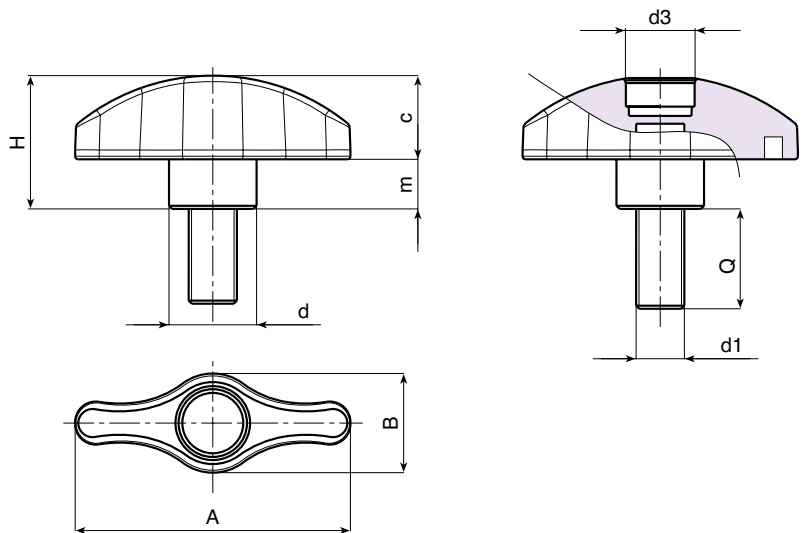
Colour:
Black (RAL 9011).

Main Insert:
L807: Zinc plated steel threaded stud.
(thread tolerance 6g).
L807CIN: Stainless steel (AISI 303)
threaded stud. (thread tolerance 6g).

Maximum mouldable length (LM):
L807-44: 80 mm
L807-52: 80 mm
L807-67: 100 mm

SPECIAL REQUESTS:

- It is possible to supply the inserts with different lengths, on request and for quantities.
- It is possible to supply the inserts in different materials, on request and for quantities.
- It is possible to supply the wingnuts with colours as shown in the table at page L-29, on request and for quantities.



Version L807: Zinc plated steel threaded stud

Art.	A	B	H	m	c	d	d3	d1	Q	g
L80744.TM05X..01	44	16	21,5	8	14	14	10	M05	16-20-25-30-40-50	10-10,5-11-11,5-12,5-13,5
L80744.TM06X..01	44	16	21,5	8	14	14	10	M06	16-20-25-30-40-50	11-12-13-14-15-16
L80744.TM08X..01	44	16	21,5	8	14	14	10	M08	16-20-25-30-40-50	18-19,5-21-22,5-25-28
L80752.TM06X..01	52	19	25,5	9,5	16,5	17	13	M06	16-20-25-30-40-50	16-17-18-19-20-21
L80752.TM08X..01	52	19	25,5	9,5	16,5	17	13	M08	16-20-25-30-40-50	23-24,5-26-27,5-30-33
L80752.TM10X..01	52	19	25,5	9,5	16,5	17	13	M10	20-25-30-40-50	31-34-37-41-46
L80767.TM06X..01	67	24	32	11	21,5	21	16	M06	A.R.	-
L80767.TM08X..01	67	24	32	11	21,5	21	16	M08	16-20-25-30-40-50	31-32,5-34-35,5-38,5-41,5
L80767.TM10X..01	67	24	32	11	21,5	21	16	M10	30-50	43,5-53,5
L80767.TM12X..01	67	24	32	11	21,5	21	16	M12	30-40	51-58

Enter the stud length choice in the two .. of the article code. Lengths by request with 250 pieces minimum quantity.

A.R. = by request.

Version L807 CIN: Stainless steel threaded stud

Art.	A	B	H	m	c	d	d3	d1	Q	g
L80744.TM06X..01CIN	44	16	22	8	14	14	10	M06	A.R.	15
L80752.TM08X..01CIN	52	19	26	9,5	16,5	17	13	M08	A.R.	30
L80767.TM10X..01CIN	67	24	32,5	11	21,5	21	16	M10	A.R.	48,5

Enter the stud length choice in the two .. of the article code. Lengths by request with 250 pieces minimum quantity.

LM = Maximum mouldable length.

A.R. = by request.

Presumable presence in the stock in %
 90% ● 40% ● 5% ●



INOX

L805



“EUROMODEL” WINGNUT WITH SMOOTH HOLE INSERT

Material:
Reinforced polyamide.
Oils and greases resistant.

Surface:
Satin.

Colour:
Black (RAL 9011).

Central Cap:
Grey PA6 (RAL 7035 cod. 13).

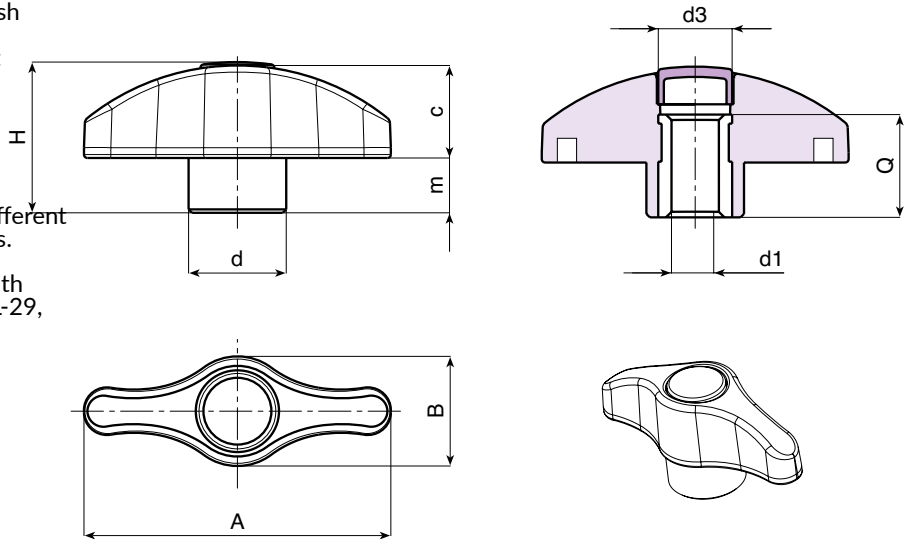
Alternative Cap Colour:
Orange (RAL 2004 cod. 02).
Blue (RAL 5015 cod. 07).
Yellow (RAL 1021 cod. 10).
Red (RAL 3000 cod. 16).
Green (RAL 6024 cod. 17).
Black (RAL 9011 cod. 01).



Main Insert:
L805: Brass right through bored bush with H9 tolerance.
L805CIN: Stainless steel (AISI 303) right through bored bush with H9 tolerance.

SPECIAL REQUESTS:

- It is possible to supply the inserts in different materials, on request and for quantities.
- It is possible to supply the wingnuts with colours as shown in the table at page L-29, on request and for quantities.



Version L805: Standard brass insert

Art.	A	B	H	m	c	d	d3	d1 H9	Q	⚖ g
L80544.TD050113	44	16	22	8	14	14	10	05	15	9
L80544.TD060113	44	16	22	8	14	14	10	06	15	9
L80544.TD080113	44	16	22	8	14	14	10	08	15	10
L80552.TD050113	52	19	26	9,5	16,5	17	13	05	18	14
L80552.TD060113	52	19	26	9,5	16,5	17	13	06	18	14
L80552.TD080113	52	19	26	9,5	16,5	17	13	08	18	15
L80552.TD100113	52	19	26	9,5	16,5	17	13	10	18	16
L80567.TD060113	67	24	32,5	11	21,5	21	16	06	18	25
L80567.TD080113	67	24	32,5	11	21,5	21	16	08	18	25
L80567.TD100113	67	24	32,5	11	21,5	21	16	10	18	26
L80567.TD120113	67	24	32,5	11	21,5	21	16	12	18	26

Version L805 PIN: Stainless steel insert

Art.	A	B	H	m	c	d	d3	d1 H9	Q	⚖ g
L80544.TD060113PIN	44	16	22	8	14	14	10	06	15	9
L80552.TD080113PIN	52	19	26	9,5	16,5	17	13	08	18	15
L80567.TD100113PIN	67	24	32,5	11	21,5	21	16	10	18	26

INOX

L808



“EUROMODEL” WINGNUT WITH SMOOTH HOLE INSERT WITHOUT CAP

Material:
Reinforced polyamide.
Oils and greases resistant.

Surface:
Satin.

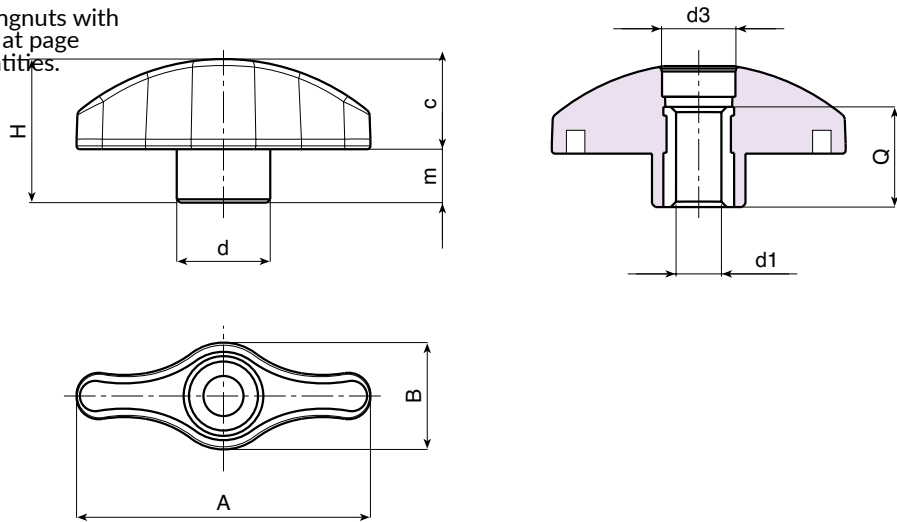
Colour:
Black (RAL 9011).

Main Insert:
L808: Brass right through bored bush with H9 tolerance.
L808CIN: Stainless steel (AISI 303) right through bored bush with H9 tolerance.



SPECIAL REQUESTS:

- It is possible to supply the inserts in different materials, on request and for quantities.
- It is possible to supply the wingnuts with colours as shown in the table at page L-29, on request and for quantities.



Version L808: Standard brass insert

Art.	A	B	H	m	c	d	d3	d1 H9	Q	⚖ g
L80844.TD0501	44	16	21,5	8	14	14	10	05	15	8
L80844.TD0601	44	16	21,5	8	14	14	10	06	15	8
L80844.TD0801	44	16	21,5	8	14	14	10	08	15	9
L80852.TD0501	52	19	25,5	9,5	16,5	17	13	05	18	13
L80852.TD0601	52	19	25,5	9,5	16,5	17	13	06	18	13
L80852.TD0801	52	19	25,5	9,5	16,5	17	13	08	18	14
L80852.TD1001	52	19	25,5	9,5	16,5	17	13	10	18	15
L80867.TD0601	67	24	32	11	21,5	21	16	06	18	24
L80867.TD0801	67	24	32	11	21,5	21	16	08	18	24
L80867.TD1001	67	24	32	11	21,5	21	16	10	18	25
L80867.TD1201	67	24	32	11	21,5	21	16	12	18	25

Version L808 PIN: Stainless steel insert

Art.	A	B	H	m	c	d	d3	d1 H9	Q	⚖ g
L80844.TD0601PIN	44	16	21,5	8	14	14	10	06	15	8
L80852.TD0801PIN	52	19	25,5	9,5	16,5	17	13	08	18	14
L80867.TD1001PIN	67	24	32	11	21,5	21	16	10	18	25

INOX

Presumable presence in the stock in %
 90% ● 40% ● 5% ●

L250CIN



FULL STAINLESS STEEL WING NUT WITH FEMALE THREADED HOLE

Material:

Precision-cast stainless steel, (Aisi 304).

Surface finish:

Satin.

Colour:

Natural.

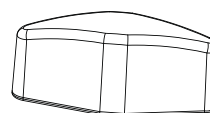
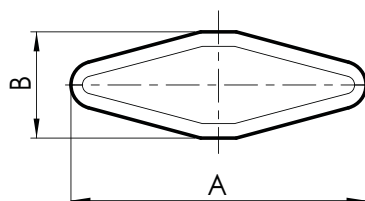
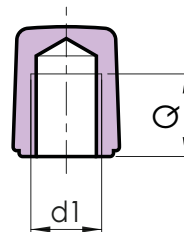
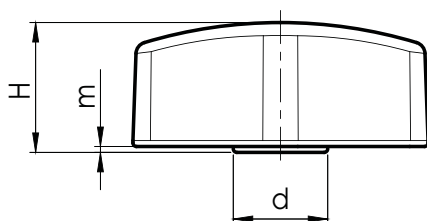
Hole:

Female threaded hole, obtained for further processing, (thread tolerance 6H).



SPECIAL REQUESTS:

- Upon request and for special quantities the wing nut can be supplied in AISI 316 stainless steel.



	Art.	A	B	H	m	d	d1 6H	Q	g
●	L25025.HM06CIN	25	9	11	0,5	8	M06	6,5	8
●	L25030.HM08CIN	30	11	13,5	0,5	10	M08	8	16
●	L25036.HM10CIN	36	13	15,5	0,5	12	M10	9	27

L251CIN



FULL STAINLESS STEEL WING NUT WITH THREADED STUD

Material:

Precision-cast stainless steel, (Aisi 304).

Surface finish:

Satin.

Colour:

Natural.

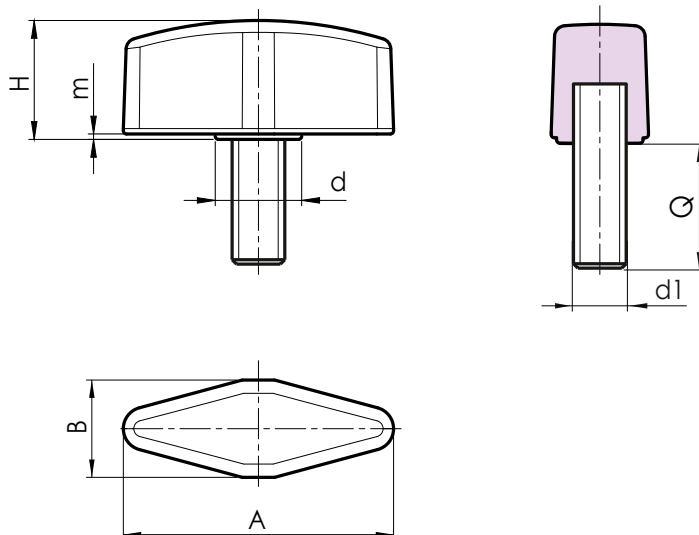
Insert:

Stainless steel (Aisi 303) threaded stud, (thread tolerance 6g).

Attention: the stud is mounted and glued in place.

SPECIAL REQUESTS:

- Upon request and for special quantities inserts can be supplied with customised lengths.
- Upon request and for special quantities the wing nut can be supplied in Aisi 316 stainless steel.



	Art.	A	B	H	m	d	d1 6g	Q	△ g
●	L25125.HM06X..CIN	25	9	11	0,5	8	M06	16-20-25	11-12-13
●	L25130.HM08X..CIN	30	11	13,5	0,5	10	M08	16-20-25-32	22-24-26-29
●	L25136.HM10X..CIN	36	13	15,5	0,5	12	M10	20-30-40	41-46-50

Enter the stud length choice in the two .. of the article code. Lengths by request with 100 pieces minimum quantity.

L750



WINGNUT WITH FEMALE THREADED INSERT

Material:

Reinforced polyamide.
Oils and greases resistant.

Surface:

Satin.

Colour:

Black (RAL 9011).

Main Insert:

L750:

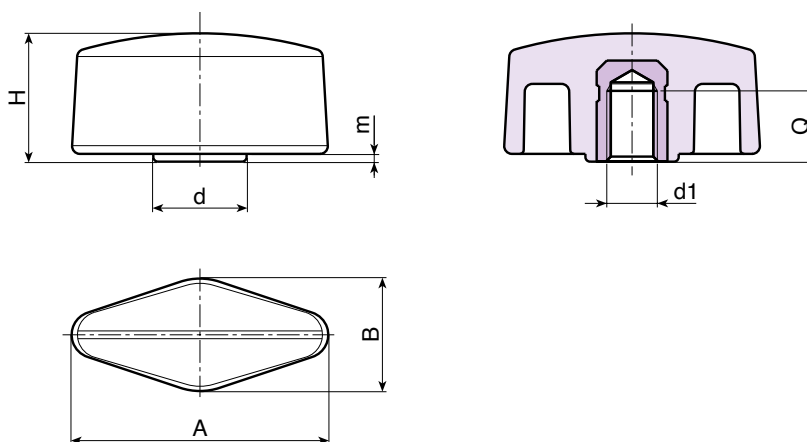
Brass blind threaded bush (tolerance 6H).

L750CIN:

Stainless steel blind threaded bush (Aisi 303),
(tolerance 6H).

SPECIAL REQUEST:

- It is possible to supply the inserts in different materials, on request and for quantities.
- It is possible to supply colours as shown in the table at pag. L-29, on request and for quantities.



Version L750: Standard brass insert

	Art.	A	B	H	m	d	d1 6H	Q	g
●	L75032.TM0501	33	15	16,5	1	12	M05	7	7
●	L75032.TM0601	33	15	16,5	1	12	M06	7	6
●	L75032.TM0801	33	15	16,5	1	12	M08	7	6
●	L75048.TM0601	48	15	16	1	12,5	M06	7	10
●	L75048.TM0801	48	15	16	1	12,5	M08	7	10

Version L750 CIN: Stainless steel insert

	Art.	A	B	H	m	d	d1 6H	Q	g
●	L75032.TM0501CIN	33	15	16,5	1	12	M05	7	9
●	L75032.TM0601CIN	33	15	16,5	1	12	M06	7	8
●	L75032.TM0801CIN	33	15	16,5	1	12	M08	7	8
●	L75048.TM0801CIN	48	15	16	1	12,5	M08	7	8

INOX

L751



WINGNUT WITH THREADED STUD

Material:
Reinforced polyamide.
Oils and greases resistant.

Surface:
Satin.

Colour:
Black (RAL 9011).

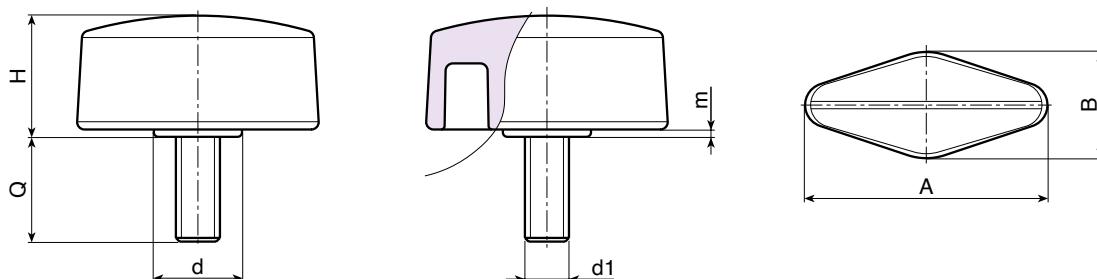
Main Insert:
L751:
Zinc plated steel threaded stud (tolerance 6g).

L751CIN:
Stainless steel threaded stud (Aisi 303),
(tolerance 6g).



SPECIAL REQUESTS:

- It is possible to supply inserts in different lengths or by special design, on request and for quantities.
- It is possible to supply inserts in different materials, on request and for quantities.
- It is possible to supply colours as shown in the table on page L-29, on request and for quantities.



Version L751: standard zinc plated insert

Art.	A	B	H	m	d	LM	d1 6g	Q	g
L75132.TM05X..01	33	15	16,5	1	12	60	M05	16-25-30-40	8-9-11-15
L75132.TM06X..01	33	15	16,5	1	12	60	M06	10-16-20-25-30-40	9-11-12-12-12,5-15,5
L75132.TM08X..01	33	15	16,5	1	12	60	M08	10-16-20-25-30-40	13,5-14,5-16-17,5-19-22
L75148.TM06X..01	48	15	16	1	12,5	70	M06	10-16-20	13-15-16-17
L75148.TM08X..01	48	15	16	1	12,5	70	M08	16-20-25-30-40	18-20-21,5-23-27

Version L751CIN: Stainless steel insert

Art.	A	B	H	m	d	LM	d1 6g	Q	g
L75132.TM05X..01CIN	33	15	16,5	1	12	60	M05	A.R.	-
L75132.TM06X..01CIN	33	15	16,5	1	12	60	M06	11-16-30	11-13-17
L75132.TM08X1601CIN	33	15	16,5	1	12	60	M08	16	15
L75148.TM06X..01CIN	48	15	16	1	12,5	70	M06	A.R.	-
L75148.TM08X..01CIN	48	15	16	1	12,5	70	M08	A.R.	-

INOX

Enter the stud length choice in the two .. of the article code. Lengths by request with 100 pieces minimum quantity.

LM = Maximum mouldable length.

A.R. = by request.

Presumable presence in the stock in %

90% ● 40% ● 5% ●



L754



LARGE WINGNUT WITH FEMALE THREADED INSERT

Material:

Reinforced polyamide.
Oils and greases resistant.

Surface:

Satin.

Colour:

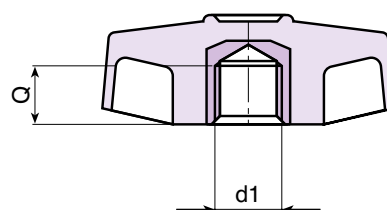
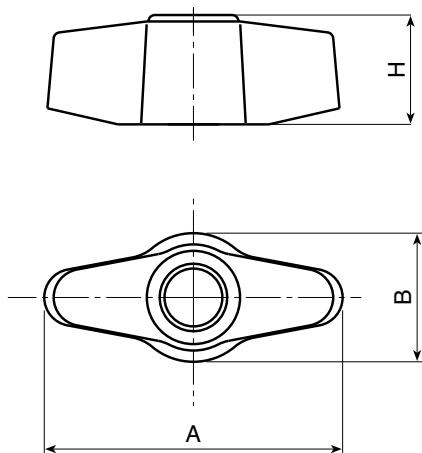
Black (RAL 9011).

Main Insert:

Brass blind threaded bush (tolerance 6H).

SPECIAL REQUEST:

- It is possible to supply the inserts in different materials, on request and for quantities.
- It is possible to supply colours as shown in the table at pag. L-29, on request and for quantities.



	Art.	A	B	H	d1 g6	Q	△ g
●	L75448.TM0601	45	20	17	M06	7	11
●	L75448.TM0801	45	20	17	M08	7	11
●	L75448.TM1001	45	20	17	M10	6	12

L755



LARGE WINGNUT WITH FEMALE RIGHT THROUGH THREADED INSERT

Material:

Reinforced polyamide.
Oils and greases resistant.

Surface:

Satin.

Colour:

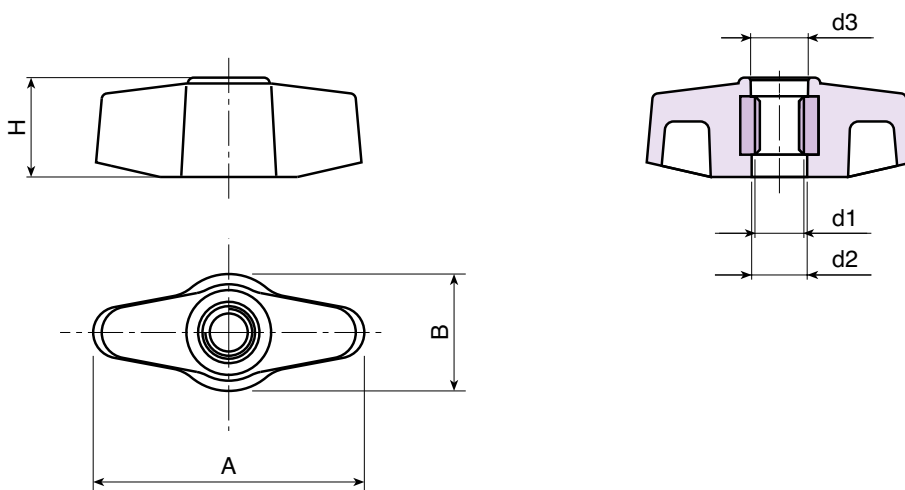
Black (RAL 9011).

Main Insert:

Zinc plated steel right through nut (tolerance 6H).

SPECIAL REQUEST:

- It is possible to supply the inserts in different materials, on request and for quantities.
- It is possible to supply colours as shown in the table at pag. L-29, on request and for quantities.



	Art.	A	B	H	d2	d3	d1 6g	Δ g
●	L75548.TM0601	45	20	17	9,5	10	M06	17
●	L75548.TM0801	45	20	17	9,5	10	M08	16

L756



LARGE WINGNUT WITH THREADED STUD

Material:

Reinforced polyamide.
Oils and greases resistant.

Surface:

Satin.

Colour:

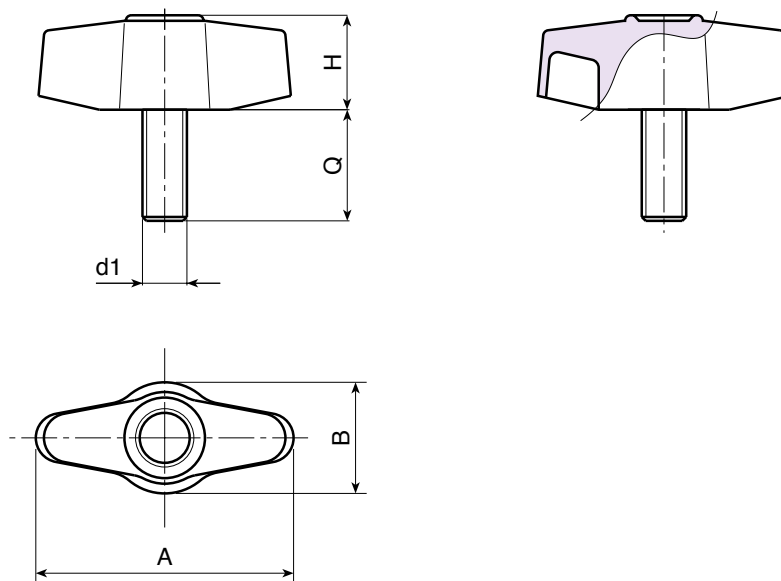
Black (RAL 9011).

Main Insert:

Zinc plated steel threaded stud (tolerance 6g).

SPECIAL REQUESTS:

- It is possible to supply inserts in different lengths or by special design, on request and for quantities.
- It is possible to supply inserts in different materials, on request and for quantities.
- It is possible to supply colours as shown in the table on pag L-29, on request and for quantities.



Art.	A	B	H	LM	d1 6g	Q	g
L75648.TM06X..01	45	20	17	50	M06	16-20	14,5-15
L75648.TM08X..01	45	20	17	50	M08	16-20-25-30-35-50	17-18,5-20-21,5-23-26
L75648.TM10X..01	45	20	17	50	M10	20-25-30	26-28,5-30

Enter the stud length choice in the two .. of the article code. Lengths by request with 150 pieces minimum quantity.

LM = Maximum mouldable length.

L747



28MM. WINGNUT WITH FEMALE THREADED INSERT

Material:

Reinforced polyamide.
Oils and greases resistant.

Surface:

Satin.

Colour:

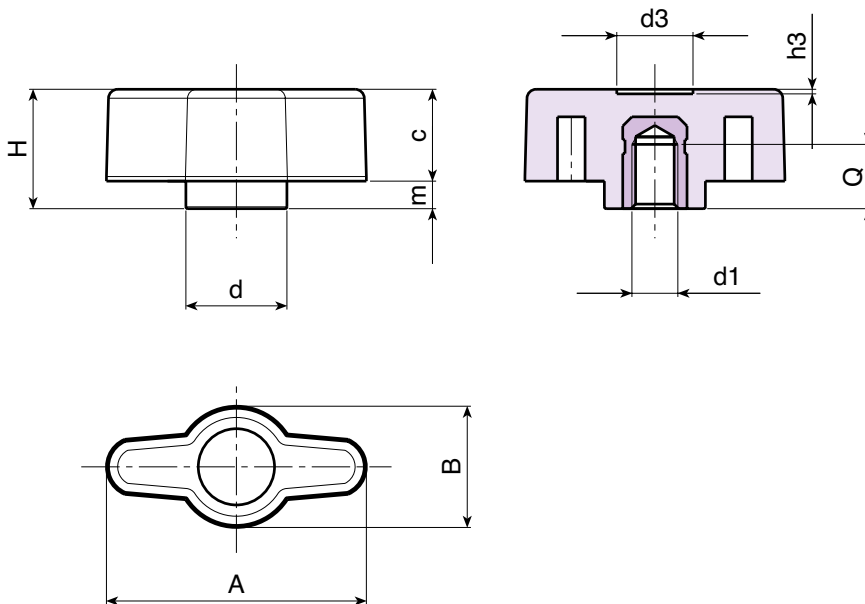
Black (RAL 9011).

Main Insert:

Brass blind threaded bush (tolerance 6H).

SPECIAL REQUEST:

- It is possible to supply the inserts in different materials, on request and for quantities.
- It is possible to supply colours as shown in the table at pag. L-29, on request and for quantities.



	Art.	A	B	H	m	c	d	d3	h3	d1 6H	Q	⚖ g
●	L74728.TM0401	28	13	13	3	10	11	8	0,5	M04	8	4
●	L74728.TM0501	28	13	13	3	10	11	8	0,5	M05	8	5
●	L74728.TM0601	28	13	13	3	10	11	8	0,5	M06	8	6

L748



28MM. WINGNUT WITH FEMALE RIGHT THROUGH THREADED INSERT

Material:

Reinforced polyamide.
Oils and greases resistant.

Surface:

Satin.

Colour:

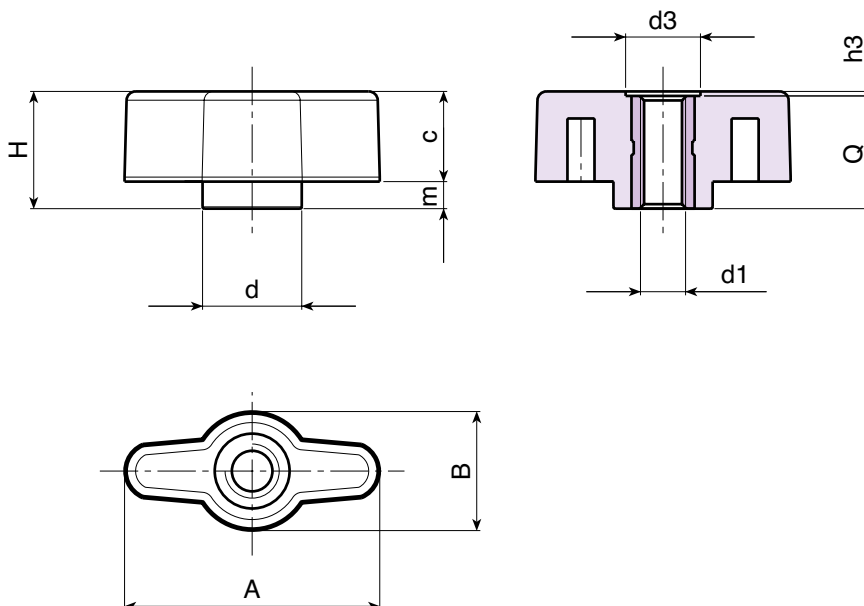
Black (RAL 9011).

Main Insert:

Brass right through threaded bush (tolerance 6H).

SPECIAL REQUEST:

- It is possible to supply the inserts in different materials, on request and for quantities.
- It is possible to supply colours as shown in the table at pag. L-29, on request and for quantities.



	Art.	A	B	H	m	c	d	d3	h3	d1 6H	Q	⚖ g
●	L74828.TM0401	28	13	13	3	10	11	8	0,5	M04	12,5	5
●	L74828.TM0501	28	13	13	3	10	11	8	0,5	M05	12,5	5
●	L74828.TM0601	28	13	13	3	10	11	8	0,5	M06	12,5	6

L749



28MM. WINGNUT WITH THREADED STUD

Material:
Reinforced polyamide.
Oils and greases resistant.

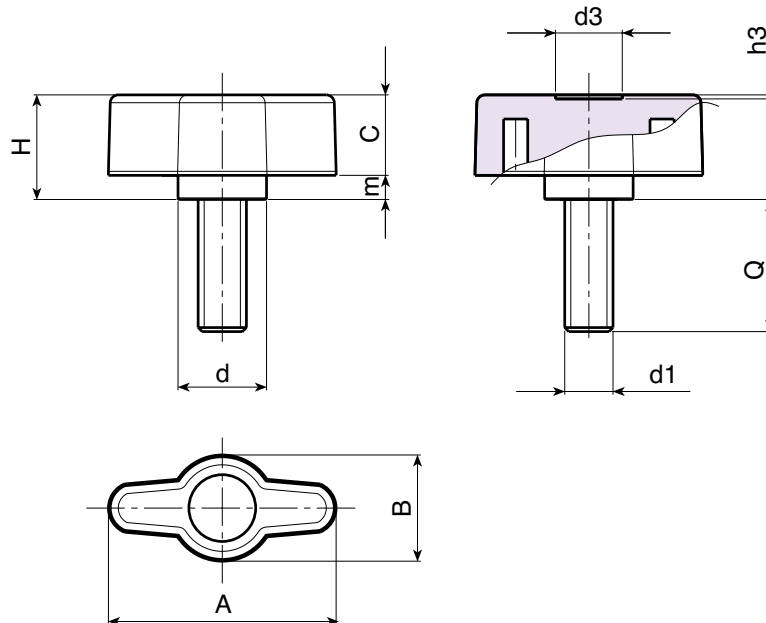
Surface:
Satin.

Colour:
Black (RAL 9011).

Main Insert:
Zinc plated steel threaded stud (tolerance 6g).

SPECIAL REQUESTS:

- It is possible to supply inserts in different lengths or by special design, on request and for quantities.
- It is possible to supply inserts in different materials, on request and for quantities.
- It is possible to supply colours as shown in the table on page L-29, on request and for quantities.



Art.	A	B	H	m	c	d	d3	h3	LM	d1 6g	Q	⚖ g
● L74928.TM04X..01	28	13	13	3	10	11	8	0,5	75	M04	A.R.	-
● L74928.TM05X..01	28	13	13	3	10	11	8	0,5	75	M05	A.R.	-
● L74928.TM06X4001	28	13	13	3	10	11	8	0,5	75	M06	40	11




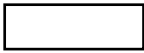












Enter the stud length choice in the two .. of the article code. Lengths by request with 150 pieces minimum quantity.

LM = Maximum mouldable length.

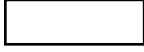













A.R. = By request.

COLOUR CHART

RAL COLOURS CODING

Colour		RAL	Cod.
Black		9011	01
Orange		2004	02
Orange		2011	03
White		9010	04
Blue		5002	05
Blue		5005	06
Blue		5015	07
Blue		5018	19
Blue		5019	21
Blue		5010	22
Yellow		1007	09
Yellow		1021	10
Grey		7024	12
Grey		7035	13
Red		3000	16
Green		6024	17

OTHER COLORS

Colour		Ref.	Cod.
White		-	52
Blue		-	53
Blue		pant. 645 U	54
Blue		pant. 300	55
Grey		-	57
Grey		-	59
Grey		NCS 7500	60
Red		-	64
Red		-	65
Natural		-	66
Green		-	70
Brown		-	71
Cream		-	72
Violet		-	73

AUTHORISED RESELLER

BOTECO Srl

www.boteco.it

36010 ZANE' (VI) - ITALY

Via L. Pettinà 16 (side street of Via Cuso)

Switchboard Tel.:+39-0445-316411 - Fax:+39-0445-316400

Sales Fax:+39-0445-316401 mail: commerciale@boteco.it

Administration Fax:+39-0445-316402 mail: amministrazione@boteco.it

Technical Fax:+39-0445-316404 mail: tecnico@boteco.it

Certified Mail Box: boteco@pec.botecopec.it

