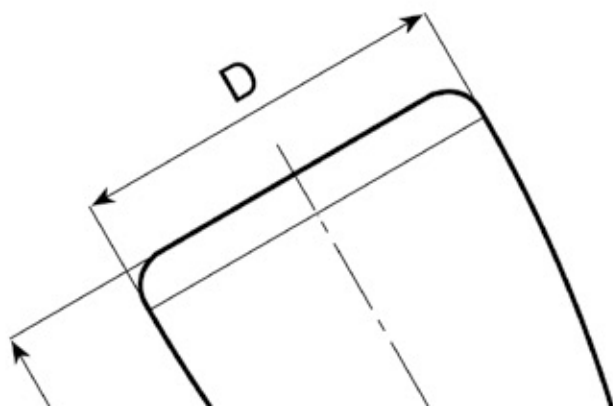
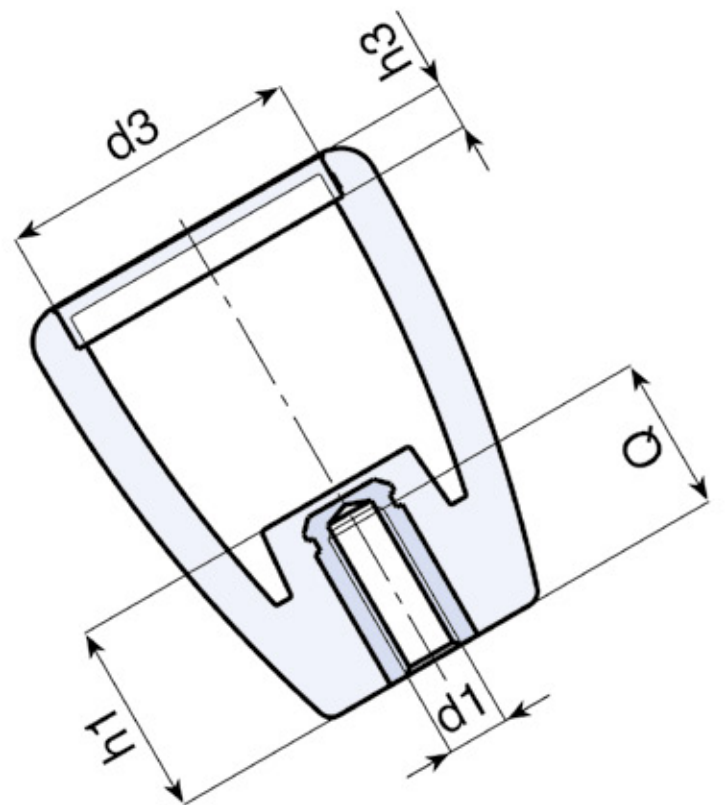




**BOTECO<sup>®</sup>**

**Family I**

**BALL KNOBS AND MUSHROOM KNOBS**





# I101

## DUROPLAST BALL KNOB WITH FEMALE THREADED INSERT

**Material:**  
Duroplast.  
Oils and greases resistant.  
High temperatures resistant.

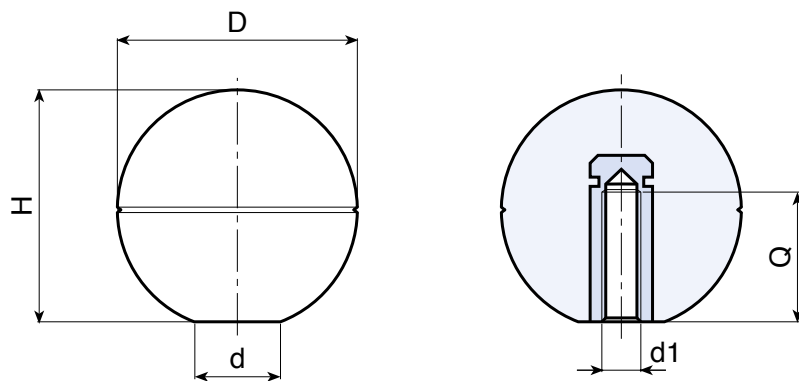
**Surface:**  
Glossy.



**Colour:**  
Black (RAL 9011).

**Main insert:**  
Brass blind threaded bore bush,  
(thread tolerance 6H).

### SPECIAL REQUEST:

- None.



	art.	D	H	d	d1 6H	Q	 g
●	I10118.BM0401	18	17	8,5	M04	8	6
●	I10118.BM0501	18	17	8,5	M05	8	6
●	I10126.BM0601	26	24	12	M06	13	15
●	I10126.BM0801	26	24	12	M08	13,5	14
●	I10130.BM1001	30	28	15	M10	15	25
●	I10135.BM0801	35	32	14	M08	13,5	34
●	I10135.BM1001	35	32	14	M10	15	33
●	I10140.BM1001	40	37	21	M10	15	61
●	I10140.BM1201	40	37	21	M12	18	62

# I103



## BALL KNOB WITH PLASTIC THREADED HOLE

### Material:

Reinforced polyamide.  
Oils and greases resistant.

### Surface:

Satin.

### Colour:

Black (RAL 9011).

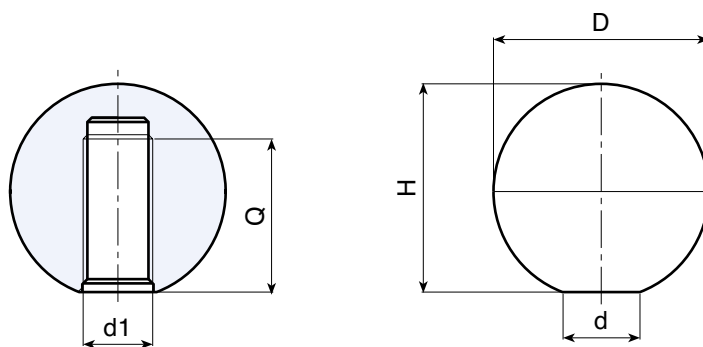
### Hole:

Female threaded blind hole obtained by moulding the plastic. (tolerance in not applicable).



### SPECIAL REQUEST:

- It is possible to supply colours as shown in the table at pag. I-25, on request and for quantities.  
(\* ) ATTENTION: Reduced colour range.



	art.	D	H	d	d1	Q	⚖ g
●	I10315.TM0401	15	14	9	M04	10	2
●	I10315.TM0501	15	14	9	M05	10	2
●	I10320.TM0401	20	19	10	M04	14	6
●	I10320.TM0501	20	19	10	M05	14	6
●	I10320.TM0601	20	19	10	M06	14	6
●	I10320.TM0801	20	19	10	M08	14	6
●	I10325.TM0501	25	23	14	M05	18	10
●	I10325.TM0601	25	23	14	M06	18	10
●	I10325.TM0801	25	23	14	M08	18	10
●	I10325.TM1001	25	23	14	M10	18	8
●	I10330.TM0501	30	29	14	M05	22	18
●	I10330.TM0601	30	29	14	M06	22	18
●	I10330.TM0801	30	29	14	M08	22	16
●	I10330.TM1001	30	29	14	M10	22	16
●	I10330.TM1201	30	29	14	M12	22	14
●	I10335.TM0601	35	33	16	(* ) M06	25	28
●	I10335.TM0801	35	33	16	(* ) M08	25	26
●	I10335.TM1001	35	33	16	(* ) M10	25	26
●	I10335.TM1201	35	33	16	(* ) M12	25	26
●	I10340.TM0801	40	39	16	(* ) M08	25	42
●	I10340.TM1001	40	39	16	(* ) M10	25	36
●	I10340.TM1201	40	39	16	(* ) M12	25	36
●	I10340.TM1401	40	39	16	(* ) M14	25	34
●	I10345.TM0801	45	44	18	(* ) M08	25	60
●	I10345.TM1001	45	44	18	(* ) M10	25	58
●	I10345.TM1201	45	44	18	(* ) M12	25	58
●	I10345.TM1401	45	44	18	(* ) M14	25	56
●	I10350.TM1001	50	49	18	(* ) M10	25	80
●	I10350.TM1201	50	49	18	(* ) M12	25	78
●	I10350.TM1401	50	49	18	(* ) M14	25	76
●	I10350.TM1601	50	49	18	(* ) M16	25	73

# I104



## BALL KNOB WITH SELF-FIXING HOLE

### Material:

Reinforced polyamide.  
Oils and greases resistant.

### Surface:

Satin.

### Colour:

Black (RAL 9011).

### Hole:

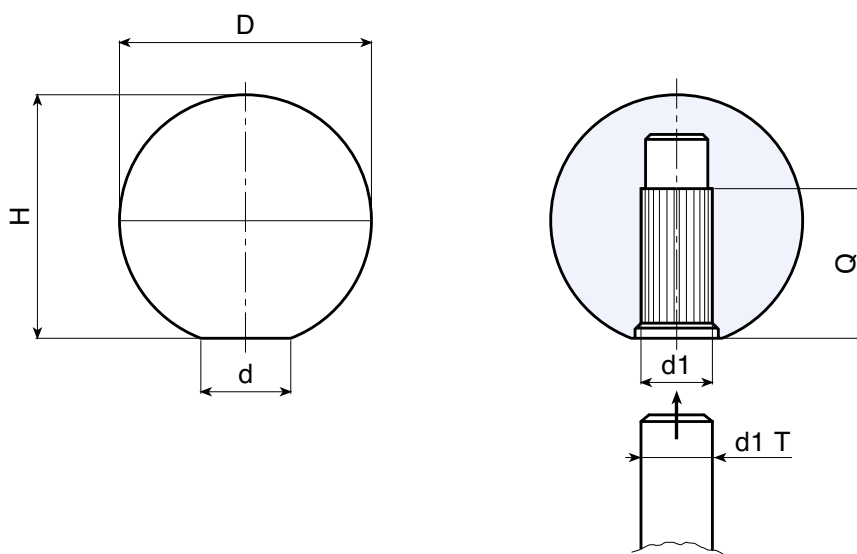
Female smooth hole, with special deformable fixing ribs, obtained by moulding the plastic.

### Fixing:

Push fit.

### SPECIAL REQUEST:

- It is possible to supply colours as shown in the table at pag. I-25, on request and for quantities.  
(\* ) ATTENTION: Reduced colour range.



	art.	D	H	d	d1 T	d1	Q	△ g
●	I10420.TG0501	20	19	10	+0 -0,048	05	12	4
●	I10420.TG0601	20	19	10	+0 -0,048	06	12	4
●	I10425.TG0601	25	23	14	+0 -0,048	06	16	10
●	I10425.TG0801	25	23	14	+0 -0,058	08	16	10
●	I10430.TG0801	30	29	14	+0 -0,058	08	17	16
●	I10430.TG1001	30	29	14	+0 -0,058	10	17	16
●	I10435.TG0801	35	33	16	+0 -0,058	(* ) 08	20	26
●	I10435.TG1001	35	33	16	+0 -0,058	(* ) 10	20	26
●	I10440.TG1001	40	39	16	+0 -0,058	(* ) 10	25	42
●	I10440.TG1201	40	39	16	+0 -0,070	(* ) 12	25	38
●	I10445.TG1001	45	44	18	+0 -0,058	(* ) 10	25	58
●	I10445.TG1201	45	44	18	+0 -0,070	(* ) 12	25	58
●	I10445.TG1401	45	44	18	+0 -0,070	(* ) 14	25	56
●	I10450.TG1001	50	49	18	+0 -0,058	(* ) 10	25	80
●	I10450.TG1201	50	49	18	+0 -0,070	(* ) 12	25	78
●	I10450.TG1401	50	49	18	+0 -0,070	(* ) 14	25	76

# I105



## BALL KNOB WITH FEMALE THREADED INSERT

### Material:

Reinforced polyamide.  
Oils and greases resistant.

### Surface:

Satin.

### Colour:

Black (RAL 9011).

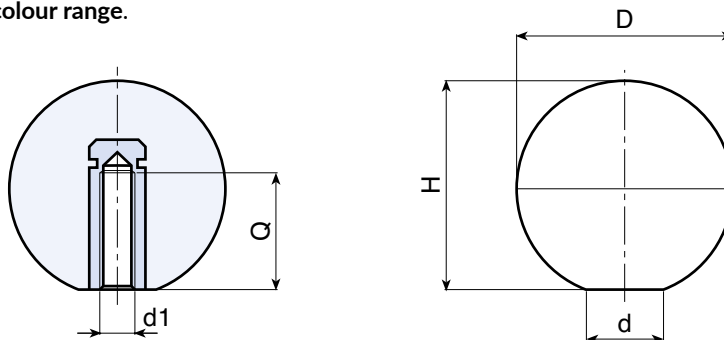
### Main Insert:

Brass blind threaded bush (tolerance 6H).



### SPECIAL REQUEST:

- It is possible to supply the inserts in different materials, on request and for quantities.
  - It is possible to supply colours as shown in the table at pag. I-25, on request and for quantities.
- (\*) **ATTENTION: Reduced colour range.**



	art.	D	H	d	d1 6H	Q	g
●	I10515.TM0401	15	14	8	M04	8	4
●	I10515.TM0501	15	14	8	M05	7	4
●	I10520.TM0401	20	19	10	M04	8	8
●	I10520.TM0501	20	19	10	M05	7	8
●	I10520.TM0601	20	19	10	M06	7	8
●	I10520.TM0801	20	19	10	M08	7	8
●	I10525.TM0501	25	23	14	M05	10	12
●	I10525.TM0601	25	23	14	M06	10	12
●	I10525.TM0801	25	23	14	M08	11	14
●	I10525.TM1001	25	23	14	M10	14	12
●	I10530.TM0501	30	29	14	M05	15	22
●	I10530.TM0601	30	29	14	M06	16	22
●	I10530.TM0801	30	29	14	M08	14	22
●	I10530.TM1001	30	29	14	M10	14	22
●	I10535.TM0601	35	33	16	(*) M06	16	34
●	I10535.TM0801	35	33	16	(*) M08	14	34
●	I10535.TM1001	35	33	16	(*) M10	14	34
●	I10335.TM1201	35	33	16	(*) M12	18	32
●	I10540.TM0801	40	39	16	(*) M08	14	52
●	I10540.TM1001	40	39	16	(*) M10	14	52
●	I10540.TM1201	40	39	16	(*) M12	18	52
●	I10540.TM1401	40	39	16	(*) M14	19	50
●	I10545.TM0801	45	44	18	(*) M08	14	60
●	I10545.TM1001	45	44	18	(*) M10	18	60
●	I10545.TM1201	45	44	18	(*) M12	18	58
●	I10545.TM1401	45	44	18	(*) M14	19	56
●	I10550.TM1001	50	49	18	(*) M10	18	94
●	I10550.TM1201	50	49	18	(*) M12	18	92
●	I10550.TM1401	50	49	18	(*) M14	19	90

# I107



## CONICAL KNOB WITH FEMALE THREADED INSERT

### Material:

Reinforced polyamide.  
Oils and greases resistant.

### Surface:

Satin.

### Colour:

Black (RAL 9011).

### Main Insert:

#### I107:

Brass blind threaded bush (tolerance 6H).

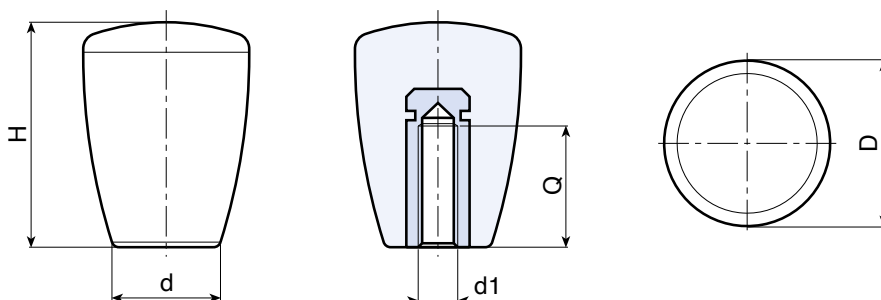
#### I107CIN:

Stainless steel blind threaded bush (Aisi 303),  
(tolerance 6H).

### SPECIAL REQUEST:

- It is possible to supply the inserts in different materials, on request and for quantities.
- It is possible to supply colours as shown in the table at pag. I-25, on request and for quantities.

(\*) ATTENTION: Reduced colour range.



	art.	D	H	d	d1 6H	Q	g
●	I10721.TM0401	21	28	13	M04	10	14
●	I10721.TM0501	21	28	13	M05	10	13
●	I10721.TM0601	21	28	13	M06	10	13
●	I10725.TM0601	25	34	17	M06	10	18
●	I10725.TM0801	25	34	17	M08	13	20
●	I10725.TM1001	25	34	17	M10	14	22
●	I10732.TM0801	32	43	21	M08	14	40
●	I10732.TM1001	32	43	21	M10	14	40
●	I10732.TM1201	32	43	21	M12	18	44
●	I10743.TM1001	43	58	27	(*) M10	18	90
●	I10743.TM1201	43	58	27	(*) M12	18	90
●	I10743.TM1401	43	58	27	(*) M14	19	92

## INOX

	art.	D	H	d	d1 6H	Q	g
●	I10721.TM0501CIN	21	28	13	M05	15	16
●	I10725.TM0601CIN	25	34	17	M06	16	20
●	I10725.TM0801CIN	25	34	17	M08	16	22
●	I10725.TM1001CIN	25	34	17	M10	16	25
●	I10732.TM0801CIN	32	43	21	M08	16	43
●	I10732.TM1001CIN	32	43	21	M10	16	43
●	I10732.TM1201CIN	32	43	21	M12	20	48
●	I10743.TM1001CIN	43	58	27	(*) M10	16	92
●	I10743.TM1201CIN	43	58	27	(*) M12	20	92

Presumable presence in the stock in %

90% ● 40% ● 5% ●

# I108



## CONICAL KNOB WITH THREADED PLASTIC BORE

### Material:

Reinforced polyamide.  
Oils and greases resistant.

### Surface:

Satin.

### Colour:

Black (RAL 9011).

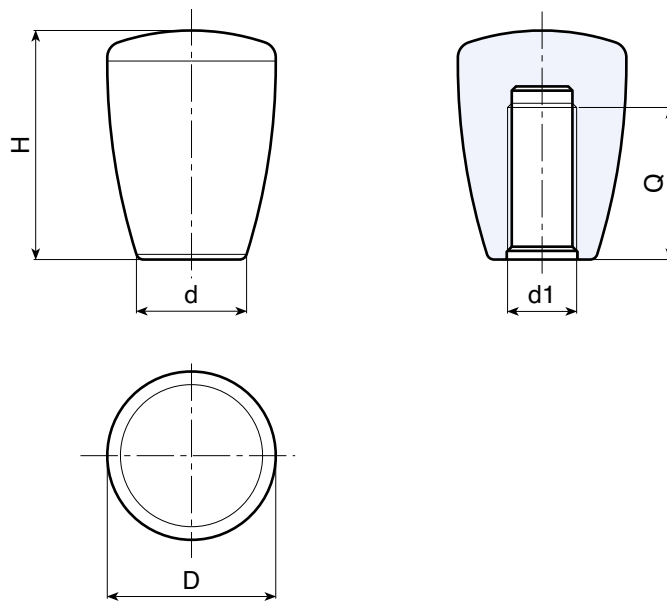
### Hole:

Female threaded blind hole obtained by moulding the plastic. (tolerance in not applicable).

### SPECIAL REQUEST:

- It is possible to supply colours as shown in the table at pag. I-25, on request and for quantities.

(\*) ATTENTION: Reduced colour range.



	art.	D	H	d	d1	Q	g
●	I10821.TM0401	21	28	13	M04	16	13
●	I10821.TM0501	21	28	13	M05	16	12
●	I10821.TM0601	21	28	13	M06	16	11
●	I10825.TM0501	25	34	17	M05	24	16
●	I10825.TM0601	25	34	17	M06	24	16
●	I10825.TM0801	25	34	17	M08	24	14
●	I10825.TM1001	25	34	17	M10	24	14
●	I10832.TM0801	32	43	21	M08	30	32
●	I10832.TM1001	32	43	21	M10	30	32
●	I10832.TM1201	32	43	21	M12	30	32
●	I10843.TM1001	43	58	27	(*) M10	36	80
●	I10843.TM1201	43	58	27	(*) M12	36	78
●	I10843.TM1401	43	58	27	(*) M14	36	76
●	I10843.TM1601	43	58	27	(*) M16	36	74



# I109



## CONICAL KNOB WITH SELF-FIXING HOLE

**Material:**  
Reinforced polyamide.  
Oils and greases resistant.

**Surface:**  
Satin.

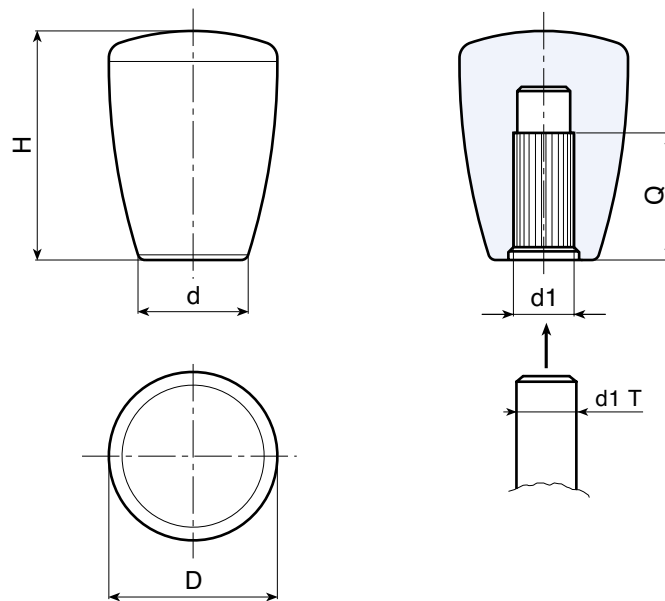
**Colour:**  
Black (RAL 9011).

**Hole:**  
Female smooth hole, with special deformable fixing ribs, obtained by moulding the plastic.

**Fixing:**  
Push fit.

### SPECIAL REQUEST:

- It is possible to supply colours as shown in the table at pag. I-25, on request and for quantities.
- (\*) **ATTENTION: Reduced colour range.**



	art.	D	H	d	d1 T	d1	Q	g
●	I10921.TG0501	21	28	13	+0 -0,048	05	16	13
●	I10925.TG0601	25	34	17	+0 -0,048	06	24	16
●	I10925.TG0801	25	34	17	+0 -0,058	08	24	16
●	I10925.TG1001	25	34	17	+0 -0,058	10	24	14
●	I10932.TG0801	32	43	21	+0 -0,058	08	30	36
●	I10932.TG1001	32	43	21	+0 -0,058	10	30	34
●	I10932.TG1201	32	43	21	+0 -0,070	12	30	30
●	I10943.TG1001	43	58	27	+0 -0,058	(*) 10	36	80
●	I10943.TG1201	43	58	27	+0 -0,070	(*) 12	36	78
●	I10943.TG1401	43	58	27	+0 -0,070	(*) 14	36	76
●	I10943.TG1501	43	58	27	+0 -0,070	(*) 15	36	74

# I112



## CONICAL KNOB WITH THREADED STUD

### Material:

Reinforced polyamide.  
Oils and greases resistant.

### Surface:

Satin.

### Colour:

Black (RAL 9011).

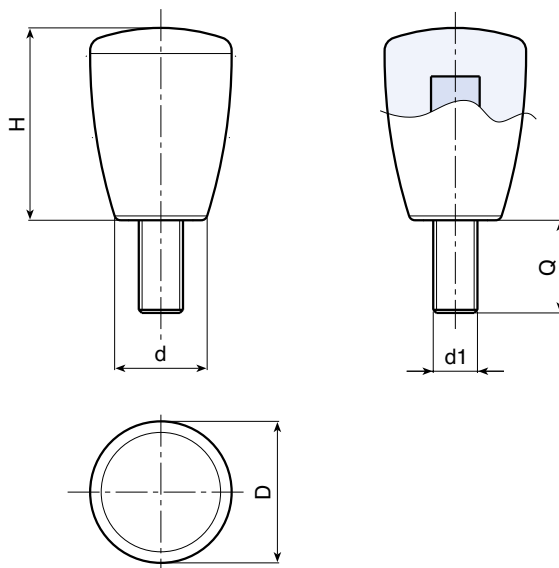
### Main Insert:

Zinc plated steel threaded stud (tolerance 6g).

### SPECIAL REQUESTS:

- It is possible to supply inserts in different lengths or by special design, on request and for quantities.
- It is possible to supply inserts in different materials, on request and for quantities.
- It is possible to supply colours as shown in the table on page I-25, on request and for quantities.

(\*) ATTENTION: Reduced colour range.



	art.	D	H	d	LM	d1	Q	g
●	I11221.TM04X1601	21	28	13	65	M04	16	16
●	I11221.TM05X..01	21	28	13	65	M05	A.R.	-
●	I11221.TM06X1601	21	28	13	65	M06	16	18
●	I11225.TM06X..01	25	34	17	70	M06	A.R.	-
●	I11225.TM08X1601	25	34	17	70	M08	16	20
●	I11225.TM10X2001	25	34	17	70	M10	20	24
●	I11232.TM08X3001	32	43	21	60	M08	30	48
●	I11232.TM10X..01	32	43	21	60	M10	A.R.	-
●	I11232.TM12X..01	32	43	21	60	M12	A.R.	-
●	I11243.TM10X..01	43	58	27	80	(*) M10	A.R.	-
●	I11243.TM12X..01	43	58	27	80	(*) M12	A.R.	-
●	I11243.TM14X..01	43	58	27	80	(*) M14	A.R.	-

Enter the stud length choice in the two .. of the article code. Lengths by request with 250 pieces minimum quantity.

LM = Maximum mouldable length.

# I113



## CONICAL KNOB WITH LEVER ARM

**Material:**

Reinforced polyamide.  
Oils and greases resistant.

**Surface:**

Satin.

**Colour:**

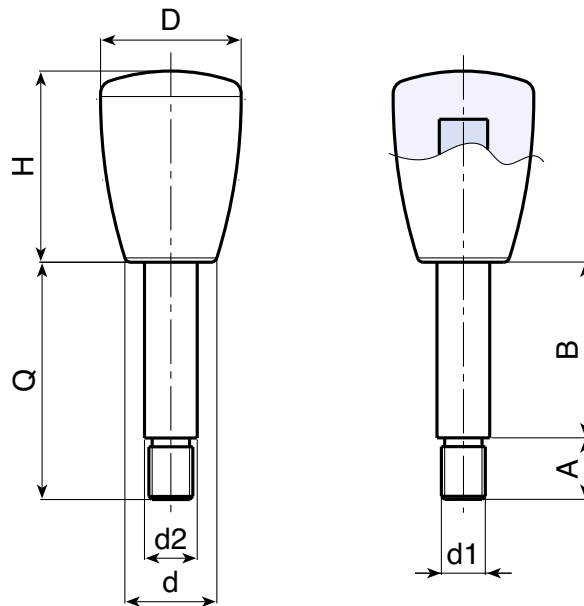
Black (RAL 9011).

**Main Insert:**

Zinc plated steel partially threaded stud  
(tolerance 6g).

**SPECIAL REQUESTS:**

- It is possible to supply inserts in different lengths or by special design, on request and for quantities.
- It is possible to supply inserts in different materials/treatments, on request and for quantities.
- It is possible to supply colours as shown in the table on page I-25, on request and for quantities.



	art.	D	H	d	A	B	d2	d1 6g	Q	Δ g
●	I11325.TI10X4001	25	34	17	10	30	10	M08	40	42
●	I11325.TI10X5501	25	34	17	10	45	10	M08	55	48
●	I11325.TI10X8001	25	34	17	10	70	10	M08	80	75
●	I11332.TI12X5501	32	43	21	15	40	12	M10	55	86
●	I11332.TI12X6501	32	43	21	15	50	12	M10	65	97
●	I11332.TI14X6501	32	43	21	15	50	14	M12	65	114

LM = Maximum mouldable length.

It's possible to have different length, by customers requests. Minimum 250 pieces.

# I500



## ROUND CONICAL KNOB WITH SELF-FIXING HOLE

### Material:

Reinforced polyamide.  
Oils and greases resistant.

### Surface:

Satin.

### Colour:

Black (RAL 9011).

### Hole:

Female smooth hole, with special deformable fixing ribs, obtained by moulding the plastic.

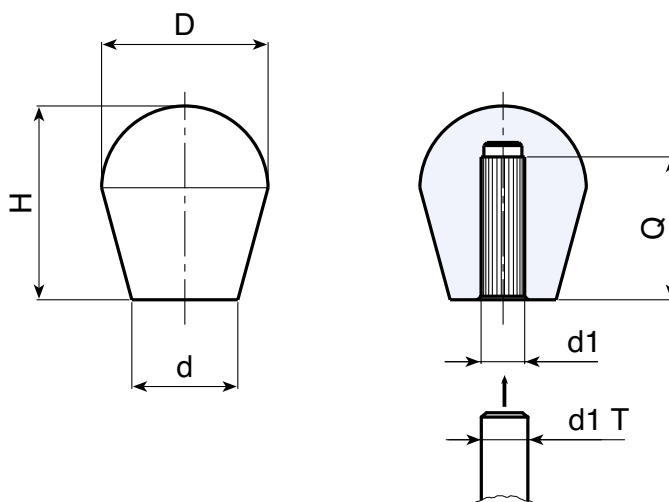
### Fixing:

Push fit.



### SPECIAL REQUEST:

- It is possible to supply colours as shown in the table at pag. I-25, on request and for quantities.



	art.	D	H	d	d1 T	d1	Q	g
●	I50022.TG0501	22	26	12	+0 -0,048	05	18	9
●	I50022.TG0601	22	26	12	+0 -0,048	06	18	8,5
●	I50022.TG0801	22	26	12	+0 -0,058	08	18	8
●	I50030.TG1001	27	32	18	+0 -0,058	10	23	11
●	I50030.TG1201	27	32	18	+0 -0,070	12	22	11
●	I50030.TG1401	27	32	18	+0 -0,070	14	20	10
●	I50032.TG0601	32	37	19,5	+0 -0,048	06	25	23
●	I50032.TG0801	32	37	19,5	+0 -0,058	08	25	23
●	I50032.TG1001	32	37	19,5	+0 -0,058	10	25	22
●	I50032.TG1201	32	37	19,5	+0 -0,070	12	25	21
●	I50032.TG1401	32	37	19,5	+0 -0,070	14	25	20
●	I50037.TG1201	37	43	24	+0 -0,070	12	30	35
●	I50037.TG1601	37	43	24	+0 -0,070	16	30	33
●	I50037.TG1801	37	43	24	+0 -0,070	18	30	31

## CONICAL KNOB WITH CAP AND FEMALE THREADED INSERT

### Material:

Reinforced polyamide.  
Oils and greases resistant.

### Surface:

Satin.

### Colour:

Black (RAL 9011).

### Central Cap:

Grey polyamide (RAL 7035 cod. 13).

### Alternative Cap Colour:

Orange (RAL 2004 cod. 02)  
Blue (RAL 5015 cod. 07)  
Yellow (RAL 1021 cod. 10)  
Red (RAL 3000 cod. 16)  
Green (RAL 6024 cod. 17)  
Black (RAL 9011 cod. 01)

### Main Insert:

Brass blind threaded bush (tolerance 6H).

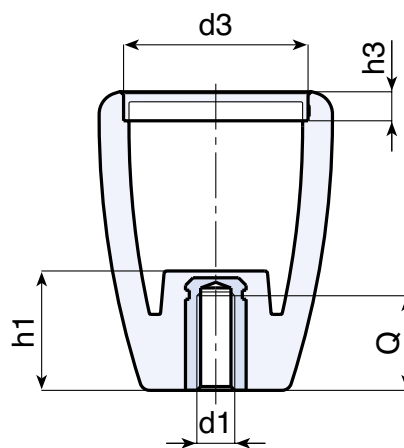
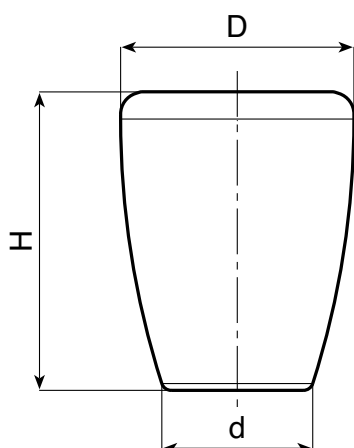


### SPECIAL REQUEST:

- It is possible to supply the inserts in different materials, on request and for quantities.
- It is possible to supply colours as shown in the table at pag. I-25, on request and for quantities.

### PAD PRINTING SERVICE:

- Upon request and for special quantities caps can be supplied with customized pad printing.



	art.	D	H	d	h1	d3	h3	d1 6H	Q	$\Delta$ g
●	I12343.TM0801	43	55	27	30	34	5,5	M08	16	37
●	I12343.TM1001	43	55	27	30	34	5,5	M10	15	38
●	I12343.TM1201	43	55	27	30	34	5,5	M12	15	40

# I124



## CONICAL KNOB WITH CAP AND THREADED PLASTIC BORE

**Material:**  
Reinforced polyamide.  
Oils and greases resistant.

**Surface:**  
Satin.

**Colour:**  
Black (RAL 9011).

**Central Cap:**  
Grey polyamide (RAL 7035 cod. 13).

**Alternative Cap Colour:**  
Orange (RAL 2004 cod. 02)  
Blue (RAL 5015 cod. 07)  
Yellow (RAL 1021 cod. 10)  
Red (RAL 3000 cod. 16)  
Green (RAL 6024 cod. 17)  
Black (RAL 9011 cod. 01)

**Hole:**  
Female threaded blind hole obtained by moulding the plastic. (tolerance in not applicable).

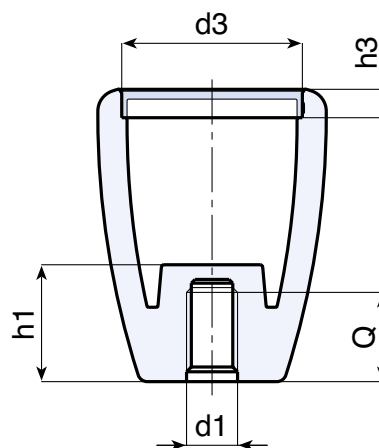
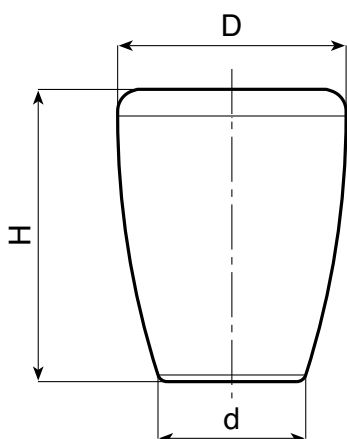


### SPECIAL REQUEST:

- It is possible to supply colours as shown in the table at pag. I-25, on request and for quantities.

### PAD PRINTING SERVICE:

- Upon request and for special quantities caps can be supplied with customized pad printing.



	art.	D	H	d	h1	d3	h3	d1	Q	g
●	I12443.TM0801	43	55	27	30	34	5,5	M08	24	34
●	I12443.TM1001	43	55	27	30	34	5,5	M10	24	32
●	I12443.TM1201	43	55	27	30	34	5,5	M12	24	30

# I125



## CONICAL KNOB WITH CAP AND SELF-FIXING HOLE

### Material:

Reinforced polyamide.  
Oils and greases resistant.

### Surface:

Satin.

### Colour:

Black (RAL 9011).

### Central Cap:

Grey polyamide (RAL 7035 cod. 13).

### Alternative Cap Colour:

Orange (RAL 2004 cod. 02)  
Blue (RAL 5015 cod. 07)  
Yellow (RAL 1021 cod. 10)  
Red (RAL 3000 cod. 16)  
Green (RAL 6024 cod. 17)  
Black (RAL 9011 cod. 01)

### Hole:

Female smooth hole, with special deformable fixing ribs, obtained by moulding the plastic.

### Fixing:

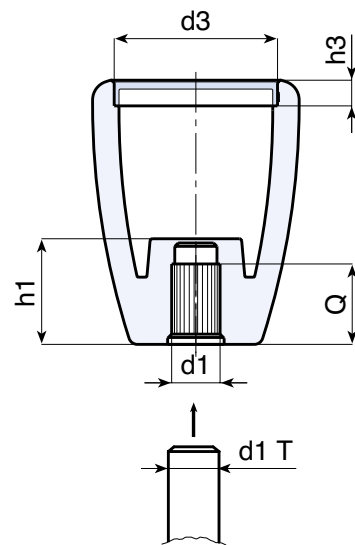
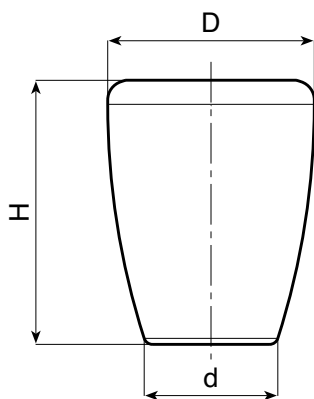
Push fit.

### SPECIAL REQUEST:

- It is possible to supply colours as shown in the table at pag. I-25, on request and for quantities.

### PAD PRINTING SERVICE:

- Upon request and for special quantities caps can be supplied with customized pad printing.



	art.	D	H	d	h1	d3	h3	d1 T	d1	Q	g
●	I12543.TG0801	43	55	27	30	34	5,5	+0 -0,058	08	24	34
●	I12543.TG1001	43	55	27	30	34	5,5	+0 -0,058	10	24	32
●	I12543.TG1201	43	55	27	30	34	5,5	+0 -0,070	12	24	30

# I126



## CONICAL KNOB WITH CAP AND THREADED STUD

### Material:

Reinforced polyamide.  
Oils and greases resistant.

### Surface:

Satin.

### Colour:

Black (RAL 9011).

### Central Cap:

Grey polyamide (RAL 7035 cod. 13).

### Alternative Cap Colour:

Orange (RAL 2004 cod. 02)  
Blue (RAL 5015 cod. 07)  
Yellow (RAL 1021 cod. 10)  
Red (RAL 3000 cod. 16)  
Green (RAL 6024 cod. 17)  
Black (RAL 9011 cod. 01)

### Main Insert:

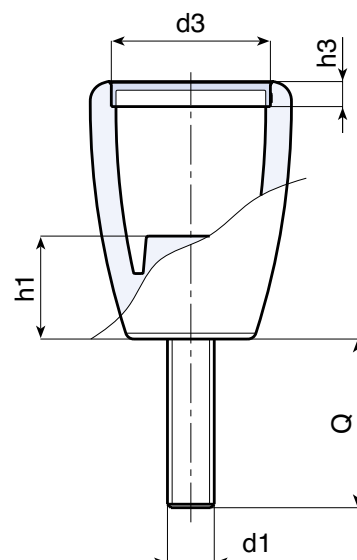
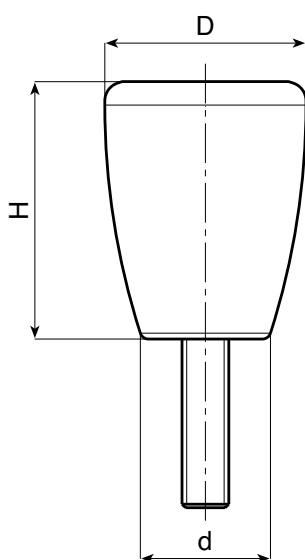
Zinc plated steel threaded stud (tolerance 6g).

### SPECIAL REQUESTS:

- It is possible to supply inserts in different lengths or by special design, on request and for quantities.
- It is possible to supply inserts in different materials, on request and for quantities.
- It is possible to supply colours as shown in the table on page I-25, on request and for quantities.

### PAD PRINTING SERVICE:

- Upon request and for special quantities caps can be supplied with customized pad printing.



	art.	D	H	d	h1	d3	h3	LM	d1 6g	Q	⚖ g
●	I12643.TM08X.01	43	55	27	30	34	5,5	80	M08	A.R.	-
●	I12643.TM10X.01	43	55	27	30	34	5,5	80	M10	A.R.	-
●	I12643.TM12X.01	43	55	27	30	34	5,5	80	M12	A.R.	-

Enter the stud length choice in the two .. of the article code. Lengths by request with 250 pieces minimum quantity.

LM = Maximum mouldable length.

A.R. = by request.



# I117



## MUSHROOM KNOB WITH FEMALE THREADED INSERT

### Material:

Reinforced polyamide.  
Oils and greases resistant.

### Surface:

Satin.

### Colour:

Black (RAL 9011).

### Main Insert:

#### I117:

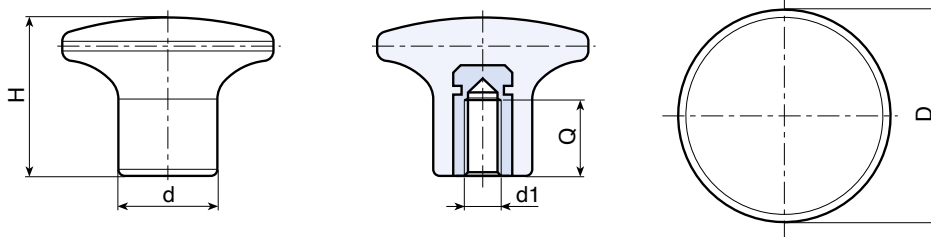
Brass blind threaded bush (tolerance 6H).

#### I117CIN:

Stainless steel blind threaded bush (Aisi 303), (tolerance 6H).

### SPECIAL REQUEST:

- It is possible to supply the inserts in different materials, on request and for quantities.
- It is possible to supply colours as shown in the table at pag. I-25, on request and for quantities.



	art.	D	H	d	d1	Q	g
●	I11722.TM0401	22	17	11	M04	9,5	6
●	I11722.TM0501	22	17	11	M05	8	6
●	I11722.TM0601	22	17	11	M06	8	6
●	I11726.TM0501	26	20,5	13	M05	15,5	9
●	I11726.TM0601	26	20,5	13	M06	13	9
●	I11726.TM0801	26	20,5	13	M08	13	10
●	I11732.TM0501	32	24	15	M05	8	12
●	I11732.TM0601	32	24	15	M06	8	12
●	I11732.TM0801	32	24	15	M08	13	14
●	I11745.TM0801	45	32	21	M08	13	32
●	I11745.TM1001	45	32	21	M10	13	33
●	I11745.TM1201	45	32	21	M12	17	34

## INOX

	art.	D	H	d	d1	Q	g
●	I11722.TM0501CIN	22	17	11	M05	9	8
●	I11722.TM0601CIN	22	17	11	M06	9	9
●	I11726.TM0501CIN	26	20,5	13	M05	9	10
●	I11726.TM0601CIN	26	20,5	13	M06	9	11
●	I11726.TM0801CIN	26	20,5	13	M08	13	12
●	I11732.TM0601CIN	32	24	15	M06	14	16
●	I11732.TM0801CIN	32	24	15	M08	13	18
●	I11745.TM1001CIN	45	32	21	M10	16	35
●	I11745.TM1201CIN	45	32	21	M12	15	39

Presumable presence in the stock in %   
 90% ● 40% ● 5% ●

# I118



## MUSHROOM KNOB WITH THREADED PLASTIC BORE

### Material:

Reinforced polyamide.  
Oils and greases resistant.

### Surface:

Satin.

### Colour:

Black (RAL 9011).

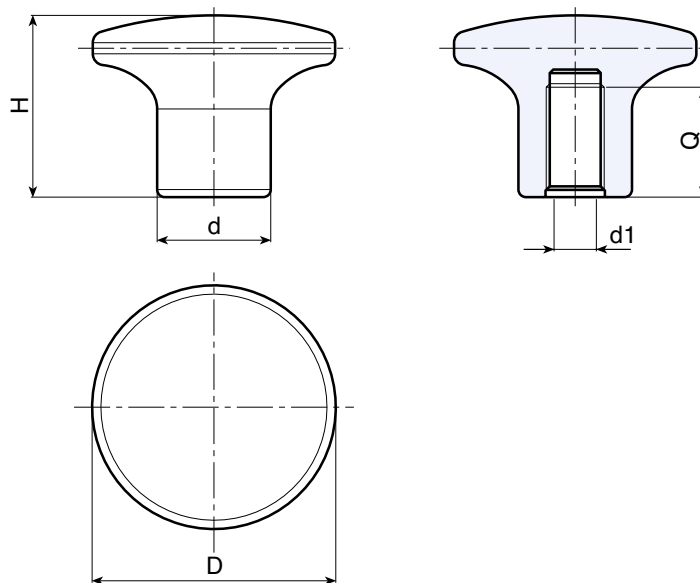
### Hole:

Female threaded blind hole obtained by moulding the plastic. (tolerance in not applicable).



### SPECIAL REQUEST:

- It is possible to supply colours as shown in the table at pag. I-25, on request and for quantities.



	art.	D	H	d	d1	Q	g
●	I11822.TM0401	22	17	11	M04	12	4
●	I11822.TM0501	22	17	11	M05	12	4
●	I11822.TM0601	22	17	11	M06	12	4
●	I11826.TM0501	26	20,5	13	M05	13	6
●	I11826.TM0601	26	20,5	13	M06	13	6
●	I11826.TM0801	26	20,5	13	M08	13	6
●	I11832.TM0501	32	24	15	M05	15	10
●	I11832.TM0601	32	24	15	M06	15	10
●	I11832.TM0801	32	24	15	M08	15	10
●	I11845.TM0801	45	32	21	M08	21	26
●	I11845.TM1001	45	32	21	M10	21	25
●	I11845.TM1201	45	32	21	M12	21	25
●	I11845.TM1401	45	32	21	M14	21	23

# I119



## MUSHROOM KNOB WITH THREADED STUD

### Material:

Reinforced polyamide.  
Oils and greases resistant.

### Surface:

Satin.

### Colour:

Black (RAL 9011).

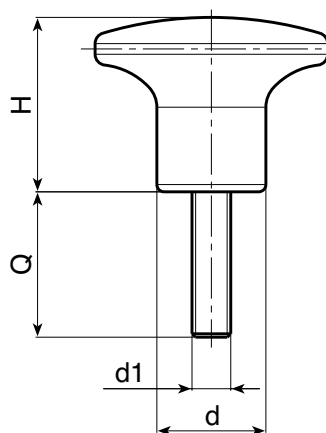
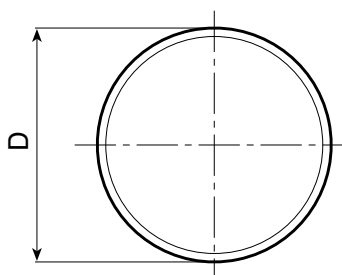
### Main Insert:

Zinc plated steel threaded stud (tolerance 6g).



### SPECIAL REQUESTS:

- It is possible to supply inserts in different lengths or by special design, on request and for quantities.
- It is possible to supply inserts in different materials, on request and for quantities.
- It is possible to supply colours as shown in the table on pag I-25, on request and for quantities.



	art.	D	H	d	LM	d1 6g	Q	g
●	I11922.TM04X2001	22	17	11	65	M04	20	6
●	I11922.TM05X3001	22	17	11	56	M05	30	9
●	I11922.TM06X3001	22	17	11	65	M06	30	12
●	I11926.TM05X..01	26	20,5	13	70	M05	A.R.	11
●	I11926.TM06X3001	26	20,5	13	70	M06	30	14
●	I11926.TM08X3001	26	20,5	13	70	M08	30	30
●	I11932.TM05X..01	32	24	15	70	M05	A.R.	16
●	I11932.TM06X3001	32	24	15	70	M06	30	18
●	I11932.TM08X4001	32	24	15	70	M08	40	28
●	I11945.TM08X..01	45	32	21	100	M08	A.R.	42
●	I11945.TM10X3001	45	32	21	100	M10	30	48
●	I11945.TM12X4001	45	32	21	100	M12	40	72

Enter the stud length choice in the two .. of the article code. Lengths by request with 250 pieces minimum quantity.

LM = Maximum mouldable length.

# I130



## MUSHROOM KNOB WITH CAP AND THREADED STUD

### Material:

Reinforced polyamide.  
Oils and greases resistant.

### Surface:

Satin.

### Colour:

Black (RAL 9011).

### Central Cap:

Grey polyamide (RAL 7035 cod. 13).

### Alternative Cap Colour:

Orange (RAL 2004 cod. 02)  
Blue (RAL 5015 cod. 07)  
Yellow (RAL 1021 cod. 10)  
Red (RAL 3000 cod. 16)  
Green (RAL 6024 cod. 17)  
Black (RAL 9011 cod. 01)

### Main Insert:

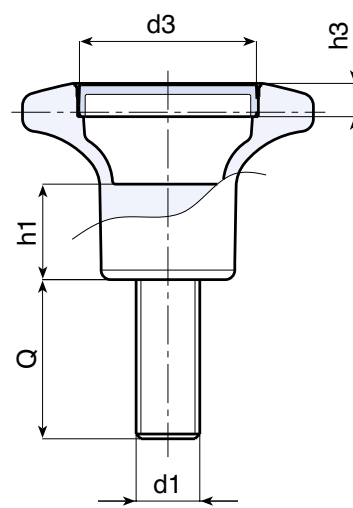
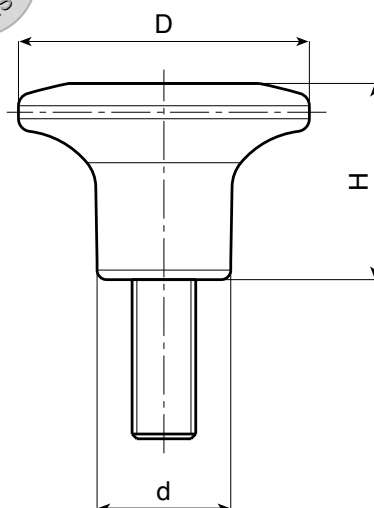
Zinc plated steel threaded stud (tolerance 6g).

### SPECIAL REQUESTS:

- It is possible to supply inserts in different lengths or by special design, on request and for quantities.
- It is possible to supply inserts in different materials, on request and for quantities.
- It is possible to supply colours as shown in the table on pag I-25, on request and for quantities.

### PAD PRINTING SERVICE:

- Upon request and for special quantities caps can be supplied with customized pad printing.



	art.	D	H	d	h1	d3	h3	LM	d1 6g	Q	g
●	I13045.TM08X3001	45	31	21	15	28	5	100	M08	30	36
●	I13045.TM10X..01	45	31	21	15	28	5	100	M10	A.R.	-
●	I13045.TM12X..01	45	31	21	15	28	5	100	M12	A.R.	-

# I131



## MUSHROOM KNOB WITH CAP AND FEMALE THREADED INSERT

### Material:

Reinforced polyamide.  
Oils and greases resistant.

### Surface:

Satin.

### Colour:

Black (RAL 9011).

### Central Cap:

Grey polyamide (RAL 7035 cod. 13).

### Alternative Cap Colour:

Orange (RAL 2004 cod. 02)  
Blue (RAL 5015 cod. 07)  
Yellow (RAL 1021 cod. 10)  
Red (RAL 3000 cod. 16)  
Green (RAL 6024 cod. 17)  
Black (RAL 9011 cod. 01)

### Main Insert:

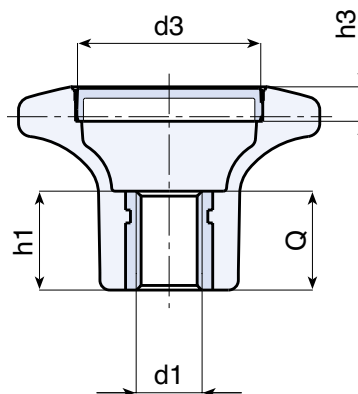
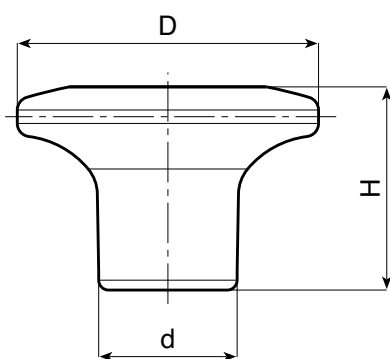
Brass blind threaded bush (tolerance 6H).

### SPECIAL REQUESTS:

- It is possible to supply inserts in different materials, on request and for quantities.
- It is possible to supply colours as shown in the table on pag I-25, on request and for quantities.

### PAD PRINTING SERVICE:

- Upon request and for special quantities caps can be supplied with customized pad printing.



	art.	D	H	d	h1	d3	h3	d1 6H	Q	△ g
●	I13145.TM0801	45	31	21	15	28	5	M08	15	18
●	I13145.TM1001	45	31	21	15	28	5	M10	15	17
●	I13145.TM1201	45	31	21	15	28	5	M12	15	15
●	I13145.TM1401	45	31	21	15	28	5	M14	15	14

# I132



## MUSHROOM KNOB WITH CAP AND THREADED PLASTIC BORE

**Material:**  
Reinforced polyamide.  
Oils and greases resistant.

**Surface:**  
Satin.

**Colour:**  
Black (RAL 9011).

**Central Cap:**  
Grey polyamide (RAL 7035 cod. 13).

**Alternative Cap Colour:**  
Orange (RAL 2004 cod. 02)  
Blue (RAL 5015 cod. 07)  
Yellow (RAL 1021 cod. 10)  
Red (RAL 3000 cod. 16)  
Green (RAL 6024 cod. 17)  
Black (RAL 9011 cod. 01)

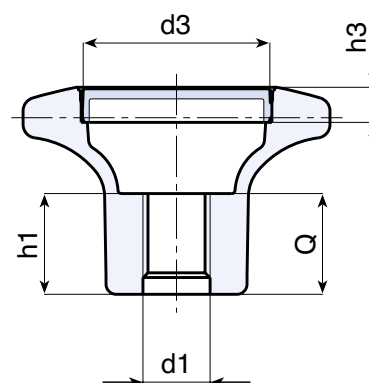
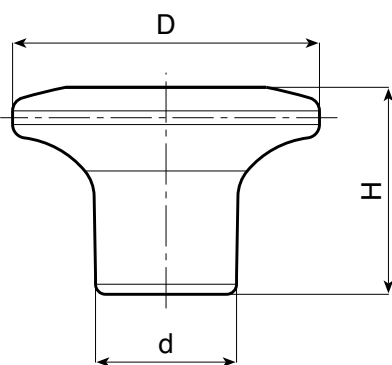
**Hole:**  
Female threaded blind hole obtained by moulding the plastic. (tolerance in not applicable).

### SPECIAL REQUESTS:

- It is possible to supply colours as shown in the table on pag I-25, on request and for quantities.

### PAD PRINTING SERVICE:












- Upon request and for special quantities caps can be supplied with customized pad printing.



	art.	D	H	d	h1	d3	h3	d1	Q	⚖ g
●	I13245.TM0801	45	31	21	15	28	5	M08	15	16
●	I13245.TM1001	45	31	21	15	28	5	M10	15	15
●	I13245.TM1201	45	31	21	15	28	5	M12	15	14

# COLOUR CHART

## RAL COLOURS CODING

Colour		RAL	Cod.
Black		9011	01
Orange		2004	02
Orange		2011	03
White		9010	04
Blue		5015	07
Yellow		1007	09
Yellow		1021	10
Grey		7024	12
Grey		7035	13
Red		3000	16
Green		6024	17

AUTHORISED RESELLER

**BOTECO Srl**

**[www.boteco.it](http://www.boteco.it)**

36010 ZANE' (VI) - ITALY

Via L. Pettinà 16 ( side street of Via Cuso)

Switchboard Tel.:+39-0445-316411 - Fax:+39-0445-316400

Sales Fax:+39-0445-316401 mail: [commerciale@boteco.it](mailto:commerciale@boteco.it)

Administration Fax:+39-0445-316402 mail: [amministrazione@boteco.it](mailto:amministrazione@boteco.it)

Technical Fax:+39-0445-316404 mail: [tecnico@boteco.it](mailto:tecnico@boteco.it)

**Certified Mail Box: [boteco@pec.botecopec.it](mailto:boteco@pec.botecopec.it)**

