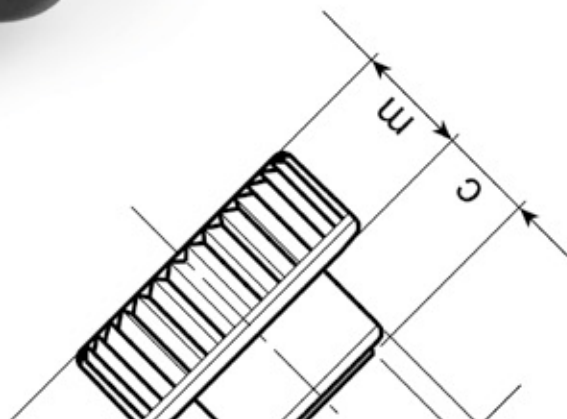
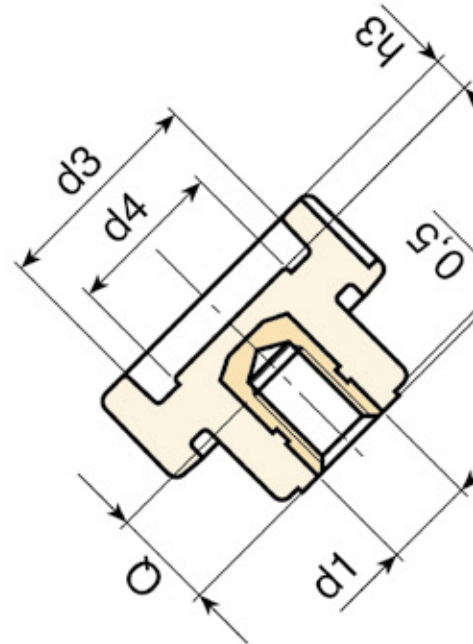




BOTECO[®]

Family H

KNURLED HANDWEELS



H180



DUROPLAST KNURLED KNOBS WITH BOSS AND THREADED BORE INSERT

Material:
Duroplast.
Oils and greases resistant.
High temperatures resistant.

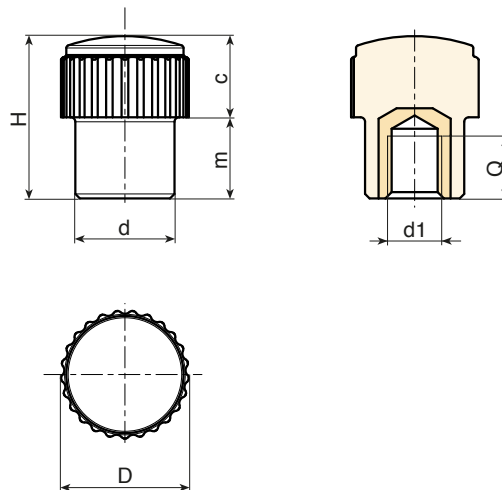
Surface:
Glossy.

Colour:
Black (RAL 9011).

Main insert:
Brass blind threaded bore bush, (thread tolerance 6H).

SPECIAL REQUESTS:

- None.



	art.	D	H	d	m	c	d1 6H	Q	g
●	H18015.BM0501	15	18	11	9	9	M05	11	5

H184



DUROPLAST KNURLED KNOBS WITH THREADED BORE INSERT

Material:

Duroplast.
Oils and greases resistant.
High temperatures resistant.

Surface:

Glossy.

Colour:

Black (RAL 9011).

Main insert:

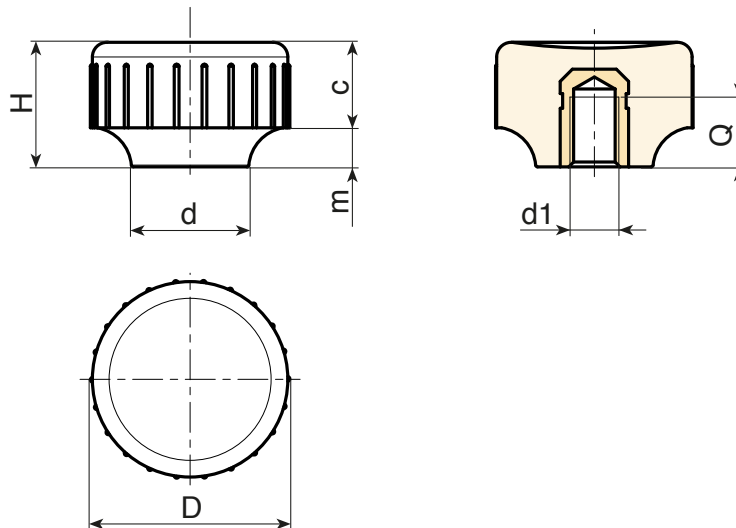
Brass blind threaded bore bush, (thread tolerance 6H).



H

SPECIAL REQUESTS:

- None.



	art.	D	H	d	m	c	d1 6H	Q	g
●	H18420.BM0501	20	13	13	4	9	M05	8	6
●	H18420.BM0601	20	13	13	4	9	M06	7	5

H185



PF

UL94
HB

RoHS
COMPLIANT

DUROPLAST KNURLED KNOBS WITH THREADED STUD

Material:

Duroplast.
Oils and greases resistant.
High temperatures resistant.

Surface:

Glossy.

Colour:

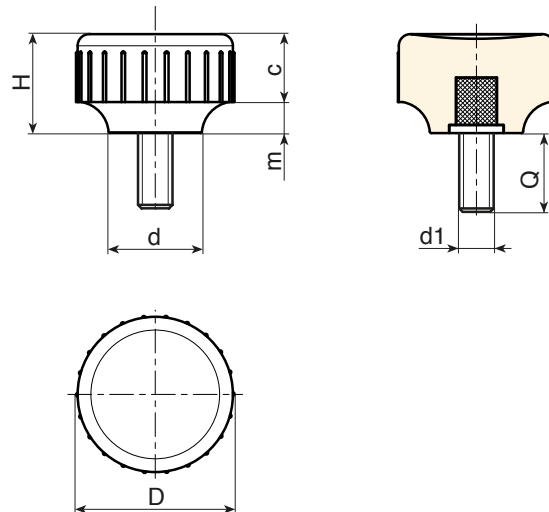
Black (RAL 9011).

Main insert:

Zinc plated steel threaded stud (tolerance 6g).

SPECIAL REQUESTS:

- None.



	art.	D	H	d	m	c	d1 6g	Q	△ g
●	H18520.BM05X..01	20	13	13	4	9	M05	20-30-40	9-10-11
●	H18520.BM06X..01	20	13	13	4	9	M06	20-30-40	10-11-12

H765



KNURLED HOLLOWED HANDWHEEL WITH THREADED THROUGH FEMALE INSERT

Material:

Reinforced polyamide.
Oils and greases resistant.

Surface:

Satin.

Colour:

Black (RAL 9011).

Main Insert:

H765:

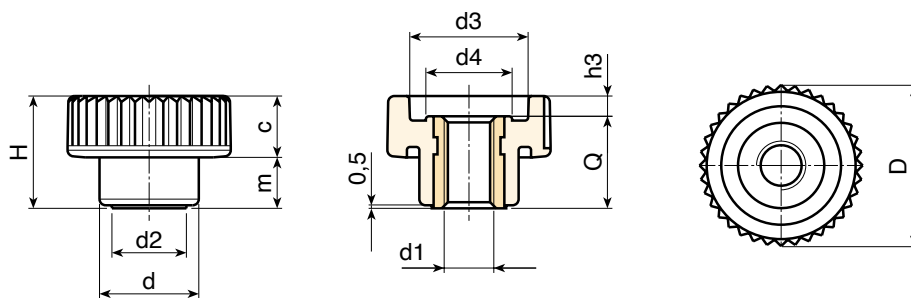
Brass right through threaded bush (tolerance 6H).

H765PIN:

Stainless steel right through threaded bush (Aisi 303) (tolerance 6H).

SPECIAL REQUESTS:

- It is possible to supply the inserts in different materials, on request and for quantities.
- It is possible to supply colours as shown in the table at pag. H-23, on request and for quantities.



Icon	art.	D	H	d	m	c	d2	d3	d4	h3	d1 6H	Q	g
●	H76515.TM0401	15	10,5	10	4,5	6	8	10	7,5	2	M04	8,5	2
●	H76515.TM0501	15	10,5	10	4,5	6	8	10	7,5	2	M05	8,5	2
●	H76521.TM0501	21	15	13	6,5	8,5	9,5	15	10,5	2,5	M05	12,5	5
●	H76521.TM0601	21	15	13	6,5	8,5	9,5	15	10,5	2,5	M06	12,5	5
●	H76526.TM0601	26	18	16	8,5	9,5	12	19	13	3	M06	15	10
●	H76526.TM0801	26	18	16	8,5	9,5	12	19	13	3	M08	15	10
●	H76533.TM0801	32	23	20	10,5	12,5	15	23	16	5	M08	18	16
●	H76533.TM1001	32	23	20	10,5	12,5	15	23	16	5	M10	18	16
●	H76540.TM0801	40	28	25	12,5	15,5	18	28	21	6	M08	22	31
●	H76540.TM1001	40	28	25	12,5	15,5	18	28	21	6	M10	22	32
●	H76540.TM1201	40	28	25	12,5	15,5	18	28	21	6	M12	22	32
●	H76540.TM1401	40	28	25	12,5	15,5	18	28	21	6	M14	22	34

INOX

Icon	art.	D	H	d	m	c	d2	d3	d4	h3	d1 6H	Q	g
●	H76515.TM0401PIN	15	10,5	10	4,5	6	8	10	7,5	2	M04	8,5	3
●	H76515.TM0501PIN	15	10,5	10	4,5	6	8	10	7,5	2	M05	8,5	3
●	H76521.TM0501PIN	21	15	13	6,5	8,5	9,5	15	10,5	2,5	M05	12,5	6
●	H76521.TM0601PIN	21	15	13	6,5	8,5	9,5	15	10,5	2,5	M06	12,5	6
●	H76526.TM0601PIN	26	18	16	8,5	9,5	12	19	13	3	M06	15	11,5
●	H76526.TM0801PIN	26	18	16	8,5	9,5	12	19	13	3	M08	15	11,5
●	H76533.TM0801PIN	32	23	20	10,5	12,5	15	23	16	5	M08	18	18
●	H76533.TM1001PIN	32	23	20	10,5	12,5	15	23	16	5	M10	18	18
●	H76540.TM0801PIN	40	28	25	12,5	15,5	18	28	21	6	M08	22	32
●	H76540.TM1001PIN	40	28	25	12,5	15,5	18	28	21	6	M10	22	31
●	H76540.TM1201PIN	40	28	25	12,5	15,5	18	28	21	6	M12	22	34

H766



KNURLED HOLLOWED HANDWHEEL WITH THREADED STUD

Material:
Reinforced polyamide.
Oils and greases resistant.

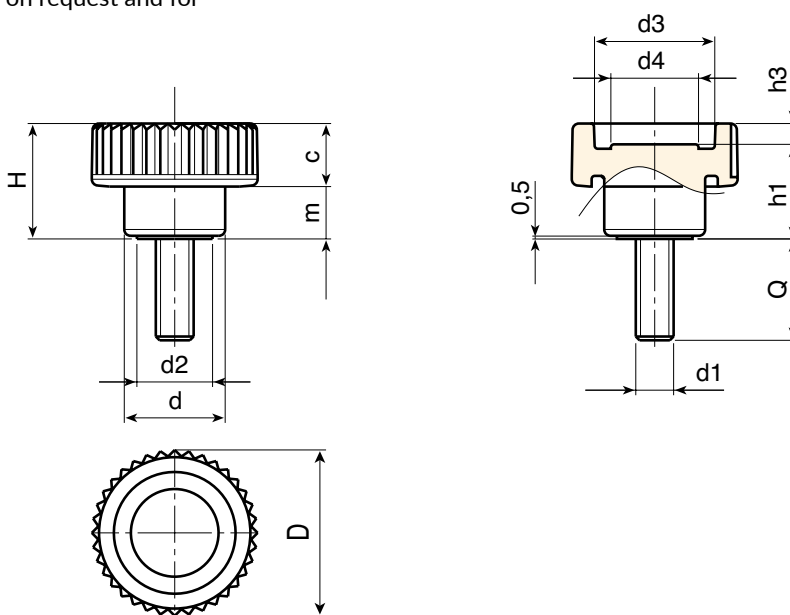
Surface:
Satin.

Colour:
Black (RAL 9011).

Main Insert:
Zinc plated steel threaded stud (tolerance 6g).

SPECIAL REQUESTS:

- It is possible to supply inserts in different lengths or by special design, on request and for quantities.
- It is possible to supply inserts in different materials, on request and for quantities.
- It is possible to supply colours as shown in the table on page H-23, on request and for quantities.



art.	D	H	d	m	c	d2	d3	d4	h1	h3	LM	d1 6g	Q	△ g
H76615.TM04X..01	15	10,5	10	4,5	6	8	10	7,5	8,5	2	40	M04	11-15-19	2,5-3-3,5
H76615.TM05X..01	15	10,5	10	4,5	6	8	10	7,5	8,5	2	40	M05	11-15-19	4-4,5-5
H76621.TM05X..01	21	15	13	6,5	8,5	9,5	15	10,5	12,5	2,5	40	M05	10-16-20-30	6,5-6,5-7,5-9,5
H76621.TM06X..01	21	15	13	6,5	8,5	9,5	15	10,5	12,5	2,5	40	M06	10-16-20-25	7,5-8,5-9-10,5
H76626.TM06X..01	26	18	16	8,5	9,5	12	19	13	15	3	80	M06	10-16-20-25	10-11-11,5-12,5
H76626.TM08X..01	26	18	16	8,5	9,5	12	19	13	15	3	80	M08	16-20-25	15,5-16,5-18,5
H76633.TM08X..01	32	23	20	10,5	12,5	15	23	16	18	5	80	M08	16-20-30	21-24-30
H76633.TM10X..01	32	23	20	10,5	12,5	15	23	16	18	5	80	M10	20-30-40	30-30,5-35,5
H76640.TM08X..01	40	28	25	12,5	15,5	18	28	21	22	6	100	M08	16-30-40	29,5-38-44
H76640.TM10X3001	40	28	25	12,5	15,5	18	28	21	22	6	100	M10	30	46
H76640.TM12X5001	40	28	25	12,5	15,5	18	28	21	22	6	100	M12	50	78
H76640.TM14X..01	40	28	25	12,5	15,5	18	28	21	22	6	100	M14	A.R.	-

Enter the stud length choice in the two .. of the article code. Lengths by request with 250 pieces minimum quantity.

LM = Maximum mouldable length.

A.R. = by request.

H766 CIN



INOX

KNURLED HOLLOWED HANDWHEEL WITH THREADED STUD

Material:

Reinforced polyamide.
Oils and greases resistant.

Surface:

Satin.

Colour:

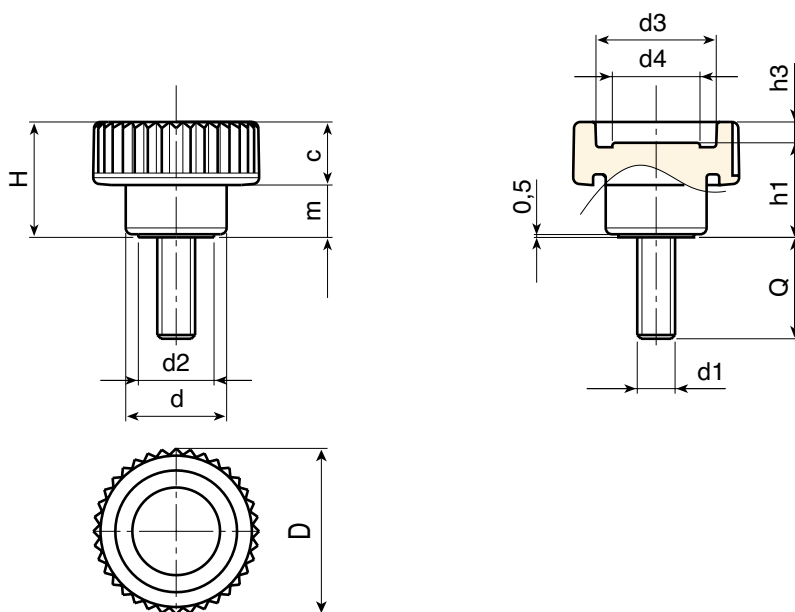
Black (RAL 9011).

Main Insert:

Stainless steel threaded stud (AISI 303)
(tolerance 6g).

SPECIAL REQUESTS:

- It is possible to supply inserts in different lengths or by special design, on request and for quantities.
- It is possible to supply colours as shown in the table on page H-23, on request and for quantities.



	art.	D	H	d	m	c	d2	d3	d4	h1	h3	LM	d1 6g	Q	
●	H76615.TM04X..01CIN	15	10,5	10	4,5	6	8	10	7,5	8,5	2	40	M04	A.R.	-
●	H76615.TM05X..01CIN	15	10,5	10	4,5	6	8	10	7,5	8,5	2	40	M05	A.R.	-
●	H76621.TM05X1601CIN	21	15	13	6,5	8,5	9,5	15	10,5	12,5	2,5	40	M05	16	9,5
●	H76621.TM06X..01CIN	21	15	13	6,5	8,5	9,5	15	10,5	12,5	2,5	40	M06	A.R.	-
●	H76626.TM06X..01CIN	26	18	16	8,5	9,5	12	19	13	15	3	80	M06	A.R.	-
●	H76626.TM08X2001CIN	26	18	16	8,5	9,5	12	19	13	15	3	80	M08	20	16,5
●	H76633.TM08X4001CIN	32	23	20	10,5	12,5	15	23	16	18	5	80	M08	40	36
●	H76633.TM10X..01CIN	32	23	20	10,5	12,5	15	23	16	18	5	80	M10	A.R.	-
●	H76640.TM08X..01CIN	40	28	25	12,5	15,5	18	28	21	22	6	100	M08	A.R.	-
●	H76640.TM10X..01CIN	40	28	25	12,5	15,5	18	28	21	22	6	100	M10	A.R.	-
●	H76640.TM12X..01CIN	40	28	25	12,5	15,5	18	28	21	22	6	100	M12	A.R.	-
●	H76640.TM14X..01CIN	40	28	25	12,5	15,5	18	28	21	22	6	100	M14	A.R.	-

Enter the stud length choice in the two .. of the article code. Lengths by request with 250 pieces minimum quantity.

LM = Maximum mouldable length.

A.R. = by request.

Presumable presence in the stock in %

90% ●

40% ●

5% ●



H - 9

ver. HUK.17-0120

H

H767



KNURLED HOLLOWED HANDWHEEL WITH THREADED FEMALE INSERT

Material:

Reinforced polyamide.
Oils and greases resistant.

Surface:

Satin.

Colour:

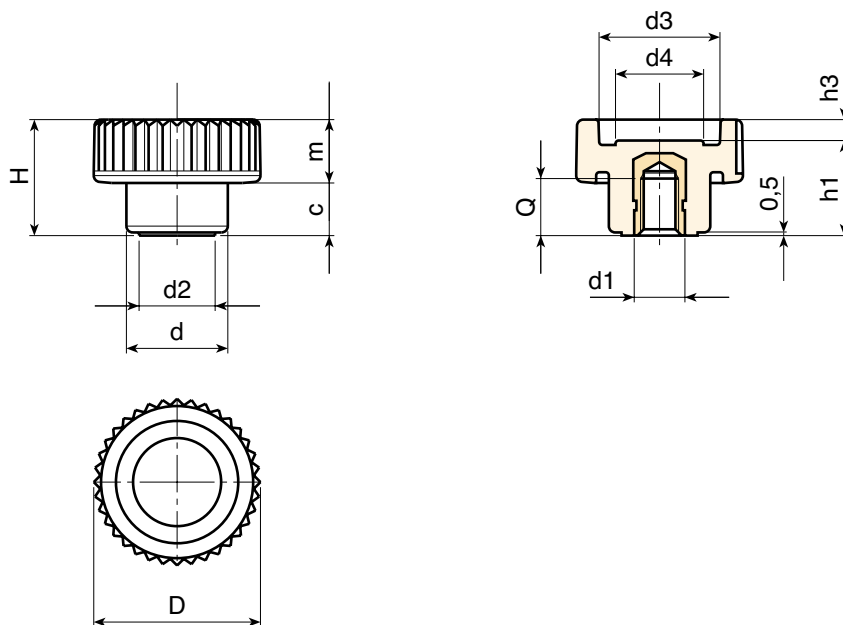
Black (RAL 9011).

Main Insert:

Brass blind threaded bush (tolerance 6H).

SPECIAL REQUEST:

- It is possible to supply the inserts in different materials, on request and for quantities.
- It is possible to supply colours as shown in the table at pag. H-23, on request and for quantities.



	art.	D	H	d	m	c	d2	d3	d4	h1	h3	d1 6H	Q	Δ g
●	H76721.TM0501	21	15	13	6,5	8,5	9,5	15	10,5	12,5	2,5	M05	7	5,5
●	H76721.TM0601	21	15	13	6,5	8,5	9,5	15	10,5	12,5	2,5	M06	7	6
●	H76726.TM0601	26	18	16	8,5	9,5	12	19	13	15	3	M06	9	8
●	H76726.TM0801	26	18	16	8,5	9,5	12	19	13	15	3	M08	8	8,5
●	H76733.TM0801	32	23	20	10,5	12,5	15	23	16	18	5	M08	11	15,5
●	H76733.TM1001	32	23	20	10,5	12,5	15	23	16	18	5	M10	10	16
●	H76740.TM0801	40	28	25	12,5	15,5	18	28	21	22	6	M08	14	27
●	H76740.TM1001	40	28	25	12,5	15,5	18	28	21	22	6	M10	14	28
●	H76740.TM1201	40	28	25	12,5	15,5	18	28	21	22	6	M12	12	29

H757



KNURLED SOLID HANDWHEEL WITH THREADED FEMALE INSERT

Material:

Reinforced polyamide.
Oils and greases resistant.

Surface:

Satin.

Colour:

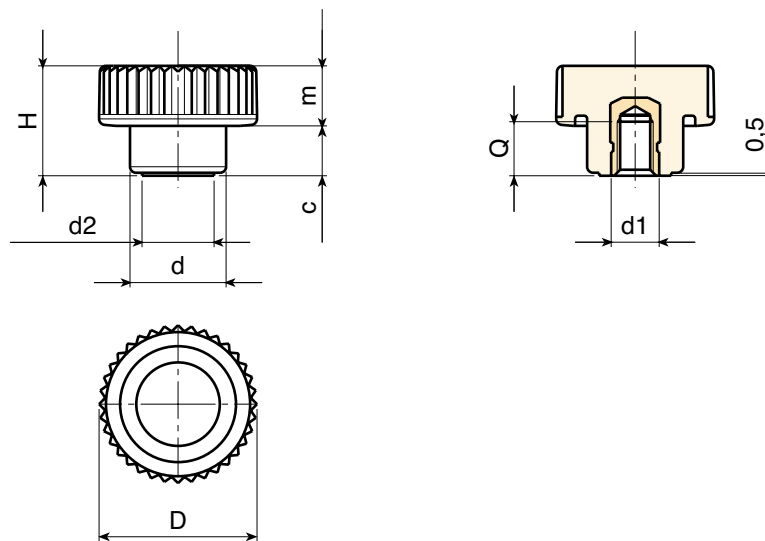
Black (RAL 9011).

Main Insert:

Brass blind threaded bush (tolerance 6H).

SPECIAL REQUEST:

- It is possible to supply the inserts in different materials, on request and for quantities.
- It is possible to supply colours as shown in the table at pag. H-23, on request and for quantities.



	art.	D	H	d	m	c	d2	d1 6H	Q	Δ g
●	H75726.TM0501	26	18	16	8,5	9,5	12	M05	6	9
●	H75726.TM0601	26	18	16	8,5	9,5	12	M06	9	10
●	H75726.TM0801	26	18	16	8,5	9,5	12	M08	8	11

H753



KNURLED SOLID HANDWHEEL WITH THREADED STUD

Material:

Reinforced polyamide.
Oils and greases resistant.

Surface:

Satin.

Colour:

Black (RAL 9011).

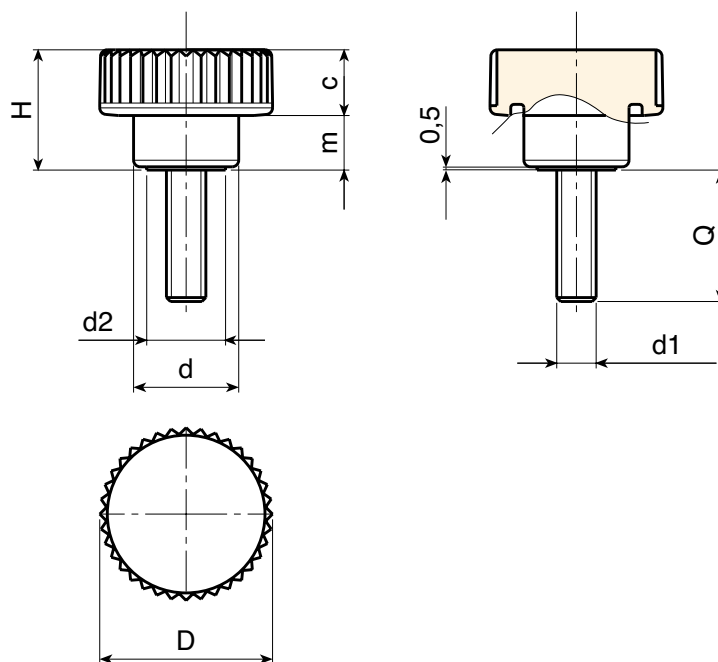
Main Insert:

Zinc plated steel threaded stud (tolerance 6g).



SPECIAL REQUESTS:

- It is possible to supply inserts in different lengths or by special design, on request and for quantities.
- It is possible to supply inserts in different materials, on request and for quantities.
- It is possible to supply colours as shown in the table on page H-23, on request and for quantities.



	art.	D	H	d	m	c	d2	LM	d1 6g	Q	g
●	H75326.TM05X..01	26	18	16	8,5	9,5	12	50	M05	A.R.	-
	H75326.TM06X..01	26	18	16	8,5	9,5	12	50	M06	20-25	13-14
	H75326.TM08X..01	26	18	16	8,5	9,5	12	50	M08	20-30	20-22

Enter the stud length choice in the two .. of the article code. Lengths by request with 250 pieces minimum quantity.

LM = Maximum mouldable length.

A.R. = by request.

H758



KNURLED HANDWHEEL WITH HUB AND THREADED FEMALE INSERT

Material:

Reinforced polyamide.
Oils and greases resistant.

Surface:

Satin.

Colour:

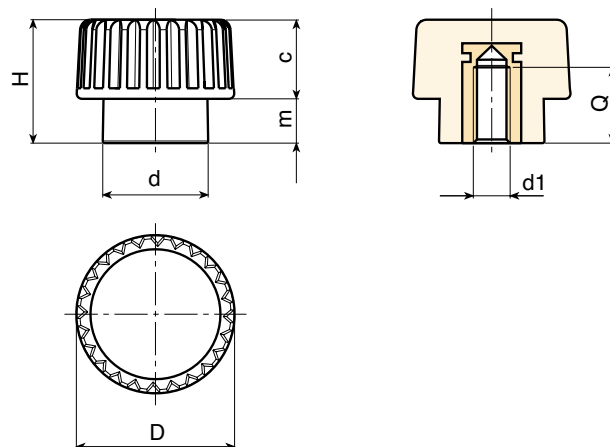
Black (RAL 9011).

Main Insert:

Brass blind threaded bush (tolerance 6H).

SPECIAL REQUEST:

- It is possible to supply the inserts in different materials, on request and for quantities.
- It is possible to supply colours as shown in the table at pag. H-23, on request and for quantities.



	art.	D	H	d	m	c	d1 6H	Q	g
●	H75815.TM0401	15	12	10	4,5	7,5	M04	7	4
●	H75815.TM0501	15	12	10	4,5	7,5	M05	7	4
●	H75815.TM0601	15	12	10	4,5	7,5	M06	7	4

H759



KNURLED HANDWHEEL WITH HUB AND THREADED STUD

Material:

Reinforced polyamide.
Oils and greases resistant.

Surface:

Satin.

Colour:

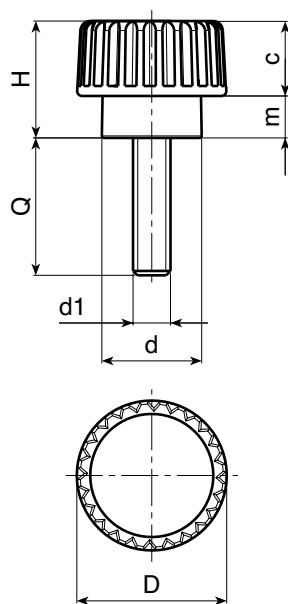
Black (RAL 9011).

Main Insert:

Zinc plated steel threaded stud (tolerance 6g).

SPECIAL REQUESTS:

- It is possible to supply inserts in different lengths or by special design, on request and for quantities.
- It is possible to supply inserts in different materials, on request and for quantities.
- It is possible to supply colours as shown in the table on page H-23, on request and for quantities.



art.	D	H	d	m	c	LM	d1 6g	Q	g
H75915.TM03X..01	15	12	10	4,5	7,5	70	M03	11-24	3-3,5
H75915.TM04X2001	15	12	10	4,5	7,5	70	M04	10-20-30	3,5-4-4,5
H75915.TM05X..01	15	12	10	4,5	7,5	70	M05	10-16-20-30	4-4,5-5,5-6,5
H75915.TM06X..01	15	12	10	4,5	7,5	70	M06	10-16-20	5-6-7,5

Enter the stud length choice in the two .. of the article code. Lengths by request with 250 pieces minimum quantity.

LM = Maximum mouldable length.

H760



KNURLED HANDWHEEL WITHOUT HUB AND THREADED STUD

Material:

Reinforced polyamide.
Oils and greases resistant.

Surface:

Satin.

Colour:

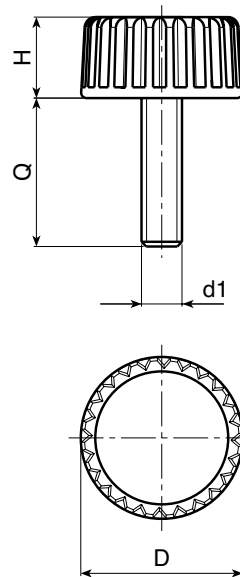
Black (RAL 9011).


Main Insert:

Zinc plated steel threaded stud (tolerance 6g).

SPECIAL REQUESTS:

- It is possible to supply inserts in different lengths or by special design, on request and for quantities.
- It is possible to supply inserts in different materials, on request and for quantities.
- It is possible to supply colours as shown in the table on page H-23, on request and for quantities.



	art.	D	H	LM	d1 6g	Q	⚖ g
	H76015.TM04X..01	15	8	77	M04	13-15-19-24	2-2-2,5-3
	H76015.TM05X..01	15	8	77	M05	15-19-24-29	4-4,5-5-5,5
	H76015.TM06X..01	15	8	77	M06	15-19-24-29	5,5-6,5-7-7,5

Enter the stud length choice in the two .. of the article code. Lengths by request with 250 pieces minimum quantity.

LM = Maximum mouldable length.

Presumable presence in the stock in % 
 90% ● 40% ● 5% ●

H770



KNURLED HANDWHEEL WITH THREADED FEMALE INSERT

Material:

Reinforced polyamide.
Oils and greases resistant.

Surface:

Satin.

Colour:

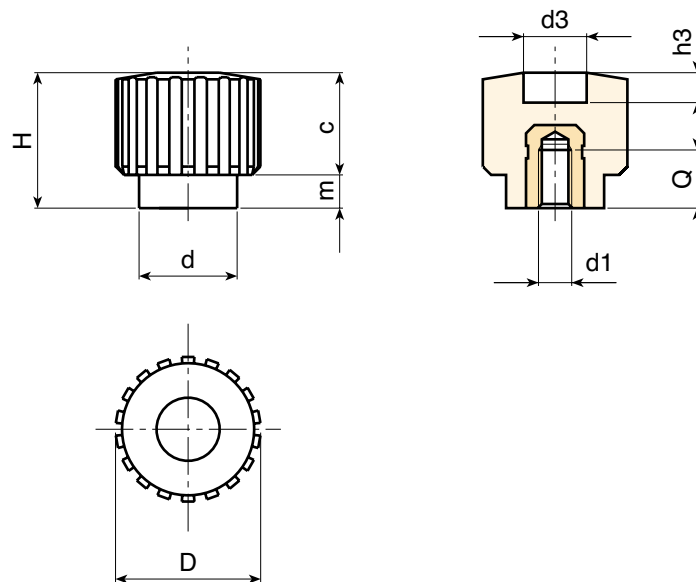
Black (RAL 9011).

Main Insert:

Brass blind threaded bush (tolerance 6H).

SPECIAL REQUEST:

- It is possible to supply the inserts in different materials, on request and for quantities.
- It is possible to supply colours as shown in the table at pag. H-23, on request and for quantities.



	art.	D	H	d	m	c	d3	h3	d1 6H	Q	g
●	H77018.TM0401	17,5	17,5	12	4	13,5	9	5	M04	7	5
●	H77018.TM0501	17,5	17,5	12	4	13,5	9	5	M05	7	5
●	H77018.TM0601	17,5	17,5	12	4	13,5	9	5	M06	7	5

H771



KNURLED HANDWHEEL WITH THREADED STUD

Material:
Reinforced polyamide.
Oils and greases resistant.

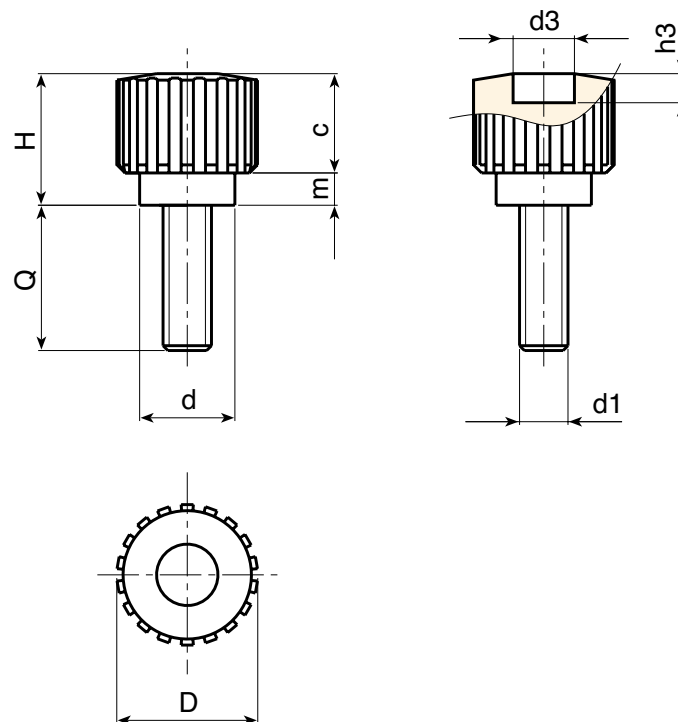
Surface:
Satin.

Colour:
Black (RAL 9011).

Main Insert:
Zinc plated steel threaded stud (tolerance 6g).

SPECIAL REQUESTS:

- It is possible to supply inserts in different lengths or by special design, on request and for quantities.
- It is possible to supply inserts in different materials, on request and for quantities.
- It is possible to supply colours as shown in the table on page H-23, on request and for quantities.



art.	D	H	d	m	c	d3	h3	LM	d1 6g	Q	⚖ g
H77118.TM04X..01	17,5	17,5	12	4	13,5	9	5	50	M04	10-16-30	6-6,5-8
H77118.TM05X..01	17,5	17,5	12	4	13,5	9	5	60	M05	10-16-20	6,5-7-8
H77118.TM06X..01	17,5	17,5	12	4	13,5	9	5	60	M06	16-20	8,5-9

Enter the stud length choice in the two .. of the article code. Lengths by request with 250 pieces minimum quantity.

LM = Maximum mouldable length.

Presumable presence in the stock in %
 90% ● 40% ● 5% ●

H772



KNURLED HANDWHEEL WITH RIGHT THROUGH THREADED FEMALE INSERT

Material:

Reinforced polyamide.
Oils and greases resistant.

Surface:

Satin.

Colour:

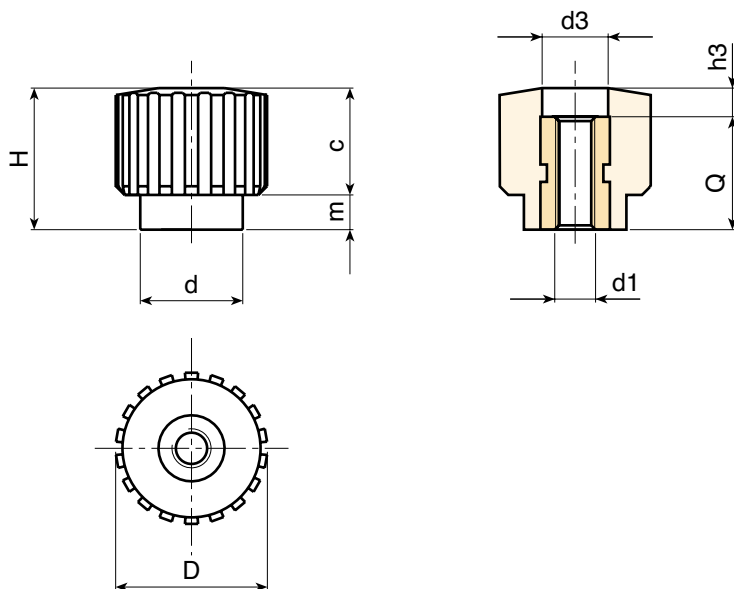
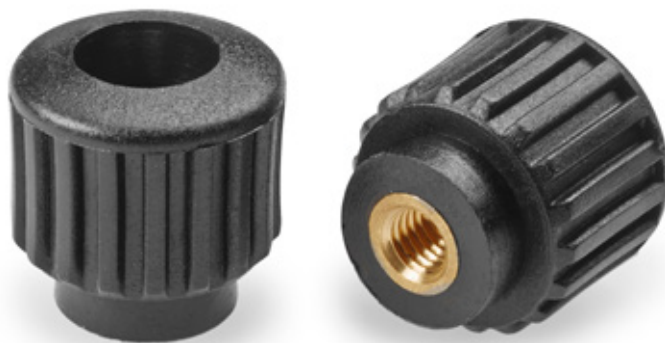
Black (RAL 9011).

Main Insert:

Brass right through threaded bush (tolerance 6H).

SPECIAL REQUEST:

- It is possible to supply the inserts in different materials, on request and for quantities.
- It is possible to supply colours as shown in the table at pag. H-23, on request and for quantities.



	art.	D	H	d	m	c	d3	h3	d1 6H	Q	△ g
●	H77218.TM0401	17,5	17,5	12	4	13,5	9	4,5	M04	13	5,5
●	H77218.TM0501	17,5	17,5	12	4	13,5	9	4,5	M05	13	5,5
●	H77218.TM0601	17,5	17,5	12	4	13,5	9	4,5	M06	13	5,5

H773



KNURLED HANDWHEEL WITH SCREWDRIVERS SLOT AND THREADED FEMALE INSERT

Material:

Reinforced polyamide.
Oils and greases resistant.

Surface:

Satin.

Colour:

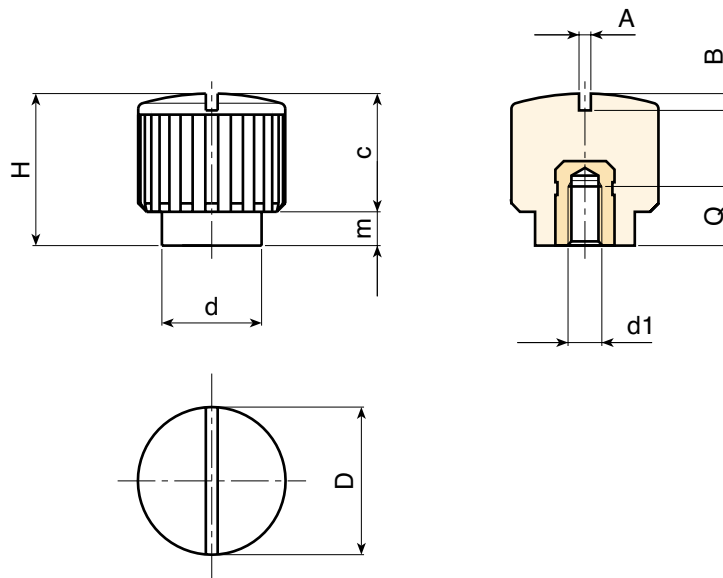
Black (RAL 9011).

Main Insert:

Brass blind threaded bush (tolerance 6H).

SPECIAL REQUEST:

- It is possible to supply the inserts in different materials, on request and for quantities.
- It is possible to supply colours as shown in the table at pag. H-23, on request and for quantities.



	art.	D	H	d	m	c	A	B	d1 6H	Q	⚖️ g
●	H77318.TM0401	17,5	18	12	4	14	1,2	1,5	M04	7	6,5
●	H77318.TM0501	17,5	18	12	4	14	1,2	1,5	M05	7	7
●	H77318.TM0601	17,5	18	12	4	14	1,2	1,5	M06	7	7

H774



KNURLED HANDWHEEL WITH SCREWDRIVERS SLOT AND THREADED STUD

Material:

Reinforced polyamide.
Oils and greases resistant.

Surface:

Satin.

Colour:

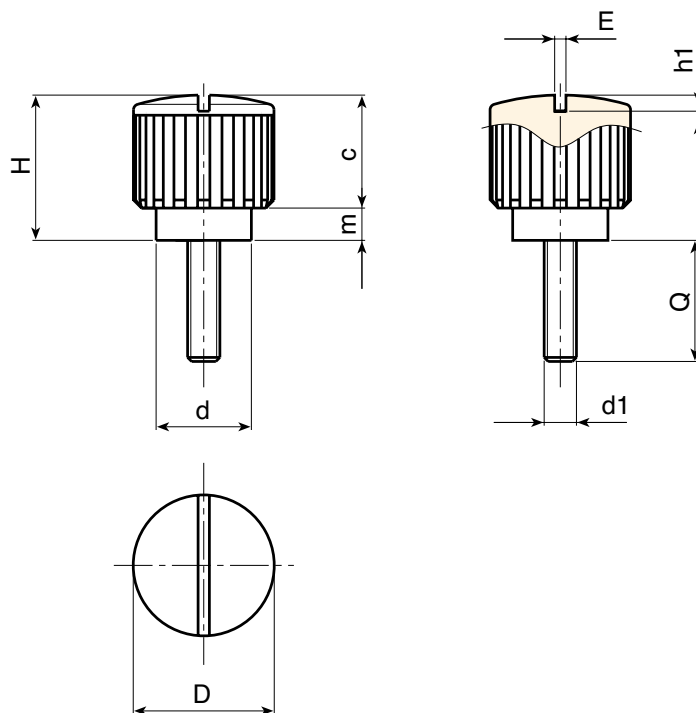
Black (RAL 9011).

Main Insert:

Zinc plated steel threaded stud (tolerance 6g).

SPECIAL REQUESTS:

- It is possible to supply inserts in different lengths or by special design, on request and for quantities.
- It is possible to supply inserts in different materials, on request and for quantities.
- It is possible to supply colours as shown in the table on page H-23, on request and for quantities.



	art.	D	H	d	m	c	A	B	LM	d1 6g	Q	g
●	H77418.TM04X3001	17,5	18	12	4	14	1,2	1,5	50	M04	30	7,5
●	H77418.TM05X..01	17,5	18	12	4	14	1,2	1,5	60	M05	A.R.	-
●	H77418.TM06X..01	17,5	18	12	4	14	1,2	1,5	60	M06	A.R.	-

Enter the stud length choice in the two .. of the article code. Lengths by request with 250 pieces minimum quantity.

LM = Maximum mouldable length.

A.R. = by request.

H172



KNURLED HANDWHEEL WITH SCREWDRIVERS SLOT AND THREADED STUD

Material:

Reinforced polyamide.
Oils and greases resistant.

Surface:

Satin.

Colour:

Black (RAL 9011).

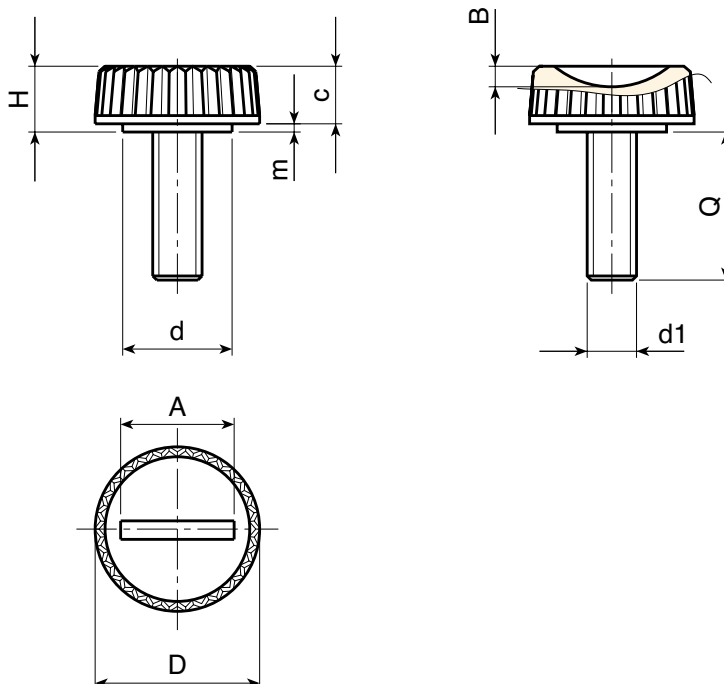
Main Insert:

Zinc plated steel threaded stud (tolerance 6g).



SPECIAL REQUESTS:

- It is possible to supply inserts in different lengths or by special design, on request and for quantities.
- It is possible to supply inserts in different materials, on request and for quantities.
- It is possible to supply colours as shown in the table on page H-23, on request and for quantities.



	art.	D	H	d	m	c	A	B	LM	d1 6g	Q	g
●	H17220.TM06X..01	20	8	13,5	1	7	14	2,5	39	M06	A.R.	-

Enter the stud length choice in the two .. of the article code. Lengths by request with 500 pieces minimum quantity.

LM = Maximum mouldable length.

A.R. = by request.

Presumable presence in the stock in %

90% ●

40% ●

5% ●



H - 21

ver. HUK.17-0120

H

H171 CON



KNURLED HANDWHEEL WITH SHORT HUB AND THREADED FEMALE INSERT

Material: Reinforced polyamide. Oils and greases resistant.

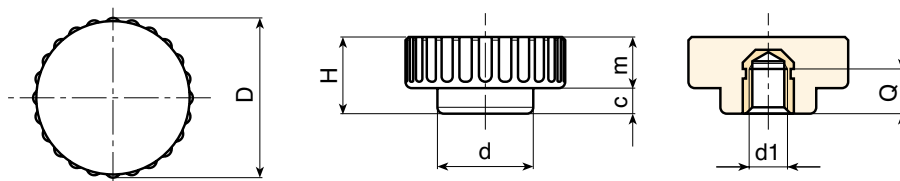
Surface: Satin.

Colour: Black (RAL 9011).

Main Insert: Brass blind threaded bush (tolerance 6H).

SPECIAL REQUEST:

- None.



	art.	D	H	d	m	c	d1 6H	Q	g
●	H17125.TM0601CON	25	12	15,5	4	8	M06	7	7
●	H17125.TM0801CON	25	12	15,5	4	8	M08	7	8

H171



KNURLED HANDWHEEL WITH SHORT HUB AND THREADED STUD

Material: Reinforced polyamide. Oils and greases resistant.

Surface: Satin.

Colour: Black (RAL 9011).

Main Insert: Zinc plated steel threaded stud (tolerance 6g).

SPECIAL REQUESTS:












- It is possible to supply inserts in different lengths or by special design, on request and for quantities.



	art.	D	H	d	m	c	LM	d1 6g	Q	g
	H17125.TM06X2001	25	12	15,5	4	8	40	M06	20	11
	H17125.TM08X2001	25	12	15,5	4	8	40	M08	20	15

COLOUR CHART

RAL COLOURS CODING

Colour		RAL	Cod.
Black		9011	01
Orange		2004	02
Orange		2011	03
White		9010	04
Blue		5015	07
Yellow		1007	09
Yellow		1021	10
Grey		7024	12
Grey		7035	13
Red		3000	16
Green		6024	17

H

AUTHORISED RESELLER

BOTECO Srl

www.boteco.it

36010 ZANE' (VI) - ITALY

Via L. Pettinà 16 (side street of Via Cuso)

Switchboard Tel.:+39-0445-316411 - Fax:+39-0445-316400

Sales Fax:+39-0445-316401 mail: commerciale@boteco.it

Administration Fax:+39-0445-316402 mail: amministrazione@boteco.it

Technical Fax:+39-0445-316404 mail: tecnico@boteco.it

Certified Mail Box: boteco@pec.botecopec.it

