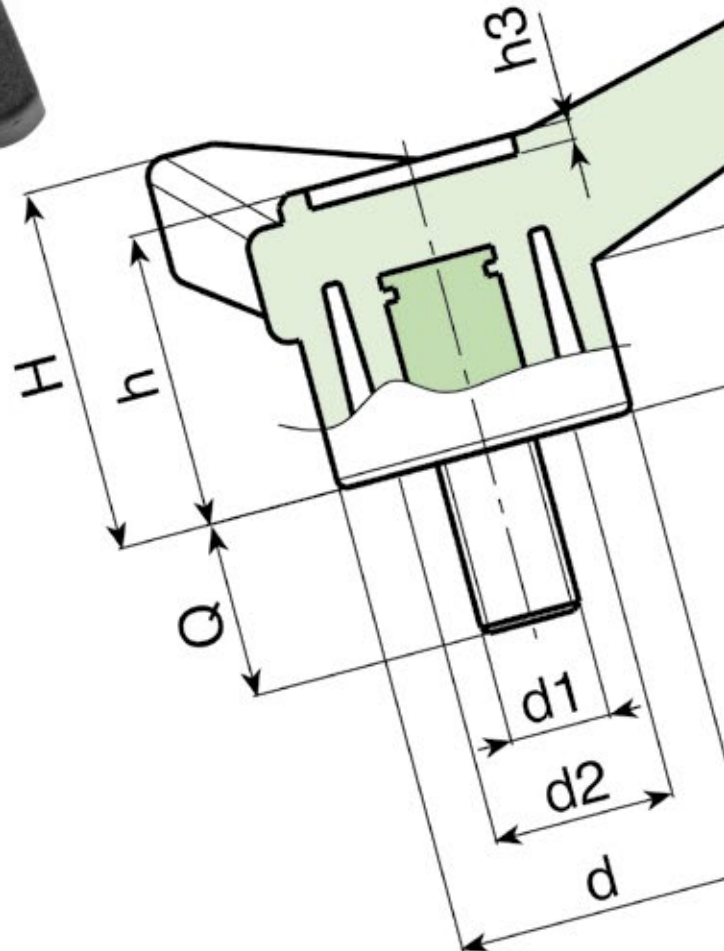
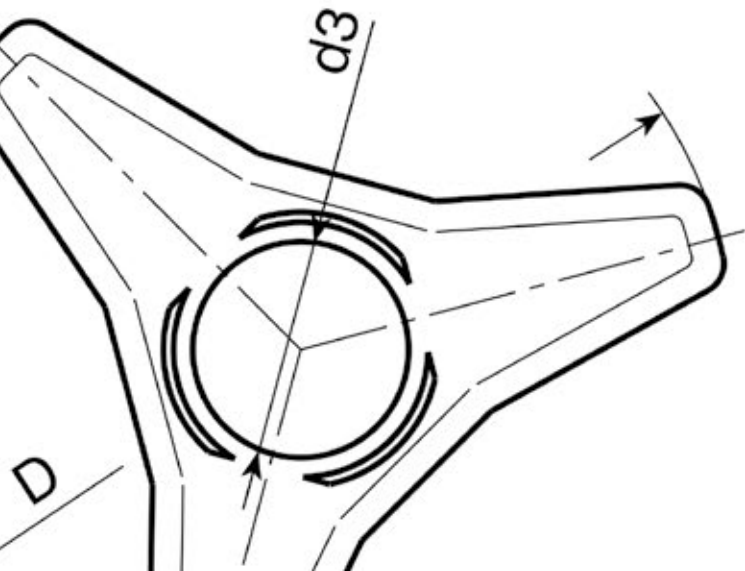




BOTTECO[®]

Family F

SOLID LOCKING HANDWHEELS



F210



DUROPLAST SOLID CROSS KNOB WITH THREADED BORE INSERT

Material:
Phenolic resin.
Oils and greases resistant.
High temperatures resistant.

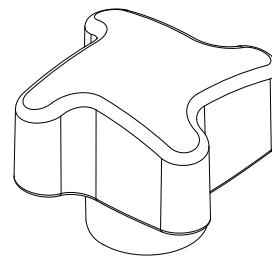
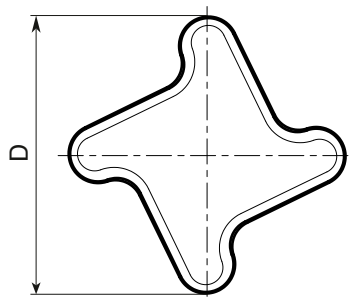
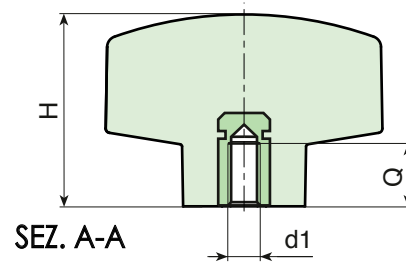
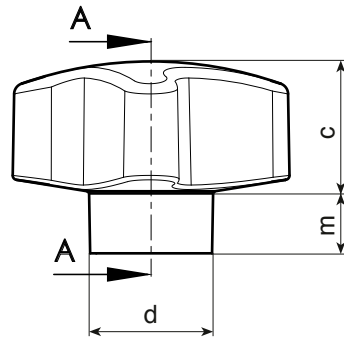
Surface:
Glossy.

Colour:
Black (RAL 9011).

Main insert:
Brass blind threaded bore bush, (thread tolerance 6H).

SPECIAL REQUESTS:

- None.



Art.	D	d	H	m	c	d1 6H	Q	g
F21030.BM0601	30	16	22	5,5	16,5	M06	10	
F21040.BM0601	40	21	26	5	21	M06	10	
F21040.BM0801	40	21	26	5	21	M08	13,5	28
F21040.BM1001	40	21	26	5	21	M10	15	
F21050.BM0801	50	23	31	7	24	M08	15	
F21050.BM1001	50	23	31	7	24	M10	15	
F21050.BM1201	50	23	31	7	24	M12	18	

F200



DUROPLAST SOLID LOBED KNOB WITH THREADED BORE INSERT

Material:

Phenolic resin.
Oils and greases resistant.
High temperatures resistant.

Surface:

Glossy.

Colour:

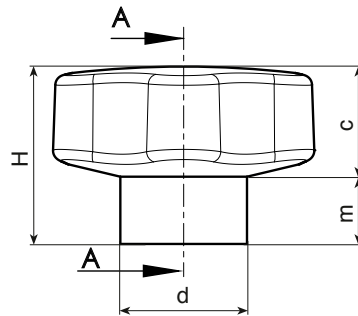
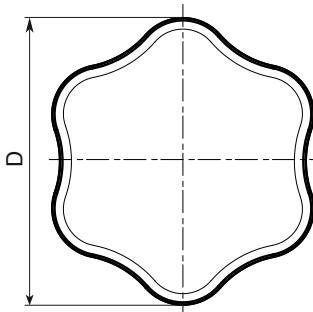
Black (RAL 9011).

Main insert:

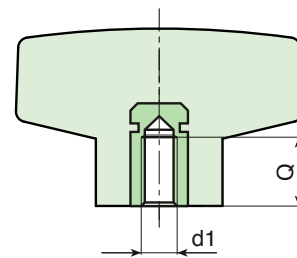
Brass blind threaded bore bush, (thread tolerance 6H).

SPECIAL REQUESTS:

- None.



SEZ. A-A



	Art.	D	d	H	m	c	d1 6H	Q	g
●	F20025.BM0401	25	15	20	9	11	M04	7,5	
●	F20025.BM0501	25	15	20	9	11	M05	8	
●	F20025.BM0601	25	15	20	9	11	M06	10	
●	F20030.BM0401	30	17	25	11	14	M04	7,5	
●	F20030.BM0501	30	17	25	11	14	M05	10	
●	F20030.BM0601	30	17	25	11	14	M06	10	
●	F20040.BM0501	40	21	30	13	17	M05	10	
●	F20040.BM0601	40	21	30	13	17	M06	10	
●	F20040.BM0801	40	21	30	13	17	M08	13,5	
●	F20040.BM1001	40	21	30	13	17	M10	15	
●	F20050.BM0601	50	23	33	13	20	M06	13	
●	F20050.BM0801	50	23	33	13	20	M08	15	
●	F20050.BM1001	50	23	33	13	20	M10	15	
●	F20050.BM1201	50	23	33	13	20	M12	18	
●	F20060.BM0801	60	28	37	15	22	M08	15	
●	F20060.BM1001	60	28	37	15	22	M10	15	
●	F20060.BM1201	60	28	37	15	22	M12	18	
●	F20060.BM1401	60	28	37	15	22	M14	20	
●	F20070.BM1001	70	30	41	17	24	M10	15	
●	F20070.BM1201	70	30	41	17	24	M12	18	
●	F20070.BM1401	70	30	41	17	24	M14	20	
●	F20070.BM1601	70	30	41	17	24	M16	20	
●	F20080.BM1201	80	32	47	19	28	M12	18	
●	F20080.BM1401	80	32	47	19	28	M14	20	
●	F20080.BM1601	80	32	47	19	28	M16	20	

Presumable presence in the stock in %

90% ● 40% ● 5% ●

F202



DUROPLAST SOLID LOBED KNOB WITH THREADED STUD

Material:
Phenolic resin.
Oils and greases resistant.
High temperatures resistant.

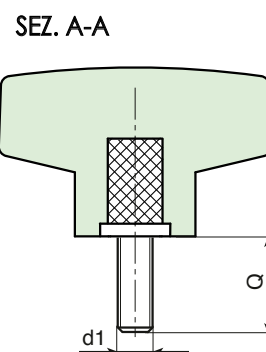
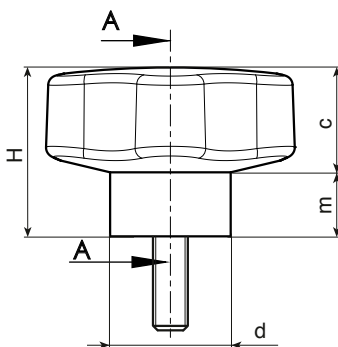
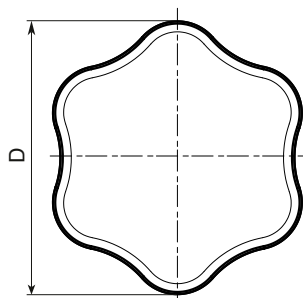
Surface:
Glossy.

Colour:
Black (RAL 9011).

Main insert:
Zinc plated steel threaded stud, (thread tolerance 6g).

SPECIAL REQUESTS:

- None.



Art.	D	d	H	m	c	LM	d1 6H	Q	g
F20225.BM04X..01	25	15	20	9	11	60	M04	10-20-30-40-50-60	
F20225.BM05X..01	25	15	20	9	11	60	M05	10-20-30-40-50-60	
F20225.BM06X..01	25	15	20	9	11	60	M06	10-20-30-40-50-60	
F20230.BM04X..01	30	17	25	11	14	60	M04	10-20-30-40-50-60	
F20230.BM05X..01	30	17	25	11	14	60	M05	10-20-30-40-50-60	
F20230.BM06X..01	30	17	25	11	14	60	M06	10-20-30-40-50-60	
F20240.BM05X..01	40	21	30	13	17	60	M05	10-20-30-40-50-60	
F20240.BM06X..01	40	21	30	13	17	60	M06	10-20-30-40-50-60	
F20240.BM08X..01	40	21	30	13	17	60	M08	10-20-30-40-50-60	
F20240.BM10X..01	40	21	30	13	17	60	M10	10-20-30-40-50-60	
F20250.BM06X..01	50	23	33	13	20	60	M06	10-20-30-40-50-60	
F20250.BM08X..01	50	23	33	13	20	60	M08	10-20-30-40-50-60	
F20250.BM10X..01	50	23	33	13	20	60	M10	10-20-30-40-50-60	
F20250.BM12X..01	50	23	33	13	20	60	M12	10-20-30-40-50-60	
F20260.BM08X..01	60	28	37	15	22	60	M08	10-20-30-40-50-60	
F20260.BM10X..01	60	28	37	15	22	60	M10	10-20-30-40-50-60	
F20260.BM12X..01	60	28	37	15	22	60	M12	10-20-30-40-50-60	
F20260.BM14X..01	60	28	37	15	22	60	M14	10-20-30-40-50-60	
F20270.BM10X..01	70	30	41	17	24	60	M10	10-20-30-40-50-60	
F20270.BM12X..01	70	30	41	17	24	60	M12	10-20-30-40-50-60	
F20270.BM14X..01	70	30	41	17	24	60	M14	10-20-30-40-50-60	
F20270.BM16X..01	70	30	41	17	24	60	M16	10-20-30-40-50-60	
F20280.BM12X..01	80	32	47	19	28	60	M12	10-20-30-40-50-60	
F20280.BM14X..01	80	32	47	19	28	60	M14	10-20-30-40-50-60	
F20280.BM16X..01	80	32	47	19	28	60	M16	10-20-30-40-50-60	

F204



DUROPLAST SOLID LOBED KNOB WITH THROUGH THREADED BORE INSERT

Material:
Phenolic resin.
Oils and greases resistant.
High temperatures resistant.

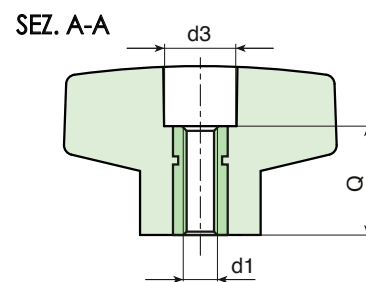
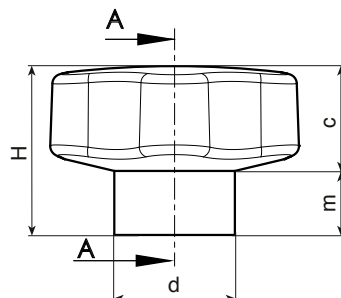
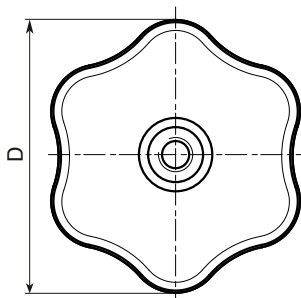
Surface:
Glossy.

Colour:
Black (RAL 9011).

Main insert:
Brass right through threaded bore bush,
(thread tolerance 6H).

SPECIAL REQUESTS:

- None.



	Art.	D	d	H	m	c	d3	d1 6H	Q	Δg
●	F20440.BM0601	40	21	30	13	17	13	M06	17	27
●	F20440.BM0801	40	21	30	13	17	13	M08	17	26
●	F20440.BM1001	40	21	30	13	17	13	M10	17	24
●	F20460.BM1001	60	28	37	15	22	15	M10	26	88
●	F20460.BM1201	60	28	37	15	22	15	M12	26	85

F110



SOLID 6 LOBE KNOB WITH FEMALE THREADED INSERT

Material:
Reinforced polyamide.
Oils and greases resistant.

Surface:
Satin.

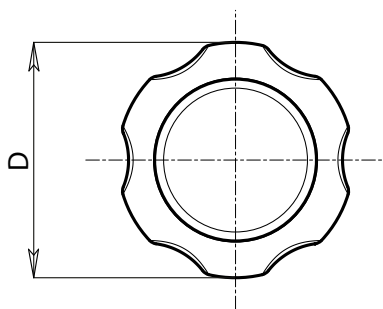
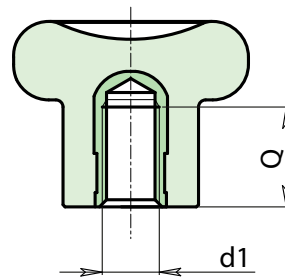
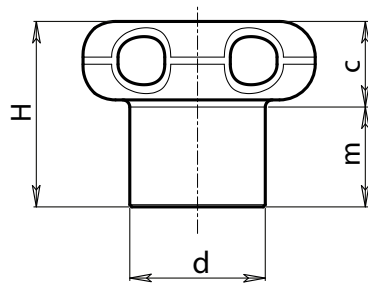
Colour:
Black (RAL 9011).

Main Insert:
Brass blind threaded bush (tolerance 6H).



SPECIAL REQUESTS:

- It is possible to supply the inserts in different materials, on request and for quantities.
- It is possible to supply colours as shown in the table at pag. F-43, on request and for quantities.



Art.	D	d	H	m	c	d1 6H	Q	g
F110022.TM0401	22	12	17,5	11	6,5	M04	8	5,5
F110022.TM0501	22	12	17,5	11	6,5	M05	8	6,5
F110027.TM0501	27	14	22	13	9	M05	10	9
F110027.TM0601	27	14	22	13	9	M06	10	9,5
F110033.TM0801	33	19	26	15	11	M08	13	16
F110033.TM1001	33	19	26	15	11	M10	13	17

F111



SOLID 6 LOBE KNOB WITH MALE THREADED STUD

Material:
Reinforced polyamide.
Oils and greases resistant.

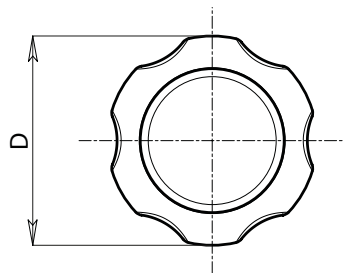
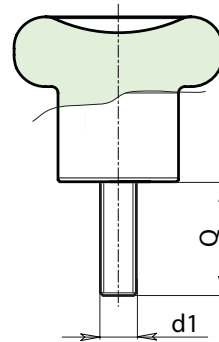
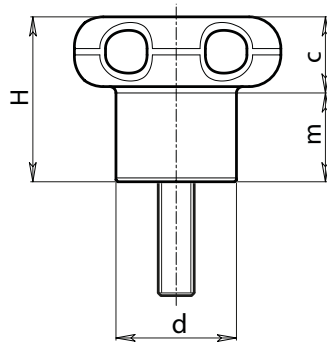
Surface:
Satin.

Colour:
Black (RAL 9011).

Main Insert:
Zinc plated steel threaded stud (tolerance 6g).

SPECIAL REQUESTS:

- It is possible to supply inserts in different lengths or by special design, on request and for quantities.
- It is possible to supply inserts in different materials, on request and for quantities.
- It is possible to supply colours as shown in the table on page F-43, on request and for quantities.



Art.	D	d	H	m	c	d1 6g	Q	LM	g
● F111022.TM04X..01	22	12	17,5	11	6,5	M04	16-30	50	6-7
● F111022.TM05X..01	22	12	17,5	11	6,5	M05	16-30	50	7-8
● F111027.TM05X..01	27	14	22	13	9	M05	20-40	60	10-11
● F111027.TM06X..01	27	14	22	13	9	M06	20-40	60	12-13
● F111033.TM08X..01	33	19	26	15	11	M08	20-40	70	18-22
● F111033.TM10X..01	33	19	26	15	11	M10	20-50	70	24-27

Enter the stud length choice in the two .. of the article code. Lengths by request with 50 pieces minimum quantity.

LM = Maximum mouldable length.

Presumable presence in the stock in %
 90% ● 40% ● 5% ●

F175



SOLID 6 LOBE HANDWHEEL WITH FEMALE THREADED INSERT

Material:
Reinforced polyamide.
Oils and greases resistant.

Surface:
Satin.

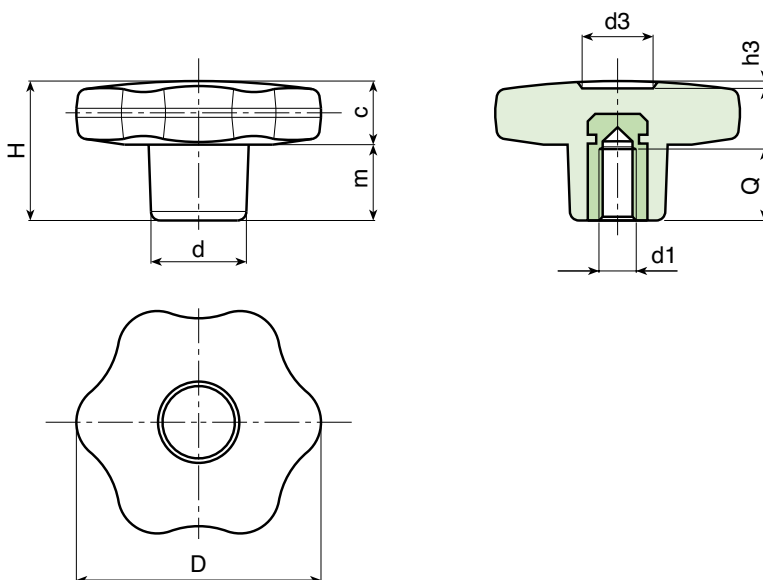
Colour:
Black (RAL 9011).

Main Insert:
Brass blind threaded bush (tolerance 6H).



SPECIAL REQUEST:

- It is possible to supply the inserts in different materials, on request and for quantities.
- It is possible to supply colours as shown in the table at pag. F-43, on request and for quantities.



SSS	Art.	D	H	d	c	m	d3	h3	d1 6H	Q	g
●	F17530.TM0401	30	22	15	11	11	9	1,5	M04	7	11,5
●	F17530.TM0501	30	22	15	11	11	9	1,5	M05	14	11,5
●	F17530.TM0601	30	22	15	11	11	9	1,5	M06	10	12
●	F17530.TM0801	30	22	15	11	11	9	1,5	M08	14	13,5
●	F17530.TM1001	30	22	15	11	11	9	1,5	M10	14	14
●	F17540.TM0501	40	24,5	17	12	12,5	12	1	M05	14	22
●	F17540.TM0601	40	24,5	17	12	12,5	12	1	M06	16	22
●	F17540.TM0801	40	24,5	17	12	12,5	12	1	M08	14	21,5
●	F17540.TM1001	40	24,5	17	12	12,5	12	1	M10	14	21
●	F17550.TM0601	50	29	20	14	15	14,5	1,5	M06	16	36
●	F17550.TM0801	50	29	20	14	15	14,5	1,5	M08	14	36
●	F17550.TM1001	50	29	20	14	15	14,5	1,5	M10	14	37
●	F17550.TM1201	50	29	20	14	15	14,5	1,5	M12	18	39
●	F17560.TM0801	60	34	24	16	18	18	1,5	M08	19	59
●	F17560.TM1001	60	34	24	16	18	18	1,5	M10	21	59
●	F17560.TM1201	60	34	24	16	18	18	1,5	M12	18	62
●	F17560.TM1401	60	34	24	16	18	18	1,5	M14	19	63

F175 CIN



INOX

SOLID 6 LOBE HANDWHEEL WITH FEMALE STAINLESS STEEL THREADED INSERT

Material:

Reinforced polyamide.
Oils and greases resistant.

Surface:

Satin.

Colour:

Black (RAL 9011).

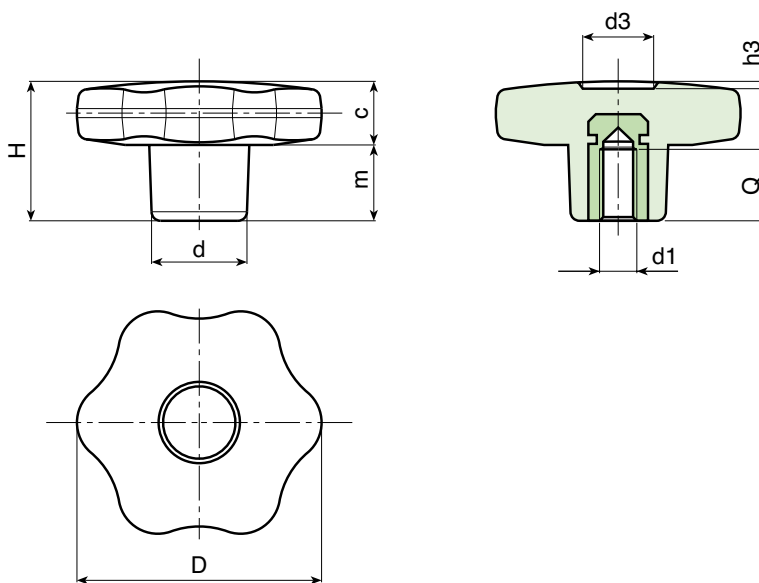
Main Insert:

Stainless steel blind threaded bush (AISI 303)
(tolerance 6H).



SPECIAL REQUEST:

- It is possible to supply colours as shown in the table at pag. F-43, on request and for quantities.



Art.	D	H	d	c	m	d3	h3	d1 6H	Q	g
● F17530.TM0501CIN	30	22	15	11	11	9	1,5	M05	14	11,5
● F17530.TM0601CIN	30	22	15	11	11	9	1,5	M06	10	12
● F17530.TM0801CIN	30	22	15	11	11	9	1,5	M08	14	13,5
● F17540.TM0601CIN	40	24,5	17	12	12,5	12	1	M06	16	22
● F17540.TM0801CIN	40	24,5	17	12	12,5	12	1	M08	14	21,5
● F17540.TM1001CIN	40	24,5	17	12	12,5	12	1	M10	14	21
● F17550.TM0801CIN	50	29	20	14	15	14,5	1,5	M08	14	36
● F17550.TM1001CIN	50	29	20	14	15	14,5	1,5	M10	14	37
● F17550.TM1201CIN	50	29	20	14	15	14,5	1,5	M12	13	39
● F17560.TM0801CIN	60	34	24	16	18	18	1,5	M08	19	59
● F17560.TM1001CIN	60	34	24	16	18	18	1,5	M10	21	59
● F17560.TM1201CIN	60	34	24	16	18	18	1,5	M12	18	62

F176



SOLID 6 LOBE HANDWHEEL WITH SMOOTH BORED INSERT

Material:
Reinforced polyamide.
Oils and greases resistant.

Surface:
Satin.

Colour:
Black (RAL 9011).

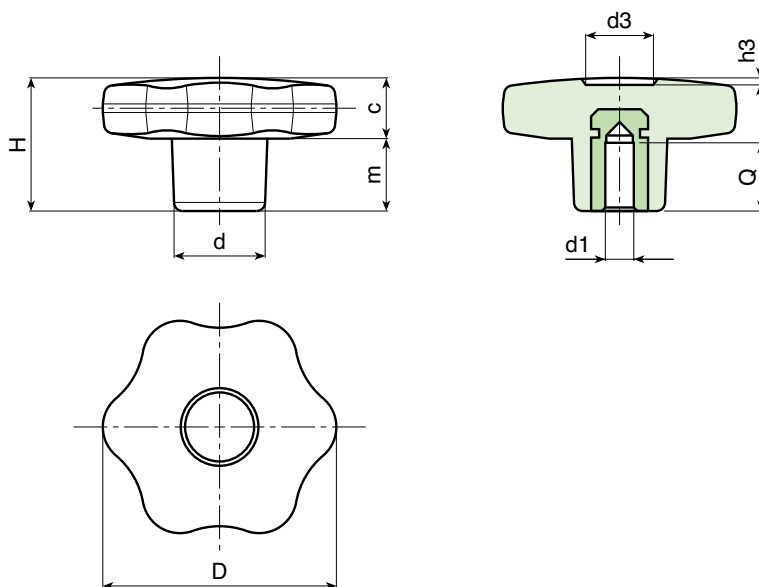
Main Insert:
Brass insert with smooth blind hole (tolerance H7).

(*) Zinc plated steel insert with smooth blind hole (tolerance H10).

ATTENTION: bore cannot be enlarged.

SPECIAL REQUEST:

- It is possible to supply the inserts in different materials, on request and for quantities.
- It is possible to supply colours as shown in the table at pag. F-43, on request and for quantities.



	Art.	D	H	d	c	m	d3	h3	d1 H7	Q	△ g
●	F17630.TD0601	30	22	15	11	11	9	1,5	06	15	17
●	F17630.TD0801	30	22	15	11	11	9	1,5	08	15	19
●	F17640.TD0601	40	24,5	17	12	12,5	12	1	06	15	24
●	F17640.TD0801	40	24,5	17	12	12,5	12	1	08	15	26
●	F17640.TD1001	40	24,5	17	12	12,5	12	1	10	17	28
●	F17650.TD0601	50	29	20	14	15	14,5	1,5	06	15	39
●	F17650.TD0801	50	29	20	14	15	14,5	1,5	08	15	41
●	F17650.TD1001	50	29	20	14	15	14,5	1,5	10	17	42
●	F17660.TD0801	60	34	24	16	18	18	1,5	(*) 08	18	78
●	F17660.TD1001	60	34	24	16	18	18	1,5	(*) 10	25	73
●	F17660.TD1201	60	34	24	16	18	18	1,5	(*) 12	22	75

F177



SOLID 6 LOBE HANDWHEEL WITH RIGHT THROUGH FEMALE THREADED INSERT

Material:
Reinforced polyamide.
Oils and greases resistant.

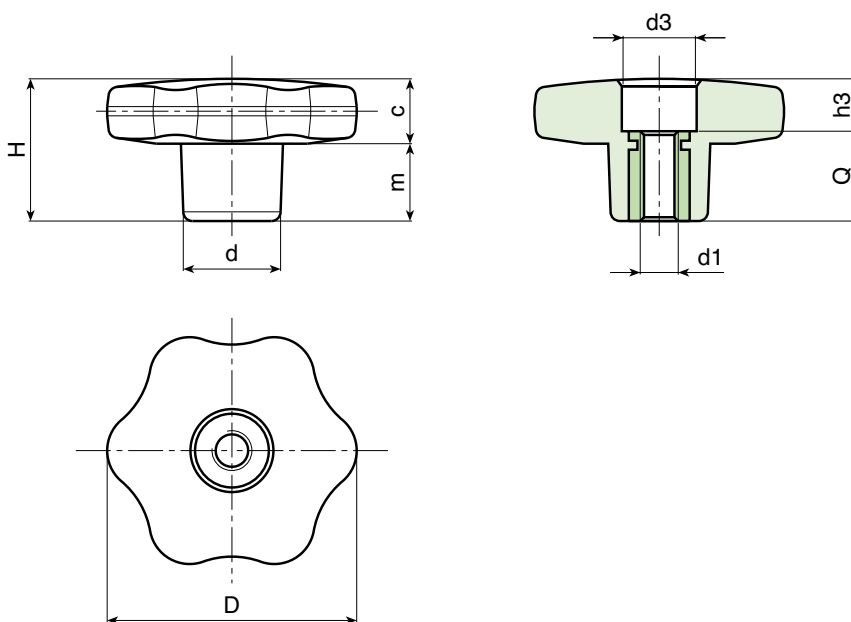
Surface:
Satin.

Colour:
Black (RAL 9011).

Main Insert:
Brass right through threaded bush (tolerance 6H).

SPECIAL REQUEST:

- It is possible to supply the inserts in different materials, on request and for quantities.
- It is possible to supply colours as shown in the table at pag. F-43, on request and for quantities.



Art.	D	H	d	c	m	d3	h3	d1 6H	Q	g
F17730.TM0501	30	22	15	11	11	11	4	M05	18	12
F17730.TM0601	30	22	15	11	11	11	4	M06	18	13
F17730.TM0801	30	22	15	11	11	11	4	M08	18	13
F17730.TM1001	30	22	15	11	11	11	4	M10	18	14
F17740.TM0601	40	24,5	17	12	12,5	12	6	M06	18	20
F17740.TM0801	40	24,5	17	12	12,5	12	6	M08	18	21
F17740.TM1001	40	24,5	17	12	12,5	12	6	M10	18	22
F17750.TM0601	50	29	20	14	15	14	11	M06	18	33
F17750.TM0801	50	29	20	14	15	14	11	M08	18	34
F17750.TM1001	50	29	20	14	15	14	11	M10	18	35
F17750.TM1201	50	29	20	14	15	14	11	M12	18	35
F17760.TM0801	60	34	24	16	18	15	16	M08	18	54
F17760.TM1001	60	34	24	16	18	15	16	M10	18	55
F17760.TM1201	60	34	24	16	18	15	16	M12	18	55
F17760.TM1401	60	34	24	16	18	15	16	M14	18	56

F177 PIN



INOX

SOLID 6 LOBE HANDWHEEL WITH RIGHT THROUGH FEMALE THREADED STAINLESS STEEL INSERT

Material:

Reinforced polyamide.
Oils and greases resistant.

Surface:

Satin.

Colour:

Black (RAL 9011).

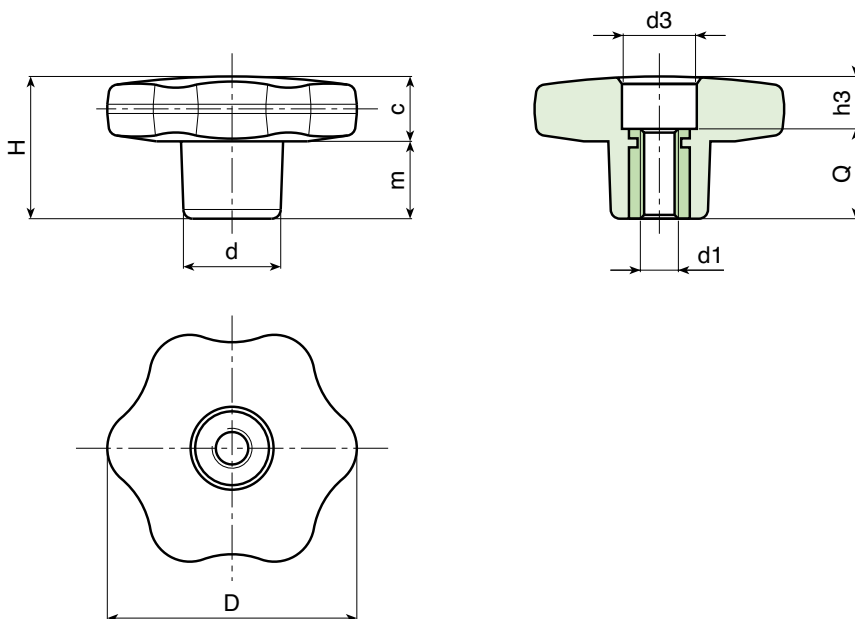
Main Insert:

Stainless steel right through threaded bush (AISI 303) (tolerance 6H).



SPECIAL REQUEST:

- It is possible to supply colours as shown in the table at pag. F-43, on request and for quantities.



	Art.	D	H	d	c	m	d3	h3	d1 6H	Q	g
●	F17730.TM0501PIN	30	22	15	11	11	11	4	M05	18	12
●	F17730.TM0601PIN	30	22	15	11	11	11	4	M06	18	13
●	F17730.TM0801PIN	30	22	15	11	11	11	4	M08	18	13
●	F17740.TM0601PIN	40	24,5	17	12	12,5	12	6	M06	18	20
●	F17740.TM0801PIN	40	24,5	17	12	12,5	12	6	M08	18	21
●	F17740.TM1001PIN	40	24,5	17	12	12,5	12	6	M10	18	22
●	F17750.TM0801PIN	50	29	20	14	15	14	11	M08	18	34
●	F17750.TM1001PIN	50	29	20	14	15	14	11	M10	18	35
●	F17750.TM1201PIN	50	29	20	14	15	14	11	M12	18	35
●	F17760.TM0801PIN	60	34	24	16	18	15	16	M08	18	54
●	F17760.TM1001PIN	60	34	24	16	18	15	16	M10	18	55
●	F17760.TM1201PIN	60	34	24	16	18	15	16	M12	18	55

F178



SOLID 6 LOBE HANDWHEEL WITH MALE THREADED STUD

Material:
Reinforced polyamide.
Oils and greases resistant.

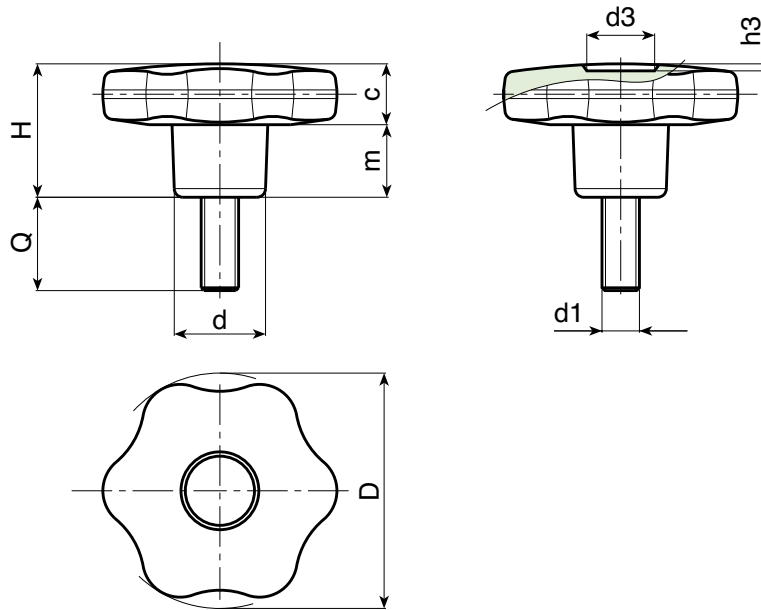
Surface:
Satin.

Colour:
Black (RAL 9011).

Main Insert:
Zinc plated steel threaded stud (tolerance 6g).

SPECIAL REQUESTS:

- It is possible to supply inserts in different lengths or by special design, on request and for quantities.
- It is possible to supply inserts in different materials, on request and for quantities.
- It is possible to supply colours as shown in the table on page F-43, on request and for quantities.



Art.	D	H	d	c	m	d3	h3	LM	d1 6g	Q	g
F17830.TM05X..01	30	22	15	11	11	9	1,5	80	M05	10-16-20-30-40	13-14-15-16-17
F17830.TM06X..01	30	22	15	11	11	9	1,5	80	M06	10-16-20 25-30-40	15-16-17 17,5-18-19
F17830.TM08X..01	30	22	15	11	11	9	1,5	80	M08	16-20-30-40	19-21-25-28
F17830.TM10X..01	30	22	15	11	11	9	1,5	80	M10	20-30-40	28-33-39
F17840.TM06X..01	40	24,5	17	12	12,5	12	1	130	M06	16-20-30-40	25-25-27-28
F17840.TM08X..01	40	24,5	17	12	12,5	12	1	130	M08	16-20-25-30 35-40-45-50	28-30-31-33 34-36-38-39
F17840.TM10X..01	40	24,5	17	12	12,5	12	1	130	M10	20-30-40-50	37-41-45-49
F17850.TM08X..01	50	29	20	14	15	14,5	1,5	130	M08	15-20-30-40	48-49-52-55
F17850.TM10X..01	50	29	20	14	15	14,5	1,5	130	M10	20-25-30-40-50	55-57-60-61-64
F17850.TM12X..01	50	29	20	14	15	14,5	1,5	130	M12	20-30-40-50	63-67-72-77
F17860.TM08X..01	60	34	24	16	18	18	1,5	130	M08	30-40	71-74
F17860.TM10X..01	60	34	24	16	18	18	1,5	130	M10	20-30-40-50	74-80-85-88
F17860.TM12X..01	60	34	24	16	18	18	1,5	130	M12	20-30-40-50	95-102-109-116
F17860.TM14X..01	60	34	24	16	18	18	1,5	130	M14	A.R.	-

Enter the stud length choice in the two .. of the article code. Lengths by request with 150 pieces minimum quantity.

LM = Maximum mouldable length.

A.R. = By request. Minimum order quantity 150.

F178 CIN



INOX

SOLID 6 LOBE HANDWHEEL WITH STAINLESS STEEL MALE THREADED STUD

Material:
Reinforced polyamide.
Oils and greases resistant.

Surface:
Satin.

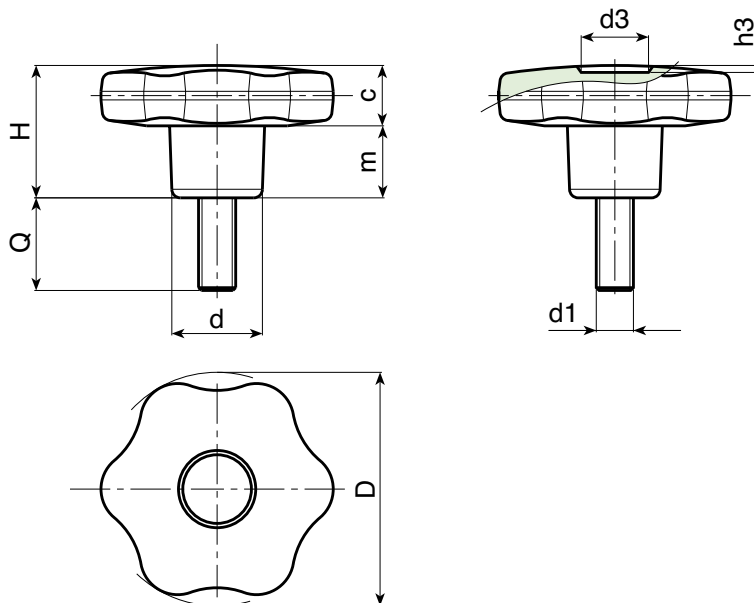
Colour:
Black (RAL 9011).

Main Insert:
Stainless steel threaded stud (AISI 304) (tolerance 6g).



SPECIAL REQUESTS:

- It is possible to supply inserts in different lengths or by special design, on request and for quantities.
- It is possible to supply colours as shown in the table on page F-43, on request and for quantities.



Art.	D	H	d	c	m	d3	h3	LM	d1 6g	Q	△ g
F17830.TM05X..01CIN	30	22	15	11	11	9	1,5	80	M05	16-20-40	14-15-17
F17830.TM06X..01CIN	30	22	15	11	11	9	1,5	80	M06	16-20-30-40	16-17-18-19
F17830.TM08X..01CIN	30	22	15	11	11	9	1,5	80	M08	20-30	21-25
F17830.TM10X2001CIN	30	22	15	11	11	9	1,5	80	M10	20	28
F17840.TM06X..01CIN	40	24,5	17	12	12,5	12	1	130	M06	20-30-40	25-27-28
F17840.TM08X..01CIN	40	24,5	17	12	12,5	12	1	130	M08	20-30-40	30-33-36
F17840.TM10X4001CIN	40	24,5	17	12	12,5	12	1	130	M10	40	45
F17850.TM08X4001CIN	50	29	20	14	15	14,5	1,5	130	M08	40	55
F17850.TM10X..01CIN	50	29	20	14	15	14,5	1,5	130	M10	20-30-40-50	55-60-65-70
F17850.TM12X..01CIN	50	29	20	14	15	14,5	1,5	130	M12	A.R.	-
F17860.TM08X4001CIN	60	34	24	16	18	18	1,5	130	M08	40	74
F17860.TM10X4001CIN	60	34	24	16	18	18	1,5	130	M10	40	74-80-85
F17860.TM12X..01CIN	60	34	24	16	18	18	1,5	130	M12	20-40	95-109
F17860.TM14X..01CIN	60	34	24	16	18	18	1,5	130	M14	A.R.	-

Enter the stud length choice in the two .. of the article code. Lengths by request with 150 pieces minimum quantity.

LM = Maximum mouldable length.

A.R. = By request. Minimum order quantity 150.

F175 CAT



SOLID 6 LOBE HANDWHEEL WITH FEMALE THREADED INSERT AND RETENTION CHAIN

Material:

Reinforced polyamide.
Oils and greases resistant.

Surface:

Satin.

Colour:

Black (RAL 9011).

Main Insert:

Brass blind threaded bush, (thread tolerance 6H).

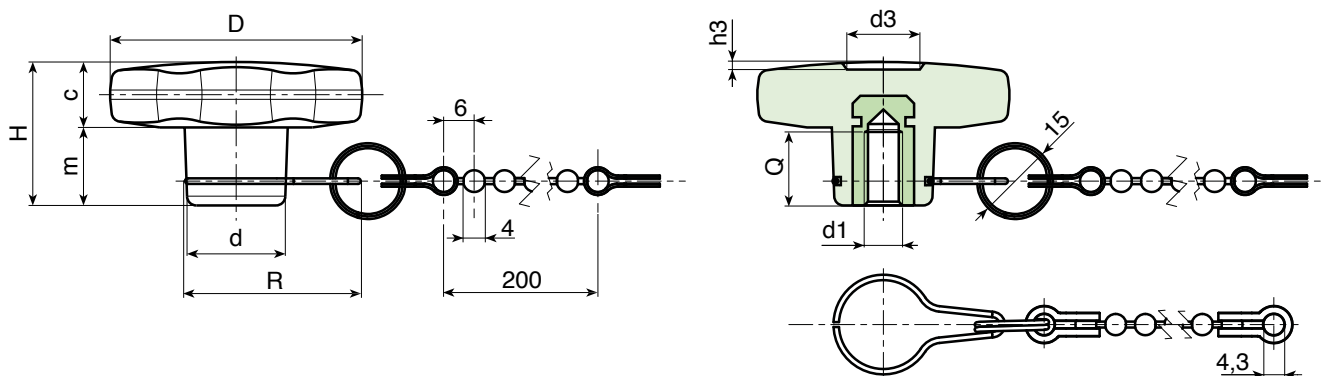
Chain:

Chain in black acetal (POM). Joints, retaining ring and hub hook in stainless steel harmonic steel (Aisi 302).



SPECIAL REQUESTS:

- It is possible to supply the inserts in different materials, on request and for quantities.
- It is possible to supply the chain in different lengths, on request and for quantities.
- It is possible to supply colours as shown in the table on page F-43, on request and for quantities.



Art.	D	H	d	R	c	m	d3	h3	d1 6H	Q	g
F17530.TM0401CAT	30	22	15	32	11	11	9	1,5	M04	7	14,5
F17530.TM0501CAT	30	22	15	32	11	11	9	1,5	M05	14	14,5
F17530.TM0601CAT	30	22	15	32	11	11	9	1,5	M06	10	15
F17540.TM0501CAT	40	24,5	17	33	12	12,5	12	1	M05	14	25
F17540.TM0601CAT	40	24,5	17	33	12	12,5	12	1	M06	16	25
F17540.TM0801CAT	40	24,5	17	33	12	12,5	12	1	M08	14	24,5
F17550.TM0601CAT	50	29	20	35	14	15	14,5	1,5	M06	16	39
F17550.TM0801CAT	50	29	20	35	14	15	14,5	1,5	M08	14	39
F17550.TM1001CAT	50	29	20	35	14	15	14,5	1,5	M10	14	40
F17560.TM0801CAT	60	34	24	38	16	18	18	1,5	M08	19	62
F17560.TM1001CAT	60	34	24	38	16	18	18	1,5	M10	21	62
F17560.TM1201CAT	60	34	24	38	16	18	18	1,5	M12	18	65

F177 CAT



SOLID 6 LOBE HANDWHEEL WITH FEMALE THROUGH THREADED INSERT AND RETENTION CHAIN

Material:
Reinforced polyamide.
Oils and greases resistant.

Surface:
Satin.

Colour:
Black (RAL 9011).

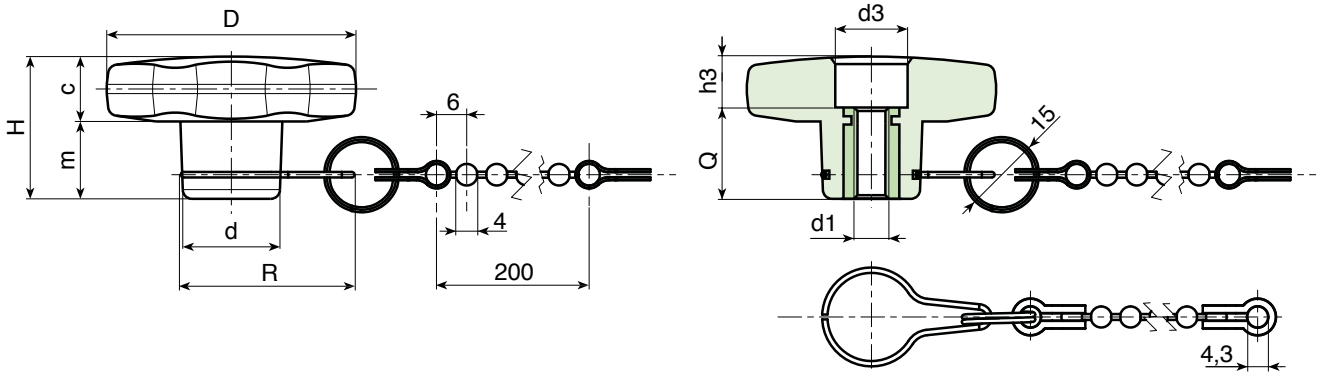
Main Insert:
Brass through threaded bore insert,
(thread tolerance 6H).

Chain:
Chain in black acetal (POM). Joints, retaining ring
and hub hook in stainless steel harmonic steel
(Aisi 302).



SPECIAL REQUESTS:

- It is possible to supply the inserts in different materials, on request and for quantities.
- It is possible to supply the chain in different lengths, on request and for quantities.
- It is possible to supply colours as shown in the table on page F-43, on request and for quantities.



Art.	D	H	d	R	c	m	d3	h3	d1 6H	Q	Δ g
F17730.TM0501CAT	30	22	15	32	11	11	11	4	M05	18	15
F17730.TM0601CAT	30	22	15	32	11	11	11	4	M06	18	16
F17740.TM0601CAT	40	24,5	17	33	12	12,5	12	6	M06	18	23
F17740.TM0801CAT	40	24,5	17	33	12	12,5	12	6	M08	18	24
F17750.TM0601CAT	50	29	20	35	14	15	14	11	M06	18	36
F17750.TM0801CAT	50	29	20	35	14	15	14	11	M08	18	37
F17750.TM1001CAT	50	29	20	35	14	15	14	11	M10	18	38
F17760.TM0801CAT	60	34	24	38	16	18	15	16	M08	18	57
F17760.TM1001CAT	60	34	24	38	16	18	15	16	M10	18	58
F17760.TM1201CAT	60	34	24	38	16	18	15	16	M12	18	58

F178 CAT



SOLID 6 LOBE HANDWHEEL WITH THREADED STUD AND RETENTION CHAIN

Material:

Reinforced polyamide. Oils and greases resistant.

Surface: Satin.

Colour: Black (RAL 9011).

Main Insert:

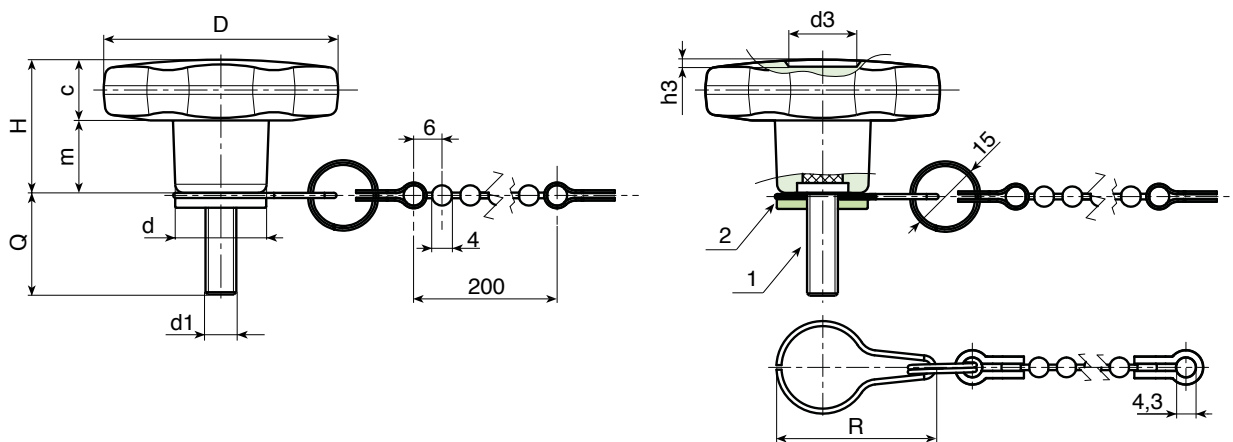
(1) Zinc plated steel threaded stud (tolerance 6g).
 (2) Galvanized steel turned fastening ring, secured with thread lock, and with groove for retaining hook.

Chain:

Chain in black acetal (POM). Joints, retaining ring and hub hook in stainless steel harmonic steel (Aisi 302).

SPECIAL REQUESTS:

- It is possible to supply inserts in different lengths or by special design, on request and for quantities.
- It is possible to supply the inserts in different materials, on request and for quantities.
- It is possible to supply the chain in different lengths, on request and for quantities.
- It is possible to supply colours as shown in the table on page F-43, on request and for quantities.



Art.	D	H	d	R	c	m	d3	h3	LM	d1 6g	Q	Δ g
F17830.TM05X..01CAT	30	22	15	32	11	11	9	1,5	80	M05	10-16-20-30-40	16-17-18-19-20
F17830.TM06X..01CAT	30	22	15	32	11	11	9	1,5	80	M06	10-16-20 25-30-40	18-19-20 21-21-22
F17830.TM08X..01CAT	30	22	15	32	11	11	9	1,5	80	M08	16-20-30-40	22-24-28-31
F17830.TM10X..01CAT	30	22	15	32	11	11	9	1,5	80	M10	20-30-40	31-36-42
F17840.TM06X..01CAT	40	24,5	17	33	12	12,5	12	1	130	M06	16-20-30-40	28-28-30-31
F17840.TM08X..01CAT	40	24,5	17	33	12	12,5	12	1	130	M08	16-20-25-30 35-40-45-50	31-33-34-35 37-39-41-42
F17840.TM10X..01CAT	40	24,5	17	33	12	12,5	12	1	130	M10	20-30-40-50	40-44-48-52
F17850.TM08X..01CAT	50	29	20	35	14	15	14,5	1,5	130	M08	15-20-30-40	51-52-55-58
F17850.TM10X..01CAT	50	29	20	35	14	15	14,5	1,5	130	M10	20-25-30-40-50	58-60-63-64-67
F17850.TM12X..01CAT	50	29	20	35	14	15	14,5	1,5	130	M12	20-30-40-50	66-70-75-80
F17860.TM08X..01CAT	60	34	24	38	16	18	18	1,5	130	M08	30-40	74-77
F17860.TM10X..01CAT	60	34	24	38	16	18	18	1,5	130	M10	20-30-40-50	77-83-88-91
F17860.TM12X..01CAT	60	34	24	38	16	18	18	1,5	130	M12	20-30-40-50	98-105-112-119

F275



SOLID 6 LOBE HANDWHEEL WITH STEEL/STAINLESS STEEL HUB AND THREADED HOLE

Material:
Reinforced polyamide.
Oils and greases resistant.

Surface:
Satin.

Colour:
Black (RAL 9011).

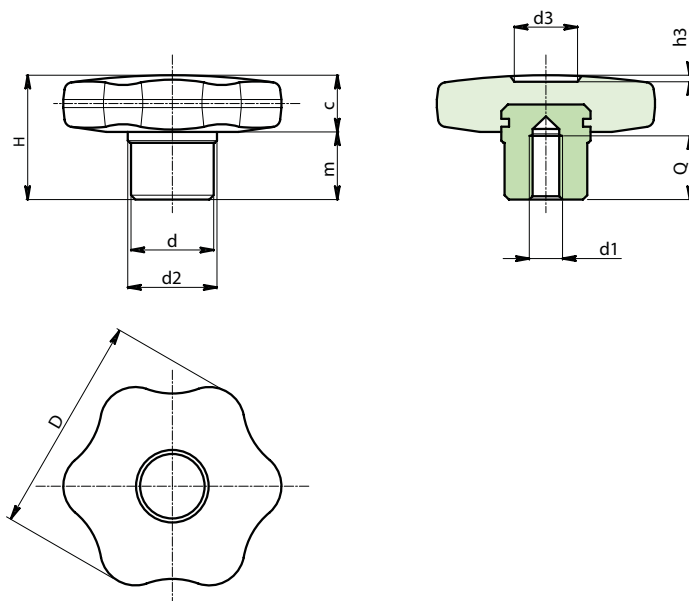
Inserts:
F275: Zinc plated steel insert with female blind threaded hole (thread tolerance 6H).

F275CIN: Stainless steel (AISI 303) insert with female blind threaded hole (thread tolerance 6H).



SPECIAL REQUESTS:

- It's possible to supply the inserts with d1 bore by customer design, on request and for quantities.
- It is possible to supply colours as shown in the table on page F-43, on request and for quantities.



Version F275: Zinc plated steel

Art.	D	d	d2	d3	H	h3	m	c	d1 6H	Q	g
F27530.TM0601	30	13	15	9	22	1,5	11	11	M06	12	25
F27540.TM0801	40	15	17	12	24	1	12	12	M08	14	39
F27550.TM1001	50	18	20	14,5	29	1,5	15	14	M10	16	66
F27560.TM1201	60	20	24	18	34	1,5	18	16	M12	20	105

Version F275 CIN: Stainless steel AISI 303

Art.	D	d	d2	d3	H	h3	m	c	d1 6H	Q	g
F27530.TM0601CIN	30	13	15	9	22	1,5	11	11	M06	12	25
F27540.TM0801CIN	40	15	17	12	24	1	12	12	M08	14	39
F27550.TM1001CIN	50	18	20	14,5	29	1,5	15	14	M10	16	66
F27560.TM1201CIN	60	20	24	18	34	1,5	18	16	M12	20	105

INOX

F276



SOLID 6 LOBE HANDWHEEL WITH STEEL/STAINLESS STEEL HUB AND SMOOTH HOLE

Material:
Reinforced polyamide.
Oils and greases resistant.

Surface:
Satin.

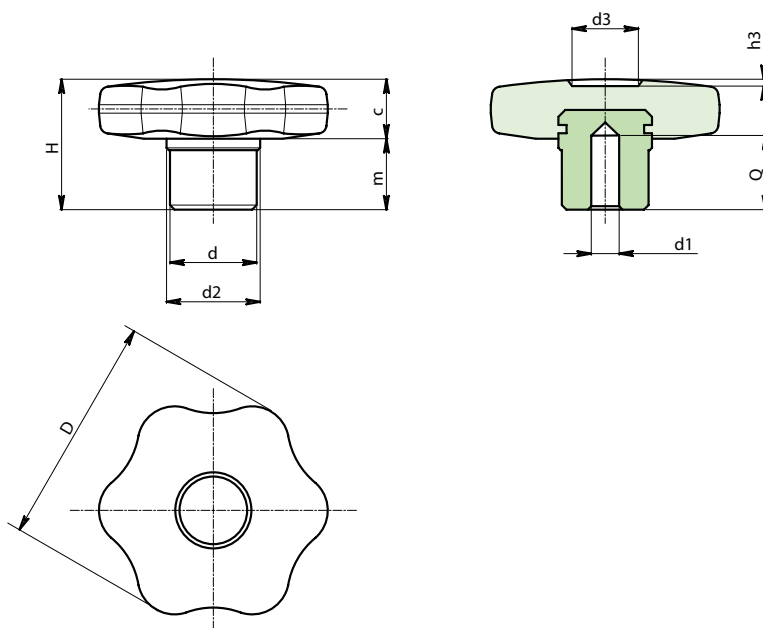
Colour:
Black (RAL 9011).

Inserts:
F276: Zinc plated steel insert with female blind smooth hole (tolerance H10).
F276CIN: Stainless steel (AISI 303) insert with female blind smooth hole (tolerance H9).



SPECIAL REQUESTS:

- It's possible to supply the inserts with d1 bore by customer design, on request and for quantities.
- It is possible to supply colours as shown in the table on page F-43, on request and for quantities.



Version F276: Zinc plated steel

Art.	D	d	d2	d3	H	h3	m	c	d1 H10	Q	Δ g
F27630.TD0601	30	13	15	9	22	1,5	11	11	06	12	26
F27640.TD0801	40	15	17	12	24	1	12	12	08	14	40
F27650.TD1001	50	18	20	14,5	29	1,5	15	14	10	16	67
F27660.TD1201	60	20	24	18	34	1,5	18	16	12	20	102

Version F276 CIN: Stainless steel AISI 303

Art.	D	d	d2	d3	H	h3	m	c	d1 H9	Q	Δ g
F27630.TD0601CIN	30	13	15	9	22	1,5	11	11	06	12	26
F27640.TD0801CIN	40	15	17	12	24	1	12	12	08	14	40
F27650.TD1001CIN	50	18	20	14,5	29	1,5	15	14	10	16	67
F27660.TD1201CIN	60	20	24	18	34	1,5	18	16	12	20	102

INOX

Presumable presence in the stock in %
90% **40%** **5%**

F277



SOLID 6 LOBE HANDWHEEL WITH STEEL/STAINLESS STEEL HUB AND RIGHT THROUGH THREADED HOLE

Material:
Reinforced polyamide.
Oils and greases resistant.

Surface:
Satin.

Colour:
Black (RAL 9011).

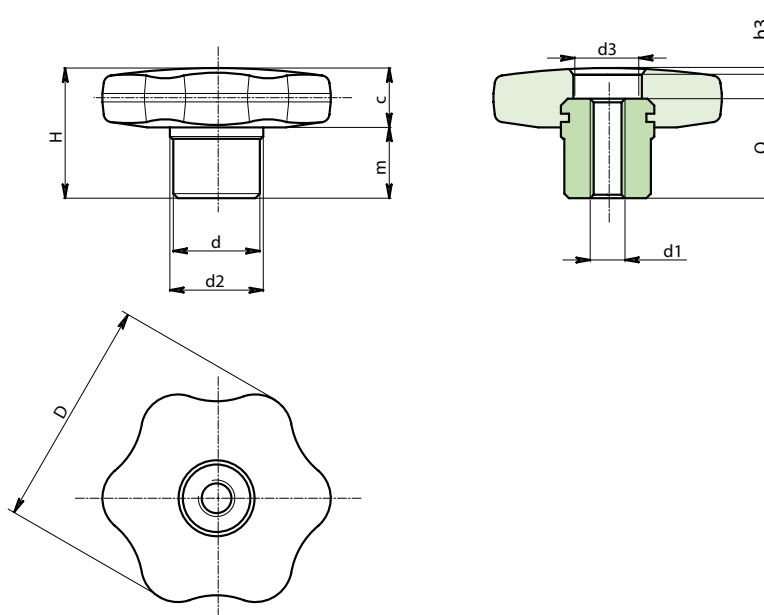
Inserts:
F277: Zinc plated steel insert with female right through threaded hole (tolerance 6H).

F277PIN: Stainless steel (AISI 303) insert with female right through threaded hole (tolerance 6H).



SPECIAL REQUESTS:

- It's possible to supply the inserts with d1 bore by customer design, on request and for quantities.
- It is possible to supply colours as shown in the table on page F-43, on request and for quantities.



Version F277: Zinc plated steel

Art.	D	d	d2	d3	H	h3	m	c	d1 6H	Q	g
F27730.TM0601	30	13	15	8	22	4	11	11	M06	18	24
F27740.TM0801	40	15	17	11	24	6	12	12	M08	18	34
F27750.TM1001	50	18	20	13	29	7	15	14	M10	22	59
F27760.TM1201	60	20	24	16	34	6	18	16	M12	28	98

Version F277 PIN: Stainless steel AISI 303

Art.	D	d	d2	d3	H	h3	m	c	d1 6H	Q	g
F27730.TM0601PIN	30	13	15	8	22	4	11	11	M06	18	24
F27740.TM0801PIN	40	15	17	11	24	6	12	12	M08	18	34
F27750.TM1001PIN	50	18	20	13	29	7	15	14	M10	22	59
F27760.TM1201PIN	60	20	24	16	34	6	18	16	M12	28	98

INOX

F278



SOLID 6 LOBE HANDWHEEL WITH STEEL/STAINLESS STEEL HUB AND THREADED STUD

Material:
Reinforced polyamide.
Oils and greases resistant.

Surface:
Satin.

Colour:
Black (RAL 9011).

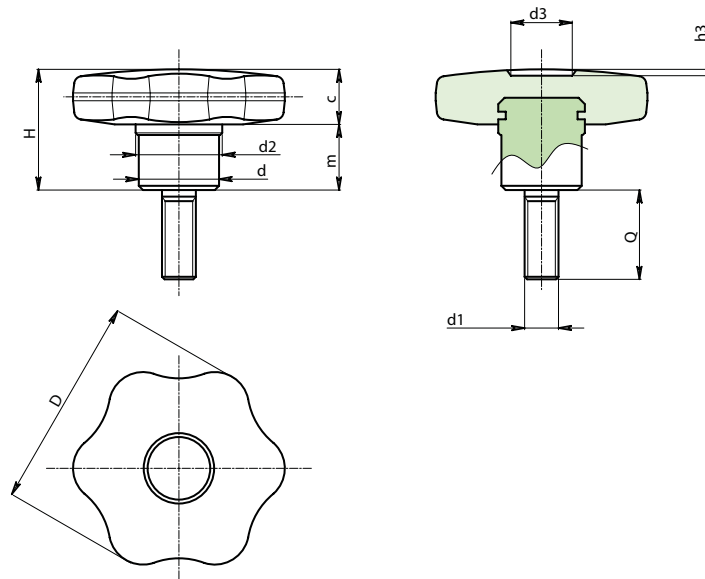
Inserts:
F278: Zinc plated steel insert with male threaded stud (tolerance 6g).

F278CIN: Stainless steel (AISI 303) insert with male threaded stud (tolerance 6g).



SPECIAL REQUESTS:

- It is possible to supply inserts in different lengths or by special design, on request and for quantities.
- It is possible to supply colours as shown in the table on page F-43, on request and for quantities.



Version F278: Zinc plated steel

Art.	D	d	d2	d3	H	h3	m	c	d1 6g	Q	LM	Δ g
F27830.TM06X..01	30	13	15	9	22	1,5	11	11	M06	A.R.	45	-
F27840.TM08X3001	40	15	17	12	24	1	12	12	M08	30	55	54
F27850.TM10X4001	50	18	20	14,5	29	1,5	15	14	M10	40	60	96
F27860.TM12X..01	60	20	24	18	34	1,5	18	16	M12	A.R.	60	-

LM = Maximum mouldable length. A.R. = By request. Minimum order quantity 150.

Version F278 CIN: Stainless steel AISI 303

Art.	D	d	d2	d3	H	h3	m	c	d1 6g	Q	LM	Δ g
F27830.TM06X..01CIN	30	13	15	9	22	1,5	11	11	M06	A.R.	35	-
F27840.TM08X3001CIN	40	15	17	12	24	1	12	12	M08	30	45	54
F27850.TM10X..01CIN	50	18	20	14,5	29	1,5	15	14	M10	A.R.	50	-
F27860.TM12X..01CIN	60	20	24	18	34	1,5	18	16	M12	A.R.	50	-

LM = Maximum mouldable length. A.R. = By request. Minimum order quantity 150.

INOX

Presumable presence in the stock in %
 90% ● 40% ● 5% ●

F186



SOLID CROSS HANDWHEEL WITH FEMALE THREADED INSERT

Material:
Reinforced polyamide.
Oils and greases resistant.

Surface:
Satin.

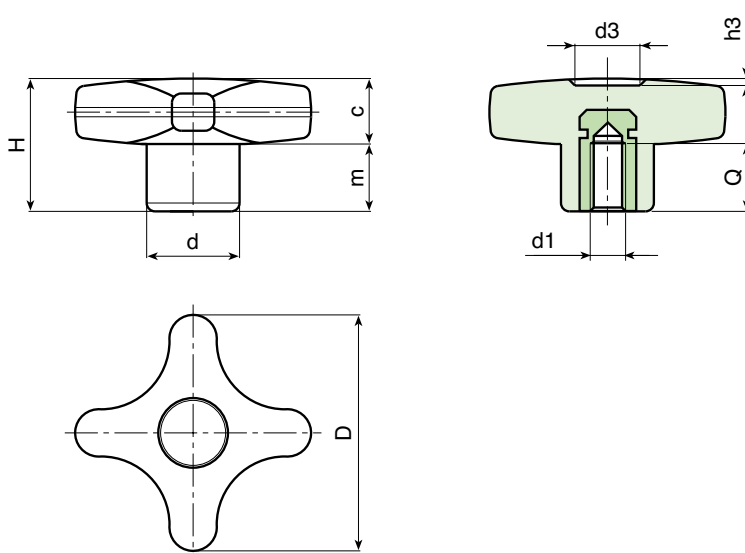
Colour:
Black (RAL 9011).

Main Insert:
Brass blind threaded bush (tolerance 6H).



SPECIAL REQUEST:

- It is possible to supply the inserts in different materials, on request and for quantities.
- It is possible to supply colours as shown in the table at pag. F-43, on request and for quantities.



Art.	D	H	d	c	m	d3	h3	d1 6H	Q	g
F18632.TM0401	32	23	15	11	12	11	1,5	M04	7	11
F18632.TM0501	32	23	15	11	12	11	1,5	M05	14	11,5
F18632.TM0601	32	23	15	11	12	11	1,5	M06	10	12
F18632.TM0801	32	23	15	11	12	11	1,5	M08	14	12,5
F18632.TM1001	32	23	15	11	12	11	1,5	M10	14	13
F18640.TM0501	40	24,5	16	12	12,5	13	1,5	M05	14	14
F18640.TM0601	40	24,5	16	12	12,5	13	1,5	M06	16	15
F18640.TM0801	40	24,5	16	12	12,5	13	1,5	M08	14	16
F18640.TM1001	40	24,5	16	12	12,5	13	1,5	M10	14	17
F18650.TM0601	50	29	20	14	15	14	2	M06	16	25
F18650.TM0801	50	29	20	14	15	14	2	M08	14	26
F18650.TM1001	50	29	20	14	15	14	2	M10	14	27
F18650.TM1201	50	29	20	14	15	14	2	M12	18	29
F18660.TM0801	60	34	24	15,5	18,5	18	2	M08	19	40
F18660.TM1001	60	34	24	15,5	18,5	18	2	M10	21	43
F18660.TM1201	60	34	24	15,5	18,5	18	2	M12	18	44
F18660.TM1401	60	34	24	15,5	18,5	18	2	M14	19	47

F186 CIN



INOX

SOLID CROSS HANDWHEEL WITH FEMALE THREADED STAINLESS STEEL INSERT

Material:

Reinforced polyamide.
Oils and greases resistant.

Surface:

Satin.

Colour:

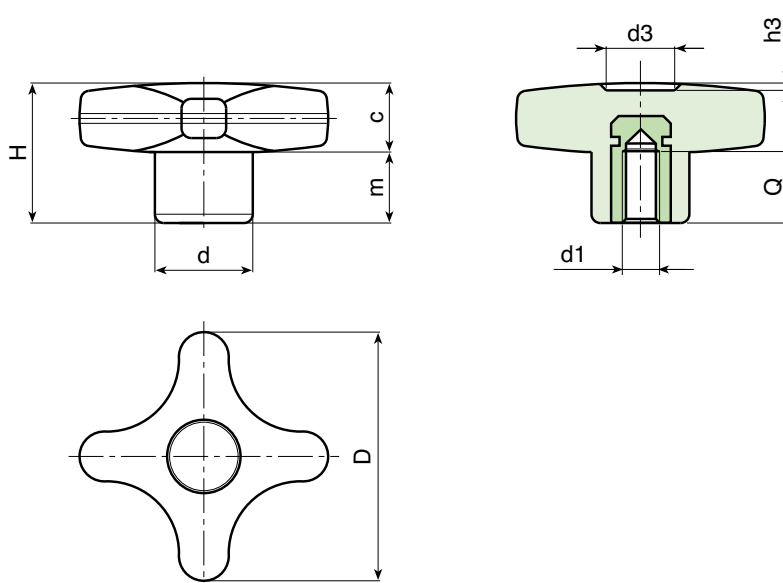
Black (RAL 9011).

Main Insert:

Stainless steel blind threaded bush (AISI 303)
(tolerance 6H).

SPECIAL REQUEST:

- It is possible to supply colours as shown in the table at pag. F-43, on request and for quantities.



	Art.	D	H	d	c	m	d3	h3	d1 6H	Q	△ g
●	F18632.TM0501CIN	32	23	15	11	12	11	1,5	M05	14	11,5
●	F18632.TM0601CIN	32	23	15	11	12	11	1,5	M06	10	12
●	F18632.TM0801CIN	32	23	15	11	12	11	1,5	M08	14	12,5
●	F18640.TM0601CIN	40	24,5	16	12	12,5	13	1,5	M06	16	15
●	F18640.TM0801CIN	40	24,5	16	12	12,5	13	1,5	M08	14	16
●	F18640.TM1001CIN	40	24,5	16	12	12,5	13	1,5	M10	14	17
●	F18650.TM0801CIN	50	29	20	14	15	14	2	M08	14	26
●	F18650.TM1001CIN	50	29	20	14	15	14	2	M10	14	27
●	F18650.TM1201CIN	50	29	20	14	15	14	2	M12	18	29
●	F18660.TM0801CIN	60	34	24	15,5	18,5	18	2	M08	19	40
●	F18660.TM1001CIN	60	34	24	15,5	18,5	18	2	M10	21	43
●	F18660.TM1201CIN	60	34	24	15,5	18,5	18	2	M12	18	44

F187



SOLID CROSS HANDWHEEL WITH SMOOTH BORED INSERT

Material:
Reinforced polyamide.
Oils and greases resistant.

Surface:
Satin.

Colour:
Black (RAL 9011).

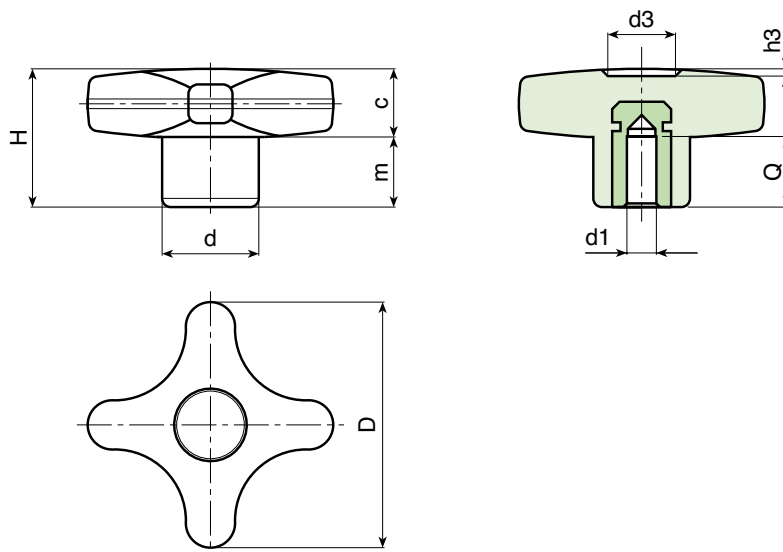
Main Insert:
Brass insert with smooth blind hole (tolerance H7).

(*) Zinc plated steel insert with smooth blind hole (tolerance H10).

ATTENTION: bore cannot be enlarged.

SPECIAL REQUEST:

- It is possible to supply the inserts in different materials, on request and for quantities.
- It is possible to supply colours as shown in the table at pag. F-43, on request and for quantities.



	Art.	D	H	d	c	m	d3	h3	d1 H7	Q	Δ g
●	F18732.TD0601	32	23	15	11	12	11	1,5	06	15	13
●	F18732.TD0801	32	23	15	11	12	11	1,5	08	15	14
●	F18740.TD0601	40	24,5	16	12	12,5	13	1,5	06	15	18
●	F18740.TD0801	40	24,5	16	12	12,5	13	1,5	08	15	21
●	F18740.TD1001	40	24,5	16	12	12,5	13	1,5	10	17	20
●	F18750.TD0601	50	29	20	14	15	14	2	06	15	29
●	F18750.TD0801	50	29	20	14	15	14	2	08	15	31
●	F18750.TD1001	50	29	20	14	15	14	2	10	17	32
●	F18760.TD0801	60	34	24	15,5	18,5	18	2	08	18	70
●	F18760.TD1001	60	34	24	15,5	18,5	18	2	10	25	65
●	F18760.TD1201	60	34	24	15,5	18,5	18	2	12	22	60

F188



SOLID CROSS HANDWHEEL WITH FEMALE RIGHT THROUGH THREADED INSERT

Material:
Reinforced polyamide.
Oils and greases resistant.

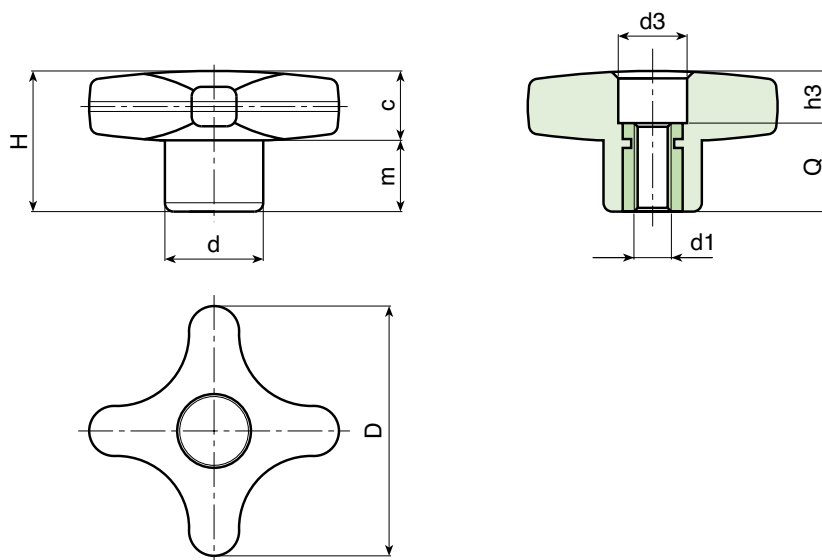
Surface:
Satin.

Colour:
Black (RAL 9011).

Main Insert:
Brass right through threaded bush (tolerance 6H).

SPECIAL REQUEST:

- It is possible to supply the inserts in different materials, on request and for quantities.
- It is possible to supply colours as shown in the table at pag. F-43, on request and for quantities.



	Art.	D	H	d	c	m	d3	h3	d1 6H	Q	g
●	F18832.TM0401	32	23	15	11	11	10	5	M04	18	9
●	F18832.TM0501	32	23	15	11	11	10	5	M05	18	10
●	F18832.TM0601	32	23	15	11	11	10	5	M06	18	10,5
●	F18832.TM0801	32	23	15	11	11	10	5	M08	18	11
●	F18840.TM0601	40	24,5	16	12	12,5	12	6,5	M06	18	13
●	F18840.TM0801	40	24,5	16	12	12,5	12	6,5	M08	18	15
●	F18840.TM1001	40	24,5	16	12	12,5	12	6,5	M10	18	16
●	F18850.TM0601	50	29	20	14	15	14	11	M06	18	23
●	F18850.TM0801	50	29	20	14	15	14	11	M08	18	24
●	F18850.TM1001	50	29	20	14	15	14	11	M10	18	25
●	F18850.TM1201	50	29	20	14	15	14	11	M12	18	26
●	F18860.TM0801	60	34	24	15,5	18,5	16	16	M08	18	34
●	F18860.TM1001	60	34	24	15,5	18,5	16	16	M10	18	38
●	F18860.TM1201	60	34	24	15,5	18,5	16	16	M12	18	40
●	F18860.TM1401	60	34	24	15,5	18,5	16	16	M14	18	45

F188 PIN



INOX

SOLID CROSS HANDWHEEL WITH FEMALE RIGHT THROUGH THREADED STAINLESS STEEL INSERT

Material:

Reinforced polyamide.
Oils and greases resistant.

Surface:

Satin.

Colour:

Black (RAL 9011).

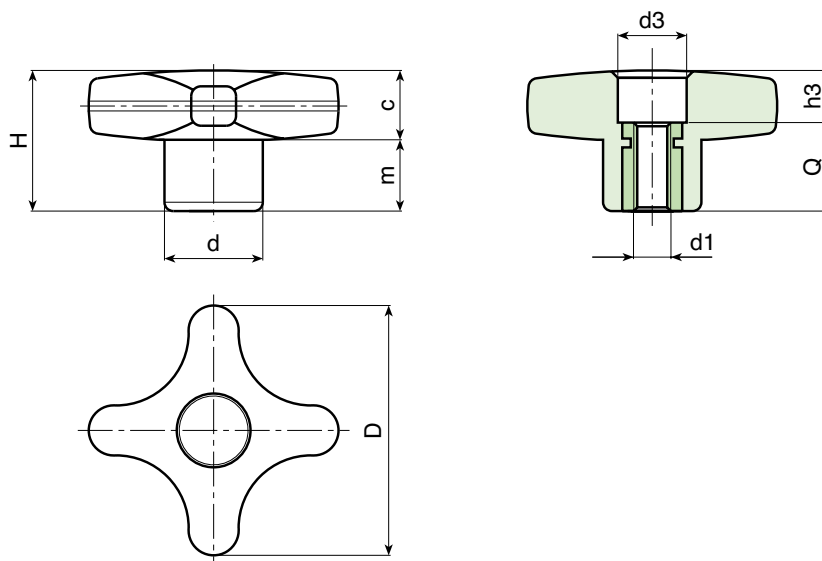
Main Insert:

Stainless steel right through threaded bush (AISI 303) (tolerance 6H).



SPECIAL REQUEST:

- It is possible to supply colours as shown in the table at pag. F-43, on request and for quantities.



Art.	D	H	d	c	m	d3	h3	d1 6H	Q	g
F18832.TM0501PIN	32	23	15	11	11	10	5	M05	18	10
F18832.TM0601PIN	32	23	15	11	11	10	5	M06	18	10,5
F18832.TM0801PIN	32	23	15	11	11	10	5	M08	18	11
F18840.TM0601PIN	40	24,5	16	12	12,5	12	6,5	M06	18	13
F18840.TM0801PIN	40	24,5	16	12	12,5	12	6,5	M08	18	15
F18840.TM1001PIN	40	24,5	16	12	12,5	12	6,5	M10	18	16
F18850.TM0801PIN	50	29	20	14	15	14	11	M08	18	24
F18850.TM1001PIN	50	29	20	14	15	14	11	M10	18	25
F18850.TM1201PIN	50	29	20	14	15	14	11	M12	18	26
F18860.TM0801PIN	60	34	24	15,5	18,5	16	16	M08	18	34
F18860.TM1001PIN	60	34	24	15,5	18,5	16	16	M10	18	38
F18860.TM1201PIN	60	34	24	15,5	18,5	16	16	M12	18	40

F189



SOLID CROSS HANDWHEEL WITH THREADED STUD

Material:
Reinforced polyamide.
Oils and greases resistant.

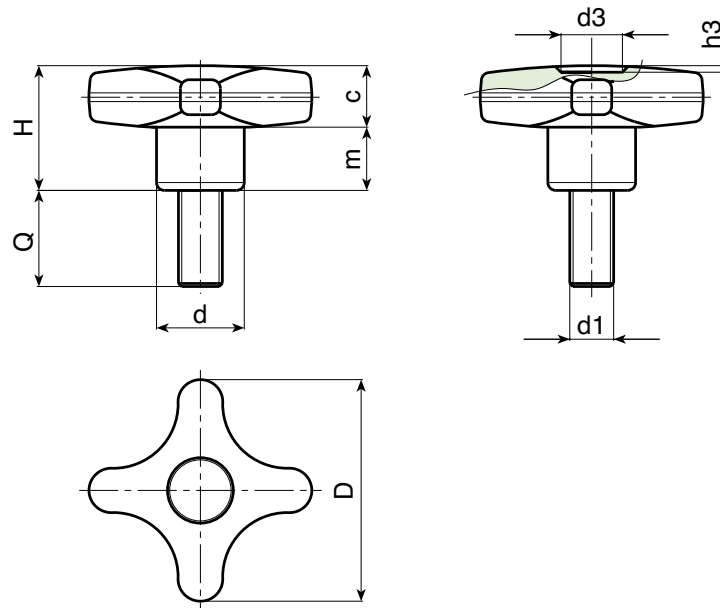
Surface:
Satin.

Colour:
Black (RAL 9011).

Main Insert:
Zinc plated steel threaded stud (tolerance 6g).

SPECIAL REQUESTS:

- It is possible to supply inserts in different lengths or by special design, on request and for quantities.
- It is possible to supply inserts in different materials, on request and for quantities.
- It is possible to supply colours as shown in the table on page F-43, on request and for quantities.



Art.	D	H	d	c	m	d3	h3	LM	d1 6g	Q	Δ g
F18932.TM05X..01	32	23	15	11	11	9	1,5	80	M05	16-20-30	14-15-16
F18932.TM06X..01	32	23	15	11	11	9	1,5	80	M06	16-20-30	15-16-17
F18932.TM08X..01	32	23	15	11	11	9	1,5	80	M08	16-20-30-40	19-21-23-25
F18932.TM10X..01	32	23	15	11	11	9	1,5	80	M10	20-30-40	24-27-30
F18940.TM06X..01	40	24,5	17	12	12,5	12	1	80	M06	15-20-30-40-50	20-20-21-22-25
F18940.TM08X..01	40	24,5	17	12	12,5	12	1	80	M08	16-20-30-40-50	22-24-29-33-37
F18940.TM10X..01	40	24,5	17	12	12,5	12	1	80	M10	15-20-30-50	28,5-30-35-47
F18950.TM08X..01	50	29	20	14	15	14,5	1,5	80	M08	15-20-30-40	36-38-42-46
F18950.TM10X..01	50	29	20	14	15	14,5	1,5	80	M10	20-30-40-50	49-55-61-65
F18950.TM12X..01	50	29	20	14	15	14,5	1,5	80	M12	30-50	57-70
F18960.TM08X..01	60	34	24	15,5	18,5	18	1,5	80	M08	15-20-30-40	45,5-47-50-53
F18960.TM10X..01	60	34	24	15,5	18,5	18	1,5	80	M10	20-30-40-50	64-68-72
F18960.TM12X..01	60	34	24	15,5	18,5	18	1,5	80	M12	20-30-40-50	78-85-91-99
F18960.TM14X..01	60	34	24	15,5	18,5	18	1,5	80	M14	30-40-50	82-91-103

Enter the stud length choice in the two .. of the article code. Lengths by request with 150 pieces minimum quantity.

LM = Maximum mouldable length.

Presumable presence in the stock in %
 90% ● 40% ● 5% ●

F189 CIN



INOX

SOLID CROSS HANDWHEEL WITH THREADED STAINLESS STEEL STUD

Material:
Reinforced polyamide.
Oils and greases resistant.

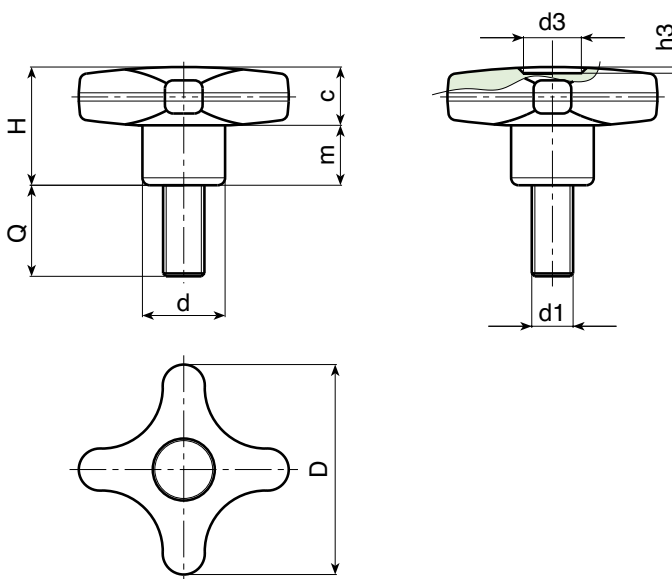
Surface:
Satin.

Colour:
Black (RAL 9011).

Main Insert:
Brass blind threaded bush, (thread tolerance 6H).

SPECIAL REQUESTS:

- It is possible to supply the chian in different lengths or by special design, on request and for quantities.
- It is possible to supply colours as shown in the table on page F-43, on request and for quantities.



Art.	D	H	d	c	m	d3	h3	LM	d1 6g	Q	Δ g
F18932.TM05X..01CIN	32	23	15	11	11	9	1,5	80	M05	20-40	15-17
F18932.TM06X..01CIN	32	23	15	11	11	9	1,5	80	M06	16-20-30	15-16-17
F18932.TM08X..01CIN	32	23	15	11	11	9	1,5	80	M08	16-20-30	19-21-23
F18932.TM10X2001CIN	32	23	15	11	11	9	1,5	80	M10	20	24
F18940.TM06X..01CIN	40	24,5	17	12	12,5	12	1	80	M06	15-20-40	19,5-20-22
F18940.TM08X..01CIN	40	24,5	17	12	12,5	12	1	80	M08	16-20-30-40	22-24-29-33
F18940.TM10X..01CIN	40	24,5	17	12	12,5	12	1	80	M10	A.R.	-
F18950.TM08X3501CIN	50	29	20	14	15	14,5	1,5	80	M08	35	44
F18950.TM10X..01CIN	50	29	20	14	15	14,5	1,5	80	M10	20-30-40	49-55-61
F18950.TM12X..01CIN	50	29	20	14	15	14,5	1,5	80	M12	A.R.	-
F18960.TM08X..01CIN	60	34	24	15,5	18,5	18	1,5	80	M08	A.R.	-
F18960.TM10X..01CIN	60	34	24	15,5	18,5	18	1,5	80	M10	50	72
F18960.TM12X..01CIN	60	34	24	15,5	18,5	18	1,5	80	M12	40-60	91-103
F18960.TM14X..01CIN	60	34	24	15,5	18,5	18	1,5	80	M14	A.R.	-

F186 CAT



SOLID CROSS HANDWHEEL WITH RETENTION CHAIN AND FEMALE THREADED INSERT

Material:
Reinforced polyamide.
Oils and greases resistant.

Surface:
Satin.

Colour:
Black (RAL 9011).

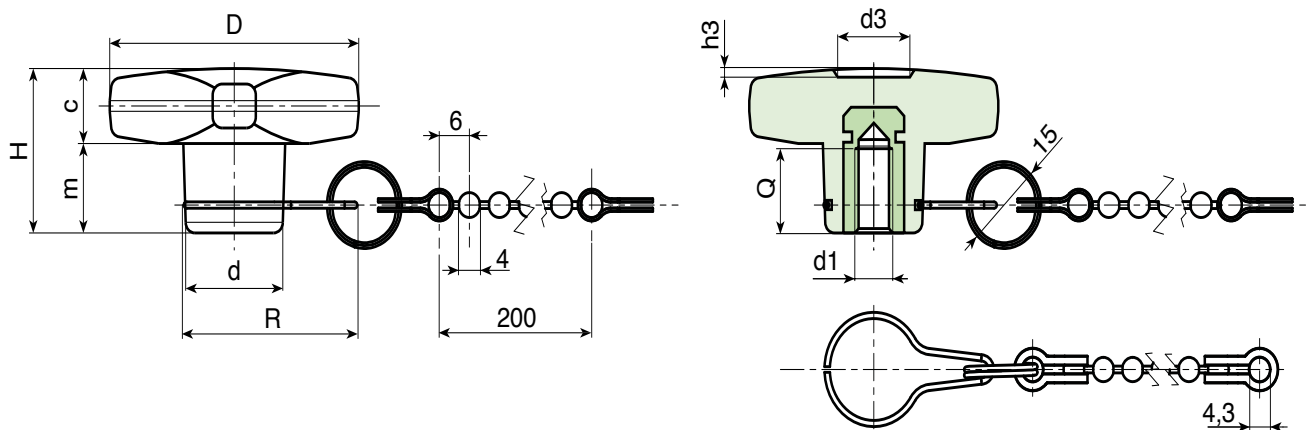
Main Insert:
Brass blind threaded bush, (thread tolerance 6H).

Chain:
Chain in black acetal (POM). Joints, retaining ring and hub hook in stainless steel harmonic steel (Aisi 302).



SPECIAL REQUESTS:

- It is possible to supply the inserts in different materials, on request and for quantities.
- It is possible to supply the chain in different lengths, on request and for quantities.
- It is possible to supply colours as shown in the table on page F-43, on request and for quantities.



Art.	D	H	d	R	c	m	d3	h3	d1 6H	Q	Δ g
F18632.TM0401CAT	32	23	15	32	11	12	11	1,5	M04	7	14
F18632.TM0501CAT	32	23	15	32	11	12	11	1,5	M05	14	15,5
F18632.TM0601CAT	32	23	15	32	11	12	11	1,5	M06	10	15
F18640.TM0501CAT	40	24,5	16	33	12	12,5	13	1,5	M05	14	17
F18640.TM0601CAT	40	24,5	16	33	12	12,5	13	1,5	M06	16	18
F18640.TM0801CAT	40	24,5	16	33	12	12,5	13	1,5	M08	14	19
F18650.TM0601CAT	50	29	20	35	14	15	14	2	M06	16	28
F18650.TM0801CAT	50	29	20	35	14	15	14	2	M08	14	29
F18650.TM1001CAT	50	29	20	35	14	15	14	2	M10	14	30
F18660.TM0801CAT	60	34	24	38	15,5	18,5	18	2	M08	19	43
F18660.TM1001CAT	60	34	24	38	15,5	18,5	18	2	M10	21	46
F18660.TM1201CAT	60	34	24	38	15,5	18,5	18	2	M12	18	47

F188 CAT



SOLID CROSS HANDWHEEL WITH RETENTION CHAIN AND FEMALE RIGHT THROUGH THREADED INSERT

Material:
Reinforced polyamide.
Oils and greases resistant.

Surface:
Satin.

Colour:
Black (RAL 9011).

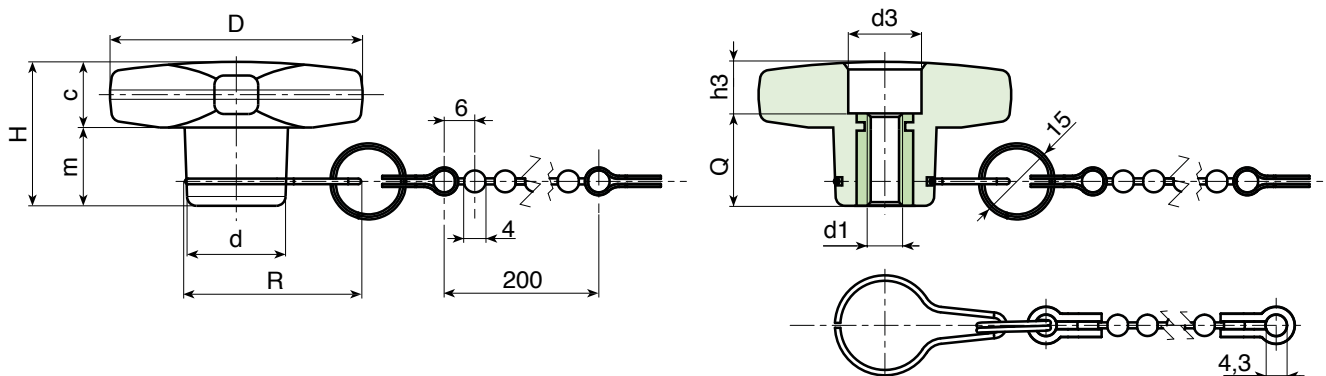
Main Insert:
Brass through threaded bore insert,
(thread tolerance 6H).

Chain:
Chain in black acetal (POM). Joints, retaining ring
and hub hook in stainless steel harmonic steel (Aisi
302).



SPECIAL REQUESTS:

- It is possible to supply the inserts in different materials, on request and for quantities.
- It is possible to supply the chain in different lengths, on request and for quantities.
- It is possible to supply colours as shown in the table on page F-43, on request and for quantities.



Art.	D	H	d	R	c	m	d3	h3	d1 6H	Q	Δ g
F18832.TM0401CAT	32	23	15	32	11	11	10	5	M04	18	12
F18832.TM0501CAT	32	23	15	32	11	11	10	5	M05	18	13
F18832.TM0601CAT	32	23	15	32	11	11	10	5	M06	18	13,5
F18840.TM0601CAT	40	24,5	16	33	12	12,5	12	6,5	M06	18	16
F18840.TM0801CAT	40	24,5	16	33	12	12,5	12	6,5	M08	18	18
F18850.TM0601CAT	50	29	20	35	14	15	14	11	M06	18	26
F18850.TM0801CAT	50	29	20	35	14	15	14	11	M08	18	27
F18850.TM1001CAT	50	29	20	35	14	15	14	11	M10	18	28
F18860.TM0801CAT	60	34	24	38	15,5	18,5	16	16	M08	18	37
F18860.TM1001CAT	60	34	24	38	15,5	18,5	16	16	M10	18	41
F18860.TM1201CAT	60	34	24	38	15,5	18,5	16	16	M12	18	43

F189 CAT



SOLID CROSS HANDWHEEL WITH RETENTION CHAIN AND MALE THREADED STUD

Material:

Reinforced polyamide. Oils and greases resistant.

Surface: Satin.

Colour: Black (RAL 9011).

Main Insert:

(1) Zinc plated steel threaded stud (tolerance 6g).
 (2) Galvanized steel turned fastening ring, secured with thread lock, and with groove for retaining hook.

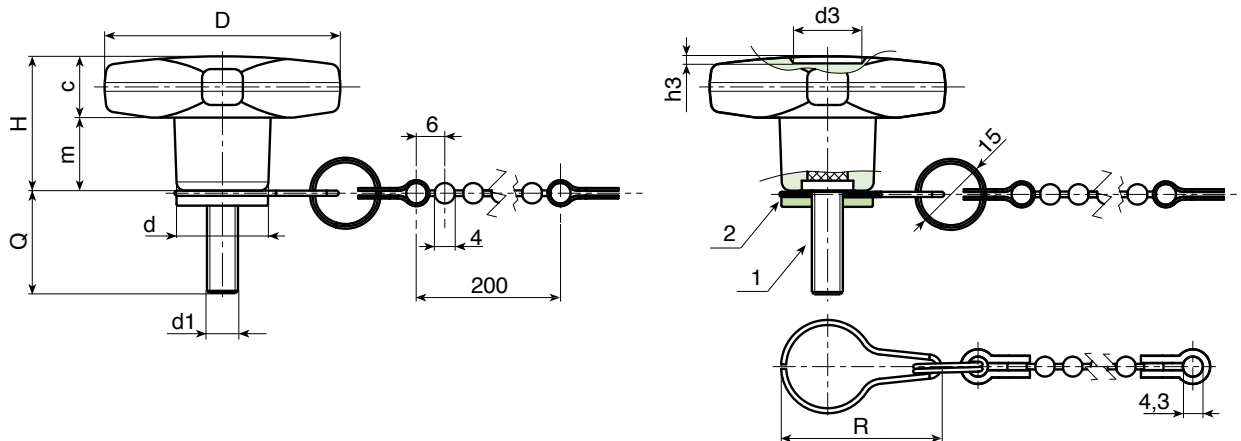
Chain:

Chain in black acetal (POM). Joints, retaining ring and hub hook in stainless steel harmonic steel (Aisi 302).



SPECIAL REQUESTS:

- It is possible to supply inserts in different lengths or by special design, on request and for quantities.
- It is possible to supply the inserts in different materials, on request and for quantities.
- It is possible to supply the chain in different lengths, on request and for quantities.
- It is possible to supply colours as shown in the table on page F-43, on request and for quantities.



Art.	D	H	d	R	c	m	d3	h3	LM	d1 6g	Q	ΔΔ g
F18932.TM05X..01CAT	32	23	15	32	11	11	9	1,5	80	M05	16-20-30	17-18-19
F18932.TM06X..01CAT	32	23	15	32	11	11	9	1,5	80	M06	16-20-30	18-19-20
F18932.TM08X..01CAT	32	23	15	32	11	11	9	1,5	80	M08	16-20-30-40	22-24-26-28
F18932.TM10X..01CAT	32	23	15	32	11	11	9	1,5	80	M10	20-30-40	27-30-33
F18940.TM06X..01CAT	40	24,5	17	33	12	12,5	12	1	80	M06	15-20-30-40-50	23-23-24-25-28
F18940.TM08X..01CAT	40	24,5	17	33	12	12,5	12	1	80	M08	16-20-30-40-50	25-27-32-36-40
F18940.TM10X..01CAT	40	24,5	17	33	12	12,5	12	1	80	M10	15-20-30-50	31-33-38-50
F18950.TM08X..01CAT	50	29	20	35	14	15	14,5	1,5	80	M08	15-20-30-40	39-41-45-49
F18950.TM10X..01CAT	50	29	20	35	14	15	14,5	1,5	80	M10	20-30-40-50	52-58-64-68
F18950.TM12X..01CAT	50	29	20	35	14	15	14,5	1,5	80	M12	30-50	60-73
F18960.TM08X..01CAT	60	34	24	38	15,5	18,5	18	1,5	80	M08	15-20-30-40	48-50-53-56
F18960.TM10X..01CAT	60	34	24	38	15,5	18,5	18	1,5	80	M10	20-30-40-50	67-71-75
F18960.TM12X..01CAT	60	34	24	38	15,5	18,5	18	1,5	80	M12	20-30-40-50	81-88-94-102

F271



SOLID CROSS HANDWHEEL WITH STEEL HUB AND QUICK RELEASE THREADED BORE

Material:
Reinforced polyamide.
Oils and greases resistant.

Surface:
Satin.

Colour:
Black (RAL 9011).

Inserts:
F271: Zinc plated steel insert with female right through threaded hole with groove for quick release.

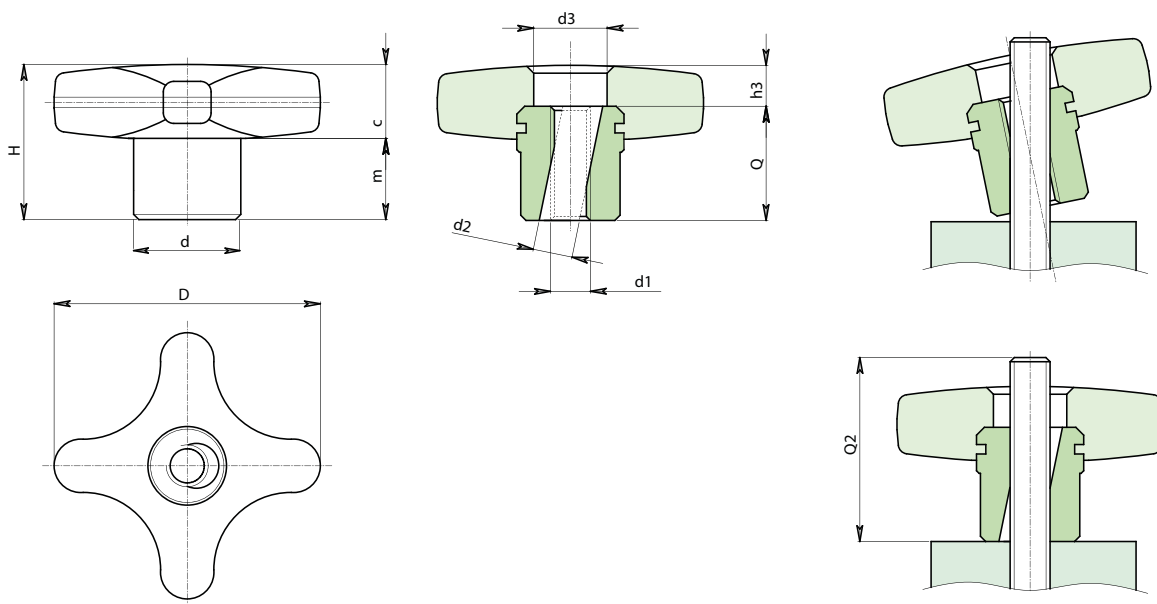
F271 PIN:Stainless steel (AISI 303) insert with female right through threaded hole with groove for quick release.



SPECIAL REQUESTS:

- None.

ATTENTION:
TO GUARANTEE CORRECT OPERATION OF THE QUICK RELEASE HANDWHEEL, THE THREADED STUD MUST HAVE A MINIMUM LENGTH OF Q2.



Version F271: Zinc plated steel

Art.	D	d	d2	d3	H	h3	m	c	d1	Q	Q2	g
F27140.TM0801P	40	16	8,5	14	26	4	14	12	M08	22	35	31
F27150.TM1001P	50	20	10,5	18	34	4	20	14	M10	30	43	63

Version F271 PIN: Stainless steel AISI 303

Art.	D	d	d2	d3	H	h3	m	c	d1	Q	Q2	g
F27140.TM0801PIN	40	16	8,5	14	26	4	14	12	M08	22	35	31
F27150.TM1001PIN	50	20	10,5	18	34	4	20	14	M10	30	43	63

INOX

F269



HIGH CLAMPING SOLID CROSS HANDWHEEL WITH THREADED INSERT

Material:
Reinforced polyamide.
Oils and greases resistant.

Surface:
Satin.

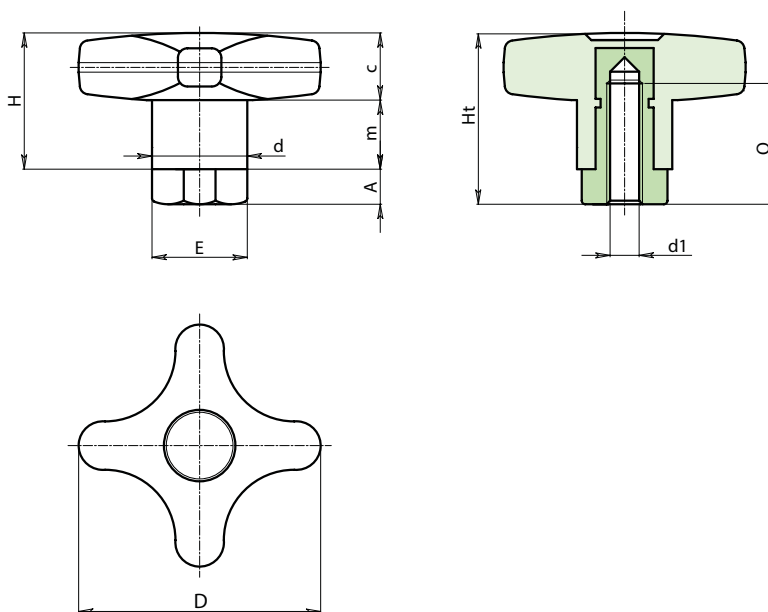
Colour:
Black (RAL 9011).

Insert:
Nickel plated brass hexagonal insert with female blind threaded hole (thread tolerance 6H).

SPECIAL REQUESTS:

- It is possible to supply colours as shown in the table on page F-43, on request and for quantities.

ATTENTION:
FOR NORMAL TIGHTNESS SIMPLY ROTATE THE KNOB. FOR MORE TIGHTNESS, INSERT AN ALLEN WRENCH IN THE HEXAGON.



	Art.	D	d	H	Ht	A	E	m	c	d1 6H	Q	Δ g
●	F26950.TM0601	50	18	29	39	10	⬡ 17	15	14	M06	25	72
●	F26950.TM0801	50	18	29	39	10	⬡ 17	15	14	M08	25	67
●	F26950.TM1001	50	18	29	39	10	⬡ 17	15	14	M10	25	60

F270



HIGH CLAMPING SOLID CROSS HANDWHEEL WITH THREADED STUD

Material:
Reinforced polyamide.
Oils and greases resistant.

Surface:
Satin.

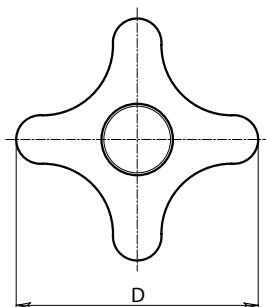
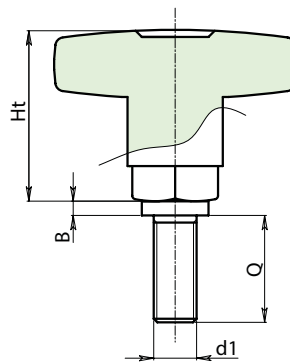
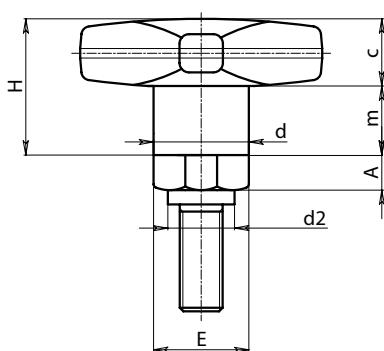
Colour:
Black (RAL 9011).

Insert:
Nickel plated brass hexagonal insert with male threaded stud (thread tolerance 6g).

SPECIAL REQUESTS:

- It is possible to supply inserts in different lengths or by special design, on request and for quantities.
- It is possible to supply colours as shown in the table on page F-43, on request and for quantities.

ATTENTION:
FOR NORMAL TIGHTNESS SIMPLY ROTATE THE KNOB. FOR MORE TIGHTNESS, INSERT AN ALLEN WRENCH IN THE HEXAGON.



Art.	D	d	d2	H	Ht	A	B	E	m	c	d1 6g	Q	⚖ g
● F27050.TM10X2501	50	18	15	24	34	10	4	⬡ 17	15	14	M10	25	97

F286



SOLID CROSS HANDWHEEL WITH STEEL/STAINLESS STEEL HUB AND THREADED HOLE

Material:
Reinforced polyamide.
Oils and greases resistant.

Surface:
Satin.

Colour:
Black (RAL 9011).

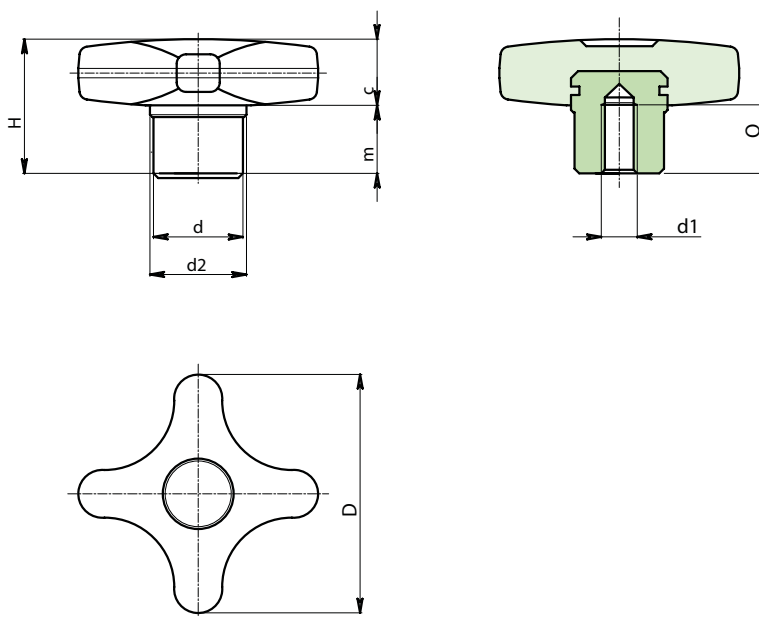
Inserts:
F286: Zinc plated steel insert with female blind threaded hole (thread tolerance 6H).

F286CIN: Stainless steel (AISI 303) insert with female blind threaded hole (thread tolerance 6H).



SPECIAL REQUESTS:

- It's possible to supply the inserts with d1 bore by customer design, on request and for quantities.
- It is possible to supply colours as shown in the table on page F-43, on request and for quantities.



Version F286: Zinc plated steel

Art.	D	d	d2	H	m	c	d1 6H	Q	△ g
F28632.TM0601	32	13	15	22	11	11	M06	12	23
F28640.TM0801	40	14	16	24	12	12	M08	14	32
F28650.TM1001	50	18	20	29	15	14	M10	16	54
F28660.TM1201	60	20	24	34	18	16	M12	20	90

Version F286 CIN: Stainless steel AISI 303

Art.	D	d	d2	H	m	c	d1 6H	Q	△ g
F28632.TM0601CIN	32	13	15	22	11	11	M06	12	23
F28640.TM0801CIN	40	14	16	24	12	12	M08	14	32
F28650.TM1001CIN	50	18	20	29	15	14	M10	16	54
F28660.TM1201CIN	60	20	24	34	18	16	M12	20	90

INOX

Presumable presence in the stock in %
 90% ● 40% ● 5% ●

F287



SOLID CROSS HANDWHEEL WITH STEEL/STAINLESS STEEL HUB AND BORED HOLE

Material:
Reinforced polyamide.
Oils and greases resistant.

Surface:
Satin.

Colour:
Black (RAL 9011).

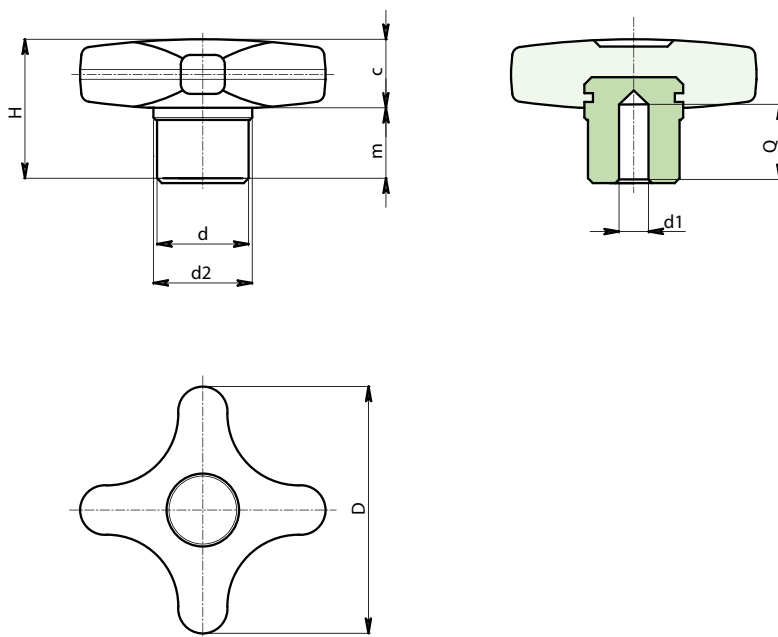
Inserts:
F287: Zinc plated steel insert with female blind smooth hole (tolerance H10).

F287CIN: Stainless steel (AISI 303) insert with female blind smooth hole (tolerance H9).



SPECIAL REQUESTS:

- It's possible to supply the inserts with d1 bore by customer design, on request and for quantities.
- It is possible to supply colours as shown in the table on page F-43, on request and for quantities.



Version F287: Zinc plated steel

Art.	D	d	d2	H	m	c	d1 H9	Q	g
F28732.TD0601	32	13	15	22	11	11	06	12	24
F28740.TD0801	40	14	16	24	12	12	08	14	35
F28750.TD1001	50	18	20	29	15	14	10	16	57
F28760.TD1201	60	20	24	34	18	16	12	20	85

Version F287 CIN: Stainless steel AISI 303

INOX

Art.	D	d	d2	H	m	c	d1 H9	Q	g
F28732.TD0601CIN	32	13	15	22	11	11	06	12	24
F28740.TD0801CIN	40	14	16	24	12	12	08	14	35
F28750.TD1001CIN	50	18	20	29	15	14	10	16	57
F28760.TD1201CIN	60	20	24	34	18	16	12	20	85

F288



SOLID CROSS HANDWHEEL WITH STEEL/STAINLESS STEEL HUB AND RIGHT THROUGH THREADED HOLE

Material:
Reinforced polyamide.
Oils and greases resistant.

Surface:
Satin.

Colour:
Black (RAL 9011).

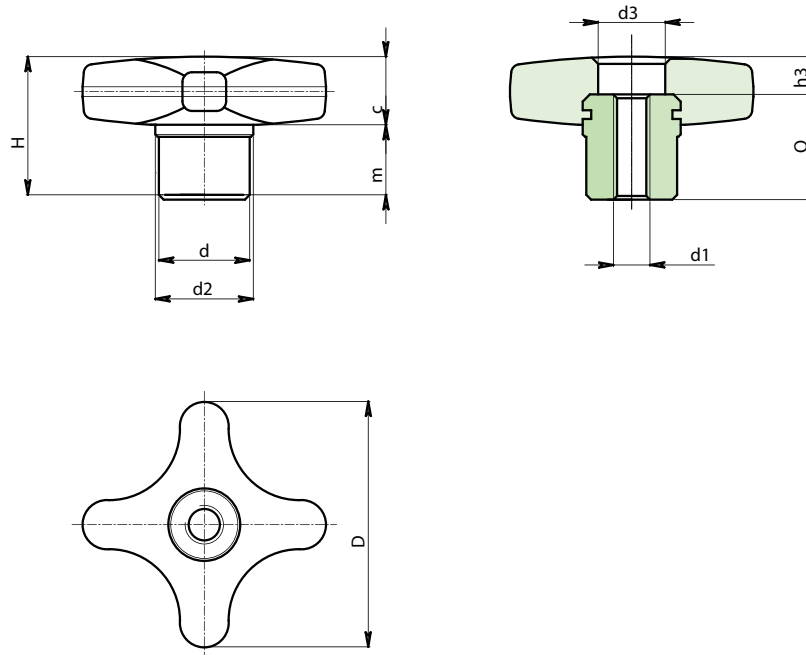
Inserts:
F288: Zinc plated steel insert with female right through threaded hole (tolerance 6H).

F288PIN: Stainless steel (AISI 303) insert with female right through threaded hole (tolerance 6H).



SPECIAL REQUESTS:

- It's possible to supply the inserts with d1 bore by customer design, on request and for quantities.
- It is possible to supply colours as shown in the table on page F-43, on request and for quantities.



Version F288: Zinc plated steel

Art.	D	d	d2	d3	H	h3	m	c	d1 6H	Q	Δ _g
F28832.TM0601	32	13	15	8	22	4	11	11	M06	18	21
F28840.TM0801	40	14	16	11	24	6	12	12	M08	18	28
F28850.TM1001	50	18	20	14	29	7	15	14	M10	22	49
F28860.TM1201	60	20	24	16	34	6	18	16	M12	28	81

Version F288 PIN: Stainless steel AISI 303

Art.	D	d	d2	d3	H	h3	m	c	d1 6H	Q	Δ _g
F28832.TM0601PIN	32	13	15	8	22	4	11	11	M06	18	21
F28840.TM0801PIN	40	14	16	11	24	6	12	12	M08	18	28
F28850.TM1001PIN	50	18	20	14	29	7	15	14	M10	22	49
F28860.TM1201PIN	60	20	24	16	34	6	18	16	M12	28	81

INOX

F289



SOLID CROSS HANDWHEEL WITH STEEL/STAINLESS STEEL HUB AND THREADED STUD

Material:
Reinforced polyamide.
Oils and greases resistant.

Surface:
Satin.

Colour:
Black (RAL 9011).

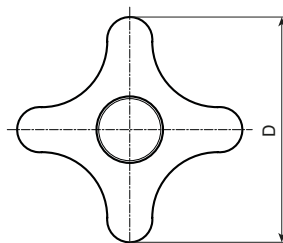
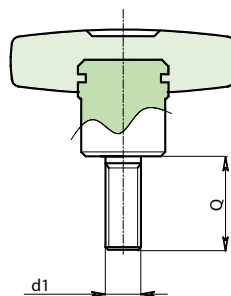
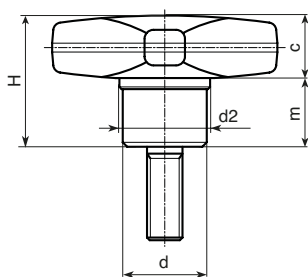
Inserts:
F289 Zinc plated steel insert with male threaded stud (tolerance 6g).

F289CIN: Stainless steel (AISI 303) insert with male threaded stud (tolerance 6g).



SPECIAL REQUESTS:

- It is possible to supply inserts in different lengths or by special design, on request and for quantities.
- It is possible to supply colours as shown in the table on page F-43, on request and for quantities.



Version **F289**: Zinc plated steel

Art.	D	d	d2	H	m	c	d1	6g	Q	LM	Δ g
● F28932.TM06X..01	32	13	15	22	11	11	M06	A.R.	45	-	-
● F28940.TM08X..01	40	14	16	24	12	12	M08	A.R.	55	-	-
● F28950.TM10X..01	50	18	20	29	15	14	M10	A.R.	60	-	-
● F28960.TM12X..01	60	20	24	34	18	16	M12	A.R.	60	-	-

Enter the stud length choice in the two .. of the article code.

LM = Maximum mouldable length.

A.R. = By request. Minimum order quantity 150 pcs.

Version **F289 CIN**: Stainless steel AISI 303

Art.	D	d	d2	H	m	c	d1	6g	Q	LM	Δ g
● F28932.TM06X..01CIN	32	13	15	22	11	11	M06	A.R.	35	-	-
● F28940.TM08X..01CIN	40	14	16	24	12	12	M08	A.R.	45	-	-
● F28950.TM10X..01CIN	50	18	20	29	15	14	M10	A.R.	50	-	-
● F28960.TM12X..01CIN	60	20	24	34	18	16	M12	A.R.	50	-	-

Enter the stud length choice in the two .. of the article code.

LM = Maximum mouldable length.

A.R. = By request. Minimum order quantity 150 pcs.

F661-F761



SOLID 3 LOBE HANDWHEEL WITH FEMALE THREADED INSERT

Material:

Reinforced polyamide. Oils and greases resistant.

Surface: Satin.

Colour: Black (RAL 9011).

Main Insert:

Brass blind threaded bush (tolerance 6H).

(*) Zinc plated steel blind threaded bush

(tolerance 6H).

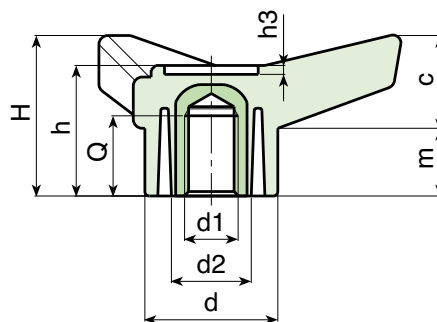
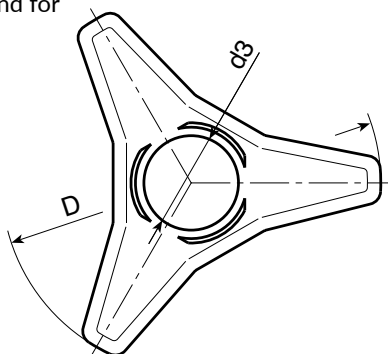
Hub:

F661= Solid version.

F761= Hollow underneath version.

SPECIAL REQUESTS:

- It is possible to supply the inserts in different materials, on request and for quantities.
- It is possible to supply colours as shown in the table on page F-43, on request and for quantities.



Version F761: Hollow underneath hub

Art.	D	H	h	d	c	m	d2	d3	h3	d1 6H	Q	Δ g
● F761085.TM0801	85	37	30,5	30	21	16	18/-	21	2	M08	15	53
● F761085.TM1001	85	37	30,5	30	21	16	18/-	21	2	M10	14	55
● F761085.TM1201	85	37	30,5	30	21	16	18/-	21	2	M12	19	60
● F761105.TM0801	105	46	37,5	35	26	19	20/-	25	2	M08	15	89
● F761105.TM1001	105	46	37,5	35	26	19	20/-	25	2	M10	17	90
● F761105.TM1201	105	46	37,5	35	26	19	20/-	25	2	M12	17	97
● F761105.TM1401	105	46	37,5	35	26	19	20/-	25	2	M14	19	98
● F761125.TM1201	125	54	44	42,5	31	23	26/-	28,5	2	M12	18	160
● F761125.TM1401	125	54	44	42,5	31	23	26/-	28,5	2	M14	18	165

Version F661: Solid hub

Art.	D	H	h	d	c	m	d2	d3	h3	d1 6H	Q	Δ g
● F661045.TM0601	45	21	18	16	11	10	-/-	11	1	M06	9	10
● F661045.TM0801	45	21	18	16	11	10	-/-	11	1	M08	11	14
● F661045.TM1001	45	21	18	16	11	10	-/-	11	1	M10	10	15
● F661065.TM0801	65	28	23,5	22	16,5	11,5	-/-	15,5	1,5	M08	11	28
● F661065.TM1001	65	28	23,5	22	16,5	11,5	-/-	15,5	1,5	M10	11	29
● F661065.TM1201	65	28	23,5	22	16,5	11,5	-/-	15,5	1,5	M12	13	31
● F661085.TM0801	85	37	30,5	30	21	16	18/-	21	2	M08	15	53
● F661085.TM1001	85	37	30,5	30	21	16	18/-	21	2	M10	14	55
● F661085.TM1201	85	37	30,5	30	21	16	18/-	21	2	M12	19	60
● F661105.TM0801	105	46	37,5	35	26	19	20/-	25	2	M08	15	89
● F661105.TM1001	105	46	37,5	35	26	19	20/-	25	2	M10	17	90
● F661105.TM1201	105	46	37,5	35	26	19	20/-	25	2	M12	17	97
● F661105.TM1401	105	46	37,5	35	26	19	20/-	25	2	M14	19	98
● F661125.TM1201	125	54	44	42,5	31	23	26/-	28,5	2	M12	18	160
● F661125.TM1401	125	54	44	42,5	31	23	26/-	28,5	2	M14	18	165
● F661125.TM1601	125	54	44	42,5	31	23	-/-	28,5	2	(*) M16	21	177
● F661125.TM1801	125	54	44	42,5	31	23	-/-	28,5	2	(*) M18	21	182

Presumable presence in the stock in %
 90% ● 40% ● 5% ●

F

F662



SOLID 3 LOBE HANDWHEEL WITH FEMALE BORED INSERT

Material:
Reinforced polyamide.
Oils and greases resistant.

Surface:
Satin.

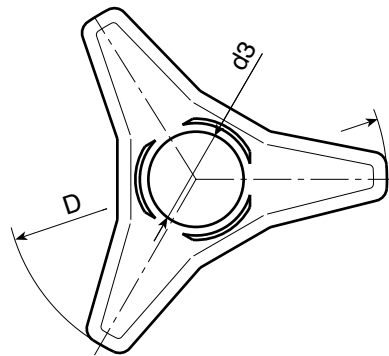
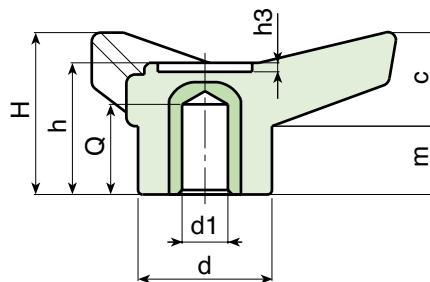
Colour:
Black (RAL 9011).

Main Insert:
Zinc plated steel bush with smooth hole
(bore tolerance H10).



SPECIAL REQUESTS:

- It's possible to supply the inserts with d1 bore by customer design, on request and for quantities.
- It is possible to supply the inserts in different materials, on request and for quantities.
- It is possible to supply colours as shown in the table on page F-43, on request and for quantities.



Art.	D	H	h	d	c	m	d3	h3	dm	d1 H10	Q	g
F662045.TD0601	45	21	18	16	11	10	11	1	-	06	8	14
F662065.TD0501	65	28	23,5	22	16,5	11,5	15,5	1,5	10	05	13	36
F662065.TD1001	65	28	23,5	22	16,5	11,5	15,5	1,5	10	10	13	34
F662085.TD0501	85	37	30,5	30	21	16	21	2	16	05	19	72
F662085.TD1001	85	37	30,5	30	21	16	21	2	16	10	19	70
F662085.TD1201	85	37	30,5	30	21	16	21	2	16	12	19	69
F662085.TD1401	85	37	30,5	30	21	16	21	2	16	14	19	65
F662105.TD0501	105	46	37,5	35	26	19	25	2	18	05	24	100
F662105.TD1201	105	46	37,5	35	26	19	25	2	18	12	24	98
F662105.TD1401	105	46	37,5	35	26	19	25	2	18	14	24	95
F662105.TD1601	105	46	37,5	35	26	19	25	2	18	16	24	90
F662125.TD0801	125	54	44	42,5	31	23	28	2	22	08	26	192

Attention: bore d1 (H10 tolerance) could be produced by request, with 50 pieces minimum.

Dm = It's possible to increase the hole, by boring, until Dm (enlarge).

F663-F763



SOLID 3 LOBE HANDWHEEL WITH FEMALE RIGTH THROUGH THREADED INSERT

Material:

Reinforced polyamide. Oils and greases resistant.

Surface: Satin.

Colour: Black (RAL 9011).

Main Insert:

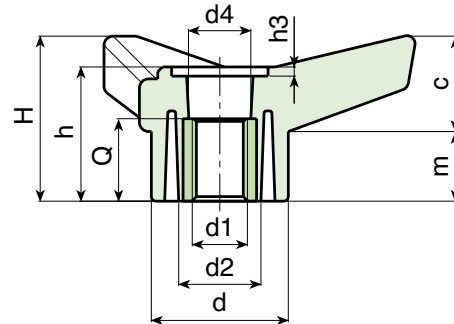
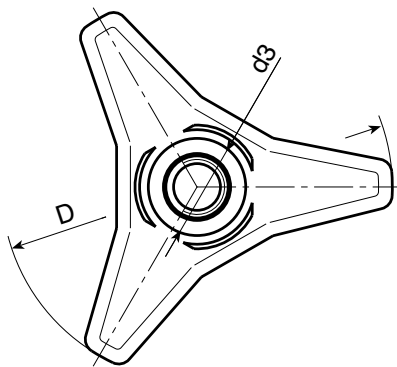
Brass right through threaded bush (tolerance 6H).
(*) Zinc plated steel insert with right through threaded bore. (thred tolerance 6H).

Hub:

F663= Solid version.
F763= Hollow underneath version.

SPECIAL REQUESTS:

- It is possible to supply the inserts in different materials, on request and for quantities.
- It is possible to supply colours as shown in the table on page F-43, on request and for quantities.



Version F763: Hollow underneathhub

Art.	D	H	h	d	c	m	d2	d3	d4	h3	d1 6H	Q	Δ g
F763085.TM0801	85	37	30,5	30	21	16	18/-	21	13	2	M08	13,5	50
F763085.TM1001	85	37	30,5	30	21	16	18/-	21	13	2	M10	13,5	52
F763085.TM1201	85	37	30,5	30	21	16	18/-	21	13	2	M12	13,5	52
F763105.TM1001	105	46	37,5	35	26	19	20/-	25	23,5	2	M10	23	88
F763105.TM1201	105	46	37,5	35	26	19	20/-	25	23,5	2	M12	23	88
F763105.TM1401	105	46	37,5	35	26	19	20/-	25	23,5	2	M14	21	91
F763125.TM1201	125	54	44	42,5	31	23	26/-	28,5	26	2	M12	31	152
F763125.TM1401	125	54	44	42,5	31	23	26/-	28,5	26	2	M14	31	160

Version F663: Solid hub

Art.	D	H	h	d	c	m	d2	d3	d4	h3	d1 6H	Q	Δ g
F663045.TM0601	45	21	18	16	11	10	-/-	11	10	1	M06	12,5	11
F663045.TM0801	45	21	18	16	11	10	-/-	11	10	1	M08	12,5	11
F663045.TM1001	45	21	18	16	11	10	-/-	11	10	1	M10	12,5	11
F663065.TM0801	65	28	23,5	22	16,5	11,5	-/-	15,5	13,5	1,5	M08	15,5	25
F663065.TM1001	65	28	23,5	22	16,5	11,5	-/-	15,5	13,5	1,5	M10	15,5	26
F663065.TM1201	65	28	23,5	22	16,5	11,5	-/-	15,5	13,5	1,5	M12	15,5	28
F663085.TM0801	85	37	30,5	30	21	16	18/-	21	13	2	M08	13,5	50
F663085.TM1001	85	37	30,5	30	21	16	18/-	21	13	2	M10	13,5	52
F663085.TM1201	85	37	30,5	30	21	16	18/-	21	13	2	M12	13,5	52
F663105.TM1001	105	46	37,5	35	26	19	20/-	25	23,5	2	M10	23	88
F663105.TM1201	105	46	37,5	35	26	19	20/-	25	23,5	2	M12	23	88
F663105.TM1401	105	46	37,5	35	26	19	20/-	25	23,5	2	M14	21	91
F663105.TM1601	105	46	37,5	35	26	19	-/-	25	23,5	2	(*) M16	21	108
F663125.TM1201	125	54	44	42,5	31	23	26/-	28,5	26	2	M12	31	152
F663125.TM1401	125	54	44	42,5	31	23	26/-	28,5	26	2	M14	31	160
F663125.TM1601	125	54	44	42,5	31	23	-/-	28,5	26	2	(*) M16	31	180
F663125.TM1801	125	54	44	42,5	31	23	-/-	28,5	26	2	(*) M18	31	186

Presumable presence in the stock in %
 90% ● 40% ● 5% ●

F664-F764



SOLID 3 LOBE HANDWHEEL WITH MALE THREADED STUD

Material:
Reinforced polyamide.
Oils and greases resistant.

Surface:
Satin.

Colour:
Black (RAL 9011).

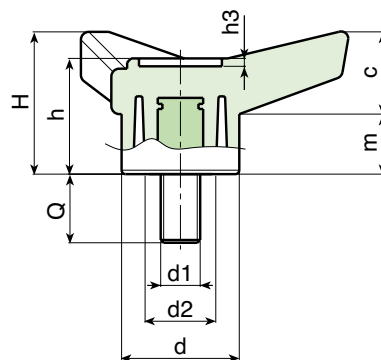
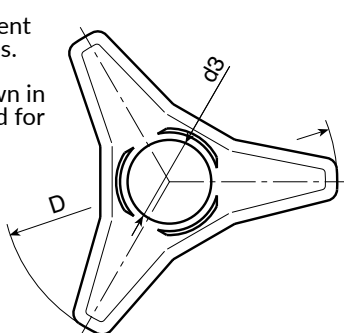
Main Insert:
Zinc plated steel threaded stud (tolerance 6g).

Hub:
F664= Solid version.
F764= Hollow underneath version.



SPECIAL REQUESTS:

- It is possible to supply inserts in different lengths or by special design, on request and for quantities.
- It is possible to supply inserts in different materials, on request and for quantities.
- It is possible to supply colours as shown in the table on page F-43, on request and for quantities.



Version F764: Hollow underneath hub

Art.	D	H	h	d	c	m	d2	d3	h3	LM	d1 6g	Q	Δ g
F764085.TM08X..01	85	37	30,5	30	21	16	18/-	21	2	60	M08	20-30-40	61-65-69
F764085.TM10X..01	85	37	30,5	30	21	16	18/-	21	2	60	M10	20-30-40	66-74-80
F764085.TM12X..01	85	37	30,5	30	21	16	18/-	21	2	60	M12	20-30	83-89
F764105.TM10X..01	105	46	37,5	35	26	19	20/-	25	2	80	M10	30-50	116-122
F764105.TM12X..01	105	46	37,5	35	26	19	20/-	25	2	80	M12	30-50	121-136
F764105.TM14X..01	105	46	37,5	35	26	19	20/-	25	2	80	M14	A.R.	-
F764125.TM12X..01	125	54	44	42,5	31	23	26/-	28,5	2	100	M12	A.R.	-
F764125.TM14X..01	125	54	44	42,5	31	23	26/-	28,5	2	100	M14	A.R.	-

Version F664: Solid hub

Art.	D	H	h	d	c	m	d2	d3	h3	LM	d1 6g	Q	Δ g
F664045.TM06X..01	45	21	18	16	11	10	-/-	11	1	60	M06	20-30	14-17
F664045.TM08X..01	45	21	18	16	11	10	-/-	11	1	60	M08	20-25-30	19-20,5-22
F664045.TM10X..01	45	21	18	16	11	10	-/-	11	1	60	M10	A.R.	-
F664065.TM08X..01	65	28	23,5	22	16,5	11,5	-/-	15,5	1,5	80	M08	20-25-30	36-37,5-39
F664065.TM10X..01	65	28	23,5	22	16,5	11,5	-/-	15,5	1,5	80	M10	20-30-50	43-47-55
F664065.TM12X..01	65	28	23,5	22	16,5	11,5	-/-	15,5	1,5	80	M12	A.R.	-
F664085.TM08X..01	85	37	30,5	30	21	16	18/-	21	2	60	M08	20-25-30	61-65-69
F664085.TM10X..01	85	37	30,5	30	21	16	18/-	21	2	60	M10	25-30-40	66-74-80
F664085.TM12X..01	85	37	30,5	30	21	16	18/-	21	2	60	M12	20-30-40	83-87-94
F664105.TM10X..01	105	46	37,5	35	26	19	20/-	25	2	80	M10	20-30-40	113-116-122
F664105.TM12X..01	105	46	37,5	35	26	19	20/-	25	2	80	M12	30-50	121-136
F664105.TM14X5001	105	46	37,5	35	26	19	20/-	25	2	80	M14	50	152
F664125.TM12X3001	125	54	44	42,5	31	23	26/-	28,5	2	100	M12	30	200
F664125.TM14X3001	125	54	44	42,5	31	23	26/-	28,5	2	100	M14	30	219
F664125.TM16X3001	125	54	44	42,5	31	23	-/-	28,5	2	100	M16	30	232
F664125.TM18X..01	125	54	44	42,5	31	23	-/-	28,5	2	100	M18	A.R.	-




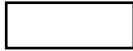







Enter the stud length choice in the two .. of the article code. Lengths by request with 150 pieces minimum quantity.

LM = Maximum mouldable length.

A.R. = By request. Minimum order quantity 150 pcs.

COLOUR CHART

RAL COLOURS CODING

Colour		RAL	Cod.
Black		9011	01
Orange		2004	02
Orange		2011	03
White		9010	04
Blue		5015	07
Yellow		1007	09
Yellow		1021	10
Grey		7024	12
Grey		7035	13
Red		3000	16
Green		6024	17

F

AUTHORISED RESELLER

BOTECO Srl

www.boteco.it

36010 ZANE' (VI) - ITALY

Via L. Pettinà 16 (side street of Via Cuso)

Switchboard Tel.:+39-0445-316411 - Fax:+39-0445-316400

Sales Fax:+39-0445-316401 mail: commerciale@boteco.it

Administration Fax:+39-0445-316402 mail: amministrazione@boteco.it

Technical Fax:+39-0445-316404 mail: tecnico@boteco.it

Certified Mail Box: boteco@pec.botecopec.it

