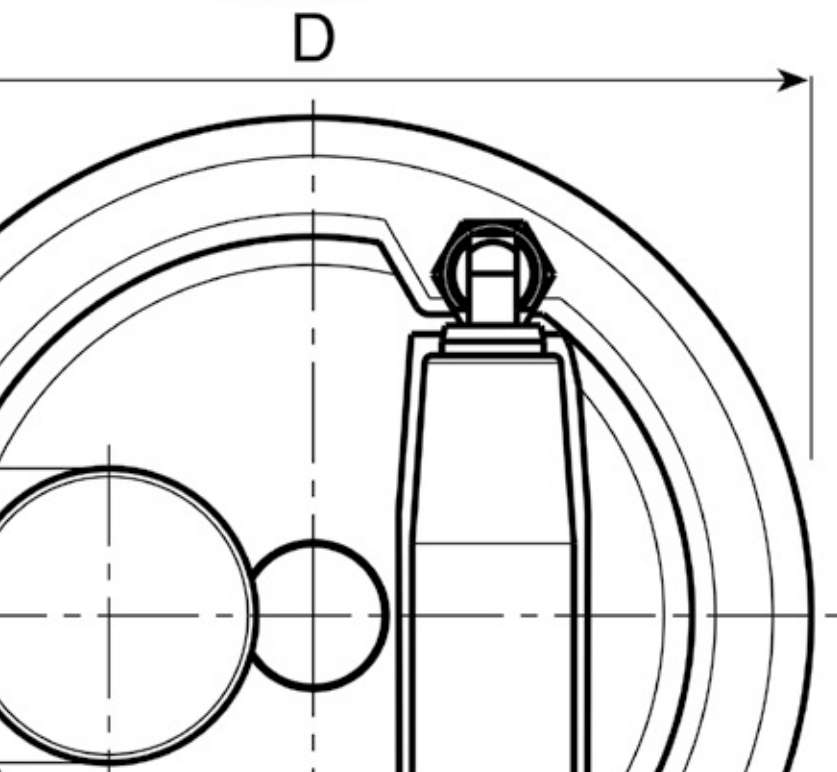




BOTECO[®]

Family C

SOLID CONTROL HANDWHEELS



C196



SOLID CONTROL HANDWHEEL

Material:

Reinforced and stabilised polyamide.
Oils and greases resistant.

Surface:

Satin.

Colour:

Black (RAL 9011).

Central Cap:

Grey polyamide (RAL 7035 cod. 13).

Alternative Cap Colour:

Orange (RAL 2004 cod. 02)
Blue (RAL 5015 cod. 07)
Yellow (RAL 1021 cod. 10)
Red (RAL 3000 cod. 16)
Green (RAL 6024 cod. 17)
Black (RAL 9011 cod. 01)

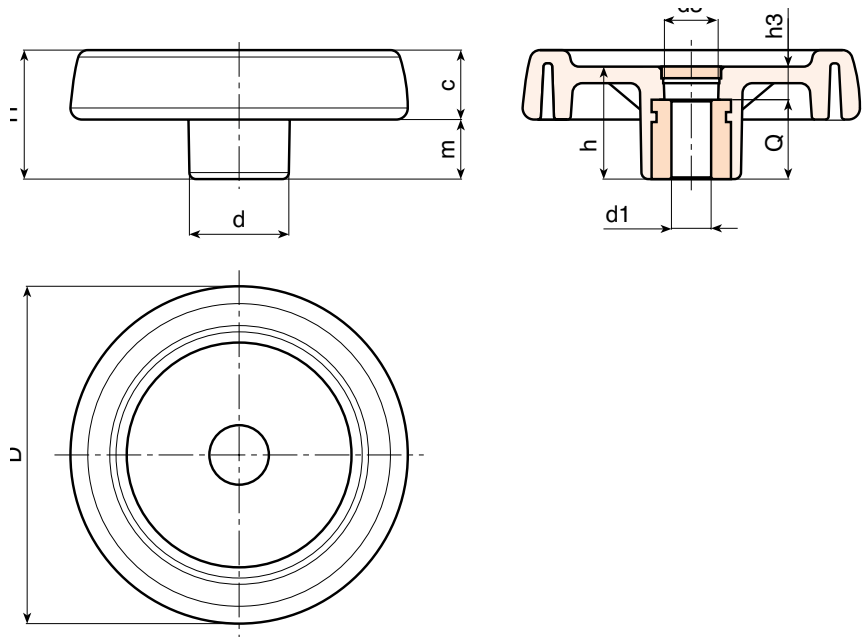
Main Insert:

Zinc plated steel insert with smooth through-hole (H10 tolerance).

For fixing system, or execution of keyway or square holes, please refer to the technical notes attached to the catalogue.

SPECIAL REQUEST:

- Upon request and for a minimum of 50 pieces inserts can be supplied with hole d1 with tolerance H7 and black oxide treated surface. Add letters ZB to the standard code. Example: C196125.TD1201PZB.
- It's possible to supply the inserts with d1 bore by customer design, on request and for quantities.
- It's possible to supply the inserts in different material and treatment-finishes, on request and for quantities.
- It's possible to supply the products with colours (reduced range) as shown in the table at page C-11, on request and for quantities.



Version with zinc plated insert and H10 tolerance bore

	Art.	D	H	h	d	m	c	d3	h3	Dm	d1 H10	Q	g
●	C196080.TP0501P	81	33	29	25	16	17	16	9	12	05	20	100
●	C196080.TD0801P	81	33	29	25	16	17	16	9	12	08	20	99
●	C196080.TD1001P	81	33	29	25	16	17	16	9	12	10	20	99
●	C196080.TD1201P	81	33	29	25	16	17	16	9	12	12	20	98
●	C196100.TP0501P	100	39	34	30	18,5	20,5	16	10	16	05	24	192
●	C196125.TP0501P	125	44	37	36	20	24	26	13	18	05	24	295
●	C196125.TD1201P	125	44	37	36	20	24	26	13	18	12	24	290
●	C196150.TD0801P	150	54	44	38	25	29	26	12	22	08	32	520
●	C196150.TD1401P	150	54	44	38	25	29	26	12	22	14	32	515
●	C196175.TD0801P	173	57	47	40	25,5	31,5	26	15	22	08	32	660
●	C196200.TD0801P	202	59	49	44	24	35	27	13	28	08	36	870
●	C196250.TD0801P	249	68	58	59	29	39	36	22	28	08	36	1420

Attention: bore d1 (H10 tolerance) could be produced by request, with 50 pieces minimum.

Dm = It's possible to increase the hole, by boring, until Dm (enlarge).

C198



SOLID CONTROL HANDWHEEL WITH REVOLVING FOLDING HANDLE

Material:
Reinforced and stabilised polyamide.
Oils and greases resistant.

Surface:
Satin.

Colour:
Black (RAL 9011).

Central Cap:
Grey polyamide (RAL 7035 cod. 13).

Alternative Cap Colour:
Orange (RAL 2004 cod. 02)
Blue (RAL 5015 cod. 07)
Yellow (RAL 1021 cod. 10)
Red (RAL 3000 cod. 16)
Green (RAL 6024 cod. 17)
Black (RAL 9011 cod. 01)

Main Insert:
Zinc plated steel insert with smooth through-hole (H10 tolerance).

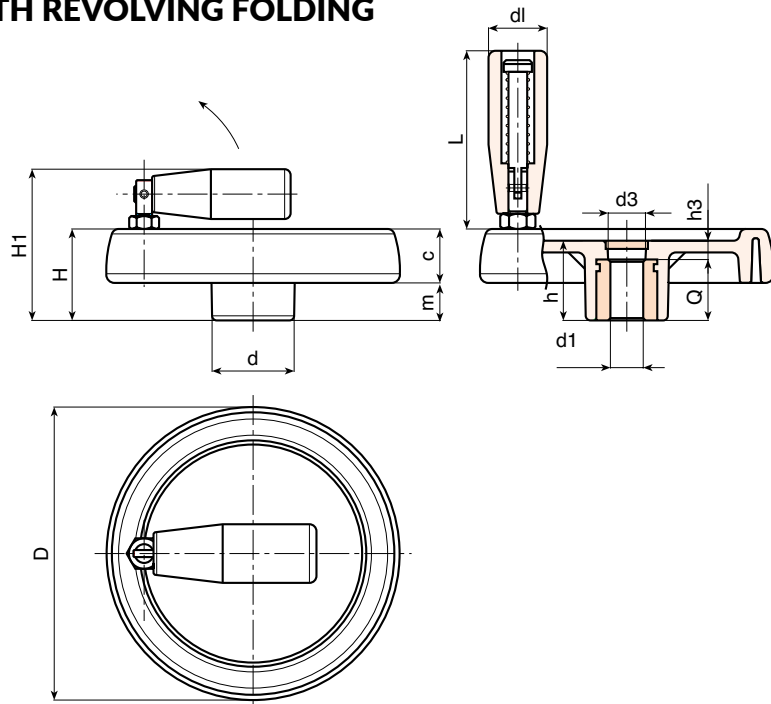
Side Insert:
Brass right through threaded bush.

Side handle:
Revolving and folding handle M136 (pag. M-16).

For fixing system, or execution of keyway or square holes, please refer to the technical notes attached to the catalogue.

SPECIAL REQUEST:

- Upon request and for a minimum of 50 pieces inserts can be supplied with hole d1 with tolerance H7 and black oxide treated surface. Add letters ZB to the standard code. Example: **C198150.TD1401PZB**.
- It's possible to supply the inserts with d1 bore by customer design, on request and for quantities.
- It's possible to supply the inserts in different material and treatment-finishes, on request and for quantities.
- It's possible to supply the products with colours (reduced range) as shown in the table at page C-11, on request and for quantities.



Version with zinc plated insert and H10 tolerance bore

Art.	D	H	H1	h	d	m	c	d3	h3	dl	L	Dm	d1 H10	Q	g
● C198080.TP0501P	81	33	57	29	25	16	17	16	9	20	56	12	05	20	145
● C198080.TD0801P	81	33	57	29	25	16	17	16	9	20	56	12	08	20	144
● C198100.TP0501P	100	39	63	34	30	18,5	20,5	16	10	20	56	16	05	24	235
● C198100.TD1001P	100	39	63	34	30	18,5	20,5	16	10	20	56	16	10	24	233
● C198125.TP0501P	125	44	74	37	36	20	24	26	13	25	76	18	05	24	360
● C198125.TD1201P	125	44	74	37	36	20	24	26	13	25	76	18	12	24	355
● C198125.TD1401P	125	44	74	37	36	20	24	26	13	25	76	18	14	24	353
● C198150.TD0801P	150	54	89	44	38	25	29	26	12	26	89	22	08	32	670
● C198150.TD1201P	150	54	89	44	38	25	29	26	12	26	89	22	12	32	665
● C198150.TD1401P	150	54	89	44	38	25	29	26	12	26	89	22	14	32	663
● C198175.TD0801P	173	57	92	47	40	25,5	31,5	26	15	26	97	22	08	32	810
● C198175.TD1601P	173	57	92	47	40	25,5	31,5	26	15	26	97	22	16	32	800
● C198175.TD2001P	173	57	92	47	40	25,5	31,5	26	15	26	97	22	20	32	797
● C198200.TD0801P	202	59	94	49	44	24	35	27	13	26	97	28	08	36	1030
● C198200.TD2001P	202	59	94	49	44	24	35	27	13	26	97	28	20	36	1015
● C198250.TD0801P	249	68	100	58	59	29	39	36	22	26	97	28	08	36	1580

Attention: bore d1 (H10 tolerance) could be produced by request, with 50 pieces minimum.

Dm = It's possible to increase the hole, by boring, until Dm (enlarge).

C197



SOLID CONTROL HANDWHEEL WITH REVOLVING HANDLE

Material:

Reinforced and stabilised polyamide.
Oils and greases resistant.

Surface:

Satin.

Colour:

Black (RAL 9011).

Central Cap:

Grey polyamide (RAL 7035 cod. 13).

Alternative Cap Colour:

Orange (RAL 2004 cod. 02)
Blue (RAL 5015 cod. 07)
Yellow (RAL 1021 cod. 10)
Red (RAL 3000 cod. 16)
Green (RAL 6024 cod. 17)
Black (RAL 9011 cod. 01)

Main Insert:

Zinc plated steel insert with smooth through-hole (H10 tolerance).

Side Insert:

Brass right through threaded bush.

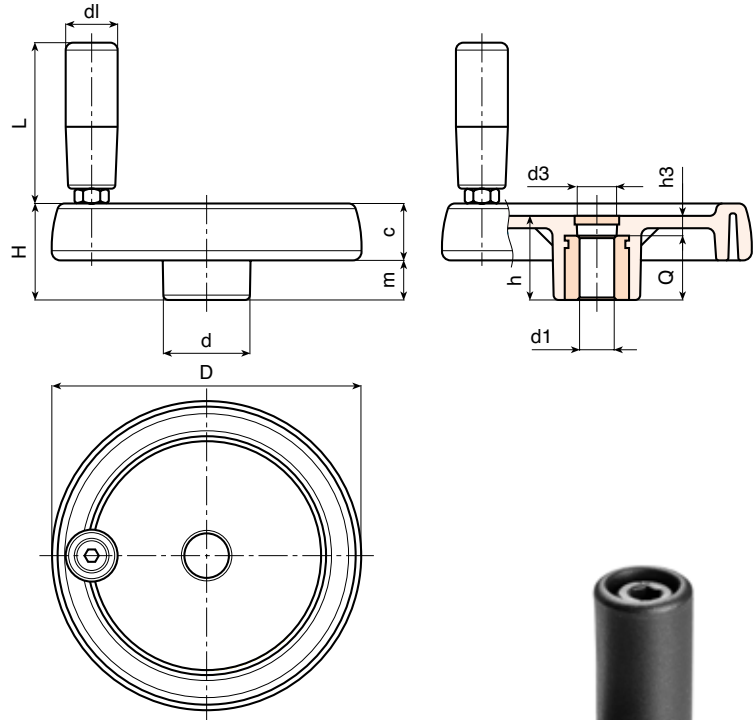
Side handle:

Revolving handle M144 (pag. M-08).

For fixing system, or execution of keyway or square holes, please refer to the technical notes attached to the catalogue.

SPECIAL REQUEST:

- Upon request and for a minimum of 50 pieces inserts can be supplied with hole d1 with tolerance H7 and black oxide treated surface. Add letters **ZB** to the standard code. Example: **C197100.TD1001PZB**.
- It's possible to supply the inserts with d1 bore by customer design, on request and for quantities.
- It's possible to supply the inserts in different material and treatment-finishes, on request and for quantities.
- It's possible to supply the products with colours (reduced range) as shown in the table at page C-11, on request and for quantities.



Version with zinc plated insert and H10 tolerance bore

Art.	D	H	h	d	m	c	d3	h3	dl	L	Dm	d1 H10	Q	g
C197080.TP0501P	81	33	29	25	16	17	16	9	20	56	12	05	20	130
C197080.TD0801P	81	33	29	25	16	17	16	9	20	56	12	08	20	129
C197100.TP0501P	100	39	34	30	18,5	20,5	16	10	20	56	16	05	24	192
C197100.TD1001P	100	39	34	30	18,5	20,5	16	10	20	56	16	10	24	190
C197125.TP0501P	125	44	37	36	20	24	26	13	21	65	18	05	24	351
C197125.TD1201P	125	44	37	36	20	24	26	13	21	65	18	12	24	342
C197125.TD1401P	125	44	37	36	20	24	26	13	21	65	18	14	24	340
C197150.TD0801P	150	54	44	38	25	29	26	12	23	76	22	08	32	588
C197150.TD1201P	150	54	44	38	25	29	26	12	23	76	22	12	32	580
C197150.TD1401P	150	54	44	38	25	29	26	12	23	76	22	14	32	577
C197175.TD0801P	173	57	47	40	25,5	31,5	26	15	25	86	22	08	32	770
C197175.TD1601P	173	57	47	40	25,5	31,5	26	15	25	86	22	16	32	755
C197175.TD2001P	173	57	47	40	25,5	31,5	26	15	25	86	22	20	32	751
C197200.TD0801P	202	59	49	44	24	35	27	13	25	86	28	08	36	980
C197200.TD2001P	202	59	49	44	24	35	27	13	25	86	28	08	36	960
C197250.TD0801P	249	68	58	59	29	39	36	22	25	86	28	08	36	1530

Attention: bore d1 (H7 tolerance) could be produced by request, with 50 pieces minimum.

Dm = It's possible to increase the hole, by boring, until Dm (enlarge).

A.R. = By request

C193



SOLID CONTROL HANDWHEEL WITH REVOLVING HANDLE M145

	Art.	D	dl	L	d1 H10	g
●	C193080.TP0501P	81	20	55	05	135
●	C193100.TP0501P	100	20	55	05	220
●	C193125.TP0501P	125	23	66	05	370
●	C193150.TD0801P	150	25	76	08	594
●	C193175.TD0801P	173	25	87	08	750
●	C193200.TD0801P	202	27	96	08	965
●	C193250.TD0801P	249	27	96	08	1500

Side handle: Revolving handle type M145 (page M-14).

For further details see art. C197

C194



SOLID CONTROL HANDWHEEL WITH REVOLVING HANDLE M129

	Art.	D	dl	L	d1 H10	g
●	C194080.TP0501P	81	20	52	05	145
●	C194100.TP0501P	100	20	52	05	235
●	C194125.TP0501P	125	23	62	05	350
●	C194150.TD0801P	150	25	72	08	610
●	C194175.TD0801P	173	25	81	08	755
●	C194200.TD0801P	202	27	93	08	975
●	C194250.TD0801P	249	27	93	08	1520

Side handle: Revolving handle type M129 (page M-10).

For further details see art. C197

C195



SOLID CONTROL HANDWHEEL WITH REVOLVING HANDLE M202

	Art.	D	dl	L	d1 H10	g
●	C195150.TD0801P	150	40	64	08	610
●	C195175.TD0801P	173	40	64	08	750
●	C195200.TD0801P	202	40	64	08	960
●	C195250.TD0801P	249	40	64	08	1490

Side handle: Revolving handle type M202 (page M-18).

For further details see art. C197



C-BASE



BASE FOR SOLID CONTROL HANDWHEEL WITH PROVISION FOR HANDLE

	Art.	D	d1 H10	g	Side handle thread
●	C080.TP0501PZ1	81	05	100	M06
●	C100.TP0501PZ1	100	05	190	M06
●	C125.TP0501PZ1	125	05	290	M08
●	C150.TD0801PZ1	150	08	520	M10
●	C175.TD0801PZ1	173	08	660	M10
●	C200.TD0801PZ1	202	08	870	M10
●	C250.TD0801PZ1	249	08	1400	M10

For further details see art. C197

C199



SOLID CONTROL HANDWHEEL WITH FOLDAWAY REVOLVING HANDLE

Material:

Reinforced and stabilised polyamide.
Oils and greases resistant.

Surface:

Satin.

Colour:

Black (RAL 9011).

Central Cap:

Grey polyamide (RAL 7035 cod. 13).

Alternative Cap Colour:

Orange (RAL 2004 cod. 02)
Blue (RAL 5015 cod. 07)
Yellow (RAL 1021 cod. 10)
Red (RAL 3000 cod. 16)
Green (RAL 6024 cod. 17)
Black (RAL 9011 cod. 01)

Main Insert:

Zinc plated steel insert with smooth through-hole (H10 tolerance).

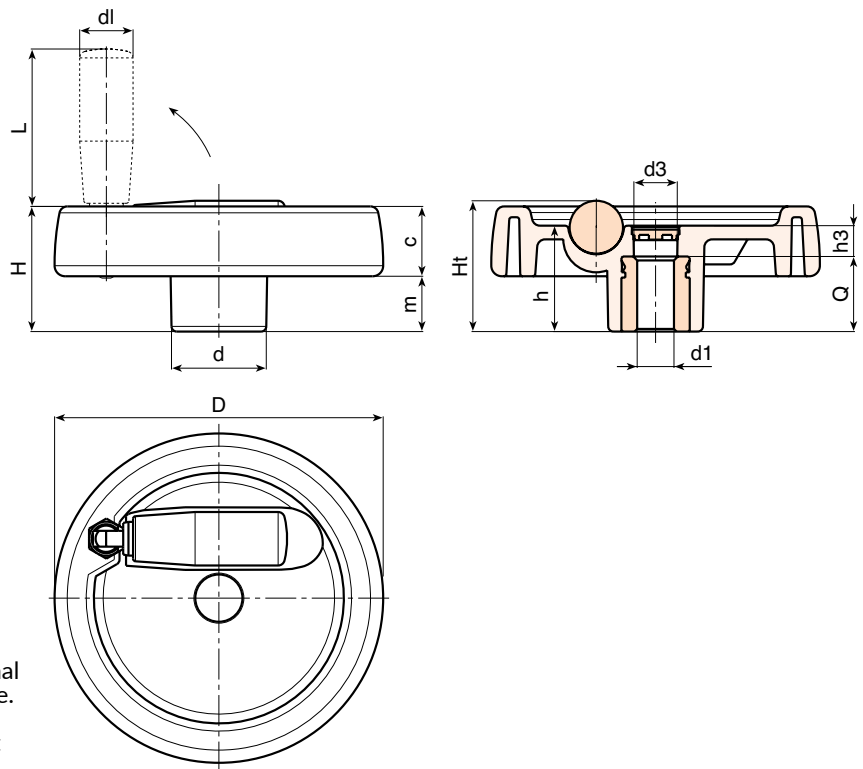
Side Handle:

Flush, foldaway revolving handle, with hexagonal connection. Reinforced polyamide black handle. Black-oxide treated internal mechanism. Fixed with black-oxide treated hexagon socket button head screw ISO 7838.

For fixing system, or execution of keyway or square holes, please refer to the technical notes attached to the catalogue.

SPECIAL REQUEST:

- Upon request and for a minimum of 50 pieces inserts can be supplied with hole d1 with tolerance H7 and black oxide treated surface. Add letters **ZB** to the standard code. Example: **C199ISO.TD1401PZB**.
- It's possible to supply the inserts with d1 bore by customer design, on request and for quantities.
- It's possible to supply the inserts in different material and treatment-finishes, on request and for quantities.
- It's possible to supply the products with colours (reduced range) as shown in the table at page C-11, on request and for quantities.



Version with zinc plated insert and H10 tolerance bore

	Art.	D	H	Ht	h	d	m	c	d3	h3	d1	L	Dm	d1 H10	Q	g
●	C199125.TP0501P	124	48	49,5	40	36	21,5	26,5	15	16	20	38	18	05	24	349
●	C199125.TD1201P	124	48	49,5	40	36	21,5	26,5	15	16	20	38	18	12	24	343
●	C199150.TD0801P	149	53	-	44	38	24,5	28,5	26	12	20	58	22	08	32	500
●	C199150.TD1401P	149	53	-	44	38	24,5	28,5	26	12	20	58	22	14	32	493
●	C199150.TD2001P	149	53	-	44	38	24,5	28,5	26	12	20	58	22	20	32	488
●	C199175.TD0801P	174	58	-	48	40	24,5	33,5	26	16	26	80	28	08	32	715
●	C199175.TD1601P	174	58	-	48	40	24,5	33,5	26	16	26	80	28	16	32	707
●	C199200.TD0801P	198	63	-	53	44	24,5	38,5	26	17	27	90	28	08	36	1015
●	C199250.TD0801P	250	67	-	58	60	29	38	36	22	27	90	28	08	36	1500

Attention: bore d1 (H7 tolerance) could be produced by request, with 50 pieces minimum.

Dm = It's possible to increase the hole, by boring, until Dm (enlarge).

A.R. = By request

C199C



SOLID CONTROL HANDWHEEL WITH CENTRAL FOLDAWAY REVOLVING HANDLE

Material:

Reinforced and stabilised polyamide.
Oils and greases resistant.

Surface:

Satin.

Colour:

Black (RAL 9011).

Central Cap:

Grey polyamide (RAL 7035 cod. 13).

Alternative Cap Colour:

Orange (RAL 2004 cod. 02)
Blue (RAL 5015 cod. 07)
Yellow (RAL 1021 cod. 10)
Red (RAL 3000 cod. 16)
Green (RAL 6024 cod. 17)
Black (RAL 9011 cod. 01)

Main Insert:

Zinc plated steel insert with smooth through-hole (H10 tolerance).

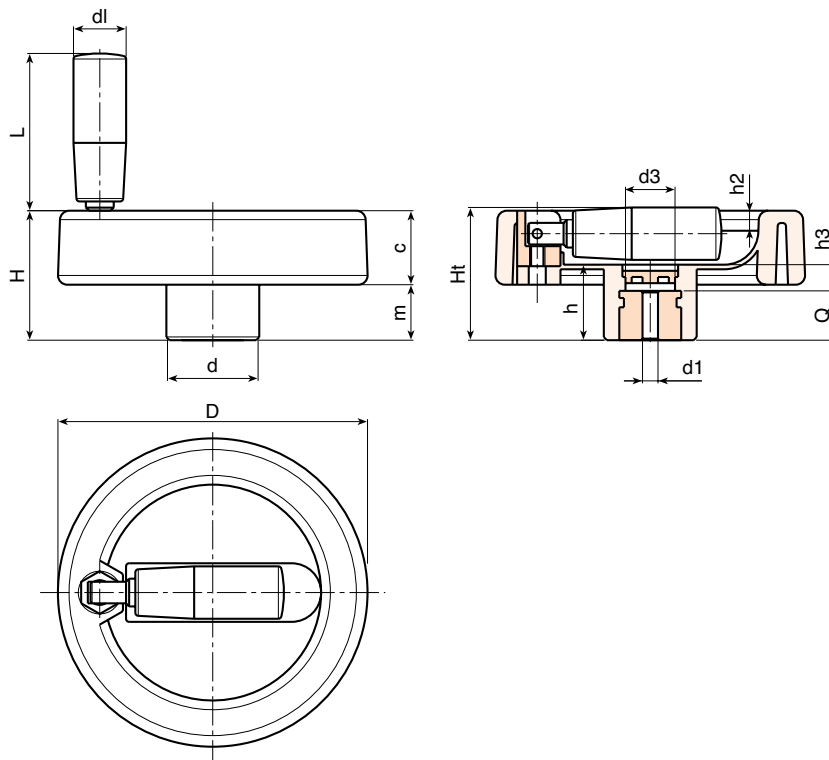
Side Handle:

Flush, foldaway revolving handle, with hexagonal connection. Reinforced polyamide black handle. Black-oxide treated internal mechanism. Fixed with black-oxide treated hexagon socket button head screw ISO 7838.

For fixing system, or execution of keyway or square holes, please refer to the technical notes attached to the catalogue.

SPECIAL REQUEST:

- Upon request and for a minimum of 50 pieces inserts can be supplied with hole d1 with tolerance H7 and black oxide treated surface. Add letters **ZB** to the standard code. Example: **C199100.TD1001PZB**.
- It's possible to supply the inserts with d1 bore by customer design, on request and for quantities.
- It's possible to supply the inserts in different material and treatment-finishes, on request and for quantities.
- It's possible to supply the products with colours (reduced range) as shown in the table at page C-11, on request and for quantities.



Version with zinc plated insert and H10 tolerance bore

Art.	D	H	Ht	h	d	m	c	d3	h3	h2	dl	L	Dm	d1 H10	Q	g
C199080.TP0501P	80	33	35	19	25	15	18	15	6	4	16	38	12	05	13	113
C199080.TD1001P	80	33	35	19	25	15	18	15	6	4	16	38	12	10	13	110
C199100.TP0501P	100	42	43,5	24	30	18	24	17	8	6,5	17	48	16	05	16	240
C199100.TD1001P	100	42	43,5	24	30	18	24	17	8	6,5	17	48	16	10	16	237

Attention: bore d1 (H7 tolerance) could be produced by request, with 50 pieces minimum.

Dm = It's possible to increase the hole, by boring, until Dm (enlarge).

A.R. = By request

Presumable presence in the stock in %
90% ● 40% ● 5% ●

C970



SOLID CONTROL HANDWHEEL WITH REVOLVING HANDLE AND LOCKING KNOB

Material:

Reinforced and stabilised polyamide.
Oils and greases resistant.

Surface:

Satin.

Colour:

Black (RAL 9011).

Central Cap:

Grey polyamide (RAL 7035 cod. 13).

Main Insert:

Zinc plated steel insert with smooth through-hole (H10 tolerance).

Side Insert:

Brass right through threaded bush.

Side handle:

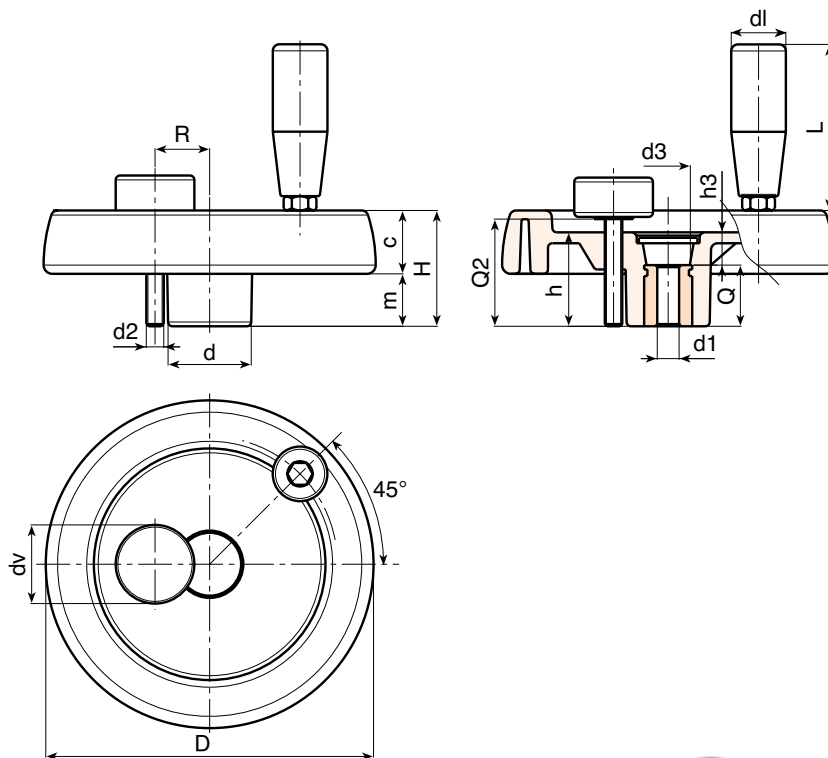
Revolving handle M144 (pag. M-08).

Locking knob:

Cylindrical knob black (Ral 9011) art. G793-36 with threaded stud (page G-12).

Caution: the R e Q2 dimensions of the knob must be chosen by the customer according to the dimensions of the machinery on which it will be installed.

For fixing system, or execution of keyway or square holes, please refer to the technical notes attached to the catalogue.



SPECIAL REQUEST:

- It's possible to supply the inserts with d1 bore by customer design, on request and for quantities.
- It's possible to supply the inserts in different material and treatment-finishes, on request and for quantities.
- Upon request and for a minimum of 50 pieces inserts can be supplied with hole d1 with tolerance H7 and black oxide treated surface. Add letters ZB to the standard code. Example: **C970150.TD0801PZB**.



Art.	D	H	h	d	m	c	d3	h3	R	d2	Q2	dl	L	Dm	d1 ^{H10}	Q	g
● C970100.TP0501P	100	39	34	30	18,5	20,5	16	10	20	M6	A.R.	20	56	16	05	24	252
● C970125.TP0501P	125	44	37	36	20	24	26	13	22÷25	M6	A.R.	21	65	18	05	24	410
● C970150.TD0801P	150	54	44	38	25	29	26	12	25÷28	M8	A.R.	21	65	22	08	32	636
● C970175.TD0801P	173	57	47	40	25,5	31,5	26	15	26÷36	M8	A.R.	23	76	22	08	32	812
● C970200.TD0801P	202	59	49	44	24	35	27	13	28÷42	M8	A.R.	25	86	28	08	36	1040
● C970250.TD0801P	249	68	58	59	29	39	36	22	36÷50	M8	A.R.	25	86	28	08	36	1590

Attention: replace the two places in the code .. with the hole diameter required - 50 pieces minimum.

Dm = It's possible to increase the hole, by boring, until Dm (enlarge). **dv** = 36 mm. **A.R.** = By request

C980



SOLID CONTROL HANDWHEEL WITH REVOLVING/FOLDING HANDLE AND LOCKING KNOB

Material:

Reinforced and stabilised polyamide.
Oils and greases resistant.

Surface:

Satin.

Colour:

Black (RAL 9011).

Central Cap:

Grey polyamide (RAL 7035 cod. 13).

Main Insert:

Zinc plated steel insert with smooth through hole (H10 tolerance).

Side Insert:

Brass right through threaded bush.

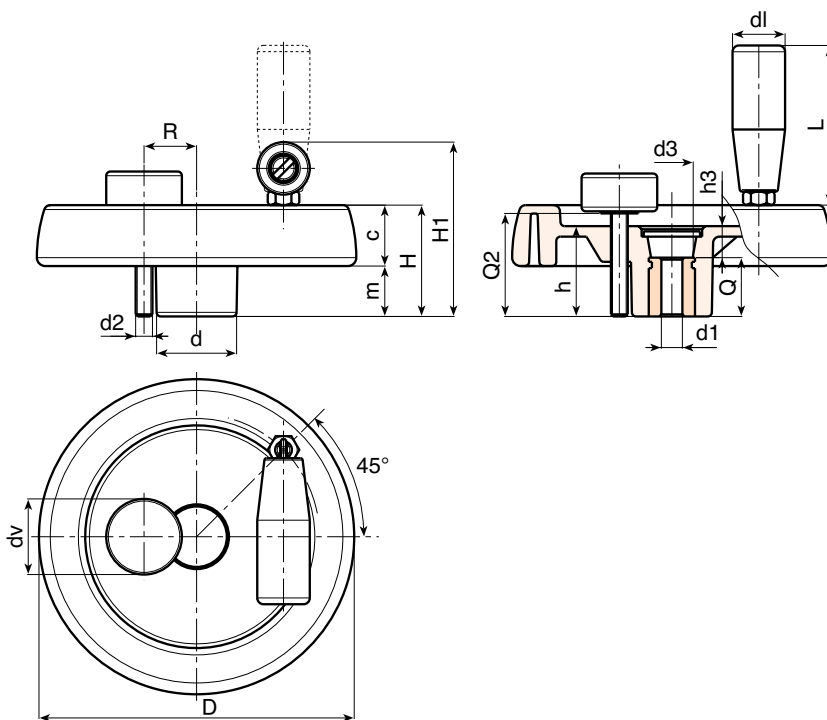
Side handle:

Revolving and folding handle M136 (pag. M-16).

Locking knob:

Cylindrical knob black (Ral 9011) art. G793-36 with threaded stud (page G-12).

Caution: the R e Q2 dimensions of the knob must be chosen by the customer according to the dimensions of the machinery on which it will be installed.



For fixing system, or execution of keyway or square holes, please refer to the technical notes attached to the catalogue.

SPECIAL REQUEST:

- It's possible to supply the inserts with d1 bore by customer design, on request and for quantities.
- It's possible to supply the inserts in different material and treatment-finishes, on request and for quantities.
- Upon request and for a minimum of 50 pieces inserts can be supplied with hole d1 with tolerance H7 and black oxide treated surface. Add letters ZB to the standard code. Example: **C980I50.TD0801PZB**.



Art.	D	H	H1	h	d	m	c	d3	h3	R	d2	Q2	dl	L	Dm	d1 ^{H10}	Q	Δ g
● C980100.TP0501P	100	39	63	34	30	18,5	20,5	16	10	20	M6	A.R.	20	56	16	05	24	295
● C980125.TP0501P	125	44	74	37	36	20	24	26	13	22÷25	M6	A.R.	25	76	18	05	24	420
● C980150.TD0801P	150	54	89	44	38	25	29	26	12	25÷28	M8	A.R.	26	89	22	08	32	730
● C980175.TD0801P	173	57	92	47	40	25,5	31,5	26	15	26÷36	M8	A.R.	26	89	22	08	32	885
● C980200.TD0801P	202	59	94	49	44	24	35	27	13	28÷42	M8	A.R.	26	97	28	08	36	1100
● C980250.TD0801P	249	68	100	58	59	29	39	36	22	36÷50	M8	A.R.	26	97	28	08	36	1640

Attention: bore d1 (H10 tolerance) could be produced by request, with 50 pieces minimum.

Dm = It's possible to increase the hole, by boring, until Dm (enlarge). **dv** = 36 mm. **A.R.** = By request

Presumable presence in the stock in %

C990



SOLID CONTROL HANDWHEEL WITH FOLDAWAY/REVOLVING HANDLE AND LOCKING KNOB

Material:

Reinforced and stabilised polyamide.
Oils and greases resistant.

Surface:

Satin.

Colour:

Black (RAL 9011).

Central Cap:

Grey polyamide (RAL 7035 cod. 13).

Main Insert:

Zinc plated steel insert with smooth through hole (H10 tolerance).

Side Handle:

Flush, foldaway revolving handle, with hexagonal connection. Reinforced polyamide black handle. Black-oxide treated internal mechanism. Fixed with black-oxide treated hexagon socket button head screw ISO 7838

Locking knob:

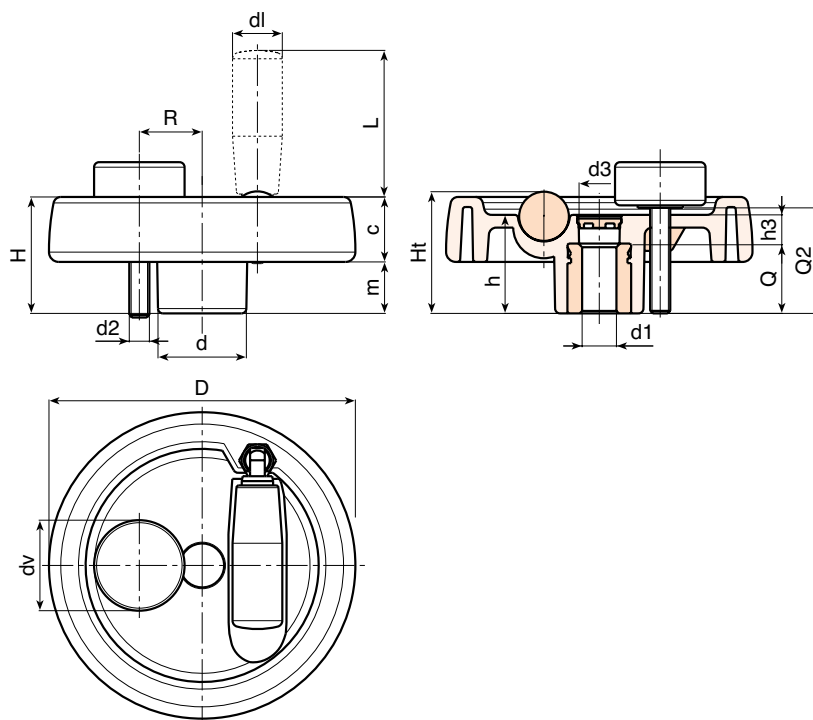
Cylindrical knob black (Ral 9011) art. G793-36 with threaded stud (page G-12).

Caution: the R e Q2 dimensions of the knob must be chosen by the customer according to the dimensions of the machinery on which it will be installed.

For fixing system, or execution of keyway or square holes, please refer to the technical notes attached to the catalogue..

SPECIAL REQUEST:

- It's possible to supply the inserts with d1 bore by customer design, on request and for quantities.
- It's possible to supply the inserts in different material and treatment-finishes, on request and for quantities.
- Upon request and for a minimum of 50 pieces inserts can be supplied with hole d1 with tolerance H7 and black oxide treated surface. Add letters ZB to the standard code. Example: **C9970150.TD0801PZB**.






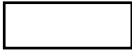







Art.	D	H	Ht	h	d	m	c	d3	h3	R	d2	Q2	dl	L	Dm	d1 ^{H10}	Q	△ g
● C990125.TP0501P	124	48	49,5	40	36	21,5	26,5	16	15	22÷25	M6	A.R.	20	38	18	05	24	410
● C990150.TD0801P	149	53	-	44	38	24,5	28,5	12	26	25÷28	M8	A.R.	20	58	22	08	32	560
● C990175.TD0801P	174	58	-	48	40	24,5	33,5	16	26	26÷36	M8	A.R.	26	80	28	08	32	775
● C990200.TD0801P	198	63	-	53	44	24,5	38,5	17	26	28÷42	M8	A.R.	27	90	28	08	36	1075
● C990250.TD0801P	250	67	-	58	60	29	38	22	36	36÷50	M8	A.R.	27	90	28	08	36	1560

Attention: bore d1 (H10 tolerance) could be produced by request, with 50 pieces minimum.

Dm = It's possible to increase the hole, by boring, until Dm (enlarge). **dv** = 36 mm. **A.R.** = By request

COLOUR CHART

RAL COLOURS CODING

Colour		RAL	Cod.
Black		9011	01
Orange		2004	02
Orange		2011	03
White		9010	04
Blue		5015	07
Yellow		1007	09
Yellow		1021	10
Grey		7024	12
Grey		7035	13
Red		3000	16
Green		6024	17

C

AUTHORISED RESELLER

BOTECO Srl

www.boteco.it

36010 ZANE' (VI) - ITALY

Via L. Pettinà 16 (side street of Via Cuso)

Switchboard Tel.:+39-0445-316411 - Fax:+39-0445-316400

Sales Fax:+39-0445-316401 mail: commerciale@boteco.it

Administration Fax:+39-0445-316402 mail: amministrazione@boteco.it

Technical Fax:+39-0445-316404 mail: tecnico@boteco.it

Certified Mail Box: boteco@pec.botecopec.it

