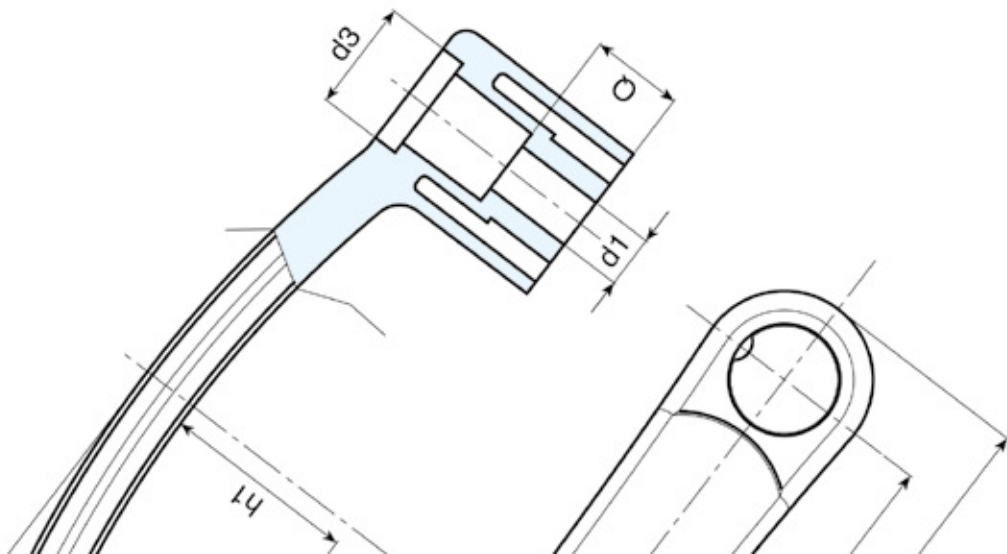




BOTECO®

Family B

BRIDGE HANDLES



B221



FIXED HANDLE WITH NUT

Material:
Reinforced polyamide.
Oils and greases resistant.

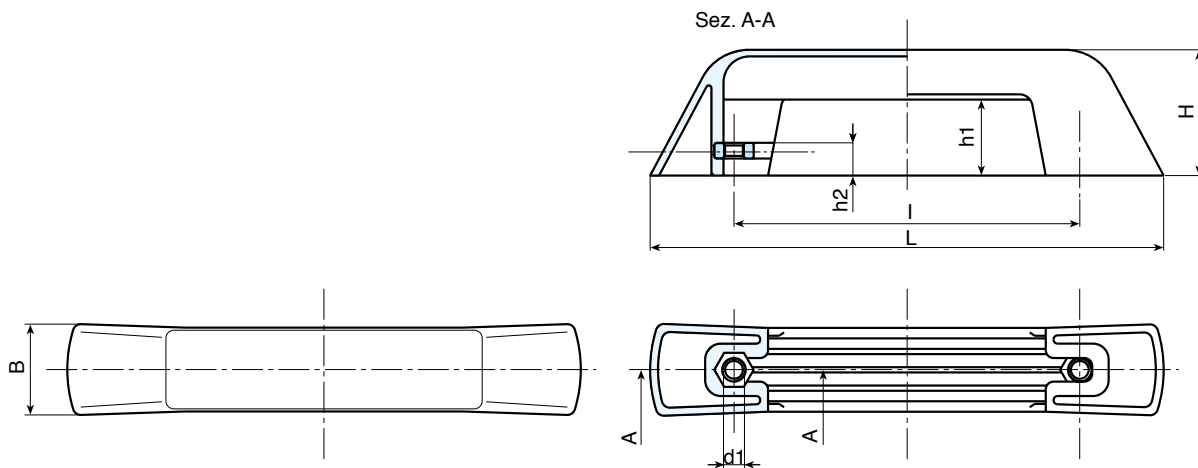
Surface:
Satin.

Colour:
Black (RAL 9011).

Main Insert:
Zinc plated steel nut DIN 934 - UNI 5588.

SPECIAL REQUEST:

- It is possible to supply the inserts in different materials, on request and for quantities.
- It is possible to supply colours as shown in the table at pag. B-37, on request and for quantities.



Art.	L	I	B	H	h1	h2	d1 6H	Δ g	F1 (N)	F2 (N)
B221132.TM0801	198	132	34	48	29	12,5	M08	107	6785	3400

B219



DUROPLAST FIXED BRIDGE HANDLE WITH THREADED BORE INSERT

Material:

Duroplast.
Oils and greases resistant.
High temperatures resistant.

Surface:

Glossy.

Colour:

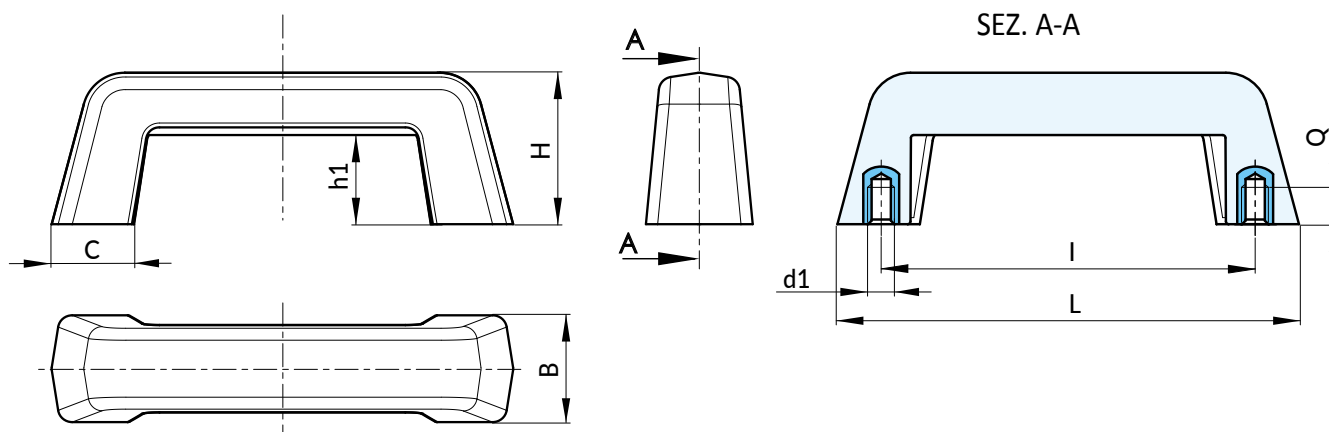
Black (RAL 9011).

Main insert:

Brass blind threaded bore bush, (thread tolerance 6H).

SPECIAL REQUEST:

- None.



ES	Art.	L	I	B	H	h1	C	d1 6H	Q	⚖ g
●	B219110.BM0501	130	110	30	45	27	20	M05	10	89
●	B219110.BM0601	130	110	30	45	27	20	M06	10	90
●	B219132.BM0801	164	132	38	55	34	30	M08	13	170
●	B219132.BM1001	164	132	38	55	34	30	M10	18	172
●	B219150.BM0801	188	150	40	60	43	35	M08	18	204
●	B219150.BM1001	188	150	40	60	43	35	M10	18	206

B222



FIXED BRIDGE HANDLE WITH THREADED HOLE

Material:

Duroplast.
Oils and greases resistant.
High temperatures resistant.

Surface:

Glossy.

Colour:

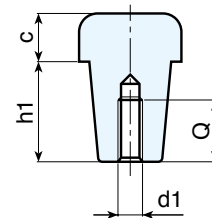
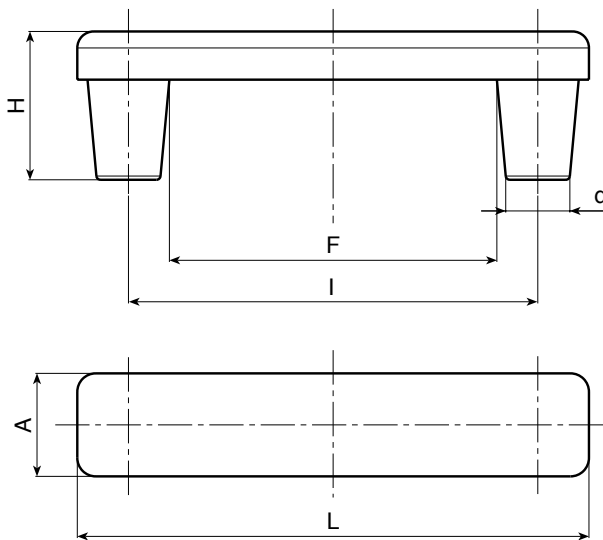
Black (RAL 9011).

Hole:

Female threaded blind hole obtained by moulding the plastic.

SPECIAL REQUEST:

- None.



Art.	L	I	F	A	H	h1	c	d	d1	Q	Δg	F1 (N)	F2 (N)
B222100.BM0601	125	100	80	25	35,5	23,5	12	15,5	M06	15	63	2000	1400

B223



FIXED BRIDGE HANDLE WITH SMOOTH THROUGH HOLE

Material:
Duroplast.
Oils and greases resistant.
High temperatures resistant.

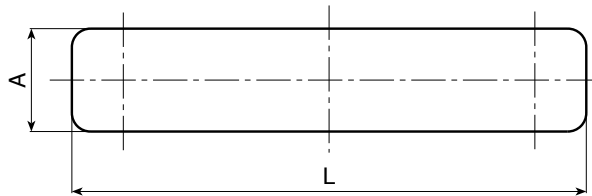
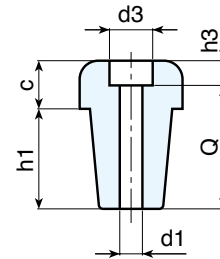
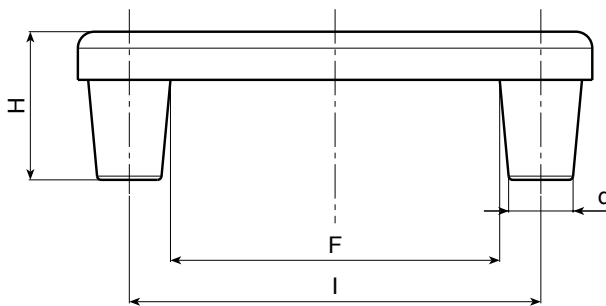
Surface:
Glossy.

Colour:
Black (RAL 9011).

Hole:
Smooth right through hole obtained by moulding the plastic.

SPECIAL REQUEST:

- None.



Art.	L	I	F	A	H	h1	h3	c	d	d3	d1	Q	$\Delta\Delta$ g	F1 (N)	F2 (N)
● B223100.BG0501PP	125	100	80	25	34	23,5	6	10,5	15,5	10,5	5,5	30	55	2000	1400

Presumable presence in the stock in %
 90% ● 40% ● 5% ●

B225



FIXED HANDLE FOR CURVED SURFACES

Material:
Reinforced polyamide.
Oils and greases resistant.

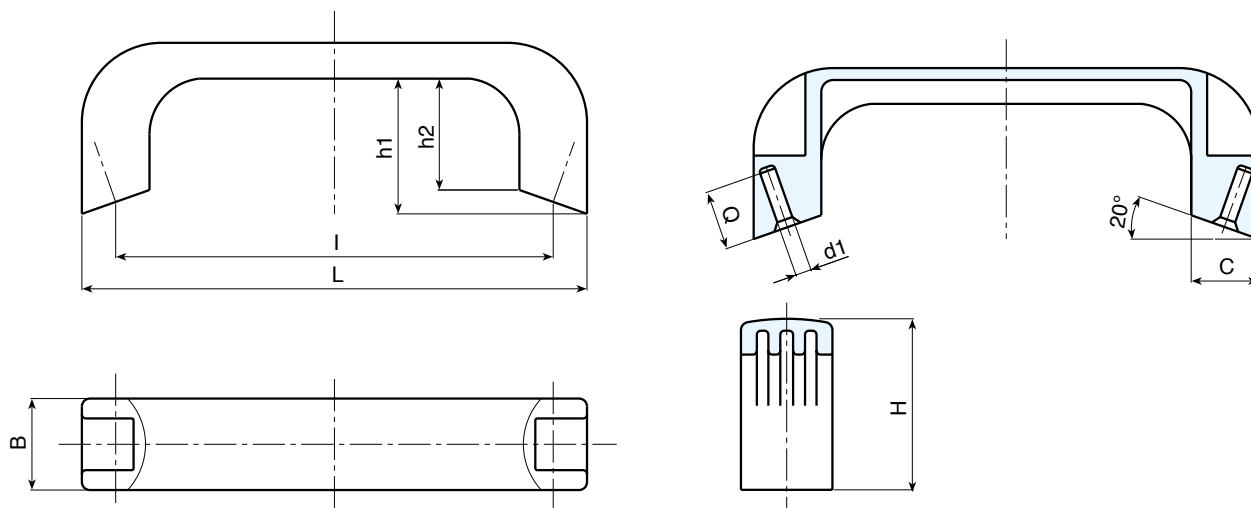
Surface:
Satin.

Colour:
Black (RAL 9011).

Hole:
Smooth right through hole obtained by moulding the plastic for selftapping screw.

SPECIAL REQUEST:

- It is possible to supply colours as shown in the table at pag. B-37, on request and for quantities.



Art.	L	I	B	H	h1	C	d1	Q	g
B225110.TG0401CP	127	110	24	43	34	16	4	16	35

B229



FIXED HANDLE FOR CURVED SURFACES WITH THREADED INSERT

Material:
Reinforced polyamide.
Oils and greases resistant.

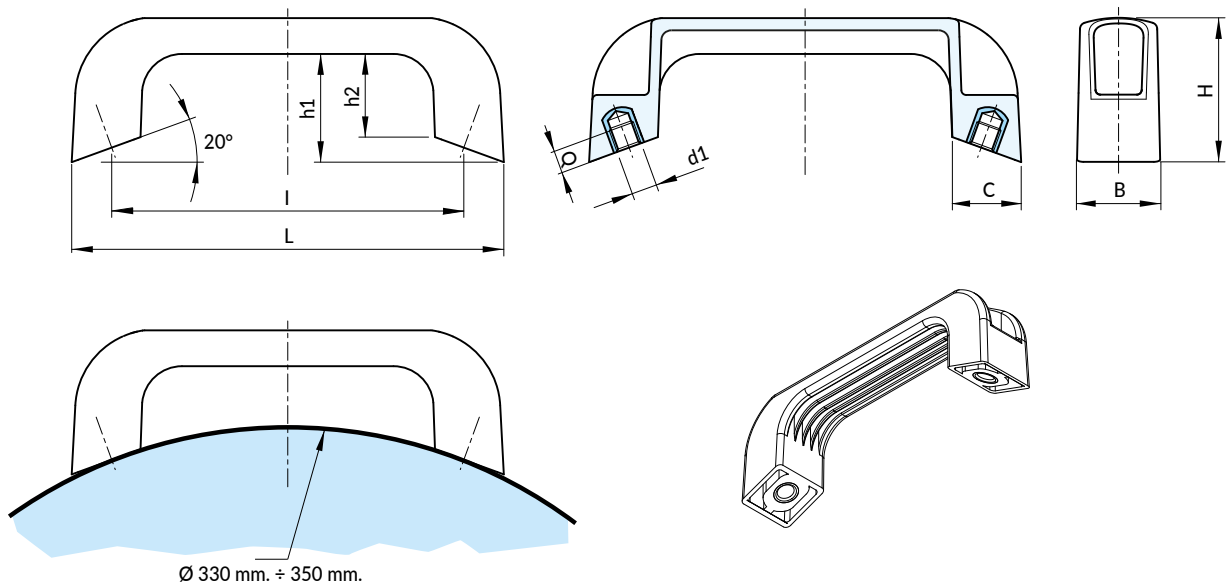
Surface:
Satin.

Colour:
Black (RAL 9011).

Main insert:
Brass blind threaded bore bush,
(thread tolerance 6H).

SPECIAL REQUEST:

- It is possible to supply colours as shown in the table at pag. B-37, on request and for quantities.



Art.	L	l	B	H	h1	h2	C	d1(6H)	Q	Δ g
● B229110.TM0601	135	110	26	45	34	26	21,5	M06	8	55
● B229110.TM0801	135	110	26	45	34	26	21,5	M08	7	54

B227



INCLINED HANDLE

Material:
Reinforced polypropylene.

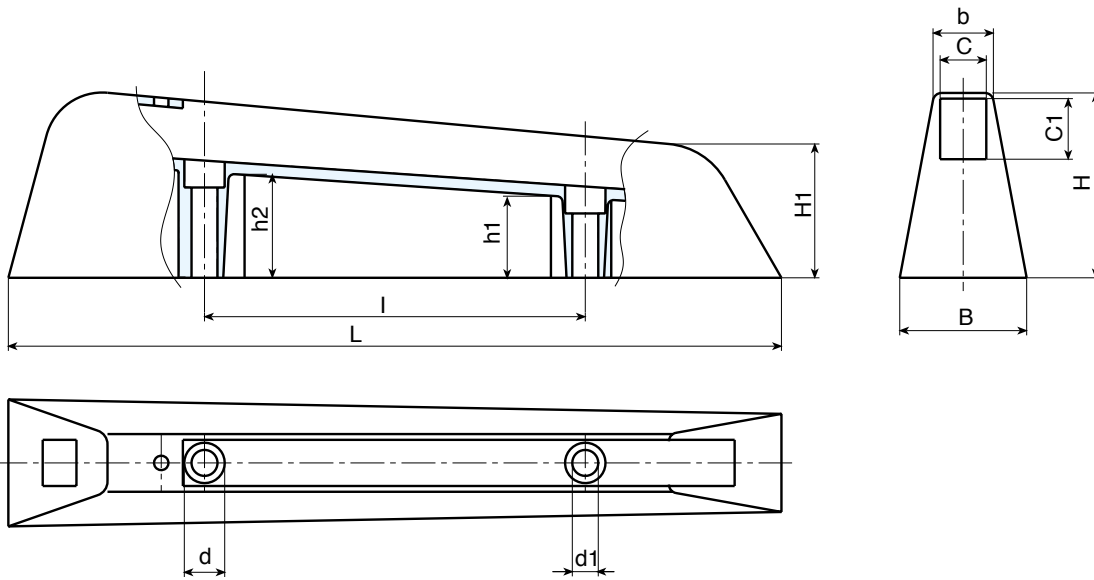
Surface:
Satin.

Colour:
Black (RAL 9011).

Hole:
Smooth right through hole obtained by moulding the plastic.

SPECIAL REQUEST:

- None.



Art.	L	I	B	b	H	H1	h1	h2	C	C1	d	d1	g	F1 (N)
● B227132.TG08.501PP	268	132	44	20	65	46	26	34	15,5	20,5	14	8,5	106	1540

B228



FIXED HANDLE WITH THREADED MALE INSERT

Material:

Reinforced polyamide.
Oils and greases resistant.

Surface:

Satin.

Colour:

Black (RAL 9011).

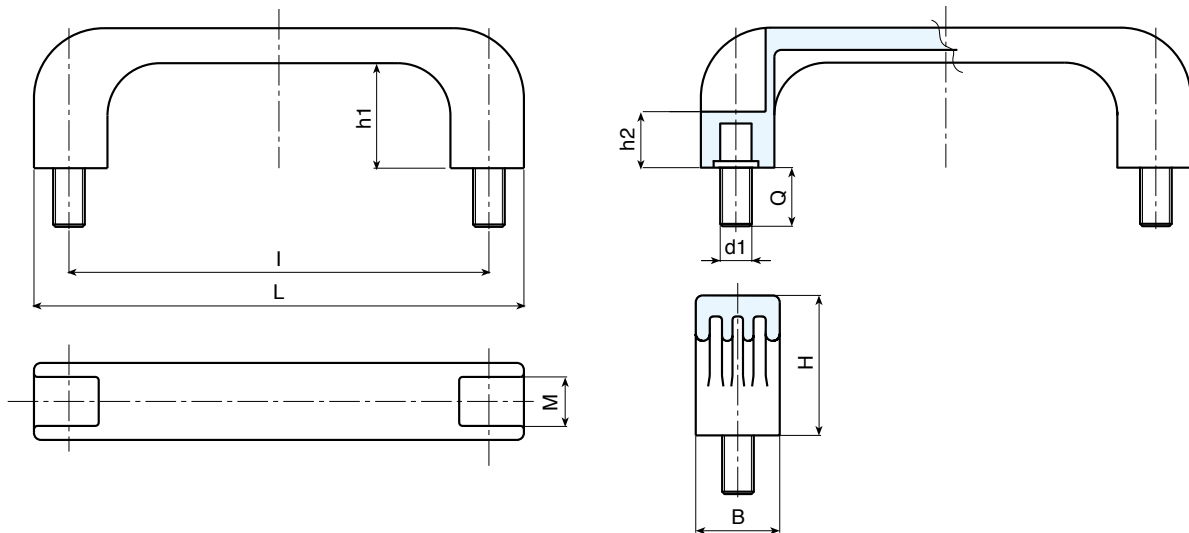
Main Insert:

Zinc plated steel insert with threaded stud.
(tolerance 6g).



SPECIAL REQUEST:

- It is possible to supply the inserts in different materials, on request and for quantities.
- It is possible to supply colours as shown in the table at pag. B-37, on request and for quantities.



	Art.	L	I	B	M	H	h1	h2	Q	d1	g	F1 (N)	F2 (N)
●	B228132.TM06X1601	151	132	26	14	43	31	16	16	M06	85	3000	2200

B224

FIXED HANDLE WITH THROUGH HOLE

Material:
Reinforced polyamide.
Oils and greases resistant.

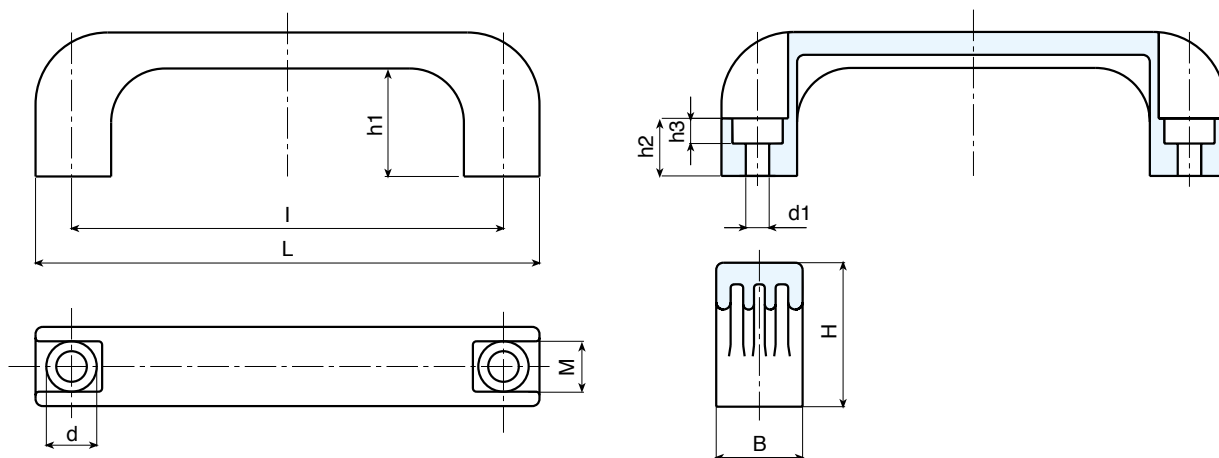
Surface:
Satin.

Colour:
Black (RAL 9011).

Hole:
Smooth right through hole obtained by moulding the plastic.

SPECIAL REQUEST:

- It is possible to supply colours as shown in the table at pag. B-37, on request and for quantities.



B224-01 - Black handle (RAL 9001 code 01)

	Art.	L	l	B	M	H	h1	h2	h3	d	d1	g	F1 (N)	F2 (N)
●	B224094.TG6.501PP	110	94	21	13	37	29	13	7	11	6,5	22	2500	1250
●	B224117.TG6.501PP	140	117	24	13	40	29	15	7	14	6,5	43	4400	3000
●	B224117.TG8.501PP	140	117	24	13	40	29	15	9	14	8,5	39	4400	3000
●	B224120.TG6.501PP	140	120	24	14	40	29	15	7	14	6,5	42	4800	3200
●	B224120.TG8.501PP	140	120	24	14	40	29	15	9	14	8,5	39	4800	3200
●	B224132.TG8.501PP	151	132	26	14	43	31	16	9	14	8,5	63	3400	3200
●	B224180.TG8.501PP	200	180	28	17	51	39	21	9	14	8,5	74	4000	3000
●	B224235.TG10.501PP	262	235	32	20	53	40	21	11	17	10,5	123	3800	3000



B

B224-02 - Orange handle (RAL 2004 code 02)

	Art.	L	I	B	M	H	h1	h2	h3	d	d1	g	F1 (N)	F2 (N)
●	B224094.TG6.502PP	110	94	21	13	37	29	13	7	11	6,5	22	2500	1250
●	B224117.TG6.502PP	140	117	24	13	40	29	15	7	14	6,5	43	4400	3000
●	B224117.TG8.502PP	140	117	24	13	40	29	15	9	14	8,5	39	4400	3000
●	B224120.TG6.502PP	140	120	24	14	40	29	15	7	14	6,5	42	4800	3200
●	B224120.TG8.502PP	140	120	24	14	40	29	15	9	14	8,5	39	4800	3200
●	B224132.TG8.502PP	151	132	26	14	43	31	16	9	14	8,5	63	3400	3200
●	B224180.TG8.502PP	200	180	28	17	51	39	21	9	14	8,5	74	4000	3000
●	B224235.TG10.502PP	262	235	32	20	53	40	21	11	17	10,5	123	3800	3000

B224-16 - Red handle (RAL 3000 code 16)

	Art.	L	I	B	M	H	h1	h2	h3	d	d1	g	F1 (N)	F2 (N)
●	B224094.TG6.516PP	110	94	21	13	37	29	13	7	11	6,5	22	2500	1250
●	B224117.TG6.516PP	140	117	24	13	40	29	15	7	14	6,5	43	4400	3000
●	B224117.TG8.516PP	140	117	24	13	40	29	15	9	14	8,5	39	4400	3000
●	B224120.TG6.516PP	140	120	24	14	40	29	15	7	14	6,5	42	4800	3200
●	B224120.TG8.516PP	140	120	24	14	40	29	15	9	14	8,5	39	4800	3200
●	B224132.TG8.516PP	151	132	26	14	43	31	16	9	14	8,5	63	3400	3200
●	B224180.TG8.516PP	200	180	28	17	51	39	21	9	14	8,5	74	4000	3000
●	B224235.TG10.516PP	262	235	32	20	53	40	21	11	17	10,5	123	3800	3000

B226



FIXED HANDLE WITH THREADED INSERT

Material:
Reinforced polyamide.
Oils and greases resistant.

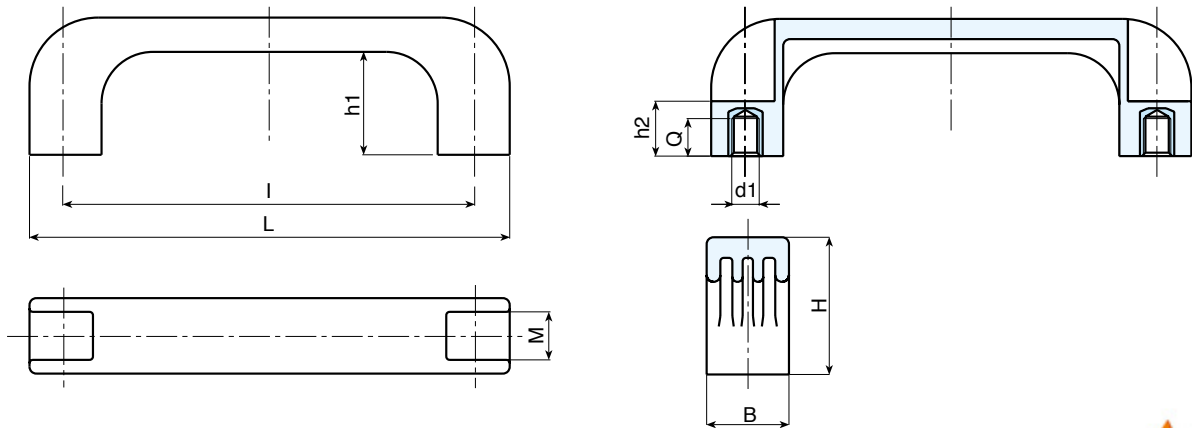
Surface:
Satin.

Colour:
Black (RAL 9011).

Main Insert:
Brass blind threaded bush (tolerance 6H).

SPECIAL REQUEST:

- It is possible to supply the inserts in different materials, on request and for quantities.
- It is possible to supply colours as shown in the table at pag. B-37, on request and for quantities.



Art.	L	I	B	M	H	h1	h2	Q	d1	Δ g	F1 (N)	F2 (N)
B226094.TM0501	110	94	21	13	37	29	13	7	M05	23	4300	1300
B226094.TM0601	110	94	21	13	37	29	13	7	M06	23	4300	1300
B226117.TM0501	140	117	24	13	40	29	15	10	M05	43	4100	2800
B226117.TM0601	140	117	24	13	40	29	15	9	M06	43	4100	2800
B226117.TM0801	140	117	24	13	40	29	15	9	M08	43	4100	2800
B226120.TM0501	140	120	24	14	40	29	15	10	M05	43	6100	2800
B226120.TM0601	140	120	24	14	40	29	15	9	M06	43	6100	2800
B226120.TM0801	140	120	24	14	40	29	15	9	M08	43	6100	2800
B226132.TM0501	151	132	26	14	43	31	16	10	M05	70	7300	3500
B226132.TM0601	151	132	26	14	43	31	16	9	M06	70	7300	3500
B226132.TM0801	151	132	26	14	43	31	16	9	M08	70	3700	2800
B226180.TM0601	200	180	28	17	51	39	21	14	M06	87	3700	2800
B226180.TM0801	200	180	28	17	51	39	21	14	M08	88	3700	2800
B226235.TM0801	262	235	32	20	53	40	21	14	M08	123	4300	3200
B226235.TM1001	262	235	32	20	53	40	21	14	M10	123	4300	3200

B224AE

UL94-V0



SELF-EXTINGUISHING FIXED HANDLE WITH THROUGH-HOLE

Material:
Self-extinguishing reinforced polyamide UL94 V0 with yellow card.
Oils and greases resistant.

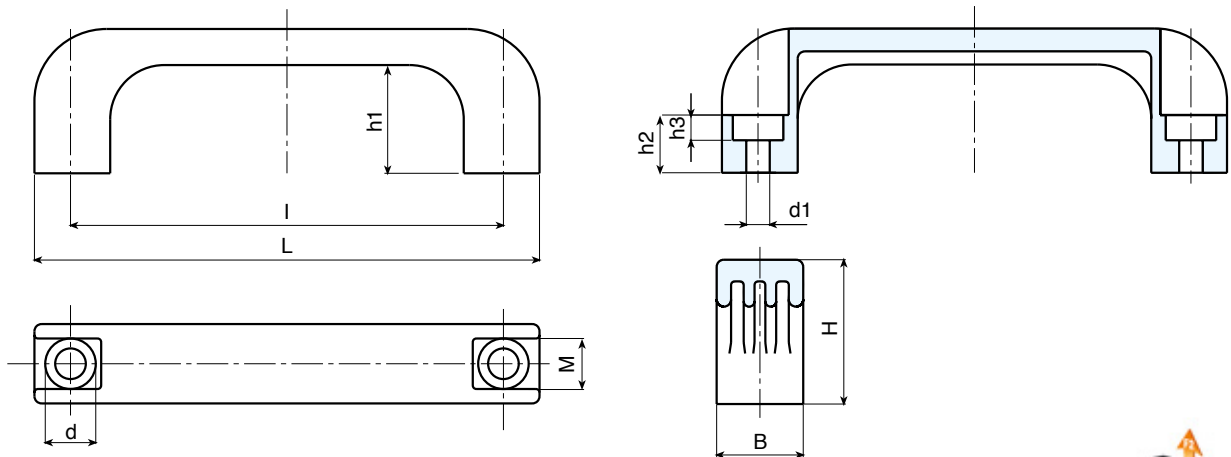
Surface:
Satin.

Colour:
Black (RAL 9011).

Hole:
Smooth right through hole obtained by moulding the plastic.

SPECIAL REQUEST:

- None.



Art.	L	I	B	M	H	h1	h2	h3	d	d1	g	F1 (N)	F2 (N)
● B224094.TG6.501AE	110	94	21	13	37	29	13	7	11	6,5	22	2500	1250
● B224117.TG6.501AE	140	117	24	13	40	29	15	7	14	6,5	43	4400	3000
● B224117.TG8.501AE	140	117	24	13	40	29	15	9	14	8,5	39	4400	3000
● B224120.TG6.501AE	140	120	24	14	40	29	15	7	14	6,5	42	4800	3200
● B224120.TG8.501AE	140	120	24	14	40	29	15	9	14	8,5	39	4800	3200
● B224132.TG8.501AE	151	132	26	14	43	31	16	9	14	8,5	63	3400	3200
● B224180.TG8.501AE	200	180	28	17	51	39	21	9	14	8,5	74	4000	3000
● B224235.TG10.501AE	262	235	32	20	53	40	21	11	17	10,5	123	3800	3000

B226AE

UL94-V0



SELF-EXTINGUISHING SOLID HANDLE WITH THREADED INSERT

Material:
Self-extinguishing reinforced polyamide UL94 V0 with yellow card.
Oils and greases resistant.

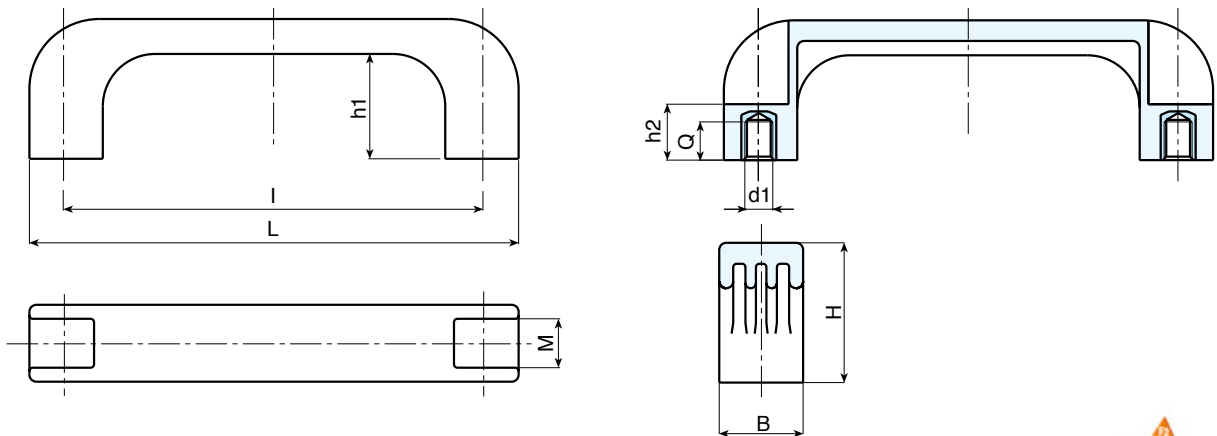
Surface:
Satin.

Colour:
Black (RAL 9011).

Main Insert:
Brass blind threaded bush (tolerance 6H).

SPECIAL REQUEST:

- It is possible to supply the inserts in different materials, on request and for quantities.



Art.	L	I	B	M	H	h1	h2	Q	d1	g	F1 (N)	F2 (N)
● B226094.TM0501AE	110	94	21	13	37	29	13	7	M05	23	4300	1300
● B226094.TM0601AE	110	94	21	13	37	29	13	7	M06	23	4300	1300
● B226117.TM0501AE	140	117	24	13	40	29	15	10	M05	43	4100	2800
● B226117.TM0601AE	140	117	24	13	40	29	15	9	M06	43	4100	2800
● B226117.TM0801AE	140	117	24	13	40	29	15	9	M08	43	4100	2800
● B226120.TM0501AE	140	120	24	14	40	29	15	10	M05	43	6100	2800
● B226120.TM0601AE	140	120	24	14	40	29	15	9	M06	43	6100	2800
● B226120.TM0801AE	140	120	24	14	40	29	15	9	M08	43	6100	2800
● B226132.TM0501AE	151	132	26	14	43	31	16	10	M05	70	7300	3500
● B226132.TM0601AE	151	132	26	14	43	31	16	9	M06	70	7300	3500
● B226132.TM0801AE	151	132	26	14	43	31	16	9	M08	70	3700	2800
● B226180.TM0801AE	200	180	28	17	51	39	21	14	M08	88	3700	2800
● B226235.TM0801AE	262	235	32	20	53	40	21	14	M08	123	4300	3200
● B226235.TM1001AE	262	235	32	20	53	40	21	14	M10	123	4300	3200

B236



SOLID HANDLE WITH THREADED INSERT

Material:
Reinforced polyamide.
Oils and greases resistant.

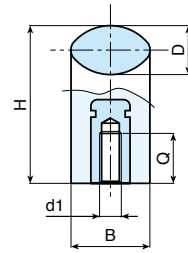
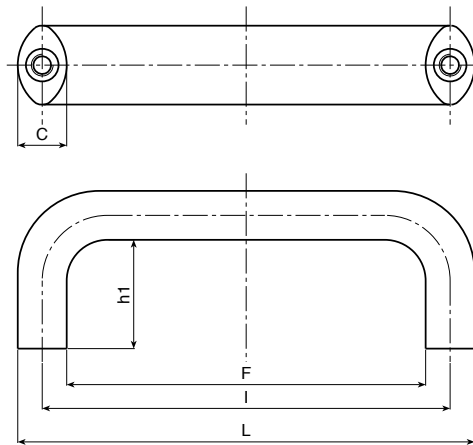
Surface:
Satin.

Colour:
Black (RAL 9011).

Main Insert:
Brass blind threaded bush (tolerance 6H).

SPECIAL REQUEST:

- It is possible to supply the inserts in different materials, on request and for quantities.
- It is possible to supply colours as shown in the table at pag. B-37, on request and for quantities.



	Art.	L	I	F	B	C	D	H	h1	Q	d1	g	F1 (N)	F2 (N)
●	B236086.TM0501	98,5	86	73,5	20	12,5	12,5	40	28	10	M05	40	4000	1500
●	B236086.TM0601	98,5	86	73,5	20	12,5	12,5	40	28	9	M06	40	4000	1500
●	B236094.TM0501	106,5	94	81,5	20	12,5	12,5	40	28	10	M05	40	3300	1600
●	B236094.TM0601	106,5	94	81,5	20	12,5	12,5	40	28	9	M06	40	3300	1600
●	B236117.TM0501	134	117	102	25	16	16	50	34	10	M05	84	4400	1800
●	B236117.TM0601	134	117	102	25	16	16	50	34	9	M06	81	4400	1800
●	B236117.TM0801	134	117	102	25	16	16	50	34	14	M08	80	4400	1800
●	B236120.TM0501	134	120	102	25	16	16	50	34	10	M05	84	5200	2400
●	B236120.TM0601	134	120	102	25	16	16	50	34	9	M06	81	5200	2400
●	B236120.TM0801	134	120	102	25	16	16	50	34	14	M08	80	5200	2400
●	B236132.TM0501	148	132	116	25	16	16	50	34	10	M05	90	3700	2600
●	B236132.TM0601	148	132	116	25	16	16	50	34	9	M06	88	3700	2600
●	B236132.TM0801	148	132	116	25	16	16	50	34	14	M08	85	3700	2600
●	B236150.TM0601	168	150	132	29	18	18	58	40	15	M06	123	5900	1900
●	B236150.TM0801	168	150	132	29	18	18	58	40	14	M08	121	5900	1900
●	B236150.TM1001	168	150	132	29	18	18	58	40	14	M10	119	5900	1900
●	B236179.TM0801	197	179	161	29	18	18	58	40	14	M08	135	3800	3200
●	B236179.TM1001	197	179	161	29	18	18	58	40	14	M10	133	3800	3200

Presumable presence in the stock in %
 90% ● 40% ● 5% ●

B236CIN



SOLID HANDLE WITH THREADED STAINLESS STEEL INSERT

Material:
Reinforced polyamide.
Oils and greases resistant.

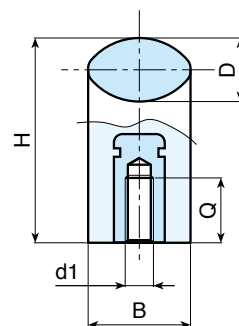
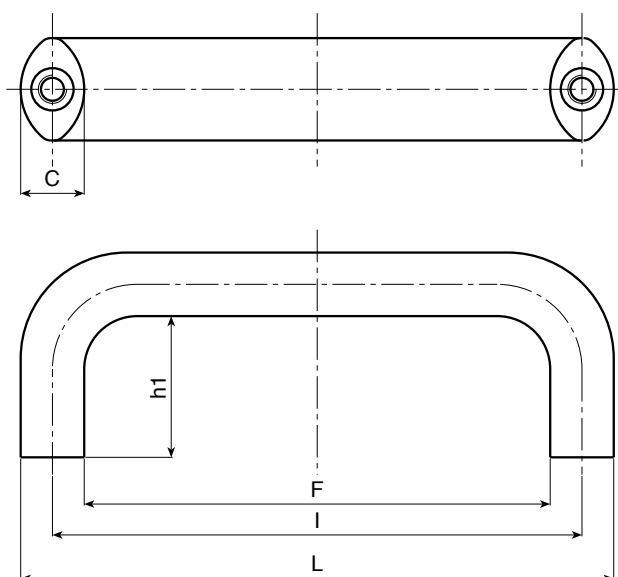
Surface:
Satin.

Colour:
Black (RAL 9011).

Main Insert:
Stainless steel blind threaded bush (AISI 303),
(tolerance 6H).

SPECIAL REQUEST:

- It is possible to supply colours as shown in the table at pag. B-37, on request and for quantities.



	Art.	L	I	F	B	C	D	H	h1	Q	d1	g	F1 (N)	F2 (N)
●	B236086.TM0501CIN	98,5	86	73,5	20	12,5	12,5	40	28	8	M05	40	4000	1500
●	B236086.TM0601CIN	98,5	86	73,5	20	12,5	12,5	40	28	9	M06	40	4000	1500
●	B236094.TM0501CIN	106,5	94	81,5	20	12,5	12,5	40	28	8	M05	40	3300	1600
●	B236094.TM0601CIN	106,5	94	81,5	20	12,5	12,5	40	28	9	M06	40	3300	1600
●	B236117.TM0501CIN	134	117	102	25	16	16	50	34	8	M05	84	4400	1800
●	B236117.TM0601CIN	134	117	102	25	16	16	50	34	9	M06	81	4400	1800
●	B236117.TM0801CIN	134	117	102	25	16	16	50	34	13	M08	80	4400	1800
●	B236120.TM0501CIN	134	120	102	25	16	16	50	34	8	M05	84	5200	2400
●	B236120.TM0601CIN	134	120	102	25	16	16	50	34	9	M06	81	5200	2400
●	B236120.TM0801CIN	134	120	102	25	16	16	50	34	13	M08	80	5200	2400
●	B236132.TM0501CIN	148	132	116	25	16	16	50	34	8	M05	90	3700	2600
●	B236132.TM0601CIN	148	132	116	25	16	16	50	34	9	M06	88	3700	2600
●	B236132.TM0801CIN	148	132	116	25	16	16	50	34	13	M08	85	3700	2600
●	B236150.TM0601CIN	168	150	132	29	18	18	58	40	9	M06	123	5900	1900
●	B236150.TM0801CIN	168	150	132	29	18	18	58	40	13	M08	121	5900	1900
●	B236150.TM1001CIN	168	150	132	29	18	18	58	40	16	M10	119	5900	1900
●	B236179.TM0801CIN	197	179	161	29	18	18	58	40	13	M08	135	3800	3200
●	B236179.TM1001CIN	197	179	161	29	18	18	58	40	16	M10	133	3800	3200

B236AE



SELF-EXTINGUISHING SOLID HANDLE WITH THREADED INSERT

Material:
Self-extinguishing reinforced polyamide UL94 V0 with yellow card.
Oils and greases resistant.

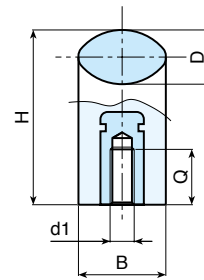
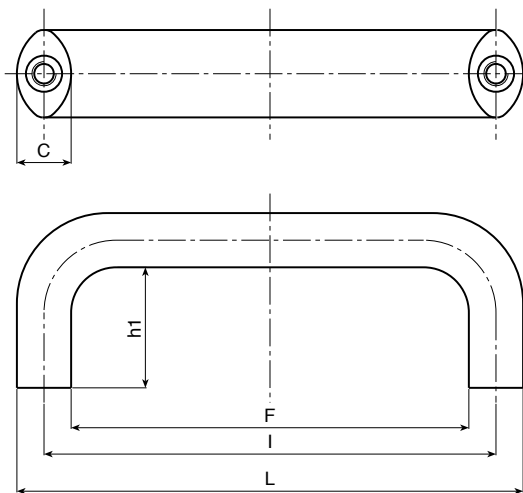
Surfaces:
Satin.

Colour:
Black (RAL 9011).

Main Insert:
Brass blind threaded bush (tolerance 6H).

SPECIAL REQUEST:

- It is possible to supply the inserts in different materials, on request and for quantities.
- It is possible to supply colours as shown in the table at pag. B-37, on request and for quantities.



	Art.	L	I	F	B	C	D	H	h1	Q	d1	g	F1 (N)	F2 (N)
●	B236086.TM0501AE	98,5	86	73,5	20	12,5	12,5	40	28	10	M05	40	4000	1500
●	B236086.TM0601AE	98,5	86	73,5	20	12,5	12,5	40	28	9	M06	40	4000	1500
●	B236094.TM0501AE	106,5	94	81,5	20	12,5	12,5	40	28	10	M05	40	3300	1600
●	B236094.TM0601AE	106,5	94	81,5	20	12,5	12,5	40	28	9	M06	40	3300	1600
●	B236117.TM0501AE	134	117	102	25	16	16	50	34	10	M05	84	4400	1800
●	B236117.TM0601AE	134	117	102	25	16	16	50	34	9	M06	81	4400	1800
●	B236117.TM0801AE	134	117	102	25	16	16	50	34	14	M08	80	4400	1800
●	B236120.TM0501AE	134	120	102	25	16	16	50	34	10	M05	84	5200	2400
●	B236120.TM0601AE	134	120	102	25	16	16	50	34	9	M06	81	5200	2400
●	B236120.TM0801AE	134	120	102	25	16	16	50	34	14	M08	80	5200	2400
●	B236132.TM0501AE	148	132	116	25	16	16	50	34	10	M05	90	3700	2600
●	B236132.TM0601AE	148	132	116	25	16	16	50	34	9	M06	88	3700	2600
●	B236132.TM0801AE	148	132	116	25	16	16	50	34	14	M08	85	3700	2600
●	B236150.TM0601AE	168	150	132	29	18	18	58	40	15	M06	123	5900	1900
●	B236150.TM0801AE	168	150	132	29	18	18	58	40	14	M08	121	5900	1900
●	B236150.TM1001AE	168	150	132	29	18	18	58	40	14	M10	119	5900	1900
●	B236179.TM0801AE	197	179	161	29	18	18	58	40	14	M08	135	3800	3200
●	B236179.TM1001AE	197	179	161	29	18	18	58	40	14	M10	133	3800	3200

Presumable presence in the stock in %
 90% ● 40% ● 5% ●

B324



“EUROMODEL” BRIDGE HANDLE WITH THROUGH HOLE AND CAP

Material:
Reinforced polyamide.
Oils and greases resistant.

Surface:
Satin.

Colour:
Black (RAL 9011).

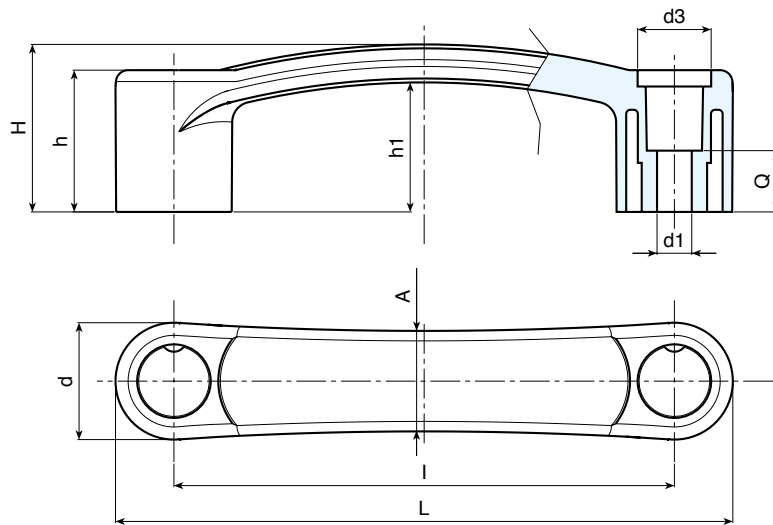
Central Cap:
Grey polyamide (RAL 7035 cod. 13).

Alternative Cap Colour:
Orange (RAL 2004 cod. 02)
Blue (RAL 5015 cod. 07)
Yellow (RAL 1021 cod. 10)
Red (RAL 3000 cod. 16)
Green (RAL 6024 cod. 17)
Black (RAL 9011 cod. 01)

Hole:
Smooth right through hole obtained by moulding the plastic.

SPECIAL REQUEST:

- It is possible to supply colours as shown in the table at pag. B-37, on request and for quantities.



Art.	L	l	H	h	h1	A	d	d3	d1	Q	g	F1 (N)	F2 (N)
● B324094.TG06.501..	118	94	37	33	30	21	24	16	6,5	14	37	2500	2000
● B324117.TG06.501..	145	117	40,5	34	31,5	24	28	18	6,5	15	58	3700	3500
● B324117.TG08.501..	145	117	40,5	34	31,5	24	28	18	8,5	15	57	3700	3500
● B324120.TG06.501..	148	120	40,5	34	31,5	24	28	18	6,5	15	60	2900	3500
● B324120.TG08.501..	148	120	40,5	34	31,5	24	28	18	8,5	15	59	2900	3500
● B324132.TG08.501..	160	132	43	36,5	34	24	28	18	8,5	15	91	3200	3200

Enter the colour code in the two empty spaces .. of the cap code (grey standard)

B326



“EUROMODEL” BRIDGE HANDLE WITH THREADED INSERT AND CAP

Material:
Reinforced polyamide.
Oils and greases resistant.

Surface:
Satin.

Colour:
Black (RAL 9011).

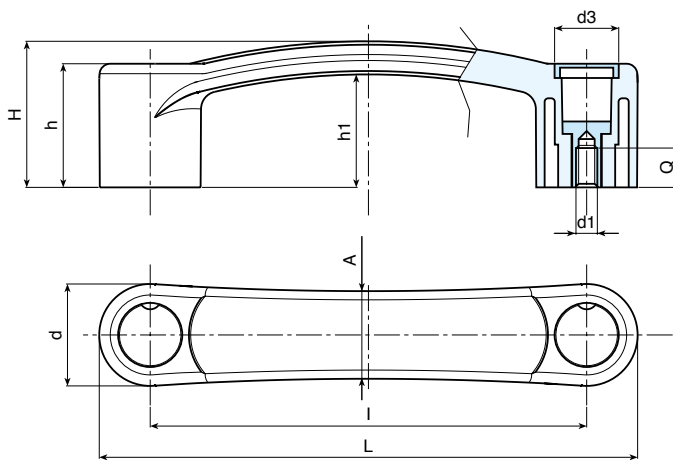
Central Cap:
Grey polyamide (RAL 7035 cod. 13).

Alternative Cap Colour:
Orange (RAL 2004 cod. 02)
Blue (RAL 5015 cod. 07)
Yellow (RAL 1021 cod. 10)
Red (RAL 3000 cod. 16)
Green (RAL 6024 cod. 17)
Black (RAL 9011 cod. 01)

Main Insert:
Brass blind threaded bush (tolerance 6H).

SPECIAL REQUEST:

- It is possible to supply colours as shown in the table at pag. B-37, on request and for quantities.



Art.	L	l	H	h	h1	A	d	d3	d1	Q	Δg	F1 (N)	F2 (N)
B326094.TM0501..	118	94	37	33	30	21	24	16	M05	12	42	2000	2000
B326094.TM0601..	118	94	37	33	30	21	24	16	M06	12	43	2000	2000
B326117.TM0501..	145	117	40,5	34	31,5	24	28	18	M05	12	68	3400	2900
B326117.TM0601..	145	117	40,5	34	31,5	24	28	18	M06	12	67	3400	2900
B326117.TM0801..	145	117	40,5	34	31,5	24	28	18	M08	12	65	3400	2900
B326120.TM0501..	148	120	40,5	34	31,5	24	28	18	M05	12	70	3500	1700
B326120.TM0601..	148	120	40,5	34	31,5	24	28	18	M06	12	69	3500	1700
B326120.TM0801..	148	120	40,5	34	31,5	24	28	18	M08	12	67	3500	1700
B326132.TM0801..	160	132	43	36,5	34	24	28	18	M08	12	77	3500	2900

Enter the colour code in the two empty spaces . . of the cap code (grey standard)

Presumable presence in the stock in %
 90% ● 40% ● 5% ●



B328



CURVED SURFACE ADAPTOR FOR "EUROMODEL" BRIDGE HANDLE WITH THROUGH HOLE

Material:
Reinforced polyamide.
Oils and greases resistant.

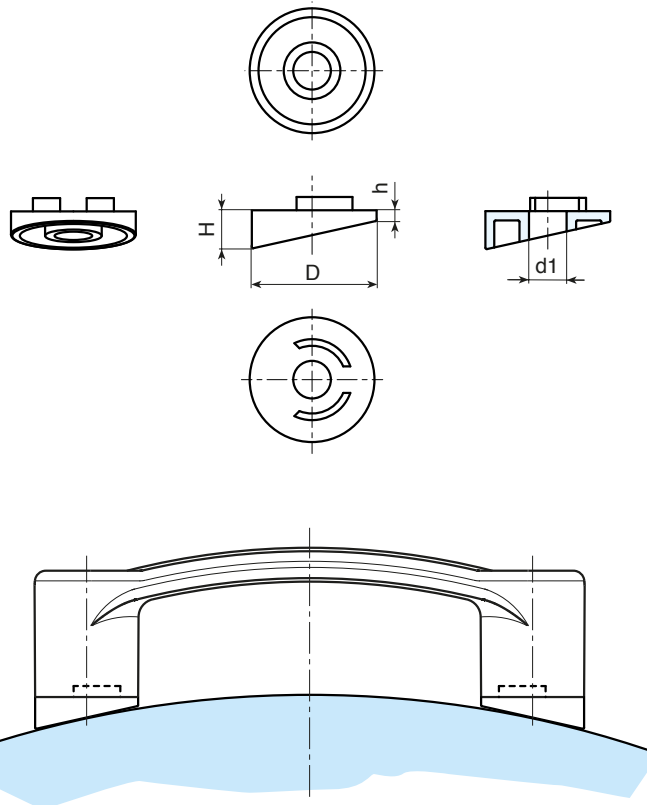
Surface:
Satin.

Colour:
Black (RAL 9011).

Hole:
Smooth right through hole obtained by moulding the plastic.

SPECIAL REQUEST:

- It is possible to supply colours as shown in the table at pag. B-37, on request and for quantities.



Art.	D	H	h	d1	g
B328120.TG08.501	28	8,5	2,4	8,5	3

B230 NEW



“EUROMODEL” SAFETY HANDLE WITH THROUGH HOLE AND COLORED CAP

Material:
Reinforced polyamide. Oils and greases resistant.

Surface:
Satin.

Colour:
Black (RAL 9011).

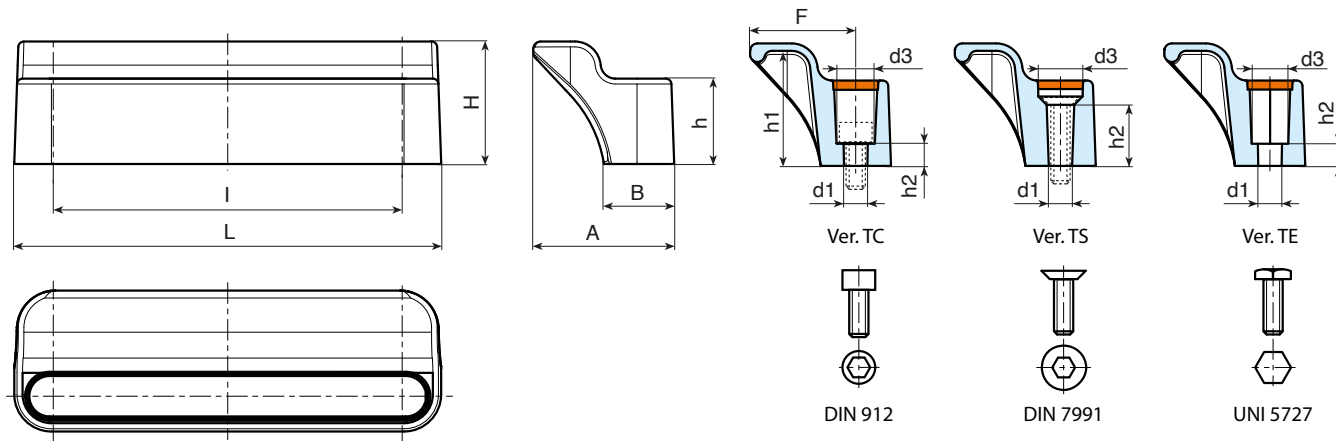
Central cap:
Removable central cap in orange polyamide (RAL 2004 code 02).

Alternative Cap Colour:
 Grey (RAL 7035 cod. 16)
 Blue (RAL 5015 cod. 07)
 Yellow (RAL 1021 cod. 10)
 Red (RAL 3000 cod. 16)
 Green (RAL 6024 cod. 17)
 Black (RAL 9011 cod. 01)

Hole:
Smooth right through hole obtained by moulding the plastic.
Ver. TC: Seat for screw with cylindrical head DIN 912.
Ver. TS: Seat for screw with countersunk head DIN 7991.
Ver. TE: Seat for screw with hexagonal head UNI 5727.

SPECIAL REQUEST:

- It is possible to supply colours as shown in the table at pag. B-37, on request and for quantities.



Ver. TC: Safety handle with seat for cylindrical head screw DIN 912

Art.	L	I	H	F	h	h1	h2	A	B	d3	d1	g
B230094.TG06.50102TC	115	94	33	28,5	23	31	6	38	19	10,3	6,5	54

Ver. TS: Safety handle with seat for countersunk head screw DIN 7991

Art.	L	I	H	F	h	h1	h2	A	B	d3	d1	g
B230094.TG06.50102TS	115	94	33	28,5	23	31	16,3	38	19	11,9	6,5	54

Ver. TE: Safety handle with seat for hexagonal head screw UNI 5727

Art.	L	I	H	F	h	h1	h2	A	B	d3	d1	g
B230094.TG06.50102TE	115	94	33	28,5	23	31	6	38	19	10	6,5	54

Presumable presence in the stock in %
 90% ● 40% ● 5% ●



B321-B331



BRACKET FOR HANDLE WITH TUBE

Material:
Reinforced polyamide.
Oils and greases resistant.

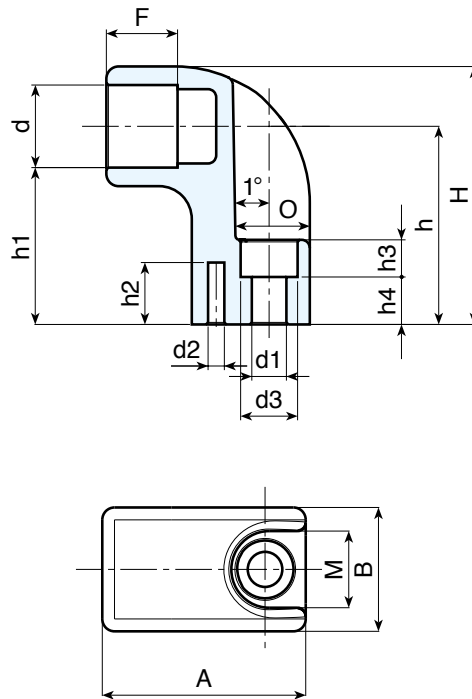
Surface:
Satin.

Colour:
Black (RAL 9011).

Hole:
Smooth right through hole obtained by moulding the plastic.

SPECIAL REQUEST:

- It is possible to provide screw cover plugs on request.
- It is possible to supply colours as shown in the table at pag. B-37, on request and for quantities.



B321 - Bracket for handle with tube D. 20

Art.	d	d1	d3	d2	A	B	H	h	h1	h4	h3	h2	M	O	F	g
B321.TG2001	20	8,5	14,5	4	50	30	57	43	33	7	12,5	15	18,5	18	17	47

B331 - Bracket for handle with tube D. 30

Art.	d	d1	d3	d2	A	B	H	h	h1	h4	h3	h2	M	O	F	g
B331.TG3001	30	10,5	16	4	60	40	77	58	43	12	15	19	23	22	21	92

B320



HANDLE WITH TUBE D. 20

Materials

Plastic End Bracket:

Reinforced polyamide. Oils and greases resistant.

Tube:

Aluminum alloy 6060.

Surfaces:

Plastic End Bracket:

Satin. Colour Black (RAL 9011).

Tube:

Smooth. Silver anodised.

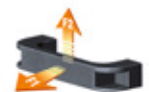
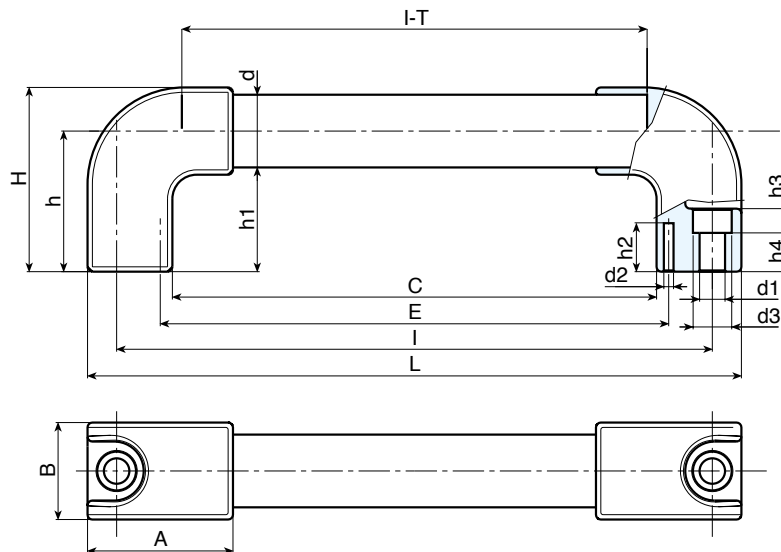
Hole:

Smooth right through hole obtained by moulding the plastic.



SPECIAL REQUEST:

- It is possible to supply the handle with different lengths on request and for quantities.
- It is possible to provide screw cover plugs on request.
- It is possible to supply colours as shown in the table at pag. B-37, on request and for quantities.



	Art.	L	I	C	E	A	B	T	H	h	h1	h4	h3	h2	d	d1	d3	d2	g	F1 (N)	F2 (N)
●	B320200.TG2001	220	200	162	174	50	30	45	57	43	33	7	12,5	15	20	8,5	14,5	4	130	2400	1850
●	B320250.TG2001	270	250	212	224	50	30	45	57	43	33	7	12,5	15	20	8,5	14,5	4	145	1800	1450
●	B320300.TG2001	320	300	262	274	50	30	45	57	43	33	7	12,5	15	20	8,5	14,5	4	155	1500	1500
●	B320350.TG2001	370	350	312	324	50	30	45	57	43	33	7	12,5	15	20	8,5	14,5	4	165	1500	1250
●	B320400.TG2001	420	400	362	374	50	30	45	57	43	33	7	12,5	15	20	8,5	14,5	4	176	1400	850
●	B320500.TG2001	520	500	462	474	50	30	45	57	43	33	7	12,5	15	20	8,5	14,5	4	200	1000	800
●	B320600.TG2001	620	600	562	574	50	30	45	57	43	33	7	12,5	15	20	8,5	14,5	4	225	900	750
●	B320700.TG2001	720	700	662	674	50	30	45	57	43	33	7	12,5	15	20	8,5	14,5	4	250	600	600

B330



HANDLE WITH TUBE D. 30

Materials

Plastic End Bracket:
Reinforced polyamide. Oils and greases resistant.

Tube:
Aluminum alloy 6060.

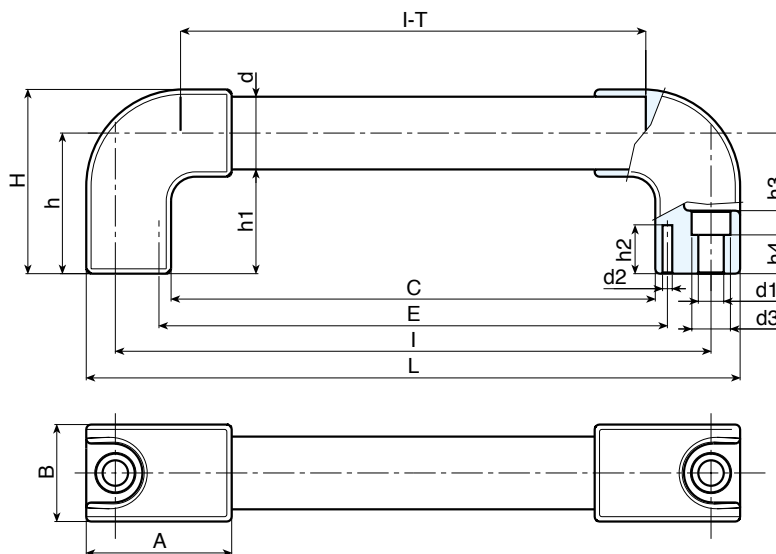
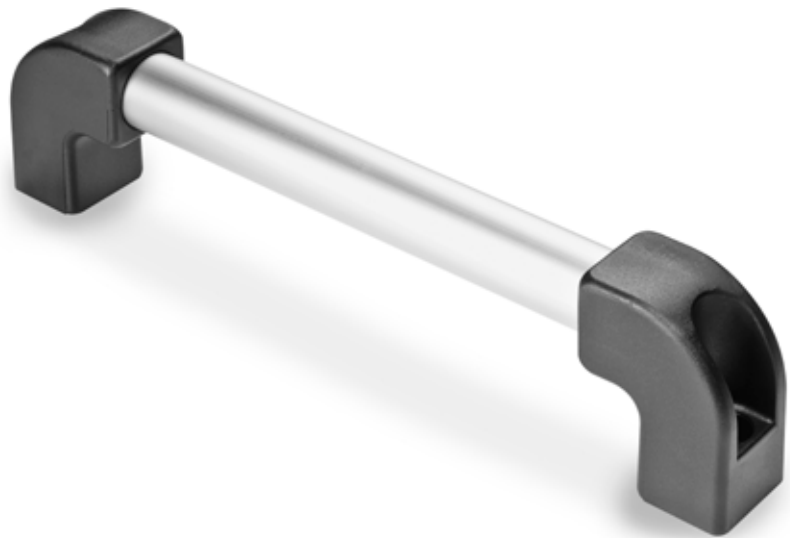
Surfaces:
Plastic End Bracket:
Satin. Colour Black (RAL 9011).

Tube:
Smooth. Silver anodised.

Hole:
Smooth right through hole obtained by moulding the plastic.

SPECIAL REQUEST:

- It is possible to supply the handle with different lengths on request and for quantities.
- It is possible to provide screw cover plugs on request.
- It is possible to supply colours as shown in the table at pag. B-37, on request and for quantities.



Art.	L	I	C	E	A	B	T	H	h	h1	h4	h3	h2	d	d1	d3	d2	g	F1 (N)	F2 (N)
B330200.TG3001	224	200	154	164	60	40	54	77	58	43	12	15	19	30	10,5	16	4	235	3400	2900
B330250.TG3001	274	250	204	214	60	40	54	77	58	43	12	15	19	30	10,5	16	4	250	3800	3200
B330300.TG3001	324	300	254	264	60	40	54	77	58	43	12	15	19	30	10,5	16	4	270	3200	2900
B330350.TG3001	374	350	304	314	60	40	54	77	58	43	12	15	19	30	10,5	16	4	285	2700	2400
B330400.TG3001	424	400	354	364	60	40	54	77	58	43	12	15	19	30	10,5	16	4	305	2400	2200
B330500.TG3001	524	500	454	464	60	40	54	77	58	43	12	15	19	30	10,5	16	4	340	1900	1700
B330600.TG3001	624	600	554	564	60	40	54	77	58	43	12	15	19	30	10,5	16	4	370	1600	1400
B330700.TG3001	724	700	654	664	60	40	54	77	58	43	12	15	19	30	10,5	16	4	405	1400	1250

B322



HANDLE WITH TUBE D. 20 BLACK PAINTED

Materials:

Plastic End Bracket:

Reinforced polyamide. Oils and greases resistant.

Tube:

Aluminum alloy 6060.

Surfaces:

Plastic End Bracket:

Satin. Colour black (RAL 9011).

Tube:

Smooth. Painted with black epoxy powder black (marbled).

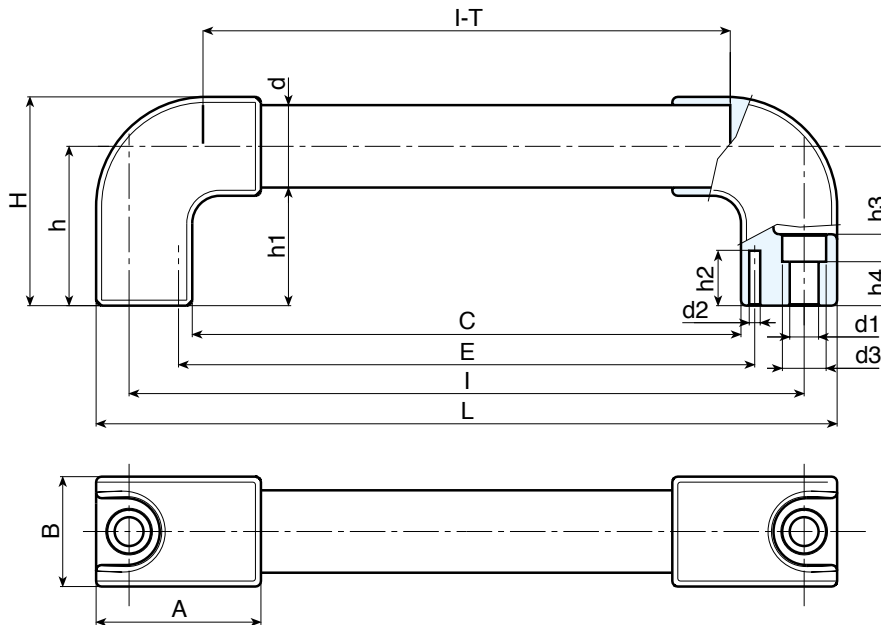
Hole:

Smooth right through hole obtained by moulding the plastic.



SPECIAL REQUEST:

- It is possible to supply the handle with different lengths on request and for quantities.
- It is possible to provide screw cover plugs on request.
- It is possible to supply colours as shown in the table at pag. B-37, on request and for quantities.



	Art.	L	I	C	E	A	B	T	H	h	h1	h4	h3	h2	d	d1	d3	d2	g	F1 (N)	F2 (N)
●	B322200.TG2001	220	200	162	174	50	30	45	57	43	33	7	12,5	15	20	8,5	14,5	4	130	2400	1850
●	B322250.TG2001	270	250	212	224	50	30	45	57	43	33	7	12,5	15	20	8,5	14,5	4	145	1800	1450
●	B322300.TG2001	320	300	262	274	50	30	45	57	43	33	7	12,5	15	20	8,5	14,5	4	155	1500	1500
●	B322350.TG2001	370	350	312	324	50	30	45	57	43	33	7	12,5	15	20	8,5	14,5	4	165	1500	1250
●	B320400.TG2001	420	400	362	374	50	30	45	57	43	33	7	12,5	15	20	8,5	14,5	4	176	1400	850
●	B322500.TG2001	520	500	462	474	50	30	45	57	43	33	7	12,5	15	20	8,5	14,5	4	200	1000	800
●	B322600.TG2001	620	600	562	574	50	30	45	57	43	33	7	12,5	15	20	8,5	14,5	4	225	900	750
●	B322700.TG2001	720	700	662	674	50	30	45	57	43	33	7	12,5	15	20	8,5	14,5	4	250	600	600

B332



HANDLE WITH TUBE D. 30 BLACK PAINTED

Materials:

Plastic End Bracket:

Reinforced polyamide. Oils and greases resistant.

Tube:

Aluminum alloy 6060.

Surfaces:

Plastic End Bracket:

Satin. Colour black (RAL 9011).

Tube:

Smooth. Painted with black epoxy powder black (marbled).

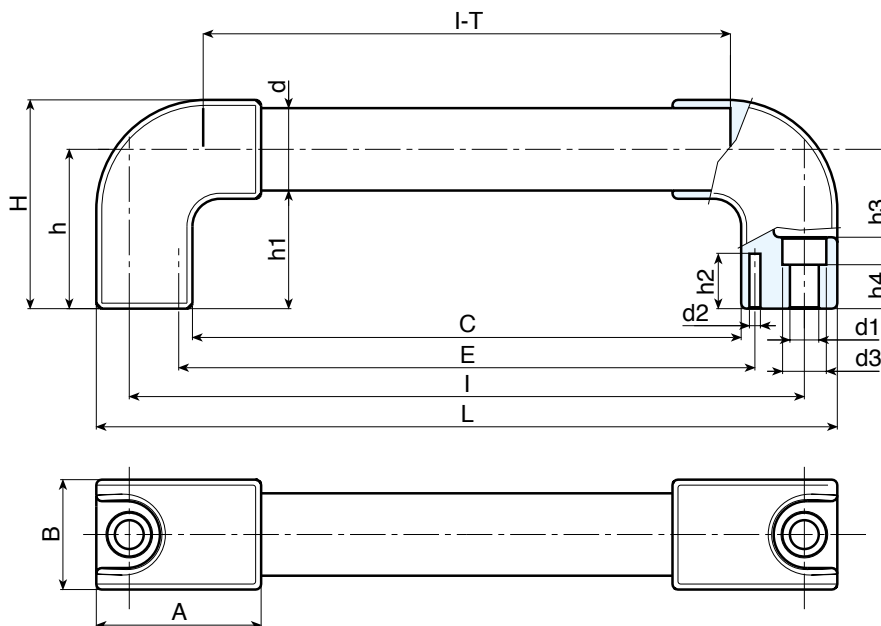
Hole:

Smooth right through hole obtained by moulding the plastic.



SPECIAL REQUEST:

- It is possible to supply the handle with different lengths on request and for quantities.
- It is possible to provide screw cover plugs on request.
- It is possible to supply colours as shown in the table at pag. B-37, on request and for quantities.



	Art.	L	I	C	E	A	B	T	H	h	h1	h4	h3	h2	d	d1	d3	d2	g	F1 (N)	F2 (N)
●	B332200.TG3001	224	200	154	164	60	40	54	77	58	43	12	15	19	30	10,5	16	4	235	3400	2900
●	B332250.TG3001	274	250	204	214	60	40	54	77	58	43	12	15	19	30	10,5	16	4	250	3800	3200
●	B332300.TG3001	324	300	254	264	60	40	54	77	58	43	12	15	19	30	10,5	16	4	270	3200	2900
●	B332350.TG3001	374	350	304	314	60	40	54	77	58	43	12	15	19	30	10,5	16	4	285	2700	2400
●	B332400.TG3001	424	400	354	364	60	40	54	77	58	43	12	15	19	30	10,5	16	4	305	2400	2200
●	B332500.TG3001	524	500	454	464	60	40	54	77	58	43	12	15	19	30	10,5	16	4	340	1900	1700
●	B332600.TG3001	624	600	554	564	60	40	54	77	58	43	12	15	19	30	10,5	16	4	370	1600	1400
●	B332700.TG3001	724	700	654	664	60	40	54	77	58	43	12	15	19	30	10,5	16	4	405	1400	1250

B330CIN



INOX

HANDLE WITH STAINLESS STEEL TUBE D. 30

Materials:

Plastic End Bracket:

Reinforced polyamide. Oils and greases resistant.

Tube:

Stainless steel AISI 304.

Surfaces:

Plastic End Bracket:

Satin. Colour black (RAL 9011).

Tube:

Glossy natural steel.

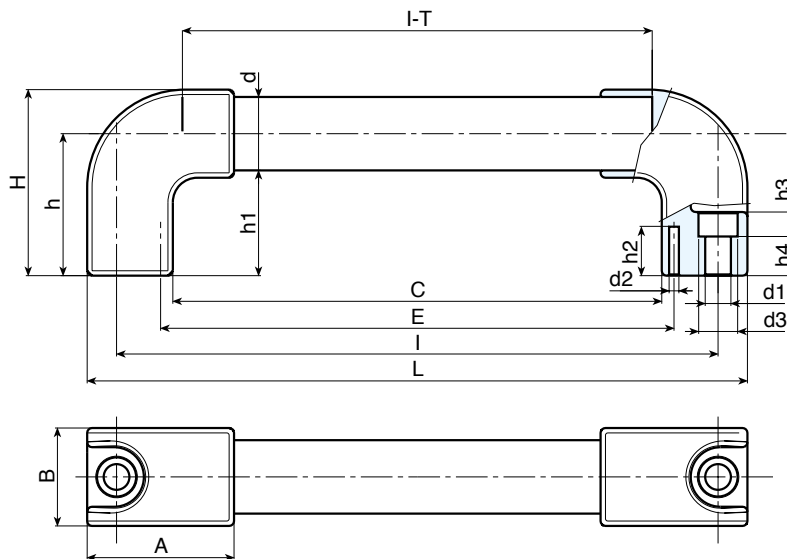
Hole:

Smooth right through hole obtained by moulding the plastic.



SPECIAL REQUEST:

- It is possible to supply the handle with different lengths on request and for quantities.
- It is possible to provide screw cover plugs on request.
- It is possible to supply colours as shown in the table at pag. B-37, on request and for quantities.



Art.	L	I	C	E	A	B	T	H	h	h1	h4	h3	h2	d	d1	d3	d2	g	F1 (N)	F2 (N)
● B330200.TG3001CIN	224	200	154	164	60	40	54	77	58	43	16	11	19	30	10,5	16	4	235	3400	2900
● B330250.TG3001CIN	274	250	204	214	60	40	54	77	58	43	16	11	19	30	10,5	16	4	250	3800	3200
● B330300.TG3001CIN	324	300	254	264	60	40	54	77	58	43	16	11	19	30	10,5	16	4	270	3200	2900
● B330350.TG3001CIN	374	350	304	314	60	40	54	77	58	43	16	11	19	30	10,5	16	4	285	2700	2400
● B330400.TG3001CIN	424	400	354	364	60	40	54	77	58	43	16	11	19	30	10,5	16	4	305	2400	2200
● B330500.TG3001CIN	524	500	454	464	60	40	54	77	58	43	16	11	19	30	10,5	16	4	340	1900	1700
● B330600.TG3001CIN	624	600	554	564	60	40	54	77	58	43	16	11	19	30	10,5	16	4	370	1600	1400
● B330700.TG3001CIN	724	700	654	664	60	40	54	77	58	43	16	11	19	30	10,5	16	4	405	1400	1250

Presumable presence in the stock in %
90% ● **40%** ● **5%** ●

B350CIN



INOX

HANDLE WITH STAINLESS STEEL TUBE D. 30 WITH VERTICAL ENDS

Materials:

- (1) Reinforced polyamide for support for tube. Oils and greases resistant.
- (2) Tube on stainless steel AISI 304.
- (3) Turned round aluminium insert with threaded hole M08 for fastening TCCE screw.
- (4) Stainless steel screw TCCE M08x70 AISI 304 (DIN 912).
- (5) Winged snap-fit LDPE cap.

Surfaces:

- (1-5) Satin.
- (2) Glossy natural

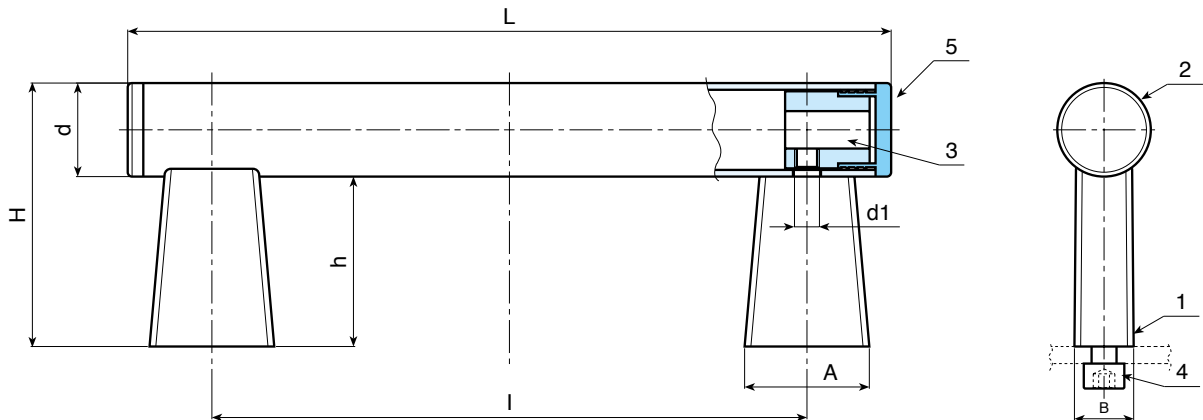
Colours:

- (1-5) Black (RAL 9011).
- (2) Natural steel.

NOTE: The handle is supplied unassembled in single packs.

SPECIAL REQUEST:

- None.



Art.	l	L	D	H	h	A	B	d1	g
B350150.TG3001CIN	150	206	30	85	55	40	19	M08	395
B350200.TG3001CIN	200	256	30	85	55	40	19	M08	447
B350250.TG3001CIN	250	306	30	85	55	40	19	M08	500
B350300.TG3001CIN	300	356	30	85	55	40	19	M08	550
B350350.TG3001CIN	350	406	30	85	55	40	19	M08	602
B350400.TG3001CIN	400	456	30	85	55	40	19	M08	654
B350500.TG3001CIN	500	556	30	85	55	40	19	M08	756
B350600.TG3001CIN	600	656	30	85	55	40	19	M08	862
B350700.TG3001CIN	700	756	30	85	55	40	19	M08	966

B350



HANDLE WITH SILVER TUBE D. 30 SILVER WITH VERTICAL ENDS

Materials:

- (1) Reinforced polyamide for support for tube. Oils and greases resistant.
- (2) Anodised aluminium alloy 6060 tube.
- (3) Turned round aluminium insert with threaded hole M08 for fastening TCCE screw.
- (4) Black oxide threaded screw TCCE M08x70 (DIN 912).
- (5) Winged snap-fit LDPE tube cap.

Surfaces:

- (1-5) Satin.
- (2) Shiny anodised.

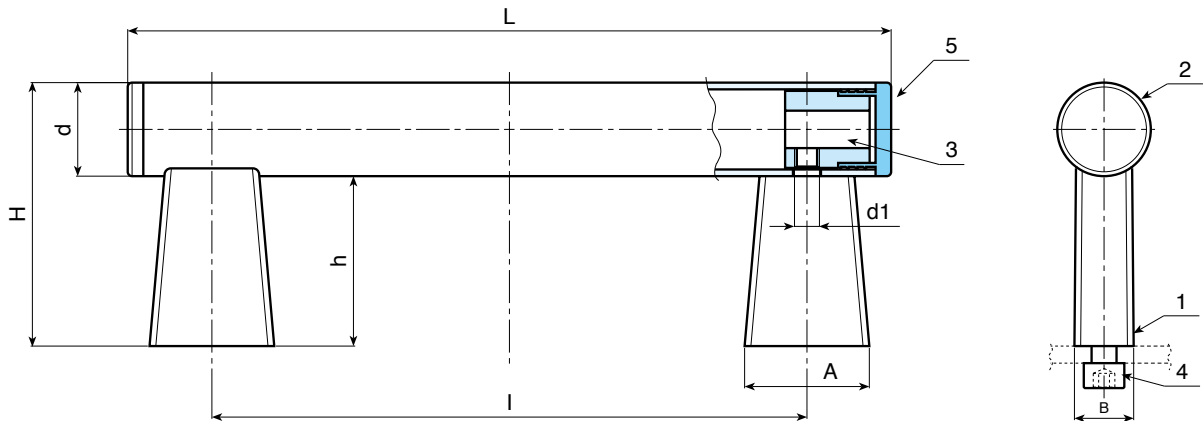
Colours:

- (1-5) Black (RAL 9011).
- (2) Silver anodised.

NOTE: The handle is supplied unassembled in single packs.

SPECIAL REQUEST:

- None.



Art.	l	L	D	H	h	A	B	d1	g
B350150.TG300199	150	206	30	85	55	40	19	M08	270
B350200.TG300199	200	256	30	85	55	40	19	M08	290
B350250.TG300199	250	306	30	85	55	40	19	M08	309
B350300.TG300199	300	356	30	85	55	40	19	M08	327
B350350.TG300199	350	406	30	85	55	40	19	M08	345
B350400.TG300199	400	456	30	85	55	40	19	M08	363
B350500.TG300199	500	556	30	85	55	40	19	M08	400
B350600.TG300199	600	656	30	85	55	40	19	M08	436
B350700.TG300199	700	756	30	85	55	40	19	M08	473

B351



HANDLE WITH BLACK TUBE D. 30 BLACK WITH VERTICAL ENDS

Materials:

- (1) Reinforced polyamide for support for tube. Oils and greases resistant.
- (2) Anodised aluminium alloy 6060 tube.
- (3) Turned round aluminium insert with threaded hole M08 for fastening TCCE screw.
- (4) Black oxide threaded screw TCCE M08x70 (DIN 912).
- (5) Winged snap-fit LDPE tube cap.

Surfaces:

- (1-5) Satin.
- (2) Shiny anodised.

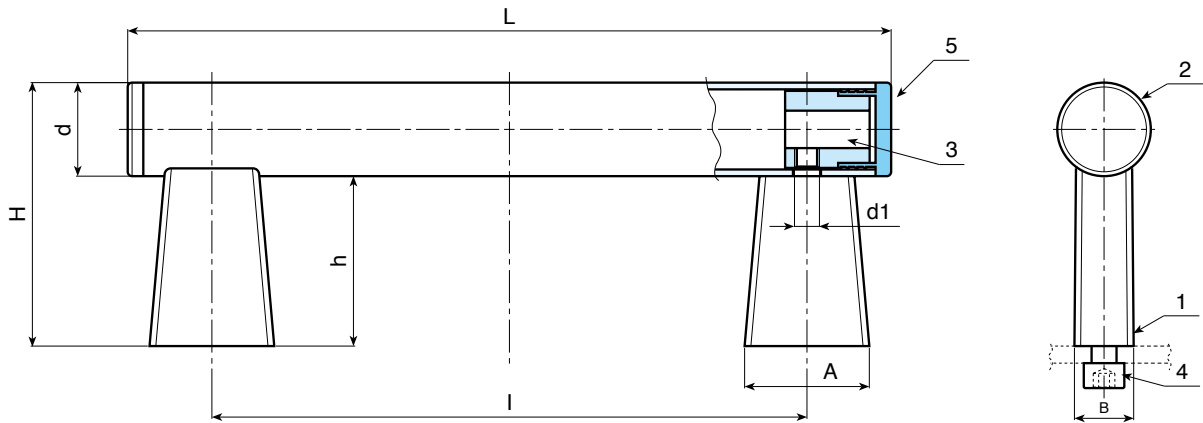
Colours:

- (1-5) Black (RAL 9011).
- (2) Painted with black epoxy powder black (marbled).

NOTE: The handle is supplied unassembled in single packs.

SPECIAL REQUEST:

- None.



Art.	l	L	D	H	h	A	B	d1	g
B351150.TG300198	150	206	30	85	55	40	19	M08	270
B351200.TG300198	200	256	30	85	55	40	19	M08	290
B351250.TG300198	250	306	30	85	55	40	19	M08	309
B351300.TG300198	300	356	30	85	55	40	19	M08	327
B351350.TG300198	350	406	30	85	55	40	19	M08	345
B351400.TG300198	400	456	30	85	55	40	19	M08	363
B351500.TG300198	500	556	30	85	55	40	19	M08	400
B351600.TG300198	600	656	30	85	55	40	19	M08	436
B351700.TG300198	700	756	30	85	55	40	19	M08	473

B340



HANDLE WITH CURVED LATERAL ALUMINUM TUBE D. 20

Materials:

(1) Plastic End Bracket:

Reinforced polyamide. Oils and greases resistant.

(2) Tube:

Aluminum alloy 6060.

Surfaces:

(1) Plastic End Bracket:

Satin. Colour black (RAL 9011).

(2) Tube:

Painted with epoxy powder.

Silver colour code 97 (RAL9007).

Marbled black code 98.

Hole:

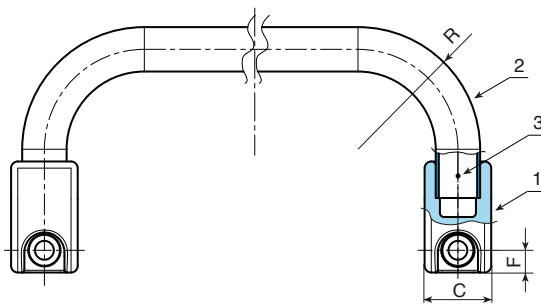
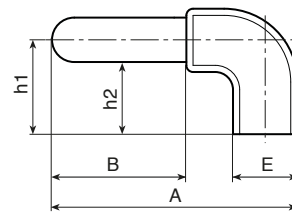
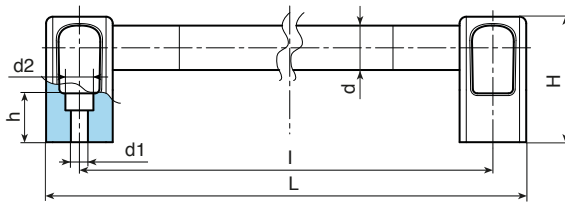
Smooth right through hole obtained by moulding the plastic.

Fixing:

The pipe is fixed to the plastic end bracket by an armonic steel elastic pin (3) Ø 6X27, positioned on the bottom side of the end bracket.

SPECIAL REQUEST:

- It is possible to supply the handle with different lengths on request and for quantities.
- It is possible to provide screw cover plugs on request.
- It is possible to supply colours as shown in the table at pag. B-37, on request and for quantities.



B340: Black marbled painted version code 98

Art.	l	L	d	d2	A	B	C	E	F	H	h	h1	h2	R	d1	g
B340200.TG200198	200	230	20	14,5	110,5	60,5	30	29	10	57	19,5	42,5	32,5	55	8,5	158
B340300.TG200198	300	330	20	14,5	110,5	60,5	30	29	10	57	19,5	42,5	32,5	55	8,5	183
B340500.TG200198	500	530	20	14,5	110,5	60,5	30	29	10	57	19,5	42,5	32,5	55	8,5	226

B340: Silver 9007 painted version code 97

Art.	l	L	d	d2	A	B	C	E	F	H	h	h1	h2	R	d1	g
B340200.TG200197	200	230	20	14,5	110,5	60,5	30	29	10	57	19,5	42,5	32,5	55	8,5	158
B340300.TG200197	300	330	20	14,5	110,5	60,5	30	29	10	57	19,5	42,5	32,5	55	8,5	183
B340500.TG200197	500	530	20	14,5	110,5	60,5	30	29	10	57	19,5	42,5	32,5	55	8,5	226

B400



ALUMINUM SOLID OVAL BRIDGE HANDLE

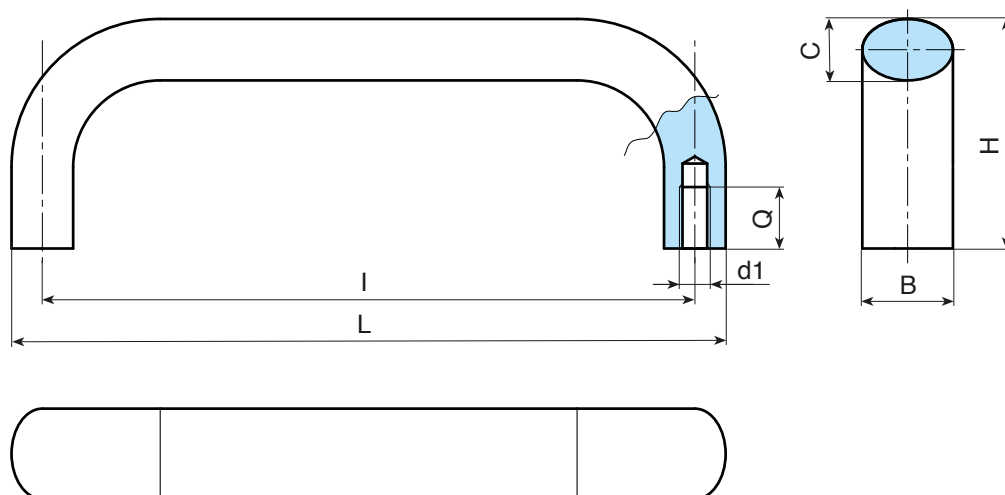
Material:
Bridge handle on aluminum alloy 6060.

Surface:
Satin.

Colours:
cod. 01: Black , painted with epoxy powder.
cod. 99: Natural silver anodised.

SPECIAL REQUEST:

- None.



B400 - Version black painted - cod. 01

Art.	I	L	H	B	C	d1	Q	g	F1	F2
B400100.A20M0601	100	113	50	20	13	M06	12	89	1000	1000
B400120.A20M0601	120	133	50	20	13	M06	12	98	1000	1000
B400128.A20M0601	128	141	50	20	13	M06	12	105	1000	1000
B400160.A20M0601	160	173	50	20	13	M06	12	122	1000	1000
B400112.A26M0801	112	129	55	26	17	M08	14	167	1000	1000
B400120.A26M0801	120	137	55	26	17	M08	14	174	1000	1000
B400128.A26M0801	128	145	55	26	17	M08	14	182	1000	1000
B400160.A26M0801	160	177	55	26	17	M08	14	208	1000	1000
B400180.A26M0801	180	197	55	26	17	M08	14	232	1000	1000
B400192.A26M0801	192	209	55	26	17	M08	14	243	1000	1000

B400 - Version natural silver anodised - cod. 99

Art.	I	L	H	B	C	d1	Q	g	F1	F2
B400100.A20M0699	100	113	50	20	13	M06	12	89	1000	1000
B400120.A20M0699	120	133	50	20	13	M06	12	98	1000	1000
B400128.A20M0699	128	141	50	20	13	M06	12	105	1000	1000
B400160.A20M0699	160	173	50	20	13	M06	12	122	1000	1000
B400112.A26M0899	112	129	55	26	17	M08	14	167	1000	1000
B400120.A26M0899	120	137	55	26	17	M08	14	174	1000	1000
B400128.A26M0899	128	145	55	26	17	M08	14	182	1000	1000
B400160.A26M0899	160	177	55	26	17	M08	14	208	1000	1000
B400180.A26M0899	180	197	55	26	17	M08	14	232	1000	1000
B400192.A26M0899	192	209	55	26	17	M08	14	243	1000	1000

B405



ALUMINUM SOLID FLAT BRIDGE HANDLE

Material:

Bridge handle on aluminum alloy 6060.

Surface:

Satin.

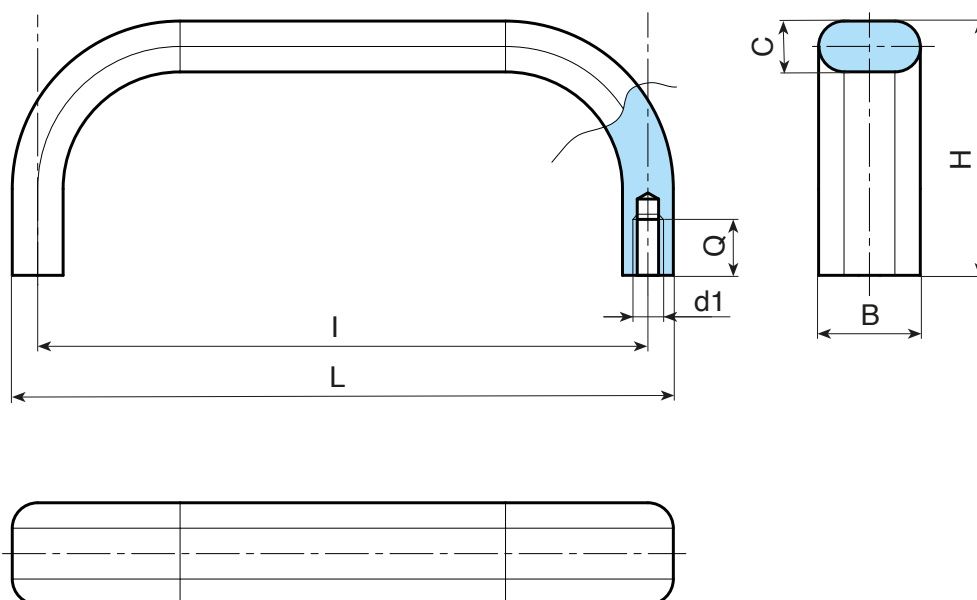
Colours:

cod. 01: Black anodised.

cod. 99: Natural silver anodised.

SPECIAL REQUEST:

- None.



B405 - Version anodised black - cod. 01

Art.	I	L	H	B	C	d1	Q	g	F1 (N)	F2 (N)
B405120.A20M0501	120	130	45	20	10	M05	10	85	500	500
B405180.A20M0501	180	190	45	20	10	M05	10	100	500	500
B405200.A20M0501	200	210	45	20	10	M05	10	120	500	500
B405350.A20M0601	350	360	45	20	10	M06	12	190	500	500

B405 - Version anodised natural silver - cod. 99

Art.	I	L	H	B	C	d1	Q	g	F1 (N)	F2 (N)
B405120.A20M0599	120	130	45	20	10	M05	10	85	500	500
B405180.A20M0599	180	190	45	20	10	M05	10	100	500	500
B405200.A20M0599	200	210	45	20	10	M05	10	120	500	500
B405350.A20M0699	350	360	45	20	10	M06	12	190	500	500

Presumable presence in the stock in %
 90% ● 40% ● 5% ●

B408



ALUMINUM SOLID FLAT OVAL BRIDGE HANDLE

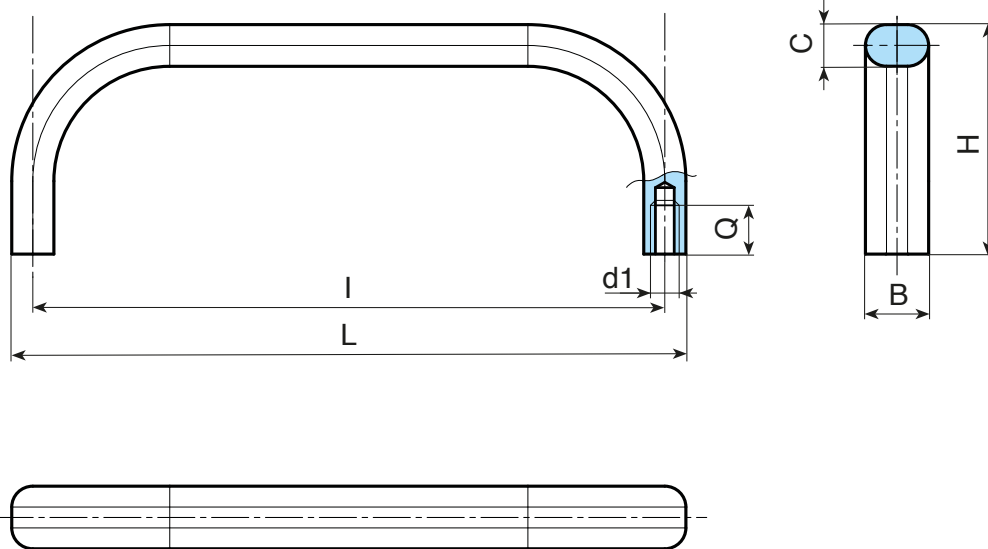
Material:
Bridge handle on aluminum alloy 6060.

Surface:
Satin.

Colours:
cod. 01: Black anodised.
cod. 99: Natural silver anodised.

SPECIAL REQUEST:

- None.



B408 - Version anodised black - cod. 01

Art.	I	L	H	B	C	d1	Q	g	F1 (N)	F2 (N)
B408055.A12M0501	55	63	40	12	8	M05	10	24	500	500
B408088.A12M0501	88	96	40	12	8	M05	10	30	500	500
B408100.A12M0501	100	108	40	12	8	M05	10	32	500	500
B408120.A12M0501	120	128	40	12	8	M05	10	37	500	500
B408180.A12M0501	180	188	40	12	8	M05	10	50	500	500
B408200.A12M0501	200	208	40	12	8	M05	10	55	500	500
B408235.A12M0501	235	243	40	12	8	M05	10	64	500	500
B408250.A12M0501	250	258	40	12	8	M05	10	68	500	500

B408 - Version anodised natural silver - cod. 99

Art.	I	L	H	B	C	d1	Q	g	F1 (N)	F2 (N)
B408055.A12M0599	55	63	40	12	8	M05	10	24	500	500
B408088.A12M0599	88	96	40	12	8	M05	10	30	500	500
B408100.A12M0599	100	108	40	12	8	M05	10	32	500	500
B408120.A12M0599	120	128	40	12	8	M05	10	37	500	500
B408180.A12M0599	180	188	40	12	8	M05	10	50	500	500
B408200.A12M0599	200	208	40	12	8	M05	10	55	500	500
B408235.A12M0599	235	243	40	12	8	M05	10	64	500	500
B408250.A12M0599	250	258	40	12	8	M05	10	68	500	500

B410



ALUMINUM SOLID ROUND BRIDGE HANDLE

Material:

Bridge handle on aluminum alloy 6060.

Surface:

Satin.

Colours:

cod. 01: Black anodised.

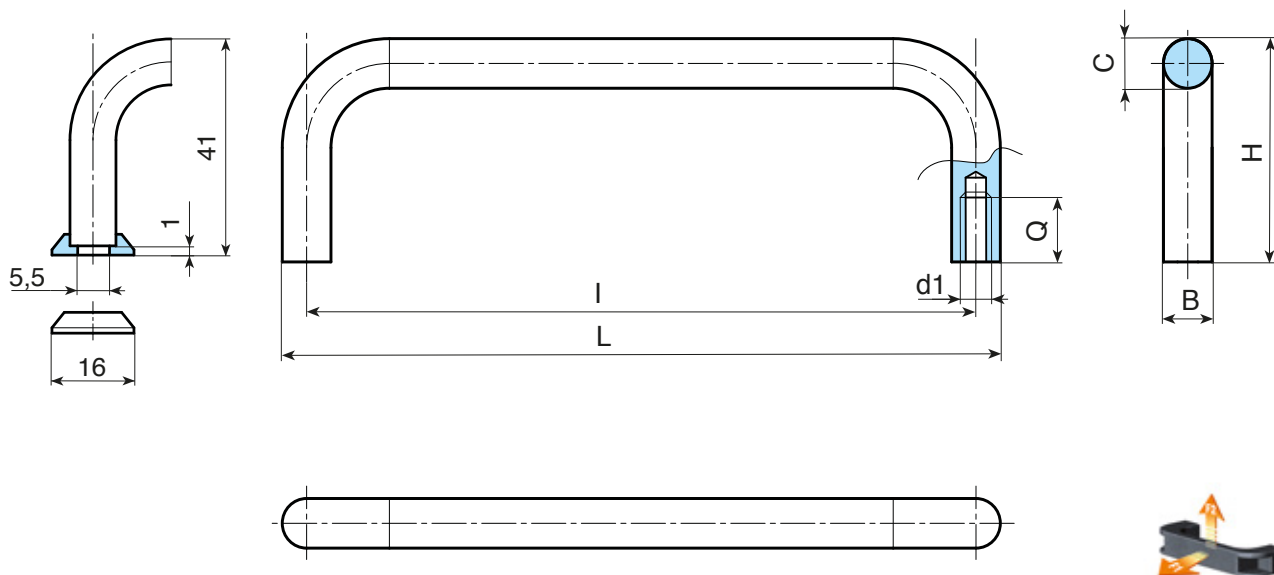
cod. 99: Natural silver anodised.

SPECIAL REQUEST:

- Cylindrical aluminum base on request. Supplied disassembled.

B411.A1601 Black anodised.

B411.A1699 Natural silver anodised.



B410 - Version anodised black - cod. 01

Art.	I	L	H	B/C	d1	Q	g	F1 (N)	F2 (N)
B410055.A10M0501	55	65	40	10	M05	9	22	500	500
B410088.A10M0501	88	98	40	10	M05	9	28	500	500
B410100.A10M0501	100	110	40	10	M05	9	31	500	500
B410120.A10M0501	120	130	40	10	M05	9	36	500	500
B410180.A10M0501	180	190	40	10	M05	9	48	500	500
B410200.A10M0501	200	210	40	10	M05	9	52	500	500
B410235.A10M0501	235	245	40	10	M05	9	62	500	500
B410250.A10M0501	250	260	40	10	M05	9	66	500	500

B410 - Version anodised natural silver - cod. 99

Art.	I	L	H	B/C	d1	Q	g	F1 (N)	F2 (N)
B410055.A10M0599	55	65	40	10	M05	9	22	500	500
B410088.A10M0599	88	98	40	10	M05	9	28	500	500
B410100.A10M0599	100	110	40	10	M05	9	31	500	500
B410120.A10M0599	120	130	40	10	M05	9	36	500	500
B410180.A10M0599	180	190	40	10	M05	9	48	500	500
B410200.A10M0599	200	210	40	10	M05	9	52	500	500
B410235.A10M0599	235	245	40	10	M05	9	62	500	500
B410250.A10M0599	250	260	40	10	M05	9	66	500	500

Presumable presence in the stock in %
 90% ● 40% ● 5% ●

B412



CHROMIUM -PLATED STEEL ROUND BRIDGE HANDLE

Material:
Bridge handle on automatic steel.

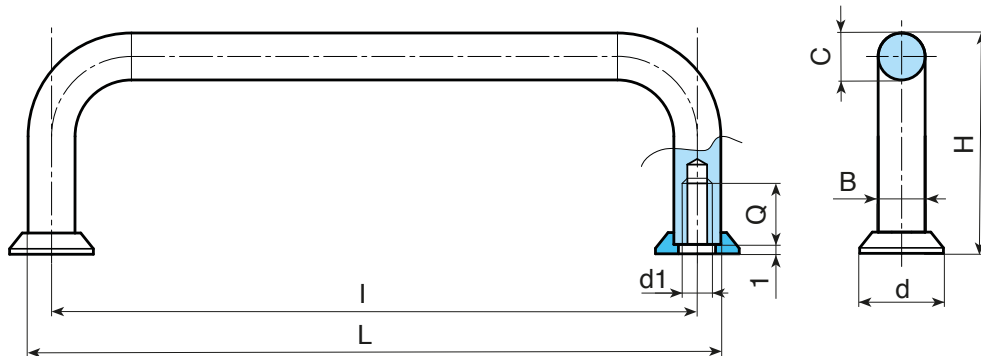
Surface:
Gloss Polish.

Colour:
Bright chrome plating.

SPECIAL REQUESTS:

- None.

Attention
The round turned steel base is supply disassembled.



Art.	I	L	H	B/C	d	d1	Q	g	F1 (N)	F2 (N)
B412032.R05M03	32	37	21	5	8	M03	6	8	1000	1000
B412042.R05M03	42	47	25	5	8	M03	6	10	1000	1000
B412055.R05M03	55	60	25	5	8	M03	6	13	1000	1000
B412076.R05M03	76	81	25	5	8	M03	6	15	1000	1000
B412088.R05M03	88	93	25	5	8	M03	6	18	1000	1000
B412032.R08M04	32	40	33	8	12,5	M04	8	28	1000	1000
B412055.R08M04	55	63	33	8	12,5	M04	8	38	1000	1000
B412064.R08M04	64	72	33	8	12,5	M04	8	41	1000	1000
B412088.R08M04	88	96	33	8	12,5	M04	8	50	1000	1000
B412096.R08M04	96	104	33	8	12,5	M04	8	56	1000	1000
B412098.R08M04	98	106	33	8	12,5	M04	8	57	1000	1000
B412102.R08M04	102	110	33	8	12,5	M04	8	58	1000	1000
B412120.R08M04	120	128	33	8	12,5	M04	8	65	1000	1000
B412128.R08M04	128	136	33	8	12,5	M04	8	68	1000	1000
B412136.R08M04	136	144	33	8	12,5	M04	8	71	1000	1000
B412055.R10M05	55	65	41	10	15	M05	10	67	1000	1000
B412088.R10M05	88	98	41	10	15	M05	10	87	1000	1000
B412100.R10M05	100	110	41	10	15	M05	10	94	1000	1000
B412102.R10M05	102	112	41	10	15	M05	10	95	1000	1000
B412115.R10M05	115	125	41	10	15	M05	10	103	1000	1000
B412120.R10M05	120	130	41	10	15	M05	10	105	1000	1000
B412136.R10M05	136	146	41	10	15	M05	10	112	1000	1000
B412180.R10M05	180	190	41	10	15	M05	10	142	1000	1000
B412200.R10M05	200	210	41	10	15	M05	10	154	1000	1000
B412235.R10M05	235	245	41	10	15	M05	10	175	1000	1000
B412250.R10M05	250	260	41	10	15	M05	10	184	1000	1000

AUTHORISED RESELLER

BOTECO Srl

www.boteco.it

36010 ZANE' (VI) - ITALY

Via L. Pettinà 16 (side street of Via Cuso)

Switchboard Tel.:+39-0445-316411 - Fax:+39-0445-316400

Sales Fax:+39-0445-316401 mail: commerciale@boteco.it

Administration Fax:+39-0445-316402 mail: amministratore@boteco.it

Technical Fax:+39-0445-316404 mail: tecnico@boteco.it

Certified Mail Box: boteco@pec.botecopec.it

